

# GRAFFHAM PARISH NEWS

ISSUE 401

FREE

JULY 2024



## Our fabulous, fun festival

Nearly 20 pages of pictures  
and reports inside this edition



**Graffham Parish News** is published and distributed free each month to every household in Graffham and East Lavington by the Parish of Graffham with Woolavington.



**Please support us** If you enjoy reading this magazine, then please make a contribution towards its costs through a monthly or one-off online donation – just point your phone camera at this QR code or go to [bit.ly/GPN-donation](https://bit.ly/GPN-donation)



**Archives** Back copies can be viewed online at [bit.ly/stgarchive1](https://bit.ly/stgarchive1)

**Subscriptions** If you live outside the parish, you can receive copies by mail by taking out an annual subscription for £36. Contact the editors for full details.

**Advertising** We love our advertisers! If you are interested in being one of them, please contact Philippa Sanders (below) or email [ads.graffhamparishnews@gmail.com](mailto:ads.graffhamparishnews@gmail.com)

**Copyright** All content is © *Graffham Parish News* unless otherwise stated and may not be reproduced without the editor's written consent.

**On the cover:** Members of the team behind Graffham Festival 2024 gather in front of St Giles Church as the 10-day extravaganza of concerts, floral celebrations, open studios, talks, films and overall fun and games got underway on Friday 14 June. For pictures and reports, see pages 29-42.

**Contributions and contacts** We're always pleased to hear from you at [editor.graffhamparishnews@gmail.com](mailto:editor.graffhamparishnews@gmail.com)

- Michael Blunt (left) 07711 997487
- Bill Barrett (right) 07443 501091
- Philippa Sanders 07853 921825



**Deadline for August edition**  
14 July.

**Printed by** Parish Magazine Printing, Holsworthy, Devon EX22 6TD.



# Writing from the Rectory: Community spirit

The deadline for submissions for this edition of *Graffham Parish News* fell just as the Graffham Festival was beginning, so as I write it is all still to look forward to. Final preparations are underway, with flowers going into the church and tickets still open for sale for all the events in church and churchyard, Empire Hall, studios, gardens and pubs. As you read this letter, however, the festival will have just finished.

The anticipation we felt will have been fulfilled, we trust, beyond expectation. The people of Graffham will have thrown themselves into providing and supporting all the events, for the delight of this community and visitors from beyond our parish boundary alike.

Mindful that the period of the festival also incorporated two weddings and a memorial service in church, by the time we offered our festival Thanksgiving Service, I'm wondering if I shall still be on my feet! What a good way to exhaust oneself, though.

I trust all of us are left now with a sense of wonder that such a little village could produce such talent and the organisation to present it so efficiently and effectively. Enormous thanks are extended to everyone who has played a part in it, large or small. The fact that such an enterprise is even

▶ *Continued on next page*



**Flower girls:** The team behind the *Glory of the Garden* floral display that brightened St Giles Church throughout June's Graffham Festival, led by Georgie Macqueen (centre front). Also in the picture are (clockwise from front left) Dianne Hardcastle, Sally Blunt, Barbara Edge, Bridget Lewis, Georgie's sister Cree Northcote-Clark, Nettie Lanaghan, Betty Bradley and Jill Knight. Also part of the team was Diane Bellis.

For more festival photos and reports, see pages 29-42.

► *Continued from previous page*

contemplated, then successfully carried out, for the enjoyment and celebration of people's creativeness in so many ways is a fine example of what can happen when people work together for the benefit of others.

Fostering a sense of community is one of the most natural and important human activities. At its simplest level, we find it in family life – people who mean the most to each other making time to enjoy and support each other. We find it in shared community projects and outreach activities. We find it in school life, in working life, in social contexts, and in church, as the body of Christ active in the world.

We only find it because people offer themselves to make it happen, work hard to bring it about, and contribute to the costs involved.

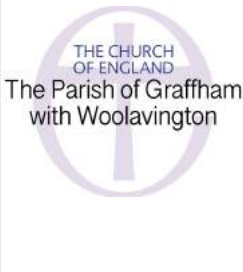
We should find it in national life too. As I write, the general election result too is still to be anticipated rather than known. As we stand on the brink of the formation of a new government in this country, we pray that those to whom leadership is extended by our monarch will set an example of service that brings people together with a good common purpose and ethos. May our new ministers and members of parliament build a national community, and contribute to an international community, in which all play a part that is cooperative, valued and worthwhile.

If they need an example to follow, they need look no further than our own Graffham Festival!

*Every blessing,*



**Reverend Vivien**



**Priest in charge:** Reverend Vivien Turner  
hello@stgilesgraffham.org 01798 867199

**Churchwardens:** Ginny Barrett 01798 867113  
Cindy Bradley 07787 516522

**Safeguarding Officer:** Howard Pescott  
01798 867029 safeguardinggraffham@gmail.com



stgilesgraffham.org



@stgilesgraffham

# June was GHSA's busiest month yet

June was the busiest month in living memory for Graffham Health Support Association (GHSA), with transport needed from its 50-strong team of volunteer drivers to make almost 35 trips to take members to medical appointments – around seven times the usual monthly demand.

June's record number included 15 trips to Chichester's St Richard's Hospital, ten each to Midhurst and Petworth Surgeries and one each to Bognor Regis Hospital, Pulborough Medical Centre and Southlands Hospital in Shoreham.

Ann Rowney, who has coordinated journeys for the GHSA for 15 years, said: "This is the most demanding period I have yet had to deal with, topping even this February and March, which were our previous highs. The response from our volunteer drivers has been absolutely amazing. Many thanks to them all.

This does not reflect a health crisis within the village nor an upsurge in membership – there are just 18 more on its books than a year ago. Rather, Ann stated: "Surgeries and hospitals are making a concerted effort to clear the backlog of the past few years and for St Richard's to catch up on appointments postponed when it suffered a norovirus outbreak recently. Also, hospitals are now running clinics of a different nature, for pulmonary conditions and weight loss, for example.



In addition, the surgeries now have paramedics and pharmacists working alongside the GPs, and they can prescribe medication and perform physio and other treatments. All of these are altering the way patients are treated."

Besides offering its members transport when needed to any kind of medical appointment, for a membership subscription of just £5 a year for adults (free for under 21s), the GHSA also:

- Collects prescriptions from Petworth surgery, which are then dropped off at Graffham Village Shop for members to pick up from there.
- Loans a wide-range of medical equipment – crutches, walking sticks, wheelchairs, walking frames, bathing aids and so on.
- Subsidises foot health clinic and exercise classes at the Empire Hall.
- Helps, for those in need, with paying for spectacles or dental care.

Tracing its history back more than a century, the GHSA currently counts more than 200 villagers as members, around half the village's adult population. Members who volunteer as drivers are reimbursed to cover some of their costs.

# Help give Graffham a playground to be proud of

*An update on plans for a major upgrade to the playground at Graffham Recreation ground was a main feature of the annual meeting of the parish of Graffham, at the Empire Hall on 22 May. Here, Rachel Gerrett, who is leading the project team, summarises progress to date and next key steps.*

Another update on plans for upgrading the village's playground? If you think there's been no progress, that's understandable, as the playground itself is looking much the same as before. But, behind the scenes, there has been a huge amount of work – and, with your help, a new play space could become a reality this year.

Last year, a working group was formed to represent village families. It includes Serena Cooper, Katie Donald, Sonya Gillespie, Bianca Pitt, Russell Smithers and Giovanni Soffietto, with Rec Committee Chairman John Bracey as sponsor.

Key concepts that have been agreed are that the new space needs to cater for children of all ages, be a place that everyone is able to enjoy, should be sustainably sourced, use a local provider if possible, be aesthetically pleasing, utilise natural materials and be an inspiring space for children to be in.

The preferred provider has been selected and is also happily very local. Elsted-based Playsafe will be able to maintain the equipment, too. They have been established for over 30 years and have undertaken various local projects, including providing most of the equipment installed at Easebourne. Playsafe uses FSCC robina hardwood, from sustainably managed woodland in the UK, and has a fully permanent employed team.

**The blocker to making this all happen is funding** Sixty four applications for grants and charitable support have now been made since 2022. Since the covid pandemic, discretionary funding has been cut and is extremely difficult to obtain. Funding that remains is frequently, and understandably, targeted for distribution in less affluent areas where access to private funding is a near impossibility.

The project was assigned £20,000 from the Community Infrastructure Levy (CIL) via the Graffham Parish Council last year. CIL is a commercial developer tax and one of its key intended purposes is for the provision of playspaces.

So at this stage – and having exhausted all other options – we are asking the community for its support. We need £50,000 for a broadly similar scale replacement of wany edged, wooden equipment, far more in keeping with its surroundings, up to new standards and under warranty. So, given the CIL funding

already secured, there is £30,000 to find. A total of £50,000 may sound huge but, to put this in context, Fittleworth playpark cost £100,000 and Easebourne's £250,000 and both were built around five years ago.

We are looking to make our budget go further by managing the related expenditure down – fencing, woodchip, logs for seating, benches, groundworks, waste removal etc.

Let's all help to do something about it and make it a place that Graffham can be really proud of.

It's easy to contribute – just go to our crowdfunding page by scanning this QR code (below)



with the camera on your smartphone, or type [gofund.me/546c06a7](https://gofund.me/546c06a7) in your web browser. As a charity, we are eligible for Gift Aid, which adds 25 per cent to everything you donate – so please add this if you are a UK taxpayer as this will be a big help in getting us to target sooner.

If you'd like to sponsor a particular piece of equipment either personally or via your business we'd be delighted to make that happen. If you can help practically, again, we'd really welcome that and it will mean more of the budget can be used on equipment.

All donations of £100 or more will be individually credited at the playpark so that when you visit the new play area, you can say: "I helped do this!"

- For any queries contact me at [rachel.gerrett@graffham.pc.uk](mailto:rachel.gerrett@graffham.pc.uk)



How Graffham's new playground could look, with your support – pictured are other sites nearby that have been created by the project team's preferred provider, Elsted-based Playsafe.



# Should Wallace Square residents use West Gate?

Graffham Parish Council has been asked for its views on the possible opening of Seaford College's West Gate, opposite St Giles Church, to all private residents living at Wallace Square, enabling them to access Graffham village's facilities more easily, safely and quickly.

Speaking on behalf of their fellow Wallace Square residents, Chris Leaver and Chris McGolpin said that when the 18 new houses there were developed, planning approval was on the basis that their residents would be able to use both Lavington Park west and east gates, and that this was agreed in writing between the Chichester District Council's Principal Planning Officer and all the three parish councils concerned – Graffham, East Lavington and Duncton – in 2009.

However, when the houses were sold a decade ago, a covenant implemented by Seaford College prevented them from using the Graffham gate.

Now Seaford College has asked, on behalf of the Wallace Square residents, for Graffham Parish Council's views on the potential removal of that constraint – which would trim around 10 minutes off their round-trip drive to Graffham Village Shop, the local pubs, the sports clubs here and so on.

Graffham Parish Council Chairman Roger Coakes said: "The council has to consider what is in the best interests of Graffham in its response. There has been a degree of confusion around the details of the original planning process and the implementation of the covenant but Seaford College has been quite clear to our parish council that the only right of access has always been via Duncton.

"This is the third time the question of access has arisen and on both previous occasions it was the increase in traffic through the village that was the prime consideration."

Chris Leaver and Chris McGolpin said opening the West Gate to Wallace Square residents was estimated to result in a marginal 5 per cent increase in traffic through the Graffham gateway, equivalent to an average three round-trip journeys a day, delivering valuable trade for the village shop, pubs and facilities.

They stressed that the recent installation of electronic number plate recognition at the Graffham gate would ensure only residents' cars would have access there. All deliveries and visitors would still need to use the gate at Duncton.

The issue is expected to be on the agenda for the next meeting of Graffham Parish Council, in the Empire Hall, on Wednesday 3 July.



# Showdown with highways chief on road repairs

A meeting has been arranged between the Chairmen of the three local parish councils between the A285 and A286 trunk roads – Graffham, East Lavington and Heyshott – and West Sussex County Council’s top highways official, Cabinet Member Joy Dennis, over the condition of the lanes running through the area.

Speaking at Graffham Parish Council’s Annual Meeting of the Parish on Wednesday, 22 May, its Chairman Roger Coakes described “the dreadful state of our local roads” as “probably the biggest frustration for everyone in Graffham”.

The number of potholes, crumbling verges and blocked drains rose heavily when these lanes were used as rat runs when the A286 through Midhurst was closed last year following the massive fire in the town centre and have been worsened by the excessive rain in the past year.

The meeting between the three council chairmen and the highways head, supported by local MP Andrew Griffith, is aimed at “pushing the case for resurfacing the badly affected stretches of our roads as a matter of priority”. It was scheduled for early June but had to be postponed for health reasons. A new date is awaited.

## FAMILY FRIDAYS are back at Graffham Rec

*Dear Graffham and friends,*

**Come and join us 4–8pm every other Friday in July (5 & 19 July) to connect, chat and relax in good company with some communal childcare.**

Bring a blanket, picnic dinner, stuff for the BBQ (coals will be hot from 5pm), good Dad jokes – and sunshine! The pavilion bar will be open for refreshments and it’s club night for Graffham Tennis Club, so don’t forget your rackets. We would love to hear from you, so do let us know if you are thinking of coming.

Any thoughts and ideas are most welcome.

**We hope to see you there!**

For further information etc, email  
[graффhamrecpavilion@gmail.com](mailto:graффhamrecpavilion@gmail.com)

# Footbridge behind Carpenters Town renewed



The footpath heading north from between Glebeland and Grove Cottage towards the rear of Carpenters Town has been reopened after West Sussex County Council fitted a new footbridge across the stream there in late May. The public right of way had been closed for several months when the old bridge was deemed unsafe.

# Case for merging civil parishes raised

The potential for the civil parishes of Graffham and East Lavington to merge was one of the topics raised from the floor at Graffham Parish Council’s Annual Meeting of the Parish held at the Empire Hall on Wednesday 22 May. It was prompted by an update on progress of creating a new standalone website for Graffham Parish Council, to replace the one it currently shares with neighbouring East Lavington Parish Council. A member of the public attending the meeting said: “We have two parish councils serving one neighbourhood – and the biggest costs for both is duplicated administration, including each having its own clerk.” Chairman Roger Coakes said his Graffham Parish Council did not have a formal position on the issue.

# Six vying for your vote in general election

Six candidates are vying for the votes of Graffham and East Lavington residents – and neighbours across our Arundel and South Downs constituency – in the general election on Thursday 4 July. Our local polling station will, as usual, be the Empire Hall, which will be open from 7am to 10pm. Don’t forget to take a suitable form of photo ID with you. The names on the ballot paper are:

- Richard Allen, Liberal Democrats.
- Andrew Griffith, Conservative.
- Steve McAuliffe, Green.
- Christopher Philipsborn, Labour.
- Mike Smith, Social Democratic.
- David Thomas, Reform.



Glebelands as it looks today (left), and an architect's drawing of its replacement.

## Replacement of Glebelands approved

Plans to demolish the current single-storey, two-bedroom dwelling at Glebelands, on the northern end of The Street, Graffham, and replace it with a two-storey, three-bedroomed eco-friendly home have been approved by Chichester District Council and South Downs National Park planners.

In her application for permission, owner Pauline Goodwin said: “My family has lived in Graffham for hundreds of years. The timber cottage of Glebeland has been of essential importance in our lives but sadly is now beginning to show its age. We are very keen to build a replacement home that we and the village can treasure – and so that we can make Graffham our permanent home for the rest of our lives.”

In authorising the proposal, planners described the proposed replacement building as modest in scale and in keeping with the national park's planning policies.

**Planning applications for Graffham and East Lavington filed with the South Downs National Park as we went to press (for details, see [bit.ly/sdnp-planning](https://bit.ly/sdnp-planning)):**

**The Priory, Selham Road, Selham GU28 0PW:** Extension and alterations to dwelling, including demolition of existing rear glazed conservatory, construction of new extension and fenestration changes. Alterations to existing pool house, including single storey extension and replacement roof and new air source heat pump. SDNP/24/01937/HOUS and SDNP/24/01938/HOUS. Received 9 May.

**We love our advertisers – and so do our readers!  
To advertise in *Graffham Parish News*, contact  
[ads.graffhamparishnews@gmail.com](mailto:ads.graffhamparishnews@gmail.com)**

# Sewage dumped in Rother here for 3,000 hours

Southern Water dumped sewage in the River Rother at Graffham's Barnetts Bridge 154 times in 2023, according to data posted by an environmental website. The discharges lasted a total of 2,998 hours – equivalent to a third of the year non-stop.

The utility also let effluent into the Rother upstream from Graffham on 93 occasions at South Ambersham, 111 at South Harting and 60 at Rogate and downstream 109 times at Fittleworth and 29 at Petworth last year. It also discharged sewage in the River Lod, which flows into the Rother between Selham and Halfway Bridge 49 times at Fernhurst and 21 times at Lurgashall. River Rother West was polluted 53 times at Fernhurst. These other local discharges lasted a combined total of 525 hours – equivalent to 22 days non-stop.

The data was compiled by the [topofthepoops.org](https://www.topofthepoops.org) website from figures reported by water authorities throughout Britain themselves for their discharges into the nation's rivers, lakes and beaches.

Our Arundel and South Downs constituency was the 43<sup>rd</sup> worst of the 595 ranked in mainland Britain for sewage overflowing into rivers – while neighbouring Chichester ranked 33<sup>rd</sup> worst.

A Southern Water spokesperson told *Graffham Parish News*: “2023 fell in an 18-month period which was the wettest since records began. During this time, many parts of our region recorded well over twice the average rainfall. It was this excess rainfall, combined with high groundwater levels, that led to an increase in storm overflows. This is the system that releases excess flows into the environment to avoid communities from flooding.

“Reducing storm overflows is our number one priority. We agree with our customers that their use is unacceptable which is why we launched our £1.5 billion Clean Rivers and Seas Plan. We're currently exploring nature-based and engineering solutions to find the best way to reduce spills.”

## Ultrafast broadband reaches the Pavilion

High speed wifi is now available at Graffham's Recreation Ground Pavilion after the building was connected to the ultrafast broadband that has been rolled out across the village. Chairman of the Recreation Ground Committee John Bracey said it would benefit the Pavilion's many users, who could now access the internet and their emails in an area with a weak mobile phone signal. It would also enable the bar there and clubs and societies using the building to take card payments.

# Village shop association sets date for AGM

Graffham Village Shop Association (GVSA) holds its annual general meeting on Tuesday 2 July at 7pm in the Empire Hall. The agenda and other papers for the meeting have been circulated to shareholder members. Ros Britton and Andy Jones are being nominated to succeed Neil McLean and Andy Pattison as Secretary and Treasurer respectively.

The GVSA owns the premises operated by Jeeva and Vasu, the unit alongside currently used by picture framer Stephanie Marx and the Chapel View residential house. All three are leased out and the association has little involvement in the day to day running of the businesses.

As their landlord, however, the GVSA's committee is responsible for the overall maintenance of the properties, for collecting rents owed by the lessees, enabling it to repay the bank loan which financed the redevelopment of buildings in 2015. It also considers improvements which will benefit the community as a whole and for safeguarding these vital village assets for the long-term future.

Villagers are encouraged to participate in the GVSA by becoming shareholder members. For more details, please contact [admin@gvsa.uk](mailto:admin@gvsa.uk).



## CHARITY BRIDGE TEA

*in aid of St Giles Church, Graffham*

**Thursday, 17 October 2024, 2-5pm**      The Empire Hall, Graffham

Donation of £60 per table

*For more information and to reserve a table, please contact  
Nettie Lanaghan on 07798 624466 or at [thornhills@aol.com](mailto:thornhills@aol.com)*

# Crimestoppers

Sussex Police's log of incidents locally in recent weeks. If you have any information which might help, please report it.

**Cocking, Middlefield Lane:** Various items, including bags and house keys, stolen from four vehicles – one of which had its rear windscreen smashed, while parked in a public car park on 16 June.

**Singleton, Trundle Hill:** The rear window of a vehicle was smashed but nothing stolen from inside, on the evening of 12 June.

**Easebourne, Cowdray Road:** A van was broken into and first aid equipment, including lifesaving dummies and defibrillators worth £4,000, stolen on 24 May.

**Petworth, Balls Cross Road:** A male was witnessed stealing the registration number plates off a van on 23 May at around 9.10pm.

**Support St Giles while you do your shopping** You can raise funds for St Giles Church whenever you shop online – at zero cost to you. To find out how simple it is, just go to [stgilesgraffham.org/shopping-online](http://stgilesgraffham.org/shopping-online)

## BEAR PETWORTH

20th Century Design, Antiques, Home Accessories and Gifts



Stockist of Santa Maria Novella, Leach Pottery, David Mellor, Ichendorf, Kalinko and Villa Bologna.

Open Monday - Saturday, 10am - 5pm  
10A New Street, Petworth, GU28 0AS

[www.bearpetworth.com](http://www.bearpetworth.com)  
Tel: 01798 651066



## Graffham singers are 'heading to Hollywood'

A goodly number of Graffham singers will be performing in Petworth Chorus's mid-year concert *Filmharmonic*, at the town's Herbert Shiner School on Saturday 6 July evening. The event will feature "some of the best film music you know... and some you might not", from George and Ira Gershwin to Mozart and Adele to Mancini and more, promising "something for absolutely everyone to say 'that was my favourite'."

Doors open at 5.30pm to allow time for parking, erecting gazebos and setting up picnics. The singing starts at 6.45pm with an interval for your picnic from about 7.30pm. The second half should end by around 9.30pm. For more details and tickets, see [petworthchorus.co.uk/filmharmonic](http://petworthchorus.co.uk/filmharmonic)



**Taking a bow**, the team that brings you *Graffham Parish News* every month – the editorial team, regular contributors and the score-strong squad that slips 12 copies a year through letterboxes of each of the 350 or so properties throughout the village, come rain or shine! They gathered for a thank-you party hosted by the magazine's publishers, Graffham with Woolavington Parochial Church Council, on a June evening when the skies darkened and wind blew, forcing a change of location from the editor's garden to the Empire Hall.



NESTLED IN THE HEART OF THE SOUTH DOWNS

T: +44 (0)1798 867331  
E: INFO@WHITEHORSEGRAFFHAM.COM  
W: WWW.WHITEHORSEGRAFFHAM.COM  
@WHITEHORSEGRAFFHAM



# Property watch

Homes for sale or rent locally, posted at [rightmove.com](https://www.rightmove.com) since our previous edition:



**The Retreat, The Street, Graffham GU28 0NS:** Four-bedroomed end of terrace house, three bathrooms plus cloakroom, kitchen/breakfast room, dining hall, sitting room, snug, utility. Garden, outbuilding, off-street parking. Total floor area of 150 sq m (1,610sq ft). Guide price £850,000. *Jackson-Stops, Midhurst 01730 774837. Listed 14 Jun.*

**4 Biddulph Mews, Burton Park, Duncton GU28 0PD:** Mews cottage converted from stables, two bedrooms, two bathrooms, sitting/dining room, kitchen/breakfast room. Garage. Private garden and access to parkland, tennis courts and lake. Internal floor area of 107 sq m (1,153 sq ft). Guide price £435,000. *Barrington & Co, Petworth 01798 309657. Listed 20 May.*



**Moorlands, Cowdray Park GU29 0BA:** 38-acre estate including four-bedroomed farmhouse with two bathrooms, kitchen/diner, sitting, family and dining rooms, study and cellar, plus outbuildings offering barn, garage, gym, boiler room, annexe with two bedrooms and bathrooms and kitchen/sitting room, plus store and summer house. Total floor area of 630 sq m (6,780 sq ft). Guide price £7.5 million. *Savills, London 020 3835 5740. Listed 5 Jun.*



## THURSDAY CLUB

Visit to Nonnington Farm

Thursday 11 July 2.30pm

Meet at the farm, opposite the White Horse

All welcome

# Harriet and Valentin make their vows

Harriet Aylwin married Valentin Vincendon at St Giles on the afternoon of Saturday 15 June.

It was the opening day of the Glory of the Garden floral celebration in the church, so it was filled with flowers for them.

Harriet's Mum Jan lives in Millburgh Hall. Valentin is originally from France, but the couple now live in London.



**"This is a school that really does empower"**

*Tatler Schools Guide 2022*

**VISIT US!**

Please call 01798 831456 or email:  
[sobrien@dorsethouseschool.com](mailto:sobrien@dorsethouseschool.com)

to find out more or to make an appointment.

*Independent prep school for children from 4 - 13*

*Morning minibuses and after school clubs*

**DORSET HOUSE SCHOOL**

Bury • Pulborough

[www.dorsethouseschool.com](http://www.dorsethouseschool.com)



# Johan and Lucy exchange rings on the Rec

A ceremony and celebration in a marquee on Graffham Rec marked the marriage of Johan Skanberg-Tippen and Lucy Chadburn on Saturday 8 June.

Johan, a chartered engineer specialising in civil and coastal engineering, lived here in the village from the age of seven until he left for university. His Mum Karin's house is opposite the Rec. He and Lucy love Graffham and the Downs, so the venue was the obvious choice for their nuptials, though they both now live across the county in Hove.

Lucy wore a blue and white wrap dress with white flowers in her hair. She carried a bouquet made from flowers from Graffham gardens, centred on stunning roses plundered (with permission!) from the garden of Karin's next door neighbour Caroline Cowcher.

She walked to the ceremony on her father John's arm, accompanied by six nephews and nieces.

Lucy is a project manager with cycling and walking charity Sustrans so it was appropriate that their honeymoon, ahead of the wedding ceremony, took the form of a seven-week cycling and camping trip from Greece to Prague, zigzagging through 12 countries.



# Betty Ringe: 23 December 1923-18 June 2024



Betty's drawing of St Giles on *Graffham Parish News'* very first edition, in November 1990. Her funeral will be in the church on Friday 5 July, at 1.30pm.

Betty Ringe, who drew the pen and ink drawing of St Giles Church that featured on the front cover of the very first edition of *Graffham Parish News* in November 1990, died on Tuesday 18 June – just six months after reaching her centenary.

Her artwork went on to adorn the front and inside pages of many issues of your favourite village monthly news magazine – and featured on the walls of many homes in the neighbourhood. That debut of this magazine was published not many years after Betty had moved to East Lavington's Sandrock, in Norwood Lane, with husband Don who then had recently retired. He passed away 21 years ago. Betty was determined to stay on at their home for as long as she could. Supported by her family, friends and carers, she managed that for several months after she turned 100 in December. She was in Chichester's St

The advertisement features a background image of an outdoor garden with tables and chairs under a blue sky with a smiling sun icon. The text is arranged as follows: 'Enjoy our sun soaked garden this summer' in a bold, black, sans-serif font. Below that, 'Have a refreshing drink, dine alfresco and enjoy one of the many amazing events we have lined up for you - there really is something for everyone!' in a similar font. Underneath is 'EAT, DRINK, ENJOY, STAY AWHILE' in a white, outlined, blocky font. At the bottom center is a logo for 'THE THREE MOLES' featuring three stylized moles and the text 'Pulling Pinks Since 1872'. To the left and right of the logo are smaller inset images showing the garden at night and a close-up of a table.



Betty pictured soon after she moved to the village in the late 1980s (left) and in front of one of her paintings of an ancestor, just before her centenary last year.

Richard's Hospital for three weeks earlier this year before spending her final three months in Petworth's Rotherlea Care Home.

Betty was born in Guildford on 23 December 1923 – though the aunt who registered her arrival as Elizabeth Rosemary Page got the date wrong, so her birth certificate recorded it incorrectly as 23 November. They never felt the need to correct it officially. When she was just a baby, her father died after being thrown from a horse. Her mother became a Mrs Robertson when she remarried a few years later to an optician. Although he lived in Winchester, he hailed from Glasgow – and instilled in Betty a love of Robbie Burns and poetry.

She went to Winchester Grammar School until she was 16. She worked briefly for an electricity company then, with World War II in full flow, she trained as a nurse with the Red Cross. It was then that she met the man who would become her husband, engineer Don. They had to wait until after the war – and his return from Japan where he had been held as a prisoner of war – before they could marry.

They lived in Godalming, for 25 years, raising three daughters – Rosie, who sadly died of lung cancer, Josephine, who now lives in the West Country, and Julie, who is based in Duncton and visited her Mum every day. They gave her six grandchildren and half a dozen great grandchildren.

Betty spoke French and Italian and travelled extensively. Besides her art, she loved her garden, playing the piano, singing and reading. Interviewed by *Graffham Parish News* just ahead of her centenary, she could keep up a conversation, with a smile on her face, a twinkle in her eye and a lively sense of humour. She said then: "This is a wonderful place to live, an active community with lots of things to do. I have so many special memories of my time here."

# Graffham Garden Group's summer diary

Graffham Garden Group has a busy programme of visits and other events this summer. To book your place on any of the outings – which are open to everyone, not just members – contact Nicky West at nicolamwest@btinternet.com or on 07796 144647. Car sharing is encouraged so please always ask if you would like a lift!

**Saturday 13 July 2.30pm**

**Flower and produce show**

Empire Hall, Graffham

See opposite page for details.

**Wednesday 7 August 2pm**

**Visit to Fittleworth House**

Bedham Lane, Fittleworth RH20 1JH

Three acres of country garden. Walled kitchen garden growing wide range of fruit, vegetables and dahlias. Mixed flower borders, roses and lawns. Glasshouse and potting shed. Teas available.



£7. Pay on arrival. Our visit is on an NGS day.

**Friday 13 September 12 noon**

**Visit to Parham House**

Parham Park, Pulborough RH20 4HS



A four-acre walled garden with wide herbaceous borders, rose garden, vegetable garden and orchard, with a 1920s Wendy house and a greenhouse with pelargonium collection. Further gardens with lake and specimen trees. Tearoom. Should you wish to visit the house, note that it is not open until 2pm.

£11.50 to visit the gardens only (RHS and Historic Houses members free). Pay on arrival.

**Save the date for Graffham's Fete**

**Bank Holiday Monday 26 August**

*Let's fill the hall with flowers, fruit, photos, veg  
and wonderful cookery!*

# **GRAFFHAM GARDEN GROUP FLOWER AND PRODUCE SHOW**

**Saturday 13 July**

**Empire Hall**

**8-10am** Hall open for entries  
**2.30pm** Hall open for viewings and teas  
**4pm** Presentation of prizes

*Classes for flowers, fruit, vegetables,  
cookery and photographs*

***NEW for 2024:***

***Heaviest potato and heaviest onion!***

*Photo classes: 1 Graffham Village Life 2 A Splash of Colour  
3 Animal 4 Reflections 5 Any subject (under 16s)*

The schedule of classes should have dropped through  
your letterbox in June – with more available from the  
village shop or call Marie Bracey on 01798 867760

***Silverware and cash prizes up for grabs – but  
it's the taking part that counts!***

# Nature Notes: Something wriggly this way comes

A regular column by Sussex naturalist and wildlife guide Michael Blencowe, who can regularly be spotted in and around Graffham.

Many of us migrate in the summer towards the sea, exchanging our familiar habitats for a few weeks in someplace sunnier and sandier. As we leave our Sussex, a mysterious creature, born in the dark depths of a distant ocean, is heading here for a holiday of its own.

Let me take you 3,500 miles west to the wide Sargasso Sea, an area of the North Atlantic known to superstitious seamen (and Barry Manilow fans) as The Bermuda Triangle. Today, the once mythical Sargasso is more infamous as the ocean's waste dump where surface currents deposit our non-degradable floating flotsam.

But the Sargasso still holds one last mystery. Each year, millions of transparent slithers – like an army of tiny polythene leaves – rise from the deep there. It's almost as if the seaweed and the spirits of the sunken sailors have merged with the PVC and plastic. These are the *Leptocephali*, the 'thin heads', the larval stage of the European eel. These see-through seafarers go with the flow and drift across the North Atlantic on a three-year Gulf Stream cruise.

Upon reaching Britain's coastal waters, their appearance changes. They become

## Graffham Down Trust Annual Picnic

Sunday July 21 2024 from 10am to 1 pm

\*\*\*\*Meet outside St Giles Church at 9.45am

\*\*\*\*Picnic on the Downs for all ages at 12.30pm

\*\*\*\*Bring a picnic and join us in Bowley's Reserve at midday.



Featuring a butterfly walk led by the one and only Michael Blencowe.

Will he spot the Purple Emperor butterfly this year?

To reserve a ride to the top contact: [JimKirke@hotmail.com](mailto:JimKirke@hotmail.com)

For more information e-mail: [sennitt2@gmail.com](mailto:sennitt2@gmail.com)



wriggling transparent tubes with black eyes – ‘glass eels’. Riding up rivers like the Arun they head towards places like Arundel and swim upstream. In these brackish waters their bodies darken to a tidal tan.

They are now elvers. Many of the bridges and weirs block their way but the installation of bristly eel passes has assisted their journey. They finally make it to their Sussex holiday homes exchanging saltwater for freshwater as they pass into the tributaries like the Rother and further on into the myriad of streams and brooks that feed our river. Yellow-bellied and small-eyed, these are yellow eels and

will holiday here for around 15 to 30 years. But as with all holidays, the day comes when you have to return home. After decades in the depths of the eel’s mind, a primeval urge is awakened. The Sargasso is calling. Their bodies harden, their eyes widen, their stomachs shrivel, and yellow eels become silver eels. August sees the start of their epic journey home. Nothing gets in their way. Land, usually an inconvenient barrier for fish, does not stop them. On dark, wet nights the silver eels crawl out of water, slithering snake-like across fields and back into the river system.

Hereabouts, they’ll pass Midhurst, Petworth and Arundel and head out over the great Atlantic Shelf and into darkness. Here’s where the silver eels vanish. Exactly where they go and how they get there is unknown. Yet each year the Sargasso will mysteriously spawn a new cloud of transparent tourists hellbent on holidaying in Sussex by the Sea.

- You can find details of Michael’s upcoming events, wildlife sightings and adventures or book him for a wildlife survey of your garden or land at:



A European eel pictured in a local stream by © Derek Middleton for Sussex Wildlife Trust (above). When it is time to head ‘home’, they will cross fields to get back to a river (below).

A logo for Michael Blencowe featuring a cartoon illustration of a man with a beard and a hat, surrounded by various symbols like a camera, a magnifying glass, and a red chili pepper. The text 'FREEDOM OF INFORMATION ACT' is visible in the background.

[michaelblencowe.com](http://michaelblencowe.com)

Even more free entertainment  
for you to enjoy this summer at  
**The Three Moles**



No tickets or bookings required. Turn up and enjoy!

## The Straw Dogs

Irish Folk Band

Saturday 13th July - 8pm



## ABBA Voulez Vous

Tribute Duo

Saturday 27th July - 8pm



## The Captains Beard

Sea Shanties Pirate Style

Saturday 10th August - 8pm



## Tesoro

Tenor & Soprano Duo

Saturday 14th September - 7.30pm



[www.thethreemoles.co.uk](http://www.thethreemoles.co.uk) 01798 861303

# Out and about: Earthstars

A new occasional column by Jonathan Simons, village amateur botanist and fount of knowledge on so many things astonishing and bizarre.

Jenny and I moved to Graffham's Millburgh Hall in October 2004. On my first foray out onto the common, just across the road, I was very impressed by the calming serenity of the location and much excited by the variety of fungi beneath the pine and birch.

The next day, on my second outing, I was amazed to find Collared Earthstar, *Geastrum triplex*, in some quantity in deep leaf litter within sight of my new home. I had only seen it on a couple of occasions before and in remote locations but here it was on my doorstep. It seemed to sense that it had found someone who really appreciated it because in the following years I found it appearing in the grounds of Millburgh Hall itself.

It is now a regular feature, and we actually have a framed picture of it above our bed.

I have subsequently found it in several other quite different places in our area – at Botany Bay, near Graffham Court, by the South Downs Way on Graffham Down, in Duncton Hangar and in Midhurst's Carron Lane Cemetery. It is always a surprise!



This fungus develops as a golf ball-sized object just underground. As it matures, the outer skin splits, star-like, bends back and lifts the fungus clear of the ground allowing the elements to coax the spores out of the delicate inner spherical 'stomach'. The skin segments break during the process, creating the collar after which this particular species is named.

I once took an unexpanded example to a foray at Horsham, near where I lived for 30 years. I met up with a young woman I had known when she was a contemporary of my sons at Nuthurst primary school. She showed great interest and I gave her the fungus. Later she sent me a wonderful sequence of time-lapsed photos showing the development of this fascinating organism – featured here!

# From Town Hall: What my role involves

*Our representative on Chichester District Council, John Cross, provides his regular update on his key issues of focus right now.*



The general election is in full swing, and during this period of political purdah I am limited in what I can write about. So, I thought I would cover the role I took on last year when voted on to Chichester District Council (CDC).

When I was asked to be Vice-Chair of the council, I had little idea what that meant. In my ignorance, I thought that I would chair a meeting when the Chair of the Council was absent. While that is true, the role is so much more.

The Chair and Vice-Chair of the council are apolitical roles. Rather like the speaker of the House of Commons, we are non-political and duty bound to show no political bias. The Chair of the Council, Claire Apel, is a long-standing Chichester resident and has served as a district councillor for many decades. I have learnt much from her about how the process and procedures of local government work.

Unlike Claire, I don't get a chain of office, but I do get a badge. Officially, if any dignitary comes to the district, then either Claire or I may be called upon to greet them. These VIPs could be diplomats or ambassadors, representatives from various organisations or members of the Royal family. The role can also entail representing the district council for different ceremonies, remembrances, services and openings. These have been interesting, enjoyable, engaging and sometimes humbling, and it is always a privilege to represent the CDC.



**ClearSkies**  
**Travel Insurance**

- No upper age limit
- Medical condition specialists
- Waiting list cover
- Cruise cover option
- Single trip, multi trip, backpacker

**01428 772 722**  
[clearskiestravelinsurance.com/intro/graffham](https://clearskiestravelinsurance.com/intro/graffham)



**FORESTERS GETAWAY**  
*Cosy Country Cottages*

**B&B**  **Holiday rental**  
**Graffham village**  
**5\* Livery**  
**07768 697427**

# East Lavington update

*East Lavington held its annual meeting of the parish on 20 May. Here's an edited version of East Lavington Parish Council Chairman Charles Britton's annual report.*

At a time when some town and parish councils experience turnover with councillors and with clerks, East Lavington Parish Council still has the same team that was created in the local elections of 2019 and again in 2023. Actually, two of us go back a bit further than that. Our parish clerk Amy Harte has been with us for nine years, having joined us as a locum in April 2015!

**Planning** East Lavington is a small parish that lies wholly in the rural area of the South Downs National Park. The national park is our local planning authority, and it is the policies of its local plan that we must follow.

These policies are very tightly worded. This is not surprising, since the first purpose of national parks is to conserve and enhance the natural beauty, wildlife and cultural heritage of the area. As usual, planning has been a significant part of our council activities. Since last May we have been invited to comment on seven new applications. Five of them have now been determined, though one of them is now subject to an appeal. Two others are still in progress, and we still have five in progress from the previous two years!

The South Downs local plan was adopted in July 2019. Many of its planning policies are noticeably more prescriptive and restrictive than those of the old Chichester District Council local plan. Since then, we have noticed that some applicants and architects sometimes ignore or challenge the advice, comments and recommendations of planning officers. To our knowledge none of these challenges has yet been successful.

**Roads and rights of way** Public rights of way are important for us, since we have an extensive network of footpaths, bridleways and restricted byways in the parish. The county council is responsible for clearing surface vegetation on these routes, but the side and overhanging growth is the responsibility of the landowner. Some are good at clearing while some are less so and need reminding now and then.

The condition of the roads is a major problem for all the local parish councils. Heavy and persistent rain has caused havoc with the road surfaces, with some really deep and damaging potholes. Not surprisingly repairing the road surfaces has posed a real problem for the West Sussex Highways Department.



Simply  
Windows  
& Doors

We supply and install:

- » uPVC, aluminium and composite windows and doors
- » aluminium bi-fold doors
- » aluminium slide and swing doors



“

A fantastic product, expertly fitted and the whole project was finished with great care.

*Mrs W, Midhurst*



**GET IN TOUCH** » call 01730 601340 / 07454 660770  
info@simplydoorssouthern.co.uk / simplydoorssouthern.co.uk



## Our fantastic, fabulous, unforgettable festival

Graffham Festival 2024 came to a close as this edition of *Graffham Parish News* went to press – a programme of around 25 events across 10 days, in which villagers opened their gardens, showed off their artistic, vocal and dramatic talents, put on a truly magnificent floral display in St Giles, enjoyed concerts, a film and a talk by arguably Britain’s top sculptor, Philip Jackson, from nearby Cocking – something for all ages and tastes. Even before the opening night, almost 600 tickets had been sold after some 3,500 copies of the festival programme had been distributed in villages and towns surrounding the neighbourhood and posters put on display near and far.

It was the first Graffham festival since before the pandemic, and as it opened, Phil Jones, who led the team of organisers, said: “We’ve a great tradition for this kind of thing here in Graffham – and, after missing out in the past few years, we’ve been pulling out the stops to make 2024’s festival our biggest and best yet. Initial signs are that, thanks to lots of hard work by many people, we’re on track to meet that goal.”

We feature pictures and reports from most events in the festival calendar in this edition – with a review of the revue *Graffham’s Got Talent!* to follow next month.



The team spearheading Graffham Festival 2024 feature on our front cover. From left, back row: Phil Jones, Richard Davidson, Brian Lanaghan, Ginny Barrett, Michael Blunt, Stuart Lewis and Jim Kirke. Front: Rev Vivien, Karin Skanberg, Jude Sennitt and Sue Hill. Peter Hardcastle and Holly Sabin are missing from the photo.



**Flower duet:** The first two concerts in St Giles were by the Benedetti Foundation Ambassadors (left) and Future Talent (right) with Emily Barden and Petworth Voices.

St Giles was the setting for the opening four concerts of the festival. Launching festivities on the first Friday (14 June), in the church packed with flowers for the Glory of the Garden display (see overleaf), was a string quartet of Benedetti Foundation Ambassadors, followed the next evening by the stars of tomorrow



## MUSIC

from Future Talent, on the same bill as local choral group Petworth Voices and Emma Barden, who led a singing workshop earlier that day in the Empire Hall. On the first Sunday evening, it was cabaret night, with Shane Hill, Jodie Elms and Mike Hatchard, followed on the Monday evening with an organ recital by local maestro Malcolm Brinson. Then it was the turn of our local pubs – flamenco at the Foresters and folk at the Three Moles, finishing off with a steel band on the Rec.



**Drinks break:** Each of the St Giles concerts was preceded by drinks and snacks in the gorgeous garden of the Old Rectory, next door, generously hosted by Sandy and Georgie Macqueen.



**Festival flush:** No festival is complete without its portaloos. Checking them out after their delivery at Graffham Infant

School's car park on the eve of the festivities are Sandy Macqueen, Stuart Lewis and grandsons and Jim Kirke.





**Songbirds:** Locally based songstress Emily Barden led a singing workshop in the Empire Hall on Saturday 15 June – and then performed some of her songs and led one of her choral groups, Petworth Voices, in a double bill concert with Future Talent.



**Fiesta at the Foresters:** Landlord David Gordon-Smith (pale green shirt) got into the samba spirit with revellers, to the flamenco music of the fabulous Pamayu Duo in the pub's sun-dappled garden on Wednesday 19 June.

**Mole dancing:** Top band Noble Jacks Duo led the bill at a folk night at the Three Moles on Thursday 20 June – with 200 or so revellers dancing the evening away in the pub's garden.





A floral candelabra is hung in place.



## FLOWERS

St Giles Church can never have been filled with more flowers than for the festival's Glory of the Garden display, masterminded by Georgie Macqueen, who has served previously as designer for Chichester Cathedral's Festival of Flowers, supported by many of the church's regular flower arrangers.

It was open 8am-8pm daily throughout the festival's 10 days.





**Flower power:**  
Paintings of flowers  
by the children of  
Graffham Infant  
School formed an  
eye-catching  
roadside banner  
across the front of St  
Giles Church  
throughout the 10  
days of the festival,  
(foot of this and  
previous page).





**Gardeners' delights:** Four of the 15 gardens that opened their gates, with their gardeners, clockwise from top left: Peter and Dianne Hardcastle's Stoberry Cottage, Jim and Carole Kirke's Boswell's Cottage, Simon and Gaye Foord at Cackle Hill, and Philip Trower in front of his 1904 Romany caravan at Badgers Cottage.



**Lucie Hayworth opened not just the family garden at Appletrees – but also her dried flower workshop.**



## GARDENS

Hundreds of visitors tromped the length the village to visit the 15 gardens that opened their gates to the public on the final Saturday and Sunday of the festival (22 and 23 June), along with the Glory of the Garden floral display in St Giles and the Love Your Burial Ground's Count on Nature survey plus the art studio trail. They were treated to perfect weather on both days.

Visitors came from as far afield as London, Brighton and Selsey, with quite a few overseas guests also joining them.



**Green fingers:** Clockwise from top left are John and Barbara Edge's Ladywell Cottage, Mary and Martin Taylor's The Pines, Nicola Tyrrell at 4 Woodside Cottages and Sue Tink at 2 Stuart's Meadow. Below: Sally and Michael Blunt in Popple Hill Cottage's wild flower meadow.



**Look and learn:** At High View's 'work in progress' garden, visitors could listen to Wallace Square conservationist Matthew Sennitt demonstrate how to encourage wildlife and garden designer Angela Palmerton on how to create a pond to bring more nature to your garden – or, at other times, to its owner Rich Sabin play his harp.



Francois and Colin Barker and Dominique Kenway catch some rays of sun outside their studios in the Lavington Estate's newly renovated barns at Calloways (above). Dominique shows some of her paintings to visitor Peter Hardcastle (below right) while Colin stands in front of some of his photographs (below left).



## ART STUDIOS

Almost 20 Graffham artists and crafts people displayed their works in nine venues in and around Graffham during the final Friday, Saturday and Sunday of the festival.

Left: Richard Davidson in his own studio at Brookdene House.



Clockwise from above: Sue Hill (right) and visitors at her Graffham House studio, Jane Stickley displaying her jewellery in the space she shared with Jacky Gregory and Rosemary Roberts at Maple House, Clive McBain at Brook Hill Cottage, and Joanna Morris with some of her pottery at Topleigh Stables.





## Party time on the rec as sun sets on festival



### PARTY

Scores of villagers thronged together on the final glorious evening of Graffham Festival 2024, on Sunday 23 June, to celebrate, relax, eat, drink and be merry... and take a fresh breath – as only Graffham can.

As the late afternoon sun slipped towards the west, two hot air balloons floated into view over Graffham Down – perhaps lured by the Caribbean groove of the Worthing Steel Band, which did not take long to get the revellers up on their feet and boogieing on down.

The bar, manned by Beetle Clay and Richard Gyles, did almost as roaring a trade as the barbeque, cooked by a team led by Jim Kirke, serving Sussex lamb and locally sourced burgers, bangers and buns.

It was also a chance for the community to put their hands together and thank the team behind the festival, led by Phil Jones.



**Smoke gets in your eyes:** Phil Jones, who led the festival organising team, leads the applause for all who contributed, while smoke from the barbeque wafts over.





**Cooking a barbeque can be jolly thirsty work!** Miles Amin raises a toast, while daughter Olive and Jim Kirke (right) are ready with their tongs to turn the bangers and burgers.



**All I want to do is have some fun and natter:** The end of festival party was a time for friends and neighbours to share the barbeque and a few laughs, with a drink or two in the late afternoon sunshine to the sounds of the Worthing Steel Band, while reflecting on their highs and even higher of the ten-day jamboree.





**Letting off steam:** With two hot air balloons floating overhead as the shadows lengthened, villagers let their hair down to the sound of the Worthing Steel Band.





Every dog has his day: Puppies wait patiently for their owners to finish having fun.



## Talk and film fill up the Empire Hall

The first sell-out event of the festival was an illustrated talk at the Empire Hall by one of the world's pre-eminent sculptors, Philip Jackson, whose studio is in nearby Cocking, on Friday 21 June. In an engaging couple of hours, he told his capacity audience of the stories behind some of his best known works – of Queen Elizabeth II, Mahatma Gandhi, Sir Alex Ferguson, Sir Matt Busby, Bomber Command heroes and many more, along with his series of Venetian-style figures – with pictures projected on the hall's new three-metre screen. The day before, the building's new audio-visual system was shown off to its full potential with a screening of the enchanting movie *Painting the Modern Garden*. On the longest day of the year, with summer seeming to arrive for the first time, the 70 or so in the audience seemed to love every minute of being in the hall with all the blinds down – including the ice creams available during the interval.



**TALK AND FILM**



## REVUE

A review of the revue *Graffham's Got Talent*, with more pictures, next month.

# Thanks to all the team, says mastermind Phil

*A message from the chairman of Graffham Festival 2024's organising committee Phil Jones:*

As the dust settles, I wanted to thank each and every one who played their part for helping make our festival the huge success it was.

Whether you baked a cake, organised an event, handed out flyers, washed up, planted or arranged flowers, designed posters or programmes, put out signs, organised publicity, dealt with red tape, told your friends, opened your garden or studio, ran a bar, sang a song, danced a dance, totted up takings or simply bought a ticket, you all contributed in your own way.



...a summer arts celebration

I could go on about community spirit and why Graffham is so special, but I think we all already appreciate that. All proceeds will go to village causes. We're still sorting out the accounts, but it should be a healthy sum.

# Bill's bygones: First festival, Withy ladies, revels

A regular feature in which joint editor Bill Barrett looks back at what was happening in the village and the wider world this month in the past.

**10 years ago – July 2014:** Graffham's first arts festival raises £1,464. June Challen opens the refurbished pavilion at the Recreation Ground. Village stalwarts Allan (long-serving PCC Treasurer) and Sue Gordon leave Graffham. The Cricket Club actually wins the needle cricket fixture against the Tennis Club at the end of Tennis Week. Israel launches Operation Protective Edge against Hamas in Gaza. Malaysia Airlines Flight MH17 is shot down over Eastern Ukraine by pro-Russian separatists. FIFA World Cup hosts Brazil are beaten 7-1 in the semi-finals by Germany. Glasgow hosts the Commonwealth Games. In *Graffham Parish News* William Godman-Dorington pens an obituary for his late mother Rosie.

**25 years ago – July 1999:** Jane Pine-Coffin, Janet Wakeford and Ruby Allen win their first trophies at Graffham Garden Group's annual flower show. MPs Andrew Tyrie (Chichester) and Virginia Bottomley (South-West Surrey) express constituents' concerns about genetically modified food when visiting Zeneca Agrochemicals in Fernhurst. In their final match, following the announcement of the sale of his estates at Rogate and Stedham, Kerry Packer's Ellerston polo team lose 12-8 to Pommery in the Gold Cup final at Cowdray Park. The Foresters and the Empire Hall are venues for two Petworth Festival events. Bridles and saddles worth £10,000 are stolen from a tack room in Heyshott – by thieves using wheelbarrows. The UK number 1 single is Ricky Martin's *Living on a Prayer*. Deaths of Muriel Samways aged 91, the last of the three 'Withy Ladies' (the others being Miss Scott and Miss Richards), and Kate Bertram (née Ricardo), of Graffham's Ricardo's, zoologist and Cambridge University don (86).

**50 years ago – July 1974:** Graffham Rector Canon Bradbrooke, in a sermon at St Giles, declares the root cause of inflation is greed and exhorts the congregation to live within its means. Graffham Garden Group's annual flower show attracts 350 entries from 66 competitors. 1st Graffham & Heyshott brownies win first prize at the Brownies Diamond Jubilee Revels at Rogate. Turkey invades Cyprus. The British Lions defeat the Springboks 26-9 in the Third Test, then draw the Fourth Test to win the series 3-0. West Germany beat Holland 2-1 in the final to win the FIFA World Cup. Jimmy Connors and his fiancée Chris Evert are the singles winners at Wimbledon. Gary Player wins the British Open and Eddy Merckx the Tour de France. George McCrae's Rock Your Baby is UK number 1.

# A Dicker returns from Downunder

A woman born in Graffham at the tail end of World War II who migrated with her family to Australia as ‘ten pound poms’ in the early 1950s made a rare return to the village in late May. Susan Sykes’ parents were Noel Dicker, a founding father of the legendary Graffham Rustics amdram group, and his wife Doris née Money, whose father George ran the bakery next to Pescods Stores in days gone by.

Susan was born in April 1945, a month before VE Day, in Elm Cottage, The Street, and has happy memories of her days in Graffham before her family left to make a new start on the other side of the world.

She attended the village school, where her best friend was the rector’s daughter, Janet Townroe, and remembers going, armed with the family ration books, to the shops at Pescods and at the south side of the Foresters Arms.

Their home also doubled as the location for the village’s weekly surgery: “My mother Doris set up our sitting room for Dr Druiitt’s afternoon appointments.” She remembers one occasion when her younger brother Jason was one of his patients – to remove an entire stick of chalk he had shoved up one nostril in the infant school!

## SPECIALISING IN RESTORATION OF TRADITIONAL HERITAGE BUILDINGS

All aspect of roofing and construction  
completed

Family run business with over 30 years of  
experience



✔ Tiling

✔ Slating

✔ Flat roofs

✔ Repair works

✔ Chimney works

✔ Lead works

✔ General Building

  
NEW HEIGHTS  
ROOFING AND CONSTRUCTION

CONTACT

✉ [info@newheightsroofing.co.uk](mailto:info@newheightsroofing.co.uk)

☎ 07508 468418

With most of the village, she excitedly huddled in front of the tiny black and white television set that was given pride of place in the Empire Hall to screen the Coronation of Queen Elizabeth II. She also attended many of the Christmas parties thrown there for the community's children by the Nawab of Bahawalpur, who lived then at Selham House. "I was always given a jigsaw puzzle as a present, which I hated!" she smiled.

She was nine when the family upped sticks for Australia in 1954 and "complained bitterly about leaving Graffham... I was very happy here."

They settled initially in Adelaide before moving to Tasmania and then finally in Melbourne, where Susan has spent the past 52 years, marrying there and raising two daughters while working as a drama teacher. She has returned to the UK for holidays and family visits several times over the years, always making a point of returning to the village of her birth. She spent a week here this May with husband of 54 years Steve, staying at the Brook Barn airbnb. Prior to that, her most recent visit was in 2016, a year after the passing of her father Noel – when, as a keen bellringer, she was invited to join in the peeling of the bells at St Giles: "There was just one bell to ring when we lived here – not the six that you've got now."

She spent a few months in 1968, in her early 20s, staying with her relative Florence Blakesley who lived at the time in All Saints Cottages. As a child, Susan used to visit Aunt Flo there for sweets and treats. Miss Blakesley and her brother Sid were the first residents to move into All Saints when the homes were opened in 1953.

How has the village changed since her time?

"Once I got back here, I was able to figure my way round pretty easily. The place has changed much more since I was last here in 2016 than it had in the previous 60 years after we left. There is so much more traffic now. When I lived here, you could walk the entire length of The Street and not see a single car – now the traffic's as bad as you get in a big city, particularly at school run times. But it's still such a beautiful place with that same close community bond."



Susan outside Elm Cottage where she spent the first nine years of her life.

# Graffham Chronicles: Hoofbeats hereabouts

*As the horse sports season reaches its peak, historian Pauline Goodwin takes a look at the neighbourhood's close relationship with the animal.*

*The history of mankind is carried on the back of a horse. - Anon*

It would be certainly true to say that Graffham is no one-horse village. Horses abound in the paddocks and hoofbeats reverberate along our roads – a welcome sound that resonates with villagers' roots. Our equine bond is strong here. Indeed, human/horse interaction in West Sussex dates back to at least 500,000 BC as shown by the discovery of horse remains nearby in Boxgrove – with a spear wound to the shoulder, indicating that hunting of horses was taking place there and then.

However, it wasn't until 2500 BC that the domestication of horses had begun. British tribes, like the Iceni, led by that great horsewoman Boudicca, could assemble thousands of chariots when the Roman conquest began. And so, the recognition of the horse as a food source began to evolve into an appreciation of its many other qualities. Harnessing horses' power transformed life for humans.

This relationship has always had an edge to it as the horse can be unpredictable, as was illustrated by the accident that befell one of Graffham's spiritual fathers, Bishop Samuel Wilberforce. He died in a riding accident on his way to meet his friend from Oxford, William Gladstone, on 19 July 1873.

Horse improvement, or horse breeding, began in medieval times with King John importing a hundred Flemish stallions and Edward III bringing in 50 Spanish steeds. By the 17th century, diversity in horse types meant that certain breeds were suitable for specific purposes. The horse had transcended its origins and become that noble steed that struts disdainfully in Graffham pastures.

One of the last working equines in Graffham that I remember was the pony kept by the Lavington Stud which pulled its handsome little Cottesmore Green cart to remove horse manure from the paddocks. This cart was kept at Calloways in the open-fronted barn next to the weigh bridge. After equines ceased to be the nation's workhorse, their numbers declined rapidly.

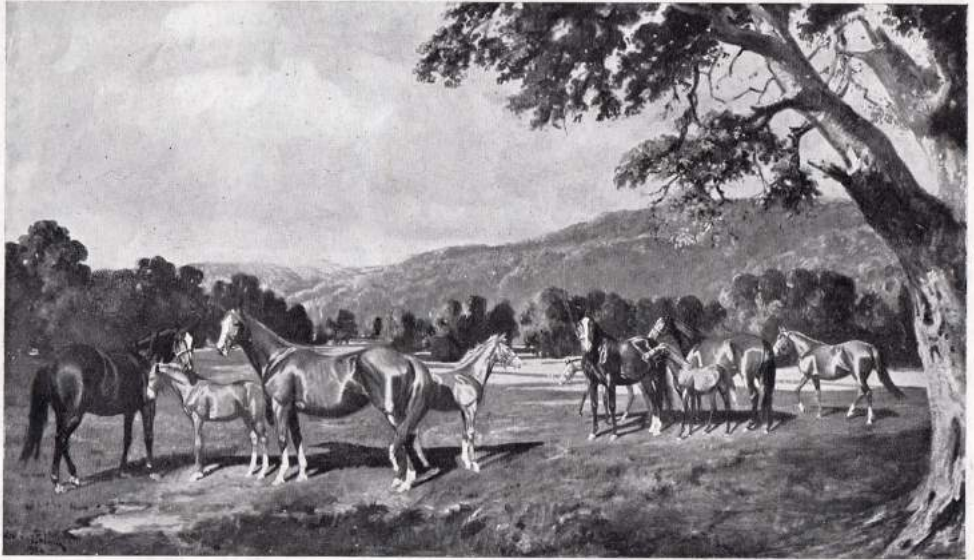
At Graffham, however, the horses that became part of our village identity were those connected to leisure and sport. It could be said that there were three groups of them – thoroughbreds for racing, smaller athletic breeds for polo, often thoroughbreds, and thirdly beasts suitable for a wide spectrum of leisure riders. This article focusses on that first category. Next month we'll look at the other two.



# HORSES AND PICTURES AT LAVINGTON PARK

THOSE of us who will be at Goodwood this week will probably think, without reminder, of Lavington, lying at the foot of those same Downs, a few miles away. Those lovely meadows, famous from ancient times for their sheep, are to-day given up to a still more famous breed of stock—Lord Woolavington's stud of thoroughbreds, where Captain Cuttle and Hurry On hold their court. Beautiful horses are Lord Woolavington's delight. His affection for them seems to have penetrated and directed all his other interests.

One cannot help concluding that he so enjoys the late eighteenth and early nineteenth century architecture which we have just seen exhibited in his house at Lavington, because that period was the hey-day of horses—and such trim buildings form the background to Pollard's and Alken's pictures. Those splendid equipages that transport about the London streets the distillations of the house of Buchanan are another reflection of Lord Woolavington's sense of period. The superb horses, the massive construction and bright steelwork of the dray and the



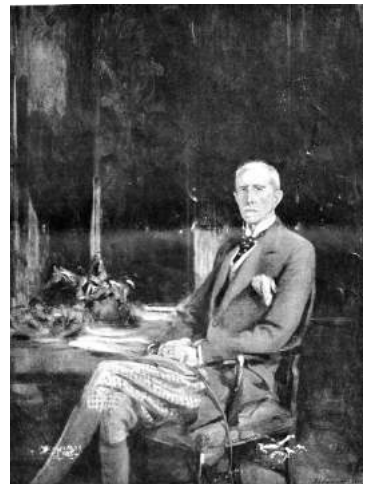
MARES AND FOALS IN A PADDOCK AT LAVINGTON PARK STUD, 1924, BY LYNWOOD PALMER.  
Left to right.—Wet Kiss and foal. Cheshire Cat and foal. Pamfleta and foal. Windy Ridge and foal. Joie de Vivre.

The July 1925 edition of *Country Life* included an extensive feature on Lord Woolavington (below) with many pictures of horses in his Lavington Park (above).

James Buchanan, the first Baron Woolavington, became entranced with thoroughbred horses and horse racing while visiting his estate in Argentina. He initiated the breeding of thoroughbreds in Graffham at his Lavington Stud. He was elected to the Jockey Club in 1927 and for 20 years, in the early 1900s, he was a significant owner with runners such as Hurry On, Captain Cuttle, Coronach and Epsom Lad. His horses won the Derby twice, helping make Lavington Stud a renowned centre of excellence.

He also had a keen interest in art, so, just as his

► *Continued on next page*



► *Continued from previous page*

stables and paddocks were filled with thoroughbreds, his house at Lavington Park was filled with paintings of them, too. He commissioned leading artists of the time like Lynwood Palmer, Ben Marshall and John E. Fernley to paint his horses. The painting of Hurry On was considered by *Country Life* in its 25 July 1925 edition to be “an unrivalled horse painting”.

The whole community became involved in equine activities. Goodwood Races and Ambersham Polo were key events in the village calendar. Ralph Hamilton, who lived at Glebeland, recalled in 1974 at the age of 74: “Thirty or 40 villagers used to walk over the Downs to Goodwood races... and there was a lot of interest in racing, particularly because of Lord Woolavington’s two Derby winners.”

This tradition was maintained through to the late 1970s as my father Richard Challen (who had been Calloways Farm’s foreman) and Eric Miles (the farm’s carpenter) would do the annual walk, with Goodwood tickets courtesy of the stud.



Lavington horse grooms were also given free tickets. Wally Claydon (Head Stud Groom) recalled that “they had to return early for the show of yearlings for the house party from Lavington Park”. More recently, the Macdonald-Buchanan family successors to Lord Woolavington held their house parties at The Malt House, in The Street opposite the Foresters Arms.



Another link between the stud and the village was the daily morning walk when John Durrell would lead the key sire around the village. The first of them that I remember was called Sing-Sing, described by Wally Claydon as “very quiet and very intelligent – a very nice horse”. Sing-Sing was succeeded by Relco with the trusted John Durrell still leading the village jaunts.



A succession of horse-savvy people has been attracted to Graffham because of its association with the creature, including the legendary Florence Nagel who bought Westerlands in 1942 to breed and train thoroughbreds. She finally won her landmark battle to overturn the ban on women trainers when she was 70.

Lavington Stud also attracted many horse experts. Fred Darling was Lord Woolavington’s first trainer and he

Three legendary  
Graffham horses, from  
top: Sing Sing, Hurry On  
and Captain Cuttle.

had most excellent results, bringing on Hurry On and training the two Derby winners, Captain Cuttle and Coronach.

After Lord Woolavington's death, Lavington changed its focus under Lady Mac and became a nursery stud responsible for producing foals rather than training them.

Within this new set up, Andrew Toze, who still lives hereabouts today, discussed his work as a groom in 2015. From a

farming and military background, he was with the Blues and Royals between 1974 and 1979, proudly riding down the Mall in 1976 on the legendary Sefton, the horse that was severely injured in the 1982 Hyde Park bombing which claimed the lives of four soldiers and seven horses. Despite suffering 38 penetrating wounds and a severed artery in his neck, Sefton miraculously recovered and lived until 1993.

During those days as a nursery stud, silverware could not be used as a yardstick with which to measure Lavington's accomplishments. Nonetheless, it was regarded as one of the best in the land. Polo umpire Colonel Kennedy and vet in charge at Goodwood Races Tim Reid attributed its success to the isolation of Graffham, which helped eliminate spread of disease, to having its own water supply and also to the quality of its grass.

Colonel Kennedy stated: "The grass is perfect and we always seem to have plenty when other farms haven't." Tim Reid described the stud as a "British equine idyll – even at the end of summer the grass in the paddocks was still flourishing and would not be out of place on a farm in Tipperary."

This would explain why in the mid-1950s a brand-new grey lorry was bought to take the prized freshly-cut Lavington straw to the Newmarket stud, which was also owned by Lady Macdonald Buchanan. My father would drive and I, at three years old, would ride shotgun!





A once familiar site in the fields around Calloways, yearlings pictured a decade or so ago.



# GRAFFHAM TENNIS CLUB

## Tennis Week 2024

Friday 19 July – Friday 26 July

Fri 19 July	● 4pm	● Pickleball
	● 5.30pm	● Parent and child tennis / ball machine  Bring and share barbeque/picnic - Pavilion bar open
Sat 20 July	● 9.30am	 Coffee and bacon butties
	● 10am – 12.30pm	● Mixed Doubles
	● 1pm	● Mixed Doubles final
	● 2pm	● Parent and kids two wicket cricket match ● Pavilion bar open / Bring Picnics
Sun 21 July	● 10am	● Men's Doubles tournament
	● 1.30pm	● Men's Doubles final
Mon 22 July	● 10am -12noon	● Seniors tennis
	● 4.30pm – 6pm	● Adult coaching
Tue 23 July	● 1pm – 2.30pm	● Adult coaching
	● 4pm – 6pm	● Graffham versus Rogate Juniors match
Wed 24 July	● 9.30am – 1pm	● Junior/Academy coaching
	● 6pm	● Hampshire League match
Thurs 25 July	● 9.30am – 1pm	● Junior/Academy coaching
	● 6pm	● Friendly match versus Petworth
	● 7.45pm	● Club curry at the Pavilion
Friday 26 July	● 9.30am – 1pm	● Junior/Academy coaching
	● 6pm – 8pm	● Club night / Olympic opening ceremony
	● 6.30pm	● Graffham tennis alumni tournament

ENTRIES for ANY events PLEASE use our  
admin@graftthamtennis.co.uk email or SEE BELOW and CALL or email [NOW!](mailto:admin@graftthamtennis.co.uk)

Richard Hopp	richard@hoppcoaching.co.uk	Junior coaching
Simon Longman	 07979 590891	Men's Doubles
Richard Gyles	 0797 6243297	Mixed Doubles
Denise Clay	 07771 948343	Curry night tickets

*The fickle weather has meant mixed fortunes for Graffham's sports teams in the early part of the summer but hopes are high for a hot and sunny tennis week starting on 19 July (see opposite).*

## Graffham Tennis Club



**Club tournaments** The Mixed Doubles preliminary rounds evening ended up being a one-set knockout comprising quarter and semi-finals. Brilliantly organised by Andy Craig, two of the quarter final sets lasted more than an hour, notably the match between David and Philippa Sanders and Richard Bates and Sally Pattie. With the other matches waiting anxiously to come on, the Sanders pair edged the win 15-13 in the tiebreak – a record we think for the club. In the end the two pairs to emerge from the evening were habitual winners Andy Craig with Emma Amin, and David Sparkes with Olive Amin. The final was played on Saturday 8 June, with music from the wedding tinkling in the background (see page 17). Despite some formidably hard hitting and athletic volleying, David and Olive couldn't get past the old hands, who keep the trophy for another year. There must be a combination of players which could knock them off their perch!



**Love all: Mixed doubles finalists (from left) David Sparkes, daughter and mother Olive and Emma Amin and Andy Craig.**

In the Ladies' Doubles four impressive pairs lined up for the semi-finals, to be played as the best of three sets. Angie Thornley and Anna Moore were drawn against the 'old hands' of this tournament, Emma Amin and Sian Green, and despite coming close in the first set, could only manage a 7-5, 6-1 against the current holders. In the other match, the Amin youngsters, Olive and Maizie, threw everything at the A team pair of Sam Adams and Sarah Selman but lost out 6-2, 6-2. The final should be a classic – watch out for the date and time of this on Facebook's Graffham Noticeboard.

## Graffham Tennis Club East Hants results

20 May	Lost 0-7	Men's Doubles	Div 4	v Haslemere C
22 May	Drew 4-4	Ladies' Doubles	Div 1	v Steep A
28 May	Lost 2-6	Men's Doubles	Div 4	v Alton B
3 June	Won 6-2	Mixed Doubles	Div 2	v Midhurst
5 June	Won 5-3	Ladies' Doubles	Div 1	v Medstead A
11 Jun	Won 5-3	Men's Doubles	Div 4	v Fernhurst B
12 Jun	Lost 1-7	Ladies' Doubles	Div 1	v Haslemere A

**Summer leagues** Astonishingly, considering the weather, the league teams have managed to get through all of their summer fixtures without cancellation so far, though both the mixed and men's teams have ended up drenched. The newly laid courts, which should be painted shortly, have proved themselves more than up to the task with their grippy surface. After a slow start, the men have begun to notch up some victories, with Ollie Edwards, Barry Selman, David Sparkes and Canice Hogan getting the crucial first one versus Fernhurst.

The Ladies A have performed well up in the hallowed heights of Division 1 while the Mixed Doubles team managed a 6-2 victory against local rivals Midhurst. The Ladies B are about to kick off their season with an away match at Medstead. More reports next month.

## Graffham Tennis Club East Hants League home fixtures: June

**Do come and spend a summer's evening supporting your teams!**

1	Mon	6.30pm	Mixed Doubles	Div 2	v Headley B
10	Wed	6.30pm	Ladies' Doubles	Div 4	v Steep C
24	Wed	6.30pm	Ladies' Doubles	Div 4	v Fernhurst A

## Anyone for croquet?

The nearest croquet club to Graffham – Rother Valley, at Duncton – is hosting a 'taster day' for anyone interested in the sport, on Saturday 6 July from 10.30am to 1.30pm, on its lawns next to Duncton Village Hall, just three miles from Graffham Village Shop. It's a chance to try out the various versions of the game, with some tuition if wanted, in enjoyable and sociable surroundings. Just wear flat shoes – everything else will be provided. Rother Valley Croquet Club already counts a number of Graffham residents as members. It boasts two full-size lawns and a practice lawn, alongside a club house. A warm and friendly welcome is promised! See [rothervalleycroquet.co.uk](http://rothervalleycroquet.co.uk) or email [rothervalleycroquet@outlook.com](mailto:rothervalleycroquet@outlook.com).

# Graffham Bowls Club

by Secretary Liz Pegram

The season is going well – winning all our home games and losing two away. On 2 June we held the President's Salver Competition. Lucy Tyrrell (pictured right) and Kym Pegram (left) were the victors. Club President Vera O'Hara (centre) presented the salver.



If there is anyone out there who would like to try bowls, come along on a Monday evening 6pm, weather permitting. All you need to bring are flat shoes. You will be made very welcome.

Graffham Bowls Club Home fixtures: June			
Spectators welcome			
10	Wed	6.30pm	v Midhurst
14	Sun	2pm	Ladies' Day
17	Wed	6.30pm	v Stedham
25	Thu	6pm	v Billingshurst
28	Sun	2pm	Jubilee Shield

# Graffham Ladies Cricket

A second postponement because of rain befell the Ladies' cricket team, who were due to play away at Petworth on 13 June. The match has been rescheduled for 5 July. Practice looks set to continue on Thursday evenings at 6pm. All welcome.

# Polo final's round the corner

The highlight of the polo year is under way at Easebourne this month. The Cowdray Gold Cup attracts teams of the highest calibre. This year, 18 will compete with the final played on Sunday 21 July. UAE are the most local, based in Selham.



# New signpost points the way

There's no excuse for not being able to find the Rec, after the Recreation Ground Committee, with financial contributions from the sports clubs using the ground, installed a new signpost, on The Street opposite the War Memorial, pointing out where it is.

# W. Bryder & Sons

est. 1863

The Gables  
Tillington  
GU28 9AB  
Tel: 01798 342174

95 Lower Street  
Pulborough  
RH20 2BP  
Tel: 01798 872000

Email: [wbryderandsons@hotmail.co.uk](mailto:wbryderandsons@hotmail.co.uk)

## 5<sup>TH</sup> GENERATION LOCAL FAMILY RUN INDEPENDENT FUNERAL DIRECTORS

24 Hours Service  
Private Chapel of Rest  
Monumental Stones supplied  
Pre-Paid Funeral Plans available  
Grave Maintenance service



 KLE Decorators Ltd  
Unit C12  
New Barn Farm  
Funtington  
Chichester  
West Sussex  
PO18 9DA

 07880 317071

 [hello@kledecorators.co.uk](mailto:hello@kledecorators.co.uk)

 [kledecorators.co.uk](http://kledecorators.co.uk)

### We are totally committed to the finest quality of painting and decorating that there is.

Be it the high-end painting & decorating of apartments and offices, refurbishment of kitchens & bathrooms, full interior refurbishments, or renovation works on a listed building, we ensure that all of our work is carried out thoroughly, with due diligence by all our painters & decorators.

### Our decorating services include:

- Painting
- Spraying
- Wallpapering
- Specialist coatings
- Traditional paintwork
- Feature walls
- Coving
- Plaster and render repairs
- Woodwork repairs
- Special effects such as graining, marbling, murals





# Graffham Parish News' jazzy July quiz

Ten quick fire questions from Bill Barrett to test your local, topical and wider general knowledge. Answers at the top of page 63 (no cheating!)

1 Graffham schoolchildren were taken on a trip from Selham station to Wembley this month 100 years ago - to see what?

2 Where in Chichester was a Roman military causeway discovered last month?



3 According to an unsubstantiated rumour, which senior Nazis visited the Spread Eagle Hotel in Midhurst during Glorious Goodwood week in 1939?

4 How old will Queen Camilla be on 14 July - 69, 73 or 77?

5 Artist Louis Wain, who died in July 1939 aged 78, was known for his anthropomorphised illustrations of which animals?



6 What is the collective noun for a group of rooks?

7 What sinister characteristic is shared by Open Championship winners Bob Charles (1963), Phil Mickelson (2013) and Brian Harman (2023)?

8 Who was the first black player to win a singles' title at Wimbledon?



9 Which Harold Pinter play, currently at Chichester's Minerva Theatre, starred Alan Bates and Donald Pleasance in the original 1960 stage production and the 1963 film?

10 Which Gilbert & Sullivan operetta, a lampoon of the House of Lords involving fairies, has the adjunctive title *The Peer and the Peri*?



- Puppy Training
- Dog Agility
- Pet Gun Dog Classes
- 1-2-1 Sessions

**Dogs Doing Better**  
Kilsham Farm, Petworth GU28 0LJ  
[www.dogsdoingbetter.com](http://www.dogsdoingbetter.com)  
Call Liz 07702 009272  
Or email:  
[dogsdoingbetter@gmail.com](mailto:dogsdoingbetter@gmail.com)



**Hunter's Hounds**  
*Dog grooming*  
07716 136437  
[huntershounds7@gmail.com](mailto:huntershounds7@gmail.com)  
Graffham, Petworth, Midhurst  
and surrounding areas.

# Briefing from the belfry

*An update from the village's bell ringers, by Philippa Sanders.*

Our bell ringers have been much in evidence throughout Graffham Festival, opening the festivities with a ring before the inaugural concert and running the 'Art of Ringing' session, heralding the festival church services and celebrating weddings. They even managed to recruit a new ringer.

The band was also part of 'Ring for Peace', along with many towers around the country marking the 80th anniversary of the D-Day landings on 6 June at 6.30pm.



Tower captain Howard (left) and John Pescott (right) after receiving their SCACR membership certificates from an association representative.

Earlier, Graffham was fortunate to have two bands of visiting ringers treating us to quarter-peals. St Giles' particular set up of bells, ringing from the ground floor with fairly standard weights, tends to make us a popular tower, as was seen when Graffham hosted a large group of ringers from across the county for a Sussex County Association of Change Ringers (SCACR) event. (Apparently, we also have a fine reputation for our cakes!)

Other June highlights have included a first Sunday ring for Fenella Forsyth and a first ring marking a wedding for John Pescott.

John and Tower Captain Howard Pescott were also presented with their membership certificates from the SCACR. Graffham's bells are in good hands.



## TEDDY TIME IN THE PAVILION TODDLER GROUP

Wednesdays 10.15-11.30am  
Pavilion, Graffham Rec

No charge. All welcome.  
Just come along!

# Petworth Festival brings brass trio to St Giles

The award-winning Solis Brass Trio will be performing at St Giles Church on Friday 12 July at 5pm, as part of Petworth Festival. The hour-long programme by the trio will include works by Rimsky-Korsakov, Beethoven and Brahms. Tickets from [petworthfestival.org.uk](http://petworthfestival.org.uk). The group will be performing at Tillington earlier the same day, so make sure you book for the right session. Petworth Festival runs from 10 to 27 July with more than 40 events, covering classical, jazz and rock music, comedy, talks and more.



## Petworth Area Churches Together's busy summer

### Service with author Kate Mosse and choirs opens festival

Petworth Area Churches Together (PACT) opens Petworth Festival on Wednesday 10 July at 6.30pm with its now traditional Festival Service at the town's St Mary's Church, with guest speaker author Kate Mosse and music by the church's own choir, plus Royal Academy of Music star pianist Kira Frolu and Petworth Chorus, which includes a goodly number of Graffham and East Lavington residents (see page 13). Books written by Chichester-based Kate Mosse have sold more than five million copies in 38 languages. No booking is necessary – and all welcome.



**Summer holiday bible club** PACT's Kids Summer Holiday Bible Club will be held from Monday 29 July to Friday 2 August at Petworth's Sylvia Beaufoy Centre. All primary school aged children welcome. Booking via [sylviabeaufoy.clubsbuddy.net](http://sylviabeaufoy.clubsbuddy.net)

**Family Support Worker joins committee** PACT has welcomed Family Support Worker for the Petworth area, Kirsty Hewitt, to its committee.

**Sadness at closure of Petworth United Reformed Church** PACT says it is "very sorry to learn of the closure" of the Petworth United Reformed Church (URC), which has served as "a very happy venue" for PACT activities during the past 40 years. "We thank them for all the help they have been to us and wish their congregation every blessing for their future," PACT added.

# Who's doing what at St Giles in July

Here's the rota for this month's 10.30am services. If you cannot do your slot, please arrange a swap and advise Diane Bellis at [diane.bellis@gmail.com](mailto:diane.bellis@gmail.com) and Rev Vivien at [reverendvivien@gmail.com](mailto:reverendvivien@gmail.com)



	Welcomers	Reader	Reading	Refreshments
7	Marie Bracey	Rich Sabin	2 Corinthians 12 v2-10	Holly and Rich Sabin
14	TBA	Nettie Lanaghan	Ephesians 1 v3-24	Nettie Lanaghan
21	Ann Brown	TBA	Ephesians 2 v11-end	TBA
28	TBA	Ann Brown	Ephesians 3 v14-end	TBA

Flowers	
7 and 14	Diane Bellis
21 and 28	Nettie Lanaghan

Cleaning	
Ginny Barrett and Diane Bellis	

## Other denominations locally

**Methodist:** Midhurst. *Minister:* David Muskett *Tel:* 01730 233436. *email:* [superintendent@esanddcircuit.org.uk](mailto:superintendent@esanddcircuit.org.uk). *Web:* [midhurstmethodist.com](http://midhurstmethodist.com) *Worship:* Sundays 10.00am, and Café Church 1st and 3rd Wednesdays 10.30am.

**Roman Catholic:** The Catholic Churches of Saints Anthony and George, Duncton, The Divine Motherhood and St Francis of Assisi, Midhurst, and The Sacred Heart, Petworth. *email:* [petworth.abdiocese.org.uk](mailto:petworth.abdiocese.org.uk). *Tel:* 01798 342169. *Web:* [www.petworthcatholic.org](http://www.petworthcatholic.org)

Mass					
Sun	8am	Duncton	Thu	9.30am	Petworth
	9.30am	Midhurst		12noon	Midhurst Convent
	11am	Petworth	Fri	6.30pm	Petworth
Tue	10.30am	Petworth	Sat	9.30am	Midhurst
Wed	9.30am	Midhurst		5.30pm	Petworth

**Society of Friends (Quakers):** St Anne's Community Centre, St Anne's Hill, Midhurst, GU29 9NN. *Web:* [sussexwestquakers.org.uk](http://sussexwestquakers.org.uk) *Meetings:* 2<sup>nd</sup> and 4<sup>th</sup> Sundays 10.30am.



## TAIZÉ PRAYER

### song, prayer and silence

Sunday 21 July 6.30pm

All Saints Chapel, Graffham (opposite shop)

All welcome to this short ecumenical service based around a pattern of worship from the Taizé Community

# What's on at our village church and chapel

- All residents of and visitors to Graffham are welcome to all services.
- St Giles Church is at the far south end of Graffham Street, near the Downs.
- All Saints' Chapel is opposite Graffham Village Shop.
- Both St Giles Church and All Saints' Chapel are open daily.
- See [stgilesgraffham.org](http://stgilesgraffham.org) or Facebook's @stgilesgraffham for any changes.
- Teddy Time is at the Rec Pavilion every Wednesday 10.15 to 11.30am.

July				
1	Mon	12 noon	Burial of ashes of Michael Stroud RIP	St Giles Church
2	Tue	9.30am	Morning Prayer then Pilgrims at 10am	All Saints Chapel
		3pm	PCC Fabric Group meeting	
3	Wed	7pm	PCC meeting	The Rectory
5	Fri	1.30pm	Funeral of Betty Ringe RIP	St Giles Church
6	Sat		No Come and Sing! this month	
7	Sun	10.30am	Parish Eucharist Trinity 6	St Giles Church
		6pm	BCP Evensong	All Saints Chapel
11	Thu	7pm	Admission of Churchwardens Service	St Mary's Easebourne
13	Sat	10am-12noon	Bellringing practice	St Giles Church
14	Sun	10.30am	Parish Eucharist Trinity 7 and Sea Sunday	St Giles Church
		6pm	BCP Evensong 6	All Saints Chapel
16	Tue		PCC Community Group meeting	
17	Wed	12.30pm	Food with Friends	The Rectory
21	Sun	9am	BCP Holy Communion	St Giles Church
		10.30am	Trinity 8 'Third Sunday' Service of the Word	St Giles Church
		6.30pm	Taize Prayer Service	All Saints Chapel
26	Fri	3pm	Wedding rehearsal	St Giles Church
27	Sat	1pm	Wedding of Ali and Ami	St Giles Church
			Wedding of Amy and Dene	St Peter's Woolavington
28	Sun	10.30am	Parish Eucharist Trinity 9	St Giles Church

We rely on the generosity of villagers and visitors to safeguard the future of Graffham's St Giles Church and the ability of our parish to deliver its mission to the community it serves – including this magazine. Please support it through a donation – preferably a regular one via our Parish Giving Scheme. You can also raise donations for St Giles virtually every time you shop online – at no extra cost to you. For full details, see [www.bit.ly/stggive1](http://www.bit.ly/stggive1)

# What's on in and around the village

For all St Giles and All Saints events, see pages 59. For all sports dates, see page 50-53.

July				
2	Tue	10.45am	Arts Society of Midhurst talk on The Art of Visual Deception	Midhurst Methodist Hall
		2pm	Arts Society West Sussex on <i>The Perfect House - Andrea Palladio's Venetian Villas</i>	Fittleworth Village Hall
		7pm	Graffham Village Shop Association AGM (see page 11)	Empire Hall
3	Wed		Seaford College term ends	
		7pm	Graffham Parish Council meeting	Empire Hall
4	Thu	7am-10pm	General election voting	Empire Hall
		10am	UKHarvest surplus food market	Sylvia Beaufoy Centre, Petworth
5	Fri	1.30pm	Funeral of Betty Ringe	St Giles Church
		4-8pm	Family Fridays (see page 7)	Rec
6	Sat	9am-2pm	Midhurst Farmers Market	Midhurst
		5.30pm	Petworth Chorus summer concert Filmharmonic (see page 13)	Herbert Shiner, Petworth
10	Wed		Petworth Festival (till 27 July)	Petworth
11	Thu		Festival of Speed (till 14 Jul)	Goodwood
		2.30pm	Thursday Club visit (see page 15)	Nonnington Farm
12	Fri		Petworth Festival concert by Solis Brass Trio (see page 57)	St Giles
13	Sat	2.30pm	Graffham Garden Group summer flower and produce show (see page 21)	Empire Hall
		8pm	Straw Dogs Irish folk band (see page 24)	Three Moles
14	Sun	7pm	Folk music night	Three Moles
15	Mon	6.15pm	East Lavington Parish Council meeting	Seaford College
19	Fri		Graffham Tennis Week (to Fri 26 July) (see page 50)	Rec
		4-8pm	Family Fridays (see page 7)	Rec
21	Sun	10am-1pm	Graffham Down Trust annual picnic (page 22)	Bowley's Reserve
			Cowdray Park polo Gold Cup final	Easebourne
23	Tue		WSCC schools term ends	
24	Wed	12.30pm	Lunch Club <sup>2</sup>	Empire Hall
26	Sat	10-11am	Community garden work party	War Memorial
		9am-1pm	Petworth Farmers Market	Petworth
30	Tue		Glorious Goodwood (to Sat 3 Aug)	Goodwood

<sup>1</sup>Great Feet foot health professional: Available to Graffham Health Support Association members only.

**<sup>2</sup>Lunch Club:** Graffham Empire Hall Lunch Club meets on the fourth Wednesday of the month at 12.30pm for 12.45pm for a home cooked two-course meal and coffee, at £8 a head. Please book via Sarah on 01798 867567.

Regular weekly activities (for notes, how to book, etc, see below)			
Mondays	9-10am	Fitflows Fitness <sup>2</sup>	Empire Hall
	Daytime-evening	Osteopath <sup>3</sup>	Empire Hall
Tuesdays	8.30am-12noon	Post Office	Empire Hall
	9am	Strength and mobility with Abi Martin <sup>1</sup>	Westerlands
Wednesdays	Daytime-evening	Osteopath <sup>3</sup>	Empire Hall
	9-10am	Yoga <sup>4</sup>	Empire Hall
	10.15-11.30am	Teddy Time toddler group <sup>5</sup>	Pavilion
	11.15am-12noon	Pilates <sup>6</sup>	Empire Hall
	1.45-2.45pm	Rusty Racquets adults tennis coaching <sup>7</sup>	Rec
	6pm	Boot camp with Nina <sup>1</sup>	Westerlands
	7-8.30pm	Badminton <sup>8</sup>	Empire Hall
Thursdays	Daytime-evening	Osteopath <sup>3</sup>	Empire Hall
	9am	Boot camp with Abi Martin	Westerlands
	10.45-11.45am	Ease Into Exercise <sup>9</sup>	Empire Hall
	6-7.15pm	Yoga <sup>4</sup>	Empire Hall
Fridays	9-10.15am	Yoga <sup>4</sup>	Empire Hall
	9am-3pm	Physiotherapy clinic <sup>10</sup>	Empire Hall
	evening	Tennis Club social evening	Rec
Saturdays	8am	Hard core exercise with Nina <sup>1</sup>	Westerlands
	10am	In motion with Gareth <sup>1</sup>	Westerlands
Sundays	5pm	Pickleball <sup>11</sup>	Empire Hall
	5pm	Casual football <sup>12</sup>	Rec

**Empire Hall:** For booking and contact details, see Directory, inside back cover.

**<sup>1</sup>For all Westerlands events:** Book online at [www.westerlands.com/experiences/wild-fit](http://www.westerlands.com/experiences/wild-fit)

**<sup>2</sup>Fitflows Fitness:** Contact Susie Bush 07870 219956.

**<sup>3</sup>Osteopath:** Bookings required. To make an appointment, for daytime or early evening, contact Anna Shawcross on 01798 867523 or see [www.annashawcross.co.uk](http://www.annashawcross.co.uk)

**<sup>4</sup>Yoga:** Deborah Albon on 07790 867009.

**<sup>5</sup>Teddy Time:** No charge. All welcome. Just come along.

**<sup>6</sup>Pilates:** Contact Nicky Capes on 07990 517858 or 01730 812297.

**<sup>7</sup>Rusty Racquets:** Contact Richard Hopp at [richard@hoppecoaching.co.uk](mailto:richard@hoppecoaching.co.uk), on 07904 069457.

**<sup>8</sup>Badminton:** Contact Louisa Thomas, at [louisa9000@hotmail.co.uk](mailto:louisa9000@hotmail.co.uk). All welcome.

**<sup>9</sup>Ease Into Exercise:** Contact Susie Bush 07870 219956.

**<sup>10</sup>Physiotherapy:** Contact Serena Cooper on 07884 445983 or at [serenacooper.physiotherapy@outlook.com](mailto:serenacooper.physiotherapy@outlook.com).

**<sup>11</sup>Pickleball:** Contact Beanie Bradley on 07500 080417.

**<sup>12</sup>Casual Football:** Contact Lucas Thornley on 07767 721997.

## RINGING and SINGING

To join Graffham's bellringers or occasional choir, contact  
Rev Vivien on 01798 867199 or at [hello@stgilesgraffham.org](mailto:hello@stgilesgraffham.org)







T: 01483 208408  
 E: office@ghinn.net  
 www.ghinn.net



For over 50 years Ghinn & Co. have been helping home owners improve and extend their properties throughout Surrey and West Sussex.

**Call now for a FREE, professional quotation from the experts.**



**Quiz answers (from page 55) 1**

- The British Empire Exhibition. 2 Priory Park. 3 Goering and von Ribbentrop. 4 77. 5 Domestic cats and kittens. 6 A parliament. 7 They played left-handed. 8 Althea Gibson, in 1957. 9 *The Caretaker*. 10 *Iolanthe*.

**Paula's Cleaning Services**

Call for Quotation! 07563 722849

House Cleaning, Office Cleaning, Deep Cleans and everything in between!



**New or upgraded system? Call us today to arrange a FREE survey**



- ★ Intruder Alarms
- ★ CCTV
- ★ Entry Phone Systems
- ★ Fire Alarms

t. 03300 945596  
 w. www.scorpio-alarms.co.uk  
 a. Pippin Farm, Toat Lane, Pulborough RH20 1BZ

**THE FLOORING BROTHERS**

[theflooringbrothers.co.uk](http://theflooringbrothers.co.uk)

**LET US PUT THE COMFORT BACK UNDER YOUR FEET!**

Locally based carpet and vinyl fitters and suppliers

Small family business with no large overheads so we offer sensible prices, combined with a friendly personal service from start to finish

Jon: 07595 873598  
 Lucas: 07532 453873  
[info@theflooringbrothers.co.uk](mailto:info@theflooringbrothers.co.uk)



## ME CONTRACTING SUSTAINABLE LAND MANAGEMENT

- Land reclamation and repurposing
- Installing farm tracks
- Drainage
- Bulk excavation work and site clearance
- Aggregates
- Creating and restoring lakes and ponds
- Ditch clearance

hello@me-contracting.co.uk  
07786 161666



## Straight Line Fencing

With 30+ years' experience, we are the leading fencing and groundwork specialists in West Sussex and Surrey.

Quality workmanship assured, whether you need to keep children or horses in, wildlife out or just want security for your home.

01428 685222

s1f@straightlinefencing.co.uk

## Norwood Contractors GARDEN MAINTENANCE

Grass and Hedge cutting,  
Pruning, weeding,  
Planting etc.....

ENQUIRIES:

01798 867 338

Or 07973 370 727



*Anna Shawcross*  
— OSTEOPATHY —

Call Anna 01798 368078

hello@annashawcross.co.uk | 

## Caytons Limited

Stuart A Hail  
Specialist Oil Fired  
Heating Engineer

**Boilers  
Agas**

**Servicers  
Breakdown  
Installation**

Tel 01798 344 213  
M 07779 11 33 43

Email: caytonsltd@gmail.com




**MOLE CATCHING**  
"NO MOLE, NO FEE"  
**WASPS / HORNETS**

CONTACT ANGUS ON 07828 134086  
WWW.ASCOUNTRYSIDESERVICES.CO.UK

# HOOLI.

Design | Marketing | Words | Web


01730 816484

 @hoolidesign

hooli.co.uk | hello@hooli.co.uk

Get in touch with Julia and Rachel

Nº1 West Street, Midhurst

 front.hopefully.desktops

## Martin Taylor

Quality Carpenter, Joiner and  
Cabinet Maker

Fully fitted and freestanding furniture  
a speciality. Cupboards, Wardrobes,  
Radiator Covers, Fitted Kitchens.  
Design service available.

Mobile 07704-524252

Email:- martin@martintaylor design.co.uk  
www.martintaylor design.co.uk

## Water Pipe Repair Services

Allan Marsh

07470 440836

Water pipe repairs  
Water pipe renewals  
Plumbing repairs  
Water leak detection  
Lead pipe replacement  
Drain repairs  
Outside taps fitted  
Sinks, baths and toilets  
Driveway and footpath repairs



## BOOKKEEPING SERVICES

for small business and sole traders

VAT RETURNS CIS RETURNS

SELF-ASSESSMENT

GENERAL BOOKKEEPING

Jennifer Sear MICB

Heyshott, Midhurst

T: 07834 765761

E: athenabookkeeping@aol.com



## need help with your pc? Clive Way BA <sup>hons</sup> Computing

The friendly professional service for your  
home pc, laptop and other device nightmares.

I am now based in Wales.  
But fear not –  
I can still help you with  
many problems by  
remotely accessing your pc,  
mac, phone, ipad or other  
electronica.



tel: 0791 7766254

email: cliveway@yahoo.com

## HELEN'S AIRPORT CARS

"With US it can often cost less than rail or airport parking"



Saloons  
MPVs  
Estates  
4 - 8 seaters

Reliable  
Affordable &  
Comfortable  
Pre-booked  
24hr

01243 820820

Book Online Now [www.airporttaxis.co.uk](http://www.airporttaxis.co.uk)

24 Sudley Road, Bognor Regis. PO21 1ER



# Timberscapes

Born out of a family of gardeners  
and skilled craftsman

- ⊗ All hard landscaping, garden clearance
- ⊗ Site/garden clearance
- ⊗ Ground works & site levelling
- ⊗ Garden walls & raised planting beds
- ⊗ Paving, decking, wooden structures
- ⊗ Fencing and edging

**07913 118780**

**greg@timberscapes.co.uk**

## Jane Bellinger

Professional Cordon Bleu Chef

Dinner Parties Luncheons

Weddings Canapes

Picnics Buffets

Afternoon Teas Desserts

info@janebellinger.com

www.janebellinger.com

St. Anne's Cottage, The Street,

Bury, RH20 1PA

Tel 01798 839433

## Success

No greater gift



## Maths tutoring

11+, 13+, Scholarship, GCSE, A Level, IB, Pre-U

www.escry.com

simon.mitchell@escry.com 07850 125 519

**CARPET & RUG DRY CLEANING**  
**UPHOLSTERY & CURTAIN CLEANING**  
**STAIN PROTECTION**

**TEL: 01730 814 965**

www.magnadrysouthern.co.uk



MAGNA DRY SOUTHERN

**Free Estimates ~ Fully Insured**

## Matt Wheatley

### Local electrician

Part P approved contractor

*Fully insured*

For prompt and friendly  
service, please call

**07976 465974**

or email

**mattwheatley1971@btinternet.com**



SERENA COOPER

PHYSIOTHERAPY

SPECIALIST MSK PHYSIOTHERAPIST  
MSC, HCPC, MCSP

Friday Physiotherapy Clinic  
Grafham

Low back pain/ sciatica

Neck pain

Joint pain

Muscular aches and strains

Sporting/ligament injuries

Chronic pain

Home visits available

For more information please get in touch on:

0788-4445985

serenacooper.physiotherapy@outlook.com



### Graffham Based Taxi Service

**PRE-BOOKED LONG DISTANCE JOURNEYS**



• PLEASE CALL, TEXT OR EMAIL FOR A QUOTE.  
• 24 HOUR SERVICE AVAILABLE BY PRIOR ARRANGEMENT.

**07467 521 760**

[pescadorashire.co.uk](http://pescadorashire.co.uk)  
[pescadorasprivatehire@gmail.com](mailto:pescadorasprivatehire@gmail.com)



Prompt and Friendly  
Telephone Fran or Dean on

**07768 986 338**

Based in Lickfold  
Est. 1990

[prismwindowcleaningltd.com](http://prismwindowcleaningltd.com)



### Roger Poat & Partners Funeral Directors & Monumental Masonry Consultants

Duck Lane, Midhurst, West Sussex GU29 9DE  
**Telephone 01730 812094**  
(24 Hours)

- Pre-need Funeral Plans
- Private Chapel

**Email: [info@rogerpoat.co.uk](mailto:info@rogerpoat.co.uk)**  
Michael Miller & Partners Ltd

### SMART CARS

#### PRIVATE HIRE / TAXI SERVICE

Executive Saloon and Chauffeuring Service

Professional, Personal, Reliable

Same Day Courier Parcel Service

For quotes and bookings call Dominic

**07823 559099**

email: [smartcars@tiscali.co.uk](mailto:smartcars@tiscali.co.uk)

Card payments accepted

*Established Midhurst 2006*



**THE MARTIN SEWELL  
BUILDING COMPANY**

An award-winning Chartered Building Company that has worked in the Sussex area since 1985, gaining a well-deserved reputation for professionalism, reliability, high quality craftsmanship & project management skills.

Experienced in all types of building projects, from large commercial to the sensitive renovation of listed buildings, bespoke new-builds or extensions & refurbishments.

Telephone 01243 542056  
Email [martin@msbc.co.uk](mailto:martin@msbc.co.uk)  
[www.msbc.co.uk](http://www.msbc.co.uk)



### SUSSEX LAND WORKS

Ground Work, Driveways, Patios, Paving,  
Drainage, Concreting, Tarmacing,  
Water Pipe Repairs and Installation  
and more

[info@sussexlandworks.co.uk](mailto:info@sussexlandworks.co.uk)

01730 814751      07950 035997

[www.sussexlandworks.co.uk](http://www.sussexlandworks.co.uk)

# Directory: Useful local contact info

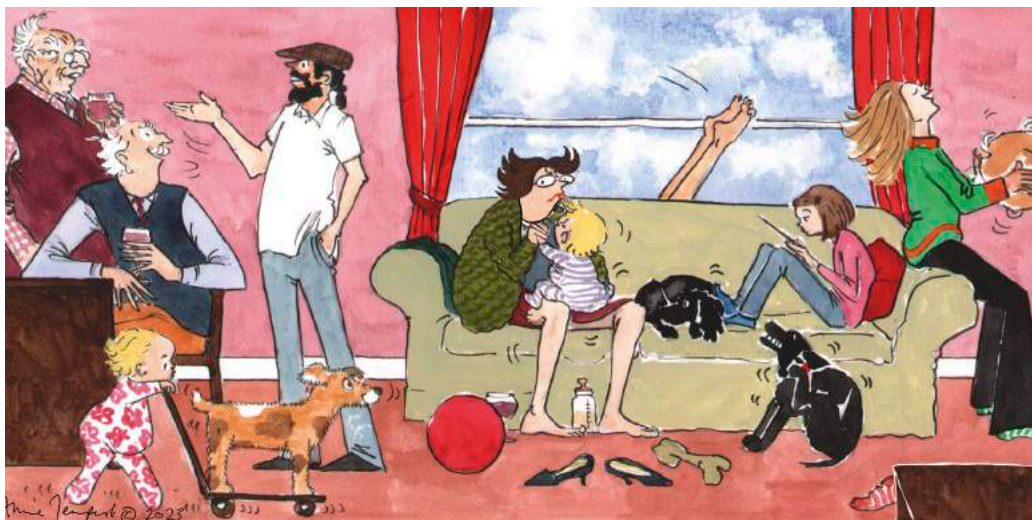
<b>DOCTORS</b>	<p>Petworth Surgery 01798 342248</p> <p>Midhurst Riverbank Medical Centre 01730 812121</p> <p>Haslemere Minor Injuries Unit 01483 782334</p>
<b>DEFIBRILLATOR</b>	On wall outside Empire Hall Code is <b>C240Z</b>
<b>FLOOD ALERT for Lods Bridge</b>	To check river level <a href="http://bit.ly/lodsbridge">bit.ly/lodsbridge</a>
<b>POLICE</b>	<p>In emergency 999</p> <p>Non-emergency 101@sussex.pnn.police.uk 101</p>
<b>BURST WATER MAINS</b>	Southern Water 0800 820 999
<b>POWER CUTS</b>	Scottish & Southern Electric 0800 0727 282
<b>99 FLEX BUS</b>	<p>Linking Graffham with 01243 858854</p> <p>Chichester, Petworth etc <a href="http://bit.ly/99flexbus">bit.ly/99flexbus</a></p>
<b>All Saints Chapel Trust</b>	Chairman Clive Rowntree 01798 867536
<b>Badminton</b>	Louisa Thomas <a href="mailto:louisa9000@hotmail.co.uk">louisa9000@hotmail.co.uk</a>
<b>Bees / Swarms</b>	
Wisboro' Green B'keepers	Tom Moore 07984 606214/01798 343470
Local beekeeper	Murray West evenings 01798 867048
<b>Chichester District Council</b>	01243 534734
District Councillor	John Cross <a href="mailto:jcross@chichester.gov.uk">jcross@chichester.gov.uk</a>
	07592 307027
Dog Warden	Office hours 01243 534734
	Emergency 01243 785339
<b>Citizens Advice Bureau</b>	03448 487969
<b>East Lavington Parish Council</b>	<p>Chairman Charles Britton <a href="mailto:charles.britton@eastlavington-pc.uk">charles.britton@eastlavington-pc.uk</a></p> <p>Clerk Amy Harte 07889 979820</p> <p><a href="mailto:eastlavingtonpc@gmail.com">eastlavingtonpc@gmail.com</a></p>
<b>Empire Hall</b>	<p><a href="http://empirehall.org.uk">empirehall.org.uk</a> <a href="mailto:empirehall@gmail.com">empirehall@gmail.com</a></p> <p>Chairman and Bookings Sally Blunt <a href="mailto:bookings.empirehall@gmail.com">bookings.empirehall@gmail.com</a></p> <p>Treasurer Carole Sargent 01798 344790</p> <p>Maintenance Gillian Charlesworth <a href="mailto:empirehall@gmail.com">empirehall@gmail.com</a></p>
<b>Empire Lunch Club</b>	Sarah Lydiard-Wilson 01798 867567
<b>Foodbank</b>	<a href="mailto:info@chichester.foodbank.org.uk">info@chichester.foodbank.org.uk</a> 01243 773687
<b>Foresters Arms</b>	<a href="http://forestersarms-pub.co.uk">forestersarms-pub.co.uk</a> 01798 867386
<b>Graffham Archive</b>	Robin Brind <a href="mailto:graffhamarchive@outlook.com">graffhamarchive@outlook.com</a> 01798 867619
<b>Graffham Bellringers</b>	Tower Captain Howard Pescott 01798 867029
<b>Graffham Bowls Club</b>	<p>Chairman Sheila Allen 01798 342869</p> <p>Secretary Liz Pegram 01798 867770</p>
<b>Graffham Cricket Club</b>	Bill Barrett 01798 867113
<b>Graffham Down Trust</b>	Chairman Jim Kirke 01798 867026
<b>Graffham Garden Group</b>	Carole Kirke 01798 867026
<b>Graff'm Health Support Assc</b>	<p>Chairman Sarah Lydiard-Wilson 01798 867567</p> <p>Membership Tracy Rowe 07881 698993</p> <p>Transport 07391 802541</p> <p>Prescription collection Ann Rowney <a href="mailto:ann.rowney@icloud.com">ann.rowney@icloud.com</a></p> <p>Loan of equipment Karin Skanberg 07920 091014</p>

<b>Graffham Lunch Club</b>		Sarah Lydiard-Wilson	01798 867567
<b>Graffham Nursery</b>		School Office	01798 867324
<b>Graffham Parish Council</b>	Chairman	Roger Coakes	roger.coakes@grafttham-pc.uk
	Clerk	Caroline Davison	clerk@grafttham-pc.uk
<b>Graffham Parish News</b>	Editorial and circulation:		editor.graftthamparishnews@gmail.com
	Advertising:		ads.graftthamparishnews@gmail.com
	See also bottom of inside front cover		
<b>Graffham with Woolavington Parochial Church Council</b>		stgilesgrafttham.org	
	Priest-in-Charge	Rev Vivien Turner	01798 867199
		hallo@stgilesgrafttham.org	
	Churchwardens	Ginny Barrett	01798 867113
		Cindy Bradley	07787 516522
	Acting Treasurer	Ginny Barrett	graftthampctreasurer@gmail.com
<b>Graffham Rec Committee</b>	Chairman	John Bracey	01798 867760
	Treasurer	Bernard Bayly	01798 867042
	Bookings Sec	Sonya Gillespie	graftthamrecpavilion@gmail.com
<b>Graffham Tennis Club</b>	Chairman	Simon Longman	01798 867317
	Membership	Richard Gyles	01798 867484
	Coaching	Emma Amin	01798 867063
<b>Graffham Village Shop</b>		Jeeva and Vasu	01798 867700
		graftthamvillageshop.co.uk	
<b>Graffham Vill'ge Shop Assoc</b>	Chairman	Steve Dover	07770 499223
	Treasurer	Andy Paterson	andyp1692@gmail.com
	Secretary	Neil McLean	neil.mclean@brookorchard.com
			07971 142252
<b>Katherine Maud Guillod Fund</b>		c/o Grafftham PC Clerk	graftthampc@gmx.co.uk
<b>Lavington Estate</b>		info@lavingtonstud.co.uk	01798 867275
<b>Lavington Park Federation</b>		graftthamanddunton.w-sussex.sch.uk	
	Grafftham CE Infant School		01798 867324
	Dunton CE Junior School		01798 342402
	Friends of Grafftham & Dunton Schools		01798 867324
<b>Long Bostle Downland Soc</b>		Gillian Brandt	01798 867276
<b>MP Arundel &amp; South Downs</b>		Andrew Griffith	andrew.griffith.mp@parliament.uk
<b>Midhurst &amp; Petworth Observer</b>		Nikki Jeffery	01243 534163
<b>National Trust (Lavington Common)</b>			01730 816638
<b>Neighbourhood Watch</b>		Michael Crickmay	01798 867486
<b>Osteopath</b>		Anna Shawcross	01798 867523
<b>Oil Buying Syndicate</b>		Derek Bradnum	derekbradnum@gmail.com
<b>Petworth Food Bank</b>			07501 921617
<b>Pilates at Empire Hall</b>		Nicky Capes	07990 517858
<b>Seaford College</b>			01798 867392
<b>Three Moles</b>		Ollie and Tom	thethreemoles.com 01798 861303
<b>Thursday Club</b>	Secretary	Diane Bellis	01798 867444
<b>West Sussex County Council</b>		General enquiries	01243 777100
	County Councillor	Tom Richardson	07463 785039
<b>White Horse</b>		whitehorsegrafttham.com	01798 867331
<b>Yoga at Empire Hall</b>		Deborah Albon	07790 867009



# JACKSON-STOPS

PROPERTY EXPERTS SINCE 1910



“Seems like it was only five minutes ago this place felt as spacious as a palace.”

**Downsizing, Upsizing, Extending?**

If you are considering the sale of your property or need good advice, we would love to hear from you.

**Please get in touch with our team in  
Midhurst to find out more**

01730 812357    [midhurst@jackson-stops.co.uk](mailto:midhurst@jackson-stops.co.uk)  
Market Square, Midhurst, West Sussex, GU29 9NJ