

GRAFFHAM PARISH NEWS

ISSUE 404

FREE

OCTOBER 2024



Thirsty work as crowds soak up fête
What's on at our Empire Hall this winter
There's something in the air around here



Graffham Parish News is published and distributed free each month to every household in Graffham and East Lavington by the Parish of Graffham with Woolavington.



Please support us If you enjoy reading this magazine, then please make a contribution towards its costs through a monthly or one-off online donation – just point your phone camera at this QR code or go to bit.ly/GPN-donation



Archives Back copies can be viewed online at bit.ly/stgarchive1

Subscriptions If you live outside the parish, you can receive copies by mail by taking out an annual subscription for £36. Contact the editors for full details.

Advertising We love our advertisers! If you are interested in being one of them, please contact Philippa Sanders (below) or email ads.graffhamparishnews@gmail.com

Copyright All content is © *Graffham Parish News* unless otherwise stated and may not be reproduced without the editor's written consent.

On the cover: Crowds flocked to the Rec on August Bank Holiday Monday, making 2024's Graffham Fete one of the best attended for years – and keeping Richard Gyles, Beetle Clay, Miles Amin and Ian Thornley on their toes at the beer tent! For more pictures and a full report, see pages 18-22.

Contributions and contacts We're always pleased to hear from you at editor.graffhamparishnews@gmail.com

- Michael Blunt (left) 07711 997487
- Bill Barrett (right) 07443 501091
- Philippa Sanders 07853 921825



Deadline for November edition
10 October.

Printed by Parish Magazine Printing, Holsworthy, Devon EX22 6TD.



Writing from the Rectory: Baggy trousers

We hardly seem to have had any summer this year and it's cloudy, cold and wet outside as I write in early September with the prospect of winter ahead. For that reason, and because of two clothes-related occasions last month, I'm musing in this letter on fashion.

The first occasion was when we took our grandchildren to the Weald and Downland Museum in nearby Singleton and watched a demonstration of Tudor clothing being put on, from the underwear upwards. Everything worn was designed to be practical, and to impress if you could, church being one significant place in those days where people sought to achieve both outcomes.

The second occasion was a demonstration of our pew cushion heating at St Giles to visitors from Ockham in Guildford Diocese. Some were delighted by it. One person said the middle part of their body felt warmed, though not their head or their feet. Another person asked if I felt cold in church, being the service leader without the opportunity to sit and warm myself in this way (answer provided below).

These interesting demonstrations made me question how we dress to impress or be practical today, in a present-day context of concern for climate change, being encouraged as we are to find alternatives to fossil fuels to warm ourselves. And, most importantly for myself in my role, how do we do this considerately in church throughout the winter months, when it takes hours before services to warm the barn-like church with oil-fired central heating?

It made me wonder, could we learn something from clothes worn in earlier days like Tudor times, when central heating was unknown? It was all natural fibres then, of course – wools and linens, lots of layers of clothing, shifts, kirtles and robes reaching down to the ground, baggy breeches, voluminous robes, and layers of



Volunteers at the Weald and Downland Museum demonstrate how Tudors dressed to impress – and stay warm when the weather turned chilly!

▶ [Continued on next page](#)

▶ *Continued from previous page*

headgear with caps and hats as well. The layering and the bagginess and the full-length clothing and the head coverings all contributed individually to retaining heat effectively. What would our clothes look like if we prioritised these features in wintertime today? Where is the fashion designer to make us feel these features are not just practical but acceptable, even desirable? Because that seems to be key to people being willing to wear what they do.

Rev Vivien is no Vivienne Westwood, unfortunately. I'm flagging up, however, that if we wear hats in church, if our clothing is more layered and looser and longer, if 'baggy trousers' are not 'madness' for us, then we will be warmer (and the planet will be cooler) than if we don't.

I testify to this as someone for whom it is perfectly acceptable to wear long loose garments in church, like alb and chasuble, cassock and surplice. Actively experiencing the benefit of their retaining warmth means the answer to 'Do I feel cold in church?' is an emphatic, no!

I encourage everyone to come to church this winter (whatever you decide to wear). We will keep you warm with the means at our disposal. If you can be both practical and impress by emulating the clothing inspirations of earlier centuries that both help us and keep you warmest, all the better!

Every blessing!



Reverend Vivien

	Priest in charge: Reverend Vivien Turner hello@stgilesgraffham.org 01798 867199
	Churchwardens: Ginny Barrett 01798 867113 Cindy Bradley 07787 516522
	Safeguarding Officer: Howard Pescott 01798 867029 safeguardinggraffham@gmail.com
	 stgilesgraffham.org  @stgilesgraffham



Stride raises funds for historic churches – and ours

Almost a dozen parishioners took part in this year’s Graffham sponsored walk in beautiful weather on Saturday 14 September as part of Historic Churches Trust, which generously donated £5,000 towards St Giles’ recently completed roof repairs. Our group raised several hundred pounds, to be split between the trust and St Giles.

Starting from All Saints Chapel, opposite Graffham Village

▶ [Continued on next page](#)



After leaving Graffham’s All Saints Chapel at 8am (left) the group had grown in numbers by the time it reached Amberley’s St Michael’s Church.

▶ [Continued from previous page](#)

Shop, at 8am, they visited ten other churches before reaching their destination, Amberley Tea Rooms, 22 km (13.5 miles) away in mid afternoon where drivers were waiting to bring them back home – after cake and a cuppa. Their numbers were swelled along the way by those who were unable to walk the entire length.

Stops along the way included our own St Giles Church, St Peter's Chapel at Seaford College, Duncton's Holy Trinity, St Anthony and St George's, Burton Park's tiny St Richard's, Barlavington's St Mary's, Sutton's St John the Baptist's, Bignor's Holy Cross, Bury's St John the Evangelist and Amberley's St Michael's.

If you would like to swell the walkers' sponsorship coffers, contact the Rev Vivien, or go to St Giles' regular giving page at stgilesgraffham.org/giving

The past two parish walks have been from St Giles to Chichester Cathedral, while the previous one took the form of a 'beating the bounds' tracing the boundary of Graffham with Woolavington parish.



Paws for thought: One of Beanie Bradley's polo ponies, Betty, was the biggest creature to make an appearance in St Giles' Church for its annual animal blessing service, on Sunday 15 September. The regular congregation of humans was also swelled by a fair number of pet dogs.

Bumper GCSE results at Rother and Seaford

Students at Midhurst Rother and Seaford Colleges have been celebrating bumper sets of GCSE results, following the A level successes notched up at both schools earlier in the summer. East Lavington's private school – which began its new academic year last month with more pupils than ever before, including a record Sixth Form intake – claimed its best yet 9-7 Grades collectively across its curriculum in publicly sat exams. At the state school covering our area, 63% achieved Grade 4 or above in both English and Maths, while 43% achieved Grade 5 or above in the two subjects.

Merger of civil parishes on ice for now?

The potential for a merger of the civil parishes of Graffham and East Lavington appears to be off the cards for the immediate future with insufficient enthusiasm for the move among councillors of both parish councils.

At their meeting on Wednesday 4 September, Graffham Parish Council agreed to investigate further the logistic, desire and cost of combining with its neighbour and keep it as a rolling item on its agenda going forward. Meeting on Monday 16 September, their East Lavington counterparts felt it was inappropriate for their council to undertake any preliminary investigation into the potential for combining unless a formal proposal was put to them by their Graffham neighbour.

At their previous meetings, some members of both councils had suggested that merging the two could result in long-term financial savings and other benefits.

Bring-and-share lunch to mark harvest time

Graffham's annual Harvest Lunch will be held on Sunday 6 October from 12.30pm at the Empire Hall – a wonderful way for villagers to enjoy each other's company in a traditional way. All are welcome and there's no need to book. Like last year it will be a bring-and-share meal so take along whatever is your favourite dish – savoury or sweet – to share with your fellow villagers, but please note that the ovens at the Empire Hall won't be available. Take along also any drinks you'd like – again, sharing is encouraged. Organiser Marie Bracey said: "It's amazing how it all works out with more than enough delicious delights to keep everyone happy! We would like especially to welcome as many families as possible." There will be children's activities to keep the young ones amused and happy. Those attending will be invited to make a donation – with a small amount given to the Empire Hall to cover its hire costs but the bulk given to Petworth Foodbank.



Also, as usual, parishioners are invited to donate food and other household consumables for the needy at the Harvest Festival Service at St Giles at 10.30 am that same day. Any items given will be combined with donations collected by Graffham Infant School to be given to our local homeless charity Stonepillow. All tinned or packaged food and toiletries are welcome. For more specifics, see stonepillow.org.uk/how-to-help/donate-food/

Work progresses on Rec's new playground

Work was continuing as this edition of *Graffham Parish News* went to press on upgrading the playground at the village's recreation ground. The old equipment had been dismantled and cleared away, groundworks all but completed and a new fence erected to replace the old one that had been taken down. Woodchip was due to be laid on the ground, ready for the new and renovated equipment to be installed, which is on track for next month or so.

Priority now is on further fund raising, to enable the space to be filled with more goodies. Crowdfunding continues (see panel) and the project team is stepping on the gas once again in a bid to win grants. The new play space is being designed to cater for children of all ages and is being sustainably sourced using natural materials. Elsted-based Playsafe has been selected as the provider and will maintain the equipment, too.

You can still contribute towards the new playground via its page by scanning this QR code (right) with your Smartphone camera. Alternatively, type gofund.me/546c06a7 in your web browser. As a charity, the project is eligible for Gift Aid, which adds 25 per cent to everything you donate – so please add this if you are a UK taxpayer. Any funds collected beyond the initial target will go towards more equipment for the playground and its on-going maintenance.



After years of being a pipedream, work on the upgrade got underway in mid-August after a 'donation in kind' by Glen and Asta Manchester, in the form of the loan of members of the workforce rebuilding their new home at

Selham House to carry out the ground works. That significantly bolstered Graffham Parish Council's £20,000 pledge from its Community Investment Levy fund towards the initial project target total of £50,000. Topping that up have been generous financial gifts from individuals – plus £1,000 from Graffham Festival.

Rachel Gerrett, of the project team, said: "It's been very exciting to see work finally getting underway after so many people have worked so hard for so long on the project. Huge thanks to Mr and Mrs Manchester and everyone who has helped."

Thursday Club to collect subs at its AGM

Thursday Club holds its annual general meeting in the Empire Hall on Thursday 10 October at 2.30 pm, when yearly subs will also be collected.



*Do you have
apples to spare?*








*Why not make an apple crumble for our
local homeless charity, Stonepillow?*

Crumblethon 2024



Your crumbles must:

-  Be freshly cooked, and not pre-frozen, so they can be delivered straight to Stonepillow for freezing.
-  Contain NO nuts.
-  Be in the foil containers which fit in the charity's freezers – you can get one (or more!) from Ann Brown on 01798 867561 at Frederick House, Jan Brind on 01798 867619 at Occam Cottage or St Giles Church from 6 October.
-  Have their container lids placed silver side down, with the crumble's contents written on the lid if they are not just apple – pear crumbles, or apple with blackberries, are OK.
-  Be delivered to Ann Brown at Frederick House on Monday 14 October.

MANY THANKS!



NESTLED IN THE HEART OF THE SOUTH DOWNS

T: +44 (0)1798 867331
E: INFO@WHITEHORSEGRAFFHAM.COM
W: WWW.WHITEHORSEGRAFFHAM.COM
@WHITEHORSEGRAFFHAM

White lines make locals see red

White lines painted on the sides of the newly resurfaced road along the stretch of Popple Hill from close to Graffham Village Shop towards the Norwood Lane triangle have been one of the most controversial developments in the community for years, judging from the comments posted on Facebook's Graffham Noticeboard. In little more than 24 hours following the posting of a picture of them on 2 September, immediately after they had been applied by West Sussex County Council's Highways team, almost 50 comments were added.

While the majority were negative, some liked the lines. Views were mixed on whether they would encourage or discourage more speeding along that stretch of road. Others described the addition to the roadscape as a waste of council taxpayers' funds.

West Sussex county councillor Tom Richardson joined the online discussion: "Highways have said there are currently no further works planned for white lining on the lanes around here, and have agreed



to consult the parish councils over any similar works in the future. I wasn't aware any works were planned or I would have asked for it to be stopped before. I think it is a complete waste of time and money, unnecessary and spoils the country lanes."

At a meeting of Graffham Parish Council on 11 September, half the councillors voted to ask West Sussex Highways to burn the white lines off while the other half felt doing so would be a further waste of council money and recognised that bright white of the lines would tone down with wear and dirt. Members of East Lavington Parish Council agreed that removing them would just further waste funds.

Keep chickens in your garden? Then register!

Residents in Graffham – and throughout Britain – who keep chickens or other birds in their gardens or small holdings are being reminded that they had until 1 October to register with the government's Animal and Plant Health Agency – or they'd be

▶ [Continued on next page](#)

▶ *Continued from previous page*

breaking the law. Previously, the requirement applied only to those keeping 50 or more birds, but following the bird flu outbreaks of recent years that has been revised requiring the keepers of even just one to register. Only birds that are kept in indoors cages – like budgerigars, parrots, or canaries – are exempt. The government says the change means anyone keeping birds in their backyards will receive important updates relevant to them, such as local avian disease outbreaks and information on biosecurity rules to help protect their birds.

To register your garden chickens or other poultry or birds or for more information, go online to bit.ly/poultry-register

Now's the time to trim your hedges and verges

Graffham residents are being reminded that now is the time to trim your hedges and road verges. Graffham Parish Councillor for Highways, Byways and Environment Colin Barker says: “All restrictions on hedge maintenance due to nesting birds are now lifted – so this is the perfect time to swing into action because then our roads will be neat and clear for the whole of the winter.” Most hedges and verges alongside roads belong to the adjacent landowner – not the council. Local councils only have jurisdiction for one metre of the verge – and that is solely for the purpose of positioning and maintaining their highway furniture.

Colin adds: “With West Sussex County Council so short of funds, they are not able to send crews out to carry out this work – so we really must take responsibility ourselves for our own land.”

All householders and landowners are responsible for keeping roads and pavements safe for vehicles, cyclists and horse riders, by cutting back overhanging vegetation on their property – it's law under the Highways Act. Vegetation should be cut back to give a minimum clearance of 0.5 metres (1ft 8ins) to the edge of the road and, if there is any vegetation overhanging the road, to a minimum height of 5.2 metres (17 ft) above the road.

If you can't do the work yourself then you should contact a reputable local contractor to do it for you. If you do the work yourself, ensure you use warning signs on all approaches, work at off-peak times and in daylight, and keep debris out of traffic's way, and remove it from the road, verge and drains.

Also, if you are thinking about removing a hedge completely, then check first with South Downs National Park and/or Chichester District Council, as many hedges have protected status, prohibiting their removal.

Top authors to visit Petworth for literary festival

Some of the biggest names in the literary world will be visiting Petworth this month to deliver talks as part of Petworth Literary Week, from 23 October – including Judi Dench, Robert Harris, Pam Ayres, Kate Mosse, Clare Balding, John Suchet, David Baddiel, Simon Heffer, Polly Toynbee, Helen Lederer, Tony Hawks, Adrian Chiles and Phil Manzanera.



Petworth Festival is also staging three musical evenings in Petworth House’s state rooms this month, featuring a sequence of mini-concerts by final-year students of the Royal Academy of Music. The events promenade between the Carved Room, North Gallery, Chapel and Grand Staircase, on Friday to Sunday, 18 to 20 October.

To book or find out more about the literary week and concerts, go to www.petworthfestival.org.uk/whats-on

New man to head South Downs National Park

Siôn McGeever (right) is to become the new Chief Executive of the South Downs National Park Authority from the end of November, after “a rigorous selection process”. He succeeds Trevor Beattie, who retired on 1 January after leading the national park since its creation 12 years ago. The post has been held on an interim basis since then by the authority’s Director of Planning and Development Tim Slaney. Siôn has 25 years of experience of working in environmental policy, international development and business, most recently leading the team responsible for policy and funding for all of England’s protected landscapes as Deputy Director for Access, Landscapes, Peatlands and Soil at the Department for Environment, Food and Rural Affairs (DEFRA).



Married with two teenagers, he has lived in the South East for the past nine years after returning from Tanzania, where he was posted with the UK Department of International Development. After graduating from Cambridge and completing an MA at the University of Sussex, he worked with food group Nestle in the UK, Australia and the Pacific. He has a lifelong love of the outdoors, is a keen outdoor swimmer and enjoys photographing wildlife and landscapes.

New Tangletrees plan aims to address objections

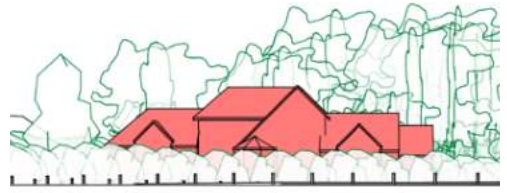
Fresh proposals have been submitted to South Downs National Park and Chichester District Council planners for the replacement of Tangletrees, directly overlooking Graffham Rec, after the original application was refused in December.

Owners Ian and Julia Forrest are now asking for permission to build a smaller house than previously proposed, but still slightly more than 50 per cent bigger than the current one. By swapping parcels of land designated for residential and agricultural use, its footprint would be turned by some 90 degrees from how it was originally envisaged and set back further from the sports field, where the ground level is lower, so reducing its size as seen from the south and with its height appearing below that of the current building.

It would take the form of two barn-style units, one single-storey, the other two storeys, connected by a central entrance way. They would be clad in local stone, with red brick detailing, and in black wood weatherboard. The roof would be covered in handmade red tiles. If approved, the development would come with a host of eco credentials to minimise its impact on the environment.

Repositioning the house on the plot would also result in widening the wildlife corridor running from the small copse in the north east corner of the Rec to the ancient woodland to the north of the development site. To prevent deer from crossing from that into the garden, the plans feature a ha-ha, constructed using waste from the demolition of the existing building and from digging the new foundations and pond, thereby reducing the amount of traffic associated with the development that would otherwise have to pass through the village. The landscaping plans also include a new wildlife pond to the north west and the planting of trees, an orchard and hedgerows.

This latest proposal is designed to address the objections to the original plan, which the authorities declared would “materially increase the visibility and prominence of the buildings in the wider landscape resulting in a visually intrusive and discordant form of development”. It is also intended to bring it into line with pre-application advice from the planning officers, who said they had no objections to demolishing the existing building, supported the proposed architectural approach for its replacement and considered the proposal “to provide the opportunity for the provision of a well-designed, landscape-led replacement dwelling of modern construction and sustainability credentials to integrate fully with, respect and sympathetically complement the landscape character in this area of Graffham”.



Architect's drawings showing how the proposed new Tangletrees (left) with its new planting would look from Graffham Rec, against the current building (right).

They noted, though, that its gross internal area should be no more than around 30 per cent bigger than the existing house and further consideration needed to be given to its exact siting on the plot.

The new application, however, continues to vex East Lavington and Graffham Parish Councils, which both opposed the original proposal. At a meeting of Graffham Parish Council on 11 September, six members of the public spoke in opposition to the development. Councillors resolved to advise the Chichester District and South Downs planners, who will rule on the application, of their concerns over the proposed new building's size, impact on the local water table, drainage and wildlife, light emanating from it at night time, the potential precedent set by the land swap and, if approval is given, on the potential damage caused by heavy construction vehicles to the lane between the war memorial and the Rec. It was the size of the proposed replacement in particular that resulted in East Lavington Parish Council recommending its rejection, at its meeting on 16 September.

Applicant Ian Forrest said: "We've listened carefully to what the planning authorities and the wider community said about our original proposal and have aimed to address the concerns they raised. Our revised plans result in a dwelling that appears significantly smaller and less imposing on the landscape, particularly when viewed from the Rec, and remains private and well hidden from all of the immediate neighbours along The Street. We are hoping that such an approach will now meet with support. We appreciate what a special site Tangletrees is for the neighbourhood and have worked hard with our architects and advisers to create a design that hopefully will be a real credit to the village."

Norwood Lane holiday let proposal turned down A bid to convert a redundant agricultural building into a holiday let at Little Bury, Norwood Lane, East Lavington, has been blocked by South Downs National Park and Chichester District Council planners.



Simply
Windows
& Doors

We supply and install:

- » uPVC, aluminium and composite windows and doors
- » aluminium bi-fold doors
- » aluminium slide and swing doors



BB

A fantastic product, expertly fitted and the whole project was finished with great care.

Mrs W, Midhurst



GET IN TOUCH » call 01730 601340 / 07454 660770
info@simplydoorssouthern.co.uk / simplydoorssouthern.co.uk

Plans for swimming pool and gym at Eastwood Farm approved South Downs National Park and Chichester District Council planners have given the go ahead for the demolition of various existing outbuildings and erection of gym and garden store along with the construction of an outdoor swimming pool at Eastwood Farm, Graffham Road, East Lavington.

Planning applications for Graffham and East Lavington filed with the South Downs National Park as we went to press (for details, see bit.ly/sdnp-planning):

Tangletrees, Opposite the Rec, Graffham GU28 0QA: Replacement dwelling, ancillary building and associated landscaping including ha-ha and pond. SDNP/24/03091/FUL. Received 29 July.

Oakfield, The Street, Graffham GU28 0QA: Loft conversion including dormer windows to the southern and northern roofs. SDNP/24/03355/HOUS. Received 9 August.

Bishops Hill, The Street, Graffham GU28 0QA: Alterations and additions to existing house, inclusion of new swimming pool, car port, solar panels and air source heat pumps. SDNP/24/03520/HOUS. Received: 22 Aug 2024

Down House, The Street, Graffham GU28 0QA: Variation of permission SDNP/23/03780/HOUS to extend the approved extension out over the existing well and changing the design of roof over the extension. SDNP/24/03503/CND Received: 21 Aug 2024

Property watch

Homes for sale locally, posted at [rightmove.com](https://www.rightmove.com) since our previous edition:



East Wing, Lodsworth House, Lodsworth GU28 9BY: Grade II listed house with five bedrooms, three bathrooms, three reception rooms. 397 square metres (4,275 sq ft) excluding cellars. 5.25 acres grounds with swimming pool and tennis court. Guide price £2.95 million. *Knight Frank, Haslemere, 01428 771287. Listed 11 September.*

Old Post Office, Tillington GU29 9AF: Detached house with five bedrooms, four bathrooms, three reception rooms. Total interior floor area of 223 sq m (2,398 sq ft). Garage/workshop, carport, shed, gardens, parking Guide price £1.195 million. *Jackson-Stops, Midhurst 01730 774837. Listed 11 September.*



Police and crime watch

Sussex Police's log of incidents locally in recent weeks. If you have any information which might help, please report it.



'Lock up' warning after local break-ins The passenger window of Sinead Hunter's car was smashed while it was parked in a car park off New Road, Ambersham, in the middle of the day on Monday 17 September, and the interior ransacked with her handbag, which had been hidden under the driver's

seat, stolen. Earlier that same day, a window of a car parked in Dukes Road car park, Slindon, was also smashed and a child's rucksack stolen. Several other incidents were also reported by Sussex Police of vehicles being broken into and number plates stolen.

Sussex Police reported "several" burglaries and attempted burglaries as well across its Chichester district, which includes Graffham, in its latest monthly round-up. Windows and doors at the back of properties had been accessed, and sheds and garages broken into.

A police spokesman reminded all householders to protect their homes when away and to secure windows and doors if going outside in the garden, and not to leave valuables in unattended vehicles.

Appeal for witnesses to fatal accident at Coultershaw. Police are appealing for witnesses to a fatal collision on the A285 close to Coultershaw Bridge on Thursday 22 August at around 7.20pm. The 28-year-old male driver of a blue Toyota RAV4 died at the scene after his car collided with a tractor pulling a trailer. The tractor driver was not injured. Station Road was closed between Kilsham and Rotherbridge Lanes until the following afternoon. Anyone with information about the accident is asked to contact Sussex Police via collision.appeal@sussex.police.uk quoting Operation Fogerty.

Need a helping hand...? Graffham with Woolavington's Parish Priest Discretionary Fund is available to help any parishioner in real financial need. Funded by donations to St Giles, it's already come to the rescue of multiple individuals and families in the village hit by the cost of living crisis. Stretched to pay for something essential? Struggling to pay for your child's school extras? No cash for urgently needed groceries? It could be the answer to your prayers. Contact Rev Vivien to find out more.

From Town Hall: Help keep this treasure here

Our representative on Chichester District Council, John Cross, provides his regular update on his key issues of focus right now.



Two years ago, a rare Anglo-Saxon gold and garnet pyramidal mount, dating to around AD600, was found by a metal detectorist near Stopham, just 15 minutes from Graffham and in the same Fittleworth ward. The Novium Museum in Chichester is hoping to raise the funds required to buy this local treasure, keeping it within our district and ensuring its accessibility free-of-charge for the wider community to appreciate for generations to come. If these funds cannot be raised, the Stopham mount will be offered to the British Museum – but if it declines to buy it then there is a real possibility this important find could be sold privately, which would be a tragic loss for our local heritage – it would not be publicly accessible or possibly even remain locally.

The mount, which measures 16.14 mm in height, was likely attached to a strap which helped secure a sword to the scabbard. It has a square base with rounded corners, and four main triangular faces forming a flat top. Each side is decorated with an almost identical intricate design of gold cells set with plate and bar garnets mounted over waffle stamped gold foils. Only one other incomplete example of its type has previously been found in West Sussex. Other pyramidal mounts have been unearthed nationally, notably the Sutton Hoo and Staffordshire Hoard assemblages, but this example is complex due to the animal heads represented on the sides of the piece.



Thanks to a V&A Purchase Grant and kind donation from the landowner, we're just one step away from acquiring this unique piece of local history for the Novium Museum – but it needs help to raise the remaining funds. Even the smallest donation will help secure this magnificent piece for us locally. If you'd like to help, go to www.thenovium.org/stophamtreasure

John Cross will be holding councillor surgeries at Graffham Village Shop on Friday 4 October from 10am and at Bury Village Hall on Saturday 5 October from 11am for local residents to raise any issue they want with him - no bookings needed, just turn up.



As these two shots taken by David Sparkes from his drone show, August Bank Holiday Monday's Graffham fête was one of the best attended for many a year. Can you spot yourself in the crowds?





Nuts! This one missed hitting a coconut – but there were plenty of winners!

Bumper crowds turn out for August holiday's fête

Words:
Bill Barrett

Pictures:
**Michael Blunt
and
David
Sparkes**

Whilst August 2024 will possibly not be remembered as the balmiest, the weather held on Bank Holiday Monday and, ten years after it had to be postponed because of a wash-out, the Graffham Fête entertained, fed and watered the many visitors, local and distant, who came to join in the fun.

John Bracey and David Sparkes masterminded the event and, with Rachel Gerrett, had the inspired idea to apply a bit of 21st Century business nous and recruit a number of “ambassadors” to sponsor the event, at the same time making

▶ [Continued on next page](#)



Crowd puller: Though cloudy for most of the afternoon, the dry and warm weather brought out the hordes by the score.



Classic cars: A fine line up of vintage and classic motors greeted fete-goers on their arrival at the Rec, attracting a goodly number of admirers.

► *Continued from previous page*

use of the barriers protecting the playground renovation to display their banners. As usual the dog show was the central attraction. A post on Facebook's Graffham Noticeboard page suggested it was the tenth year that Bernard Bayley and George Grammer had judged the various classes. Shome mishtake surely? It must be 110 years at least! The hounds that impressed the judges the most (or the owners who displeased them the least) were Frances Bassom and her collie Shadow, from Lurgashall, who also won a few years ago, Christopher Townsend's Benji, from Havant, and Pippin, owned by Benny Rose from Bournemouth who was camping



Top dogs: Best in show winner was Frances Bassom's collie Shadow, from Lurgashall (centre) – who also won a couple of years ago. Runners-up were Christopher Townsend's Benji, from Havant, attending the show with friends from Bognor, and Benny Rose's Pippin, camping locally from their Bournemouth home.



Raffle queens (left) Holly Sabin and Becca Burge and **flower girls** Jo Hail, Nicky West, Gail Paterson and Carol Tompkins at the Garden Group stand.



Tea team: Among those dishing out the cakes and cuppas were Peter and Gillian Charlesworth, Angie Thornley, Jan Brind, Dinah Lamming, Susie Jones and Diane Bellis.



Beer boys: Pouring the pints and opening the bottles were (from right) Ian Thornley, Miles Amin, Beetle Clay and Richard Gyles, while Charlie Major mixed the Pimms.



Barbeque braves: Flipping the burgers, bangers and lamb were Seb Gorbea and Angelina Timofiichuk, with assistance and encouragement from Murray West and Rich Sabin.



Say cheese: Ipe Jacob is clearly concerned about how much weight he'd put on if he'd bought the entire stock offered by Brett Sacks at his Slow Grown Farm stand.

locally. Raffle ticket-flogging duties were performed by Holly Sabin. The top prize of a £100 voucher for Graffham Village Shop (generously donated by Jeeva) was won by Zoe Broadley from, er, Dover, so the friend in Midhurst she was visiting could end up being the principal beneficiary. The second prize of £50 in cash, plus another prize of three bottles donated by Hennings of Petworth, were snaffled by Emma Hutson and family who moved into their new home at Guillods in June. Laurel Roache from Heyshott bagged the bottle of fizz for winning the “Bowling for the Sham” (the erstwhile porcine prize having been replaced by prosecco).

▶ *Continued on next page*



Sunny side up: While the shadows lengthened, the queue for the great Graffham egg toss shortened as competitors were ruled out by failing to keep intact the egg thrown at them. This year's winner of the open class was Louis Higgins.

▶ *Continued from previous page*

Simon Longman's coconut shy, Andy James' "Hole in One" and "Splat the Rat", hosted by Anna and Andy Shawcross, were all heavily subscribed. The ever-popular, Thornley-generated egg toss was won by Louis Higgins, with Pip Bowden victorious in the junior version.

The afternoon's fun and games would not have been possible without Marie Bracey, Gillian Charlesworth, Gay Foord and their team who donated and dispensed the magnificent confectionery and gallons of tea in the pavilion, master-of-ceremonies Michael Blunt, Jude Sennitt for organising the bric-a-brac, Richard Gyles and his team of bartenders, accompanied by Pimmsters Charlotte and Sam Major, Jeeva for supplying the burgers and rolls which enabled Seb Gorbea, Angelina Timofiichuk and Rich Sabin to hit the heights of culinary excellence at the BBQ, Roger Hanauer and Anthony Forsyth for marshalling the car park, William Godman-Dorrington for supplying the hay bales, Seaford College for their gazebos, Rachel Gerrett and Jim Kirke for the media publicity and Hilary Major (who else?) for counting the proceeds. Thanks too to the loyal owners of the vintage cars who turn up every year.

We are indebted to sponsors Jackson-Stops estate agents, Game Set & Match Sports, MacDonald Oates Solicitors, Ghinn & Co building contractors, Westerlands, Serena Cooper Physiotherapy, Boher Architecture and, for their raffle donations, Midhurst Engineering and Pets Corner, Midhurst.

The fête made a profit in excess of £5,000, all of which goes towards running, maintaining and improving the recreation ground and pavilion.

Letters to the editor: The column YOU write

That couldn't have been Gerry Weller driving the tractor while harvesting at Haylands Farm in the archive picture from the 1950s included in your September edition. It was though his youngest brother Roy Weller – my Dad! Gerry had been born in 1929 so would have been much older than the lad behind the wheel, while Roy entered the world in 1943, the same year that their elder brother Douglas died when the Wellington bomber on which he was rear gunner was shot down over Belgium on his 24th mission. His name is recorded on Graffham war memorial. They had two more brothers and two sisters, all living at the time in what was then called Brick Place and now known as Lilac Cottage, next to the Empire Hall. They were a big Graffham family! The names in your caption may have been muddled, but thanks all the same for jogging so many memories! – [Jason Weller, Kelston, The Street, Graffham.](#)



SPECIALISING IN RESTORATION OF TRADITIONAL HERITAGE BUILDINGS

All aspect of roofing and construction completed
Family run business with over 30 years of experience



- ✔ Tiling
- ✔ Slating
- ✔ Flat roofs

- ✔ Repair works
- ✔ Chimney works
- ✔ Lead works
- ✔ General Building

CONTACT

- ✉ info@newheightsroofing.co.uk
- ☎ 07508 468418


NEW HEIGHTS
ROOFING AND CONSTRUCTION

Double baptism for Major boys on St Giles' Day



It was a two-for-one christening for Ted and James Major when the two brothers were baptised at the same time, on Sunday 1 September – St Giles Day – at St Giles Church, where their Dad Sam had been baptised all those years ago and where he married Mum Charlotte more recently, before moving into Carpenters Town. The Rev Vivien did the honours.

Each of the boys – now three and one respectively – had one Godfather and one Godmother, all close friends of the proud parents.

Wedding bells: Charlotte and Ben, 12 September

Charlotte Ellis first came across Graffham while documenting the villages around Midhurst as part of her final university dissertation and thought then that St Giles was “such a beautiful church in a beautiful area”. So it seemed the perfect place for her marriage to Ben Luff on Thursday 12 September. They met at work – with the PMW marketing agency at Billingshurst – and now live at Horsham, but she



has a family connection here with her grandparents living nearby at Bepton. She and Ben visit them often, frequently taking in a Graffham walk along the way. She was driven to the church with her Dad – in a Volkswagen campervan. She wore a strapless A-line dress and carried a bouquet of cottage garden flowers, created by Kirdford's Bud & Flower, matching the floral decorations placed in the church that had been grown by Charlotte herself at her home. She was attended by four bridesmaids, all wearing

light dusty blue gowns. Not to be outdone, Ben, in a navy blue suit, had two best men and two groomsmen. Fifty five family members and friends formed the congregation at the service, conducted by the Rev Vivien. As the bells rang out, the newlyweds left for a reception at Upwalham Barns – then a three-week honeymoon to New Zealand.



Wedding bells: Olivia and Tom, 7 September

Olivia Lamming and Tom Sandberg had a sparkling start to married life – at their wedding reception, held in a marquee erected behind her mother Dinah’s new home at Ariel Cottage, in The Street, Graffham... on one of the wettest Saturdays of the month, 7 September. The couple had wed that afternoon at St James’ Church in neighbouring Heyshott, where the family had a house until recently.

Making sure our Empire Hall's here in the future

The Empire Hall held its annual meeting on 18 September. Here's an abridged version of Chairman Sally Blunt's report.



The Empire Hall's finances are tight. Normal operational costs are only just covered by hire income, which totalled £13,000 in the past year. For fabric repairs and capital expenditure, we rely on fund raising and grants where available. The hall receives no regular funding from local councils or other bodies. We do not have any debt and our reserves are currently healthy, but we believe that the whole roof will need to be repaired in around a decade, which will be enormously expensive. We have therefore begun to think about the need for a dedicated roof fund.

Meantime, we have recently had roofers complete 'tile management' – replacing damaged or missing tiles and other remedial work – on three sides of the roof. We hope to be able to tackle the more seriously damaged north elevation soon.

The Empire Hall was gently busy over the past year with our faithful regulars – the exercise and yoga classes and treatment room users, as well as the many village groups such as Graffham Garden Group, Graffham Down Trust, Graffham Parish Council and the Thursday Club. For the sporty, we were pleased to add the pickleballers, kindly sponsored by The Three Moles, to the established Badminton Club. St Giles' Harvest and Lent Lunches and Christmas Fair made good use of the hall and provided a great opportunity for the village to gather.

We were delighted to welcome back Graffham Empire Movies, which these days is greatly enhanced by the new state-of-the-art audio-visual system installed in the past year, thanks to a grant from the Lottery Foundation, for which we are very grateful. It is the icing on the cake for the main hall after all the work done in 2022 to repaint the lines, recarpet the stairs and make new cupboard fronts under stage. Like the rest of the village, the building now also has superfast broadband and wifi.

Graffham Festival packed out the Empire Hall in June – for the Petworth Voices choral workshop, the sell-out Philip Jackson talk and *Graffham's Got Talent!* revue, the lovely film screening and more. Thanks to the festival for its generous donation to hall funds.

Thanks too to Jim Kirke, who has staged all sorts of fund-raising events for the hall – excellent plays which kept everyone laughing on wintry nights, tribute bands that



The Easter Market and sell-out Songwriters Circle concert – just two of the events that packed out the Empire Hall in the past year.

kept everyone dancing, as well as Charlie Austen with her guitar and lovely songs. Ed Blunt and his songwriting troubadours will be back again in January with stories and music to lift and soothe the soul. Tickets for the next season of entertainment are on sale now via the Empire Hall website – see the pull-out section in the centre of this edition of *Graffham Parish News* for details.

The Easter Market, our main annual fundraising event, although still brimming with lovely things to buy and masses of home-made quiche and cake for lunch, did not see the usual custom from the village, so it only made half the profit of the previous year's event, which was disappointing. Please everyone put the next one in your diaries – the Saturday before Easter weekend. The hall has also been a popular location for private events – children's and grown-ups' parties and funeral wakes.

The variety of events staged and the kind people who look after our 'grand old lady of the village' and each other never fail to amaze me. This atmospheric, characterful village hall needs a team of volunteers to manage it.

So big thanks are due to our committee of trustees – Gillian Charlesworth as Maintenance Officer, Carole Sargent as Treasurer, K Consalvis as Secretary, Diane Bellis representing the Thursday Club, Sarah Lydiard-Wilson representing the Graffham Village Health Association, Jill Mclean representing Lunch Club, and Fiona Jacob representing Graffham Parish Council. Thanks also to Neil Mclean who has been helping us with legal advice to allow us access to the roof.

I have spent seven years in total caring for this wonderful building, as bookings secretary and also, for the past couple of years, as chairman, but I shall be standing down in September 2025. If there's anyone interested in succeeding me, then come and have a chat. Let's make sure our Empire Hall is here for now, tomorrow and for future generations.

GRAFFHAM DOWN TRUST

invite you to a very special

Back by
Popular
Demand

General Knowledge

**Q U I Z
N I G H T**

and social evening



OCTOBER
12TH
7:30PM

THE
EMPIRE
HALL

TICKETS £9
PRIZES! BAR!
NIBBLES!

JOIN QUIZMASTER MICHAEL BLENCOWE FOR AN ENTERTAINING, ECLECTIC QUIZ AND AN UPDATE ON THE WORK OF GRAFFHAM DOWN TRUST.



www.graffhamdowntrust.org.uk

DETAILS AND
BOOKING AT
[buytickets.at/
graffhamdowntrust](http://buytickets.at/graffhamdowntrust)



Your guide to what's on at our Empire Hall this winter



SATURDAY 26TH OCTOBER, 8PM
EMPIRE HALL, GRAFFHAM GU28 0NL



THE REGALETTES

A new comedy by Kate Bramley

with music by Jez Lowe



Supported using public funding by
ARTS COUNCIL ENGLAND



Badapple Theatre takes us back to the 1930's, the cinema decade spanning Hitchcock noir and classic Technicolor showstoppers.

Celebrity and rural life clash head on when a new movie is set to premiere at the tiny Regal Cinema in Bottledale.

Comedy and intrigue ensues as our intrepid heroines The Regalettes suddenly find themselves at the heart of a very silly mystery.



TICKETS £15 FROM WWW.EMPIREHALL.ORG.UK
DOORS AND BAR OPEN 7.30PM

Supported by

applause
RURAL TOURING

Empire Hall to serve up treats all winter



There's something for everyone coming to the Empire Hall this winter season with a mouth-wateringly varied programme featuring comedy, blues, Americana rock and roll, folk, a Robbie Williams tribute, movies, a talk, quiz, reeling and more – quite apart from events such as the Christmas fair, bridge tea, Thursday and Lunch

Clubs. Keep an eye on *Graffham Parish News* and Facebook's Graffham Noticeboard for further details, but meantime here are some key save-the-dates.

Book early to avoid disappointment!

Besides offering a great evening out, most of the events are staged to raise funds to safeguard the future of our Empire Hall. Most offer a bar.

The Empire Hall, which has been the hub of the village's social life since 1907, also hosts a full and varied programme of exercise and yoga classes and health treatments of various types. For details, see our What's On listings on pages 53 and 54.

It is a popular location, too, for private celebrations and events of all types – from birthday parties, anniversary gatherings and wakes to business meetings. To find out more, email bookings.empirehall@gmail.com



Friday 4 October 7 for 7.30pm

Concorde 'lands' in Graffham

Illustrated talk

£15

Former British Airways' Chief Concorde Pilot Mike Bannister shares his unrivalled insight into the world's only supersonic airliner. He knew Concorde better than anyone – from being appointed its youngest First Officer in 1977, soon after it entered service, to commanding its final scheduled flight 26 years later. Since then, he's become the best-selling author of the definitive Concorde book. At this fund-raising event for St Giles Church, he'll share videos and photos from his personal library, swap anecdotes and take questions from the audience.



Sunday 6 October 12.30pm

Harvest Lunch

Bring-and-share community meal

Free – but donations appreciated



A wonderful way for villagers to enjoy each other's company in a traditional way. Take whatever is your favourite dish and any drinks you'd like. There will be children's activities. Donations invited to cover the hall's hire costs with the bulk given to Petworth Foodbank. All welcome.

To book: No tickets/bookings needed.

Saturday 12 October 7 for 7.30pm

Quiz Night

LOL fund-raiser for Graffham Down Trust

£9

The incomparable Michael Blencowe – wildlife guru and *Graffham Parish News* columnist – returns for his annual entertaining, eclectic, laugh-out-loud fun and games, along with an update on the trust's work in the reserves high above the village. Tables of up to six – but you can buddy up if you don't want to pull together your own team. Nibbles on the house, and the bar will be fully stocked.

To book: www.buytickets.at/graffhamdowntrust



Saturday 26 October 7.30 for 8pm

The Regalettes

A new comedy show

£15



Celebrity and rural life clash head on in this new comedy. Two sisters in the 1930s are about to have their quiet world turned upside down when a new Hollywood film is to premiere at their tiny local cinema. With a fusion of film, music, and clowning elements to give audiences a Regal night out. *West End standards of performance, lighting and design at a fraction of the cost* – Yorkshire Post.

To book: www.empirehall.org.uk/tickets

Thursday 17 October 2-5pm

Charity bridge tea

The classic cards game – and classic tea

£60 for four

What could trump this?! An afternoon playing the classic game of cards – with a full afternoon tea! In aid of St Giles Church. **To book:** Contact Nettie Lanaghan on 07798 624466 / thornhills@aol.com



Saturday 16 November 7.30 for 8pm

Joanna Cooke

Blues concert

£12

Motown legend Martha Reeves described Joanna Cooke as “the baby girl singing the blues”. Much like her South West blonde counterpart Joss Stone, Joanna demonstrates that true soul and emotional connection is not simply constrained by colour or creed. Her self-penned songs leave a lasting impression, by dint of their raw honesty and song craft. *A voice that drips with soul and layers it over you like warm honey* – Dart Music Festival

To book: www.empirehall.org.uk/tickets



Friday 22 November 7 for 7.30pm

Graffham Empire Movies

Little Women

£10 adults, £5 under 18s



Graffham Empire Movies is here to bring great films to the village while raising funds for our Empire Hall. It opens its winter season with this beautifully filmed, wonderfully warm, funny and heartfelt version of Louisa May Alcott’s coming-of-age classic featuring a terrific all-star cast that collected multiple five-star reviews. Bring your hankies!

To book: www.ticketsource.co.uk/GEM

Other films for early 2025 on:

Saturday 15 February

Saturday 25 January

Saturday 29 March

Saturday 11 January 7 for 7.30pm

Big Bang Love

Songs and stories from three acclaimed singer songwriters

£17

Ed Blunt, Daisy Chute and Hollie Rogers return after their sell-out, standing ovation concert of January 2024 for another show featuring their genre-blurring, captivating songs and multi-instrumental talents. Fans of Joni Mitchell, Paul Simon, Joan Armatrading, Debbie Harry, Randy Newman and the like won’t want to miss this evening of storytelling, humour, and outstanding musicianship – plus new songs from their most recent projects. *One of the best live folk music experiences available* – FATEA magazine

To book: www.empirehall.org.uk/tickets



JOANNA COOKE

Saturday 16th of November 8.00pm
Empire Hall, Graffham GU28 0QB



"...a voice that drips with soul. Joanna takes a song and layers it over you like warm honey until it floats you away"
Dart Music Festival

Tickets £12 from www.empirehall.org.uk
Doors and bar open 7.30pm

Saturday 18 January 7 for 7.30pm

Burns Night Celebration

Reeling and haggis

Pricing to be confirmed



Dig out your tartan for reeling to live music provided by the ever popular Sussex Pistols. Dust off – or learn – your dancing steps at practices on preceding Sunday afternoons. The haggis will be piped in and addressed in the centuries-old fashion before being shared with all those attending. This is a Graffham tradition not to be missed, regularly selling out, so book early to avoid disappointment!

To book: Contact Harriet Rowntree at 01798 867536.

Saturday 8 February 7.30 for 8pm

True Strays

Americana roots, rock and roll

£15

A cathartic celebration of alternative roots and blues rock. True Strays are lifelong friends, songwriters and country boys from Bristol, fast carving out a niche of their own in the UK Americana scene. Their songs focus on the dirt that life throws at you and how struggle can be transformed into something better, drawing influences such as Neil Young, Muddy Waters, Fleetwood Mac and modern retro inspired acts like Alabama Shakes and the Black Keys.



To book: www.empirehall.org.uk/tickets

Saturday 22 March 7.30 for 8pm

Daniel Budd and Band

Tribute to Robbie Williams

£25



A Robbie Williams tribute act like no other! Daniel takes on a huge stage presence and effortlessly fills the shoes of the born entertainer, blowing minds with how much he looks like Robbie – and sounds the same. Daniel showcased his talents on BBC 1's *Let It Shine*. Show judge Take That's Gary Barlow told him: "You are an amazing impersonator. It's unbelievable how much you sound and look like Rob." Daniel continues to impress and wow people all over the world – including Robbie Williams himself.

To book: www.empirehall.org.uk/tickets

Graffham Empire Movies

Bringing cinema to the village – and raising funds for our Empire Hall



A terrific all-star cast in a beautifully filmed, wonderfully warm, funny and heartfelt version of Louisa May Alcott's coming-of-age classic that has won multiple awards and wowed critics and audiences alike. Bring your hankies. **U 134 minutes**

★★★★★ *The Guardian*

★★★★★ *Empire*

★★★★★ *The Independent*

★★★★★ *Time Out*

★★★★ *Daily Telegraph*

★★★★ *The Times*

Friday 22 November

Empire Hall

Doors and bar open 7pm for 7.30pm start

Interval ice creams

Tickets from ticketsource.co.uk/GEM or at the door on the night

£10 adults, £5 under 18s

Bill's bygones: Budapest, benches, bishop

A regular feature in which joint editor Bill Barrett looks back at what was happening in the village and the wider world this month in the past.

10 years ago – October 2014: Singer songwriter Emily Maguire performs at the Empire Hall, where Graffham Empire Movies screens *The Grand Budapest Hotel*. At the Village Breakfast in the rec's pavilion, Bill Barrett talks on “Oral Pathology and the Cause of the First World War”. A dinner is held at Seaford College to celebrate the Tennis Club's 50th anniversary. Nicola Sturgeon becomes leader of the SNP. Tory-defector Douglas Carswell becomes UKIP's first elected MP after the Clacton by-election. Meghan Trainor's debut single *All About That Bass* is UK number 1. Halloween is the warmest on record in the south (23.6°C). Deaths of Joscelyn Fay Johnson, teacher at Seaford College and widow of its long serving headmaster Charles (aged 93), snooker player Graham Miles (73), singers Alvin Stardust (72) and Lynsey de Paul (64) and actress Lynda Bellingham (66).

25 years ago – October 1999: Three new benches in the north-eastern corner of the rec are formally unveiled by the widows (Mrs Loring, Mrs Speak and Mrs Harmer) of the three men to whom they are dedicated. Graffham Tennis Club's tournaments end with wins for Sara Villiers and Julia Boadle in the ladies' doubles and for Andrew Wilson-Smith and Pip Kershaw in the mixed doubles. Chairman Chris Major presents the trophies at the club dinner at the Foresters. After running an outside bar, a “totally sober” Val Wingate (The Three Moles' landlady) spots a puma-like creature between Graffham and the pub. Trial of Dr Harold Shipman begins at Preston Crown Court. The Ladbroke Grove rail crash near Paddington kills 31. Tracey Emin exhibits *My Bed* at the Tate Gallery and is shortlisted for the Turner Prize. Deaths of comic actor Derek Guyler (*Please Sir!*, *Sykes*, 85), US golfer Payne Stewart (42) and singer Lena Zavaroni (35).

50 years ago – October 1974: Eric Kemp is consecrated as the new Bishop of Chichester. Annabelle Wilkinson, better known as actress Anna Carteret (*The Pallisers*, *Juliet Bravo*), marries BBC Head of Plays Christopher Morahan at St Giles. Despite Unicorn landlord David Douglas' objection, Midhurst magistrates approve the application by Martin Chennell (represented by solicitor Michael Paterson) for an off licence at Heyshott stores. A proposal to ban caning in West Sussex schools (primary and secondary) is rejected by the County Education Committee. Harold Wilson wins the second general election of the year with a majority of three as Enoch Powell returns to the Commons as Ulster Unionist MP for South Down. Five are killed in the Guildford pub bombings. Sitcom *Porridge*'s first series is aired on BBC1. Queen's breakthrough single *Killer Queen* is released.

Graffham Chronicles: Something in the air

In her column this month, local historian Pauline Goodwin focusses on an aspect of the neighbourhood often ignored or taken for granted – the various noises that fill the air hereabouts.

If silence is golden, it is surprising that, since early times, humans have filled the world with noise. Shakespeare alludes to our joy of hearing: “Be not afeard; the isle is full of noises, sounds and sweet airs that give delight and hurt not.” Certainly, there has been a constancy in Graffham with “sweet airs” in abundance over the centuries.

Kipling referred to the Downland resonance of the “wavering maternal notes of the sheep”. Wooded West Sussex offers a susurrations, a murmur, a rustle of the wind in trees, a timeless melody of songbirds with the drowsy wood pigeons’ coo punctuated by the raucous carrion crow. In spring the first cuckoo creates excitement, and the nocturnal sound space fills with the hoots of owls, echoing round the Downs along with the churr of the nightjars on the Commons. The donkeys frequently and noisily bray out their laughter at the entire village.

The history of humanity has a soundtrack. Way back in time, the Neolithics worked at their flint mining enterprises. There are three distinct areas on Graffham Common where flint mines have been located. Sounds of large-scale flint napping and excavating with deer antlers would have filled the air. Other industries in Graffham, like charcoal making, lime burning, forestry and iron smelting, would all have added to the sonic space. More intrusive are the machines that have added their voices in more recent times from the sounds of transport, including vehicles, and planes. The chugs of agricultural machines abound, accompanied by screams from massed seagulls, following the plough. Gardens and waysides are now tended by a variety of noise-making mowers, flails and strimmers. Unlike a half century ago, when the silent humble faghook, scythes and hedge clippers were used.

Fifty years ago, these Graffham sounds were accompanied by the frequent drone of Goodwood cars on the motor circuit which was clearly audible in the village. The welcome sound of the ice-cream van was a highlight of Sunday afternoons while sporting sounds came from the Recreation Ground, especially the revered thud of leather on willow. Later in the afternoons, Florence Nagel’s Irish wolf hounds would fill the air as they howled for their supper.

A couple more decades further back and the acoustic space was filled with the sounds of all manner of war planes, ranging from the Lysander engaged in stealthy

missions, to the massed squadrons, to isolated dog fights above the Downs. Nowadays, the low-level training of the Chinook over the village has reminded us of those warbirds.

There was often more than one blacksmith in Graffham, and Edward Thomas described their musical sound in his poem *Aspens* as “the ringing of hammer shoe and anvil”. The Graffham band often paraded, playing their music, as to whether it could be described as “sweet airs” is uncertain!

Some of the most ancient sounds were made using ram’s horns, or shofar, as referenced in many books of the Bible. These record the sounding of horns for all occasions and events, some joyous, some sad, some terrifying. An example of the latter is from the book of Joshua when seven priests blew seven horns and the walls of the city came tumbling down! More locally, an ancient bronze horn was found, with documents, in a well in Battle. It is quite a mystery as to why this carnyx should be in Sussex. It has been suggested that it was blown there after the defeat of Harold by the Normans and then discarded in the well.



The ringing of bells took over the horn’s [The ram’s horn found in a well at Battle.](#) role with missionaries using handbells to call people to worship. They were introduced to Christian churches in around 400 AD by Paulinus, Bishop of Nola in Campania, forming a network of communication across the country with almost everyone living within the sound of church bells. In France, the sound of the church bells determined the actual boundary of a village, as the villagers’ days were ruled by the chiming bells.

In Graffham, our sonic space is impacted by the undulating countryside. Tracey Carr mentioned that in the Bishops Hill area the church bells cannot be heard in the dips. Jane Constandurous heard them at Hoyle Farm, on the village’s boundary with Heyshott. Cindy Bradley hears the bells at Norwood Lane and John Pescott informs us that when the wind is in the right direction they can be heard at Woodcote. The range is considerable, providing the soundtrack to our historic moments, chiming out celebrations and tolling sadly to reflect grief. Most importantly, bells are the sound of freedom, peace and good health, as in World War II and the Covid pandemic when they hung silently until the day they could ring in peace and freedom from pestilence. Dove’s Guide for Church Bell Ringers states that the Graffham bells of St Giles are one of 37 collections of six full circle



St Giles' four bells were taken down for renovation in 1982 – with six rehung in the belltower. Trevor Finch and Peter Parish remove the old fourth bell (left). Lined up on a lorry before being rehung are, from left, the new replacement for the Wakefield, the old Wakefield (now Sanctus) and the refurbished Fourth bell, with the new frame for the bells on the right. The humans shown with them are, from left: Bill Robinson, Peter Parish, Christian Budd, the Rev David Grant, Ben White, Trevor Finch, Antony Elstone and George White.

ring belled churches in the lieutenancy of West Sussex. However, it was not until 1984 that Graffham had these six bells. The Church of St Giles has been here certainly since Norman times but, as George White states in his history of bell ringing here, “by the 1400s a tower must have been constructed as... the first record of a bell appears”.

The successor to King’s College, Cambridge, bell maker and vintner, J. Daniels, made five bells for Sussex, one of which came to Graffham. The second bell at St Giles was by Roger Tapsil and Thomas Wakefield in 1621. The third bell was by Bryan Eldridge. During the 1885 rebuilding of our church’s tower, the Eldridge bell was stolen, leaving only two bells – but the new tower required four, so the Daniel bell was melted down and re-cast as a replacement for the stolen Eldridge. A fourth was added, funded by Edith Lascelles. Frederick Lowten Spinks paid for the treble and second bell.

Records are scant covering the period from 1900 to 1979. Colonel Loring recalled that Percy Parry tolled the single bell and Janie Taylor regularly tackled the Ellacombe chiming mechanism. Various choir members during this time also operated this – including me! In 1979, accomplished campanologist Trevor Finch

was encouraged by the then rector, the Rev David Grant, to form a band of bell ringers. Kate Bertram was one of this team even though she was 70 years old. She kept ringing until her 80s.

But still there were the only four bells. The Parochial Church Council agreed to fund two extra bells if the tower could support the extra weight and stress. Surveys confirmed that the tower had this capacity and so the 1982 refurbishment began. Unfortunately, the Wakefield bell had become out of tune and was thus retired, so the peal was not complete.

In 1984, a donor came forward to fund the sixth bell which bears the inscription “A gift from a friend”. It was not until the death of Eddy Loring that it was discovered that she had funded this sixth bell.



St Giles' bell with the mysterious benefactor. It was not known until after the death of Eddy Loring that she had funded the bell. ©

John Pescott.



CHARITY BRIDGE TEA

in aid of St Giles Church, Graffham

Thursday, 17 October 2024, 2-5pm The Empire Hall, Graffham

Donation of £60 per table

*For more information and to reserve a table, please contact
Nettie Lanaghan on 07798 624466 or at thornhills@aol.com*

Nature Notes: Fashion victims

A regular column by Sussex naturalist and wildlife guide Michael Blencowe, who can regularly be spotted in and around Graffham.

The Wind in the Willows is one of Britain's most beloved books. Yet this story of riverbank wildlife would have no doubt lost some of its charm if, in the final chapter, Kenneth Grahame had introduced a new character – a deranged American serial killer who eats his victims.

It's easy to cast American mink as the bad guys. With long, sleek bodies equipped with razor sharp teeth they're natural born killers as vicious in water as they are on land. Part polecat, part piranha. But it was the mink's adaptation to winter and water – thick, waterproof fur – that was its downfall. Enter the real villains of this tale – the ghastly women who craved mink fur coats and the greedy men out to make a fast buck from a mink massacre.

American mink were imported into the UK in 1929. By the Fifties, mink farms were springing up everywhere in the UK producing pelts at full pelt. But fur farmers had overlooked one important thing – mink were smarter than they were.

Work parties 2024-25

Join us for some outdoor fun and exercise after which you can feel virtuous for having done something positive for your environment! Did we mention that coffee, tea and cakes are provided?

Meet at **Graffham's St Giles Church at 9.30am**. You'll need a pair of gloves, strong shoes or boots and warm clothing. Please email jimkirke@hotmail.com if you plan to come along and say if you would like a ride up so that he can arrange transport.



20 October	Sunday	5 January	Sunday
23 November	Saturday	1 February	Saturday
15 December	Sunday	15 March	Saturday

Mary Potter remembers working on a farm near Buxted in East Sussex: “They built the cages with ordinary wire netting. The mink made short work of that and escaped. With stronger netting, they started again with more mink, but again, the wire was no match for their teeth. After a third attempt with stronger wire netting, they gave up and just released them.”



Mink, pictured by © Derek Middleton, SWT.

The result of a new alien predator invading our waterways was catastrophic. Kingfishers, ducks, moorhens, fish and toads suddenly found themselves on the mink’s menu and were swiftly dispatched with a Dracula-style neck bite. The worst victim was the water vole – *The Wind in the Willows’* Ratty – which mink almost completely eradicated from Sussex.

The late Jim ‘The Fish’ Smith walked and worked the River Ouse for decades. Legend has it that Ouse river water runs in his veins and, a year before he passed, I talked to him about his mink memories. He first encountered a mink when one cruised past him downstream on a piece of driftwood. “I had never seen a mink before and had no idea what it was,” said Jim, “but it wasn’t long before we saw God knows how many along the river.” During the 1960s, Jim and four others were employed to trap and humanely kill mink along the Ouse. “In those days we were doing nothing else but trapping mink – 25-30 a week.”

Thankfully fashions and attitudes change and mink farms are gone, but their ferocious, furry legacy remains in our rivers. “These days you don’t see that many mink so I have to conclude that the effort we have put in to controlling them has been successful,” Jim said. “But you’re never going to get rid of all of them.”

- You can find details of Michael’s upcoming events, wildlife sightings and adventures or book him for a wildlife survey of your garden or land at:



michaelblencowe.com

Out and about: Brambling

An occasional column by Jonathan Simons, aspirant vintner and font of useless knowledge on so many things obscure and without consequence.

One of the great pleasures of autumn is to go out brambling. Shortly after moving to Graffham, we picked up on a very productive spot near Lickfold. I pick two-handed with a plastic tub and with Jenny's more discriminating contribution we can gather two kg in an hour. Our harvest then goes into puddings, wines and spirits.



In recent years, however, our field of choice has become so overgrown that it is difficult to move around. Moreover, the neighbouring buildings seem to have become more inhabited so that we began to feel we were picking in someone's back garden. Seeking an alternative patch I found that the impressively extensive rough fields between Graffham's Rec and Norwood Lane presented a good bet to top up a poor initial harvest with good public footpath access.

Then I found what I was looking for – the perfect spot, by the Recreation Ground itself. I imagine this place has been popular for this activity for many years. I have only just got wind of it. The hedgerow is a continuous stretch of bramble, blackthorn, sloes, hazel and hawthorn and seems to be sympathetically managed with a view to its importance for wildlife. However, what really won me over about this location was my very first sight of a Brown Hairstreak Butterfly flitting in and out. I have read subsequently that there have been records here of this scarce species.



A Brown Hairstreak Butterfly enjoying brambles by Graffham's Recreation Ground.

I followed this visit up by inspecting the blackthorn for the eggs. No luck but it is an absorbing activity and I hope to be successful in the future. Indeed, the rough fields up to Norwood Lane seem equally good locations for this butterfly. So I am all fired up! On the down side I recently learnt that almost all blackberries contain fruit fly larvae (wrigglies). You can possibly get rid of them

by soaking the fruit but it does no harm if you do end up eating some. I have not let it put me off.

I have bramble wine in bottles going back years. It usually turns out to be rather bland. More exciting is to soak the berries in vodka to create *Crème de mûre*. I first made this from some blackberries we found in my mother-in-law's freezer after she passed on. We brewed this liqueur in her memory and distributed small bottles to family members. It has a special place in our drinks cabinet.



Two labels from Jonathan's cellar.

Graffham Parish News' awesome October quiz

Ten quick fire questions from Bill Barrett to test your local, topical and wider general knowledge. Answers at the top of page 57 (no cheating!)

- 1 Graffham is mentioned in *The Four Men*, a novel by which Sussex-based, English-French writer and historian who lived from 1870 to 1953?
- 2 A statue of Admirals Nelson and Murray ("Murray or None") stands in which street in Chichester, near where Murray built his house (now the Ship Hotel)?
- 3 Which former US president is 100-years-old this month?
- 4 Killed at Ypres in October 1914 aged 23, what relation was Lieutenant His Highness Prince Maurice of Battenburg to Queen Victoria?
- 5 Which social, weekly, free-to-enter 5 km jogging "phenomenon" started with 13 people in Bushy Park, south west London, on 2 October 2004?
- 6 Who made his last appearances on *Match of the Day* and *The One Show* on 4 May and 22 July respectively earlier this year?
- 7 After 43 years of early starts, who presented his final sports bulletin on Radio 4's *Today* programme last month?
- 8 Which group spent two weeks at number one in the UK singles chart with *I'm into Something Good* in October 1964?
- 9 Yachting's America's Cup, being held this month, is the [a] 37th, [b] 67th or [c] 97th such competition?
- 10 Which actor, who played Mr Sowerberry in *Oliver!* and iconic comic characters called Rupert and Reginald, died in October 1984 aged 57?

Hot off the press this month comes a report on the summer's only home fixture for Graffham's Ladies cricket team – Brett Creed's Valkyries. Tennis begins its winter season and bowls wraps up until spring.

Stewart Smiths' grandson wins Olympic Bronze



Olympian Toby with his Graffham grandparents Derek and Janet Stewart Smith. Picture © Vivien Turner.

A Paris Olympics medal made an appearance in Graffham in late August when Team GB sprinter Toby Harries visited his grandparents Derek and Janet Stewart Smith, of The Street. Toby was a member of the 4x400m relay team that clinched Bronze, behind the USA and Botswana, in the last full day of the Games. Although he missed out on running in that final, he did take part in the heat, when GB was second behind Botswana but ahead of the USA, and in the qualifier – which entitled him to join his team mates on the podium to receive his medal and scroll.

Toby, who has just turned 26, is a two-time British champion for 200 metres. With a 400m personal best of 46.36s, he's been a Team GB 4x400m relay runner for five years.

Graffham Ladies Cricket

It was a long wait but Graffham's unlucky Ladies team finally got to play their one and only fixture of the year, at home on the Rec, against regular rivals West Wittering on Sunday 15 September, as the sun shone for most of the day and the temperature nudged 20C.

This being the ninth match against these opponents, each team tries to outwit the other by memorising batting and bowling styles from earlier years. West Wittering appeared to be using the fixture to blood some younger players and Graffham may



Howzat! The two teams join together for a photo after the match with Graffham in their blue and white strip, sponsored by Graffham Village Shop.

have been a little guilty of misjudging them! Graffham's captain Louise Creed won the toss and elected to field. For the first time the match was played in a close to traditional format, with no guarantee that the whole team would bat. Careful field placement meant that the early West Wittering batters were largely limited to singles, though the visiting youngsters each managed to reach double figures.

Wickets did fall, though, with Vasu making the breakthrough with a ball that sped to Louise at cover, who managed to hold on to it. Louise clean bowled the next victim, followed by Vasu again, then Beanie Bradley. West Wittering's ex-county player Den clattered the ball over the heads of the fielders for several fours and sixes before retiring shortly before the end of the 20 overs. Their total of 111 seemed achievable, though the niggling knowledge that Graffham had given away too many wides and no balls limited optimism.

Nevertheless, Graffham got off to a tremendous start, with Beanie spraying the ball around the Rec with devastating confidence. At 26 runs she was retired – conveniently as she was due to attend Evensong at Eton College by 5pm! (Surely unprecedented!? Ed.) Graffham's subsequent batters failed to live quite up to Beanie's standard though Jules Sparkes and Ardra both reached double figures. Ginny Barrett held on valiantly towards the end of the innings while wickets tumbled around her and Graffham's tailenders, Vasu and Louise, managed to hang on until the end of the 20 overs, with the scoreboard reading 81 runs. West Wittering's young players had turned out to be spectacularly fast and accurate and played havoc with the home team's middle order batsmen, which, with their generosity with extras, was Graffham's undoing.

Graffham Bowls Club

by Secretary Liz Pegram

Another season has come to a close for Graffham Bowls Club – with a couple of new names on our trophies this year, which is always good to see. In the finals, played in lovely sunshine on 31 August and 1 September, Ken Angell won the Hulbard Cup while Mike Housham was victorious in the Captain's Cup. Kym Pegram took home both the Police Shield and the Robertson Cup. Our last event of the year was scheduled to have been our candlelit bowls event when we invite friends and family to join us for a fun-filled evening. Fingers crossed, the weather will have been kind to us!



Club captain Wendy Folkes presents Mike Housham with his trophy (left) while Vice-Captain Charlie Tyrrell hands Ken Angell his.

Graffham Tennis Club



The summer league season finished in September with rescheduled matches taking place in showery conditions. The final tally looks like a fifth place in Division 4 for the Men's team, a probable relegation from Division 1 for the Ladies A, a confident second place for the Mixed team, and a likely promotion for Denise Clay's Ladies Bs.

Graffham Tennis Club East Hants results

21 Aug	Won 6-2	Men's Doubles	Div 4	v Liphook
8 Sept	Lost 6-2	Mixed Doubles	Div 2	v Swanmore B

After a short breathing space, matches begin for the winter season, when Graffham is entering two mixed teams – A (Division 1) captained by Andy Craig and B (Division 3) by Richard Bates. Home matches (see below) will take place on Saturday or Sunday mornings while away matches tend to occur on weekday

Graffham Tennis Club East Hants League home fixtures: October

All spectators welcome!

5	Sat	1.15pm	Mixed Doubles	Div 3	v Kingsley
13	Sun	6.30pm	Mixed Doubles	Div 1	v Denmead
20	Sun	6.30pm	Mixed Doubles	Div 1	v Steep A

evenings if the host club has floodlights. Club tournament winners can be celebrated in the pavilion at the end of season awards evening on Saturday 23 November. Look out for details in next month's *Graffham Parish News* or on Facebook's Graffham Noticeboard.

Motorsport

Goodwood Revival took place as usual across September's first weekend – providing a chance for Graffham ladies' cricket coach Brett Creed to shine in one of its top races. He has worked as an engineer at Aston Martin specialist RS Williams, of Cobham, for 30 years and serves as its race engineer, preparing cars, generally classic Astons of the 1960s and 70s for various race meetings.

The car that was his focus for this year's Revival was acquired about a year ago with the Stirling Moss Memorial Trophy very much in the owner's mind. The car was originally bought new in 1960 by legendary racing driver Tommy Sopwith, of the aviation family. Stirling Moss was its driver when it won its first ever race at Goodwood in 1960. Sixty-four years later, NASCAR regular Jimmy Johnson and Scottish three-time Indianapolis winner Dario Franchitti were the pairing chosen to drive it at the Revival. Starting ninth on the grid, they powered through the field to win the race by 37 seconds.

Brett is pictured here with the car – and holding a photograph of the very same vehicle that had hung on his own Dad's bedroom wall... where Brett was born 59 years ago. He said: "All these years later I ended up working on the car and engineered it to a win in the Stirling Moss Memorial Trophy at Goodwood, where it won its first race – just a fantastic coincidence and a wonderful weekend."



TEDDY TIME in the Pavilion TODDLER GROUP

Wednesdays 10.15-11.30am
Pavilion, Graffham Rec

No charge. All welcome. Just come along!

W. Bryder & Sons

est. 1863

The Gables
Tillington
GU28 9AB
Tel: 01798 342174

95 Lower Street
Pulborough
RH20 2BP
Tel: 01798 872000

Email: wbryderandsons@hotmail.co.uk

5TH GENERATION LOCAL FAMILY RUN INDEPENDENT FUNERAL DIRECTORS

24 Hours Service
Private Chapel of Rest
Monumental Stones supplied
Pre-Paid Funeral Plans available
Grave Maintenance service



 KLE Decorators Ltd
Unit C12
New Barn Farm
Funtington
Chichester
West Sussex
PO18 9DA

 07880 317071

 hello@kledecorators.co.uk

 kledecorators.co.uk

We are totally committed to the finest quality of painting and decorating that there is.

Be it the high-end painting & decorating of apartments and offices, refurbishment of kitchens & bathrooms, full interior refurbishments, or renovation works on a listed building, we ensure that all of our work is carried out thoroughly, with due diligence by all our painters & decorators.

Our decorating services include:

- Painting
- Spraying
- Wallpapering
- Specialist coatings
- Traditional paintwork
- Feature walls
- Covings
- Plaster and render repairs
- Woodwork repairs
- Special effects such as graining, marbling, murals



Notes from the belfry: Video, party, weddings

Back in the spring, Graffham's bell-ringers featured in a short film made by village resident Louis Higgins as part of his Film Studies degree course at Kingston University. The four-minute film can now be found on YouTube – just go to bit.ly/graffham-bellringers. It features some beautiful late winter local scenes and well-known village faces. There are no surprises when it comes to the star of the show – George White, the prime mover behind the development of St Giles as a six-bell tower and still a key member of the 'band'.



Video star George (centre).

Summer weather was very much in evidence as the group gathered for a mid-year party kindly hosted by ringer Jacky Gregory at the house she shares with her husband Greg – Northwood Farm. After enjoying the bring-and-share nibbles, her fellow 'band' members and other halves were treated to a tour of the stunning garden and the various stages of what must be one of the oldest houses in the village.

Graffham's bellringers practise in St Giles every Tuesday 7.30-9pm and on the second Saturday of each month 10am-12 noon. If you might be interested, do come along and see what it's all about!

September saw three couples marrying at St Giles, with the bells sounding out as each of the newlyweds emerged to crowds and confetti. Ringing for weddings is just one milestone that ringers can pass in this hobby that continually provides challenges! Our recent beginners have just progressed through to independent ringing so we encourage anyone that may be interested to consider taking it up. As you can see from Louis Higgins' film, all ages are welcome!



St Giles' band of ringers and their partners line up at their summer party.





Graffham Families' WhatsApp group

For all families new to the village or who haven't yet picked up on this – do join us! This group is offered as a service for Graffham families to link up in whatever way is helpful. Just email me at reverendvivien@gmail.com and I'll be glad to add you in. We have almost 30 family members already and would be happy to include everyone! – Rev Vivien

Who's doing what at St Giles in October

Here's the rota for this month's 10.30am services. If you cannot do your slot, please arrange a swap and advise Diane Bellis at diane.bellis@gmail.com and Rev Vivien at reverendvivien@gmail.com

	Welcomers	Reader	Reading	Refreshments
6	TBA	TBA	Joel 2 verses 21-27	TBA
13	TBA	TBA	Amos 5 vs 6-7, 10-15	TBA
20	TBA	Aparicio family	Matthew 3 vs 13-17	TBA
27	TBA	TBA	Genesis 28 vs 11-18	TBA
		Flowers		
		6 and 13	Bridget Lewis	
		20 and 27	Barbara Edge	
		Cleaning		
		Jill and Robert Knight		

Other denominations locally

Methodist: Midhurst. *Minister:* David Muskett *Tel:* 01730 233436. *email:* superintendent@esanddcircuit.org.uk. *Web:* midhurstmethodist.com *Worship:* Sundays 10.00am, and Café Church 1st and 3rd Wednesdays 10.30am.

Roman Catholic: The Catholic Churches of Saints Anthony and George, Duncton, The Divine Motherhood and St Francis of Assisi, Midhurst, and The Sacred Heart, Petworth. *email:* petworth.abdiocese.org.uk. *Tel:* 01798 342169. *Web:* www.petworthcatholic.org

Mass					
Sun	8am	Duncton	Thu	9.30am	Petworth
	9.30am	Midhurst		12noon	Midhurst Convent
	11am	Petworth	Fri	6.30pm	Petworth
Tue	10.30am	Petworth	Sat	9.30am	Midhurst
Wed	9.30am	Midhurst		5.30pm	Petworth

Society of Friends (Quakers): St Anne's Community Centre, St Anne's Hill, Midhurst, GU29 9NN. *Web:* sussexwestquakers.org.uk *Meetings:* 2nd and 4th Sundays 10.30am.

What's on at our village church and chapel

- All residents of and visitors to Graffham are welcome to all services.
- St Giles Church is at the far south end of Graffham Street, near the Downs.
- All Saints' Chapel is opposite Graffham Village Shop.
- Both St Giles Church and All Saints' Chapel are open daily.
- See stgilesgraffham.org or Facebook's [@stgilesgraffham](https://www.facebook.com/stgilesgraffham) for any changes.

October				
4	Fri	7 for 7.30pm	Fund-raising talk on Concorde (see page 31)	Empire Hall
5	Sat	9.30am	Come and Sing!	St Giles Church
6	Sun	10.30am	Harvest Festival Parish Eucharist Trinity 19	St Giles Church
		12.30pm	Harvest Lunch for the village (page 5)	Empire Hall
12	Sat	10.30am	Bellringing practice	St Giles Church
13	Sun	10.30am	Parish Eucharist with anointing for healing Trinity 20	St Giles Church
		6pm	Evensong	All Saints Chapel
15	Tue	9.30am	Morning Prayer then Pilgrims at 10am	All Saints Chapel
16	Wed	12.30pm	Food with Friends	The Rectory
17	Thu	3pm	Fund-raising Bridge Tea (see page 41)	Empire Hall
20	Sun	9am	BCP Holy Communion Trinity 21	St Giles Church
		10.30am	Third Sunday Service with Baptism of Bertie Aparicio	St Giles Church
22	Tue	9.30am	Morning Prayer then Pilgrims at 10am	All Saints Chapel
23	Wed	7pm	PCC meeting	The Rectory
27	Sun	10.30am	Parish Eucharist and Dedication Festival: Last after Trinity	St Giles Church
November				
2	Sat	9.30am	Come and Sing!	St Giles Church
3	Sun	10.30am	All Saints Sunday Parish Eucharist	St Giles Church
9	Sat	10.30am	Bellringing practice	St Giles Church
10	Sun	9.30am	Remembrance Sunday Requiem Mass: Note earlier time	St Giles Church
		11am	Act of Remembrance	War Memorial
		6pm	Evensong	All Saints Chapel
11	Mon	11am	Armistice Day Prayers	War Memorial
12	Tue	9.30am	Morning Prayer then Pilgrims at 10am	All Saints Chapel

What's on in and around the village

For all St Giles and All Saints events, see page 53. For all sports dates, see page 48.

October

1	Tue	10.45am	Arts Society Midhurst lecture on <i>Clash of the Titans: Michelangelo and his Rivals</i>	Methodist Church Hall, Midhurst
		2pm	Arts Society West Sussex talk on <i>The Architecture of Mughal India</i>	Fittleworth Village Hall
3	Thu	10am	UKHarvest surplus food market	Sylvia Beaufoy Centre, Petworth
4	Fri	10am	Chichester District Councillor John Cross surgery	Graffham Vill Shop
		7 for 7.30pm	Concorde 'lands' in Graffham (see page 31)	Empire Hall
5	Sat	11am	Chichester District Councillor John Cross surgery	Bury Village Hall
		9am-2pm	Midhurst Farmers Market	Midhurst
6	Sun		Chichester half marathon	Chichester
		12.30pm	Bring-and-share Harvest lunch (see page 5)	Empire Hall
10	Thu	2.30pm	Thursday Club AGM	Empire Hall
12	Sat	7.30pm	Graffham Down Trust annual quiz night (see page 28)	Empire Hall
13	Sun	11.30am	Racing Season Finale	Goodwood
		7pm	Folk music night	Three Moles
14	Mon		Deadline for delivering your crumblethon crumbles (see page 7)	Frederick House
15	Tue	9-11am	Great Feet foot health professional ¹	Empire Hall
17	Thu	2-5pm	Charity bridge tea (see page 41)	Empire Hall
18	Fri		Seaford College half-term (to 3 Nov)	
		evening	Petworth Proms (till 20 Oct) (see page 11)	Petworth Festival
19	Sat		Academy for Witches and Wizards (daily till 3 Nov)	Petworth House
20	Sun	9.30am	Graffham Down Trust work party (see page 42)	Meet at St Giles
23	Wed		Petworth Park deer rut walks (various dates till 4 Nov)	Petworth Park
			Petworth Festival Literary Week (to 3 Nov) (see page 11)	Petworth
		12.30pm	Lunch Club ²	Empire Hall
26	Sat	10-11am	Community garden work party	War Memorial
		9am-1pm	Petworth Farmers Market	Petworth
		8pm	The Regalettes comedy play (see page 30)	Empire Hall
27	Sun	2am	Clocks go back one hour	

Continued on next page

28	Mon	WSCC schools half-term (to 1 Nov)	
		Camping and Caravan site closes for winter	Graffham

¹**Great Feet foot health professional:** Available to Graffham Health Support Association members only.

²**Graffham Lunch Club** meets on the fourth Wednesday of the month at 12.30pm for 12.45pm for a home cooked two-course meal and coffee, at £9 a head. Please book via Sarah on 01798 867567.

Regular weekly activities (for notes, how to book, etc, see below)			
Mondays	9-10am	Fitflows Fitness ²	Empire Hall
	Daytime-evening	Osteopath ³	Empire Hall
Tuesdays	8.30am-12noon	Post Office	Empire Hall
	Daytime-evening	Osteopath ³	Empire Hall
	7.30pm	Bell Ringing practice - newcomers welcome	St Giles
Wednesdays	9-10am	Yoga ⁴	Empire Hall
	10.15-11.30am	Teddy Time toddler group ⁵	Pavilion
	11.15am-12noon	Pilates ⁶	Empire Hall
	1.45-2.45pm	Rusty Racquets adults tennis coaching ⁷	Rec
	6pm	Boxercise with Nina ¹	Westerlands
	7-8.30pm	Badminton ⁸ - all welcome	Empire Hall
	Daytime-evening	Osteopath ³	Empire Hall
Thursdays	Daytime-evening	Osteopath ³	Empire Hall
	10.45-11.45am	Ease Into Exercise ⁹	Empire Hall
	6-7.15pm	Yoga ⁴	Empire Hall
Fridays	9-10.15am	Yoga ⁴	Empire Hall
	9am-3pm	Physiotherapy clinic ¹⁰	Empire Hall
	evening	Tennis Club social evening	Rec
Saturdays	8am	Hard core exercise with Nina ¹	Westerlands
	10am	In motion with Gareth ¹	Westerlands
Sundays	5pm	Pickleball ¹¹	Empire Hall
	5pm	Casual football ¹²	Rec

Empire Hall: For booking and contact details, see Directory, inside back cover.

¹**For all Westerlands events:** Book online at www.westerlands.com/experiences/wild-fit

²**Fitflows Fitness:** Contact Susie Bush 07870 219956.

³**Osteopath:** Bookings required. To make an appointment, for daytime or early evening, contact Anna Shawcross on 01798 867523 or see www.annashawcross.co.uk

⁴**Yoga:** Deborah Albon on 07790 867009.

⁵**Teddy Time:** No charge. All welcome. Just come along.

⁶**Pilates:** Contact Nicky Capes on 07990 517858 or 01730 812297.

⁷**Rusty Racquets:** Contact Richard Hopp at richard@hoppecoaching.co.uk, on 07904 069457.

⁸**Badminton:** Contact Louisa Thomas, at louisa9000@hotmail.co.uk. All welcome.

⁹**Ease Into Exercise:** Contact Susie Bush 07870 219956.

¹⁰**Physiotherapy:** Contact Serena Cooper on 07884 445983 or at serenacooper.physiotherapy@outlook.com.

¹¹**Pickleball:** Contact Beanie Bradley on 07500 080417.

¹²**Casual Football:** Contact Lucas Thornley on 07767 721997.

BEAR

PETWORTH

20th Century Design, Antiques, Home Accessories and Gifts



Stockist of Santa Maria Novella, David Mellor, Leach Pottery, Kähler, Ichendorf, Villa Bologna Pottery and Kalinko.

Open Monday - Saturday, 10am - 5pm
10A New Street, Petworth, GU28 0AS

www.bearpetworth.com
Tel: 01798 651066

“This is a school that really does empower”

Tatler Schools Guide 2022

VISIT US!

Please call 01798 831456 or email:
sobrien@dorsethouseschool.com

to find out more or to make an appointment.

Independent prep school for children from 4 - 13

Morning minibuses and after school clubs

DORSET HOUSE SCHOOL

Bury • Pulborough

www.dorsethouseschool.com





T: 01483 208408
 E: office@ghinn.net
 www.ghinn.net



For over 50 years Ghinn & Co. have been helping home owners improve and extend their properties throughout Surrey and West Sussex.

Call now for a FREE, professional quotation from the experts.



Quiz answers (from page 45)

- 1 Hilaire Belloc. 2 North Street. 3 Jimmy Carter. 4 Her youngest grandchild. 5 Parkrun. 6 Jermaine Jenas. 7 Garry Richardson. 8 Herman's Hermits. 9 37th. 10 Leonard Rossiter (Rupert Rigsby and Reginald Perrin).

A small advert like this could win you lots of business from across the villages of Graffham and East Lavington at a very low cost

Contact
 ads.graffhamparishnews@gmail.com

New or upgraded system? Call us today to arrange a FREE survey



- ★ Intruder Alarms
- ★ CCTV
- ★ Entry Phone Systems
- ★ Fire Alarms

t. 03300 945596
 w. www.scorpio-alarms.co.uk
 a. Pippin Farm, Toat Lane, Pulborough RH20 1BZ



theflooringbrothers.co.uk

LET US PUT THE COMFORT BACK UNDER YOUR FEET!

Locally based carpet and vinyl fitters and suppliers

Small family business with no large overheads so we offer sensible prices, combined with a friendly personal service from start to finish

Jon: 07595 873598

Lucas: 07532 453873

info@theflooringbrothers.co.uk





**CHRIS NEVILLE
PLUMBER**

- All types of plumbing work carried out.
 - Fast, reliable, friendly.
 - Fully qualified and insured.
- 07772 040005**

Paula's Cleaning Services

Call for Quotation! 07563 722849

House Cleaning, Office Cleaning,
Deep Cleans and everything in between!



mpi
brokers

Travel Insurance

- Wintersports
- Sailing
- Beach holidays
- Up to age 100
- Single trip, multi trip, backpacker

01428 778000

retail.mpibrokers.com/graffham



FORESTERS GETAWAY
Cosy Country Cottages

B&B **Holiday rental**
Graffham village
5* Livery
07768 697427



- **Puppy Training**
- **Dog Agility**
- **Pet Gun Dog Classes**
- **1-2-1 Sessions**

Dogs Doing Better

Kilsham Farm, Petworth GU28 0LJ

www.dogsdoingbetter.com

Call Liz **07702 009272**

Or email:
dogsdoingbetter@gmail.com



- Fully insured**
- Dustless sanding**
- Free quotes**
- Interior and exterior**

07912 680750

ME CONTRACTING SUSTAINABLE LAND MANAGEMENT

- Land reclamation and repurposing
- Installing farm tracks
- Drainage
- Bulk excavation work and site clearance
- Aggregates
- Creating and restoring lakes and ponds
- Ditch clearance

hello@me-contracting.co.uk
07786 161666



Straight Line Fencing

With 30+ years' experience, we are the leading fencing and groundwork specialists in West Sussex and Surrey.

Quality workmanship assured, whether you need to keep children or horses in, wildlife out or just want security for your home.

01428 685222

s1f@straightlinefencing.co.uk

Norwood Contractors GARDEN MAINTENANCE

Grass and Hedge cutting,
Pruning, weeding,
Planting etc.....

ENQUIRIES:

01798 867 338

Or 07973 370 727



Anna Shawcross
— OSTEOPATHY —

Call Anna 01798 368078

hello@annashawcross.co.uk | 

Caytons Limited

Stuart A Hail
Specialist Oil Fired
Heating Engineer

**Boilers
Agas**

**Servicers
Breakdown
Installation**

Tel 01798 344 213
M 07779 11 33 43

Email: caytonsltd@gmail.com



MOLE CATCHING
"NO MOLE, NO FEE"
WASPS / HORNETS

CONTACT ANGUS ON 07828 134086
WWW.ASCOUNTRYSIDESERVICES.CO.UK

HOOLI.

Design | Marketing | Words | Web


01730 816484

 @hoolidesign

hooli.co.uk | hello@hooli.co.uk

Get in touch with Julia and Rachel

Nº1 West Street, Midhurst

 front.hopefully.desktops

Martin Taylor

Quality Carpenter, Joiner and
Cabinet Maker

Fully fitted and freestanding furniture
a speciality. Cupboards, Wardrobes,
Radiator Covers, Fitted Kitchens.
Design service available.

Mobile 07704-524252

Email:- martin@martintaylor design.co.uk
www.martintaylor design.co.uk

Water Pipe Repair Services

Allan Marsh

07470 440836

Water pipe repairs
Water pipe renewals
Plumbing repairs
Water leak detection
Lead pipe replacement
Drain repairs
Outside taps fitted
Sinks, baths and toilets
Driveway and footpath repairs



BOOKKEEPING SERVICES

for small business and sole traders

VAT RETURNS CIS RETURNS

SELF-ASSESSMENT

GENERAL BOOKKEEPING

Jennifer Sear MICB

Heyshott, Midhurst

T: 07834 765761

E: athenabookkeeping@aol.com



need help with your pc? Clive Way BA ^{hons} Computing

The friendly professional service for your home pc, laptop and other device nightmares.

I am now based in Wales.
But fear not –
I can still help you with
many problems by
remotely accessing your pc,
mac, phone, ipad or other
electronica.



tel: 0791 7766254

email: cliveway@yahoo.com

HELEN'S AIRPORT CARS

"With US It can often cost less than rail or airport parking"



01243 820820

Book Online Now www.airporttaxi.co.uk

24 Sudley Road, Bognor Regis. PO21 1ER



Timberscapes

Born out of a family of gardeners
and skilled craftsman

- ⊙ All hard landscaping, garden clearance
- ⊙ Site/garden clearance
- ⊙ Ground works & site levelling
- ⊙ Garden walls & raised planting beds
- ⊙ Paving, decking, wooden structures
- ⊙ Fencing and edging

07913 118780

greg@timberscapes.co.uk

Jane Bellinger

Professional Cordon Bleu Chef
Dinner Parties Luncheons
Weddings Canapes
Picnics Buffets
Afternoon Teas Desserts

info@janebellinger.com

www.janebellinger.com

St. Anne's Cottage, The Street,

Bury, RH20 1PA

Tel 01798 839433

Success

No greater gift



Maths tutoring

11+, 13+, Scholarship, GCSE, A Level, IB, Pre-U

www.escry.com

simon.mitchell@escry.com 07850 125 519

CARPET & RUG DRY CLEANING
UPHOLSTERY & CURTAIN CLEANING
STAIN PROTECTION

TEL: 01730 814 965

www.magnadrysouthern.co.uk



MAGNA DRY SOUTHERN

Free Estimates ~ Fully Insured

Matt Wheatley Local electrician

Part P approved contractor

Fully insured

For prompt and friendly
service, please call

07976 465974

or email

mattwheatley1971@btinternet.com



SERENA COOPER

PHYSIOTHERAPY

SPECIALIST MSK PHYSIOTHERAPIST
MSC, HCPC, MCSP

Friday Physiotherapy Clinic
Graftham

Low back pain/ sciatica

Neck pain

Joint pain

Muscular aches and strains

Sporting/ligament injuries

Chronic pain

Home visits available

For more information please get in touch on:

0788-4445985

serenacooper.physiotherapy@outlook.com



Graffham Based Taxi Service

PRE-BOOKED LONG DISTANCE JOURNEYS



• PLEASE CALL, TEXT OR EMAIL FOR A QUOTE.
• 24 HOUR SERVICE AVAILABLE BY PRIOR ARRANGEMENT.

07467 521 760

pescadorashire.co.uk
pescadorasprivatehire@gmail.com



Prompt and Friendly
Telephone Fran or Dean on

07768 986 338

Based in Lickfold
Est. 1990

prismwindowcleaningltd.com



Roger Poat & Partners Funeral Directors & Monumental Masonry Consultants

Duck Lane, Midhurst, West Sussex GU29 9DE

Telephone 01730 812094

(24 Hours)

- Pre-need Funeral Plans
- Private Chapel

Email: info@rogerpoat.co.uk

Michael Miller & Partners Ltd

SMART CARS

PRIVATE HIRE / TAXI SERVICE

Executive Saloon and Chauffeuring Service

Professional, Personal, Reliable

Same Day Courier Parcel Service

For quotes and bookings call Dominic

07823 559099

email: smartcars@fiscali.co.uk

Card payments accepted

Established Midhurst 2006



THE MARTIN SEWELL
BUILDING COMPANY

An award-winning Chartered Building Company that has worked in the Sussex area since 1985, gaining a well-deserved reputation for professionalism, reliability, high quality craftsmanship & project management skills.

Experienced in all types of building projects, from large commercial to the sensitive renovation of listed buildings, bespoke new-builds or extensions & refurbishments.

Telephone 01243 542056
Email martin@msbc.uk.com
www.msbc.uk.com



SUSSEX LAND WORKS

Ground Work, Driveways, Patios, Paving,
Drainage, Concreting, Tarmacing,
Water Pipe Repairs and Installation
and more

info@sussexlandworks.co.uk

01730 814751

07950 035997

www.sussexlandworks.co.uk

Directory: Useful local contact info

DOCTORS		Petworth Surgery	01798 342248
		Midhurst Riverbank Medical Centre	01730 812121
		Haslemere Minor Injuries Unit	01483 782334
DEFIBRILLATOR		On wall outside Empire Hall	Code is C240Z
FLOOD ALERT for Lods Bridge		To check river level	bit.ly/lodsbridge
POLICE		In emergency	999
		Non-emergency	101@sussex.pnn.police.uk 101
BURST WATER MAINS		Southern Water	0800 820 999
POWER CUTS		Scottish & Southern Electric	0800 0727 282
99 FLEX BUS		Linking Graffham with Chichester, Petworth etc	01243 858854 bit.ly/99flexbus
All Saints Chapel Trust	Chairman	Clive Rowntree	01798 867536
Badminton		Louisa Thomas	louisa9000@hotmail.co.uk
Bees / Swarms			
	Wisboro' Green B'keepers	Tom Moore	07984 606214/01798 343470
	Local beekeeper	Murray West	evenings 01798 867048
Chichester District Council			01243 534734
	District Councillor	John Cross	jcross@chichester.gov.uk 07592 307027
	Dog Warden	Office hours	01243 534734
		Emergency	01243 785339
Citizens Advice Bureau			03448 487969
East Lavington Parish Council	Chairman	Charles Britton	charles.britton@eastlavington-pc.uk
	Clerk	Amy Harte	07889 979820 eastlavingtonpc@gmail.com
Empire Hall		empirehall.org.uk	empirehall@gmail.com
	Chairman and Bookings	Sally Blunt	bookings.empirehall@gmail.com
	Treasurer	Carole Sargent	01798 344790
	Maintenance	Gillian Charlesworth	empirehall@gmail.com
Foodbank		info@chichester.foodbank.org.uk	01243 773687
Foresters Arms		forestersarms-pub.co.uk	01798 867386
Graffham Archive	Robin Brind	graffhamarchive@outlook.com	01798 867619
Graffham Bellringers	Tower Captain	Howard Pescott	01798 867029
Graffham Bowls Club	Chairman	Sheila Allen	01798 342869
	Secretary	Liz Pegram	01798 867770
Graffham Cricket Club		Bill Barrett	01798 867113
Graffham Down Trust	Chairman	Jim Kirke	01798 867026
Graffham Garden Group		Carole Kirke	01798 867026
Graff'm Health Support Assc	Chairman	Sarah Lydiard-Wilson	01798 867567
	Membership	Tracy Rowe	07881 698993
	Transport		07391 802541
	Prescription collection	Ann Rowney	ann.rowney@icloud.com
	Loan of equipment	Karin Skanberg	07920 091014

Graffham Lunch Club		Sarah Lydiard-Wilson	01798 867567
Graffham Nursery		School Office	01798 867324
Graffham Parish Council	Chairman	Roger Coakes	roger.coakes@graffham-pc.uk
	Clerk	Caroline Davison	clerk@graffham-pc.uk
Graffham Parish News	Editorial and circulation:		editor.graffhamparishnews@gmail.com
	Advertising:		ads.graffhamparishnews@gmail.com
	See also bottom of inside front cover		
Graffham with Woolavington Parochial Church Council			stgilesgraffham.org
	Priest-in-Charge	Rev Vivien Turner	01798 867199
			hallo@stgilesgraffham.org
	Churchwardens	Ginny Barrett	01798 867113
		Cindy Bradley	07787 516522
	Acting Treasurer	Ginny Barrett	graффhampctreasurer@gmail.com
Graffham Rec Committee	Chairman	John Bracey	01798 867760
	Treasurer	Bernard Bayly	01798 867042
	Bookings Sec	Sonya Gillespie	graффhamrecpavilion@gmail.com
Graffham Tennis Club	Chairman	Simon Longman	01798 867317
	Membership	Richard Gyles	01798 867484
	Coaching	Emma Amin	01798 867063
Graffham Village Shop		Jeeva and Vasu	01798 867700
			graффhamvillageshop.co.uk
Graffham Vill'ge Shop Assoc	Chairman	Steve Dover	07770 499223
	Treasurer	Andy Jones	andy.jones@graффham.net
	Secretary	Ros Britton	rosalind.britton@btinternet.com
			07971 142252
Katherine Maud Guillod Fund		c/o Graффham PC Clerk	graффhampc@gmx.co.uk
Lavington Estate		info@lavingtonstud.co.uk	01798 867275
Lavington Park Federation			graффhamanddunton.w-sussex.sch.uk
	Graффham CE Infant School		01798 867324
	Dunton CE Junior School		01798 342402
	Friends of Graффham & Dunton Schools		01798 867324
Long Bostle Downland Soc		Gillian Brandt	01798 867276
MP Arundel & South Downs		Andrew Griffith	andrew.griffith.mp@parliament.uk
Midhurst & Petworth Observer		Nikki Jeffery	01243 534163
National Trust (Lavington Common)			01730 816638
Neighbourhood Watch		Michael Crickmay	01798 867486
Osteopath		Anna Shawcross	01798 867523
Oil Buying Syndicate		Derek Bradnum	derekbradnum@gmail.com
Petworth Food Bank			07501 921617
Pilates at Empire Hall		Nicky Capes	07990 517858
Seaford College			01798 867392
Three Moles		Ollie and Tom	thethreemoles.com 01798 861303
Thursday Club	Secretary	Diane Bellis	01798 867444
West Sussex County Council		General enquiries	01243 777100
	County Councillor	Tom Richardson	07463 785039
White Horse		whitehorsegraффham.com	01798 867331
Yoga at Empire Hall		Deborah Albon	07790 867009

