

GRAFFHAM PARISH NEWS

ISSUE 405

FREE

NOVEMBER 2024



Restoring nature to Lavington Estate
Get set for our Christmas Fair
Play area readies to re-open this month



Graffham Parish News is published and distributed free each month to every household in Graffham and East Lavington by the Parish of Graffham with Woolavington.



Please support us If you enjoy reading this magazine, then please make a contribution towards its costs through a monthly or one-off online donation – just point your phone camera at this QR code or go to bit.ly/GPN-donation



Archives Back copies can be viewed online at bit.ly/stgarchive1

Subscriptions If you live outside the parish, you can receive copies by mail by taking out an annual subscription for £36. Contact the editors for full details.

Advertising We love our advertisers! If you are interested in being one of them, please contact Philippa Sanders (below) or email ads.graffhamparishnews@gmail.com

Copyright All content is © *Graffham Parish News* unless otherwise stated and may not be reproduced without the editor's written consent.

On the cover: This stunning picture of a barn owl perching on a post at Lavington Stud and Estate, taken by Anthony Hurren, is a symbol not just of Halloween but also of the progress being made to restore nature to the 600 or so acres of pasture and woodland at the heart of our community. See pages 15-19 for more.

Contributions and contacts We're always pleased to hear from you at editor.graffhamparishnews@gmail.com

- Michael Blunt (right) 07711 997487
- Bill Barrett (left) 07443 501091
- Philippa Sanders 07853 921825

Deadline for December edition
10 November.

Printed by Parish Magazine Printing, Holsworthy, Devon EX22 6TD.

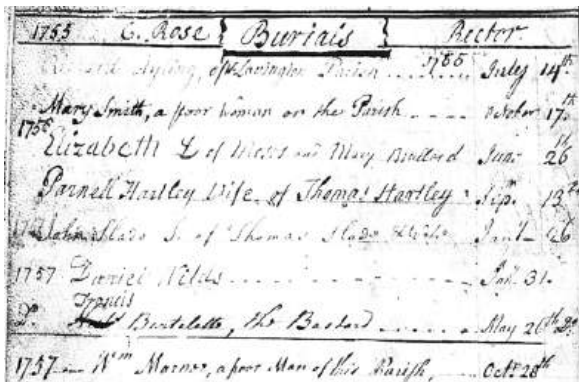


Writing from the Rectory: Resting in peace

November is that time of year when nature closes down, and we close down a bit too, hiding ourselves away from grey skies and cold winds, short days and too much rain. In this sombre mood of reflection, I find my thoughts turning to the funeral ministry of the church. Many, many people have been buried around the church of St Giles over the centuries. We have burial records going back and back, telling us names and where they lived and what they did. If we go back far enough in time, we find the great majority didn't have marked places or headstones identifying them. Being known to God and named in the registers was considered quite enough.

When another person needed to be buried in the same place, that was fine. Any revealed bones were just replanted in the earth. Occasionally one finds churchyards which still have charnel houses. These stored unearthed skulls and femur bones, the only

► *Continued on next page*



Old registers for St Giles, held at West Sussex Record Office, list the names of those buried at in our churchyard in years gone by. This extract from the volume covering the mid-1700s records the burial of, among others, Mary Smith, "a poor woman of the parish", Francis Bartelette, "the Bastard", and William Marner, "a poor man of this parish". The tomes are full of names familiar to villagers today – Boxalls, Challens, Hiltons, Pescotts, Wests and more.



Priest in charge: Reverend Vivien Turner
hello@stgilesgraffham.org 01798 867199

Churchwardens: Ginny Barrett 01798 867113
Cindy Bradley 07787 516522

Safeguarding Officer: Howard Pescott
01798 867029 safeguardinggraffham@gmail.com

 stgilesgraffham.org  @stgilesgraffham

▶ *Continued from previous page*

part of a skeleton considered necessary to secure resurrection. You may think the skull and crossbones is a sign of piracy. It is, in fact, a symbol of resurrection.

There came a time when a person died they were given their own dedicated grave in a churchyard, and churches began to keep plans showing where each grave was, as not everyone was given a headstone by their family. We have no grave location



Graves in St Giles' churchyard extension may soon be mapped on a new database.

plans associated with the closed churchyard around St Giles Church. However, for the churchyard extension across the road, consecrated in the late 19th century, we have several, some clearer than others, it has to be said, though very conscientiously being kept now. These are held in the parish filing system to be drawn on and updated when a new burial takes place, but are not readily accessible to people generally. A plan of graves can also be found on the noticeboard in the churchyard. However, as this is based only on headstone information it is not comprehensive and becomes quickly out of date.

To find out who's entitled to be buried or have a funeral at St Giles, see page 47

Subject to approval of our Parochial Church Council (PCC) and resolution of technical complexities, a new online record of churchyard extension burials will soon be available on our church website stgilesgraffham.org and via QR code on our churchyard noticeboard. We hope this will be a helpful source for people seeking to discover if, and if so where, their relative is located here. Great thanks are extended to Jonathan Simons for his work in compiling this resource, and to everyone working at present to bring it to life.

May all who are recorded there, rest in peace and rise in glory.

Enjoy a peaceful November.

Reverend Vivien

Drivers asked to show respect on Poppy days



A commonwealth war grave in St Giles' churchyard marks the resting place of Sidney Paull, who served in World War I. He will be one of the many fallen from our village who will be remembered at the Poppy Day services at the War Memorial.

In line with Graffham tradition, motorists are being asked to avoid driving past the War Memorial during the Remembrance Service on Sunday 10 November and Armistice Prayers on Monday 11 November, which will be held there at 11am.



Although there will be no formal road closure in force, marshals will be out to encourage vehicles to detour between Graffham Village Shop and the 'Pound' junction.



Villagers gather at the War Memorial for a recent Remembrance Sunday service.

Has the village's power supply been fixed?

October 2024 will go down as the month when much of the village suffered frequent intermittent cuts in their electricity and broadband supply – setting Facebook's Graffham Noticeboard alight with angry posts. For several weeks, many homes lost power on multiple occasions a day, usually for just a few seconds or minutes at a time but still requiring many devices to be reset each time. Scottish and Southern Electricity was confident it resolved the problem by replacing a transformer component after an outage of several hours on the evening of Tuesday 8 October. The broadband failure occurred just once, and despite BT OpenZone warning it could take two weeks to fix, was quickly restored in a matter of days.

Praise from our peers for your *Parish News*

Graffham Parish News has received glowing praise from the judges assessing parish magazines from across the country for the Association of Church Editors – but they declined to give your favourite village monthly news magazine an award as they considered it features only “minimal content on the Christian message”.

In their assessment, though, they described it as “an exceptionally well produced and interesting magazine, extremely appealing with loads for the community. We would certainly be thrilled to receive it every month!”

They added: “It is a very attractive magazine visually, with a great front cover – lovely pictures of people, consistent design and with a bold title. Inside, it has great headlines, including some imaginative ones, which not many editors manage. Use of graphics is wonderful, with lots of lovely, well placed, high resolution photos with captions and not cluttered with twee clip art.”

Our MP visits Selham farmers – and Heyshott



John Hancock’s Hurlands Farm at Selham hosted a ‘Farm to Fork’ summit for our MP Andrew Griffith with 30 farmers from across his Arundel and South Downs constituency this harvest season. Andrew, pictured holding the sign above, said: “Farmers are the lifeblood of our countryside. They put food on our tables, conserve the environment and make an invaluable contribution to our local economy. These summits give me an opportunity to hear directly from farmers to understand what is going well, what isn’t, and how I can help.”

Andrew Griffith MP will be in the hot seat at Heyshott’s Cobden Hall on Thursday 14 November at 7pm to give an update on his key issues of the moment and to take questions from the audience.

Play area readies to reopen on 23 November

The team behind Graffham's new play area are aiming to open it on Saturday 23 November, with a formal 'ribbon-cutting' at 10am after three months of renovations costing tens of thousands of pounds. Its new equipment, made from sustainably sourced natural materials by Elsted-based Playsafe, was scheduled to be installed from the end of October.

Work on the upgrade finally got underway in mid-August after a 'donation in kind' by Glen and Asta Manchester, in the form of the loan of members of the workforce rebuilding their new home at Selham House to carry out the ground works. That significantly bolstered Graffham Parish Council's £20,000 pledge from



This drone photo shows the new play area ready to receive its new equipment.

its Community Investment Levy fund towards the initial project target total of £50,000. Topping that up have been generous financial gifts from individuals – plus £1,000 from Graffham Festival.

The old playground equipment was dismantled and cleared away with items that could be renovated sent away for some TLC. Groundworks were then set in motion

You can contribute towards the new playground via its page by scanning this QR code (right) with your Smartphone camera. Or type gofund.me/546c06a7 in your web browser. As a charity, the project is eligible for Gift Aid, which adds 25 per cent to everything you donate – so please add this if you are a UK taxpayer. Any funds collected beyond the target will go towards more equipment and its on-going maintenance.



to enable the new paraphernalia to be fitted after laying woodchip on the ground. A new fence has been erected to replace the old one that had been taken down. The focus now is on raising further funds to enable all the play area's spaces to be filled with new equipment.

Project team lead Rachel Gerrett said: "I can't wait to get the milestone of re-opening behind us and see the play area being used and enjoyed again after so many people have worked so hard for so long on the project. Huge thanks to Mr and Mrs Manchester and all who have helped – but now is not the time to ease off the gas as we are still short of what we need to complete everything."

School report: Nearly time to say goodbye

Helen Martin reports on some of the latest highlights at Graffham Infant and Duncton Junior Schools – her last term as their head teacher before she retires at the end of term and embarks on her new career as a celebrant.



We have had a very exciting few weeks with our start back to school, welcoming 11 new Reception children to Wren Class. We celebrated harvest in both schools, and our donations were taken to Stonepillow in Chichester. Thank you to our school parents for their generous contributions. Thank you too to Rev Vivien for



her service at school and to our class teacher Mike Lloyd for teaching the children some beautiful hymns to sing, including a lovely rendition of *We Plough the Fields and Scatter*.

We have spent a lot of time outside on our Wild Wednesdays, learning about the outdoors and our local area. We are collecting beautiful autumn colours at the moment in our autumn display and have seen some amazing leaves!

Rev Vivien visits Graffham Infants School at harvest time.

We have spaces at both of our schools, so do get in touch if you would like to visit. If you are interested in looking around either of our schools, please ring the offices on 01798 867324 (Graffham) or 01798 342402 (Duncton) to arrange a visit.

From January, I am beginning a new career as an independent professional celebrant and hope to meet many of my school families again through my new role. The values of compassion and kindness run through our Graffham and Duncton Schools – and I will now look forward to bringing these to ceremonies for families at the most important points of their lives. You will be able to keep in contact with me through my new website www.helenmartincelebrant.co.uk

If any current or past staff, students, parents, governors or members of the community want to come to say goodbye before I move on, the schools are having a farewell event on Monday 16 December 5-9pm in Duncton School Hall. Everyone is welcome.

A helping hand for the hard-up at harvest time

The homeless and those struggling to make-ends-meet in the face of the cost of living crisis were given support from Graffham at harvest time.

Almost 25 full bags and boxes of donations of packaged and tinned goods from Graffham Infant School, Duncton Junior School and St Giles Church's Harvest Festival Service were delivered to Stonepillow for the homeless people supported by the Chichester charity.

On Sunday 6 October, dozens attended the village's Harvest Lunch at the Empire Hall, donating £150 in cash for the Chichester Foodbank, covering also Midhurst, Petworth and surrounding villages – which one generous and kind donor matched, making the Graffham contribution £300 in total. Besides tucking into a wide array of 'bring-and-share' dishes, the youngsters attending took part in a number of children's activities.

Rounding things off, the village's bakers donated 22 fruit crumbles to Stonepillow in the annual Crumblethon operation – down on our all-time record of 35, but still a highly respectable total of delicious home-cooked desserts.



Crumblethon organisers Jan Brind (left) and Ann Brown take a car boot full of delicious fruit crumbles to Stonepillow.



Harvest diners sample the bring and share delights in the Empire Hall (left), while the youngsters work off all those calories.





NESTLED IN THE HEART OF THE SOUTH DOWNS

T: +44 (0)1798 867331
E: INFO@WHITEHORSEGRAFFHAM.COM
W: WWW.WHITEHORSEGRAFFHAM.COM
@WHITEHORSEGRAFFHAM

Mina gives Empire Hall a dose of *Strictly* fever

The Empire Hall is hired for all sorts of different purposes – but one of the more unusual, as the nation catches its annual dose of *Strictly* fever, was for the filming of an Argentine Tango dance routine. The booking was made by Mina Blair, who lives in Midhurst but visits weekly for yoga classes run by Debs Albon at Graffham’s ‘Grand Old Lady’. She wanted to be filmed strutting her stuff with her dance instructor Flavio de Brito, in her own personal *Strictly Come Dancing* challenge – she’s a self-admitted huge fan of the hit BBC1 television show.

She explained what lay behind the project: “I wanted to see if I could actually have my own *Strictly* experience by learning a dance routine and performing it – in tribute to a dear friend, Sarah Cox, who died last year of cancer. We shared a love of dance, and it was Sarah who gave me vouchers for private lessons with Flavio as a Christmas present before she passed the following March.”

Mina started training with Flavio – who runs classes in Chichester, Guildford and Portsmouth (tangowithflavio.co.uk) – in January last year. She said: “I just love the physicality and the intensity of this dance.”

It took almost two years for her to master the steps sufficiently to call on Sarah’s nephew Daniel McGregor, who works for a film production company in London, to capture their *Strictly* show performance, to the music of *Sway*. Besides this amazing photograph, you can see a video of the dance at empirehall.org.uk – just scroll to the foot of the page. Mina smiled: “The feeling I would like to convey with my video is joy – and to remind people that they can achieve anything if they put their mind to it!”

If you’d like to follow in her footsteps, the Empire Hall is hoping to offer dance classes soon – watch this space! It’s also available for all sorts of other private events – parties, indoors sports, you name it. See contact details inside back pages.



JOANNA COOKE

Saturday 16th of November 8.00pm
Empire Hall, Graffham GU28 0QB



"..a voice that drips with soul. Joanna takes a song and layers it over you like warm honey until it floats you away"
Dart Music Festival

Tickets £12 from www.empirehall.org.uk
Doors and bar open 7.30pm

Drinks business brewed up here is aiming high

A new drinks business aiming to become a major force across the UK launched in late September – born here in Graffham. Maharaja Drinks is the brainchild of Ipe Jacob, of Nonnington Lane, and his son Adam.

It aims to springboard India as the next global drinks powerhouse by acting as a major shopwindow and distributor for the subcontinent's growing band of high-quality producers of not just teas and beers but also wines



Some of the bottles Maharaja Drinks is offering.

and spirits. India is already the third largest market worldwide for alcoholic beverages, spurring local manufacturers to up their game in recent years. Ipe and Adam have traversed the sub-continent to handpick the very best in wines, beers, spirits, teas, coffees and soft drinks for UK consumers to buy online and for the Indian hospitality sector here. They have already signed-up some of Britain's best known high-end Indian restaurants, like London's Cafe Spice Namaste.



Ipe (above)
and Adam
Jacob.

Their wines range from high-quality rich reds to zingy whites and a special selection of fancies like blended tropical fruit wines and delicious kombucha. Spirits include single malt whisky, rum, gin and vodka. Teas range from earthy greens to floral blacks, with coffee grown in the hill country and roasted in Bangalore.



Ipe said: "Our mission is to shake up what UK drinks enthusiasts understand of both India and its rich array of crafted drinks. We know that rapidly rising quality standards, improvements to the regulatory frameworks and reduced tax burdens on alcohol businesses in India have all driven a rise in entrepreneurship and start-ups in its domestic market, opening up doors for this new dynamic wave of disruptors in the UK beverage market."

You can see what Maharaja Drinks has to offer at www.maharajadrinks.com

Thursday Club 'heads' to Westerlands after AGM

Graffham's Thursday Club holds its AGM on Thursday 14 November at 2pm in the Empire Hall, when payment of its annual subs (still just £12 a year) are due – followed by a talk on the Westerlands Estate by Antonia Jamieson.

Concorde set to 'land' in Graffham again

Concorde is set to 'land' in Graffham again in the new year after the supersonic aircraft's 'visit' to the Empire Hall on Friday 4 October was completely sold out, with a queue for any returned tickets and more than 90 on the event's waiting list. A date for its return – likely in early March – will be announced soon. Those who applied for but were unable to buy tickets for October's event will be given priority



to book, then Graffham residents – before it is opened up to those from further afield.

October's first 'flight' raised almost £2,500 for St Giles Church. The next event will be in aid of the Empire Hall.

Like the first event, next year's evening will centre on an illustrated talk by former British Airways Chief Concorde Pilot Mike Bannister, featuring videos and photos from his private collection and sharing his unrivalled insight into the most iconic aeroplane to take to the skies. He knows Concorde better than anyone – starting as its youngest first officer soon after it started operating in 1977 to commanding its final scheduled flight as British



Sunday Roast 3 courses £25



Come and enjoy our Sunday Roast, served 12-3.30 every Sunday

With a mouthwatering choice of meats including Graffham Venison along with vegetarian, vegan and gluten free options, served with 10 different vegetables, Yorkshire pudding and our delicious gravy.

Booking is essential

thethreemoles.co.uk

01798 861303

Airways' Chief Concorde Pilot 26 years later. He's since become the best-selling author of the definitive Concorde book – and an in-demand and entertaining speaker. He was introduced by *Graffham Parish News* editor Michael Blunt – another Concorde veteran as head of communications at British Airways during much of its supersonic era and as the airline worked to restore Concorde to service when it was grounded after the Air France crash at Paris in July 2000.

To complete the Concorde feel, the event was preceded by a hilarious safety briefing by cabin crew in uniform – Sue Hill, Sally Blunt, Rich and Holly Sabin and Mike Bannister's wife Chris, herself a former Concorde cabin services director.

Besides the usual bar and raffle, there were snacks served from an actual in-flight trolley, bottles displayed in a genuine Concorde wine cooler and a range of other memorabilia to gawp at.

Mike Bannister is an honorary Graffhamite. Besides being a long-term former colleague of Michael Blunt, he and his wife Chris are best friends with John and Sue Hill, of Graffham House, regularly staying with them. He kindly offered to front the event in aid of St Giles – and the next one in support of the Empire Hall.

The 125 attending the October departure, a capacity audience for this kind of event at the Empire Hall, were raving in their reviews. “An absolute tour de force in every respect,” said one. “What an excellent and fascinating evening – brilliant, informative and amusing,” wrote another. “A triumph – well organised and interesting throughout,” gushed a third.



'Cabin crew' perform the safety briefing ahead of the sell-out Concorde evening in aid of St Giles at the Empire Hall on Friday 4 October, from left: Michael Blunt (at the mic), Sally Blunt, Holly and Rich Sabin, Sue Hill and Chris Bannister.

Sue's latest book will make you *Wild and Free*

Graffham artist and author Sue Hill is publishing another book – just in time for Christmas – this time focussing on how to make the most of the wonderful goodies that can be foraged in the fields, hedgerows and forests locally. Like her previous books, all proceeds from *Wild and Free* will be gifted to St Giles Church.

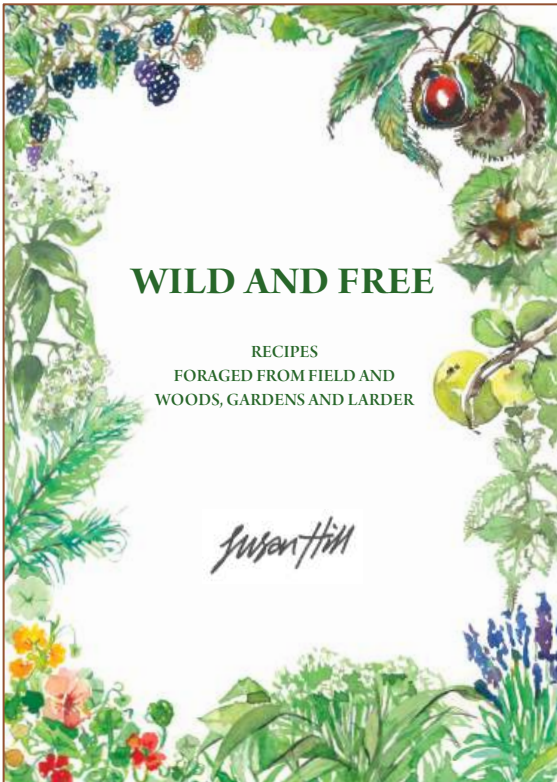
In its preface, Sue explains what gave her the idea: “Fingers red stained and boots caked in mud, I returned from picking the last of the blackberries and had a ‘lightbulb moment’. So many years enjoying free food made me want to share what I had picked up and learned. A new adventure began, and this little book is a collection of old and new discoveries to enjoy and to improve your country walks.

“As an inveterate daily dog walker, I love viewing the seasons change inexorably but in small ways. It’s a joy to find the first spring leaves and shoots and then summer warmth bringing berries ripening and wayside goodies ready for collecting. Autumn is a feast of choices but storage is a must for the wintertime.”

She adds: “This book is full of ideas for the forager and proves wrong those who say there is no such thing as a free lunch. There is something innately joyful about finding free food amongst the simplest and most common wild plants.

“Just one caveat – always be generous to nature and make sure to leave seeds and plants to thrive for next year when collecting.”

Like her other books, *Wild and Free* is lavishly illustrated with Sue’s beautiful paintings and drawings. With 36 A5-sized pages, it will cost £15. You will be able to buy copies at Graffham Christmas Fair, from Graffham Village Shop and St Giles Church or directly from her. To order a copy, please email her at jonsugraffham@btinternet.com





Touching down just in time for Halloween

Photographer Anthony Hurren © was out with his gear as October broke to take some pictures of the wildlife that's making a return to Lavington Stud and Estate when he spotted this barn owl touch down on a fence post close by – resulting in this astonishing picture, on the cover of this edition. It is so clear that you can easily read the markings on the ring around the bird's ankle – which had been placed there when it was younger, near Burton Mill Pond. The self-same owl is pictured then (right) with South Downs Park volunteer Maddy Matthews.



organisations that could effect change. So she set up her own network of women who might be willing to help to fix the planet. And when, in 2020, one of them, the ecologist Antoinette Vermilye, noticed that, of UK's COP delegates, not one was female and "governments and leadership didn't understand the relevance of why it was important", they wrote a letter calling for a 50-50 split of men and women in the COP27 leadership team. SHE Changes Climate was born.



The Lavington Stud and Estate encompasses some 600 acres of pasture and woodland.

Having women at the table, she explains, is important not only because they make up 50 per cent of the planet and still only a quarter of the world's parliamentarians – but also because it is women who are disproportionately impacted by climate change. In most parts of the world, women are still responsible for children, food, water and looking after the elderly. So when drought comes, or cities are flooded by rising seas, they bear the brunt of calamitous conditions – particularly in the global south "where they not only have the extreme weather, but they don't have the insurance we have, the social security of a proper roof. So they are not prepared at all for the terrible effects of climate change".

Having these under-represented women at the table completely changes policy-making, Bianca says. Nations with more women in parliament are more likely to take action on critical environmental issues, adopt more stringent climate policies and have lower emissions. And given the rate at which our planet is heating up, we need those sorts of changes fast. "And that's not going to happen until we have women in the mix... taking down the old world is hard for men, as they built it." What our planet needs is a 50-50 leadership of men and women, she says. "If you were going to sail seas, you want full vision – particularly if you are navigating choppy waters. Not having women in the room is like having a blind spot. You only see half the world."

Interested in being a Lavington youth advisor? Lavington Estate wants to form a Youth Advisory Group – Gen Zs with a passion for nature and well versed in the digital/social media world. Anyone interested should send their CV and a short accompanying letter outlining their motivation to info@lavingtonstud.com

Nature Notes: Not what they seem

A regular column by Sussex naturalist and wildlife guide Michael Blencowe, who can regularly be spotted in and around Graffham.

Once upon a time we were terrified of tawny owls. They were a portent of evil in fairytales, folklore and just about every scary story, film or poem that needed a creepy cliché. But in today's crowded marketplace of climate change, artificial intelligence and Donald Trump, the owl's powers to scare us are fading. Recently it appears this spokesman of the supernatural has got itself a new publicist. Its modern image is one of a cuddly pin-up, more Harry Potter than Hammer Horror.

But stand in the woods on a moonlit night and listen for an unseen owl's ethereal call. It's an ancient, unnerving sound that still speaks to something buried deep within us – and ignites a primeval fear.

The tawny owl is the largest and commonest of our island's five owl species typically nesting in holes in old trees in our remaining woodlands. But what is it about this bird that has given us the willies throughout history? Let's start with those huge, lifeless black eyes that seem to stare into your very soul. An owl's eyes

Work parties 2024-25

Join us for some outdoor fun and exercise after which you can feel virtuous for having done something positive for your environment! Did we mention that coffee, tea and cakes are provided?

Meet at **Graffham's St Giles Church at 9.30am**. You'll need a pair of gloves, strong shoes or boots and warm clothing. Please email jimkirke@hotmail.com if you plan to come along and say if you would like a ride up so that he can arrange transport.



23 November		Saturday	
15 December	Sunday	1 February	Saturday
5 January	Sunday	15 March	Saturday

are not spherical but tubular like two telescopes and give amazing vision at low light levels. However, the eye's stretched shape and position on the owl's face presents a narrow field of vision. To compensate a tawny owl has special bones and blood vessels in its neck so it can perform that freaky, Exorcist-like head twist. This gives the bird the ability to scan all around without having to move its body and arouse detection by prey. And, in the world of a nocturnal hunter, silence and stealth are everything. Special serrated feathers slice the air allowing it to fly as silently as a phantom and aerially ambush its victims. Incredible hearing achieved by asymmetrical ears allows it to pinpoint the rustle of a nervous vole below. It can hear fear.



A tawny owl in flight (above) © Peter Brooks Sussex Wildlife Trust and perching on a branch © Wayne Turner, also SWT.

And then there's that disembodied voice arising from the darkness. The male's far-carrying baritone 'hoo-huhuhuhoo' and the female's squawky 'kerr-wik' response are like a mis-matched duet between Johnny Cash and Janet Street-Porter. These calls help establish, maintain and defend a breeding territory and from October the birds are at their most vocal.



Of course, tawny owls really couldn't give two hoots about scaring us but throughout history these spectral calls have provided a soundtrack to our deepest fears. In a society which is becoming increasingly detached from nature, it's time to get out into the woods after Halloween and allow ourselves to be unsettled once again by these mystical birds.

- You can find details of Michael's upcoming events, wildlife sightings and adventures or book him for a wildlife survey of your garden or land at:



michaelblencowe.com

Planning applications and decisions

Details for Graffham and East Lavington filed with the South Downs National Park as we went to press (for details, see bit.ly/sdnp-planning)

Proposal filed for renovating Nonnington Hall

Plans for renovations and extensions to Nonnington Hall, one of Graffham’s biggest houses, have been submitted to South Downs National Park and Chichester District Council. They include the proposed replacement of a two-storey extension on the north side along with the construction of a new single-story extension on the south and another to the side with some reconfiguration of the interior. Externally, rendering would be replaced or added over the elevations, new windows fitted and current ones replaced and new dormer windows added on its southern side.

Nonnington Hall was bought in 2021 by Emma Wallace, who has since brought the farm there back to life. Besides the hall and farm, the grounds include Eldridge House and Peters Farmhouse, opposite the White Horse. Since then, it has been expanded to include the Malthouse, opposite the Foresters Arms, and The Cottage, across the road from the Empire Hall.

When it was offered for sale three years ago, *Country Life* described Nonnington Hall as “a treasure trove of charming details, from original fireplaces to elegant



Nonnington Hall’s south and eastern elevations, as seen in its 2021 sales brochure.



Architects' drawings filed with the planning authorities show how the proposed changes to Nonnington Hall (in black and white, left column) would compare with

the current building
(in colour, right side)

- from the north
(top), east (centre)
and south (bottom).



cornicing, leaded windows, panelled walls and a stained glass window on the first-floor landing". The magazine added: "The *pièce de resistance* is the aptly-named Great Hall, which was created in 1937 as a ballroom, but there also are a 26'5" dining room, a sundowner bar and, up the grand staircase, ten panoramic bedrooms, including the master suite with private sauna." Dating originally from the 16th century, the building was heavily remodelled in the Victorian and Edwardian eras.

Under the planning application posted on 23 September, its upper storeys would be reconfigured to feature seven bedrooms, each with its own en suite bathroom, while the downstairs would be remodelled to provide seven seating areas.

Emma said: "It's been decades since Nonnington Hall benefitted from serious attention. It's got cracked windows and is drafty and damp. All in all, it's in much need of some tender loving care, which is what I want to give it, while respecting the history of this wonderful building."

Nonnington Hall, Nonnington Lane, Graffham GU28 0PX: Extensions to include porch, 4 no. dormer windows, 2 no. rooflights and roof lantern. External alterations, entrance gate and fence. *SDNP/24/03694/HOUS. Received 6 September.*

More planning applications and decisions on page 23



Simply
Windows
& Doors

We supply and install:

- » uPVC, aluminium and composite windows and doors
- » aluminium bi-fold doors
- » aluminium slide and swing doors



BB

A fantastic product, expertly fitted and the whole project was finished with great care.

Mrs W, Midhurst



GET IN TOUCH » call 01730 601340 / 07454 660770
info@simplydoorssouthern.co.uk / simplydoorssouthern.co.uk

Other planning applications

Red Oak, The Street, Graffham GU28 0NP: Extensions to include porch, 4 no. dormer windows, 2 no. rooflights and roof lantern. External alterations, entrance gate and fence. *SDNP/24/03694/HOUS. Received 6 September.*

Denham, Graffham Road, East Lavington GU28 0QF: Erection of front and rear porches and single storey rear extension. *SDNP/24/04120/LDP. Received 7 October.*

Seaford College, East Lavington GU28 0NB:

- Proposed addition of an indoor cricket lane, golf lane and two new teaching classrooms and office to the rear of the existing sports hall. *SDNP/24/03879/CND. Received 20 September.*
- Discharge of condition 12 (Lighting) from planning permission *SDNP/23/00805/CND. SDNP/24/03684/DCOND. Received 6 September.*
- Identical replacement of a window and dry lining to internal walls (Archive room on lower ground floor). *SDNP/24/03620/LIS. Received 2 September.*

Planning decisions

Planners at South Downs National Park and Chichester District Council have approved proposals to extend and alter The Priory, Selham Road, Selham, including demolition of its existing rear glazed conservatory, construction of new extension and changes to windows and, separately, for the erection of an L-shaped block of nine stables at The Paddocks, Selham Road, South Ambersham.

A bid to install temporary caravan accommodation at Middle Barn, Smokyhouse Lane, Graffham, has, however, been turned down.

Campsite pitching for festivals and weddings

A new campsite is being opened at Halfway Bridge, immediately to the east of the Halfway Bridge Inn. The two and a half-acre site, called Round the Bend, has pitches for tents and vans and aims to rent itself out for festivals, weddings and other events. It has been launched by Tillington resident Lorraine Dove. See roundthebendevents.uk



**Please support our advertisers – they are why
Graffham Parish News is free for you, our readers!**

SPECIALISING IN RESTORATION OF TRADITIONAL HERITAGE BUILDINGS

All aspect of roofing and construction completed

Family run business with over 30 years of experience

- ✔ Tiling
- ✔ Slating
- ✔ Flat roofs
- ✔ Repair works
- ✔ Chimney works
- ✔ Lead works
- ✔ General Building



CONTACT

✉ info@newheightsroofing.co.uk
☎ 07508 468418



📍 KLE Decorators Ltd
Unit C12
New Barn Farm
Funtington
Chichester
West Sussex
PO18 9DA
☎ 07880 317071
✉ hello@kledecorators.co.uk
🌐 kledecorators.co.uk

We are totally committed to the finest quality of painting and decorating that there is.

Be it the high-end painting & decorating of apartments and offices, refurbishment of kitchens & bathrooms, full interior refurbishments, or renovation works on a listed building, we ensure that all of our work is carried out thoroughly, with due diligence by all our painters & decorators.

Our decorating services include:

- Painting
- Spraying
- Wallpapering
- Specialist coatings
- Traditional paintwork
- Feature walls
- Coving
- Plaster and render repairs
- Woodwork repairs
- Special effects such as graining, marbling, murals



Property watch

Homes for sale locally, posted at [rightmove.com](https://www.rightmove.com) since our previous edition:



1 Hillside, The Street, Graffham GU28 0NP: Four bedrooms, two bathrooms, cloakroom, two reception rooms, kitchen/diner. 124 square metres (1,337 sq ft). Garden, garage, workshop. Guide price £775,000. *Jackson-Stops, Midhurst 01730 774837. Listed 29 Sep.*

Oakfield, Lodsworth GU28 9BL: Three-bedroomed mid-terraced house, one bathroom, sitting room, kitchen. Total interior floor area of 81 sq m (873 sq ft). Garden. Parking to front and rear. Offers in region of £375,000. *Henry Adams, Midhurst 01730 771345. Listed 26 Sep.*



Garden Cottage, Tillington GU28 0RA: Detached single-storey cottage, three bedrooms, two bathrooms, living and garden rooms, kitchen/diner, utility. 105 square metres (1,133 sq ft). Garden with extensive parking. Guide price £750,000. *Savills, Petworth 01798303558. Listed 4 Oct.*

Windmill House, High Street, Petworth GU28 0AU: Semi-detached period town house, four bedrooms, three bathrooms, four reception rooms, kitchen/breakfast, utility. 238 sq m (2,566 sq ft) floor area. Walled courtyard garden. Double garage. Guide price £1.15 million. *Barrington and Co, Petworth 01798 309657. Listed 26 Sep.*



Monks, Lombard Street, Petworth GU28 0AG: Victorian town house, three bedrooms, one bathroom plus cloakroom, reception hall, sitting room, kitchen/diner, utility. 100 square metres (1,078 sq ft). Walled courtyard garden. Guide price £725,000. *Barrington and Co, Petworth 01798 309657. Listed 11 Oct.*

Bignor Farmhouse, Bignor RH20 1PQ: Grade II with period farmhouse, unconverted Sussex barns and several partially converted outbuildings. Six bedrooms, three bathrooms. 289 sq m (3,110 sq ft) floor area. 0.5 acres gardens. Guide price £2m. *Jackson-Stops, Midhurst 01730 774837. Listed 5 Oct.*



From Town Hall: Park fine to avoid a fine

Our representative on Chichester District Council, John Cross, provides his regular update on his key issues of focus right now.



I accompanied one of Chichester District Council's parking enforcement officers on his rounds recently to understand the issues of parking and how contraventions are dealt with. It was a fascinating insight.

First, I was pleased that we do not charge blue badge holders for parking, unlike many district and county councils – so long as their vehicle is in a bay for general car parking. Blue badge holders who cannot find a disabled space may instead park in a regular space for free. However, if they park in a spot that requires a permit or is a loading bay, then they are liable to receive a penalty charge notice (PCN).

PCNs are most commonly issued for not having a valid ticket or not displaying it. Usually for these infringements, the enforcement officer will give the driver five minutes or so in case he or she is in the process of buying a ticket.

An instant PCN is likely to be issued to anyone parking in a designated loading bay, on double yellow lines or in front of schools with the zig zag lines. Some infringements also carry three points on your license – parking across a zebra crossing for instance.

Once a PCN is issued it cannot be rescinded by the enforcement officer – or a district councillor. You have a period to pay, with the fine halved if you pay in a certain time frame, or you can appeal. The enforcement officer will have gathered all evidence on camera before issuing a ticket – such as photos of the car's interior and outside to illustrate there was not a valid ticket on display, that the ticket machines nearest the vehicle were working, that any signage was clear etc. So usually, all PCNs are upheld on appeal – unless in an unforeseen circumstance.

Many a time I have been forced to park slightly out of a parking bay because the vehicle in the next bay has parked right on the white line. If you have two wheels out of the parking space, you are in contravention – and risk getting a ticket.

- Last month, I wrote about the Stopham Mount. I am pleased to say the crowd funding has so far raised £4,223, so we are nearly halfway to saving this valuable culture treasure for our community. Its acquisition would mean it stays in the district in which it was found. Many thanks to all the 123 people who have donated so far. The crowdfunding site can be found at www.thenovium.org.uk.

Graffham Empire Movies

Bringing cinema to the village – and raising funds for our Empire Hall



A terrific all-star cast in a beautifully filmed, wonderfully warm, funny and heartfelt version of Louisa May Alcott's coming-of-age classic that has won multiple awards and wowed critics and audiences alike. Bring your hankies. **U 134 minutes**

★★★★★ *The Guardian*

★★★★★ *Empire*

★★★★★ *The Independent*

★★★★★ *Time Out*

★★★★ *Daily Telegraph*

★★★★ *The Times*

Friday 22 November

Empire Hall

Doors and bar open 7pm for 7.30pm start

Interval ice creams

Tickets from [ticketsource.co.uk/GEM](https://www.ticketsource.co.uk/GEM) or at the door on the night

£10 adults, £5 under 18s

GEM returns with four silver screen jewels



Graffham Empire Movies (GEM) returns this month to kick off its winter season with the film it would have screened before it went into hibernation in 2020 as the pandemic forced all cinemas to close down. Four wonderful motion pictures in all have been booked with the first showing this month – and now you can book in advance rather than relying on picking up a ticket at the door on the day.

GEM exists to bring cinema to the village – and to raise funds for our Empire Hall. Films are screened in high definition and with high quality sound using the hall's new state-of-the-art audio-visual system, with its three-metre screen. With a bar before the film and during the interval – when ice creams are available – it's a great chance to see a marvellous movie and also to catch up with friends and neighbours. The season opens on Friday 22 November with the latest version of *Little Women*. GEM Chairman Michael Blunt said: "Featuring a terrific all-star cast, this wonderfully warm, funny and heartfelt film is widely regarded as the best adaption yet of Louisa May Alcott's much-loved coming-of-age classic. It's beautifully filmed and won scores of awards. While it may be available now on some TV

The advertisement features a background image of a plate of fish and chips. A circular logo for 'THE THREE MOLES' is positioned in the upper left of the image. The text 'fish and Chips' is written in a cursive font, with 'Chips' in a larger, bold, sans-serif font. Below this, the word 'FRIDAYS' is written in large, bold, white, sans-serif capital letters. At the bottom of the image, the phrase 'Thank cod it's Friday!' is written in a white, sans-serif font. To the right of the image, on a dark green background, the text 'Fish & Chips available to eat in or takeaway every Friday evening' is written in white, sans-serif font. Below this, the text 'Book a table or place a pre-order for takeaway by visiting our website or call 01798 861303' is written in white, sans-serif font, followed by the website address 'thethreemoles.co.uk' in white, sans-serif font.

Fish & Chips
available to
eat in or
takeaway
every Friday
evening

Book a table or place a
pre-order for takeaway
by visiting our website
or call 01798 861303
thethreemoles.co.uk

screening channels, there's nothing like watching it on the big screen." Tickets are just £10 for adults and £5 for under 18s – book in advance (with small booking fee) via www.ticketsource.co.uk/GEM or at the door.

The other three movies booked for the new year are:

Wicked Little Letters

Saturday 25 January



Based on a true story, when Edith and fellow Littlehampton residents begin to receive wicked letters full of unintentionally hilarious profanities, foul-mouthed Rose is charged with the crime. Suspecting that something is amiss, the town's women investigate. Filmed in Arundel, critics described it a 'the British comedy of the year', 'fantastically funny' and 'wickedly entertaining'. A stellar British acting line-up led by Olivia Colman, Jessie Buckley and Timothy Spall. Certificate 12 – strong language!

One Life

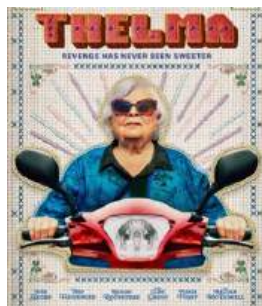
Saturday 15 February



A tremendous, heart-wrenching and heart-warming true story of a young London broker who rescues 669 children from the Nazis in Czechoslovakia in a race against time ahead of World War II. It's not until half a century later that Sir Nicholas Winton comes to terms with the guilt and grief that he has carried through the decades that he could not have saved more. Anthony Hopkins and Helena Bonham-Carter star.

Thelma

Saturday 29 March



A tender, laugh-out-loud, well-observed story of a granny refusing to accept the limitations of age, as a feisty 93-year-old sets out on a treacherous quest, accompanied by an aging friend and his mobility scooter, to reclaim what was conned from her by a phone scammer pretending to be her grandson. June Squibb, in her first lead role after a glittering career, performed most of her own stunts in this 2024 release.



GRAFFHAM CHRISTMAS



FAIR

SATURDAY



7 DECEMBER
11AM - 2PM

EMPIRE HALL



Full details in December's
Graffham Parish News



CALLING GRAFFHAM CHRISTMAS BAKERS, CRAFTERS AND DECORATORS!

Last year's fantastic Produce Stall contributed over £1,000 to the Christmas Fair fund-raising effort for St Giles. Let's aim to beat that total this year with all sorts of Christmassy treats from Graffham's wonderful bakers and crafters:

- Christmas and seasonal cakes
- Christmas puddings
- Mince pies
- Savouries such as sausage rolls, cheese straws, mini quiches
- Sweet biscuits, tartlets, tray bakes
- Surplus Christmas tree decorations
- Crafted gifts and wreaths

All items can be delivered to the Empire Hall on the morning of Saturday 7 December.

GRAND RAFFLE

Lots of amazing bottles and other prizes to be won in the Grand Raffle - watch for your tickets in next month's Graffham Parish News!



AUCTION

This year's fair auction will have a Twelve Days of Christmas theme. Here are the opening few lots - watch for next month's Graffham Parish News or just attend the fair itself for details of all the wonderful goodies up for grabs.



On the first day of Christmas
my true love gave to me...



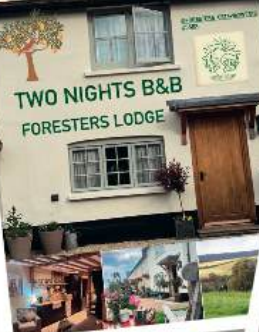
1



A Richard Davidson
Painting



2 ON THE 2ND DAY OF
CHRISTMAS MY TRUE
LOVE GAVE TO ME...



On the 3rd day of
Christmas
my true love gave to me

3

Rescue
Hens



*Unmissable for fans of: JONI MITCHELL, PAUL SIMON,
JOAN ARMATRADING, RANDY NEWMAN, DEBBIE HARRY*



ED BLUNT

*"His songs are wry and
completely brilliant"*

CHRIS DIFFORD



HOLLIE ROGERS

*"A magnificent and
powerful voice"*

SUZANNE VEGA



DAISY CHUTE

*"A voice like the
first rays of sunlight"*

BRISTOL, 24/7

THE BIG BANG LOVE! TOUR

**AN EVENING OF SONGS AND STORIES FROM
THREE ACCLAIMED SINGER-SONGWRTERS**

HARMONIES ★ HUMOUR ★ OUTSTANDING MUSICIANSHIP

"One of the best live folk music experiences available" FATEA MAGAZINE

**SATURDAY 11TH JANUARY
EMPIRE HALL, GRAFFHAM
DOORS: 7PM, MUSIC: 7.30PM**

TICKETS: www.empirehall.org.uk/tickets

Bill's bygones: Old hat, hat-trick, Howick

A regular feature in which joint editor Bill Barrett looks back at what was happening in the village and the wider world this month in the past.

10 years ago – November 2014: Graffham Parish Council sets up a working group to discuss a proposal to drill for oil at Baxters Copse. At the Village Breakfast, Michael Blunt talks on *100 Years of Passenger Flight*. Graffham Rustics present *The 39 Steps* at the Empire Hall. A week later The Old Hat Jazz Band perform at the same venue, after the Christmas Fair (which makes a profit of £4,462) earlier in the day has been cleared away. The Church of England adopts legislation paving the way for the appointment of women as bishops. Nicola Sturgeon becomes first female First Minister of Scotland after the resignation of her predecessor Alex Salmond. Lewis Hamilton becomes Formula One world champion after winning the Abu Dhabi Grand Prix. Deaths of novelist PD James (aged 94), gangster “Mad” Frankie Fraser (90) and clarinetist Acker Bilk (*Stranger on the Shore*, 85).

25 years ago – November 1999: Graffham Parish Map Group is awarded £1,500 by the Millennium Festival Awards for All scheme, while a fund-raising quiz for the project is held in the Pavilion. Chris Adams (now Seaford College's Head of Cricket) plays the first of his five Tests for England – he comes in against South Africa at Johannesburg with four wickets down, the score on only two runs and fast bowler Allan Donald on a hat-trick. He hits 16 in a stand with fellow debutant Michael Vaughan. Sussex Police, which has 25 officers (and two traffic wardens) providing 24-hour cover for the Midhurst/Petworth area, comes bottom of a table comparing levels of crime reduction across 43 forces, blaming its showing on a successful campaign to encourage the public to report incidents. The House of Lords Act 1999 removes most hereditary peers. Death of author, raconteur and gay icon Quentin Crisp (*The Naked Civil Servant*, 90).

50 years ago – November 1974: Graffham Rustics present *Brush with a Body*, a comedy thriller. Daphne Howick is praised for “her usual polished performance”, as are set designer and painter John Covington and stage manager Vic Constable. Reverend Charles Johnson celebrates 30 years as headmaster of Seaford College as construction nears completion of the new sports hall, being built to provide indoor facilities for the 430 boys as well as local clubs. Canon Colin Docker, former vicar of Midhurst, is appointed Bishop of Horsham. Lord Lucan disappears. The Birmingham pub bombings kill 21. MacDonald's open its first UK restaurant. David Essex is UK number one with *Gonna Make You a Star*.

The mysterious case of Lavington's land agent

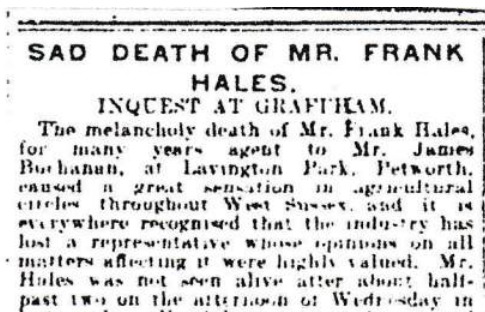
In a special feature for Halloween, Richard Davidson recounts the baffling demise of one of the former occupants of his Brookdene House home, then called The Gables, back in 1915.

Back in the early days of World War I, Frank Hales, then 51 years old and a father of seven, was the first land agent of village squire and benefactor James Buchanan (later Lord Lavington), the whisky baron, on the Lavington estate. He was a well-respected Graffham resident with vast agricultural experience and had built a strong reputation in Sussex farming circles. By all reports, he was a genial man who liked to keep busy and had a reputation as a particularly good after-dinner speaker and a renowned wit.

Graffham owed much to his energy. He was the chairman of Graffham Parish Council and had recently been re-elected to the Midhurst Board of Guardians and Rural District Council. He was a leading member of the Petworth and District Agricultural and Horticultural Association, the local Conservative Association and of the Carnarvon Lodge of Freemasons,

One morning in March 1915, the groom/coachman from The Gables made the short stride to Calloways to enquire whether anyone there knew where Hales might be. Edward Tallop, an engine driver from Woodcote, revealed that he had seen Hales the previous Wednesday but not since then. The two of them set out from Calloways and searched the nearby meadows – until they found Hales' body lying face down in a water trough in the nearby Eight Acres Copse.

An inquest was convened a week later at The Gables into this mysterious death and we know from the report in the *South of England Advertiser* how events proceeded.



A contemporary newspaper report of the coroner's inquest into Frank Hales' "melancholy" death at Graffham in 1915.

The first person to give evidence was Hales' son Hubert, who ran Norwood Farm. He stated that he had last seen his father six weeks earlier when he had appeared all right and not worried about anything.

The coroner, Mr F. Blagden Tompkins, then heard from the two



The Gables, now called Brookdene House, seen in a postcard from around the time that its occupant Frank Hales mysteriously drowned in a nearby trough.

men who had found the body. Evidence was given that the trough in which the corpse was discovered was only 15 inches wide and 10 inches deep. The coroner remarked that this was a narrow space for a man to get right into. The local doctor, Petworth's A. E. Kerr, who had examined the body following its discovery, agreed. He thought it extraordinary, given the size of the trough, how the deceased had come by his death.

Evidence was then given by London-based accountant Gerald Blewett Manley, who said that he had been at the Lavington Estate office the previous week to examine its accounts and had occasion to question several items. He had called Hales into the office a few days later and Hales was very upset. He had known Hales since Mr Buchanan had bought the Lavington Estate in 1903 and that he "had seemed quite all right in his mind".

No further evidence was given but, in his summing up, the coroner said there was not much doubt that the deceased had drowned himself. The accountant finding fault in the books had evidently worried him. The coroner revealed that he had been informed that Hales had recently lost a considerable amount of money, but no direct evidence of that had been identified.

It was up to the coroner's jury to rule whether the deceased's state of mind was sufficient to absolve him from the responsibility of suicide. After a brief deliberation, the jury found that Hales had drowned himself whilst of unsound mind.

His funeral took place at St Giles a few days later, on 27 March, conducted by the Rector, the Rev C A K Hockey. The local paper reported that it was "largely attended", with the agricultural industry being well represented as were the Carnavon Lodge of Freemasons and employees of the Lavington Estate.

It is interesting to note that amongst all the names listed as attending the funeral there was no mention of James Buchanan.

Graffham Chronicles: Catterntide

In her column this month, local historian Pauline Goodwin focusses on the ancient Sussex November festivals of St Catherine and St Clement.

November is a month that contains several notable feast days – some still actively celebrated but others not. Two Sussex festivals which have faded away over time are the feasts of St Catherine, or Catterntide, on 23 November, and of St Clement, on the 25th.

Like many festivals in Sussex, including in this parish, these celebrations consisted of going from house to house singing songs and receiving offerings. Making noise seemed to be a favoured way of marking feast days. When celebrating the twinned festival of St Clement, who was the patron saint of blacksmiths, a few days after Catterntide, smithies would explode large quantities of gunpowder in their forges.

The *Sussex Dialect Dictionary* says that Catterning “is to go round begging for apples and beer for a festival on St. Catherine's Day”. The entry implies that the Catterning took place before St Catherine's Day itself. In Graffham, revellers would most likely have preferred cider to beer, as it was the preferred local brew. This is illustrated by the fact that in Graffham when legislation was passed to prevent

How to make your own Cattern cakes

If you fancy trying Cattern cakes, here's a recipe for a contemporary version, adapted to suit a modern palate. I made a batch following this more modern recipe and my family enjoyed them very much. The original cakes were made of a bread dough but the flavourings in this version are the same as the originals. Tasters tend to find that the flavours seem very Christmassy but when they were originally baked this was a year-round flavouring. Enjoy!



Ingredients

350g self-raising flour	1 teaspoon mixed spice
1 teaspoon cinnamon powder	Pinch fine sea salt (optional)
50g ground almonds	350g caster sugar
100g currants	100g candied peel
1 teaspoon caraway seeds	280g butter
1 egg, beaten	Extra sugar and cinnamon
1 more egg and 25g milk, beaten together for a glaze	

workers being paid in cider, rather than cash, they went on strike! Cattern cakes were also baked and offered in a generosity of spirit.

So, who was the Catherine who became a saint? She was born in around 287 AD in Alexandria, Egypt. Her father Cestus was a wealthy, cultured man, educating his daughter in turn in sciences and philosophy. When she was 14, Catherine had a vision which led her to become a Christian, thrusting her along a stormy path, as she was living in troubled times for Christians. Alexandria was ruled by the Roman Emperor Maxentius and legend states that he used his power cruelly to persecute Christians, the religion endorsed by his rival, Constantine. Catherine did not escape his anger, and he demanded that she renounce her faith – but she refused and

▶ *Continued on next page*



St Catherine as depicted by Michelangelo Caravaggio

Method

1. Preheat the oven to 180°C.
2. Sift the flour, spices and salt into a mixing bowl.
3. Add the sugar, ground almonds, dried fruit and caraway seeds.
4. Add the melted butter and beaten egg.
5. Bring together to form a dough.
6. Bring the dough together, form a ball then cover with plastic and allow to rest in the fridge until firm, at least an hour
7. Roll the dough out into a rectangle, about 12mm thick.
8. Brush the top with a little water, then sprinkle with extra sugar and cinnamon.
9. Roll the dough up like a Swiss roll to form a cylinder. It's a fragile dough, but don't worry, just squish it back together.
10. Slice into thin wheels.
11. Use a knife to draw a spiral over the tops of the cakes.
12. Place Cattern cakes, well spaced, on baking trays lined with baking parchment and place in the oven for 10 to 15 minutes.

► *Continued on next page*

was condemned to be broken on the wheel. However, it is said that when she touched the wheel, it broke apart. Maxentius then decreed that she should be beheaded for still refusing to relinquish her faith.

Pope Pius II canonised Catherine on 29 April 1461. St Catherine and one of the 14 Holy Helpers, becoming patron of science, the arts, literature and education.

Catherine and the wheel became associated in lore and so we have the Catherine wheel firework named for her and Cattern cakes, which are formed in a similar twirled wheel.

These two elements of her story have played their part in today's reintroduction of St Catherine's celebrations. Local bonfire societies, responsible for a series of Guy Fawkes festivals in Sussex, have reintroduced Catterning in places like Hastings.

There also used to be many more societies locally, in and around Chichester. In fact, their events mark both Guy Fawkes and the burning of 17 Protestant martyrs in Lewes' High Street from 1555 to 1557, during the reign of Mary Tudor. I purposely do not refer to these events as celebrations because certainly most of the Lewes societies do not regard them as fun-filled carnivals but as solemn remembrance marches.

Its Bonfire Boys do not smile while marching and are dressed soberly, recalling the Protestant martyrs who were burned in their town. Having lived in the heart of the Bonfire Societies, I recall the secrecy and seriousness in which these marches take place.

One night in early November, a work colleague who lived in Lewes went to see his neighbour. He found him at a kitchen table laden with sacks of gunpowder, in the



Bonfire Boys at Lewes pulling barrels of burning tar.

process of making the designated political figure to be blown up that year at his society's bonfire. The identity of these effigies, selected for this fate, is kept secret until the evening of the march. The lack of safety in this was reflected in the actual evening of marches with Bonfire Boys wearing suits of fireworks,

throwing fireworks along the route and pulling barrels of burning tar. The tar barrel tradition is hundreds of years old. The exact origins are unknown but probably started after the gunpowder plot of 1605 although it could have been something to do with fumigating cottages or as a warning of the approach of the Spanish Armada.



A Bonfire Society display of a classic Sussex saying.

A Guide to British Customs and Local Traditions states that nowadays in Hastings, at Catterntide, the bonfire society members tour the town dressed in their festive attire, starting outside St Clement's Church then moving from pub to pub, singing songs and lighting Catherine wheels as they go. Cattern cakes are baked for the festival and eaten on this day. They sing the old traditional Sussex song:

*Catter' and Clemen' be here, here, here,
Give us your apples and give us your beer,
One for Peter, two for Paul,
Three for him who made us all.
Clemn' was a good man, Cattern' was his mother.
Give us your best, and not your worst,
And God will give your soul good rest.*



Graffham Families' WhatsApp group

For all families new to the village or who haven't yet picked up on this – do join us! This group is offered as a service for Graffham families to link up in whatever way is helpful. Just email me at reverendvivien@gmail.com and I'll be glad to add you in. We have almost 30 family members already and would be glad to include everyone!

– Rev Vivien

GRAFFHAM EMPIRE HALL
**BURNS NIGHT
CELEBRATION**

SATURDAY 18 JANUARY
DOORS OPEN 7PM • DANCING STARTS 7.30PM

**DANCING TO THE SUSSEX PISTOLS
PIPING IN THE HAGGIS
BURNS SUPPER**

Cost £35 per person
Please bring your own drinks

Enquiries and to book please telephone
Harriet Rowntree on 01798 867536



Dance practices in the Empire Hall:
Sunday 29th December, 5th and 12th of January 2025
4-6pm, £2 per session

We have covered a number of sports in this column over the years and this month sees a new one. Somewhat surprisingly, given how many locals are regular players, we are featuring golf for the first time. Also this month, bowls hibernates for the winter while the village's polo ace hot foots it to the sunshine of the southern hemisphere.

Polo

Norwood Lane's Beanie Bradley is set to win her third England international cap after being selected for the national women's team tour to South Africa next month.

She became the youngest female yet to play for her country in the sport when she was first selected three years ago, against Argentina at home, while she was still a Seaford College pupil.

Congratulations Beanie, and we will all enjoy some southern hemisphere sunshine if you send us some photos!



Golf

Cowdray Golf Club in September was the scene of a memorable day of prize-winning for Graffham golfer Gill Dover, of The Street. With a handicap of 14.5 after playing regularly for 12 years, she teamed up with two other lady members and one of the Cowdray pros, Hannah Ralph, in the annual Ladies Pro Am – and they came an impressive second out of 26 teams in the overall competition.

That wasn't their only excitement of the day, however – as Gill won the nearest-the-pin-in-two prize on the 332yd par 4 12th hole. She managed to put her second shot within four feet of the hole on the upturned saucer of a green. Unaware that she had won until the prize-giving at the end of the day, she delightedly received her reward of a three-day golfing break to the Algarve. The prize was generously donated by Club Golf Holidays.

Graffham Tennis Club



Awards evening The 'end of season' awards ceremony (in inverted commas because tennis continues year-round!) will take place at the pavilion on Saturday 23 November at 6pm. We will be asking for £5 per person to include bowls of chili con carne (meat and veg/vegan options) and the bar will be open for drinks. We'll also hold a raffle with prizes including new club merchandising. All proceeds will go towards the new playground funds and tickets can be bought on the night with your card (cashless bar and raffle). Email admin@graffhamtennis.co.uk with numbers attending.

League matches The winter league season kicked off with a pleasing, if not satisfying, walkover for the Mixed B team against Kingsley. More rewarding was the first outing for the Mixed A team of Andy Craig, Sian Green, Ollie Edwards and Olive Amin. Facing a strong team from Denmead in Division 1 they comfortably achieved a 6-2 victory.

Graffham Tennis Club East Hants League home fixtures: November

All spectators welcome!

10	Sun	1pm	Mixed Doubles	Div 3	v Buriton
23	Sat	1pm	Mixed Doubles	Div 1	v Haslemere A

GROUP FITNESS CLASSES

WHEN
TUE & THU EVERY WEEK
8:45am - 9:45am

WHERE
GRAFFHAM

£10 PER SESSION
FIRST SESSION FREE

CONTACT LINDSAY FOR MORE INFO
07778 171 717

ALL LEVELS WELCOME




PERSONAL TRAINING AVAILABLE





KaHo

Christmas Shopping
at
Northhurst Farm

Stress-Free Christmas shopping
with Hand Block Printed gifts for all -
even for impossible to shop for teens and husbands!
Mince pies and coffee ... do pop along!



Open times: 9.30am - 5.30pm
November 19th and 20th
Nov 26th
By appointment on other dates or times

Lurgashall, GU28 9HA
website: www.kahoprints.com
email: kahoprints@gmail.com

Graffham Bowls Club

by Secretary Liz Pegram

The bowls season was rounded off with a very enjoyable evening of candlelit bowls, with members joined by friends and family. The club will re-open in April.



Pickleball

Local players of this new form of tennis played on a badminton-sized court with a hollow plastic ball will be gathering again in the Empire Hall every Sunday at 6.30pm, kindly sponsored by the Three Moles.

This new sport that's taking the world by storm is suitable for all ages. Everyone is welcome – just turn up with trainers or other soft shoes.



Graffham Pickleball Club

Every Sunday 6.30pm at The Empire Hall

FREE for everyone to join in thanks to The Three Moles who pay for the facilities for us. Suitable for all ages, Pickleball is much more than just a sport, it is a social phenomenon that is building communities, fostering connections and enhancing lives! Find out for yourself and join in! We meet for a drink (and sometimes a bite to eat) after at The Three Moles and everyone is welcome. Contact Beenie Bradley 07500 080417 for more info.

Graffham Parish News' nifty November quiz

Ten quick fire questions from Bill Barrett to test your local, topical and wider general knowledge. Answers at the top of page 53 (no cheating!)

- 1 How many names are on Graffham's War Memorial?
- 2 What is the significance to Petworth of the French town Ranville in Normandy and the Italian town of San Quirico d'Orcia in Tuscany?
- 3 According to former British Airways Concorde Chief Pilot Captain Mike Bannister in his talk at the Empire Hall on 4 October, what was the return fare from London to New York on the aircraft at the time it was "retired" in 2003: a] £3,500, b] £6,800, c] £10,000?
- 4 In November 1984, which Controller (and current Chair of Ofcom) announced that no more beauty pageants would be screened on BBC1?
- 5 Which British Prime Minister was born on 30 November 1874?
- 6 Who is the current Prince of Monaco: a] Albert II, b] Rainier III, c] Pierre IV?
- 7 What is a samovar?
- 8 The Lancastrian martial art of Eckythump was the creation of which 1970s BBC comedy show?
- 9 *They Died with Their Boots On*, a 1941 film starring Errol Flynn, depicted a romanticised version of which 19th Century United States general's life?
- 10 Which child actor played Claudia in *Interview with the Vampire*, which was released this month in 1994?

Our local foodbank gears up for winter

Chichester Foodbank, which also covers Petworth and its surrounding villages including Graffham, is gearing up for what it expects to be a busy winter, prompted by rising energy bills and cuts to pensioners' winter fuel payments.



It says: "It's easy to feel overwhelmed, especially when you're forced to choose between heating your home or putting food on the table. No one should have to make that choice. If you're finding it difficult to make ends meet, Chichester District Foodbank is here to provide support."

To see how, go to chichesterdistrict.foodbank.org.uk/get-help/



The fourth and final version of the special benches features a life-size sculpture of Sir John Laing (right) and, like the one at St Giles (left), a memorial to the late Queen.

‘Master’ bench like ours now in its resting place

The ‘master version’ of the special bench installed a year ago outside St Giles Church has now been put in position at Furness Abbey, in Cumberland. It is identical to its Graffham counterpart – but topped with a life-size sculpture of Sir John Laing, who developed the Carlisle-based family building firm into the national enterprise it became, with the rebuilding of Coventry Cathedral after World War II one of its best known projects.

This statue depicts him at a moment of prayer – he was famous for praying at Cumberland’s Furness Abbey while in a “black” state with his business facing ruin and a sense of shame that he had let down his father as well as the men employed by the firm, and, later, sitting back in the same spot at Furness Abbey, to give thanks and commitment to the promise he had made to gift the great majority of his earnings to good causes. Like the Graffham bench, its backrest features a plaque commemorating the reign of the late Queen Elizabeth II.

Only four of the benches – made of metal but looking like wood – were commissioned, by charitable trust The David Laing Foundation. The Graffham model, weighing 250 kg (40 stone) is sitting securely on specially created paving by the outside wall of the Lady Chapel, on the building’s south side, where it best catches the sun.

The other two have been gifted to parishes, like ours, with close connections with the trustees of the Laing Foundation – Grafton Underwood, Northants, and in Brill, Bucks. Also among the charity’s trustees is Stuart Lewis, who is chairman of Graffham Parochial Church Council’s Fabric Group, looking after St Giles’ building and churchyard.



Quizzers fill the hall: The Empire Hall was packed to capacity for Graffham Down Trust's annual quiz night on Saturday 12 October – with every one of the 12 tables filled with teams of six, answering questions and kept in hysterics by quizmaster Michael Blencowe, *Graffham Parish News* columnist and naturalist extraordinaire (inset). In a tightly contested evening, the eventual winners by a short head were the Gravediggers team, comprising the editors of this publication and their spouses – Bill and Ginny Barrett, Michael and Sally Blunt and Philippa and David Sanders.

W. Bryder & Sons

est. 1863

The Gables
Tillington
GU28 9AB
Tel: 01798 342174

95 Lower Street
Pulborough
RH20 2BP
Tel: 01798 872000

Email: wbryderandsons@hotmail.co.uk

**5TH GENERATION LOCAL FAMILY RUN
INDEPENDENT FUNERAL DIRECTORS**

24 Hours Service
Private Chapel of Rest
Monumental Stones supplied
Pre-Paid Funeral Plans available
Grave Maintenance service

Who can be buried or have a funeral at St Giles

Our churchyard around the church is closed by Order of Council permitting no further burials, *writes the Rev Vivien*. There is legal entitlement for anyone who lives within the parish boundary, or who happens to die within it, to be buried in St Giles' churchyard extension, across the road from the church. If someone is buried in a grave which has remaining space, their relative or anyone else can be buried here or have their ashes buried here, with the permission of all of the next of kin.

Another way to be buried in a churchyard in the future is by obtaining a faculty. Although everyone is legally entitled to apply to a consistory court for this, it takes the views of our Parochial Church Council (PCC) into account – but, as space remaining is limited, the PCC no longer welcomes such applications, which makes them unlikely to succeed.



One day it may be legally permissible for people to be buried over existing graves that are more than 75 years old. We wait and see if the government decides to allow this return to the practice of earlier centuries, which may or may not be welcome. Whatever happens, we continue to record who rests in the sacred space of our churchyard, until the day of resurrection should come.

Funerals in our parish For centuries, too, people have turned to St Giles for the burial services of their loved ones. Anyone can request a funeral service at our church, whether they attend services there or not. If it would be welcome to receive this comfort, we are glad to offer it. A service in church allows space and time to remember loved ones peacefully, to celebrate and give thanks for a person's life and to commend them to God's keeping.

When a cremation follows the service, the 'committal' element of the service often takes place now at the lychgate, after which mourners watch the hearse draw respectfully away, bidding farewell at the church rather than the crematorium then gathering together locally for refreshments and the sharing of memories. It's a good and time-honoured way to honour those we have loved and lost awhile. We hope such services will continue to be drawn on for consolation, whenever the time of need may come.



TAIZÉ PRAYER

song, prayer and silence



Sunday 24 November 6.30pm

All Saints Chapel, Graffham (opposite shop)

All welcome to this short ecumenical service based around a pattern of worship from the Taizé Community

Who's doing what at St Giles in November

Here's the rota for this month's 10.30am services. If you cannot do your slot, please arrange a swap and advise Diane Bellis at diane.bellis@gmail.com and Rev Vivien at reverendvivien@gmail.com

	Reading	Flowers	Cleaning
3	Isaiah 25 v6-9 & Psalm 24v1-6	 Diane Bellis	 Harriet and Clive Rowntree
10	Jonah 3 v1-5, 10 & Psalm 62 v5-end		
17	To be confirmed		
24	Daniel 7 v9-10, 13-14 & Psalm 93		

Other denominations locally

Methodist: Midhurst. *Minister:* David Muskett *Tel:* 01730 233436. *email:* superintendent@esanddcircuit.org.uk. *Web:* midhurstmethodist.com *Worship:* Sundays 10.00am, and Café Church 1st and 3rd Wednesdays 10.30am.

Roman Catholic: The Catholic Churches of Saints Anthony and George, Duncton, The Divine Motherhood and St Francis of Assisi, Midhurst, and The Sacred Heart, Petworth. *email:* petworth.abdiocese.org.uk. *Tel:* 01798 342169. *Web:* www.petworthcatholic.org

Mass

	8am	Duncton	Thu	9.30am	Petworth
Sun	9.30am	Midhurst		12noon	Midhurst Convent
	11am	Petworth	Fri	6.30pm	Petworth
	Tue	10.30am	Petworth	Sat	9.30am
Wed	9.30am	Midhurst	5.30pm		Petworth

Society of Friends (Quakers): St Anne's Community Centre, St Anne's Hill, Midhurst, GU29 9NN. *Web:* sussexwestquakers.org.uk *Meetings:* 2nd and 4th Sundays 10.30am.



TEDDY TIME in the Pavilion TODDLER GROUP

Wednesdays 10.15-11.30am
Pavilion, Graffham Rec

No charge. All welcome. Just come along!

What's on at our village church and chapel

- All residents of and visitors are welcome to all services.
- St Giles Church is at the far south end of Graffham Street, near the Downs.
- All Saints' Chapel is opposite Graffham Village Shop.
- Both St Giles Church and All Saints' Chapel are open daily.
- See stgilesgraffham.org or Facebook's [@stgilesgraffham](https://www.facebook.com/stgilesgraffham) for any changes.

October

27	Sun	10.30am	Parish Eucharist and Dedication Festival: Last after Trinity	St Giles Church
29	Tue	9.30am	Morning Prayer then Pilgrims at 10am	All Saints Chapel
30	Wed	2.30pm	PCC Community Group meeting	TBA
31	Thu	2.30pm	Funeral of Patricia Norman RIP	St Giles Church

November

2	Sat	9.30am	Come and Sing!	St Giles Church
3	Sun	10.30am	All Saints Sunday Parish Eucharist	St Giles Church
9	Sat	10am-12noon	Bellringing practice	St Giles Church
10	Sun	9.30am	Remembrance Sunday Requiem Mass: <i>Note earlier time</i>	St Giles Church
		11am	Act of Remembrance	War Memorial
		6pm	Evensong	All Saints Chapel
11	Mon	11am	Armistice Day Prayers	War Memorial
12	Tue	9.30am	Morning Prayer then Pilgrims at 10am	All Saints Chapel
17	Sun	9am	BCP Holy Communion	St Giles Church
		10.30am	Third Sunday Service – Iona tradition	St Giles Church
19	Tue	9.30am	Morning Prayer then Pilgrims at 10am	All Saints Chapel
20	Wed	12.30pm	Food with Friends	The Rectory
24	Sun	10.30am	Parish Eucharist Christ the King	St Giles Church
		6.30pm	Taize Prayer Service (<i>see page 48</i>)	All Saints Chapel
26	Tue	9.30am	Morning Prayer then Pilgrims at 10am	All Saints Chapel
		2.30pm	PCC Worship Group meeting	TBA
30	Sat	10am-4pm	Bellringers' Tower Outing	Sussex Churches

December

1	Sun	10.30am	Parish Eucharist Advent Service	St Giles Church
		5pm	Advent Carols Service with Seaford College choir	St Giles Church

What's on in and around the village

For all St Giles and All Saints events, see page 49. For all sports dates, see page 42-43.

October				
26	Sat		Petworth Literary Festival (till 3 Nov)	Petworth
		10-11 am	Community garden work party	War Memorial
		9am-1pm	Petworth Farmers Market	Petworth
		8pm	The Regalettes comedy play	Empire Hall
27	Sun	2am	Clocks go back one hour	
28	Mon		WSCC schools half-term (to 1 Nov)	
			Camping and Caravan site closes for winter	Graffham
31	Thu		Halloween	
November				
1	Fri		All Saints Day	
2	Sat	9am-2pm	Midhurst Farmers Market	Midhurst
		6-9pm	Petworth Bonfire Night	Hampers Green
5	Tue		Guy Fawkes Day	
		9-11 am	Great Feet foot health professional ¹	Empire Hall
		2pm	Arts Society West Sussex talk	Fittleworth Village Hall
		10.45am	Arts Society Midhurst talk	Midhurst Methodist Hall
6	Wed	7pm	Graffham Parish Council meeting	Empire Hall
7	Thu	10am	UKHarvest surplus food market	Sylvia Beaufoy, Petworth
8	Fri	From 6pm	Fireworks night	Midhurst Rother College
9	Sat	From 7pm	Heyshott Bonfire Night	Heyshott
10	Sun	9.30am	Remembrance Sunday Requiem Mass	St Giles Church
		11am	Service of Remembrance	War Memorial
		7pm	Folk music night	Three Moles
11	Mon	11am	Armistice Day Prayers	War Memorial
13	Wed	7.45pm	Petworth Sessions presents Findlay Napier	Leconfield Hall, Petworth
14	Thu	2pm	Thursday Club AGM	Empire Hall
		7pm	Our MP Andrew Griffith talk and Q&A	Cobden Hall Heyshott
16	Sat	8pm	Joanna Cooke soul concert (see page 10)	Empire Hall
18	Mon	6.15pm	East Lavington Parish Council meeting	Seaford College
22	Fri	7pm	Graffham Empire Movies presents <i>Little Women</i> (see page 27)	Empire Hall
23	Sat		St Catherine's Feast Day (see page 36)	
		9am-1pm	Petworth Farmers Market	Petworth
		9.30am	Graffham Down Trust work party (see p 18)	Meet at St Giles
		10am	Reopening of Graffham Play Area (see p 5)	Rec Pavilion
		6pm	Tennis Club trophy presentation evening	Rec Pavilion
26	Tue	9-11 am	Great Feet foot health professional ¹	Empire Hall
27	Wed	12.30pm	Lunch Club ²	Empire Hall
28	Thu		USA's Thanksgiving Day	

30	Sat		St Andrew's Day	
		10-11am	Community garden work party	War Memorial
December				
1	Sun	5pm	Advent Service with Seaford College choir	St Giles

¹Great Feet foot health professional: Available to Graffham Health Support Association members only.

²Graffham Lunch Club meets on the fourth Wednesday of the month at 12.30pm for 12.45pm for a home cooked two-course meal and coffee, at £9 a head. Please book via Sarah on 01798 867567.

Regular weekly activities (for notes, how to book, etc, see below)			
Mondays	9-10am	Fitflows Fitness ¹	Empire Hall
	Daytime-evening	Osteopath ²	Empire Hall
Tuesdays	8.30am-12noon	Post Office	Empire Hall
	8am	Strength and mobility with Gemma ³	Westerlands
	Daytime-evening	Osteopath ²	Empire Hall
Wednesdays	7.30pm	Bell ringing practice - newcomers welcome	St Giles
	9-10am	Yoga ⁴	Empire Hall
	10.15-11.30am	Teddy Time toddler group ⁵	Pavilion
	11.15am-12noon	Pilates ⁶	Empire Hall
	1.45-2.45pm	Rusty Racquets adults tennis coaching ⁷	Rec
	6pm	Boxercise with Nina ³	Westerlands
Thursdays	7-8.30pm	Badminton ⁸ - all welcome	Empire Hall
	Daytime-evening	Osteopath ²	Empire Hall
	Daytime-evening	Osteopath ²	Empire Hall
	10.45-11.45am	Ease Into Exercise ⁹	Empire Hall
Fridays	6-7.15pm	Yoga ⁴	Empire Hall
	9am	Bootcamp with Gareth ³	Westerlands
	9-10.15am	Yoga ⁴	Empire Hall
Saturdays	9am-3pm	Physiotherapy clinic ¹⁰	Empire Hall
	8am	Hard core exercise with Nina ³	Westerlands
Sundays	10am	In motion with Gareth ³	Westerlands
	5pm	Pickleball ¹¹	Empire Hall
	5pm	Casual football ¹²	Rec

Empire Hall: For booking and contact details, see Directory, inside back cover.

¹Fitflows Fitness: Contact Susie Bush 07870 219956.

²Osteopath: Bookings required. To make an appointment, for daytime or early evening, contact Anna Shawcross on 01798 867523 or see www.annashawcross.co.uk

³For all Westerlands events: Book online at www.westerlands.com/experiences/wild-fit

⁴Yoga: Deborah Albon on 07790 367009.

⁵Teddy Time: No charge. All welcome. Just come along.

⁶Pilates: Contact Nicky Capes on 07990 517858 or 01730 812297.

⁷Rusty Racquets: Contact Richard Hopp at richard@hoppcoaching.co.uk, on 07904 069457.

⁸Badminton: Contact Louisa Thomas, at louisa9000@hotmail.co.uk. All welcome.

⁹Ease Into Exercise: Contact Susie Bush 07870 219956.

¹⁰Physiotherapy: Contact Serena Cooper on 07884 445983 or at serenacooper.physiotherapy@outlook.com.

¹¹Pickleball: Contact Beanie Bradley on 07500 080417.

¹²Casual Football: Contact Lucas Thornley on 07767 721997.

BEAR

PETWORTH

20th Century Design, Antiques, Home Accessories and Gifts



Stockist of Santa Maria Novella, David Mellor, Leach Pottery, Kähler, Ichendorf, Villa Bologna Pottery and Kalinko.

Open Monday - Saturday, 10am - 5pm
10A New Street, Petworth, GU28 0AS

www.bearpetworth.com
Tel: 01798 651066

“This is a school that really does empower”

Tatler Schools Guide 2022

VISIT US!

Please call 01798 831456 or email:
sobrien@dorsethouseschool.com

to find out more or to make an appointment.

Independent prep school for children from 4 - 13

Morning minibuses and after school clubs

DORSET HOUSE SCHOOL

Bury • Pulborough

www.dorsethouseschool.com





T: 01483 208408
 E: office@ghinn.net
 www.ghinn.net



For over 50 years Ghinn & Co. have been helping home owners improve and extend their properties throughout Surrey and West Sussex.

Call now for a FREE, professional quotation from the experts.



Quiz answers (from page 44)

- 1 34. 2 They are twinned with Petworth.
 3 [c] £10,000 – equivalent, after inflation, to £18,000 in 2024. 4 Michael Grade. 5 Winston Churchill. 6 [a] Albert II. 7 A type of kettle used in Russia/Eastern Europe. 8 *The Goodies*. 9 George Armstrong Custer. 10 Kirsten Dunst.

Support St Giles while you do your Christmas shopping

You can raise funds for St Giles whenever you shop online – at zero cost to you, thanks to our church’s links with the brilliant easyfundraising scheme.

To find out how simple it is, just go to stgilesgraffham.org/shopping-online



theflooringbrothers.co.uk

LET US PUT THE COMFORT BACK UNDER YOUR FEET!

Locally based carpet and vinyl fitters and suppliers

Small family business with no large overheads so we offer sensible prices, combined with a friendly personal service from start to finish

Jon: 07595 873598

Lucas: 07532 453873

info@theflooringbrothers.co.uk



New or upgraded system? Call us today to arrange a FREE survey



- ★ Intruder Alarms
- ★ CCTV
- ★ Entry Phone Systems
- ★ Fire Alarms

t. 03300 945596

w. www.scorpio-alarms.co.uk

a. Pippin Farm, Toat Lane, Pulborough RH20 1BZ



**CHRIS NEVILLE
PLUMBER**

- 🔧 All types of plumbing work carried out.
 - 🔧 Fast, reliable, friendly.
 - 🔧 Fully qualified and insured.
- 07772 040005**

Paula's Cleaning Services

Call for Quotation! 07563 722849

House Cleaning, Office Cleaning,
Deep Cleans and everything in between!

mpi
brokers

Travel Insurance

- Wintersports
- Sailing
- Beach holidays
- Up to age 100
- Single trip, multi trip, backpacker

01428 778000

retail.mpibrokers.com/graffham

FORESTERS GETAWAY
Cosy Country Cottages

B&B ♥ Holiday rental
Graffham village
5* Livery
07768 697427

- Puppy Training
- Dog Agility
- Pet Gun Dog Classes
- 1-2-1 Sessions

Dogs Doing Better

Kilsham Farm, Petworth GU28 0LJ
www.dogsdoingbetter.com
Call Liz 07702 009272
Or email:
dogsdoingbetter@gmail.com

- 🔧 Fully insured
- 🔧 Dustless sanding
- 🔧 Free quotes
- 🔧 Interior and exterior

07912 680750

ME CONTRACTING SUSTAINABLE LAND MANAGEMENT

- Land reclamation and repurposing
- Installing farm tracks
- Drainage
- Bulk excavation work and site clearance
- Aggregates
- Creating and restoring lakes and ponds
- Ditch clearance

hello@me-contracting.co.uk
07786 161666



Straight Line Fencing

With 30+ years' experience, we are the leading fencing and groundwork specialists in West Sussex and Surrey.

Quality workmanship assured, whether you need to keep children or horses in, wildlife out or just want security for your home.

01428 685222

s1f@straightlinefencing.co.uk

Norwood Contractors GARDEN MAINTENANCE

Grass and Hedge cutting,
Pruning, weeding,
Planting etc.....

ENQUIRIES:

01798 867 338

Or 07973 370 727



Anna Shawcross
— OSTEOPATHY —

Call Anna 01798 368078

hello@annashawcross.co.uk | 

Caytons Limited

Stuart A Hail
Specialist Oil Fired
Heating Engineer

**Boilers
Agas**

**Servicers
Breakdown
Installation**

Tel 01798 344 213

M 07779 11 33 43

Email: caytonsltd@gmail.com



MOLE CATCHING
"NO MOLE, NO FEE"
WASPS / HORNETS

CONTACT ANGUS ON 07828 134086
WWW.ASCOUNTRYSIDESERVICES.CO.UK

HOOLI.

Design | Marketing | Words | Web

01730 816484

 @hoolidesign

hooli.co.uk | hello@hooli.co.uk

Get in touch with Julia and Rachel

Nº1 West Street, Midhurst

 front.hopefully.desktops

Martin Taylor

Quality Carpenter, Joiner and
Cabinet Maker

Fully fitted and freestanding furniture
a speciality. Cupboards, Wardrobes,
Radiator Covers, Fitted Kitchens.
Design service available.

Mobile 07704-524252

Email:- martin@martintaylor design.co.uk
www.martintaylor design.co.uk

Water Pipe Repair Services

Allan Marsh

07470 440836

Water pipe repairs
Water pipe renewals
Plumbing repairs
Water leak detection
Lead pipe replacement
Drain repairs
Outside taps fitted
Sinks, baths and toilets
Driveway and footpath repairs



BOOKKEEPING SERVICES

for small business and sole traders

VAT RETURNS CIS RETURNS

SELF-ASSESSMENT

GENERAL BOOKKEEPING

Jennifer Sear MICB

Heyshott, Midhurst

T: 07834 765761

E: athenabookkeeping@aol.com



need help with your pc? Clive Way BA ^{hons} Computing

The friendly professional service for your
home pc, laptop and other device nightmares.

I am now based in Wales.
But fear not –
I can still help you with
many problems by
remotely accessing your pc,
mac, phone, ipad or other
electronica.



tel: 0791 7766254

email: cliveway@yahoo.com

HELEN'S AIRPORT CARS

"With US it can often cost less than rail or airport parking"



Saloon
MPVs
Estates
4 - 8 seaters

Reliable
Affordable &
Comfortable
Pre-booked
24hr

01243 820820

Book Online Now www.airporttaxi.co.uk

24 Sudley Road, Bognor Regis. PO21 1ER



Timberscapes

Born out of a family of gardeners
and skilled craftsman

- ⊗ All hard landscaping, garden clearance
- ⊗ Site/garden clearance
- ⊗ Ground works & site levelling
- ⊗ Garden walls & raised planting beds
- ⊗ Paving, decking, wooden structures
- ⊗ Fencing and edging

07913 118780

greg@timberscapes.co.uk

Jane Bellinger

Professional Cordon Bleu Chef

Dinner Parties Luncheons

Weddings Canapes

Picnics Buffets

Afternoon Teas Desserts

info@janebellinger.com

www.janebellinger.com

St. Anne's Cottage, The Street,

Bury, RH20 1PA

Tel 01798 839433

Success

No greater gift



Maths tutoring

11+, 13+, Scholarship, GCSE, A Level, IB, Pre-U

www.escry.com

simon.mitchell@escry.com 07850 125 519

CARPET & RUG DRY CLEANING
UPHOLSTERY & CURTAIN CLEANING
STAIN PROTECTION

TEL: 01730 814 965

www.magnadrysouthern.co.uk



MAGNA DRY SOUTHERN

Free Estimates ~ Fully Insured

Matt Wheatley

Local electrician

Part P approved contractor

Fully insured

For prompt and friendly
service, please call

07976 465974

or email

mattwheatley1971@btinternet.com



SERENA COOPER

PHYSIOTHERAPY

SPECIALIST MSK PHYSIOTHERAPIST
MSC, HCPC, MCSP

Friday Physiotherapy Clinic
Graftham

Low back pain/ sciatica

Neck pain

Joint pain

Muscular aches and strains

Sporting/ligament injuries

Chronic pain

Home visits available

For more information please get in touch on:

0788-4445983

serenacooper.physiotherapy@outlook.com



Graffham Based Taxi Service

PRE-BOOKED LONG DISTANCE JOURNEYS



- PLEASE CALL, TEXT OR EMAIL FOR A QUOTE.
- 24 HOUR SERVICE AVAILABLE BY PRIOR ARRANGEMENT.

07467 521 760

pescadorashire.co.uk
pescadorasprivatehire@gmail.com



Prompt and Friendly Telephone Fran or Dean on

07768 986 338

Based in Lickfold Est. 1990

prismwindowcleaningltd.com



Roger Poat & Partners Funeral Directors & Monumental Masonry Consultants

Duck Lane, Midhurst, West Sussex GU29 9DE
Telephone 01730 812094
(24 Hours)

- Pre-need Funeral Plans
- Private Chapel

Email: info@rogerpoat.co.uk
Michael Miller & Partners Ltd

SMART CARS

PRIVATE HIRE / TAXI SERVICE

Executive Saloon and Chauffeuring Service
Professional, Personal, Reliable
Same Day Courier Parcel Service
For quotes and bookings call Dominic
07823 559099

email: smartcars@tiscali.co.uk
Card payments accepted
Established Midhurst 2006



THE MARTIN SEWELL
BUILDING COMPANY

An award-winning Chartered Building Company that has worked in the Sussex area since 1985, gaining a well-deserved reputation for professionalism, reliability, high quality craftsmanship & project management skills.

Experienced in all types of building projects, from large commercial to the sensitive renovation of listed buildings, bespoke new-builds or extensions & refurbishments.

Telephone 01243 542056
Email martin@msbc.co.uk
www.msbc.co.uk



SUSSEX LAND WORKS

Ground Work, Driveways, Patios, Paving,
Drainage, Concreting, Tarmac, Water Pipe Repairs and Installation
and more

info@sussexlandworks.co.uk
01730 814751 07950 035997

www.sussexlandworks.co.uk

Directory: Useful local contact info

DOCTORS		Petworth Surgery	01798 342248
		Midhurst Riverbank Medical Centre	01730 812121
		Haslemere Minor Injuries Unit	01483 782334
DEFIBRILLATOR		On wall outside Empire Hall	Code is C240Z
FLOOD ALERT for Lods Bridge		To check river level	bit.ly/lodsbridge
POLICE		In emergency	999
		Non-emergency	101@sussex.pnn.police.uk 101
BURST WATER MAINS		Southern Water	0800 820 999
POWER CUTS		Scottish & Southern Electric	0800 0727 282
99 FLEX BUS		Linking Graffham with Chichester, Petworth etc	01243 858854 bit.ly/99flexbus
All Saints Chapel Trust	Chairman	Clive Rowntree	01798 867536
Badminton		Louisa Thomas	louisa9000@hotmail.co.uk
Bees / Swarms			
	Wisboro' Green B'keepers	Tom Moore	07984 606214/01798 343470
	Local beekeeper	Murray West	evenings 01798 867048
Chichester District Council			01243 534734
	District Councillor	John Cross	jcross@chichester.gov.uk 07592 307027
	Dog Warden	Office hours	01243 534734
		Emergency	01243 785339
Citizens Advice Bureau			03448 487969
East Lavington Parish Council	Chairman	Charles Britton	charles.britton@eastlavington-pc.uk
	Clerk	Amy Harte	07889 979820 eastlavingtonpc@gmail.com
Empire Hall		empirehall.org.uk	empirehall@gmail.com
	Chairman and Bookings	Sally Blunt	bookings.empirehall@gmail.com
	Treasurer	Carole Sargent	01798 344790
	Maintenance	Gillian Charlesworth	empirehall@gmail.com
Foodbank		info@chichester.foodbank.org.uk	01243 773687
Foresters Arms		forestersarms-pub.co.uk	01798 867386
Graffham Archive	Robin Brind	graffhamarchive@outlook.com	01798 867619
Graffham Bellringers	Tower Captain	Howard Pescott	01798 867029
Graffham Bowls Club	Chairman	Sheila Allen	01798 342869
	Secretary	Liz Pegram	01798 867770
Graffham Cricket Club		Bill Barrett	01798 867113
Graffham Down Trust	Chairman	Jim Kirke	01798 867026
Graffham Garden Group		Carole Kirke	01798 867026
Graff'm Health Support Assc	Chairman	Sarah Lydiard-Wilson	01798 867567
	Membership	Tracy Rowe	07881 698993
	Transport		07391 802541
	Prescription collection	Ann Rowney	ann.rowney@icloud.com
	Loan of equipment	Karin Skanberg	07920 091014

Graffham Lunch Club		Sarah Lydiard-Wilson	01798 867567
Graffham Nursery		School Office	01798 867324
Graffham Parish Council	Chairman	Roger Coakes	roger.coakes@grafttham-pc.uk
	Clerk	Caroline Davison	clerk@grafttham-pc.uk
Graffham Parish News	Editorial and circulation:		editor.graftthamparishnews@gmail.com
	Advertising:		ads.graftthamparishnews@gmail.com
	See also bottom of inside front cover		
Graffham with Woolavington Parochial Church Council			stgilesgrafttham.org
	Priest-in-Charge	Rev Vivien Turner	01798 867199
			hallo@stgilesgrafttham.org
	Churchwardens	Ginny Barrett	01798 867113
		Cindy Bradley	07787 516522
	Acting Treasurer	Ginny Barrett	graftthampctreasurer@gmail.com
Graffham Rec Committee	Chairman	John Bracey	01798 867760
	Treasurer	Bernard Bayly	01798 867042
	Bookings Sec	Sonya Gillespie	graftthamrecpavilion@gmail.com
Graffham Tennis Club	Chairman	Simon Longman	01798 867317
	Membership	Richard Gyles	01798 867484
	Coaching	Emma Amin	01798 867063
Graffham Village Shop		Jeeva and Vasu	01798 867700
			graftthamvillageshop.co.uk
Graffham Vill'ge Shop Assoc	Chairman	Steve Dover	07770 499223
	Treasurer	Andy Jones	andy.jones@grafttham.net
	Secretary	Ros Britton	rosalind.britton@btinternet.com
			07971 142252
Katherine Maud Guillod Fund		c/o Graffham PC Clerk	graftthampc@gmx.co.uk
Lavington Estate		info@lavingtonstud.co.uk	01798 867275
Lavington Park Federation			graftthamanddunton.w-sussex.sch.uk
	Graffham CE Infant School		01798 867324
	Dunton CE Junior School		01798 342402
	Friends of Graffham & Dunton Schools		01798 867324
Long Bostle Downland Soc		Gillian Brandt	01798 867276
MP Arundel & South Downs		Andrew Griffith	andrew.griffith.mp@parliament.uk
Midhurst & Petworth Observer		Nikki Jeffery	01243 534163
National Trust (Lavington Common)			01730 816638
Neighbourhood Watch		Michael Crickmay	01798 867486
Osteopath		Anna Shawcross	01798 867523
Oil Buying Syndicate		Derek Bradnum	derekbradnum@gmail.com
Petworth Food Bank			07501 921617
Pilates at Empire Hall		Nicky Capes	07990 517858
Seaford College			01798 867392
Three Moles		Ollie and Tom	thethreemoles.com 01798 861303
Thursday Club	Secretary	Diane Bellis	01798 867444
West Sussex County Council		General enquiries	01243 777100
	County Councillor	Tom Richardson	07463 785039
White Horse		whitehorsegrafttham.com	01798 867331
Yoga at Empire Hall		Deborah Albon	07790 867009



JACKSON-STOPS

PROPERTY EXPERTS SINCE 1910



“Seems like it was only five minutes ago this place felt as spacious as a palace.”

Downsizing, Upsizing, Extending?

If you are considering the sale of your property or need good advice, we would love to hear from you.

**Please get in touch with our team in
Midhurst to find out more**

01730 812357 midhurst@jackson-stops.co.uk
Market Square, Midhurst, West Sussex, GU29 9NJ