

GRAFFHAM PARISH NEWS

ISSUE 407

FREE

JANUARY 2025



Happy 2025 to all readers!

MP swings in to open our new playpark

Santa draws crowds to Christmas Fair



Graffham Parish News is published and distributed free each month to every household in Graffham and East Lavington by the Parish of Graffham with Woolavington.



Please support us If you enjoy reading this magazine, then please make a contribution towards its costs through a monthly or one-off online donation – just point your phone camera at this QR code or go to bit.ly/GPN-donation



Archives Back copies can be viewed online at bit.ly/stgarchive1

Subscriptions If you live outside the parish, you can receive copies by mail by taking out an annual subscription for £40. Contact the editors for full details.

Advertising We love our advertisers! If you are interested in being one of them, please contact Philippa Sanders (below) or email ads.graffhamparishnews@gmail.com

Deadline for February 2025 edition
17 January.

On the cover: Our MP Andrew Griffith (left) joined Playpark Project Lead Rachel Gerrett, Rec Chairman John Bracey and dozens of villagers young and not so young to open the new facility on 14 December.

Full story and more pictures on pages 4 to 7.

Contributions and contacts The editors are always pleased to hear from you at editor.graffhamparishnews@gmail.com

- Michael Blunt (right) 07711 997487
- Bill Barrett (left) 07443 501091
- Philippa Sanders 07853 921825



Copyright All content is © *Graffham Parish News* unless otherwise stated and may not be reproduced without the editor's written consent.

Printed by Parish Magazine Printing, Holsworthy, Devon EX22 6TD, UK.



Member Editor 2024 Award Winner 2022
Association for Church Editors

Writing from the Rectory: The time is now

Welcome to 2025 – a New Year, and one of significant anniversaries. First, the one thousand seven hundredth anniversary of the formulation of the statement of faith of the Christian Church at Nicaea in Turkey in 325AD, the Nicene Creed. Second, the relocation of our cathedral from Selsey to Chichester nine hundred and fifty years ago, with effective establishment of the Diocese of Chichester. And third, the one hundred and fiftieth anniversary of the rededication of our St Giles Church, following its rebuilding in memory of former rector Samuel Wilberforce.

We're being encouraged to remember events taking place a long time ago – 1,700 years, 950 years, 150 years before our own time. To do so well, let's consider time for a moment.

Time is not a simple concept. In one theory of time, there is no 'now', as the future we are anticipating turns into the past we are remembering in an instant. In a second theory, there is only 'now', the present moment, when the past has been and gone, and the future is yet to come. The first theory is called Chronos time, the second is Kairos time.

Chronos time can make people

▶ *Continued on next page*



'Kairos' moments: The Incarnation of Christ and the Visit of the Wise Men at Epiphany, representing the manifestation of Christ to the world, reimagined by a paper artist in Petworth House Chapel this Christmas.



Priest in charge: Reverend Vivien Turner
hello@stgilesgraffham.org 01798 867199

Churchwardens: Ginny Barrett 01798 867113
Cindy Bradley 07787 516522

Safeguarding Officer: Howard Pescott
01798 867029 safeguardinggraffham@gmail.com



stgilesgraffham.org



@stgilesgraffham

► *Continued from previous page*

feel very much under pressure, looking for a point of rest which never comes, always chasing the next thing to do. Kairos time however is time that stops us in our tracks. It can come upon us unexpectedly, a significant moment which drives all other considerations out of the window, or it can be entered by simply allowing ourselves to let go and be still. Sometimes a Kairos moment is of such great significance it is worthy of remembrance and celebration or solemn acknowledgment. Some say remembrance of the Last Supper is the quintessential example of this. Others have a sense of this Kairos moment being recaptured and brought into the present moment in celebration of each Eucharist. However it is understood, the letting go and being still that Eucharist brings about is time fulfilled for all those entering this joy.

The three anniversaries being remembered in 2025 were also significant Kairos moments in the life of the Church, honoured as defining a faith which is life-giving, as establishing a centre from which this faith can be proclaimed, and as rededicating a people to love and serve this local village community.

We remember them in the light of the years which have passed between then and now, the times the Church has upheld its vocation with integrity and the times it has fallen short, requiring its serious penitence. This honest reflection enables the possibility of new Kairos moments redefining our own faith and inspiration to service in the name of Jesus Christ today – who is the key to understanding what God means, who helps us to understand what we are, who is the embodiment of Kairos time, who is the living still point who draws us into his being just exactly now. And who is the same, yesterday, today, and forever.

Happy anniversary!



Reverend Vivien

Need a helping hand...? Graffham with Woolavington's Parish Priest Discretionary Fund is available to help any parishioner in real financial need. Funded by donations to St Giles, it's already come to the rescue of multiple individuals and families in the village hit by the cost of living crisis. Stretched to pay for something essential? Struggling to pay for your child's school extras? No cash for urgently needed groceries? It could be the answer to your prayers. Contact Rev Vivien to find out more.



Winter wonderland: Graffham received a rare light dusting of snow on the morning of Thursday 21 November. Thanks to © Martina Schneiderova for posting this picture on the Facebook page Beautiful Sight In and Around Graffham.



Rachel Gerrett thanks everyone who has contributed to the playpark project.

Playpark reopened just in time for the holidays

Just in time for the Christmas holidays, our MP Andrew Griffith was surrounded by a posse of Graffham children as he cut the ribbon to declare the village's new playpark officially open on Saturday 14 December. As soon as the scissors snipped through the tape and the gate to the play area opened, the youngsters rushed through to try out all the new treasures there. Their verdict? Fab!

The event, attended by dozens of villagers ranging in ages from toddlers to octogenarians, was the culmination of some three years of fund-raising rounded off by three months of groundworks and construction.

Around £65,000 has been raised in cash and kind to cover the cost of the upgrade so far, leaving another £15,000 or so needed to complete the final phase of the project. Graffham Parish Council set the ball rolling with a £20,000 grant from its Community Investment Levy fund. Villagers and friends have collectively pledged



MP Andrew Griffith cuts the ribbon to declare the new playpark open.

£15,000 through the playground's Go Fund Me crowdfunding campaign, topped up by £3,000 of Gift Aid, with further contributions from Graffham Tennis Club and Graffham Festival 2024.

Ensuring the project came to life was a generous 'donation in kind' from Glen and Asta Manchester – in the form of the loan of members of the workforce rebuilding their new home Selham House. They removed all the old equipment and fence, carried out all the ground works and supplied the woodchip, new fencing and



gates. Just ahead of the re-opening, the Lottery Fund gifted £16,000 towards the project, taking it well towards its final target.

Assuming the final £15,000 needed comes in, this will see a playhouse for toddlers, a seesaw and a big multi-play scrambler added to the newly installed swings, zipwire, tunnel, slide, roundabout, climbing frame and more, all built in natural materials by Playsafe, from nearby Elsted.

Rachel Gerrett, who has been leading the team behind the initiative, thanked the many “amazing” individuals and groups who had contributed so far, including:

- Everyone who had given financial and practical support.
- Giovanni Soffietto, who had kicked off the fund-raising drive.
- James and Bianca Pitt, of neighbouring Lavington Stud and Estate, who had helped with tree works and hedge trimming.
- South Downs National Park, which had donated five elm trees.
- Peter West who built a log bench and the signage.
- The Tupper family who donated a memorial bench.

Graffham Recreation Ground Committee Chairman John Bracey in turn paid tribute to Rachel for leading the project and bringing it to fruition while at the same time combining her role as Mum to two young boys with a demanding full-time job: “She’s delivered something of which the entire village can be incredibly proud.”

► *Continued on page 7*



WOODCOTE

An exquisite restaurant

with beautiful rooms

at the foot of the downs

DINE, EXPLORE, STAY

THEWOODCOTE.COM



► *Continued from page 5*

Andrew Griffith, MP for our Arundel and South Downs constituency, described the project as a perfect example of an initiative that brings the community together to do something really worthwhile.

As the last of the coffee, squash, sausage rolls and mince pies served by a kitchen team coordinated by Gillian Charlesworth were downed, a welcome few rays of sunshine burst through the clouds after days of dismal grey weather – and the kids were already asking if they could go back to the new playpark after lunch.

Could you help complete it?

Almost 30 Graffham families have contributed a total of £15,000 to the Go Fund Me drive to raise funds for the new village playpark. The same amount again is still needed to complete the project.

You can contribute by scanning this QR code with your smartphone



Or type gofund.me/546c06a7 in your web browser. As a charity, the project is eligible for Gift Aid, which adds 25 per cent to everything you donate – so please indicate this if you are a UK taxpayer. Any funds collected beyond the target will go towards more equipment and its on-going maintenance.



Trying out the playpark's renovated climbing frame and new swings.

GRAFFHAM HEALTH SUPPORT ASSOCIATION

The HSA volunteers will be knocking on doors throughout the neighbourhood in March 2025 to encourage current members to renew their subscriptions and to invite village newcomers to join.

From 2025 we will be giving new and existing members the option of paying their membership by Standing Order. Members will be approached by email or offered a Standing Order form by the 'membership collectors' when they knock on doors, as usual collecting subs.

If you would like any further information on this, please do get in touch with Zoe Jones (Treasurer) zoe@graffham.net or Tracy Rowe (Membership Officer) tracyjanerowe@hotmail.com

Being part of the HSA delivers a number of key benefits:

- We will endeavour to provide transport to and from medical appointments (authorised by the NHS) from a stay in hospital to a routine dental check-up, when you can't drive yourself for whatever reason.
- Free collection from Petworth Surgery of your prescriptions, which are then dropped off at Graffham Village Shop for you to pick up from there, saving you time, petrol money and exhaust fumes.
- Loan of a wide-range of medical equipment - crutches, walking sticks, wheelchairs, walking frames, bathing aids and so on.
- Subsidised foot health clinics and exercise classes at the Empire Hall.
- Help, for those in need, with paying for spectacles or dental care.

All this for £5 a year for each adult member - while under 21s can join for free.

Some 200 residents are currently on HSA's books - around half the village's adult population.

The association in one format or another has been caring for the community for more than a century, providing services not available under the NHS. In 2024 alone, the HSA provided members with some 170 trips to medical appointments and around 25 people have regular monthly deliveries of prescriptions to the shop, while every week a group of "seniors" has taken advantage of its subsidised "ease-into-exercise" sessions.

Organising lifts is shared by committee members on a rota basis, with just one number to call to request transport - **07391 802541**.

The lifts to medical appointments are carried out by volunteers from among its membership ranks, on a voluntary basis. They are recompensed towards their fuel expenses annually.

More drivers are always needed, so if you would like to help, please call the transport phone number 07391 802541 and a HSA member will call you back.

Parish council to discuss speed limit reduction

The pros and cons of seeking to reduce the current 30 mph limit within the current speed restriction zone covering most of the village to 20 mph is expected to be on the agenda for Graffham Parish Council's first meeting of 2025 – at the Empire Hall on Wednesday 8 January at 7 pm.

The suggestion was aired at its final session of 2024, on 6 November, prompted by the decision of Graffham Infant School to ask West Sussex County Council to lower the limit around its entrance to 20 mph. At that meeting, parish councillors asked the community to give their views on whether that slower restriction should be extended to everywhere in the village currently covered by the 30 mph limit.

While most of the comments from residents of the villagers posted on Facebook's Graffham Noticeboard since then have broadly been in favour of traffic calming, a number also suggested varying limits along our roads and expanding restrictions beyond the current zone.



Parish councillor Rachel Gerrett, responding on Facebook, pointed out that the proposal currently being discussed was purely focussed on reducing the limit in the current zone because advice received was that, as this was the simplest and most cost effective step, it was most likely to be supported by the highways authorities.

She added: “There are options we can explore beyond this, but they are far more involved and would need cooperation from other neighbouring parishes, their communities and involve more cost in terms of changes to signage, road markings, traffic calming, enforcement and higher approvals are therefore needed. So, we are taking a step-by-step approach.”

If you have views on the issue, send an email ahead of the 8 January meeting to clerk@graffham-pc.uk, remembering to include your name and address.

More road closures planned for this month

Several roads in and around Graffham and East Lavington will be closed for a few days this month to allow various works to be carried out.

Our West Sussex County Councillor Tom Richardson said: “I know closures are a

► *Continued on page 11*



Graffham Empire Movies

Bringing cinema to the village – and raising funds for our Empire Hall



Based on a true story, when Edith and fellow Littlehampton residents begin to receive wicked letters full of unintentionally hilarious profanities, foul-mouthed Rose is charged with the crime. Suspecting that something is amiss, the town's women investigate. Filmed in Arundel and other nearby locations. Certificate R (ripe language!). 102 mins.

Saturday 25 January **Empire Hall**

Doors and bar open 7pm for 7.30pm start Interval ice creams

Tickets – £10 adults – from [ticketsource.co.uk/GEM](https://www.ticketsource.co.uk/GEM) or at the door

FUTURE ATTRACTIONS



Saturday 15 February



Saturday 29 March

► *Continued from page 9*

pain, but it is finally the work we've all been chasing and nagging highways about for the last couple of years, so it will be worth it! All the patching works and drainage works are in preparation for full surface dressing of all the local roads.”

This month's road closures scheduled include:

- 13-14 January – Selham Road for ditch clearance near to WL Wests.
- 13-16 January – Norwood Lane, past Old Park Barn, to dig down and investigate a void and repair it if possible.
- 22-28 January – Ambersham Hollow Road for patching/surfacing repairs.
- 23-27 January – Selham Road again, for patching/resurfacing repairs between WL Wests and Lods Mill Cottage (likely to be one or two days only).

Bin collections two days later after festivities

Bin collection days in Graffham will be a couple of days later than usual in the weeks after Christmas and New Year – on Fridays 27 December and 3 January then on Thursday 9 January before reverting back to Wednesdays from the following week. The garden recycling service will be suspended from Friday 20 December to Monday 6 January.

Chichester District Council has issued a reminder that the following festive items CAN be recycled in your red bin:

- Greetings cards and envelopes, and empty chocolate advent calendars.
- Wrapping paper and empty cardboard tubes but NOT shiny or metallic wrapping paper, ribbons or bows.
- Mince pie cases and other foil, plastic confectionary tubs and meat trays but NOT plastic film and wrapping.
- Cardboard boxes and packaging EXCEPT polystyrene.

You can use the garden recycling service to recycle your Christmas tree – or St Wilfrid's Hospice will do it for you in return for a donation. See www.stwh.co.uk

Petworth House closes for three weeks

Petworth House and its Pleasure Garden will be closed for three weeks from Monday 6 January until Friday 24 January while its fire safety system is updated. At the same time, cleaning and conservation work will be carried out on its art collection, and its shop and other areas refurbished. Its deer park will remain open as usual.

Consultation on Lavington plans now underway

Further details of the future plans for Lavington Stud and Estate were released in mid-December, as previewed in our previous edition – with 10 January the deadline for providing your feedback.

James and Bianca Pitt, who bought the 650 acre property four years ago, outline the changes they would like to make to it in a pamphlet posted to every home and business in Graffham and East Lavington in mid-December and in a special section of its website lavingtonestate.com. The consultation exercise is part of a planning pre-application process.

As the pamphlet says, their aim is “to create a diverse, modern and sustainable rural community that creates a well-cared-for, healthy and economically self-sufficient rural estate where nature recovery, regenerative food production and well-being provide the focus.”

When they bought Lavington, development approval had already been granted to convert the redundant agricultural buildings at Calloways into 10 homes and replace a bungalow there with another new house.

James and Bianca said: “As part of our vision for the estate and to secure its long-term viability, we have reviewed the existing planning permission for Calloways and sought ways to improve the offering for both the local community and the South Downs National Park Authority.”

They propose reducing the number of homes there to five, with the remaining



At Lavington’s Home Farm (the former stud stables, barns and offices), some of the more unsightly 20th century buildings, marked with red dots here, would be demolished to make way for a new estate house. The blue dots indicate buildings that would be converted into holiday lets. The purple dot is where estate offices would be housed and the barn marked with the yellow dot would become a multifunctional space primarily for education.

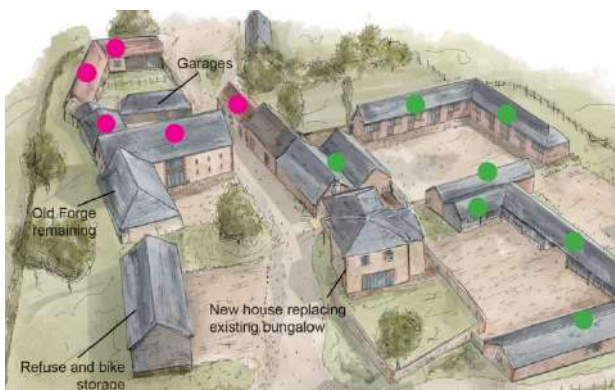
buildings converted instead into seven small units for local artisan craftspeople and not-for-profit organisations. If this proposed change is not supported, then the existing approved plan for 11 homes at Calloways would be followed through.

Alongside this, James and Bianca are also putting forward proposals for the old stud buildings, now known as Home Farm. As previewed last month, a number of the more unsightly 20th century constructions there would be demolished to make way for a new super eco-friendly estate house. Some of the other buildings there would be converted into holiday lets and estate offices, with the barn repurposed primarily for educational use, with one or two events a month.

As with the existing Calloways planning authority, access for both developments would be via Graffham. The consultation document points out: “Whilst the proposals would result in a modest increase in daily vehicle movements, this is considered negligible and well within the daily fluctuations on the local highway network. West Sussex County Council Highways raised no concerns over the proposed increase in traffic movements.”

James and Bianca said: “We welcome your thoughts and your feedback will be carefully considered as we proceed with a planning application in the new year.”

To find out more, go to www.lavingtonestate.com. You can submit your views on the proposals by 10 January there, or by writing to Freepost Consulo Limited (no further address details or stamp are needed).



Instead of the 11 homes approved by the planning authorities for development at Calloways, the aim now is to convert the buildings marked with pink dots here into five homes and those highlighted with green dots into units for artisans and not-for-profit organisations.

The Lavington Stud and Estate proposals will be on the agenda for discussion at the meeting of Graffham Parish Council on Wednesday 8 January at 7pm in the Empire Hall. Members of the public are welcome to attend.

Graffham Garden Group

2025 diary

30 Jan	Thu	12.30 for 1pm	New year lunch
<p>£19 a head, two courses including wine/beer, coffee and mints Booking sheet is in Graffham Village Shop until 21 January to make your meal choices:</p> <p>Mains: Fish pie, beef lasagne or vegetable lasagne Puds: Apple and cherry crumble or chocolate, pear and almond pud</p> <p>All members and partners warmly welcome New memberships or renewals £2 on the day Payment in cash on the day.</p>			
21 Mar	Fri	7pm	AGM
10 May	Sat	10am	Spring plant sale
12 Jul	Sat	2.30pm	Flower and produce show
<p>The four categories for the photographic section will be:</p> <p>📷 All creatures great and small 📷 Portrait 📷 Nature at Its best 📷 Landscape/seascape</p>			

All events in the Empire Hall.

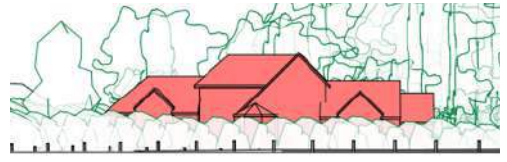
In addition, there will be garden visits which will be announced at the AGM and in *Graffham Parish News*.



War memorial community garden work parties

Last Saturday of every month for just one hour from 10am

No gardening experience necessary!



Architect's sketches showing how the proposed new Tangletrees (left) would have looked from Graffham Rec, against the current building (right).

Tangletrees owners hoping for third time lucky

The owners of Tangletrees, immediately north of Graffham Recreation Ground, are to try for a third time for permission to replace the building with a new, eco-friendly house after the South Downs National Park and Chichester District Council planners blocked their revised plans for the site, almost exactly a year after rejecting the original application.

Ian and Julia Forrest had sought approval to build a smaller house than previously proposed, but still slightly more than 50 per cent bigger than the current one. By swapping parcels of land designated for residential and agricultural use, its footprint would have been turned by some 90 degrees from how it was originally envisaged and set back further from the sports field. The lower ground level there would have reduced its size as seen from the south, with its height appearing below that of the current building. The two barn-style units connected by a central entrance way would have come with a host of eco credentials.

In their ruling, posted on 20 November, the planning authorities said the proposal “by reason of its siting, design, scale and appearance would result in a dominant and incongruous form of development which would be out of character with the pattern of development and local vernacular of the area failing to conserve and enhance the landscape character of the South Downs National Park”.

While the Forrests have six months from the date of the ruling to decide whether to appeal to the Secretary of State for Levelling Up, Housing and Communities against the verdict, Ian said they aimed to make a fresh application for approval.

He explained: “We’ll be adapting our proposal to address the issues that caused the planners to refuse it previously. We do appreciate that Tangletrees is sited in such a special spot and we do want it to be a house that does Graffham proud. Once the revised plan comes together, we would be very happy to share it with all neighbours and villagers and we will do our best to take on board any concerns they may have about it, so please do get in touch with us so we can discuss it with you.”

SPECIALISING IN RESTORATION OF TRADITIONAL HERITAGE BUILDINGS

All aspect of roofing and construction completed

Family run business with over 30 years of experience

- ✓ Tiling
- ✓ Slating
- ✓ Flat roofs
- ✓ Repair works
- ✓ Chimney works
- ✓ Lead works
- ✓ General Building



CONTACT

✉ info@newheightsroofing.co.uk
☎ 07508 468418



📍 KLE Decorators Ltd
Unit C12
New Barn Farm
Funtington
Chichester
West Sussex
PO18 9DA

☎ 07880 317071

✉ hello@kledecorators.co.uk
🌐 kledecorators.co.uk

We are totally committed to the finest quality of painting and decorating that there is.

Be it the high-end painting & decorating of apartments and offices, refurbishment of kitchens & bathrooms, full interior refurbishments, or renovation works on a listed building, we ensure that all of our work is carried out thoroughly, with due diligence by all our painters & decorators.

Our decorating services include:

- Painting
- Spraying
- Wallpapering
- Specialist coatings
- Traditional paintwork
- Feature walls
- Coving
- Plaster and render repairs
- Woodwork repairs
- Special effects such as graining, marbling, murals



Planning applications and decisions

Details for Graffham and East Lavington filed with the South Downs National Park since our previous edition (for details, see bit.ly/sdnp-planning)

Planning applications

Tinkers, The Street, Graffham GU28 0NL: Proposed garden room and link extension to main dwelling with re-landscaping of rear yard. *SDNP/24/04894/HOUS. Received 25 Nov 2024.*

Planning decisions

Red Oak, The Street, Graffham GU28 0NP: Extensions to include porch, dormer windows, roof lights and roof lanterns and alterations to existing materials palette. *Approved. 22 Nov. SDNP/24/03694/HOUS*

Denham, Graffham Road, East Lavington GU28 0QF: Erection of porches and single storey rear extension. *Approved. 29 Nov. SDNP/24/04120/LDP*



THE MARTIN SEWELL
BUILDING COMPANY

Your vision,
our expertise.
Building your dream
home, together

An Award Winning,
Chartered Building Company



ABOUT US

Having worked in the Sussex area since 1985, our dedicated & highly skilled team are passionate about delivering outstanding results & creating dream homes for our Clients.

MSBC has built a reputation based on an ethos of openness, strong communication and honesty.

WHY CHOOSE US?

Experienced in delivering a wide range of high quality building projects, from bespoke new builds to the sensitive renovation of listed buildings or extensions and refurbishments for private & commercial premises.

CONTACT

01243 542 056
www.msbc.uk.com
admin@msbc.uk.com

AWARDS



INVESTORS IN PEOPLE
We invest in people Gold



From Town Hall: Trees for the South Downs

Our representative on Chichester District Council, John Cross, provides his regular update on his key issues of focus right now.



The UK's first national parks were created 75 years ago last month. There are 15 of them across the country – and our South Downs National Park (SDNP) is the youngest, formed in 2010. SDNP welcomes not only a new CEO, Sion McGeever, in its 15th year but wants to celebrate the 75 years by helping 75 schools to add wildlife havens to their grounds.

These ReNature Grants, up to £1,000, could be used for planting a wildflower meadow, planting trees, digging a pond or installing bee and bird boxes. Applications need to be lodged by 1 July and will be awarded on a first-come first-served basis. See southdownstrust.org.uk/national-parks-75th-birthday-renature-fund-for-schools/ for more details – and good luck to any schools from around here that apply!

SDNP has had its own Christmas present in 2024, having just been given £90,000 through the South Downs National Park Trust by the OSB financial services group. This generous gift will be used to plant thousands of new trees, create new wildlife meadows to support pollinators and restore wetlands to help birds, mammals and insects flourish.

You may have read in the national press about the achievements of the tree planting of SDNP. In summary the target to plant 100,000 trees by 2025 is on target. Some 400 new disease-resistant elms will be planted, along with a further 20,294 other trees this winter – including approaching 650 in Graffham Down Trust's reserves and half a dozen at Graffham Recreation Ground's new playpark.

The call has gone out for new tree planting applications for this year. Just Google 'South Downs triumph for trees' for details – and, again, good luck to those who apply from around here.

Finally, this month SDNP is at the advanced stage of completing an update to its local plan, opening it to public comment. This is an important document as it provides the guidelines for planning policy and lays out land supply for the coming years. All parish, district and county councillors will have been informed and invited to give their views on it, as will all members of the public. The document should be available to view on the SDNP website by the end of January.

I wish everyone a prosperous and healthy 2025.

Graffham's four-legged link to TV's Burns show

Alan Titchmarsh's *Love Your Weekend* television show on ITV on Sunday morning 19 January will have a Graffham connection. Among the guests lined up to appear are Liz Bradley, daughter of Betty Bradley, of *The Street* – along with her terrier Kirsty, who is great-great-granddaughter of Betty's much loved Sam.

Betty and her late husband Maurice were familiar faces walking their dogs along the village's roads and paths – a love that has passed down the two and four legged generations.

To mark Burns Night, which is on the Saturday after the show is broadcast, its researchers tracked down the world's leading breeder of Scottish Terriers (originally known as Aberdeen Terriers) – Liz, who her Mum calls Elizabeth. She now lives in Somerset when not travelling the world judging, competing, and usually winning, dog shows. She turned to dog breeding after retiring as a naval



Betty's beloved Sam.

officer, inspired no doubt by Betty and Maurice's success in breeding a Scottie litter of their own.

Betty's last Scottie was Sam, more correctly known as Champion Brueik Man in the Moon. A champion himself, his gleaming coat was much admired. As a breed Scotties need a great deal of grooming, and an ability to enjoy the grooming process, as well as performing.

Thursday Club to hear Slow Grown update

Graffham's Thursday Club is to have an update on progress at Slow Grown Farm, on the borders of the village and Heyshott from its Katie and Brett Sacks at its first meeting of 2025, on Thursday 9 January in the Empire Hall.

Property watch

Homes for sale locally, posted at [rightmove.com](https://www.rightmove.com) since our previous edition:

High Street, Duncton GU28 0LB: Detached bungalow, three bedrooms, bathroom, sitting room, conservatory, kitchen. 85 sq m (913 sq ft). Double length garage. Garden of 0.3 acres. Guide price £465,000. *Barrington & Co, Petworth 01798 217950. Listed 22 Nov.*





Helen shows off some of the specially commissioned art she was presented with as she bade farewell to our Lavington Federation Schools after 17 years as head (left), after Chair of Governors Giovanni Soffietto paid a moving tribute to her.

School report: Time to say goodbye



Outgoing Head of Graffham Infant School, Helen Martin, reports on the end of her final term at its helm

Farewell and thanks Thank you for all of your kind words as I conclude my Headship after 17 years – and for the incredible generosity of the school and wider community for my beautiful gifts which included some commissioned pieces of art (by Dom Kenway and Hannah Watchorn), an engraved trowel and some wonderful winter blooms. We had a wonderful celebration ‘farewell’ evening at Duncton



The banner Helen made for Graffham Infant School

Junior School on Monday 16 December, attended by many friends of the federation, with a moving speech from our Chair of Governors Giovanni Soffietto. It was really lovely to see so many people who I have been fortunate to cross paths with during my time at the schools.

My gifts to both schools are banners that I have made. Our Year 6 children will take their banner, a replacement for the existing one, to the service they attend at Chichester Cathedral before moving on to senior school. Graffham year 2 children are welcomed in a newer tradition by Rev Vivien to St Giles Church for their own leavers service from our Infant School. They have no banner to carry – so it has been a privilege to sew them a new banner. It will hang in our school until it is used each July.

Nativity and Christingle We have had a fantastic Christmas couple of weeks with our Christmas Nativity, staged at St Giles Church, being a highlight for all –

children and parents alike. A huge thank you to Rev Vivien and churchwarden Ginny Barrett for supporting this performance and our rehearsal schedule.

Our Year 1 and 2 teacher Mike Lloyd led all of the preparation for the singing, performances and words learnt by every child and we thank him for this. Our staff team at Graffham, led by our Reception/Year 1 teacher and Assistant Head Sarah-Jane Wethered, were fantastic at caring for each child through their costume choices, learning their parts and performing in the beautiful space of the church.

It was a huge highlight for me to be part of these final performances before stepping down as headteacher, and I loved being able to welcome guests from the parish to our dress rehearsal, and for our school community to come to both performances. We finished the term with our Christingle service at St Giles also.

Welcome to new head Charles I know that you will all wish our new Headteacher, Charles Beckerson, a warm Graffham welcome as he begins his role in January.

Starting school soon? If your child is starting school in September 2025, the deadline for applications is Wednesday 15 January 2025. Our team would be delighted to show you around the school. Contact the office to book an appointment, on office@graффhaminfant.org.uk or 01798 867324.

Seaford opens reception class in September

Seaford College Prep School is to add a Reception Class for children aged four or five from September in the latest phase of its continued growth. Headmaster John Green said: “This addition is fantastic news for parents and will undoubtedly become a sought-after feature of our thriving community.” Head of Prep School Alastair Brown added: “Our Prep School offers a nurturing environment where



children flourish. With after-school wrap-around care, small class sizes, personalised attention, and a diverse curriculum combining academic excellence with creative and practical learning, every child feels valued and supported, ensuring a seamless transition into senior school with a strong foundation for future success.”

Parents and children interested in enrolling in the new Reception Class are being invited to its open morning in January to experience the school in action. Children can also join Reception taster events throughout the spring term. For more information or to register interest, contact Hayley Richardson, of Seaford Prep School Admissions, at hrichardson@seaford.org.

DORSET HOUSE SCHOOL

INDEPENDENT PREP SCHOOL

FOR CHILDREN FROM RECEPTION TO YEAR 8



'BE THE BEST YOU CAN BE'

*Over 40% of 2024 leavers
won awards to a wide range of senior schools*

Come and see what sets us apart!

Morning minibuses and after school activities

To find out more, please call 01798 831456

or visit: www.dorsethouseschool.com



Bill's bygones: Paula, Puttick, proceeds

A regular feature in which joint editor Bill Barrett looks back at what was happening in the village and the wider world this month in the past.

10 years ago – January 2015: A memorial service is held at St Giles for Paula Burke, founding editor of *Graffham Parish News*, who died just before Christmas, aged 89. Proceeds of the Christmas Fair at the Empire Hall amount to £4,462. At Church Hill, Alan Sargent runs a masterclass in pruning apple trees, courtesy of Diana and George White. Work progresses on the extension to Graffham Village Shop. The Burns' Night celebration is held at the Empire Hall, where Graffham Empire Movies screens the unusual Saudi production *Wadjda*. The Paris offices of the French satirical magazine Charlie Hebdo are targeted by terrorists. Deaths of Ethel Lang, aged 114, the last UK citizen to be born during the reign of Queen Victoria, actors Geraldine McEwan (82) and Lance Percival (81), Olympic equestrian Richard Meade (76) and Tory politician Leon Brittan (75).

25 years ago – January 2000: Graffham Rustics announce a double bill for their spring production – Gilbert & Sullivan's *Trial by Jury* and Victorian melodrama *Hiss the Villain!* – with new talent encouraged to contact Marilyn Mountford or Philip Trower. Proceeds of the Christmas Church Sale at the Empire Hall amount to £3,039. After a spate of violent crime in the village, furious Cocking residents warn the police they will set up vigilante groups if no action is taken – three people are arrested a week later. *Slimming World* holds its annual awards ceremony at The Grange Centre, Midhurst, hosted by comedian and Eastenders actor Mike Reid. Homicidal Manchester GP Harold Shipman is sentenced to life imprisonment. Deaths of Graffham villager Arthur Puttick (78) and cricket journalist EW "Jim" Swanton (92).

50 years ago – January 1975: David Grant, latterly vicar of Oving and Domestic Chaplain to the Bishop of Chichester, is inducted as Rector of Graffham and Woolavington. Former Graffham farrier John Behan marries Shirley Butcher at the Sacred Heart, Petworth. Proceeds of the Christmas Church Sale at the Empire Hall amount to £524.87 – £100 more than in 1973. Colin Docker is consecrated as Bishop of Horsham and Donald Coggan enthroned as Archbishop of Canterbury. International Women's Year is launched in the UK by Princess Alexandra and Barbara Castle MP. The 1974 Anglo-French Channel Tunnel scheme is abandoned. Heiress Lesley Whittle is kidnapped by Donald Nielson. Brian Clough is appointed manager of second division strugglers Nottingham Forest.

*Unmissable for fans of: JONI MITCHELL, PAUL SIMON,
JOAN ARMATRADING, RANDY NEWMAN, DEBBIE HARRY*



ED BLUNT

*"His songs are wry and
completely brilliant"*
CHRIS DIFFORD



HOLLIE ROGERS

*"A magnificent and
powerful voice"*
SUZANNE VEGA



DAISY CHUTE

*"A voice like the
first rays of sunlight"*
BRISTOL 24/7

THE BIG BANG LOVE! TOUR

**AN EVENING OF SONGS AND STORIES FROM
THREE ACCLAIMED SINGER-SONGWriters**

HARMONIES ★ HUMOUR ★ OUTSTANDING MUSICIANSHIP

"One of the best live folk music experiences available" FATEA MAGAZINE

**SATURDAY 11TH JANUARY
EMPIRE HALL, GRAFFHAM**

DOORS: 7PM, MUSIC: 7.30PM

TICKETS: www.empirehall.org.uk/tickets

Music, movies and reels start Empire Hall's year

The Empire Hall is gearing up for a busy new year with gigs galore and some fantastic films, besides its regular busy schedule of exercise, yoga, pickleball and badminton sessions and more.

Opening the 2025 programme are Ed Blunt, Daisy Chute and Hollie Rogers, stopping off on Saturday 11 January as part of their nationwide Big Bang Love! tour – returning after their standing ovation, sell-out show a year ago. Only limited numbers of tickets remained unsold as we went to press – so book early to avoid missing out! See opposite page.



Next month, on Saturday 8 February, the band True Strays will be bringing their own brand of Americana roots, blues and rock and roll. Based in Bristol, they are fast carving out a niche of their own on the UK Americana scene, drawing influences from classics like Muddy Waters and Howling Wolf, Jimi Hendrix, The



True Strays play on 8 February.

Doors, Fleetwood Mac, Pink Floyd and Nirvana. Promoter Jim Kirke says: “True Strays are a must-see band. Their music is a cathartic celebration of alternative roots Americana and blues rock. They have completed countless UK tours, and survived 70+ festival shows, from Green Man to Glastonbury. See next page.

Rounding off the hall's music season, on Saturday 22 March, is what is widely seen as the best Robbie Williams tribute act – Daniel Budd and his band.

On 18 January, the Empire Hall hosts the village's traditional Burns Night Celebration, complete with haggis and reeling. There are practices on Sunday afternoons in the run up to dust off your steps. See page 34.

Graffham Empire Movies meantime has three fantastic features lined up for the new year – *Wicked Little Letters*, “the British comedy of the year” on 25 January, the moving true story *One Life* on February 15, and the tender, laugh-out-loud *Thelma* on March 29. See page 10.

On 4 April, ‘Captain Concorde’ Mike Bannister ‘lands’ the world's only supersonic airliner back at the Empire Hall after his sell-out first ‘flight’ there in October (see page 36).

For tickets for Empire Hall events, go to www.empirehall.org.uk/tickets

TRUE STRAYS

Saturday
8th February

Empire Hall, Graffham,
Petworth, GU28 0QB

7.30 for 8.00pm

The True Strays are a vintage loving, blues fuelled, dirty rock and roll band. Their live shows are a joyous hoedown of huge bass driven riffs, a howling tornado of resonator guitar, cacophonous drums and soaring Hammond organ.



www.truestrays.com

"Their creations have vitality, it's more than just words and music, they pack a real punch and make you sit up and take notice..."

– Blues & Roots Radio

"Rockin' blues at it's best."

– Swingamajig



"A hip-shaking barrage of blues rock n roll."

– Clunk Magazine

Tickets from £15 plus booking fee through www.empirehall.org.uk/tickets

Graffham Parish News' jocund January quiz

Ten quick fire questions from Bill Barrett to test your local, topical and wider general knowledge. Answers on page 55 (no cheating!)

- 1 Charles Beckerson has replaced who as what in Graffham and Duncton?
- 2 In which village's church did Prunella Scales and the late Timothy West renew their marriage vows in 2003: [a] Birdham, [b] Oving, [c] Pagham?

- 3 Seaford College inspired alumnus Anthony Buckeridge to write 24 humorous children's novels about which schoolboy character?
- 4 How many dioceses are there in the Church of England: 42, 142 or 242?
- 5 Who is the current Princess of Monaco: [a] Charlene, [b] Kylie, [c] Sheila?
- 6 What is the cube root of 8,303,765,625?
- 7 What was the name of the flower-eating cow in *The Magic Roundabout*?
- 8 According to the TV ad, since when have Lindt been "master chocolatiers"?
- 9 Which James Bond film featured a pair of hand-holding assassins called Mr Wint and Mr Kidd?

- 10 Which group had a hit single with *January*, released in January 1975?

Graffham now has two Foodbank drop-off points

There are now two drop-off points in Graffham to leave contributions to Chichester District Foodbank – which also supports the needy in Midhurst, Petworth and their surrounding villages, including our own. Baskets for giving items are now Housed at All Saints Chapel, directly opposite Graffham Village Shop, and at St Giles Church. Items currently in most need include:



- Cooking oil.
- Dried pulses.
- Flour.
- Gluten free items.
- Hot chocolate.
- Jam, marmalade, Marmite.
- Ketchup and sauces.
- Ready-made sauces.
- Rice pudding or custard.
- Sandwich paste.
- Shampoo / conditioner.
- Shaving gel and razors.
- Tinned fruit.
- Tinned meat and veg.
- Tinned or packet soup.
- Toothbrushes.
- UHT fruit juice.
- Vegetarian, vegan items.



Cakes and carats: Jill Knight serves a customer at the hectic home produce stand (left), while (right) Lady Young (second left) joined Sue Hill, Fiona Mackie and Yvonne Churchward at the jewellery and accessories stand.

Santa helps draw in crowds for Christmas Fair

Storm Darragh failed to put a damper on 2024's Graffham Christmas Fair, in the Empire Hall on Saturday 7 December. The windy and wet weather forced the cancellation of Petworth's Christmas Cracker event that very same day, but the numbers attending Graffham's equivalent were higher than for many a year, spurred on by the chance to meet Father Christmas (if you had been a good boy or girl all year). The gales blew him in from Lapland in record time and, thankfully for us here, meant Dancer, Dasher and Co had to delay their and his departure back, so we could enjoy his company and generosity, along with his elf, for longer than had been planned on his busy December schedule.

Initial accounts indicated that the fair took more than £5,000 on the day which, after deducting the few expenses, will make a happy contribution to our St Giles. The Christmas Fair is traditionally one of the church's biggest fund raisers of the year. And, as usual, virtually the entire village

► *Continued on page 30*





From the North Pole:
Santa and his elf did the rounds at the Christmas Fair before settling in his grotto for private audiences with the good boys and girls of Graffham and East Lavington.





Lucky numbers: The raffle team were kept busy



Bradley and Bradley: Cindy Bradley serves Betty Bradley (no relation!) at her festive stand.



Treats in store: Among those manning the café were, from left, Nettie Lanaghan, Bridget Lewis, Karin Skanberg, Angie Thornley, Nella Forsyth and John Edge.

► *Continued from page 28*

joined in one way or another – running a stall, baking cakes, cooking up preserves or sausage rolls, serving mulled wine, producing gorgeous gifts, donating bottles, washing up...

Almost £500 worth of delicious nibbles and drinks were served by a team of mainly Graffham bellringers at the fair ‘café’.

The home produce stall, overseen by Gillian Charlesworth with support from Gaye Foord, Diane Bellis and Jill Knight, mixed in almost £1,000, with the trestle tables groaning under the weight of copious culinary contributions supplied by Graffham’s finest cooks.

After many years as tombola (Mac)king, Sandy Macqueen handed over his decks of cards to Anthony Forsyth, Andy Patterson and Rich Sabin who quickly learned the ropes.

Games for the youngsters and young-at-heart were dreamt up by Di Bowden and family.

Cindy Bradley masterminded the auction, on a Twelve Days of Christmas theme, with support and encouragement from Henrietta Aparicio, Ginny Barrett and Holly Sabin – and promoted during the fair with a

special rendition by St Giles choir members of the carol of the same name, with words suitably adapted to reflect the prizes on offer. The auction attracted bids totalling almost £1,000.

Cindy also ran a stall offering offering festive finery she and daughter Beanie made themselves. Lady Young joined Fiona Mackie and Yvonne Churchward to run the jewellery and accessories stand – after generously donating seemingly dozens of handbags, cases and scarves herself. Almost 1,500 raffle tickets were snapped up, or sold on the day by Tim Crow, Gill Dover, Hugh Brown and others, at £1 each, lured by some wonderful donated prizes, while St Giles organist Brian Lanaghan played a selection of Christmas favourites on the piano.

Among the other stallholders tempting the visiting throng to part with their money were village potter Jo Morris, Graffham artist Sue Hill, Slow Grown Farm’s Katie and Brett Sacks, the Deer Project’s Ben Marks with his supplies of venison, Kerry Wood with her Christmas decorations, and Andy Beadsley with his garden ironwork.

Marie Bracey, who led the team of organisers, said: “The fair was a resounding success – with an enormous vote of thanks to all those, too many to mention here, who contributed in so many various different ways, from getting the hall ready and tidying everything away, preparing produce in advance, helping on the day, you name it.

It was an amazing community effort, making such a valuable contribution to our village life.”



Christmas Fair-ies: Stallholders and helpers who contributed towards another great Graffham success line up for a team photo before the doors open and Santa arrives.

Nature Notes: Not what they seem

A regular column by Sussex naturalist and wildlife guide Michael Blencowe, who can regularly be spotted in and around Graffham.

Back in 1980, the Puffin *Crack-A-Joke-Book* was a publishing phenomenon at my primary school. Every kid clutched a copy and tiny Tarbucks and miniature McIntyres prowled the playground looking for an audience.

Now I like a laugh as much as the next child but I took umbrage with one one-liner. Because as a bug lover I knew one thing for certain. A centipede with a wooden leg does not go 99-bonk. All centipedes have odd numbers of pairs of legs. In Britain they can have 15 to 101 pairs – but never 50 pairs. The joke should be ‘What goes between 29-bonk and 201-bonk?’

My childhood pedantic antics also ruined such films as *The Land That Time Forgot* and *1,000,000 years BC* during which I continually pointed out that humans and dinosaurs had never actually co-existed.

If I had really wanted to see humans and prehistoric monsters interacting I should have stayed at home and looked under the nearest flowerpot. Lurking there in the

Work parties 2024-25

Join us for some outdoor fun and exercise after which you can feel virtuous for having done something positive for your environment! Did we mention that coffee, tea and cakes are provided?

Meet at **Graffham’s St Giles Church at 9.30am**. You’ll need a pair of gloves, strong shoes or boots and warm clothing. Please email jimkirke@hotmail.com if you plan to come along and say if you would like a ride up so that he can arrange transport.



	5 January	Sunday	
1 February	Saturday	15 March	Saturday

dark is a creature more fearsome than any Tyrannosaurus. In fact, by the time dinosaurs ruled the Earth the centipedes had already been sitting on the throne for 300 million years.

Centipedes were among the first animals that crawled upon the land. Compare the flattened body structure of those fossils with today's back garden beasts and they really haven't changed a bit. And it's this 'If it aint broke don't fix it' approach that has helped centipedes remain one of our planet's



most successful carnivores for nigh on 430 million years. There are 57 different centipede species in the UK. You'll most commonly encounter the 3cm chestnut brown *Lithobius forficatus*. It has the same number of legs as a rugby union team (30) and will use the same combined brute force to tackle any opponent. Their chorus line of legs give centipedes incredible speed and manoeuvrability – they can even run backwards. For prey that can't outrun them it's the front pair of legs you have to look out for – the forcipules. These legs have been weaponised – converted into impressive fangs which inject paralysing poison.

For a creature with so many legs, it comes with one big Achilles heel. Unlike other leaf litter lovers centipedes lack a waxy covering and can dry out very easily. This design oversight has banished them to a nocturnal lifestyle in our dankest habitats.

For some folk, centipedes are surely the creepiest of crawlies but they play an important role as garden predators controlling plant pests. Some species even show surprising maternal affection to their offspring.

Look out for my upcoming article when I'll be explaining why millipedes don't go 999-bonk.

- You can find details of Michael's upcoming events, wildlife sightings and adventures or book him for a wildlife survey of your garden or land at:



GRAFFHAM EMPIRE HALL
**BURNS NIGHT
CELEBRATION**

SATURDAY 18 JANUARY
DOORS OPEN 7PM • DANCING STARTS 7.30PM

**DANCING TO THE SUSSEX PISTOLS
PIPING IN THE HAGGIS
BURNS SUPPER**

Cost £35 per person
Please bring your own drinks

Enquiries and to book please telephone
Harriet Rowntree on 01798 867536



Dance practices in the Empire Hall:
Sunday 29th December, 5th and 12th of January 2025
4-6pm, £2 per session

Out and about: Trees have ears

An occasional column by Jonathan Simons, amateur naturalist and font of useless knowledge on so many things obscure and without consequence.

Elder bushes give us so much – brimming white flowerheads in June, generous bunches of purple berries in the autumn and, in the winter, Jelly Ear, or *Auricularia auricula-judae*. This fungus can be found wherever there are aging elder trees – on the tracks climbing the Downs, Graffham Common, Perrott Lane... potentially anywhere!



Jelly Ear found growing on a local elder bough.

It sprouts from the dying bark, with brown wrinkled brown lobes very much resembling ears. I have also seen it on beech and box. In 2008 I found a pure white variety on Harting Down.

The scientific generic name *Auricula* places it in a class with other ear fungi. The specific name *auricula-judae* nails the ear down



The white variety found on Harting Down.

to that of Judas Iscariot who, legend has it, hanged himself on an elder tree out of remorse for betraying Jesus. It seems unlikely as the elder is not a very robust tree. The Judas Tree, *Cercis siliquastrum*, which is common in the Holy Land, was a more likely gallows.


Jelly Ear, or a closely related species, is a prominent component of Chinese cookery, usually referred to by the alternative name Wood Ear. It has little flavour of its own but adds a pleasing crunchy texture to any dish. Despite some ethical misgivings I have to confess to having gathered this regularly myself locally. The hunt is fun, and the crunch is good. I pick only hydrated and healthy ears, then rinse them, cut them into strips and dry them overnight in the airing cupboard. In the morning, they will almost have disappeared. I store the now tiny strips in an airtight jar. When it is my turn to make the risotto, I rehydrate them in warm water and they bounce back to life. I then add them to the mix for a bit of cooking. Beware, if instead you try frying them in butter and garlic – they will explode and jump out of the pan.

CONCORDE makes return 'flight' to Graffham

Fasten your seatbelts as 'Captain Concorde' Mike Bannister touches down at the Empire Hall to share his unrivalled insight into the only supersonic airliner – on a return 'flight' by popular demand.



Mike knows Concorde better than anyone – as its youngest first officer soon after it started flying in 1977 to commanding its final scheduled flight as British Airways' Concorde Chief Pilot 26 years later. Since then, he's become the best-selling author of the definitive Concorde book. At this fund-raising event, he'll give his unique perspective on a flying icon that



enabled Royalty, celebs, moguls and everyman to sip Champagne while travelling at almost 25 miles a minute. He'll share videos and photos from his personal library, swap anecdotes with *Graffham Parish News* editor and former British Airways Chief Press Officer Michael Blunt and take questions from the audience. The first of these events, in October, was sold out twice over, receiving rave reviews:

'A tour de force in every respect' 'A triumph' 'Excellent, fascinating, amusing'

EMPIRE HALL, GRAFFHAM GU28 0QB
FRIDAY 4 APRIL 2025 7 FOR 7.30PM

Tickets £15 each from www.ticketsource.co.uk/GEM

Bar offering drinks and Concorde-inspired snacks.

All profits towards the maintenance of Graffham Empire Hall.



Graffham's ringers and tutors on their stop at Bosham.

Bellringers sally off on their first tower outing

First port of call, in the downland village of Stoughton, entailed a walk up through some cold, damp mist as the church sits on a hilltop above the houses, *writes Philippa Sanders*. With its oldest bell, the Number 5, dating from around 1393 and the church itself from the 11th century, the sense of history was pervasive.

Bosham's well-known church of Holy Trinity was next. The ringing chamber was reached via a set of steps at the back of the church but was warm and intimate, with some generally 'friendly' bells. The three teachers that accompanied us, Kevin Quigley, Nigel Boarman and Vicky Chase, dispensed advice to us all, and joined in the more sophisticated ringing methods.

Lunch was next on the agenda, and a stop at the Walnut Tree in Runcton replenished the ringers' energy, ready for the two afternoon towers. At Pagham, where Howard had learned to ring as a youngster, the team found the bells pleasingly straightforward, even the Number 3, which disappeared up inside a wooden tube. The chamber was surrounded by a staircase, allowing for some spectating and mutual technique appraisal.

The final call of the day was at St Mary the Virgin, Aldingbourne, a most unusual church in itself, and with a tiny ringing chamber of only five bells off to the side of the nave. The most experienced ringers managed a 'touch' of Bob Doubles, the method that most of us aspire to. It was a wonderful day and we enjoyed every minute of it. We did love returning to our 'own' bells, though!

- Graffham's bellringers can be found practising every Tuesday evening in St Giles Church from 7.30 to 9pm. They also hold a morning session on the second Saturday of each month from 10am to 12pm. If you think you might be interested, do come along and see what it's all about.

Polo

East Lavington's Beanie Bradley has, at the time of writing, successfully steered the England Ladies' Polo team to victory over South Africa. Hosted at the Plettenburg Bay Polo Club, the series comprised two matches over two days on borrowed ponies. Not only did captain Beanie lead her team to the series win, she was also awarded the Most Valuable Player title and her ride, Catta, the Best Playing Pony. In the process she scored her first ever International 60 penalty, lofting it carefully over heads.

With the rest of the team playing their polo full-time, Beanie is the only one to achieve her success while notching up impressive A Level results at Seaford. For the time being she has turned down a place at Loughborough University but is more motivated than ever to procure more success on the pitches.

She said: "I'd really like to thank the whole village for their support and especially for the patience of the motorists when passing me and my string of polo ponies!"



Beanie (second right) and her England team celebrate their series win away in South Africa.

Graffham Tennis Club

Awards evening The format for this year's awards dinner was a chilli-with-all-the-trimmings night – mirroring the club's successful curry night. The pavilion was full as the winners of the club tournaments (listed in December's edition) received their trophies from chairman Simon Longman, who reflected on another successful year for the club. Vintage tennis documentaries were shown on the big screen in the background, inspiring the village players to keep playing through the winter season.





Tennis Club chairman Simon Longham presents trophies at its awards evening in late November to Sally Pattie (left), who won the seniors' doubles title with partner Lynne Marriner, and Emma Amin, winner of ladies' doubles with Sian Green and mixed doubles with Andy Craig.

League results The tennis winter league season has been plagued with yet more weather cancellations. Fortunately, a full morning of rain did not prevent the afternoon's away fixture at Midhurst going ahead on 1 December. Graffham's team of Vincent Leysen, Dee Baird, Rich Sabin and Angie Thornley came close to pulling off a 4-4 draw but were pleased with a 3-5 defeat to our nearest rivals.

Home fixtures for January, both Mixed Doubles, playing in East Hants League Division 1 on Sundays:

- 5 January 10.30am vs Haslemere A team.
- 12 January 1pm vs Steep A.

Badminton

Graffham's Badminton Club used the occasion of their Christmas party in the Empire Hall to hold a round robin tournament to identify the top player of 2024. With some potential contenders away performing at rival activities such as Christmas concerts, there was one clear favourite to take the trophy and so each rotation of the competition saw players attempt to claim superiority over... Jeeva. It was not to happen, though, and he ended up as a clear winner. A bring and share

▶ *Continued on next page*

► *Continued from previous page*

dinner followed, where outgoing organiser Louisa Thomas was thanked for her great contribution and incoming chief Christina Federowicz congratulated.



During the meal great claims were made for the sport, including one person thanking it for a significant lowering of cholesterol!

As the tables were cleared away the party decided to reinstate the badminton court, whereupon play of a more questionable standard ensued!



T: 01483 208408
E: office@ghinn.net
www.ghinn.net



For over 50 years Ghinn & Co. have been helping home owners improve and extend their properties throughout Surrey and West Sussex.

Call now for a FREE, professional quotation from the experts.



Midhurst Tailor Touch
MT
sewing - alteration room

midhursttailor@gmail.com
01730 642156
Hollist House, West Street,
Midhurst GU29 9NF

Styling/Restyling
Ladies & Gents Tailoring/Alterations
Bridal/Bridesmaid Dresses
Prom and Special Event Gowns
Coat/Jacket Relining
Leather/Fur Repairs

MESSY CHURCH

COME AND JOIN US FOR
GAMES, CRAFT, A BIBLE
STORY AND FOOD

THURSDAY 16TH JANUARY 2025
@ THE PAVILLION, GRAFFHAM REC

ALL AGES WELCOME

DOORS OPEN 3.30PM
CRAFT STARTS 4.30 PM
FOOD 5.30PM

RSVP HEN ON 07714652856

Messy Church is free but donations
are welcome to cover expenses



St Giles Church, Graffham



Crafty: Fun was had creating 'stained glass windows' and decorated jars.

Messy Church comes to Graffham's Pavilion

Messy Church has arrived in Graffham, with its first session held in November, the next to be staged on 16 January and dates for three more already in the diary – all in the Rec Pavilion on Thursday afternoons, after school.

Messy Church provides children, parents and grandparents with an opportunity to learn together about Bible stories and Christian values in a fun way. Rev Vivien



said: "Village families meet each other. Children of different ages play together. Everyone gathers for a short talk, prayer, and song. We all enjoy a delicious meal prepared by St Giles Church volunteers – thanks to them! – providing a welcome break for parents and a great social time." The





Time to tuck into some yummy food, washed down with some refreshing squash...

first session was attended by 32 people of all ages. With the theme of “Jesus, Light of the World”, they took home stained-glass windows made of card and tissue paper and decorated candle holder jars saying “Let your light shine!”, under the guidance of Annie Cauchi and Holly Sabin.

If you are a family and you’d like to join in, or if you came to and enjoyed the first session, you are welcome to come along.

Just let Henrietta Aparicio know via hello@stgilesgraffham.org – so she and her fellow organisers know how many people to expect.

The next Messy Church sessions will be held at the Rec Pavilion on Thursdays 16 January, 6 March, 1 May and 12 June. They start from 3.30pm and finish at 6.30 pm but you can arrive and leave when you want.



...and have fun playing games, on the theme of 'light' at the first session

**New or upgraded
system? Call us
today to arrange
a FREE survey**



- ★ Intruder Alarms
- ★ CCTV
- ★ Entry Phone Systems
- ★ Fire Alarms

t. 03300 945596
w. www.scorpio-alarms.co.uk
a. Pippin Farm, Toat Lane, Pulborough RH20 1BZ



theflooringbrothers.co.uk

**LET US PUT THE COMFORT
BACK UNDER YOUR FEET!**

Locally based carpet and vinyl
fitters and suppliers

Small family business with no
large overheads so we offer
sensible prices, combined with
a friendly personal service
from start to finish

Jon: 07595 873598

Lucas: 07532 453873

info@theflooringbrothers.co.uk



W. Bryder & Sons

est. 1863

The Gables
Tillington
GU28 9AB

Tel: 01798 342174

95 Lower Street
Pulborough
RH20 2BP

Tel: 01798 872000

Email: wbryderandsons@hotmail.co.uk

**5TH GENERATION LOCAL FAMILY RUN
INDEPENDENT FUNERAL DIRECTORS**

24 Hours Service
Private Chapel of Rest
Monumental Stones supplied
Pre-Paid Funeral Plans available
Grave Maintenance service

Baby Bertie Aparicio baptised

Albert Manuel Carey Aparicio – better known as just Bertie – was baptised at St Giles Church on Sunday 15 December. Mum and Dad Henrietta and Manny, and sisters Edith and Stella, all of Pescods, The Street, Graffham, were joined by his Godmother Emma Vernon and family and friends as Rev Vivien led the service.

He was to have worn the gown his maternal grandfather had worn for his own christening, in nearby Stopham, during World War II – but Bertie was too big for it! His grandfather was just three months old when he had been christened, and staying as a refugee with family friends at Stopham House, between Fittleworth and Pulborough, after being evacuated from his Guernsey home before the Nazis invaded the island.

A few months after his baptism, the vicar who christened him was killed in a rogue air raid while shepherding village schoolchildren to safety.



Bertie with his Dad Manny.

PACT to visit for talk at All Saints – then soup

Petworth Area Churches Together (PACT) stages its Christian Unity week from Sunday 19 January – with one of its events taking place here in Graffham. Everyone is welcome at all events with no bookings needed.

On the Monday (20 January), our parish will be hosting visitors from churches of all denominations from across the area at a talk in All Saints Chapel at 12.30pm followed by a soup lunch in the Pavilion.

The activities begin on Sunday 19 January at 3pm with PACT's annual Christian Unity Service, at St Peter's Vincula Church, Wisborough Green.

The final two events in the calendar, lunchtime talks, take place on Tuesday 21 January at Petworth's Sacred Heart Roman Catholic Church and the following day at Fittleworth's St Mary's Church. Both start at 12.30pm.




TEDDY TIME in the Pavilion TODDLER GROUP

Wednesdays 10.15-11.30am
Pavilion, Graffham Rec

No charge. All welcome. Just come along!

What's being read at St Giles in January

Here's the rota for this month's 10.30am services. If you cannot do your slot, please arrange a swap and advise Diane Bellis at diane.bellis@gmail.com and Rev Vivien at reverendvivien@gmail.com

Reading		Cleaning
5	Isaiah 60 v1-6	 Annual Church Clean on Saturday 4 January 9.30am - please help!
12	Isaiah 43 v1-7	
19	Isaiah 62 v1-5	
26	Nehemiah 8 v1-3,5-6,8-10 or 1 Corinthians 12.12-31a	

Other denominations locally

Methodist: Midhurst. *Minister:* David Muskett *Tel:* 01730 233436. *email:* superintendent@esanddcircuit.org.uk. *Web:* midhurstmethodist.com *Worship:* Sundays 10.00am, and Café Church 1st and 3rd Wednesdays 10.30am.

Roman Catholic: The Catholic Churches of Saints Anthony and George, Duncton, The Divine Motherhood and St Francis of Assisi, Midhurst, and The Sacred Heart, Petworth. *email:* petworth.abdiocese.org.uk. *Tel:* 01798 342169. *Web:* www.petworthcatholic.org

Mass					
Sun	8am	Duncton	Thu	9.30am	Petworth
	9.30am	Midhurst		12noon	Midhurst Convent
	11am	Petworth	Fri	6.30pm	Petworth
Tue	10.30am	Petworth	Sat	9.30am	Midhurst
Wed	9.30am	Midhurst		5.30pm	Petworth

Society of Friends (Quakers): St Anne's Community Centre, St Anne's Hill, Midhurst, GU29 9NN. *Web:* sussexwestquakers.org.uk *Meetings:* 2nd and 4th Sundays 10.30am.



TAIZÉ PRAYER

song, prayer and silence

Sunday 26 January 6.30pm

All Saints Chapel, Graffham (opposite shop)

All welcome to this short ecumenical service based around
a pattern of worship from the Taizé Community

What's on at our village church and chapel

- All residents and visitors are welcome to all services.
- St Giles Church is at the far south end of Graffham Street, near the Downs.
- All Saints' Chapel is opposite Graffham Village Shop.
- Both St Giles Church and All Saints' Chapel are open daily.
- See stgilesgraffham.org or Facebook's @stgilesgraffham for any changes.

January				
4	Sat	9.30am	Come and Sing!	St Giles Church
5	Sun	10.30am	Parish Eucharist of Epiphany	St Giles Church
7	Tue	9.30am	Morning Prayer then Pilgrims at 10am	All Saints Chapel
8	Wed	6.30pm	PCC Vision meeting	The Rectory
11	Sat	10am-12noon	Bellringing Practice	St Giles Church
12	Sun	10.30am	Parish Eucharist Baptism of Christ	St Giles Church
			No Evensong in January	
14	Tue	9.30am	Morning Prayer then Pilgrims at 10am	All Saints Chapel
15	Wed	12.30pm	Food with Friends	The Rectory
16	Thu	3.30-6.30pm	Messy Church	Rec Pavilion
19	Sun	9am	BCP Holy Communion	St Giles Church
		10.30am	Third Sunday Service Epiphany 2	St Giles Church
		3pm	Christian Unity Service	Wisboro' Green Church
20	Mon	12.30pm	Christian Unity Prayers with soup lunch hosted by our parish	Graffham Pavilion
21	Tue	9.30am	Morning Prayer then Pilgrims at 10am	All Saints Chapel
		12.30pm	Christian Unity Prayers with soup lunch hosted by Petworth Roman Catholic Church	Petworth Sacred Heart Church
22	Wed	12.30pm	Christian Unity Prayers with soup lunch hosted by Fittleworth parish	Fittleworth Church
		6.30pm	PCC Meeting	The Rectory
26	Sun	10.30am	Parish Eucharist Epiphany 3	St Giles Church
		6.30pm	Taize Prayer Service	All Saints Chapel
28	Tue		No Morning Prayer or Pilgrims	
30	Thu	10.30am	PCC Community Group meeting	
February				
1	Sat	9.30am	Come and Sing	St Giles Church
2	Sun	10.30am	Parish Eucharist for Candlemas	St Giles Church

What's on in and around the village

For all St Giles and All Saints events, see page 47. For all sports dates, see page 38-39.

December				
29	Sun	4-6pm	Burn's Night dancing practice (page 34)	Empire Hall
31	Tue		New Year's Eve	
January				
1	Wed		New Year's Day bank holiday	
4	Sat	9am-2pm	Midhurst Farmers Market	Midhurst
5	Sun	9.30am	Graffham Down Trust work party (page 32)	Meet at St Giles
		4-6pm	Burn's Night dancing practice (page 34)	Empire Hall
6	Mon		Epiphany	
			Petworth House closes for upgrades (see p 11)	Petworth House
		WSCC schools and Seaford College terms start – but Graffham Infant and Duncton Junior Schools have INSET days on Monday 6 Jan and Midhurst Rother College has INSET days on 6 and 7 Jan.		
8	Wed	7pm	Graffham Parish Council meeting	Empire Hall
9	Thu	2.30pm	Thursday Club talk on Slow Grown Farm	Empire Hall
10	Fri		Deadline for responses in Lavington Stud and Estate consultation (see page 12)	
11	Sat	7pm	Ed Blunt, Daisy Chute and Holly Rogers in concert (see page 24)	Empire Hall
12	Sun	4-6pm	Burn's Night dancing practice (page 34)	Empire Hall
		7pm	Folk music night	Three Moles
15	Wed		Deadline for applications to enrol in September at Graffham Infant School	
16	Thu	3.30pm	Messy Church	Pavilion
18	Sat	7pm	Burns' Night celebration (see page 34)	Empire Hall
19	Sun	12.30pm	Petworth Area Churches Together talk followed by soup lunch in Pavilion	All Saints Chapel
20	Mon	6.15pm	East Lavington Parish Council meeting	Seaford College
25	Sat	9am-1pm	Petworth Farmers Market	Petworth
			Petworth House reopens after upgrades (see page 11)	Petworth House
		10-11am	Community garden work party	War Memorial
		7pm	Graffham Empire Movies presents Wicked Little Letters (see page 10)	Empire Hall
29	Wed	12.30pm	Lunch Club ²	Empire Hall
30	Thu	12.30pm	Graffham Garden Group new year lunch (see page 14)	Empire Hall

¹**Great Feet foot health professional:** Available to Graffham Health Support Association members only.

²**Graffham Lunch Club** meets on the fourth Wednesday of the month at 12.30pm for 12.45pm for a home cooked two-course meal and coffee, at £9 a head. Please book via Sarah on 01798 867567.

Regular weekly activities (for notes, how to book, etc, see below)

Mondays	9-10am	Fitflows Fitness ¹	Empire Hall
	Daytime-evening	Osteopath ²	Empire Hall
Tuesdays	8.30am-12noon	Post Office	Empire Hall
	8am	Strength and mobility with Gemma ³	Westerlands
	9.30am	Circuits with Gemma ³	Westerlands
	Daytime-evening	Osteopath ²	Empire Hall
	7.30pm	Bell ringing practice - newcomers welcome	St Giles
Wednesdays	9-10am	Yoga ⁴	Empire Hall
	10.15-11.30am	Teddy Time toddler group ⁵	Pavilion
	11.15am-12noon	Pilates ⁶	Empire Hall
	1.45-2.45pm	Rusty Racquets adults tennis coaching ⁷	Rec
	6pm	Boxercise with Nina ³	Westerlands
	7-8.30pm	Badminton ⁸ - all welcome	Empire Hall
	Daytime-evening	Osteopath ²	Empire Hall
Thursdays	Daytime-evening	Osteopath ²	Empire Hall
	10.45-11.45am	Ease Into Exercise ⁹	Empire Hall
	5.30pm	Bootcamp with Gareth ³	Westerlands
	6-7.15pm	Yoga ⁴	Empire Hall
Fridays	9-10.15am	Yoga ⁴	Empire Hall
	9am-3pm	Physiotherapy clinic ¹⁰	Empire Hall
Saturdays	8am	Hard core exercise with Nina ³	Westerlands
	10am	In motion with Gareth ³	Westerlands
Sundays	5pm	Pickleball ¹¹	Empire Hall
	5pm	Casual football ¹²	Rec

Empire Hall: For booking and contact details, see Directory, inside back cover.

¹**Fitflows Fitness:** Contact Susie Bush 07870 219956.

²**Osteopath:** Bookings required. To make an appointment, for daytime or early evening, contact Anna Shawcross on 01798 867523 or see www.annashawcross.co.uk

³**For all Westerlands events:** Book online at www.westerlands.com/experiences/wild-fit

⁴**Yoga:** Deborah Albon on 07790 367009.

⁵**Teddy Time:** No charge. All welcome. Just come along.

⁶**Pilates:** Contact Nicky Capes on 07990 517858 or 01730 812297.

⁷**Rusty Racquets:** Contact Richard Hopp at richard@hoppcoaching.co.uk, on 07904 069457.

⁸**Badminton:** Contact Louisa Thomas, at louisa9000@hotmail.co.uk. All welcome.

⁹**Ease Into Exercise:** Contact Susie Bush 07870 219956.

¹⁰**Physiotherapy:** Contact Serena Cooper on 07884 445983 or at serenacooper.physiotherapy@outlook.com.

¹¹**Pickleball:** Contact Beanie Bradley on 07500 080417.

¹²**Casual Football:** Contact Lucas Thornley on 07767 721997.

Please support us Graffham Parish News is delivered to every home in Graffham and East Lavington each month – for free. If you like reading the magazine, then please contribute towards its costs through a monthly online donation to its publisher, our village parish – and help safeguard the future of the village’s beautiful and historic St Giles Church. It only takes a minute, at bit.ly/GPN-donation



**CHRIS NEVILLE
PLUMBER**

- ✚ All types of plumbing work carried out.
 - ✚ Fast, reliable, friendly.
 - ✚ Fully qualified and insured.
- 07772 040005**

Paula's Cleaning Services

Call for Quotation! 07563 722849

House Cleaning, Office Cleaning,
Deep Cleans and everything in between!

**ClearSkies
Travel Insurance**

- No upper age limit
- Medical condition specialists
- Waiting list cover
- Cruise cover option
- Single trip, multi trip, backpacker

01428 772 722

clearskiestravelinsurance.com/intro/graffham

FORESTERS GETAWAY
Cosy Country Cottages

**B&B ♥ Holiday rental
Graffham village
5* Livery
07768 697427**

- Puppy Training
- Dog Agility
- Pet Gun Dog Classes
- 1-2-1 Sessions

Dogs Doing Better
Kilsham Farm, Petworth GU28 0LJ
www.dogsdoingbetter.com
Call Liz 07702 009272
Or email:
dogsdoingbetter@gmail.com

- ✚ Fully insured
- ✚ Dustless sanding
- ✚ Free quotes
- ✚ Interior and exterior

07912 680750

ROGER GUNN
GARDEN MACHINERY
SHOWROOM AND WORKSHOP



Fast Friendly Service
Competitive Prices
Collection & Delivery
Available



www.rogergunn.co.uk

Telephone 01243 786003

or 07979 752242

located between Lavant and West Dean

**Southern Counties
Tree Services**

Skilled Surgery in all aspects of Tree Care

- *Hedge trimming
- *Landscaping
- *Tree reduction
- *Logs supplied

Tel: 01243 814854

Mob: 07774 012961

barneslogs@gmail.com

CLEAR ALL
PEST CONTROL

Fully qualified professional country
services

Specializing in Hornets, Wasps, Moles,
Rats, Mice & Flies/Cluster Flies
www.clearallpestcontrol.com

Phone Dean on:

07768 986 338



Southdowns Chiropractic

Jemma Langford DC Patrick Thomas DC

Treating all musculoskeletal conditions
related to the spine, along with hips, knees,
shoulders and many soft tissue injuries.

We also offer a range of other treatments:
Foot Health, Toe Nails Cut, Massage, Reiki,
Ear Wax Removal, Hearing Test,
Acupuncture, Reflexology
01798 345145

The Old Bakery Golden Square Petworth GU28 0AP
Registered with BUPA & all major Health Insurers



Dismantling and felling
Crown thinning and reducing
Removal of deadwood Pruning
Hedge cutting Stump grinding

Full public liability

Certified arborist

Free estimates and advice



brushwoodtreeservices@gmail.com

07763 844422

NATALIE LOUISE

INTERIOR DESIGN



*PERSONALISED SERVICES
TO CREATE A HOME YOU LOVE*

07590 190016

NATALIELOUISEINTERIORS@GMAIL.COM

WWW.NATALIELOUISEINTERIORS.COM



**Straight Line
Fencing**

With 30+ years' experience, we are the leading fencing and groundwork specialists in West Sussex and Surrey.

Quality workmanship assured, whether you need to keep children or horses in, wildlife out or just want security for your home.

01428 685222

s1f@straightlinefencing.co.uk

Norwood Contractors GARDEN MAINTENANCE

Grass and Hedge cutting,
Pruning, weeding,
Planting etc.....

ENQUIRIES:


01798 867 338

Or 07973 370 727



Anna Shawcross
— OSTEOPATHY —

Call Anna 01798 368078

hello@annashawcross.co.uk | 

Caytons Limited

Stuart A Hail
Specialist Oil Fired
Heating Engineer

**Boilers
Agas**

**Servicers
Breakdown
Installation**

Tel 01798 344 213

M 07779 11 33 43


Email: caytonsltd@gmail.com

MOLE CATCHING
"NO MOLE, NO FEE"
WASPS / HORNETS
CONTACT ANGUS ON 07828 134086
WWW.ASCOUNTRYSIDESERVICES.CO.UK

HOOLI.

Design | Marketing | Words | Web


01730 816484

 @hoolidesign

hooli.co.uk | hello@hooli.co.uk

Get in touch with Julia and Rachel

Nº1 West Street, Midhurst

 front.hopefully.desktops

Martin Taylor

*Quality Carpenter, Joiner and
Cabinet Maker*

*Fully fitted and freestanding furniture
a speciality. Cupboards, Wardrobes,
Radiator Covers, Fitted Kitchens.
Design service available.*

Mobile 07704-524252

*Email:- martin@martintaylor design.co.uk
www.martintaylor design.co.uk*

Water Pipe Repair Services

Allan Marsh

07470 440836

Water pipe repairs
Water pipe renewals
Plumbing repairs
Water leak detection
Lead pipe replacement
Drain repairs
Outside taps fitted
Sinks, baths and toilets
Driveway and footpath repairs



ATHENA
BOOKKEEPING SERVICES

BOOKKEEPING SERVICES

for small business and sole traders

VAT RETURNS CIS RETURNS

SELF-ASSESSMENT

GENERAL BOOKKEEPING

Jennifer Sear MICB

Heyshott, Midhurst

T: 07834 765761

E: athenabookkeeping@aol.com



need help with your pc? Clive Way BA ^{hons} Computing

The friendly professional service for your home pc, laptop and other device nightmares.

I am now based in Wales.
But fear not –
I can still help you with
many problems by
remotely accessing your pc,
mac, phone, ipad or other
electronica.



tel: 0791 7766254

email: cliveway@yahoo.com

HELEN'S AIRPORT CARS

"With US it can often cost less than rail or airport parking"



Saloons
MPVs
Estates
4 - 8 seaters

Reliable
Affordable &
Comfortable
Pre-booked
24hr

01243 820820

Book Online Now www.airporttaxi.co.uk

24 Sudley Road, Bognor Regis. PO21 1ER




PESCADORAS
PRIVATE HIRE

Graffham Based Taxi Service

PRE-BOOKED LONG DISTANCE JOURNEYS



• PLEASE CALL, TEXT OR EMAIL FOR A QUOTE.
• 24 HOUR SERVICE AVAILABLE BY PRIOR ARRANGEMENT.

 **07467 521 760**

pescadorashire.co.uk
pescadorasprivatehire@gmail.com


PRISM
WINDOW CLEANING

Prompt and Friendly
Telephone Fran or Dean on
07768 986 338
Based in Lickfold
Est. 1990
prismwindowcleaningltd.com


R
P

Roger Poat & Partners
Funeral Directors &
Monumental Masonry
Consultants

Duck Lane, Midhurst, West Sussex GU29 9DE
Telephone 01730 812094
(24 Hours)
• Pre-need Funeral Plans
• Private Chapel
Email: info@rogerpoat.co.uk
Michael Miller & Partners Ltd

CARPET & RUG DRY CLEANING
UPHOLSTERY & CURTAIN CLEANING
STAIN PROTECTION

TEL: 01730 814 965
www.magnadrysouthern.co.uk


MAGNA DRY SOUTHERN

Free Estimates ~ Fully Insured


engarc architecture Ltd



Architect
-
Structural Engineer
-
Builder

All buildings including
historic and listed

We would be delighted
to help you achieve your
dream design

t: 01428 741671 mail@engarc.co.uk
m: 07734 703777 www.engarc.co.uk

West Sussex Logs

Logs cut to size.
All seasoned timber.
Two days for delivery
once ordered.

*Grass cutting, hedge cutting
and tree work also available.*

Timberscapes

Born out of a family of gardeners and skilled craftsman

- ⊙ All hard landscaping, garden clearance
- ⊙ Site/garden clearance
- ⊙ Ground works & site levelling
- ⊙ Garden walls & raised planting beds
- ⊙ Paving, decking, wooden structures
- ⊙ Fencing and edging

07913 118780

greg@timberscapes.co.uk

Quiz answers (from page 27)

1 Helen Martin as Headteacher of Lavington Park Federation schools. 2 [b] Oving. 3 Jennings. 4 42. 5 [a] Charlene. 6 2025. 7 Ermintrude. 8 1845. 9 *Diamonds Are Forever*. 10 Pilot.



A Touch Of Class

Beauty and Massage

Based in Graffham

- Environ Facials
- Waxing
- Pedicures
- Eyebrow/Eyelash Tinting
- Reflexology
- Swedish, Sports, Deep Tissue, Aroma-Relax, Cranial Massage

Authorised and trusted reseller of Environ skincare products

Contact Janine
07908 737783

Gift Vouchers Available



Maths tutoring

11+, 13+, Scholarship, GCSE, A Level, IB, Pre-U
www.escry.com
simon.mitchell@escry.com 07850 125 519

Matt Wheatley Local electrician

Part P approved contractor
Fully insured

For prompt and friendly
service, please call

07976 465974

or email

mattwheatley1971@btinternet.com



Friday Physiotherapy Clinic Graffham

Low back pain/sciatica
Neck pain
Joint pain
Muscular aches and strains
Sporting/ligament injuries
Chronic pain
Home visits available

For more information please get in touch on:
0788-4445983
serenacooper.physiotherapy@outlook.com

Directory: Useful local contact info

DOCTORS	<p>Petworth Surgery 01798 342248</p> <p>Midhurst Riverbank Medical Centre 01730 812121</p> <p>Haslemere Minor Injuries Unit 01483 782334</p>
DEFIBRILLATORS	<p>On wall outside Empire Hall Code is C240Z</p> <p>In phone box outside Pescods Code is C159X</p>
FLOOD ALERT for Lods Bridge	To check river level bit.ly/lodsbridge
POLICE	<p>In emergency 999</p> <p>Non-emergency 101@sussex.pnn.police.uk 101</p> <p>Southern Water 0800 820 999</p>
BURST WATER MAINS	Scottish & Southern Electric 105 or 0800 0727 282
POWER CUTS	Linking Graffham with Chichester, Petworth etc bit.ly/99flexbus
99 FLEX BUS	01243 858854
All Saints Chapel Trust	Chairman Clive Rowntree 01798 867536
Badminton	Christina Federowicz 07900 055574
Bees / Swarms	<p>Wisboro' Green B'keepers Tom Moore 07984 606214/01798 343470</p> <p>Local beekeeper Murray West evenings 01798 867048</p>
Chichester District Council	01243 534734
District Councillor	John Cross jcross@chichester.gov.uk
	07592 307027
Dog Warden	Office hours 01243 534734
	Emergency 01243 785339
Citizens Advice Bureau	03448 487969
East Lavington Parish Council	<p>Chairman Charles Britton charles.britton@eastlavington-pc.uk</p> <p>Clerk Amy Harte 07889 979820</p> <p>eastlavingtonpc@gmail.com</p>
Empire Hall	<p>empirehall.org.uk empirehall@gmail.com</p> <p>Chairman and Bookings Sally Blunt bookings.empirehall@gmail.com</p> <p>Treasurer Carole Sargent 01798 344790</p> <p>Maintenance Gillian Charlesworth empirehall@gmail.com</p>
Foodbank	info@chichester.foodbank.org.uk 01243 773687
Foresters Arms	forestersarms-pub.co.uk 01798 867386
Graffham Archive	Robin Brind graffhamarchive@outlook.com 01798 867619
Graffham Bellringers	Tower Captain Howard Pescott 01798 867029
Graffham Bowls Club	<p>Chairman Sheila Allen 01798 342869</p> <p>Secretary Liz Pegram 01798 867770</p>
Graffham Cricket Club	Bill Barrett 01798 867113
Graffham Down Trust	Chairman Jim Kirke 01798 867026
Graffham Garden Group	Carole Kirke 01798 867026
Graff'm Health Support Assc	<p>Chairman Sarah Lydiard-Wilson 01798 867567</p> <p>Membership Tracy Rowe 07881 698993</p> <p>Transport 07391 802541</p> <p>Prescription collection Ann Rowney ann.rowney@icloud.com</p> <p>Loan of equipment Karin Skanberg 07920 091014</p>

Graffham Lunch Club		Sarah Lydiard-Wilson	01798 867567
Graffham Nursery		School Office	01798 867324
Graffham Parish Council	Chairman	Roger Coakes	roger.coakes@grafttham-pc.uk
	Clerk	Caroline Davison	clerk@grafttham-pc.uk
Graffham Parish News	Editorial and circulation:		editor.graftthamparishnews@gmail.com
	Advertising:		ads.graftthamparishnews@gmail.com
	See also bottom of inside front cover		
Graffham with Woolavington Parochial Church Council			stgilesgrafttham.org
	Priest-in-Charge	Rev Vivien Turner	01798 867199
			hallo@stgilesgrafttham.org
	Churchwardens	Ginny Barrett	01798 867113
		Cindy Bradley	07787 516522
	Acting Treasurer	Ginny Barrett	graftthampctreasurer@gmail.com
Graffham Rec Committee	Chairman	John Bracey	01798 867760
	Treasurer	Bernard Bayly	01798 867042
	Bookings Sec	Sonya Gillespie	graftthamrecpavilion@gmail.com
Graffham Tennis Club	Chairman	Simon Longman	01798 867317
	Membership	Richard Gyles	01798 867484
	Coaching	Emma Amin	01798 867063
Graffham Village Shop		Jeeva and Vasu	01798 867700
			graftthamvillageshop.co.uk
Graffham Village Shop Assoc	Chairman	Steve Dover	07770 499223
	Treasurer	Andy Jones	andy.jones@grafttham.net
	Secretary	Ros Britton	rosalind.britton@btinternet.com
Katherine Maud Guillod Fund	c/o Graffham PC Clerk		graftthampc@gmx.co.uk
Lavington Estate	info@lavingtonstud.co.uk		01798 867275
Lavington Park Federation	graftthamanddunton.w-sussex.sch.uk		
	Graffham CE Infant School		01798 867324
	Dunton CE Junior School		01798 342402
	Friends of Graffham & Dunton Schools		01798 867324
Long Bostle Downland Soc		Gillian Brandt	01798 867276
MP Arundel & South Downs		Andrew Griffith	andrew.griffith.mp@parliament.uk
Midhurst & Petworth Observer		Nikki Jeffery	01243 534163
National Trust (Lavington Common)	01730 816638		
Neighbourhood Watch		Michael Crickmay	01798 867486
Osteopath		Anna Shawcross	01798 867523
Oil Buying Syndicate		Derek Bradnum	derekbradnum@gmail.com
Petworth Food Bank	07501 921617		
Pilates at Empire Hall		Nicky Capes	07990 517858
Potholes	To report a pothole or other road problem online		bit.ly/report-potholes-west-sussex
Seaford College	01798 867392		
Three Moles		Ollie and Tom	thethreemoles.com 01798 861303
Thursday Club	Secretary	Diane Bellis	01798 867444
West Sussex County Council	General enquiries		01243 777100
	County Councillor	Tom Richardson	07463 785039
The Woodcote (formerly White Horse)	thewoodcote.com		01798 867331
Yoga at Empire Hall	Deborah Albon		07790 367009



JACKSON-STOPS

PROPERTY EXPERTS SINCE 1910



“Seems like it was only five minutes ago this place felt as spacious as a palace.”

Downsizing, Upsizing, Extending?

If you are considering the sale of your property or need good advice, we would love to hear from you.

**Please get in touch with our team in
Midhurst to find out more**

01730 812357 midhurst@jackson-stops.co.uk
Market Square, Midhurst, West Sussex, GU29 9NJ