

GRAFFHAM PARISH NEWS

ISSUE 414

FREE

AUGUST 2025

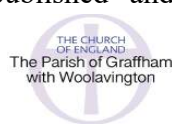


Two weddings in a day at St Giles

Save the date for the great Graffham fête
Church to get fresh coat of paint in its big year
£16,000 grant means play park can be completed
East Lavington proposes Graffham merger meeting



Graffham Parish News is published and distributed free each month to every household in Graffham and East Lavington by the Parish of Graffham with Woolavington.



September 2025 edition deadline 12 August.

Archives and online This edition and back copies can be viewed online at bit.ly/GPNOnline

Find us on Facebook We're on social media too! [@graffham.parish.news](https://www.facebook.com/graffham.parish.news)



Subscriptions If you live outside the parish, you can receive copies by mail. Annual subscriptions are £40. Contact the editors for full details.

Advertising We love our advertisers! If you are interested in being one of them, please contact Philippa Sanders (below) or email ads.graffhamparishnews@gmail.com

Please support us If you enjoy reading this magazine, then please make a contribution through a monthly or one-off online donation – just point your camera phone at this QR code or go to bit.ly/GPN-donation



On the cover: St Giles was the venue for two weddings on one day on the final Saturday of June. Meantime a village couple celebrate their golden wedding this summer. We also report in this edition, with regrets, the passing of two women who made their mark on Graffham.

Contributions and contacts The editors are always pleased to hear from you at editor.graffhamparishnews@gmail.com

- Michael Blunt (left) 07711 997487
- Bill Barrett (right) 07443 501091
- Philippa Sanders 07853 921825



Copyright All content is © *Graffham Parish News* unless otherwise stated and may not be reproduced without the editor's written consent.

Printed by TCW Solutions, 10 Nepicar Park, London Road, Wrotham, Kent TN15 7AF.



Member editor 2025 Award Winner 2022
Association for Church Editors

Association for Church Editors

Writing from the Rectory: Hope and Tranquillity

When out walking on holiday in Dorset when our children were young, we would pass two semi-detached houses, one named Hope and the other Tranquillity. I thought the very name of these houses would make you feel better for living there. I've always remembered them. Do you live in hope? Or do you live in tranquillity? Both would be positive blessings in anyone's home life. Imagine if they had been called Despair and Commotion. I feel quite disturbed just thinking about it. You'd never sell them. No-one wants to live in despair.

Does the name of your house affect your living there? It's an interesting question. Does living in The Cottage make a person feel cosier or The Manor make someone grander? The Rectory certainly conveys its own character. The Rectory here is a house to stimulate responsibility and awareness of the privilege of service. It is a building intended to enable me to fulfil my duty, as in 'House for Duty', serving God through serving the people of this parish in the time allotted me. It's a house to challenge me to do my best – a home and place of work to live up to as well as to live in.

Church is the name of another building with distinctive connotations for people. Most places have somewhere called Church in them. If you walk past Church, how do you think of it? We would love it if the word Church made everyone feel better for hearing and seeing it,

► *Continued on next page*



'We hope our St Giles Church makes everyone feel better for seeing it and blessed every time they walk past it.'



Priest in charge: Reverend Vivien Turner
hello@stgilesgraffham.org 01798 867199

Churchwardens: Ginny Barrett 01798 867113
Cindy Bradley 07787 516522

Safeguarding Officer: Howard Pescott
01798 867029 safeguardinggraffham@gmail.com



stgilesgraffham.org



@stgilesgraffham

► *Continued from previous page*

be a name which represents blessing and inspiration for them. We do all we can to make it so. We hope our infant school children experience a blessing each time they come into Church for assembly saying: “This is a special place for God to be in our thoughts and in our hearts and all around us today.” And that it gives them a positive impression of Church that will last.

We hope every visitor to Graffham and every resident here this summer will be blessed by Church every time they walk past or turn into our churchyard, up our path and in through the Church door. And that they will remember St Giles as a welcoming and well cared for spiritual dwelling place.

We hope Church will convey the best meaning to a person that a word can give and provide as much hope and tranquillity as those two houses in Dorset, and as much positive challenge as a parish priest living in The Rectory. We hope the word Church represents all this blessing to you.

Enjoy your summer and seek out churches to feel better and be blessed in on your travels, wherever you go.

With love,



Reverend Vivien

LATE NEWS

East Lavington proposes Graffham merger meeting

East Lavington Parish Council and Graffham Parish Council are proposing to hold a joint parish meeting this autumn for their residents to give their views on whether or not the two parish councils should merge.

Graffham Parish Council is in favour of combining with its East Lavington neighbour after its own annual meeting of its parish, in May, showed a clear majority of those attending in favour. Its Chairman Gillian Charlesworth has formally written to East Lavington to confirm that position. East Lavington’s parish councillors are split on the proposal but have agreed to consult its residents on the idea after its own annual parish meeting clearly showed support for consultation. At its meeting on Monday 21 July East Lavington councillors further agreed to the joint parish meeting with Graffham to consult residents of both parishes. A date in late October or early November will be announced in due course. Watch for details in our next edition.

Appeal launched to pay for St Giles' lick of paint

An appeal has been launched to raise the estimated £15,000 needed to repair St Giles Church's interior plasterwork and then give it four fresh coats of limewash. The aim is to complete the work ahead of November's 150th anniversary of its rededication after its renovation in memory of village squire Bishop Samuel Wilberforce, son of the legendary anti-slavery campaigner. Renovating the building's interior has been delayed until works have been completed to repair its roof. Steeplejacks completed their maintenance of its tiles, leadwork and gulleys last month. They started the project last autumn and returned this summer to rectify the inevitable small leaks identified after the first phase of their renovations. The roof works cost around £35,000. Much of that total was covered by grants – from the Benefact Trust and Sussex Historic Churches Trust. The rest was met from funds built up in recent years plus donations from villagers. A similar approach is being taken to cover the cost of the up-coming interior refresh of the inside of the church's chancel and western wall of the nave. Various trusts are being approached for grants and St Giles' congregation and the wider village invited to contribute. All necessary approvals for the work have already been given, and a specialist contractor signed up. It will require scaffolding being put up inside the church while it is carried out.



**St Giles' west walls
are the areas most in
need of some TLC.**

Stuart Lewis, Chairman of St Giles' Fabric Group, said: "St Giles has been at the centre of our village for around a thousand years – for those who worship there regularly, visit just for Christmas, Easter, weddings and funerals or for those who simply enjoy hearing its bells ring out. Completing, and paying for, its roof works was a major feat for a relatively small parish. Huge thanks to everyone who contributed.

"We appreciate it is a big ask to seek help for the renovations to the church's interior so soon after the roof works, but this is also in urgent need of some attention and will make a big difference to how the church looks. It would be wonderful to complete this ahead of special celebrations marking the 150th anniversary of rededication of St Giles in November when we'll welcome many villagers and visitors including the Bishop of Chichester."

- To see how you can donate towards the refurbishment, go to stgilesgraffham.org/giving/

Play park to be completed after £16,000 grant

The final bits of kit are scheduled to be fitted to Graffham's new play park next month after Chichester District Council made a grant of almost £16,000 to the scheme – taking its fund-raising to its final target.

Phase 1 of the play park was opened just in time for the Christmas holidays by our MP Andrew Griffith, after an initial £65,000 was raised in cash and kind. Graffham Parish Council set the ball rolling with £20,000 from its Community Investment Levy fund. Villagers and friends collectively pledged £15,000, topped up by £3,000 of Gift Aid, with further contributions from Graffham Tennis Club and Graffham Festival 2024. Ensuring the project came to life was a 'donation in kind' from Selham House's Glen and Asta Manchester – with members of their building



MP Andrew Griffith (left) joined Rachel Gerrett and John Bracey to open the play park in December.

team carrying out all the ground works and supplying the woodchip, new fencing and gates. Just ahead of the re-opening, the Lottery Fund kicked off phase 2 of fund-raising with a £16,000 gift.

The final items of equipment – a 'spinning cup' and playhouse for toddlers, a seesaw and a big multi-play 'scrambler' – will now be added to the swings, zipwire, tunnel, slide, roundabout and climbing frame installed late last year. Like that kit, the latest additions will be built in natural materials and fitted by Playsafe, from nearby Elsted. They should take just a week to install, in September, once schools are back from holiday. The play park will be closed while the work is carried out.

Rachel Gerrett, who has been leading the team behind the project, said: "These final elements of our play park will allow lots of children of different ages and abilities to play at the same time, providing several different types of physical challenge."

Graffham Rec Chairman John Bracey added: "Huge thanks to Chichester District Council for this final donation to complete our fund-raising and to our district councillor John Cross for his support with our application – and of course to everyone who had already donated and to Rachel and the team. It is a real credit to the village that this once-in-a-generation project has been completed entirely through charitable and public grants, private donations and Gift Aid – without having to dip into the parish council precept for one penny."

Planners to rule on The Woodcote by 1 August

The South Down National Park Authority (SDNPA) says it will decide by the start of next month (1 August) whether to approve The Woodcote's expansion plans. If the officers decide to refer the issue to the body's planning committee for a ruling, however, that cannot take place until Thursday 11 September at the earliest, as that is when its next meeting is scheduled.

The restaurant with rooms that used to be The White Horse wants to triple in size, knocking down its existing six guest rooms and building 16 new ones in the field further to the south, converting the former pub into a bar and bistro, constructing a new restaurant, private dining/event room, lounge, kitchen, staff and service areas, making a new car park for some 70 vehicles with an overflow parking area and kitchen and flower gardens.



The Woodcote's new car park, restaurant and service unit would be built in the field to the right (west) of the existing main building.

While the proposal has gained a few supporters, more than 100 objections have been filed, including from the SDNPA's Landscape and Design Officers.

The Landscape Officer said the plans had not responded to the advice provided in the pre-application process. She described it as being "of an incongruous scale, with uses and designs that fight against, rather than work with, key characteristics and functions of this landscape". Her Design counterpart raised concerns over the scale of the expansion, noting "this would not represent a scheme which conserves and enhances the national park".

You can read both submissions in full and all other comments made about the proposal at bit.ly/woodcote-planning

Hedge cutting clarification A number of readers have pointed out that the RSPB advice on hedge-cutting in July's *Graffham Parish News* applies only to non-agricultural land. The law applying to agricultural land in England has been made far more restrictive since 23 May 2024 by The Management of Hedgerows (England) Regulations 2024 – which includes a ban on cutting and trimming hedgerows on agricultural land from 1 March to 31 August as well as a requirement for a two-metre buffer green strip alongside hedgerows.

Planning applications and decisions

Details for Graffham and East Lavington filed with the South Downs National Park since our previous edition. For details, see bit.ly/sdnp-planning

Applications

Glenmore, Norwood Lane, East Lavington GU28 0QG: Replacement rear conservatory extension with new single storey extension. SDNP/25/02639/LDP. *Received and validated 26 Jun 2025. Determination deadline 21 Aug 2025.*

Decisions

The Last Post, Graffham Common Road, Graffham GU28 0PU: Two-storey storage building for private use associated with dwelling, to provide equipment/workshop facilities in association with woodland management. SDNP/25/01269/FUL. *Refused 17 Jul 2025.*

1 New Homes Of Rest, The Street, Graffham GU28 0NW: Internal alterations to create two new en suite bathrooms, and repairs to two windows on north elevation. SDNP/25/00733/LIS. *Approved 2 Jul 2025.*

Barnetts Farm, Fitzlea Wood Road, East Lavington GU28 0QN: Restoration of existing dwelling to include replacement windows, two new/reinstated window openings on front and rear elevations and the reinstatement of original lean-to. SDNP/22/04552/HOUS and SDNP/22/04553/LIS. *Granted 30 Jun 2025*

3 New Homes Of Rest, The Street, Graffham GU28 0NW: Removal of internal partition walls and relocation of rear door to allow a suitably sized kitchen and bathroom. Renovation of existing windows and installation of secondary double glazing. Removal of one modern standard metal window and softwood shed door to facilitate bathroom layout. SDNP/25/00020/HOUS and SDNP/25/00021/LIS. *Approved 20 Jun 2025*

Appeals

Little Bury, Norwood Lane, East Lavington GU28 0QG: Change of use of redundant agricultural building to holiday let. SDNP/25/00006/REF. *Refused 10 Jul.*

Property watch

Homes for sale locally, posted at [rightmove.com](https://www.rightmove.com) since our previous edition:

Weavers, Graffham Common Road, Graffham GU28 0PU: Detached house. Details not yet posted to [rightmove.com](https://www.rightmove.com) or to the estate agent's website, so guide price undisclosed. *King & Chasemore, Midhurst 01730 774838.*





15 Guillods Cottages, Graffham GU28 0NR: Semi-detached house. Four bedrooms, two bathrooms, living and dining rooms, home office, kitchen, utility. 147 sq m (1,588 sq ft). Garden with garden room backing onto fields. Guide price £625,000-650,000. *King & Chasemore, Midhurst 01730 774838. Listed 2 Jul.*

1 Boderton Mews, Burton Park, Duncton GU28 0LS: Semi-detached house, three bedrooms, two bathrooms, sitting room, kitchen/diner. 155 sq m (1,664 sq ft). Private garden with access to Burton Park's grounds and facilities. Guide price £845,000. *RH & RW Clutton, Petworth 01798 303593. Listed 30 Jun.*



The Grain Store, Peace Lane, Heyshott GU29 0DE: Period barn conversion, one bedroom, one bathroom, open plan living area with kitchen, dining and sitting spaces. 31 sq m (337 sq ft) plus mezzanine. Garden. £225,000. *Southdown Property Solutions, Midhurst 01730 771322. Listed 16 Jun.*

The Stables, Barlavington Manor, Burton Park Road, Heath End GU28 0JS: Converted stables/coach house, two bedrooms, one bathroom, living/dining room, kitchen. 97 sq m (1,049 sq ft). Garden with double garage. Guide price £475,000. *RH & RW Clutton, Petworth 01798 303593. Listed 16 June.*



Puffins, West Lavington GU29 0EQ: Detached bungalow, two bedrooms, one bathroom plus cloakroom, sitting room, kitchen/diner. 104 sq m (1,125 sq ft). Garden with garage. Offers in region of £850,000. *Henry Adams, Midhurst. 01730 771345. Listed 26 June.*

Sutton End, Sutton RH20 1PY: Grade II listed semi-detached cottage, two bedrooms, one bathroom, living room, kitchen, outbuilding with two rooms and bathroom. 110 sq m (1,186 sq ft) including outbuilding. Garden and paddock of 2 acres. Guide price £625,000. *Savills, Petworth. 01798 303558. Listed 9 Jun.*



Woodberry House, Burton Park Road, Heath End GU28 0JU: Ground floor apartment, three bedrooms, two bathrooms, living room, kitchen/diner. 91 sq m (982 sq ft). Private garden with allocated parking. £450,000. *King & Chasemore, Midhurst 01730 774838. Listed 10 Jul.*

THE WOODCOTE



LUNCHTIME SET MENU. THREE COURSES, £30

DINE, EXPLORE, STAY

T 01798 867331

THEWOODCOTE.COM

Have your say on Sussex local government

Graffham residents – and their neighbours throughout Sussex – are being urged to have their say on shortlisted options for the future of local government across the region. The Westminster government has already decided that West and East Sussex County Councils, along with Chichester District Council and the other 12 district, borough and city councils across the two counties should be replaced by new ‘unitary’ authorities by 2028.

A survey everyone locally is being encouraged to complete provides an opportunity to give your views on the best way forward.

The plan is to replace the current three tiers of local government with two, with the county councils merged with district, borough and/or city councils, providing all the services currently split between the two levels. Parish councils would, at this stage, be unaffected. Coordinating the new unitary bodies in Sussex would be a mayor, elected by the local population.

Three options are being tabled for our area. These would see our Chichester District Council merged to form a new unitary body covering with:

- All seven other district and borough councils in West Sussex, covering more than 900,000 residents.
- Neighbouring Arun District Council and Worthing Borough Council the other side of it, with 408,000 residents.
- Those two other councils plus Adur District Council, the far side of Worthing, covering a total of 473,000 residents.



The survey – available to complete at www.shapingwestsussex.org – closes on 13 August. The website also features more information on the proposals.

It states: “This is a significant change that will affect how local services are run in the future – and how decisions are made about the things that matter most to you. That’s why it’s vital that residents, community groups, and businesses have their say at this early stage. Your input now will help build a strong foundation for a new council that truly reflects the people it serves.”

Whatever changes are agreed, vital local services will continue – from waste collection and public health to care for older people and support for families. The aim of local government reorganisation is not to reduce services, but to simplify how they are delivered and to ensure that local voices are heard more clearly in decision-making.

Village shop association aims to reduce debt

Graffham Village Shop Association (GVSA) owns the premises operated by Jeeva and Vasu, the workshop alongside it and the Chapel View residential unit. Here's an abridged version of Chairman Steve Dover's report to its AGM, held on 17 July.

The GVSA is fortunate to benefit from great tenants – in particular Jeeva and Vasu's shop is an enormous asset to the village. Stephanie Marx has run the picture framing business in the workshop for many years, while Helen Reid is a good tenant at Chapel View. Nevertheless, managing these properties takes a considerable time and effort and there are long term issues that we need to consider and eventually resolve.

Little money has been spent on developing the shop in the past decade. At some stage Stephanie Marx will retire from her picture framing business and we will then have to decide what to do with the workshop. People have suggested various ideas from turning it into a coffee shop, village meeting area or a drop-in office area. Whatever we do, it needs to mesh with the shop. It is just a light industrial unit now, so it is likely to need insulation and heating as well as being fitted out for its new role – and all this will cost money.

When the shop was extended and the Chapel View housing unit built 10 years or so ago, the GVSA at the time had limited financial resources and issues arose during construction which required compromises being made, but that means a lot of maintenance is needed now.

So, there is a common theme – while GVSA is meeting its primary objective of providing a vibrant shop, we would benefit from more money to cover maintenance costs and further develop the site.

Ideally, we'd like to get rid of the loan taken out when the shop was extended, which currently stands at a little below £100,000. Interest and repayments cost us some £14,000 a year. If we were able to eliminate this loan, we could redirect our income to develop the buildings in a way that would benefit the village. The committee is working through options for how we could do this – watch this space! As it was, in the year to end March 2025 the GVSA made a net profit of £10,000 on revenues of £40,000. That surplus has been used to boost reserves – which we will need to dip into next year when we expect to record a financial loss as we pay for much needed maintenance to the buildings.

- Villagers are encouraged to participate in the GVSA by becoming shareholder members. For more details, please contact rosalind.britton@btinternet.com.

Welcome to the village, Lucy, Alex and family!

Author Lucy Foley now calls Graffham home, after moving into one of the village's oldest and most distinctive houses. Between busy speaking tours to promote her latest best sellers, she, with diplomat husband Alex Colley and their children have been unpacking at Church Farm between St Giles and the Downs.

Former owner Jane Pickering is staying in the village, downsizing a few hundred metres north up The Street to Tinkers, opposite The Woodman.

Lucy has topped The Sunday Times and New York Times best seller lists with her murder mysteries *The Midnight Feast*, *The Paris Apartment*, *The Guest List* and *The Hunting Party*. Earlier this year, she was signed by publishers HarperCollins to write the first full-length continuation of Agatha Christie's iconic Miss Marple thrillers. She's also the author of top selling historical novels *The Book of Lost and Found*, *The Invitation* and *Last Letter from Istanbul*. Her books have sold more than five million copies and been translated into multiple languages.



A Sussex girl, she attended Westbourne House School, near Chichester. Before taking up writing full-time, she worked as a fiction editor, a literary agent's assistant and a bookseller.

Sometimes known as Thraves, Grade II-listed Church Farm is a traditional oak-framed building, believed to date back to the 12th century with additions from the 16th Century, although architectural archaeologists describe it as a medieval four-bayed hall house. At one time, it is understood to have served as the parish rectory.

Graffham connection to Salt Path book drama

There's a Graffham connection to the drama that has been rocking the world of publishing for much of the past month. Former village resident Bill Cole, who lived in Selham Road until around a dozen years ago and is still based locally, has been revealed as the kindly soul who gave author Raynor Winn and her



Bill Cole let The Salt Path couple stay at his Cornish cider farm for four years.

► [Continued on next page](#)

► Continued from previous page

husband Moth a roof over their heads after reading of their plight in her best seller *The Salt Path*. He let them live on his Cornish cider farm for a very low rent with a small fee for helping out. During their four years there, Raynor wrote the second and third books in her series, *The Wild Silence* and *Landlines*. The first in the trilogy has just been released as a movie, also called *The Salt Path*.

The books tell of the couple's struggles after they lost their home while Moth faced what was described as a life-threatening illness, and how they were helped by the long-distance walks they undertook and the people they encountered along the way.

The Observer – the national Sunday newspaper, not the local weekly – last month raised questions over a number of key elements of the story.

Bill became close friends with Raynor and Moth while they stayed on his farm but told *The Observer* he was perplexed why the couple had not shared with him good news they had been given about Moth's health and why they had not included him when celebrity chef Rick Stein filmed a segment for one of his TV series on the Cornish cider farm.

The couple terminated their tenancy at the farm a year earlier than agreed and had already moved on when Bill went to bid them farewell. *The Observer* quoted him: "I feel there is so much more we don't know about these people."

Fashion Exchange set for fourth season

Graffham's Fashion Exchange is returning for a fourth season – by popular demand. It will start its run at St Giles Church on Sunday 17 August where it will remain for a week, moving to the Rec for the village fête on Bank Holiday Monday 25 August before shutting up shop.

It's a chance for you to clear out your wardrobe and drawers and give away items of clothing you no longer want – and to find something that you would love to wear. No money changes hands. It's all for free – although donations to St Giles would be welcome.

If there's anything you would like to donate, please hang it tidily on the rails at the church from Sunday 17 August onwards. Men's, women's, children's clothes are welcome and do take whatever you fancy.





Your good health! Graffham Health Support Association held its annual thank-you party for the villagers who volunteer to drive its members to their various medical appointments throughout the year – on the gloriously warm and sunny evening of Thursday 10 July, in the garden at the Empire Hall. You could join the throng next year if you respond to its appeal for more volunteers. See the advert below.

GRAFFHAM HEALTH SUPPORT ASSOCIATION

COULD YOU BE A VOLUNTEER DRIVER?

Graffham Health Support Association (GHSA) organises transport for members to and from NHS appointments including visits to the doctor, hospital, opticians and dentists etc.

We are extremely lucky to be supported by wonderful volunteer drivers who use their own cars and give their time to drive GHSA members to appointments (for which fuel expenses are covered annually by the GHSA).

We are now looking for more volunteer drivers to help spread the time commitment for the many requests we receive and there's no pressure to accept a request if it is inconvenient.

Could you spare a little time to help this very worthy cause? As one of the volunteer drivers said the other day: "I'm happy to do it as it will be my turn one day!"

If so, we would love to hear from you. Please call 07391 802541 and one of our committee members will get back to you.

Lavington Stud and Estate gains organic status

Lavington Stud and Estate has been certified as organic by the Soil Association after completing a two-year conversion programme to comply with the body's rigorous and exacting standards.

The 390 acres of mainly meadowland were bought by James and Bianca Pitt in 2021 after they had been used for around a century by the Buchanan-Macdonald family to rear top-flight racehorses. Since then, the Pitts have added some 260



more acres of predominantly woodland on Graffham Down's scarp slope. They already owned Hoyle Farm, on the borders with Heyshott – which achieved Soil Association organic status two years ago. Goodwood's Home Farm is believed to be the only other farm locally to hold this certification, along with Plaistow's Lee House Farm and Rookery Farm near Bognor Regis.

The land at Hoyle, and more recently at Lavington too, is used by Brett and Katie Sacks for their Slow Grown Farm's herd of rare native Red Poll and Northern Dairy Shorthorn cattle and Saddleback pigs – producing their highly regarded cheese, charcuterie, beef and pork.

During the two-year certification period, Lavington had to follow all organic requirements, covering farming practices, animal welfare, processing and packaging. The Soil Association's standards are stricter than European organic regulations, including additional measures to protect the environment, promote



The cattle reared by Slow Grow Farm at Lavington and Hoyle exceed the Soil Association's organic requirements with their 100 per cent grass diet.

animal welfare and ensure human health. Its inspectors visited Lavington and will continue to do so annually to carry out thorough inspections. They can return at any time unannounced for extra checks, to review practices and paperwork.

Bianca Pitt said: "We are strong advocates of organic farming – it is better for the planet, animals, wildlife and people – so we are delighted that Lavington Stud and Estate has joined our Hoyle Farm in gaining this highest



Lavington Stud and Estate, which stretches across 650 acres of Graffham and East Lavington, has just been certified as organic by the Soil Association after a two-year assessment programme – making it one of the few farms in the area with this rating.

fully organic status. Achieving this certification was a natural step for us. The way we were already farming here meant we didn't have to change any practices – we were already meeting the standards required and, in many ways, we've been going way beyond them. For example, our Slow Grown Farm dairy and beef herds are 100 per cent grass-fed."

Explaining just some of the detail involved in the process, she noted: "Many people believe organic is simply about not spraying crops with chemicals, but it's so much more than that. Yes, all synthetic weedkillers and fertilisers are banned, but farming organically also means you cannot use routine antibiotics or genetically modified

**Home Grown's diary of a new farm
– pages 38-39**

ingredients, including in animal feed, besides highly regulating animal welfare."

It brings many side benefits, she pointed out, attracting and nurturing much more insect life, slowing or reversing the global decline in the creatures that are vital in pollinating plants. Largely as a result, biodiversity is a third more than on other farms. Farming organically also produces half as many emissions.

Bianca concluded: "For us, organic isn't just about the label – it's about supporting and committing to a movement that nurtures the land, respects animals, and builds a healthier future for people and the planet."

In March, 14 of Lavington's fields, covering a total of 104 acres, were sown – by drone – with some 100 kg of traditional meadow wildflower seed.

Why spruce needs to be felled at Lavington

A tree felling operation will begin at Lavington Stud and Estate in the coming weeks as part of a wider effort to protect woodlands from the spread of a deadly pest recently detected in South East England. Freddie Hemingway, Assistant Forest Manager at English Woodlands Forestry, which will undertake the work, explains why it is necessary and how it will be done.



Just 5mm long, the eight-toothed spruce bark beetle poses a major threat to woodland across the country.

The eight-toothed spruce bark beetle *Ips typographus*, which has recently made its way to this part of the world, poses a serious risk to spruce trees, particularly those stressed by drought or damaged by wind. Vulnerable trees can become infested and killed. If beetle numbers are high enough, they can spread to healthy spruce trees.

Lavington Stud and Estate sits within a zone established by the Forestry Commission to help prevent the spread of this destructive pest. This summer's operation covers roughly 1.7 hectares

(4 acres) within a larger woodland block and is a pre-emptive measure, encouraged and supported by the Forestry Commission.

We aim to fell vulnerable spruce trees before the beetle arrives in the area. If the beetle were to become established, it could spread rapidly and cause wide-spread damage. By acting early, we can significantly reduce the risk of infestation, both on this site and in the surrounding landscape. Taking pre-emptive action also allows us to carry out the operation at the best possible time, rather than under the time constraints of a Statutory Plant Health Notice, which would legally require rapid felling in a short space of time, regardless of weather and site conditions. With the Lavington team, we have chosen to carry out the work during the summer, which will minimise soil disturbance and reduce run-off of sediment.

Our team at English Woodlands Forestry has experience with similar operations in the Graffham area and is familiar with the strict guidelines that must be followed for this kind of work. All trees will be professionally inspected before any felling takes place and all felled timber will be removed promptly. Everything we do will be with care and respect for the environment, and in line with best practice. We understand that tree felling can raise questions, especially in a place as naturally beautiful as Graffham and East Lavington. It's important to emphasise that this

operation is a biosecurity response to a growing pest threat and is strongly endorsed by the Forestry Commission and the South Downs National Park Authority. It is being carried out in the interest of long-term woodland health and to protect the health of forests across the UK, many of which the beetle has not yet reached.

Looking ahead, the site will be fully replanted following the operation. We are committed to restoring the area with a diverse mix of native broadleaf trees, including oak, small leaved lime, wild cherry and field maple. These species are well suited to the local environment and will improve resilience to pests and diseases. We will also retain pockets of open space, which will help the woodland support a wide variety of habitats and wildlife, and contribute to the long-term ecological stability of the area.

We appreciate the interest and concern of the local community and want to reassure residents that everything possible is being done to manage the process responsibly. We are proud to be playing a part in protecting and restoring our local woodlands for future generations.



Stressed spruce are particularly vulnerable to the pest.

Walk to witness Westerlands' regeneration

The Friends of the South Downs will be visiting Westerlands on Monday 11 August from 10.30am for a walk to see the estate's regenerative farming in action. It will be led by the group's Gerald Gresham Cooke with farm manager Oliver Hancock.

Gerald said: "We are privileged to attend this very special walk to see a former stud turning its estate from horses and fields to shift purposefully towards a regenerative farming model, balanced with a strong desire to reverse biodiversity loss. Positive results are already being observed through the year, especially with increased numbers of birds of different species – a good barometer for overall farm health."

The tour will cover three miles, taking two hours, starting at Westerlands' Horse Box Cafe. Everyone is welcome. To book a place, contact Gerald at geraldgreshamcooke@gmail.com

DORSET HOUSE SCHOOL

INDEPENDENT PREP SCHOOL

FOR CHILDREN FROM RECEPTION TO YEAR 8

Just 15 minutes from Graffham



OPEN MORNING
FRIDAY 26th SEPTEMBER
9.30 am—11.30 am

'BE THE BEST YOU CAN BE'
Morning minibuses and after school clubs

Part of the Lancing College Family of schools
from September 2025

Please call 01798 831456 or visit
www.dorsethouseschool.com to find out more.



Unicorn date to raise brain tumour charity funds

Heather and Rob Russell, of Guillods Cottages, are arranging another special evening at Heyshott's Unicorn to raise funds for the Brain Tumour Charity. It will take place on Saturday 4 October from 6pm, with live music from Willie Austen and Paul Stenton, a buffet dinner and raffle. Tickets, at £10 each, are available from The Unicorn. Heather, Rob and their family have been raising funds for the cause since



their daughter Jade was diagnosed with the condition, and they lost a dear friend to cancer of the brain. The event they staged at The Unicorn a year ago brought in £1,784 for the charity – with Cocking Church contributing a further £250.

Contractors out to maintain public rights of way

West Sussex County Council contractors, in liaison with Graffham Parish Council, will be carrying out regular maintenance of public rights of way (PROWs) in the Graffham area this month, including addressing signage, plank bridges and surface vegetation that has become so overgrown that it is difficult to follow a path. Landowners are reminded, however, that is their responsibility for checking and fixing broken stiles and gates and cutting back side and overhead vegetation along PROWs on their land.



Dorset House joins Lancing College family

Dorset House School – one of the nearest preps to Graffham and a regular advertiser in this magazine – is merging with Lancing College. Dorset House will become part of the Lancing College family of schools, along with its established 'feeders' in Hove and Worthing. It will remain independent with its own identity, preparing boys and girls for a wide range of senior schools.

New hands take on local brewery Langham's

Our local brewery – Langham's, between Halfway Bridge and Lodsworth – has a new owner. Twenty years after founding the business that has quenched many a Graffham thirst, Lesley Foulkes and James Berrow are retiring and passing their baby on to Charlie Long, who has extensive brewing experience from Fuller's and Wimbledon Brewery.

He is committed to building on the brand's quality, character and community, while retaining the existing team and main treasured brews. He said: "I have been a big fan of Langham's brews and ethos for many years. Serendipity arose when my family and I were looking to relocate to the area and raise our kids in this glorious countryside location. A chance conversation led to the opportunity to take the reins of the business, so the timing was perfect."

Lesley added: "Charlie has the most excellent beer credentials – he completely understands beer– and we love that he will keep the legacy of Langham's award winning beers and community ethos alive and thriving in the years to come."

Letters to the editor: The column YOU write

Something in Graffham Parish News or the village caught your eye? Drop us a note at editor.graffhamparishnews@gmail.com We're always pleased to hear from you!

I always thought the print quality of *Graffham Parish News* has been of a high quality in recent years, but now, since the change over to your new printer, the issues have a real quality look to them, please pass on my congratulations. – **Colin Barker, Bishops Hill Cottage, Graffham.**



Hear how the past year has been for 'the grand old lady of the village', show your thanks to the outgoing committee and welcome in the new team

EMPIRE HALL AGM

Monday 1 September 7pm

**Committee Room
All welcome**

Movie night is back – starting in the open air

Graffham Empire Movies (GEM) is gearing up for its 2025 autumn season – starting by linking up with the Foresters Arms to offer a late summer screening in the great outdoors. That first event, on Saturday 6 September in the pub's garden, will be a fund-raiser for St Giles Church, whereas GEM usually makes donations to support the Empire Hall, where its screenings otherwise are held, using the building's new state-of-the-art audio visual system.

There's no entrance charge or advanced booking for the Foresters' film, though the audience is encouraged to make full use of the pub's bar and kitchen. For GEM screenings at the Empire Hall, tickets are £10 for adults and £5 for under 18s, bookable in advance via ticketsource.co.uk/GEM or at the door on the night. Again, there's a bar – and interval ice creams.

Saturday 6 September 8pm

Foresters Arms garden

A Good Year

Certificate 12A 118 minutes



A classic rom-com based on a book by Peter Mayle, directed by Ridley Scott and starring Russell Crowe, Albert Finney and Tom Hollander. Max is a successful, arrogant but cheeky workaholic London trader who inherits a Provencal vineyard from his uncle, which he determines to sell.

Saturday 18 October 7 for 7.30pm

Empire Hall

A Complete Unknown

Certificate 15 141 minutes



Rated one of the best films of the past year with nine Oscar nominations, the biopic tells the story of a then unknown Bob Dylan's arrival in New York on his meteoric rise, culminating in a ground-breaking performance that reverberates around the world. Timothee Chalamet stars.

Saturday 22 November 7 for 7.30pm

Empire Hall

Bridget Jones: Mad About The Boy

Certificate 15 125 minutes



The latest in the hilarious diary series, based on the books by Helen Fielding, starring Renée Zellweger, Hugh Grant, Colin Firth and the rest of the usual cast, with Bridget now a widowed single mother navigating parenthood, work and modern dating with the support of her friends and family.

School report: Goodbyes and thanks



With the end of the school year upon us, Graffham Infant and Duncton Junior Schools Business Manager Jenny Godfrey provides her monthly update.

What a school year it's been! Writing as we approach the summer holidays, there's been no slowing down at Graffham Infant and Duncton Junior Schools. From lively rehearsals for our summer performances to the creation of new vegetable gardens, the schools have been buzzing with energy.

We've been truly touched by the incredible support from our local communities this year, from residents volunteering to read with pupils to local farms and landowners hosting visits and forest school sessions. Their kindness and involvement have meant the world to us. A heartfelt thank you to them all.

At the end of the summer term, we also said a few goodbyes – to class teacher and governor Alex Harris, teaching assistant Claire Waldron and our school therapist Beth Stamper, with thanks for all their contributions. We also bade farewell to 12 fabulous Year 6 pupils at Duncton. We have 18 equally wonderful Year 2 pupils leaving Graffham, 15 of whom are moving up to Duncton, and this is nicely matched with 18 joining Graffham's Reception in September. We look forward then to welcoming also Tilly Gafford as our new Year 3/4 teacher at Duncton, and Jackie Horne as our new school therapist.

We also wave goodbye to Dee Mills, who is stepping down from her rôle as a governor. We're so grateful for her dedication and support. We're thrilled to welcome Graffham villager Roy Barden who will bring a wealth of experience to our governing board – and I'll be stepping into Mrs Harris' shoes as the new staff



Fun with a parachute in Graffham Infant School's playground.

governor. We still have a couple of spaces on the governing board so please do get in touch if you would like to find out more.

You may have already heard about our fund-raising efforts for new playground equipment at Graffham Infants. We were incredibly moved by the generosity of Lavington Stud and Estate, which kick-started the campaign with a £5,000

donation. To learn more or to contribute, visit gofund.me/653cf82c. We're also planning fundraising activities for Duncton Juniors – watch this space!

While schools are out for the summer, work on the roof at Graffham (see *Graffham Parish News* July 2025) is due to start, very soon after the end of term although we don't have an exact date at the time of writing, as the contractor was waiting for the final ecology and buildings survey reports to come back, planning approval to be granted and for the replacement tiles to arrive. The team is aiming to complete as much as possible of the project before the new term starts, with the remainder to be completed during the 2026 summer holidays, to minimise disruption to and ensure safety of pupils. We do hope the work causes no bother to any of our neighbours.



Copies of these amazing representations of Graffham Infant and Duncton Junior Schools are now available to buy – with all proceeds going to the Friends of Graffham and Duncton parent-teacher association for spending on school projects.

The original watercolours were commissioned as farewell gifts for Helen Martin, who retired as head teacher at the end of December. They are creations of illustrator Hannah Watchorn, whose children used to attend the schools – and who counts The White Company among her design clients.

The high-quality copies available to buy are A4 sized and printed on art smooth 200gsm paper. They are priced at £15 each, unframed – a perfect gift for anyone associated with the school.

To order your copies or for more detail, send an email to office@graffhaminfant.org.uk



Wedding bells

St Giles Church was the venue for two weddings on Saturday 28 June.

Wedding bells 1: Ella and Marcus

The wedding of Marcus Beresford and Ella McEwen on Saturday 28 June at 2.30pm was one of the biggest held at St Giles Church for many a year. The couple live at Heyshott – but its St James was too small to hold the 200 family and friends they invited to join them on the day, so the next nearest church came into play.

Horses play a big part in their lives. Marcus is a polo player. Ella rode for the British Pony Team as a junior and now works for British Eventing. Her father Bobby is one of England's top equine vets, based in Wiltshire, and her brother Tom, who was one of the six ushers and read from *Captain Corelli's Mandolin* at the wedding, won gold medals in team eventing at both the Tokyo and Paris Olympics.

Marcus hails from Ireland, with his parents Lord and Lady Waterford, of Curraghmore House. So the congregation included many who had crossed the Irish Sea – and some too from New Zealand, where he has also played polo.



Ella wore a white gown for her wedding, and was walked down the aisle with her father, accompanied by five bridesmaids, a page boy, four flower girls and a ring bearer.

The marriage ceremony, led by the Rev Vivien, included a Maori blessing, honouring Marcus' time in the Land of the Long Cloud, given by friend Ross George. While the register was signed, the Tallis Consort sang. A trumpeter accompanied the organ for the final hymn, *Jerusalem*.

At the end of the service, Ella and Marcus were joined, walking down the aisle out of the church, by their pet Dachshund, before hosting a reception in a marquee in their Heyshott garden.



Wedding bells 2: Paul and Michaela

Beside English, there were words in Croatian and German at the wedding of Paul Rowney and Michaela Janja Lulic at St Giles Church on Saturday 28 June – reflecting the bride's heritage, the country where the couple now live and the nationalities of many of the 50 or so guests invited to join them on their big day.

Paul is perhaps better known locally as the son of Ann Rowney, who has lived in Graffham for many years, currently at September Cottage on The Street, and has played an active role in the village. Apart from that personal connection, Paul and Michaela chose to marry here rather than in Germany, where they live close to Munich, or in Croatia, where she hails from, because “it's a lovely village, with lovely people, a wonderful community feeling and we feel very at home here”.

The couple have been together for 18 years, since he gave her a lift on his motorbike on a company ride-out to the Italian Alps. It took them until 1 February this year to become engaged.

For the marriage, conducted by the Rev Vivien, Michaela, wearing a white gown, was walked up the aisle by her brother Michael, who was in traditional Croatian dress. They were accompanied by bridesmaids Vjera and Marta Pavelic, daughters of friends. Reflecting the colours of the flowers in her posy, Paul wore a blue suit with an orange waistcoat.

After the service, the newlyweds and their families and friends celebrated in the Empire Hall, drinking toasts to the bride and groom in German Sekt sparkling wine.

Proud mother of the groom Ann Rowney said: “Thanks to so many people in the village who helped in any way to contribute to what was a really very special day for Paul and Michaela. It really was lovely and made them both feel not only welcome but also part of the village.”

Golden wedding bells: Greg and Jacky

Jacky Williamson, as she then was, had just returned to England from two years working in the Netherlands for oil company Aramco and recently split from her boyfriend there, when the old friend she was house-sharing with persuaded her to tag along to a dinner party in West Sussex, being given by a long-standing pal of the friend's fiancé.

The host at first refused to include Jacky as an additional guest would have challenged his already stretched cooking abilities. He was eventually persuaded to relent. Eleven months later, he – Vincent Gregory – and dinner party gatecrasher Jacky married, at St Mary's Church, in Pulborough.

He had moved to the village while working as West Sussex's Archaeological Field Officer. They hosted their 100 guests after the ceremony at the house they were by then sharing, the Grade II listed 700-year-old New Place Manor.

That was on Saturday 9 August 1975 – 50 years ago, when Harold Wilson was Prime Minister and Typically Tropical were topping the charts with *We're Going to Barbados*. So

this month is their golden wedding anniversary. Not long after they wed, Greg, as he is more widely known, realised that archaeology was not a career for him, so they moved to the USA – his country of birth – where he took an MBA at Wharton while Jacky studied at the Pennsylvania Academy of the Fine Arts.

On their return to the UK, they settled in Hampshire, after Greg was hired by Esso as a business analyst. While living there, they spotted a wine bar up for sale in Bishop's Waltham. They bought it, initially with friends, for Jacky to manage. They went on to open a wine shop from the same premises and then acquired The



Jacky and Greg on their wedding day,
9 August 1975...

Milbury, a 400-year-old pub, derelict at the time, in the nearby village of Beauworth, nine miles this side of Winchester. From that, they developed a wholesale drinks business supplying 2,000 customers across seven counties.

By then, they had moved to a 300-acre farm five miles away at Owslebury, where Jacky looked after 300 sheep, 50 horses kept in DIY livery and rented out their arable land to a local farmer. They stayed there for 30 years.

Then 16 years ago Greg was diagnosed with MS and it became impractical. They sold the farm off in 17 lots over a number of years. They had no idea where they were going to move, but in 2011 Jacky spotted ‘for sale’ notices for East



Lavington's Northwood Farm and it ticked their key boxes – an old building (dating back to the 14th Century, it is one of the village's oldest) with land for her animals in a small village and within an hour's drive of their two daughters and four grandchildren.

They said: “Moving here has been the best thing we could have done. It's such a lovely place to retire and we've made some really good friends.”

... and 50 years on, in front of their Northwood Farm home in East Lavington.

Greg does not let his MS restrict him. With five

varieties of mobility scooter, he still manages to take their black labrador Boris for walks and, with his friends in the Wealden Building Study Group, carry out archaeological architectural surveys of some of the oldest buildings locally: “We've done 17 now in Graffham, dating back to 1407.” They continue to travel, while Jacky looks after her two alpacas and dog Boris, kayaks on the River Arun and rides her electric bike over the Downs.

They'll celebrate 50 years of married life with some of their nearest and dearest. Greg won't be cooking this time.

RIP Maggie Rixon 1936-2025

Margaret Rene née Kitchenmaster was born on 26 June 1936 and raised in Storrington in a house with a corrugated iron roof, no running water and an outside toilet. Her father died when she was two. Her mother worked long hours at the Marley tile factory.

Maggie's first job was in service at Parham House, where she met and befriended Jomo Kenyatta, the future leader of Kenya.

She met Paul Rixon at a village dance when he was posted nearby as an infantryman. They married in 1954 and lived initially with his parents at Iver Heath in Buckinghamshire, where

Laboratories and then hard for the deposit on a she was told it was children, but son Carl

Having worked part-supplement his income, pub and in 1974 the Horse in Graffham, when refurbished, having been Godman-Dorington (see page



they mastered the trade and, as newcomers to the village, overcame some resistance from a few locals, the tide turned and the pub became the social hub of the community.

After 14 hard but enjoyable years there, Paul was offered the opportunity to buy Playfoot & Page's butchers in Petworth. It thrived for a while, but with the arrival of Sainsbury's and Tesco in Chichester (along with a free bus service) the long hours increasingly yielded less reward, and the couple retired to Tangmere in 1999.

Maggie and Paul became grandparents and spent much time at Bosham Harbour or, thanks to the close ties they established with Seaford College while they were in the village, on the school's golf course. As she moved into her mid-80s, she showed signs of dementia. Paul died on Christmas Day 2024, which affected her profoundly. She broke her hip in April and spent her last weeks in residential care.

Maggie was a devout Christian and attended St Giles on Sundays as often as the demands of the pub allowed. She wished for her funeral to be conducted there – as it was on 24 July.

Maggie worked at the Rank Denham Studios, while saving house. After a miscarriage unlikely she would have arrived in 1969 nevertheless.

time at a local hostelry to Paul wanted to run his own family moved to the White the pub was being bought by village farmer Jim 43). After initial struggles while

RIP Polly Hodgson née Kingsmill 1965-2025

Polly Hodgson, who spent most of her early years in Graffham as the fourth of the five children of Graham and Diana Kingsmill, of Quiet Court, succumbed to cancer at the age of 59.

She was a beloved wife, mother, daughter, sister, friend, and an extraordinary nurse – a woman of unwavering dedication, whose life was shaped by her love for her family and her passion for caring for others.

She attended S. Michael's School, at nearby Burton Park and then Midhurst Grammar, completing her nursing training at Great Ormond Street Hospital and University College Hospital, qualifying in 1988.

She had a remarkable career in paediatrics, serving in a number of leadership roles and making a lasting impact on the lives of countless children and families. Her calling culminated in her appointment as chief nurse at Great Ormond Street. Earlier, she was instrumental in establishing the South East paediatric retrieval service, which saw specially trained doctors and nurses attend local hospitals to stabilise and transport critically ill children to intensive care units in London.

Professionally, she was a mentor, guide and inspiration to many. Her warmth, strength and sense of purpose touched all who knew her. She will also be remembered for her sense of humour – with an infectious laugh that could lift any mood. She could always find something to laugh about, especially when it came to herself. Even in difficult moments, she showed everyone how to smile through.

She leaves her husband Jed, their three grown-up children Oscar, Honor and Ottilie – and a legacy of kindness, courage, and commitment.

She was cremated at a small family gathering on 7 July with a celebration of her life to be held in her home town of Guildford on 8 August. In her memory, donations are invited to the Phyllis Tuckwell Hospice – go to justgiving.com and search for Polly Hodgson.



GRAFFHAM SUMMER FEST

ON AND IN AID OF THE RECREATION GROUND

✧ **BANK HOLIDAY MONDAY** ✧

25 AUGUST FROM 2PM

.....
Fun *AND* games
for all the family
.....

PAVILION TEAS

BBQ

LOCAL STALLS & ENTERPRISES

BEER TENT

ICE CREAMS

RAFFLE

TUG OF WAR

CHILDREN'S PLAY AREA

DOG SHOW

PIMMS

EGG TOSS

CAR BOOT SALE

COCONUT SHY

SPORTING CHALLENGE

HOOPLA

SPLAT THE RAT

AND... MUCH, MUCH MORE!

THE DOG SHOW



- | | | |
|---|------------------------------------|--|
| 1 | Most Handsome Dog (3-8 yrs) | |
| 2 | Prettiest Bitch (3-8 yrs) | |
| 3 | Best Child Handler | |
| 4 | Best Puppy (Up to 2 yrs) | |
| 5 | Best Owner Look-a-Like | |
| 6 | Best Veteran Dog or Bitch (8yrs+) | |
| 7 | The Waggiest Tail | |
| 8 | Best in Show (Winners Classes 1-7) | |



Judging by Bernard Bayly and George Grammer



YOUR VILLAGE FETE NEEDS

YOU

If you'd like to run a stall, help on a stall, bake a few cakes, donate a raffle prize, offer a little time for car parking, help setting up or taking down, putting on an event, showing your artwork or just some good ideas –

please contact David Sparkes on 07958 655288.

Any time you can spare, even just on the day, would be great.

No contribution is too little – come and join in!

CAR BOOT SALE

Make some loot from your boot!
A part of the Fete so plenty of potential customers. £10 per pitch.

Contact Sonya Gillespie
graffhamrecpavilion@gmail.com



From Town Hall: Well done to Graffham!

Our representative on Chichester District Council, John Cross, provides his regular update on his key issues of focus right now.



The final awards from the Rural England Prosperity Fund have just been announced by the Grants and Concession Committee at Chichester District Council (CDC), despite the very late allocation of this funding to local authorities by the Westminster government – and I am pleased that Graffham Parish Council received the largest grant, enabling it to complete the village’s new Play Park, at the Rec.

CDC received the money in April – with a requirement that it should all be spent in the same financial year. After a concerted push by the council and its members, parish councils and other community groups applied quickly for funding. Many small awards across the rural district were made, with six or seven larger amounts awarded. Congratulations to Graffham for getting the great deal of information needed together so quickly and for being successful in its bid for this financing.

There are still other sources of funding and grants available via CDC for parish councils and community groups. Details can be found on the CDC website under ‘Community and Living/Grants Programmes’. They include the UK Prosperity Fund (UKPF) as well as money set aside by CDC for community projects.

There are also grants available for individual householders who are on limited incomes through the ‘Supporting You’ scheme. This is often used to pay towards insulating or improving the energy efficiency of a home when residents otherwise would not be able to afford such improvements.

Lots on this summer The summer is upon us. While many villages are staging activities, don’t forget also that Chichester, Midhurst and Petworth are all putting on numerous summer events, many of which are fully or partly funded by CDC. For details, see the *Initiatives* magazine or chichester.gov.uk and look under ‘Leisure and Culture/Events’. There really is something for everyone. Some are specially for children and many are free.

Finally, many may not have heard of The Great Sussex Way (TGSW), a tourist destination website that will signpost you to many events that are going on across the whole district, catering for all ages, and all pockets, and can be useful to see what to do in the area, whether for a day away, looking after grandchildren or wanting to take visitors to the area somewhere special. See thegreatsussexway.org. Enjoy your summer.

Garden Group fills hall with flowers and veg

The Empire Hall was filled with flowers, fruit and veg, photos and home cooking for Graffham Garden Group's 2025 summer show, on Saturday 12 July. Organiser Marie Bracey said: "We had a slight drop in entries from last year's record but the number of villagers taking part was the same. This is good news as a couple of keen competitors were sadly missing and we hope to welcome them back next year."

While the number of fruit and veg exhibits was unchanged, there were slightly fewer floral entries – perhaps also a reflection of spring and summer's scorching weather. Once again Jim and Carole Kirke were the gardeners to beat with both their flowers and vegetables coming in first – but only a couple of points ahead of Richard and Alison Davidson, Jude Sennitt and Molly Allen. In flower arranging, Veronica Crickmay was the star of the show, with photo honours shared between Jill McLean, John Bracey, Richard Davidson, and, winning the prize for best photo in the show, Nicky West.

In cookery the "favourite tea time cake" category proved particularly popular and attracted new entrants but here Carole Kirke's delicious

► [Continued on next page](#)



Carole Kirke's raspberry and pistachio cake was best entry in the home produce section.



Cup winners from left: Carole and Jim Kirke, Richard and Alison Davidson, Veronica Crickmay and Nicky West.



The competition for the village's best sweet peas is always hotly contested – with Peter Hardcastle delighted to triumph again.

► *Continued from previous page*

raspberry and pistachio cake could not be beaten. Another popular class was cheese biscuits with Dianne Hardcastle taking... err...the biscuit.

Although its main event of the year is now behind it, Graffham Garden Group still has two more outings to some of the most noteworthy local gardens scheduled - see page 37.



The scorching weather and absence of a few regular competitors meant there were slightly fewer floral entries than a year ago (above) but the fruit and veg exhibits were just as numerous (left).

There was hot competition too in the raffle for the wonderful prizes donated by: Andy Beadsley, Park House Hotel, Rotherhill Nursery, Village Nurseries West Chiltington, Architectural Plants, Hennings, Bear, Maggie & Bell, Jane Pine-Coffin and Peter Hardcastle



Top snaps: This stunning picture of a pond on Graffham Common, by Nicky West, was judged Best in Show in Graffham Garden Group's summer show. Jill McLean won the Portrait category (below left), Alison Davidson the Landscape/Seascape class (below right) and John Bracey took top honours in the All Creatures Great and Small section (bottom right).



ULTIMATE COLDPLAY



UK'S LEADING TRIBUTE TO COLDPLAY!



**EMPIRE HALL, GRAFFHAM
PETWORTH GU28 0QB
SATURDAY 11TH OCTOBER 8.00PM**

**DOORS AND BAR OPEN 7.30PM
TICKETS FROM £25 PLUS £1 SERVICE FEE
WWW.BUYTICKETS.AT/EMPIREHALLGRAFFHAM**

Graffham Garden Group's summer outings

Graffham Garden Group has two more outings to local gardens scheduled this summer. To book your place, contact Nicky on 07796 144647 or at nicolamwest@btinternet.com The trips are open to all, not just members. Car sharing is encouraged so please always ask if you would like a lift!

Thursday 21 August 1.30pm

Visit to Woolbeding Gardens

Woolbeding, Midhurst

A rarely offered talk by head gardener himself Paul Gallivan before wandering around the 26 acres of garden 'rooms', now run by the National Trust and including a vegetable garden, 'The Long Walk', fountain, contemporary glasshouse and countryside views.



You'll need to book a ticket yourself online via nationaltrust.org.uk/visit/sussex/woolbeding-gardens. There is no on-site parking at the gardens so each ticket includes complimentary access to a minibus service to and from the gardens. The minibus departs from and returns to The Grange Car Park in Midhurst where you will need to leave your car. Parking charges apply.

The talk by Head Gardener Paul Gallivan is at 1.30pm so you'll need to take the 12.40pm bus (or earlier) and very latest 1pm from The Grange, Midhurst. Free for National Trust members and £13 for non members plus £1 towards the talk, payable to Nicky at the gardens.

Sunday 21 September 1pm

Visit to Meadow Farm

Pulborough RH20 1DF



Two acres plus wildflower meadows. Colour themed beds, formal pond, avenue to the Sussex countryside. Walled garden for fruit, cut flowers and vegetables. Orchard with hazelnut walk. Wildlife swimming pond with bog garden.

£7. Pay on arrival. Teas available. We will be visiting on an NGS open day.

Diary of a New Farm: Coping with the dry summer

Katie and Brett Sacks continue their occasional diary as they establish Slow Grown Farm, at Hoyle, on Graffham's Heyshott border, and Lavington Stud and Estate.

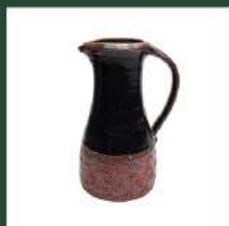


With the profound lack of rainfall we've experienced since spring, this is turning out to be one of our toughest years yet. The way we graze our cows at Hoyle does help mitigate against these soaring temperatures, by adding organic matter to the soil which helps retain moisture and protecting the soil with a layer of trampled grass. But we've still seen huge drops in the amount of milk we're getting.

As we are committed to being 100 per cent grass-fed, we won't turn to grain or other feed to try and increase the yield of our dairy cows, but we will have to dip into our winter hay stores, like many other cattle farmers across the UK. In terms of how long we've been grazing at Hoyle, it is still early days – so we're hoping that every year we'll see an improvement in the pasture quality and resilience.

BEAR PETWORTH

20th Century Design, Antiques, Home Accessories and Gifts



Stockist of Santa Maria Novella, David Mellor, Ichendorf Milano,
Vacavallente, Leach Pottery, and Villa Bologna Pottery.

Open Monday - Saturday, 10am - 5pm
10A New Street, Petworth, GU28 0AS

www.bearpetworth.com
Tel: 01798 651066

However, it's becoming increasingly evident that we need to prepare for an imminent future of high temperatures and reduced rainfall...

In lighter news, we recently welcomed a visit from the whole of Graffham Infant School, and Years 5 and 6 from Duncton Junior. Years R and 1 arrived just after a calf had been born and were lucky enough to witness her very first steps – a very special moment for us all! The children chose a name for the new calf – it needed to begin with the same letter as her mother Rye, and our name theme is plants, so they chose Radish.

We loved answering the children's questions and it felt like they were really engaged, which was evident in the amazing thank you letters that they wrote for us. They really absorbed everything we said!

If you'd also like to tour the farm and see our pigs, cows and calves, our next farm tours are on Sundays 27 July and 31 August. For tickets, visit www.slowgrownfarm.co.uk. Under 12s go free. Our pop-up shop will be open both these days 11am-2pm (our organic sausages are back in stock!) and we'll be serving our beefburgers off the BBQ from 12.30pm.

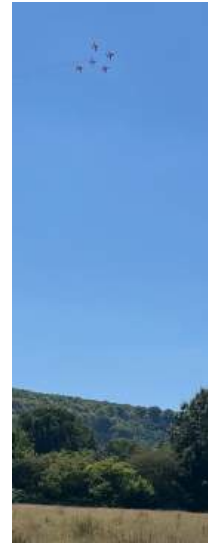
Just some of the many letters of thanks written by Graffham Infant School pupils (below) after their visit to Slow Grown Farm (right), when they clearly absorbed everything they heard and saw.



Midhurst Tailor Touch
MT
 sewing - alteration room

midhursttailor@gmail.com
 01730 642156
 Hollist House, West Street,
 Midhurst GU29 9NF

*Styling/Restyling
 Ladies & Gents Tailoring/Alterations
 Bridal/Bridesmaid Dresses
 Prom and Special Event Gowns
 Coat/Jacket Relining
 Leather/Fur Repairs*



Aces high The Red Arrows flew over Graffham on three of the four days of Goodwood Festival of Speed, where the flying aces put on displays, in mid July.

New or upgraded system? Call us today to arrange a FREE survey



SCORPIO
 FIRE & SECURITY

- ★ Intruder Alarms
- ★ CCTV
- ★ Entry Phone Systems
- ★ Fire Alarms

t. 03300 945596
 w. www.scorpio-alarms.co.uk
 a. Pippin Farm, Toat Lane, Pulborough RH20 1BZ

THE FLOORING BROTHERS
theflooringbrothers.co.uk

LET US PUT THE COMFORT BACK UNDER YOUR FEET!

Locally based carpet and vinyl fitters and suppliers

Small family business with no large overheads so we offer sensible prices, combined with a friendly personal service from start to finish

Jon: 07595 873598
 Lucas: 07532 453873
info@theflooringbrothers.co.uk



Bill's bygones: Callan, Challen, gallon

A regular feature in which joint editor Bill Barrett looks back at what was happening in the village and the wider world this month in the past.

10 years ago – August 2015: Molly Clay and Nikki Sanders win Graffham Tennis Club's Ladies B Doubles Final with a 6-2, 6-3 victory over Susie Oakley and daughter Tara. Guy Lamming and daughter Cressida win the Family Mixed Final. The Bowls Club record three wins, including away at Arundel. Former Graffham residents Ian and Kathryn Callan (who lived at Thereaway, now the White House) receive a letter from the Queen on their 73rd wedding anniversary, followed on VJ Day (the 70th anniversary of the end of World War II) by one from Vladimir Putin together with a medal thanking Ian for his service on the Arctic convoys. Eleven are killed when a Hawker Hunter crashes onto the A27 during the Shoreham Airshow. Deaths of actor George Cole (*Minder*, *St Trinian's* films, aged 90) and singer/TV personality Cilla Black (72).

25 years ago – August 2000: As the search for a new rector (to succeed Keith Hyde-Dunn) continues after two promising candidates withdraw, the Rectory is re-painted, the windows replaced and the garden "rejuvenated". Despite cool, overcast weather Graffham Fête raises £3,500. Anthony Dimmer retains Graffham Tennis Club's Men's Singles title after a "knife edge" final against Ben Major. Anthony and Mike Dimmer defeat John Head and Trevor Challen in the Doubles. Graffham Cricket Club defeat West Sussex Wanderers, Petworth and Graffham Football Club, but lose to Midhurst. The Russian submarine Kursk sinks in the Barents Sea with the loss of all 118 hands. Queen Elizabeth The Queen Mother celebrates her 100th birthday. Deaths of actor Sir Alec Guinness (86, at Midhurst's King Edward VII Hospital) and political broadcaster Sir Robin Day (76).

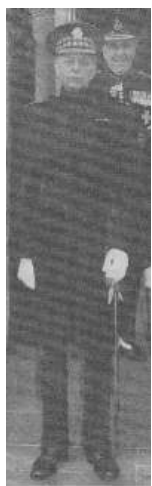
50 years ago – August 1975: At Graffham Fête, the raffle winner on Den Petters's stall receives one of his prize budgerigars, 20 of which are on display. Prince Charles falls off his pony, Argentinian mare Clarita, while playing polo at Ambersham. The National petrol station at Easebourne (Gillham's) attracts customers with an offer of six-fold Green Shield Stamps even if they only buy one gallon. The first stretch of the M27 is opened, between junctions 1 Cadnam and 2 Ower – the final stage, from junction 4 the M3 to junction 7 Hedge End, Botley, is not completed until 1983. The Birmingham Six are sentenced to life imprisonment. With the match delicately poised, the Third Ashes Test at Headingley is abandoned after the pitch is vandalised by campaigners for the release of armed robber George Davis. Release of cult musical movie *The Rocky Horror Picture Show*, and Bruce Springsteen's breakthrough album *Born to Run*. Death of Haile Selassie I, Emperor of Ethiopia (83).

Graffham Chronicles: A man of the shires

With The Woodcote much in the news right now as a decision on its plans to triple in size is imminent, local historian Pauline Goodwin in her regular column this month, focusses on the man who saved The White Horse, as it then was, for the village half a century ago – Jim Godman-Dorington.

The tales of people's lives in our county – be they in one shire or two, a separate west and east or a unified Sussex – continue to captivate attention. There are those who possessed extraordinary knowledge, skills, creativity, vision and those who found ways to serve the community. The character who is our focus this month is from the latter category – a man who served our village, the wider community and the entire county of Sussex, a man whose service was recognised officially when he was made High Sheriff of West Sussex, acknowledging decades of service in local government and community service. This man was James (Jim) Frederick Godman-Dorington (1927-2012).

The office of High Sheriff is a thousand years old – the oldest office under the Crown. The word sheriff comes from the old English shire-reeve. Reeve is an old English word referring to an administrative official holding various roles including a royal officer representing a higher authority like a king or a lord. It is the term used by Chaucer for the title of one of his tales, *The Reeve's Tale*. The actual office has Norman origins and back in those days the sheriffs appointed collected rents, fines and fees from the shires which were owed to the monarch. Today, the High Sheriff focuses on law and order with ceremonial duties, such as escorting judges to their courts. It is also a role which marks community life and service. The office is held for a one-year term. Jim took office in 1986 for 12 months as a reeve.



A rather grainy newspaper photo of Jim in uniform as High Sheriff.

His father was also a Sussex man who spent many years serving in the army. He fought in the Boer War, then served in the Camel Corps and the Egypt Royal Artillery during World War I. In peacetime he served as District Commissioner for Arusha District, now Northern Tanzania – a vast area known for its diverse landscapes and amazing safari opportunities. Sadly, he died a few months after Jim was born, so his mother, May, brought their son up alone.

Jim's life followed a similar pattern. As a child, he lived in

Storrington before doing his National Service in the Army then being commissioned into the Scots Guards. But his love of the land led him quite naturally back to West Sussex in 1951 – to agriculture and to service.

He bought Haylands at Woodcote from Nigel Clavering, plus another 70 acres of neighbouring land and, during the following years, clawed back more land which had previously been part of the farm. Jim farmed Haylands and made it his home with his wife Rosemary and their three sons William, Andrew and James. He had met her in Graffham when playing tennis on what son William describes as “their rather rough tennis court” at her home, Heath Ridge, on Graffham Common Road.

Haylands was to become home for continuing generations of the Godman-Dorington family. The mixed farm – arable crops, pigs, sheep and dairy cattle – also provided a home and work for a good number of villagers. In her memories, Wendy Challen, who lived at Woodcote’s 2 Flint Cottages, remembers Buster Clark, Tim Moreton, first cowman Heinze Shoop, second cowman John Hewlett and



Cows at Haylands a decade or so before Jim bought the Graffham farm in the 1950s.

third cowman John Franks. Wendy’s father, John Challen, worked on the arable side and with the pigs. One of them, a large boar, left his mark on John, slashing his upper thigh with its formidable canine teeth or tusks. John kept the offending tooth as a trophy. Working with animals can have unexpected consequences!

From this agricultural base, Jim became involved within the village, particularly in the provision of food. Sides of Haylands bacon, processed at Horsham, were supplied to Pescod’s Stores, on The Street. Penny, daughter of John Holland, the shop owner, recalls that these sides were delivered still requiring boning, cutting and slicing. Each Wednesday, a joint of gammon was boiled by the Hollands to provide the shop with delicious local Haylands ham.

One of Jim’s most popular acquisitions locally was his purchase of The White

► *Continued on page 46*



Turn your online shopping into FREE donations for Graffham's St Giles Church with easyfundraising



You shop and brands donate towards our fundraising. It won't cost you a penny more.



How to sign up to earn funds for St Giles for free

- ✓ Scan the QR code here (right) or go to bit.ly/stgiles-easyfundraising
- ✓ We're registered at easyfundraising as St Giles Church - Graffham
- ✓ Your favourite brands donate to St Giles whenever you buy online from them - at no extra cost to you!



Download the
easyfundraising App



Excellent 
3,945 reviews on  Trustpilot

Horse and the land around it, when the building itself had fallen into disrepair in the early 1970s. He renovated the pub completely, and it reopened in 1974 with Paul and Maggie Rixon (see page 28) as managers to serve the local community.

His contribution went so much further than this. From my earliest memories, in the mid-1950s, he was a presence in the village, accompanied by his tractor and trailer at all outdoor events, gifting and delivering countless different types of equipment.

At the village fête, his generosity of spirit came to the fore. In the morning, his first call would be to the Pavilion to drop off a churn of Haylands' milk for those preparing the afternoon teas. Then he would unload the hay bales used to surround the stalls and for seating and fetch his small horse box and set up a piglet inside,



Jim gave children rides in his trailer pulled by a mini-tractor at umpteen Graffham fêtes.

with a ramp leading up to it to allow viewing This would be the prize for the bowling competition. His afternoon would be spent driving a mini tractor and trailer around the recreation ground to give children rides. After the events of the day were over, he would reverse the process, taking all equipment back to Haylands. Then he would do it all over again the following year.

Beyond his tangible contributions to village life, Jim's dedication extended to local governance. His leadership and commitment were reflected in three significant roles on local councils, where his voice shaped policies and decisions for the broader community. He served on Graffham Parish Council for 14 years, acting as chairman for many of them. During this time, two huge issues occupied the parish council – the 'Gravel Pit' debacle, over proposals to extract gravel locally, and public access to the Seaford College Drive (*Graffham Parish News*, May 2023). Furthermore, he was district councillor for Graffham on the Midhurst Rural District Council for 11 years, becoming chairman of its Planning Committee. He also represented Graffham, Heyshott and Midhurst as a county councillor, on West Sussex County Council. In addition, he was a Justice of the Peace for 10 years.

Jim Godman-Dorington gave so much to Graffham and to the shire of Sussex. His life was one of service to the community.

Nature Notes: Leaders of the insect axis of evil

A regular column by Sussex naturalist and wildlife guide Michael Blencowe, who can regularly be spotted in and around Graffham.

For centuries, man has waged war on wildlife. Apart from destroying its home, we've systematically killed it for food, fashion or fun. It seems we're winning. There isn't much wildlife left, which isn't surprising as nature really hasn't been retaliating. Sure, you may occasionally get pooped on from above or find a hole in an old jumper but overall the battle has been rather one-sided. Yet within nature there lie certain extremist factions whose sole purpose, it seems, is to make us pay in blood for our crimes. Leading the insect axis of evil are nature's most tenacious terrorists – horseflies.

On hot, calm days, horseflies launch an airborne offensive against us – using some impressive aerial manoeuvres which have been compared to the 'Immelmann Turn' perfected by World War I fighter pilots.

Different species target different parts of the body. Imagine a moustachioed horsefly squadron leader rapping his baton against a map of the human anatomy and co-ordinating the assault: "Tabanus and Atylotus, you fly in low for a bally bite behind the knees. Haemotopata, aim for the wrists. Chrysops – sneak up from the rear and go for the neck."

Of course, vengeance isn't the real motivation for these attacks. In a darkly delicious twist, it turns out that us humans each have a resource that horseflies would like to exploit. Eight pints of it in fact. For their eggs to develop, female



Roger Poat & Partners

Funeral Directors & Monumental Mason Consultants

01730 812094

Duck Lane, Midhurst, West Sussex GU29 9DE

PRIVATE CHAPELS OF REST

PRE PAID & PRE ARRANGED FUNERALS

24 HOUR PROFESSIONAL & PERSONAL SERVICE

LONGSTANDING INDEPENDENT LOCAL FUNERAL DIRECTORS



www.rogerpoat.co.uk

NAFD Member



horseflies require a small snack of mammalian blood. Most horseflies target the hardened hides of horses, deer, cattle and sheep – so thin-skinned Sussex hikers are fast food for the fly.

Whereas mosquitoes silently siphon our sanguine syrup with the precision of a phlebotomist, horseflies perform a tactless transfusion with their stout, dagger-like

stylets. To prevent the blood clotting, she squirts in saliva (it's this alien anticoagulant which causes itching and swelling) and slurps up our body's natural resources. You've been fracked!

It's hard to love a horsefly but look your enemy in the eye and you will see one of nature's most amazing sights, an amazing psychedelic swirl of pixelated patterns – true beauty! But this probably won't endear them to you as you're slapping, swatting and swearing on the South Downs.

This seems to be a good year for the biters and a bad year for the bitten. Horsefly larvae develop in wet conditions and the rainfall of last winter created plenty of perfect habitat. I get bitten yet I find it hard to grumble. I derive so much free pleasure from the natural world (aside from all that water, food and air). Call me a traitor but if the occasional drop of blood is the price I have to pay then I'm happy to donate to their cause. *Viva la resistance!*

- You can find details of Michael's upcoming events, wildlife sightings and adventures or book him for a wildlife survey of your garden or land at:



A horsefly, sitting pretty here on a leaf, requires mammal's blood for its eggs to develop.



michaelblencowe.com

Out and about: A plant Graffham can call its own

A regular column by Jonathan Simons, amateur botanist and font of useless knowledge about things most people prefer to ignore.



You may not thank me for this but following on my article in June's *Graffham Parish News* on the Bird's-nest Orchid, this month I showcase another pale saprophytic plant that Graffham can claim for its own – the Yellow Bird's-nest, *Monotropa hypopitys*. Rather confusing!

It is not an orchid but is quite distinctive once you get your eye in. It grows on decaying vegetable matter in shady places. It has a bunch of pale tubular flowers, appearing in July, at the top of a pale stem with darker brown scales. The spherical seed pods are held erect as the plant matures.

SPECIALISING IN RESTORATION OF TRADITIONAL HERITAGE BUILDINGS

All aspect of roofing and construction
completed

Family run business with over 30 years of
experience

- ✓ Tiling
- ✓ Slating
- ✓ Flat roofs
- ✓ Repair works
- ✓ Chimney works
- ✓ Lead works
- ✓ General Building

CONTACT

✉ info@newheightsroofing.co.uk
☎ 07508 468418




NEW HEIGHTS
ROOFING AND CONSTRUCTION



The Yellow Bird's-nest's pale tubular flowers appear from July (left) with their seed pods held erect as the plant matures.

I first saw one in 1974. As my first wife and I were descending down Glatting Hanger near Sutton I caught sight of this odd-looking object up on the bank. I took the memory home to my flower books and identified it as this *Monotropa*. It was there again in 1975, but I did not see it again anywhere until 2005, a year after I moved to Graffham.

In that year, Jenny and I were walking down to The Three Moles when I spotted it on a bank under oak and hazel at the side of the road between our Millburgh Hall home and Selham House. Remarkably, I took no photos to mark that surprising find, but in subsequent years it cropped up close by in several places up as far as Gallows Hill and finally in 2021 it appeared in our own grounds. I was ecstatic but after that fleeting appearance I have not, at the time of writing, seen any more – anywhere!

Before that, though, I had also found it elsewhere in the Graffham area – by the side of the lane at Hoyle Farm and by the road sign at the entrance to Cathanger Lane. Jenny has her own site. She spotted it from the moving car on a bank near Burton Mill Pond.

I have been back to Glatting Hanger several times and did discover a new group in a spot not far from my original 1974 sighting – we usually check out all these sites once a year. On our 2015 visit, we were returning from the top empty-handed when Jenny, in the rearguard, quietly enquired: “What’s this?”. It was Yellow Bird's-nest in exactly the same spot as I had seen it 50 years and one wife ago.

Graffham Tennis Club



Club tournaments Club tournaments have been making headway throughout June and July. The Men's Doubles was played over one day in late June, with six pairs playing a round robin format in two groups of three. In the first group organiser Andy Craig and his partner Ross Anderson took on David Sparkes and Paul Pieterse as well as Tom Sharman and Peter Tyrie. The second group comprised father and son duos, with Richard and Lawrence Bates, Simon and Theo Longman, and Matthew and Teddy Syed.

The finalists emerged as Andy and Ross plus Matthew and Teddy, the youngest of the junior brigade. The one set match showcased some outstanding tactical matchplay with Teddy standing up heroically to what might have been deemed 'targeting'! Eventually the topspin of Andy and the volleying of Ross proved decisive, and they took the set 6-3. A one year older Teddy could be one to watch!

The final of the Mixed Doubles' tournament took place on 5 July with defending champions Emma Amin and Andy Craig pitched against Angie Thornley and Ollie Edwards. With Ollie heading for Africa in the autumn, it was a good chance to take a Graffham trophy before leaving. Losing the first set 6-3 to Andy and Emma,



Mixed Doubles' finalists (from left)
Emma Amin and Andy Craig with
eventual winners Angie Thornley
and Ollie Edwards.



Men's Doubles' finalists (from left)
Teddy and Matthew Syed with new
champions Andy Craig and Ross
Anderson.

he and Angie polished their tactics over the next set to take it 7-5. Word got out that a terrific final was taking place and the crowd were treated to a final set which progressed to a 4-4 equilibrium. Outstanding net play by Angie combined with Ollie's strength and accuracy in the overheads squeezed out the victory 6-4.

Meanwhile the Ladies' Doubles tournament has been taking place over the summer months with seven pairs contesting a round robin format with each match being the best of three sets. At the time of writing, defending champions Sian Green and Emma Amin are unbeaten, though they have yet to come up against one or two of the other strongest pairs.

Graffham Tennis Club East Hants league results

16 Jun	Drew 4-4	Men's Doubles	Div 4	vs Steep C
17 Jun	Won 8-0	Ladies' Doubles	Div 2	vs Steep B
23 Jun	Won 7-1	Mixed Doubles	Div 2	vs Alton A
25 Jun	Won 8-0	Ladies' Doubles	Div 4	vs Liphook
7 Jul	Won 5-3	Mixed Doubles	Div 2	vs Fernhurst A
8 Jul	Won 8-0	Ladies' Doubles	Div 2	vs Avenue A
9 Jul	Drew 4-4	Ladies' Doubles	Div 4	vs Medstead C
10 Jul	Won 6-2	Men's Doubles	Div 4	vs Fernhurst B

East Hants league Graffham's league teams are all in a strong position, with Kate Hogan's Ladies' A, Richard Bates' Men's, Denise Clay's Ladies' B and Andy Craig's Mixed teams all currently lying at the top of their respective divisions. The fine weather suits us! With the evenings drawing in, Graffham will play most of their fixtures away from home, but here are two to see:

Graffham Tennis Club East Hants League home fixtures: August

All spectators welcome!

5	Tues	6pm	Ladies' Doubles	Div 2	vs Midhurst
7	Thurs	6pm	Men's Doubles	Div 4	vs Steep C

Graffham Tennis Week opened on Friday 18 July

– full report in next month's edition

Graffham Ladies Cricket


Brett Creed's Thursday coaching sessions have continued in glorious sunshine and the growing number of players means that he will have a tricky selection problem when the next fixture arrives. The team did play a 'friendly' evening 16-over

▶ [Continued on page 53](#)

HOOLI.

Design | Marketing | Words | Web

01730 816484

 @hoolidesign

hooli.co.uk | hello@hooli.co.uk

Get in touch with Julia and Rachel

Nº1 West Street, Midhurst

 front.hopefully.desktops

Martin Taylor

*Quality Carpenter, Joiner and
Cabinet Maker*

*Fully fitted and freestanding furniture
a speciality. Cupboards, Wardrobes,
Radiator Covers, Fitted Kitchens.
Design service available.*

Mobile 07704-524252

Email:- martin@martintaylorltdesign.co.uk
www.martintaylorltdesign.co.uk

Water Pipe Repair Services

Allan Marsh

07470 440836

Water pipe repairs
Water pipe renewals
Plumbing repairs
Water leak detection
Lead pipe replacement
Drain repairs
Outside taps fitted
Sinks, baths and toilets
Driveway and footpath repairs



ATHENA
BOOKKEEPING SERVICES

BOOKKEEPING SERVICES

for small business and sole traders

**VAT RETURNS CIS RETURNS
SELF-ASSESSMENT
GENERAL BOOKKEEPING**

Jennifer Sear MICB

Heyshott, Midhurst

T: 07834 765761

E: athenabookkeeping@aol.com



need help with your pc? Clive Way BA^{hons} Computing

The friendly professional service for your
home pc, laptop and other device nightmares.

I am now based in Wales.
But fear not –
I can still help you with
many problems by
remotely accessing your pc,
mac, phone, ipad or other
electronica.



tel: 0791 7766254

email: cliveway@yahoo.com

HELEN'S AIRPORT CARS

"With US it can often cost less than rail or airport parking"

**Saloons
MPVs
Estates
4 - 8 seaters**



**Reliable
Affordable &
Comfortable
Pre-booked
24hr**

01243 820820

Book Online Now www.airporttaxis.co.uk

24 Sudley Road, Bognor Regis. PO21 1ER



► *Continued from page 51*

fixture against a Petworth team with the match followed by drinks and nibbles. The development of the game in Graffham, while not yet up to hard ball standards, meant that it was played in the traditional way, with 'out meaning out' and the teams bowling from both ends. With a brisk breeze blowing in, the playground end was considerably easier to bowl from and even the strongest bowlers struggled uphill and upwind from the north end. Petworth batted first and clocked up a total of 111, with wickets claimed by Angie Thornley, Louise Creed and Matilda Shelton-Agar. Sharp fielding resulted in two run-outs as well.

Graffham's turn to bat saw some tremendous striking by Matilda, who managed five boundaries and was retired at 25 runs. Despite the rest of the team all managing to get on the scoreboard the run rate was not enough to match Petworth's total and Graffham finished on 96.



Graffham and Petworth players line up for a joint team photo after the game.



The road to and car park at the Pavilion is looking smarter than ever after Graffham Recreation Ground Committee arranged for the potholes to be filled and resurfacing to be carried out.

The Rec Committee has also issued a reminder that no cars should be left overnight in the car parks there without prior consent.

NATALIE LOUISE

INTERIOR DESIGN



*PERSONALISED SERVICES
TO CREATE A HOME YOU LOVE*

07590 190016

NATALIELOUISEINTERIORS@GMAIL.COM

WWW.NATALIELOUISEINTERIORS.COM



**Straight Line
Fencing**

With 30+ years' experience, we are the leading fencing and groundwork specialists in West Sussex and Surrey.

Quality workmanship assured, whether you need to keep children or horses in, wildlife out or just want security for your home.

01428 685222

slf@straightlinefencing.co.uk

Norwood Contractors GARDEN MAINTENANCE

Grass and Hedge cutting,
Pruning, weeding,
Planting etc.....

ENQUIRIES:

01798 867 338

Or 07973 370 727



Anna Shawcross
— OSTEOPATHY —

Call Anna 01798 368078

hello@annashawcross.co.uk | 

Caytons Limited

Stuart A Hail
Specialist Oil Fired
Heating Engineer

**Boilers
Agas**

**Servicers
Breakdown
Installation**

Tel 01798 344 213

M 07779 11 33 43

Email: caytonsltd@gmail.com



MOLE CATCHING
"NO MOLE, NO FEE"
WASPS / HORNETS

CONTACT ANGUS ON 07828 134086
WWW.ASCOUNTRYSIDESERVICES.CO.UK

Graffham Parish News' august August quiz

Ten quick fire questions from Bill Barrett to test your local, topical and wider general knowledge. Answers on page 67 (no cheating!)

- 1 The occupants of Ladywell Cottage in the 1921 census, and the leading character in cult US crime drama *Breaking Bad*, share which name?
- 2 When was polo first played in the grounds of the Cowdray estate: [a] 1895, [b] 1910, [c] 1925?
- 3 Stansted Park, visited by Graffham Garden Group last month, was formerly the seat of which Earl: [a] Bessborough, [b] Messborough, [c] Cessborough?
- 4 *Resurgam* (Latin for "I shall rise again") is the only word on the exterior of which London cathedral, which has been rebuilt at least three times?
- 5 The Boeing B-29 Superfortress, flown over Japan by Colonel Paul Tibbetts of the US Air Force on 6 August 1945, was better known as what?
- 6 How are author Sally Walker and her husband Tim (who has the neurological condition corticobasal degeneration) better known?
- 7 Julian Cash and Lloyd Glasspool became the first all-British pair for 89 years to win which major tournament last month?
- 8 St Mirren are the only football club to have sacked which distinguished coach: [a] Alf Ramsey, [b] Sarina Wiegman, [c] Alex Ferguson?
- 9 Grian Chatten is the frontman for which controversial modern punk ensemble: [a] Fontaines DC, [b] Bob Vylan, [c] Kneecap?
- 10 Which film, based on a rock opera by The Who, also featured Elton John and was released in 1975 having been shot in Portsmouth the year previously?



TEDDY TIME in the Pavilion TODDLER GROUP

Wednesdays 10.15-11.30am

Pavilion, Graffham Rec

No charge. All welcome.

Just come along!

Other denominations locally

Methodist: Midhurst. *Minister:* David Muskett *Tel:* 01730 233436. *email:* superintendent@esanddcircuit.org.uk. *Web:* midhurstmethodist.com *Worship:* Sundays 10.00am, and Café Church 1st and 3rd Wednesdays 10.30am.

Roman Catholic: The Catholic Churches of Saints Anthony and George, Duncton, The Divine Motherhood and St Francis of Assisi, Midhurst, and The Sacred Heart, Petworth. *email:* petworth.abdiocese.org.uk. *Tel:* 01798 342169. *Web:* www.petworthcatholic.org

Mass					
Sun	8am	Duncton	Thu	9.30am	Petworth
	9.30am	Midhurst		12noon	Midhurst Convent
	11am	Petworth	Fri	6.30pm	Petworth
Tue	10.30am	Petworth	Sat	9.30am	Midhurst
Wed	9.30am	Midhurst		5.30pm	Petworth

Society of Friends (Quakers): St Anne's Community Centre, St Anne's Hill, Midhurst, GU29 9NN. *Web:* sussexwestquakers.org.uk *Meetings:* 2nd and 4th Sundays 10.30am.

We love our advertisers! Please support them.

W. Bryder & Sons

est. 1863

The Gables
Tillington
GU28 9AB
Tel: 01798 342174

95 Lower Street
Pulborough
RH20 2BP
Tel: 01798 872000

Email: wbryderandsons@hotmail.co.uk

5TH GENERATION LOCAL FAMILY RUN
INDEPENDENT FUNERAL DIRECTORS

24 Hours Service
Private Chapel of Rest
Monumental Stones supplied
Pre-Paid Funeral Plans available
Grave Maintenance service



'SONGS OF PRAISE' IN THE GARDEN

Sunday 31st August 3.30pm -
Occam Cottage, The Street, Graffham

Come and sing some favourite hymns
in the style of 'Songs of Praise'.

If you have a favourite hymn please let us know
what it is, and maybe why you have chosen it, and what
it means to you. We will sing the most popular ones.

All are welcome - whether or not you choose a hymn.
There will be cake too!

Please send hymn choices to Chris Leaver at
goneaway@btinternet.com before 15th August.

Thank you!

Help! Foodbank donations at five-year low

Donations to Petworth's Foodbank are at a five-year low, Petworth Area Churches Together (PACT), which launched the initiative with Chichester Foodbank, has warned. It has issued an appeal for members of the public to help. PACT said: "Donations are always seasonal as we always will get a lot more food through from Christmas to January and then as the weather improves, we tend to get fewer donations – so please help now as the people who rely on our help need it in the summer as well."



You can leave donations at its collection points in All Saints Chapel, directly opposite Graffham Village Shop, or at St Giles Church – or at Petworth's Co-op or Midhurst's Sainsbury or Tesco stores. The items currently in most need include:

- Biscuits and treats.
- Pasta.
- Tin chicken in sauce.
- Cooking oil.
- Ready-made sauces.
- Tin meat/veg meals.
- Deodorant.
- Rice.
- Tinned veg/
- Flour.
- Shampoo, conditioner.
- Toothbrushes.
- Jam, honey, spreads.
- Sugar.
- Toothpaste.
- Ketchup, mayo etc.
- Tea and coffee.

Franciscan friar to preach at St Giles

A Franciscan friar will be guest preacher at St Giles Church's service on Sunday 17 August at 10.30am. Brother John has been a Franciscan friar for 24 years, serving in six different friaries, currently as Guardian (leader) of Hilfield Friary in Dorset, which, as well as being a retreat house, has a particular concern for the care of the environment. Formerly a Baptist minister, he has lived and worked with asylum seekers and refugees in Leeds and Birmingham. His connection with Graffham is via the village's former vicar Steve Gray. They met at Spurgeon's College almost 40 years ago and have been great friends ever since.

Need a helping hand...? Graffham with Woolavington's Parish Priest Discretionary Fund is available to help any parishioner in real financial need. Funded by donations to St Giles, it's already come to the rescue of multiple individuals and families in the village hit by the cost of living crisis. It could be the answer to your prayers. Contact Rev Vivien to find out more.

What's on at our village church and chapel

- All residents and visitors are welcome to all services.
- St Giles Church is at the far south end of Graffham Street, near the Downs.
- All Saints' Chapel is opposite Graffham Village Shop.
- Both St Giles Church and All Saints' Chapel are open daily.
- See stgilesgraffham.org or Facebook's @stgilesgraffham for any changes.

August				
2	Sat	9.30am	Come and Sing	St Giles Church
3	Sun	10.30am	Parish Eucharist Lammas Sunday <i>Reading: Hosea 11.1-11</i>	St Giles Church
5	Tue		No Morning Prayer or Pilgrims	
		7.30pm	Bell ringing practice	St Giles Church
9	Sat	10am	Bell Ringing Practice	St Giles Church
10	Sun	10.30am	Parish Eucharist Trinity 8 <i>Reading: Isaiah 1.1, 10-20</i>	All Saints Church
		6pm	Evensong	All Saints Chapel
12	Tue		No Morning Prayer or Pilgrims	
		7.30pm	Bell Ringing Practice	St Giles Church
		9am	BCP Holy Communion Parish Eucharist	St Giles Church
17	Sun	10.30am	Trinity 9 with Brother John preaching <i>Reading: Isaiah 5.1-7</i>	St Giles Church
19	Tue		No Morning Prayer or Pilgrims	
		7.30pm	Bell Ringing Practice	St Giles Church
24	Sun	10.30am	Parish Eucharist Trinity 10 <i>Reading: Romans 12.9-13 or Jeremiah 1.4-10</i>	St Giles Church
26	Tue		No Morning Prayer or Pilgrims	
		7.30pm	Bell Ringing Practice	St Giles Church
31	Sun	10.30am	Church Family Eucharist Trinity 11 <i>Reading: Jeremiah 2.4-13</i>	St Giles Church
		3pm	Songs of Praise in a garden	Occam Cottage

RINGING and SINGING

To join Graffham's bellringers or occasional choir, contact Rev Vivien on 01798 867199 or at hello@stgilesgraffham.org

What's on in and around the village

For all church events, see page 59. For sports dates, see page 51. For weekly events, see page 63

August				
1	Fri		Deadline for South Downs National Park Authority to decide on Woodcote plan	
		10am-3.30pm	Bignor Sunflower Maze and Pumpkin patch (till 28 Aug)	By Bignor Roman Villa RH20 1PH
		11am-7pm	Qatar Glorious Goodwood racing festival (till 2 Aug)	Goodwood
			Madhurst festival (till 31 August)	Midhurst
2	Sat	9am-2pm	Summer market with Madhurst unplugged	Midhurst
		10am-6pm	Loxwood Joust (also 3 Aug)	Loxwood RH14 0AL
			Lions vs Australia third rugby test	Sydney
			Cowes Week (till 8 Aug)	Isle of Wight
5	Tue	9-11am	Great Feet foot health professional ¹	Empire Hall
9	Sat	10am-6pm	Loxwood Joust (also 10 Aug)	Loxwood RH14 0AL
		Afternoon	Heyshott summer show	Cobden Hall, Heyshott
		8pm	Absolutely Dragulous drag duo	Three Moles
10	Sun	7pm	Folk music night	Three Moles
11	Mon	10.30am	Farm walk (see page 19)	Westerlands
12	Tue		<i>The Glorious Twelfth</i>	
13	Wed		Deadline to complete survey on Sussex local government plans (page 9)	
15	Thu		80 th anniversary of VJ Day	
16	Sat	10am-5pm	Vintage market	Goodwood Kennels
		10am-6pm	Loxwood Joust (also 17 Aug)	Loxwood RH14 0AL
17	Sun		Graffham Fashion Exchange opens (see page 12)	St Giles Church
21	Thu		Graffham Garden Group outing	Woolbeding Gardens
		7-10pm	Petworth Late Chichester Pride LGBTQ+ event	Petworth House
22	Fri		August Bank Holiday Racing (till 24 Aug)	Goodwood
			Women's Rugby World Cup opens (till 27 Sep)	Across England
23	Sat	9am-1pm	Petworth Farmers Market	Petworth
24	Sun	3-11pm	Big Music Bash	Petworth Pk Cricket Club
25	Mon		August Bank Holiday	

25	Mon	From 2pm	Graffham Summer Fête	Rec
26	Tue	9-11am	Great Feet foot health professional ¹	Empire Hall
27	Wed	12.30pm	Lunch Club ²	Empire Hall
28	Thu	10–11am	UKHarvest community food hub	Sylvia Beaufoy, Petworth
30	Sat	10-11am	Community garden work party	War Memorial
		pm	Wedding reception	Empire Hall
		9am-5pm	Summer street party	Midhurst Market Sq
		7pm	Abba tribute night	Goodwood Kennels
31	Sun		Farm walk, BBQ and pop-up shop	Slow Grown Farm
		3.30pm	Songs of Praise in the garden, with tea and cake (see page 57)	Occam Cottage
		7-10pm	Blues Night	Three Moles

September

1	Mon	7pm	Empire Hall AGM	Empire Hall
2	Tue	10.45am	Arts Society Midhurst talk	Methodist Hall, Midhurst
		11.30am-6.30pm	Autumn Racing	Goodwood
		1.15 for 2pm	Arts Society West Sussex talk: <i>The Royal Ballet – in 60 minutes</i>	Fittleworth Village Hall
3	Wed		WSCC and Seaford College terms starts – but Graffham and Duncton Schools and MRC INSET days	
		6.30pm	Graffham Parish Council meeting	Empire Hall
4	Thu		Midhurst Rother College INSET day	
		10–11am	UKHarvest community food hub	Sylvia Beaufoy, Petworth
6	Sat	8pm	OUTDOOR CINEMA The Foresters Arms in conjunction with Graffham Empire Movies presents <i>A Good Year</i>	Foresters Arms
7	Sun	12noon-4pm	Lodsworth Country Fayre	St Peter's, Lodsworth
12	Fri	7am-7pm	Goodwood Revival (till 14 Sep)	Goodwood
14	Sun	7pm	Folk music night	Three Moles
15	Mon	6.15pm	East Lavington Parish Council meeting	Seaford College
16	Tue	9-11am	Great Feet foot health professional ¹	Empire Hall
17	Wed	afternoon	Sip and Paint art afternoon	Foresters
21	Sun	10.30am	Harvest Festival service	St Giles
		1pm	Graffham Garden Group outing	Meadow Farm RH20 1DF
24	Wed	12.30pm	Lunch Club ²	Empire Hall

¹**Great Feet foot health professional:** Available to Graffham Health Support Association members.

²**Graffham Lunch Club** meets on the fourth Wednesday of the month at 12.30pm for 12.45pm for a home cooked two-course meal and coffee, at £10 a head. Please book via Sarah on 01798 867567.



T: 01483 208408
E: office@ghinn.net
www.ghinn.net



For over 50 years Ghinn & Co. have been helping home owners improve and extend their properties throughout Surrey and West Sussex.

Call now for a FREE, professional quotation from the experts.



THE MARTIN SEWELL
BUILDING COMPANY

Your vision,
our expertise.
**Building your dream
home, together**

An Award Winning,
Chartered Building Company

WHY CHOOSE US?

Experienced in delivering a wide range of high quality building projects, from bespoke new builds to the sensitive renovation of listed buildings or extensions and refurbishments for private & commercial premises.

CONTACT

01243 542 056
www.msbc.uk.com
admin@msbc.uk.com



ABOUT US

Having worked in the Sussex area since 1985, our dedicated & highly skilled team are passionate about delivering outstanding results & creating dream homes for our Clients.

MSBC has built a reputation based on an ethos of openness, strong communication and honesty.

AWARDS



INVESTORS IN PEOPLE
We invest in people Gold



Regular weekly activities (for notes, how to book, etc, see below)			
Mondays	8am	Yoga with Kate (fortnightly) ³	Westerlands
	9-10am	Fitflows Fitness ¹	Empire Hall
	Daytime-evening	Osteopath ²	Empire Hall
	6pm in summer	Bowls Club practices – all welcome	Rec
Tuesdays	8.30am	Strength and mobility with Gemma ³	Westerlands
	8.30am-12noon	Post Office	Empire Hall
	Daytime-evening	Osteopath ²	Empire Hall
	7.30pm	Bell ringing practice – newcomers welcome	St Giles
Wednesdays	9-10am	Yoga ⁴	Empire Hall
	10.15-11.30am	Teddy Time toddler group ⁵	Pavilion
	11.15am-12noon	Pilates ⁶	Empire Hall
	1.45-2.45pm	Rusty Racquets adults tennis coaching ⁷	Rec
	7-8.30pm	Badminton ⁸ – all welcome	Empire Hall
	Daytime-evening	Osteopath ²	Empire Hall
Thursdays	Daytime-evening	Osteopath ²	Empire Hall
	10.45-11.45am	Ease Into Exercise ⁹	Empire Hall
	6pm	Ladies cricket training – all welcome	Rec
	6-7.15pm	Yoga ⁴	Empire Hall
Fridays	9-10.15am	Yoga ⁴	Empire Hall
	9am-3pm	Physiotherapy clinic ¹⁰	Empire Hall
	Evenings	Tennis Club evenings	Pavilion
Saturdays	8.30AM	Boxfit with Nina ³	Westerlands
	9-10.15am	Yoga ⁴	Empire Hall
	9.30am	Yoga with Kate ³	Westerlands
	9am-3pm	Physiotherapy clinic ¹⁰	Empire Hall
Sundays	5pm	Pickleball ¹¹	Empire Hall
	5pm	Casual football ¹²	Rec

Empire Hall: For booking and contact details, see Directory, inside back cover.

¹**Fitflows Fitness:** Contact Susie Bush 07870 219956.

²**Osteopath:** Bookings required. To make an appointment, for daytime or early evening, contact Anna Shawcross on 01798 867523 or see www.annashawcross.co.uk

³**For all Westerlands events:** Book online at www.westerlands.com/experiences/wild-fit

⁴**Yoga:** Deborah Albon on 07790 367009.

⁵**Teddy Time:** No charge. All welcome. Just come along.

⁶**Pilates:** Contact Nicky Capes on 07990 517858 or 01730 812297.

⁷**Rusty Racquets:** Contact Richard Hopp at richard@hoppcoraching.co.uk, on 07904 069457.

⁸**Badminton:** Contact Christina Federowicz on 07900 055574. All welcome.

⁹**Ease Into Exercise:** Contact Susie Bush 07870 219956.

¹⁰**Physiotherapy:** Contact Serena Cooper on 07884 445983 or at serenacooper.physiotherapy@outlook.com.

¹¹**Pickleball:** Contact Beanie Bradley on 07500 080417.

¹²**Casual Football:** Contact Lucas Thornley on 07767 721997.

ROGER GUNN
GARDEN MACHINERY
SHOWROOM AND WORKSHOP



Fast Friendly Service
Competitive Prices
Collection & Delivery
Available



www.rogergunn.co.uk

Telephone 01243 786003

or 07979 752242

located between Lavant and West Dean

**Southern Counties
Tree Services**

Skilled Surgery in all aspects of Tree Care

*Hedge trimming

*Landscaping

*Tree reduction

*Logs supplied

Tel: 01243 814854

Mob: 07774 012961

barneslogs@gmail.com

CLEAR ALL
PEST CONTROL

Fully qualified professional country
services

Specializing in Hornets, Wasps, Moles,
Rats, Mice & Flies/Cluster Flies
www.clearallpestcontrol.com

Phone Dean on:

07768 986 338



Southdowns Chiropractic

Jemma Langford DC Patrick Thomas DC

Treating all musculoskeletal conditions
related to the spine, along with hips, knees,
shoulders and many soft tissue injuries.

We also offer a range of other treatments:
Foot Health, Toe Nails Cut, Massage, Reiki,
Ear Wax Removal, Hearing Test,
Acupuncture, Reflexology

01798 345145

The Old Bakery Golden Square Petworth GU28 0AP
Registered with BUPA & all major Health Insurers



Dismantling and felling
Crown thinning and reducing
Removal of deadwood Pruning
Hedge cutting Stump grinding

Full public liability

Certified arborist

Free estimates and advice



brushwoodtreeservices@gmail.com

07763 844422



CHRIS NEVILLE PLUMBER

- All types of plumbing work carried out.
- Fast, reliable, friendly.
- Fully qualified and insured.

07772 040005

Paula's Cleaning Services

Call for Quotation! 07563 722849

House Cleaning, Office Cleaning,
Deep Cleans and everything in
between!



ClearSkies Travel Insurance

- No upper age limit
- Medical condition specialists
- Waiting list cover
- Cruise cover option
- Single trip, multi trip, backpacker

01428 772 722

clearskiestravelinsurance.com/intro/graffham



FORESTERS GETAWAY
Cosy Country Cottages

B&B ♥ Holiday rental
Graffham village
5* Livery
07768 697427



- Puppy Training
- Dog Agility
- Pet Gun Dog Classes
- 1-2-1 Sessions

Dogs Doing Better

Kilsham Farm, Petworth GU28 0LJ

www.dogsdoingbetter.com

Call Liz 07702 009272

Or email:

dogsdoingbetter@gmail.com



- ✦ Fully insured
- ✦ Dustless sanding
- ✦ Free quotes
- ✦ Interior and exterior

07912 680750


PESCADORAS
 PRIVATE HIRE

Graffham Based Taxi Service

PRE-BOOKED LONG DISTANCE JOURNEYS




• PLEASE CALL, TEXT OR EMAIL FOR A QUOTE.
 • 24 HOUR SERVICE AVAILABLE BY PRIOR ARRANGEMENT.

☎ **07467 521 760**
 pescadorashire.co.uk
 pescadorasprivatehire@gmail.com


PRISM
 WINDOW CLEANING

Prompt and Friendly
 Telephone Fran or Dean on
07768 986 338
 Based in Lickfold
 Est. 1990
prismwindowcleaningltd.com



Success
 No greater gift

Maths tutoring
 11+, 13+, Scholarship, GCSE, A Level, IB, Pre-U
www.escry.com
simon.mitchell@escry.com 07850 125 519

CARPET & RUG DRY CLEANING
UPHOLSTERY & CURTAIN CLEANING
STAIN PROTECTION

TEL: 01730 814 965
www.magnadrysouthern.co.uk


 MAGNA DRY SOUTHERN

Free Estimates ~ Fully Insured

engineering  **architecture Ltd**



Architect
 -
 Structural Engineer
 -
 Builder

All buildings including
 historic and listed

We would be delighted
 to help you achieve your
 dream design




t: 01428 741671 mail@engarc.co.uk
 m: 07734 703777 www.engarc.co.uk

SUSSEX LAND WORKS

Ground Work, Driveways, Patios, Paving,
 Drainage, Concreting, Tarmacing,
 Water Pipe Repairs and Installation
 and more

info@sussexlandworks.co.uk
 01730 814751 07950 035997

www.sussexlandworks.co.uk

Quiz answers (from page 55) 1 Walter White (father and son living in Ladywell Cottage in 1921 shared the same name). 2 [b] 1910. 3 [a] Bessborough. 4 St Paul's. 5 Enola Gay (his mother's names). 6 Raynor Winn and Moth (*The Salt Path, The Wild Silence, Landlines*). 7 Wimbledon Men's Doubles. 8 [c] Alex Ferguson. 9 [a] Fontaines DC. 10 Tommy.

Timberscapes

From a family of skilled craftsmen and gardeners

We cover all aspects of hard landscaping and carpentry

- Outdoor structures, home offices, barn renovations, pergolas and more
- Timber retaining walls and raised beds
- Groundworks – from drainage to levelling
- Fencing – domestic and agricultural
- Patio and drive installations

*From design to build,
Timberscapes has you covered.*

07913 118780

greg@timberscapes.co.uk



A Touch Of Class

BEAUTY AND MASSAGE

Based in Graffham

- Environ Facials
- Waxing
- Pedicures
- Eyebrow/Eyelash Tinting
- Reflexology
- Swedish, Sports, Deep Tissue, Aroma-Relax, Cranial Massage

**Authorised and trusted reseller of
Environ skincare products**

Contact Janine

07908 737783



Matt Wheatley Local electrician

Part P approved contractor

Fully insured

**For prompt and friendly
service, please call**

07976 465974

or email

mattwheatley1971@btinternet.com



SERENA COOPER

PHYSIOTHERAPY

SPECIALIST MSK PHYSIOTHERAPIST
MSC, HCPC, MCSP

**Friday Physiotherapy Clinic
Graffham**

Low back pain/sciatica

Neck pain

Joint pain

Muscular aches and strains

Sporting/ligament injuries

Chronic pain

Home visits available

For more information please get in touch on:

0788 44 45983

serenacooper.physiotherapy@outlook.com

Directory: Useful local contact info

DOCTORS		Petworth Surgery	01798 342248
		Midhurst Riverbank Medical Centre	01730 812121
		Haslemere Minor Injuries Unit	01483 782334
DEFIBRILLATORS	On outside wall of Empire Hall		Code is C240Z
	On outside wall of Pavilion		Code is C159X
	In phone box outside Pescods		Code is also C159X
	In phone box opposite The Three Moles		No code needed
FLOOD ALERT for Lods Bridge		To check river level	bit.ly/lodsbridge
POLICE	In emergency		999
	Non-emergency	101@sussex.pnn.police.uk	101
BURST WATER MAINS		Southern Water	0800 820 999
POWER CUTS		Scottish & Southern Electric	105 or 0800 0727 282
99 FLEX BUS	Linking Graffham with Chichester, Petworth etc		Book via Ring Pingo app 01243 858854
All Saints Chapel Trust	Chairman	Clive Rowntree	01798 867536
Badminton	Christina Federowicz		07900 055574
Bees / Swarms	Wisboro' Green	Tom Moore	07984 606214/01798 343470
	B'keepers		
	Local beekeeper	Murray West	evenings 01798 867048
Chichester District Council			01243 534734
District Councillor	John Cross	jcross@chichester.gov.uk	07592 307027
Dog Warden		Office hours	01243 534734
		Emergency	01243 785339
Citizens Advice Bureau			03448 487969
East Lavington Parish Council	Chairman	Simon Longman	simon.longman@eastlavington-pc.uk
	Clerk	Amy Harte	07889 979820 eastlavingtonpc@gmail.com
Empire Hall		empirehall.org.uk	empirehall@gmail.com
	Chairman and Bookings	Sally Blunt	bookings.empirehall@gmail.com
	Treasurer	Carole Sargent	01798 344790
	Maintenance	Gillian Charlesworth	empirehall@gmail.com
Foodbank	info@chichester.foodbank.org.uk		01243 773687
Foresters Arms	forestersarms-pub.co.uk		01798 867386
Graffham Archive	Robin Brind	graffhamarchive@outlook.com	01798 867619
Graffham Bellringers	Tower Captain	Howard Pescott	01798 867029
Graffham Bowls Club	Chairman	Sheila Allen	01798 342869
	Secretary	Liz Pegram	01798 867770
Graffham Down Trust	Chairman	Jim Kirke	01798 867026
Graffham Garden Group	Carole Kirke		01798 867026
Graff'm Health Support Assc	Chairman	Sarah Lydiard-Wilson	01798 867567
	Membership	Tracy Rowe	07881 698993
	Transport		07391 802541
	Prescription collection	Mary Taylor	mkt.bythedowns@gmail.com
	Loan of equipment	Karin Skanberg	07920 091014

Graffham Lunch Club		Sarah Lydiard-Wilson	01798 867567
Graffham Nursery		School Office	01798 867324
Graffham Parish Council	Chairman	Gillian Charlesworth	gillian.charlesworth@grafttham-pc.uk
	Clerk	Caroline Davison	clerk@grafttham-pc.uk
Graffham Parish News	Editorial and circulation: editor.graftthamparishnews@gmail.com		
	Advertising: ads.graftthamparishnews@gmail.com		
	See also inside front cover		
Graffham with Woolavington Parochial Church Council		stgilesgrafttham.org	
	Priest-in-Charge	Rev Vivien Turner	01798 867199
			hallo@stgilesgrafttham.org
	Churchwardens	Ginny Barrett	01798 867113
		Cindy Bradley	07787 516522
	Treasurer	Dinah Lamming	graftthampcctreasurer@gmail.com
Graffham Rec Committee	Chairman	John Bracey	01798 867760
	Bookings Sec	Sonya Gillespie	graftthamrecpavilion@gmail.com
Graffham Tennis Club	Chairman	Simon Longman	01798 867317
	Membership	David Sanders	07590 117595
	Coaching	Emma Amin	01798 867063
Graffham Village Shop		Jeeva and Vasu	01798 867700
			graftthamvillageshop.co.uk
Graffham Village Shop Assoc	Chairman	Steve Dover	07770 499223
	Treasurer	Andy Jones	andy.jones@grafttham.net
	Secretary	Ros Britton	rosalind.britton@btinternet.com
Katherine Maud Guillod Fund	c/o Graffham PC Clerk		graftthampc@gmx.co.uk
Lavington Estate	info@lavingtonstud.co.uk		01798 867275
Lavington Park Federation	graftthamanddunton.w-sussex.sch.uk		
	Graffham CE Infant School		01798 867324
	Dunton CE Junior School		01798 342402
	Friends of Graffham & Dunton Schools		01798 867324
Long Bostle Downland Soc		Gillian Brandt	01798 867276
MP Arundel & South Downs		Andrew Griffith	andrew.griffith.mp@parliament.uk
Midhurst & Petworth Observer			01243 534163
National Trust (Lavington Common)			01730 816638
Neighbourhood Watch		Michael Crickmay	01798 867486
Osteopath		Anna Shawcross	01798 867523
Oil Buying Syndicate		Derek Bradnum	derekbradnum@gmail.com
Pilates at Empire Hall		Nicky Capes	07990 517858
Potholes	To report a pothole or other road problem online		bit.ly/report-potholes-west-sussex
Seaford College			01798 867392
Three Moles		Ollie and Tom	thethreemoles.com
Thursday Club	Secretary	Diane Bellis	01798 867444
West Sussex County Council		General enquiries	01243 777100
	County Councillor	Tom Richardson	07463 785039
The Woodcote (formerly White Horse)		thewoodcote.com	01798 867331
Yoga at Empire Hall		Deborah Albon	07790 367009



JACKSON-STOPS

PROPERTY EXPERTS SINCE 1910



“Seems like it was only five minutes ago this place felt as spacious as a palace.”

Downsizing, Upsizing, Extending?

If you are considering the sale of your property or need good advice, we would love to hear from you.

**Please get in touch with our team in
Midhurst to find out more**

01730 812357 midhurst@jackson-stops.co.uk
Market Square, Midhurst, West Sussex, GU29 9NJ