

GRAFFHAM

PARISH
NEWS

ISSUE 420

FREE

FEBRUARY 2026



A dusting of snow as the big chill sets in
Graffham and East Lavington could merge by May
2 February deadline for final Woodcote comments



Graffham Parish News is published and distributed free each month to every household in Graffham and East Lavington by the Parish of Graffham with Woolavington.



March 2026 edition deadline 14 February.

Archives and online This edition and back copies can be viewed online at bit.ly/GPNOnline

Find us on Facebook We're on social media too! [@graffham.parish.news](https://www.facebook.com/graffham.parish.news)



Subscriptions If you live outside the parish, you can receive copies by mail. Annual subscriptions are £40. Contact the editors for full details.

Advertising We love our advertisers! If you are interested in being one of them, please contact Philippa Sanders (below) or email ads.graffhamparishnews@gmail.com

Please support us If you enjoy reading this magazine, then please make a contribution through a monthly or one-off online donation – just point your camera phone at this QR code or go to bit.ly/GPN-donation



On the cover: Graffham woke to a light dusting of snow on the morning of Monday 5 January. Thanks to © Rachel Sargent-Pryer for posting on Facebook's Beautiful Sights In And Around Graffham page this picture of her dog enjoying an icy Lavington walk. More photos on page 17.

Contributions and contacts The editors are always pleased to hear from you at editor.graffhamparishnews@gmail.com

- Michael Blunt (right) 07711 997487
- Bill Barrett (left) 07443 501091
- Philippa Sanders 07853 921825



Copyright All content is © *Graffham Parish News* unless otherwise stated and may not be reproduced without the editor's written consent.

Printed by TCW Solutions, 10 Nepicar Park, London Road, Wrotham, Kent TN15 7AF.



Member Editor 2026 Award Winner 2022
Association for Church Editors

Writing from the Rectory: The Welcoming Arms

Ash Wednesday falls on 18 February this year. After New Year's Day and its resolutions, this is the next date when people like to think of ways of improving their pattern of life, in a less selfish, kinder or spiritually creative direction.

I've given some thought to this myself, inspired by my Continuing Ministry Development Review conducted late last year by the new Archdeacon of Chichester. Clergy undergo these appraisals every three years, to consider what has been happening in their parishes and the direction they might helpfully take in the future. Some parishioners are invited to send in a comment on their clergy to assist this process. One of them here suggested I spend more time relaxing in the pub!

Is this a legitimate intention for Lenten observance, I ask myself? Well, it might be. There was a time in much earlier life when pubs were a familiar setting for me, when I was working as a barmaid in my student days at pubs in Surrey, like Woodmansterne's Woodman, Hampton Wick's White Hart and Kingston's Norbiton. Life took a different direction, and church has been my most familiar environment for many years now. For lots of people, it's the other way round, and church is the stranger place to find themselves in. So, there may be something to be said for

► *Continued on next page*



The Foresters Arms keeps this special decanter for the Rev Vivien's visits.



Priest in charge: Reverend Vivien Turner
hello@stgilesgraffham.org 01798 867199

Vivien's rest days are Fridays and Saturdays (apart from for weddings and other special events).

Churchwardens: Ginny Barrett 01798 867113
Cindy Bradley 07787 516522

Safeguarding Officer: Howard Pescott
01798 867029 safeguardinggraffham@gmail.com



stgilesgraffham.org



[@stgilesgraffham](https://www.facebook.com/stgilesgraffham)

► *Continued from previous page*

Rev Vivien relaxing in the pub now and again as suggested and blurring the boundaries of these two very different welcoming social environments. Who knows, other people may decide to observe Lent by saying hello to a vicar, and I'd like to make it as easy as possible for you. And if quiet, I quite like the idea of cosying up in a corner of the local pub with my Lenten reading.

How about you? Ahead of Lent could be a good time to undertake your own personal development review. It may lead to a creative idea of how to spend Lent in such a way as to stretch your boundaries and feel better in yourself for having done so – give up something you know is not good for you or others or take up something you know would be good for yourself and others. (Including 'others' in your thinking is quite important in both cases).

If other ideas elude you, spending more time in the church could be worth a try. The bigger the challenge this may be for you, the greater the potential reward. And I'll be there to welcome with open arms. Unless I'm in the pub, of course!

Every blessing!

Vivien

Reverend Vivien



Welcome, William! William Woolton was baptised at St Giles on 7 December. His parents Harrie, who is holding him here as the Rev Vivien conducts the ceremony, and James live in South London but visit Graffham regularly and were married at the church here in December 2022. They kindly treated the congregation to champagne after the service to celebrate William's special landmark in St Giles.



Christmas past The festive season may seem a long way behind us already, but two big Christmas events in Graffham took place after our January edition went to press and it would not be right to omit them from our pages – communal carolling at The Foresters (above), which raised some £650 for St Giles, and the Christmas Eve Crib Service at the church, both of which were packed with villagers and visitors.





Hold the front pages! Here are some of the 50 issues produced by your current...

Welcome to your editors' 50th edition!

This is the 50th edition of *Graffham Parish News* produced by the current editorial team. In our first issue, published fresh out of the Covid pandemic in January 2022, we set out our aims: “To maintain the high standards of our predecessors with magazines produced on time to the best possible quality with all the content that you, our dear readers, want and need to know”. While there is, of course, always room for improvement, we hope you think we have been delivering on that.

Since our debut edition, with Jeeva and Vasu pictured on the front cover after he'd been presented with his BEM medal, we've endeavoured to report and reflect on everything of significance happening hereabouts. And there's been an awful lot of it! So much so that we've increased the size of the magazine from a standard 48 pages a month to up to a maximum of 76. Each edition includes an average of around 14,000 words. So that's some 700,000 in total across those 50 issues – the same number as contained in King James' version of The Bible.

Among the highlights recorded have been this magazine's 400th edition, the 150th anniversaries of St Giles' rebuilding and the opening of The Three Moles, the



...editorial team since we took the reins in 2022. Which of them was your favourite?

Queen's Diamond Jubilee and King Charles' coronation and changes in stewardship of some of the neighbourhood's most prominent properties – the Lavington Estate and Stud, Nonnington Farm, The Woodcote and the Foresters Arms... We've charted the rebuilding of our Play Park, the bid to merge Graffham and East Lavington Parish Councils and to lower the speed limit within the village, and celebrated multiple weddings, golden and diamond anniversaries and births and, sadly, waved goodbye to some much missed former neighbours.

We've changed printer, with Paul Emberson taking on the task as his contribution to the community he joined a little more than a year ago. We've added new advertisers, too, and welcomed a few new regular contributors and some new faces to the band of volunteers who pop each copy through your letterboxes come rain or shine each month. We've also printed dozens of letters from you, our readers. Keep them coming – we love to hear what you think of the magazine and what's catching your attention in the village.

Happy reading – and here's to the next 50 editions!

Michael

Philippa

Bill

Graffham and Lavington could merge by May

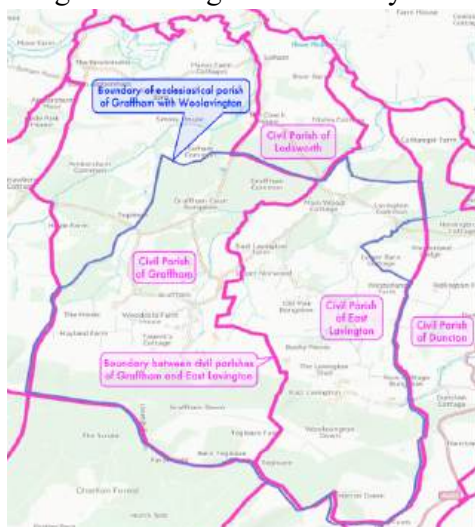
Graffham and East Lavington Parish Councils could merge as early as this May after the former broadly accepted three key requirements put forward by its neighbour for the proposed combination of the two bodies to proceed.

After extensive consultation with residents and long discussion at its own meetings, East Lavington Parish Council (ELPC) agreed unanimously at its November 2025 session to pursue combining with Graffham subject to the two developing a framework for the resulting combined body that would suitably represent the interests of both sets of residents.

At its first meeting of 2026, on 19 January, ELPC set out its needs under any such framework as:

- Preserving East Lavington's identity.
- Guaranteeing future representation for its parishioners on the combined entity.
- Including East Lavington in a unified three-year plan.

To maintain its identity, East Lavington is proposing that the name of the combined body should be Graffham and East Lavington Parish Council. It also wants the unified entity to have a ward structure, as many other local parish councils that have merged with neighbours already have. This would provide for separate wards for



East Lavington and Graffham with each electing a specific number of councillors, aligned to the number of electors in each ward. Graffham has 418 registered electors now and East Lavington 161.

Graffham Parish Council, which had already voted in favour of the merger, quickly responded saying it would back these conditions.

The two parish councils are now jointly seeking approval to proceed with merging from Chichester District Council, which has the final say on such matters. This could be a quick process, district councillor John Cross told the ELPC meeting, potentially enabling them to combine as early as this May.

The boundary between today's separate civil parishes of Graffham and East Lavington could disappear from May after their agreement to merge.

Application to be lodged soon to cut speed limit

Graffham Parish Council aims to apply to West Sussex County Council (WSCC) in the next few weeks to have the current 30mph speed limit within the village cut to 20mph. Its submission of a Traffic Regulation Order (TRO) application will follow extensive consultation across the community in the past year showing overwhelming support for the move.

WSCC says it can take around a year for a TRO application to be implemented. It will first assess the application against its established policies. If it supports the proposal, further feasibility and design work may be needed and it would then be subject to a three-week statutory consultation, with notices in the local paper and displayed in the village. WSCC points out that an application may be implemented in full, in part or declined in the light of objections or representations.

As part of its new village plan, besides reducing the current speed limit within the village, Graffham Parish Council proposes to introduce 'gateways' with appropriate signage at the entrance to the village and to work with neighbouring parish councils to have the limit on roads between them and the A285, A286 and A272 to the east, west and north cut to 40mph, discouraging motorists from using these lanes as rat runs and making them safer for walkers, horse-riders and cyclists.



Lavington precept to rise, Graffham's frozen, but...

Both Graffham and East Lavington Parish Councils have set their precepts – the portion of council tax they receive – for the financial year ahead.

Graffham Parish Council decided at its 7 January meeting to freeze its budget at the current year's level of £19,200 to fund it in delivering projects agreed as part of its Village Plan (see page 9). It will also make a small contribution to council reserves, which have been reduced in recent years. Changes in the way the precept is calculated for each household will, however, result in a 4.4 per cent increase for Graffham's 229 householders, with a typical Band D property contributing £53.93 in the financial year starting in April, up from £51.65.

East Lavington Parish Council agreed at its last meeting of 2025 to increase its budget by 6.25 per cent to £4,250, up £250, because of higher website costs. As for Graffham, changes in the way the precept is calculated for each property, will

▶ [Continued on next page](#)

► *Continued from previous page*

result in a sharper rise once that is passed on to its 87 property holders. For a typical Band D home, it will mean an 11.5 per cent increase, up from £28.59 for the current year to £31.88 from April. Both precepts are substantially lower than the average for the near 70 parish councils across Chichester district.

New email address for Graffham councillors

Graffham parish councillors all now have new email addresses, in line with its new website – graffham-pc.gov.uk – launched in November. Both have the gov.uk designator preferred for national and local government bodies as the final segment of their addresses. Their new emails are:

- Chairman Gillian Charlesworth – gcharlesworth@graffham-pc.gov.uk
- Deputy Chairman John Bracey – jbracey@graffham-pc.gov.uk
- Planning Committee Chair Fiona Jacob – fjacob@graffham-pc.gov.uk
- Councillor Rachel Gerrett – rgerrett@graffham-pc.gov.uk
- Councillor Colin Barker – cbarker@graffham-pc.gov.uk
- Clerk Amy Harte – clerk@graffham-pc.gov.uk

Search continues for allotment land

Graffham Parish Council is still appealing to landowners in the village to see if any of them would be prepared to give or lease space to be used as allotments. With more than six parishioners asking the council to provide them, it is obliged to investigate the feasibility of making them available. Chairman Gillian Charlesworth said: “As the parish council owns no land itself, the only way we might be able to make such a provision would be if someone was able to make an appropriate plot available on suitable terms.” If you might be able to help, please contact clerk@graffham-pc.gov.uk

30 room hotel to open in Heyshott in May

A new private members’ club and hotel will open in May 2026 just a few miles from Graffham. Long Lane will offer 30 bedrooms, a wellness hub and the world’s first “precision nutrition” restaurant among its facilities at the restored Grade-II listed 19th century Dunford House, Heyshott. It aims to be the first “sober” club in the UK, with no alcohol offered. Locals will be able to use its restaurant and gym. The building, set in a 55 acre estate, was originally the home of Victorian politician Sir Richard Cobden but has served more recently as a conference centre.

Graffham Village Plan for 2026-29 signed off

Graffham's new Village Plan, setting out Graffham Parish Council's aims and priorities for 2026-2029, has now been finalised, following extensive consultation with residents and village bodies.

This final version features revisions to the draft published in October, reflecting feedback received. Chairman Gillian Charlesworth said: "Most of the comments we received, from half a dozen parishioners, indicated that there is general support for us having a plan. The biggest issue raised was how the parish council collaborates with other village organisations. The key point to stress is that we are not trying to take over everything – but only suggesting that there may be scope for making things simpler for all by exploring potential areas for working together on things like admin. We've revised the plan to make that clearer."



The plan covers seven areas the parish council intends to work on – issues that are most regularly raised in the village:

- Traffic volume and speed., including the aim of having the current 30 mph in the village cut to 20 mph, the installation of aesthetically appropriate 'gateways' at each of the three road entrances to the village to highlight to motorists the speed restriction and working with neighbouring parishes to have all roads running between them designated as 'Quiet Lanes'.
- Management of village assets for long-term viability, by working with other bodies to look after resources like the Rec, Pavilion, Play Park and Empire Hall.
- Village amenity – working with land owners and other local authorities to ensure roads and other rights of way are kept safe and clear.
- Local environmental issues, in particular investigating the feasibility of providing allotments, creating a village resilience plan and pressing the relevant authorities to ensure local oil drilling sites are safe.
- Local government reorganisation, including the proposed merge with neighbouring East Lavington Parish Council – and noting the three-year plan would need to be revised to reflect the expanded civil parish when the merger takes place.
- Local crime, inviting Sussex Police to advise on crime prevention.
- Community engagement, with the roll out of the new website for Graffham.

You can read the plan in full at graffham-pc.gov.uk/page/council-wide-plans

Waste food to be collected from homes soon

Homes in Graffham and across the Chichester district will start receiving weekly food waste collections from this spring. Each property will be given a silver-coloured caddy – about the same size as a toaster – to keep in their kitchen, along with a one-off roll of compostable liners to get you started, and a grey-coloured outdoor bin with an orange lid, about the same size as a pair of wellington boots.

You will be able to use them to recycle all food waste that you don't want to



compost yourself – meat (including bones), fish and shellfish, cheese and yoghurt, cooked or uncooked vegetables, including peelings, inedible materials like fruit skins or egg shells, bread, cakes and pastries, rice, pasta and beans, plate scrapings, mouldy and out of date food, pet food, tea bags or coffee grounds and solid fats. The

council's recycling team will collect your food waste bin every week – although its recycling and rubbish collections will remain as at present, on alternate weeks.

Chichester District Council is rolling out this new service on a phased basis at the direction of the Westminster government. The council has allocated more than £1.2 million to cover its cost.

Cookery book raises £4,100 for St Giles



The Graffham recipe book's front cover.

The Graffham Village Cookery Book, published in November to mark the 150th anniversary of St Giles' rebuilding, has raised £4,100 for the church, with all 410 copies now sold. *Food For Thought – From Graffham Village* comprised 132 pages containing 195 individual recipes – all submitted by a total of 94 members of the Graffham community. Fiona Mackie, who led the team behind it, said: "Thank you so much to everyone who contributed such wonderful recipes and to all those who very kindly bought copies."

- The Foresters Arms will be including a selection of recipes from the book in its February menu.

South Downs aims to expand its darkest skies

South Downs National Park Authority (SDNPA) holds its annual Dark Skies Festival from 12 to 22 February with stargazing events in Amberley, Bignor, Cocking, Midhurst, Petworth, Pulborough and further afield – marking a decade since it was designated as just one of 25 International Dark Sky Reserves globally.

The SDNPA is setting a new target to expand its current dark sky core of its International Dark Sky Reserve – the very darkest areas, which include Graffham – by 10 per cent by 2031.

Siôn McGeever, SDNPA Chief Executive, said: “Dark, starry skies are such an integral part of what makes the South Downs so special. We have big ambitions for nature recovery across the region and that can only be achieved by having skies with low levels of light pollution as so many animals and plants rely on the darkness.”



For details of what's on in its Dark Skies Festival, see southdowns.gov.uk



Park's top snaps Pictures taken within just a few miles of Graffham have won a photo competition organised by the South Downs National Park Authority to mark the 15th anniversary of its founding. From the 500 images submitted, the judges picked a shot of an orange tip butterfly (left), taken by Thomas Moore in his Slindon garden, as best in the wildlife section, and a misty image of London Plane trees near Midhurst, taken by Richard Murray of Waterlooville, as top in the landscape class.

Subjects for summer show photo contest finalised

The classes for the photographic section of Graffham Garden Group's 2026 summer flower and produce show have now been finalised – so bear these in mind when you are out and about with your camera or smartphone in the coming months. The show takes place in the Empire Hall as ever, on Saturday 11 July, and the subjects for your photos will be: **1** Colourful and Outrageous; **2** Building/Architecture; **3** Animal Portrait, **4** Local Scene.



Architects' drawings comparing The Woodcote's current frontage (left) with how it would look under its latest plans, put forward in January (right).

2 February cut off for latest Woodcote proposal

Revised documents filed by The Woodcote in its bid for approval of its expansion proposals were posted on the South Downs National Park Authority's (SDNPA) planning portal on Monday 12 January – including updated design and access, transport and ecological impact statements and outdoor lighting and biodiversity gain assessments.

You can see them and provide your comments at planningpublicaccess.southdowns.gov.uk and then search for Woodcote. They follow the 28 revised documents posted in November (*Graffham Parish News* January 2026), modifying the original plans unveiled last summer. The SDNPA,

which will rule on the application as the planning authority for the area, is now giving 2 February as the end date for its public consultation period on this latest paperwork.

The next meeting of its planning committee is on Thursday 12 February at 10am at the South Downs Centre Hall at Midhurst. Whether The Woodcote application will be considered then will not be known until the meeting agenda is posted Thursday 5 February. The public can attend and speak, and the meeting will be webcast live and on demand for six months afterwards on the SDNPA YouTube channel.

The architects describe the revised proposals as the “final design for

Graffham Parish Council's Planning Committee will meet on Wednesday 4 February at 6.30pm in the Rec Pavilion to consider The Woodcote's revised application along with new applications for Coach House Cottage and Marsh Cottage. As usual, there will be an opportunity for members of the public to give their opinions which the committee will take into account in reaching its own view. Graffham Parish Council is not the decision-making body for planning applications but is consulted by the planning authority on applications within the parish. The agenda will be published in the week before the meeting at graffham-pc.gov.uk



Architects' outlines showing how The Woodcote would look from the east under its revised plans (above), compared with its elevations today (below).



The Woodcote, developed directly from (SDNPA) officer feedback". They have also aimed to address the 100 plus objections raised against the original proposal last summer, including from scores of villagers.

As before, the owners want to demolish the current six guest suites where former farm outbuildings once stood and erect 16 replacements in new lodges in the field further to the south. The current main building would become a bar and bistro with staff accommodation upstairs. A new structure to be built in the meadow to its south western side would form the replacement restaurant – which would be aiming for coveted Michelin Green Star credentials.

These two buildings and new private dining rooms would be linked by a single-storey block, featuring more pitched roofs than originally envisaged, containing a new bar, kitchen and other support facilities, with a footprint of around five times that of the former pub building. The restaurant and bistro would each offer seats for 40 customers (so, 80 together), with the private dining space taking up to 16. The Woodcote at present sits a total of 30.

The car park, in the current position with an overflow area in the field to the west, would have space for 65 vehicles, up from the current 40, which the analysis projects would “comfortably” cover all potential needs, including a generous contingency. Nineteen spaces would have electric vehicle charging provision.

The transport assessment indicates that the rooms, restaurant and bistro should generate 394 car movements by customers on a Saturday or Sunday, against the 478 vehicles in total that currently use Woodcote Lane on a typical weekend day, including those visiting The Woodcote at present. With a peak of just more than 50 movements an hour, this, it says, can easily be accommodated on the local highway network.

The architects recognise that the final design is “larger than the existing built form”

▶ *Continued on next page*

► *Continued from previous page*

but point out that it has been revised so the original pub building remains the primary and prominent building with the new buildings set behind in a “loose farm pattern typical of the South Downs, with buildings arranged around courtyards”.

They add: “The scheme does not undermine the settlement pattern or erode the separation between Graffham and Woodcote. Development is contained within the setting of an existing rural hospitality site and does not introduce suburban form or ribbon development.”

Existing lighting that does not comply with the region’s “dark skies” requirements would be replaced with “a low-level, warm colour, fully shielded scheme using motion sensors and curfews”, reducing upward light spill and glare. Levels in parking areas would be around 1 lux, “significantly below standard lighting levels”.

The site’s ecological appraisal describes the fields around the property as providing “limited biodiversity value”, noting that the proposals would deliver “net ecological enhancement through the creation of wooded areas, meadow, orchard and restored hedgerows, alongside sensitive management of existing trees”.

The updated design statement pledges that “no weddings or events are proposed as part of the application, and any such uses would require separate consent”, adding that “tranquillity is a defining special quality of the national park and has been treated as a core design and operational consideration”.

It states: “Concerns that the proposal does not serve the local community are understood, particularly in relation to pricing and perceptions of exclusivity. However, it is not accurate to suggest that The Woodcote is not popular locally. In reality, it is already well used by people from the village and surrounding area and has an established local following. The ability for local residents to access high quality dining and hospitality within a very short distance, without the need to travel elsewhere, is in itself a significant community benefit.

“The scheme has been deliberately structured to broaden accessibility and choice.



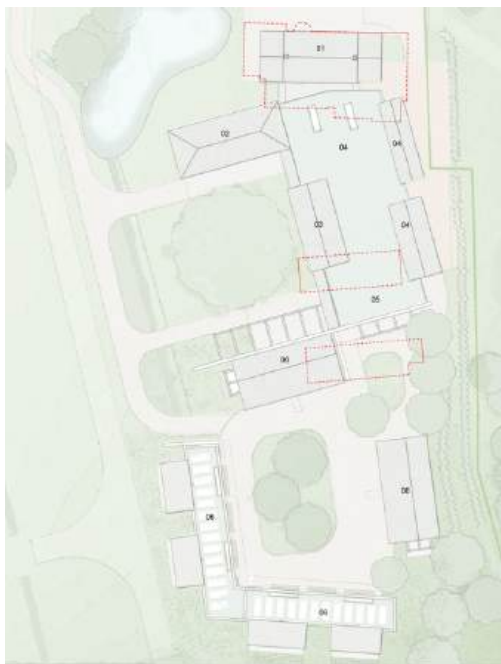
Pointing the way New road signs have been installed at the turn offs towards Graffham on both the A285 and A286 – directing motorists to The Woodcote. The brown tourism signage appeared just before Christmas.

The introduction of the bar brasserie is specifically intended to provide a more casual and approachable dining option at a realistic price point, supporting everyday use and fixed-price lunches while maintaining quality. Alongside this, the restaurant offers a fine dining experience centred on locally sourced food, allowing people to enjoy the highest quality locally rather than travelling further afield or to London.

“Having both a high quality brasserie and a fine dining restaurant in close proximity creates genuine choice for local people and those in the surrounding area, responding to changing lifestyles and expectations and supporting a wider range of occasions and budgets.

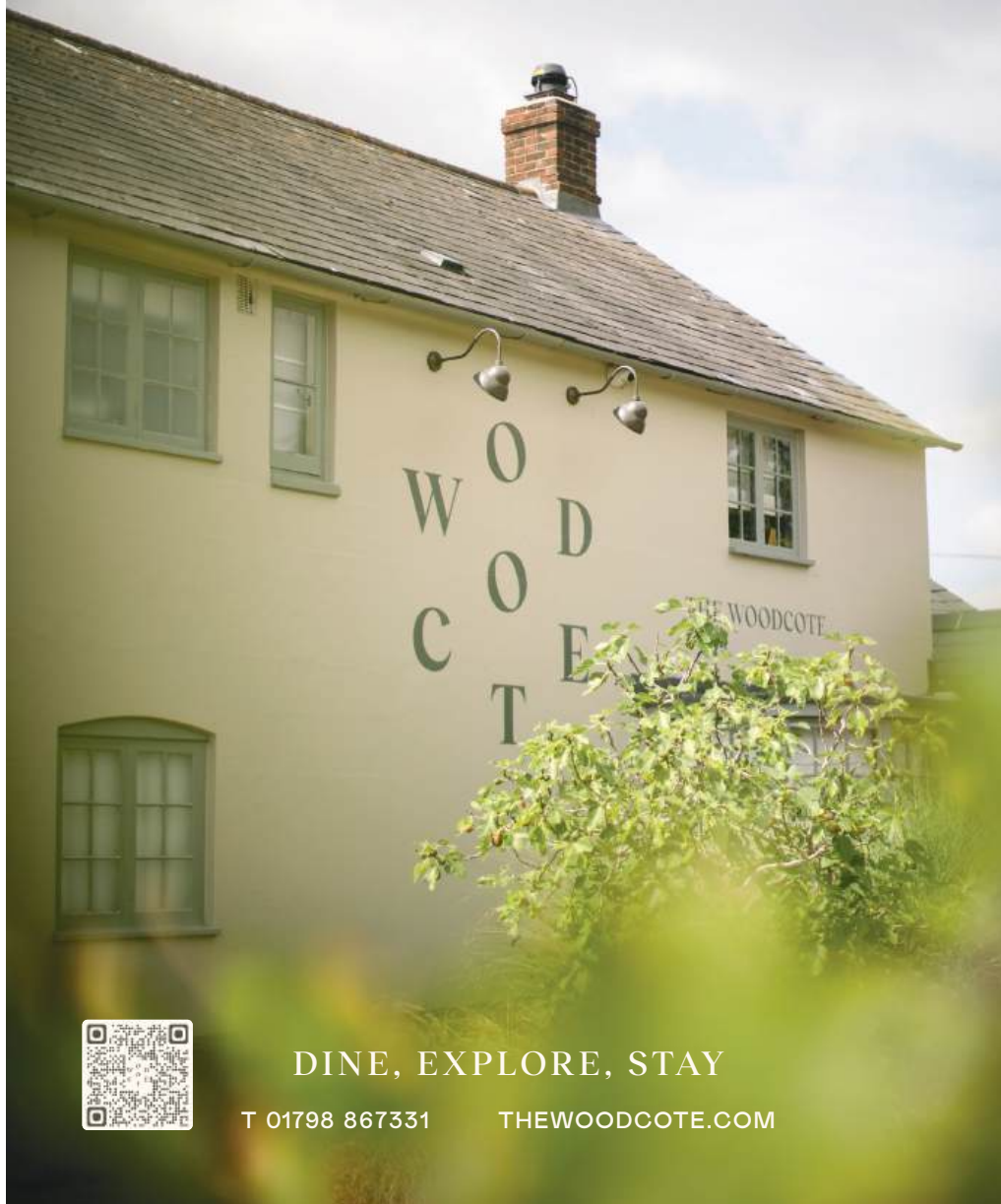
“This balanced approach also provides important context for the closure of the former pub. Its failure should not be understood as a lack of local support or shortcomings in management or quality, but as a consequence of market dynamics. There was a relatively high concentration of pubs serving a small local population, which inevitably diluted demand and made long-term financial sustainability difficult for any single venue. The proposal responds directly to those realities by offering a more resilient mix of uses complementing rather than competing with existing pubs, targeting a different market segment and attracting visitors who also support the wider village economy.

“Beyond direct patronage, community benefit is reinforced through local employment, the use of Sussex suppliers, partnerships with schools, engagement with local cultural initiatives and a strong emphasis on local produce and sustainability, which delivers both environmental and economic benefits. Taken together, the investment enhances the reputation of Graffham, strengthens its position as a desirable and well supported village and contributes positively to the wider community and local economy.”



The proposed footprint of the expanded Woodcote, with the existing buildings outlined in red.

THE WOODCOTE



DINE, EXPLORE, STAY

T 01798 867331

THEWOODCOTE.COM



I'm dreaming of a white January... Graffham woke to a light dusting of snow on the morning of Monday 5 January, with a few further flakes falling the following day while temperatures dropped below freezing – as captured in pictures posted at the time on Facebook's Graffham Noticeboard, with thanks to those who took them.



THE MARTIN SEWELL
BUILDING COMPANY

Your vision,
our expertise.
Building your dream
home, together

An Award Winning,
Chartered Building Company



ABOUT US

Having worked in the Sussex area since 1985, our dedicated & highly skilled team are passionate about delivering outstanding results & creating dream homes for our Clients.

MSBC has built a reputation based on an ethos of openness, strong communication and honesty.

WHY CHOOSE US?

Experienced in delivering a wide range of high quality building projects, from bespoke new builds to the sensitive renovation of listed buildings or extensions and refurbishments for private & commercial premises.

CONTACT

01243 542 056

www.msbc.uk.com

admin@msbc.uk.com

AWARDS



INVESTORS IN PEOPLE
We invest in people Gold



Your next move made simple.

Thinking about selling or letting your property?

Book your free, no-obligation valuation today
and take the first step with Tod Anstee,
your local property partners.

Residential Sales & Lettings
New Homes
Country Homes
Rural Estates
Commercial

Midhurst | 01730 774 700
Chichester | 01243 523 723

**Tod
Anstee**

todanstee.com



Planning applications and decisions

Details for Graffham, East Lavington and nearby filed with the South Downs National Park since our previous edition. For details, see bit.ly/sdnp-planning

Woodfire Camping gains approval to continue permanently

Woodfire Camping, at Westerlands, has been given the go ahead by South Downs National Park Authority planners to continue to operate on a permanent basis after giving temporary approval five years ago. The site offers pitches for 24 tents, including up to five motorhomes and has an outdoor kitchen, two toilet blocks, a shower/washing up block, a wooden shelter for diners, space for a non-permanent trailer for use as its manager's accommodation and a car park, in a field on the estate's 1,000 acres of pasture and woodlands. The planning approval is for Woodfire Camping and its owners only – so if they stop using the land as a camp site, all structures would need to be removed and the ground restored to grazing.

Woodfire Camping, Westerlands, East Lavington GU28 0QJ: Change from temporary to permanent use as a campsite. SDNP/24/04099/FUL. APPROVED 19 December 2025

Planning inspector rejects appeal against Tangletrees refusal A government planning inspector has supported a decision by Chichester District Council (CDC) planners, working on behalf of the South Downs National Park Authority, to refuse planning permission for the replacement of Tangletrees, overlooking Graffham Recreation Ground, with a new house. CDC officers rejected the proposal in August 2024 after refusing permission for an original application for the development in February 2023.

In his ruling, planning inspector David Prentis said the increased size of the proposed new building would result in “harmful visual impacts” for users of the Rec and nearby bridleway and footpaths, with elements which “would be unsympathetic to the predominantly rural setting and out of keeping with locally distinctive building typologies”.

The owners have meantime adjusted their proposal and are waiting to hear whether it gets a green light from the planning authority on the third attempt.

Tangletrees, Graffham GU28 0QA: Replacement dwelling, ancillary building and associated landscaping including ha-ha and pond. SDNP/25/00047/REF. *APPEAL AGAINST REFUSAL DISMISSED 12 December 2025*

- [More planning updates on page 21](#)



T: 01798 688078
E: office@ghinn.net
www.ghinn.net

BUILDING EXCELLENCE SINCE 1964

Family-Run | Skilled Trades | Quality Workmanship

Whether you're restoring a listed building, planning a modern extension or considering replacing your bathroom or kitchen, we offer honest advice, expert craftsmanship and a commitment to quality from start to finish.



Large Projects

- Heritage & Period Buildings
- New Builds
- Exceptional results with traditional values

Extensions, Alterations & Small Works

We undertake extensions, alterations and small works, offering the same high standard of craftsmanship and care to projects no matter what size.

Heating & Plumbing Division

- Full central heating installations & upgrades
- Boiler servicing, repairs & replacements
- Beautiful new bathrooms – design to installation
- General plumbing & maintenance

Serving Petworth and the surrounding villages.

- Honest, friendly advice
- Prompt, tidy and affordable service
- Free no-obligation quotes

**Call us today to discuss your project –
*we'd love to hear from you.***

**Contact us on 01798 688078
or email office@ghinn.net**



We're Gas Safe and OFTEC registered, so you can have complete confidence that every job is carried out safely and professionally.



Other planning decisions

Ambersham Farmhouse, Selham Road, South Ambersham GU29 0BX: Erection of a garden shed, new swimming pool and associated landscaping. SDNP/25/01665/HOUS. *APPROVED 11 Dec 2025.* Demolition of the existing lean-to conservatory and the erection of a garden room and associated works. SDNP/25/01635/HOUS/ SDNP/25/01587/LIS. *APPROVED 12 Jan 2026.*

Perrott Farm, Woodcote Lane, Graffham GU28 0NZ: Removal of existing hall stair case, repositioning of hall steps and levels and reconfiguration of utility room. SDNP/25/01079/LIS. *APPROVED 11 Dec 2025.*

Applications

Marsh Cottage, Woodcote, Graffham GU28 0NY: Removal of existing conservatory and four outbuildings. Two storey rear extension and single storey side extension and erection one workshop outbuilding with photovoltaic panels with associated works. SDNP/25/05074/HOUS. *Validated 22 Dec 2025. Determination deadline 16 Feb 2026*

Property watch

Homes for sale locally, posted at [rightmove.com](https://www.rightmove.com) since our previous edition:



Brook Lodge, Graffham Common Road, Graffham GU28 0PY: Detached house, three bedrooms, two bathrooms plus cloakroom, reception and dining rooms, kitchen/diner, utility, study, integral double garage. 255sq m (2,746sq ft). Garden and woodland almost 0.5 acres. Guide £875,000. *SOLD STC. Barrington & Co, Petworth 01798 309657. Listed 1 Dec.*

The Barn, Duncton Common, Heath End GU28 0JX: Detached converted stone barn, house, three bedrooms plus a dressing room, three bathrooms, sitting and dining rooms, kitchen, utility, garage. 191sq m (2,061sq ft). Courtyard and garden of 0.45 acres. Guide £935,000. *Savills, Petworth 01798 303558. Listed 5 Jan.*



9 BELOW ZERO

'45 YEARS OF LIVE AT THE MARQUEE' TOUR 2025/6



PETWORTH EMPIRE HALL

GRAFFHAM **GU28 0QB**

8.00PM **SATURDAY MARCH 14TH 2026**

DOORS AND BAR OPEN 7.30PM

In 1980, Nine Below Zero set the British blues-rock scene ablaze with their legendary debut LP, *Live at the Marquee*. Now, 45 years later, the band is hitting the road to celebrate this iconic record, bringing their electrifying live show to audiences across the UK and beyond. Following the success of their debut, NBZ kept the energy high with *Don't Point Your Finger* (1981) and *Third Degree* (1982),

touring with rock giants The Who and The Kinks. Their raw, high-energy performances earned them TV spots on *The Old Grey Whistle Test* and *The South Bank Show*.

Join Nine Below Zero for an unforgettable night of blues, rock, and rhythm & blues as they revisit the album that started it all. Don't miss this chance to witness one of the UK's most explosive live bands in action!

TICKETS: [BUYTICKETS.AT/EMPIREHALLGRAFFHAM](https://www.buytickets.at/empirehallgraffham)
STARTING AT £27.50 PLUS £1 SERVICE FEE

Nine Below Zero gig is hall's 'most ambitious yet'

This year's programme of events at the Empire Hall kicks off with the venue's "most ambitious yet" – a gig by one of Britain's most respected R&B bands, 1980s South London legends Nine Below Zero, on Saturday 14 March.

Our hall will be the final stop on the headlining band's tour to mark 45 years since the release of its breakthrough album *Live at the Marquee* – Newcastle, Derby, London's Walthamstow... and Graffham! As such, the village features on the official tour T shirt and other merchandise. For tickets, from £27.50 each, go to buytickets.at/empirehallgraftam

The gig follows October's by the Ultimate Coldplay tribute band, which was a complete sell-out, like many other of the hall events.

The Empire Hall's volunteer impresario Jim Kirke says: "I've been organising events at the hall for nearly 10 years, with the goal to deliver fun and entertainment while raising funds for the hall. The upcoming Nine Below Zero event is the most ambitious yet, with the band having headlined iconic venues worldwide.

"We're honoured to host the final night of their national tour, and it's shaping up to be another unforgettable show. Expect world-class blues rock, big energy, and the atmosphere only a live Nine Below Zero gig delivers!

"The event costs £4,200 to put on, so we need to sell 75 per cent of the hall's capacity to break even. Any surplus revenue from ticket and bar sales goes to the hall's enhancement and capital funds. Over the decade, the roughly four live performances a year we have staged have generated around £4,000 in profit annually for the hall.

"I aim to offer a range of events that entertain a majority most of the time and a significant minority all of the time. Despite the stress of promoting and committing to events, I've been lucky enough not yet to experience a loss-making event. However, if everyone in the village could share information about our live performances with your friends and contacts this would undoubtedly help and be greatly appreciated. Graffham is incredibly fortunate that The Empire Hall is a

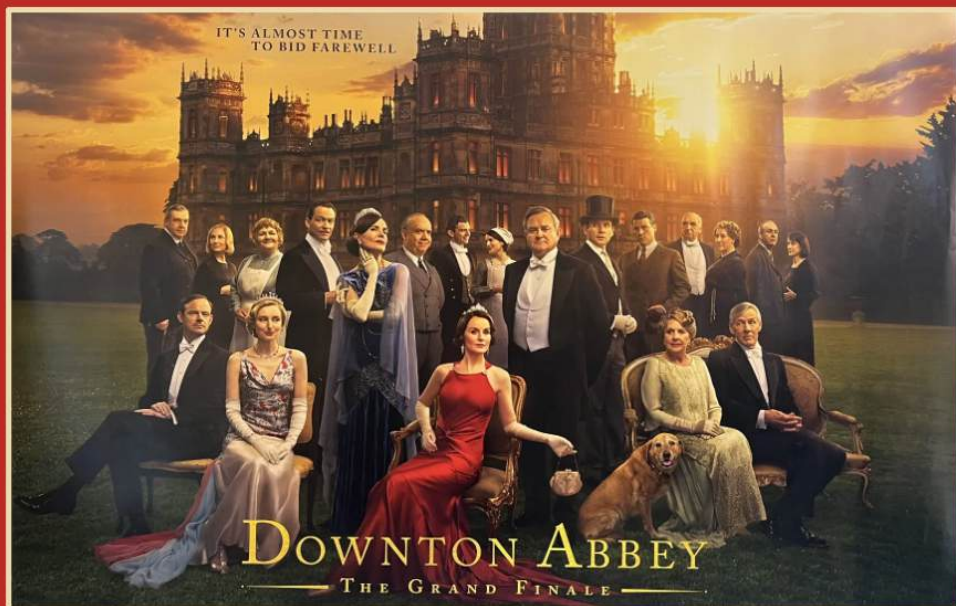


Graffham's Empire Hall features as the final stop on Nine Below Zero's official 2026 tour T shirt! Available in sizes S, M, L, XL, XXL at £25 each, you can reserve yours ahead of the gig by emailing empirehall@gmail.com

► *Continued on page 25*

Graffham Empire Movies

Bringing cinema to the village – and raising funds for our Empire Hall



In the third and last film spin-off from the TV phenomenon, it's time to say goodbye as the Crawleys and their staff enter the 1930s. When the leading lady finds herself at the centre of a scandal and the family faces financial ruin, the entire household must embrace change.

Critics said it was 'as soothing as a cup of tea' and 'a satisfying and heartfelt farewell truly befitting the Crawleys'.

Certificate PG

124 minutes

Saturday 28 February

Empire Hall

Doors and bar open 7pm for 7.30pm start

Interval ice creams

Wine, beer, mocktails, choccies, popcorn.

Tickets – £10 adults – from ticketsource.co.uk/GEM or at the door



► *Continued from page 23*

safe, convenient, friendly, and intimate venue for high-quality live performances, suitable for both new experiences and nostalgic adventures, imagine how far one might have to travel to find a similar experience, if one even exists!”

Other events lined up for the Empire Hall this year include:

- Behind Enemy Lines, a play with live music and original songs that recounts the true story of special operations executives in World War II, on 16 May.
- Pink Floyd tribute band Wall of Floyd on 19 September.
- The return, by popular demand, of the eight-piece band Le Freak, featuring the music of Nile Rogers and Chic, on 14 November.

New hands at helm of Petworth Festival

Petworth Festival is to be under new leadership from 2027 after incumbent artistic director Stewart Collins announced that he is to step down at the end of this year’s extravaganza after 15 years in the role. He will continue to oversee the Petworth Literary Festival, which was launched under his watch in 2011. He will be succeeded by violinist Lizzie Ball and pianist Charles Owen. Lizzie is currently director of Ronnie Scott’s Classical Festival while Charles leads the London Piano Festival. Petworth Festival was launched by Lord Egremont 46 years ago.



CHARITY BRIDGE TEA

in aid of St Giles Church, Graffham

Thursday, 5 February 2026, 2-5pm

The Empire Hall, Graffham

Donation of £60 per table

*For more information and to reserve a table, please contact
Nettie Lanaghan on 07798 624466 or at thornhills@aol.com*

Saturday 14th February 7:30pm

"Words by the Hearth"

The Foresters Arms

Share your
favourite
poem

Lousy Limerick
challenge

A special fireside evening of words, warmth and laughter, rejoicing in the importance of platonic bonds and community friendship, hosted by Daryl Ilbury.

*Whether you're a couple, single or a group,
join us for a relaxed evening of poetry and prose.*

Menu from the Graffham Cookery Book served from 6pm.

If you enjoy the spoken word, good food, drinks, the convivial buzz of village folk, then come along and share your favourite poem or prose, by someone else or something you have written, in a relaxed encouraging environment. Or just sit back with a pint in hand to listen and laugh with friends.

Limited space so booking advisable 01798 867386



Coffee, cake and a chat

Other drinks and bakes also available!

Wednesday 4 March 11am

The Foresters Arms

Absolutely everyone welcome!

Donations in aid of St Giles Church

Olympics, Scrabble, poems and more at Foresters

The Foresters Arms has a busy programme of events in February, featuring a Winter Olympics evening, Scrabble, poems and pints plus cakes and coffee – and with its February menu featuring recipes from the Graffham cookery book published in November (see page 10).

Landlady Cindy Bradley said: “We welcome everyone here, whether you’re a couple, with a group of friends or just dining on your own. We are happy for you to sit by yourself or we can organise tables for singles to sit together and make new friends. Good friends and good food make the best memories! We are a family-friendly environment where hospitality and our Christian faith are at our core.”

February’s fun and games start with an Alpine-style evening on Friday 6 February when it will screen the opening ceremony from the Winter Olympics, being held this year in Milan. There’ll be glühwein, Italian wines, hot chocolates and complimentary marshmallows to roast – and Woodies’ mobile woodfired pizza van in the pub’s car park.

On Thursday 12 February from 6.30pm, the new Foresters’ Scrabble Club will be holding its second meeting. All welcome. The following evening, Friday 13 February, the pub hosts its regular Drinks With Friends sessions. Then on Valentine’s Day evening, it stages another poetry, prose and pints sessions, hosted by Daryl Ilbury, following the debut sell-out event in October (see opposite page).

For all events planned at all our local hostelrys, see What’s On on pages 52-55.



Vintage tractors trundle through the village

More than 30 old tractors trundled through Graffham and Selham a couple of days after Christmas as part of the South Downs Vintage Tractor Club’s annual fund-raising run. Taking in many local villages on Sunday 28 December, they stopped for lunch at The Three Moles.

The event is open to any pre-2000 tractor and raises money for charity. December’s run brought in £800 for Macmillan Cancer Support.



RIP Tim Copeman 1933-2025

Tim was born as the second of four children in April 1933 in Londonderry, where his father, Lt Col Charles Copeman MC, was stationed at the time.

His father was recalled to the Army at the start of World War II after retiring. The family decided that it would be safer abroad for mother Dora and the four children, so they sailed for Canada on one of the last convoys carrying children. (The City of Benares was torpedoed shortly afterwards with Graffham's Sonia Williams on board – *GPN* September 2025). The ship had to zig-zag to avoid the U-boats and passengers were told that if anyone went overboard it would not turn back for them. With four boisterous children to supervise this was utterly nerve-wracking for Tim's mother. Fortunately, they and the ship arrived safely, and four happy years ensued in Toronto, with Tim attending Upper Canada College.

In 1944 Churchill declared that children should return to English schools, and Tim was put on an aircraft carrier but could not be told at which port they would disembark – and where his aunt could collect him.

He then attended The Leys prep school, which had been evacuated to the Lake District, where he was nicknamed 'The Yank' because of his Canadian accent. That had subsided by the time he went on to Wellington College in 1947, where, because of his small stature, he was initially labelled 'Tiny Tim'. In due course, he ended up 6 ft tall.



He spent his National Service with the 15th / 19th The King's Royal Hussars as a 2nd Lieutenant, driving scout cars in Germany. He enjoyed it to the extent that he signed up for the Territorial Army and, despite asking for a southern regiment, was placed with the Ayrshire Yeomanry, where he made many good friends. He went on to attend Clare College, Cambridge, as his grandfather, great-grandfather and great-uncle had done. He read Natural Sciences while indulging in his hobbies and playing clarinet in a jazz group. As a young man, he also joined Bosham Sailing Club.

After graduating, Tim entered the nascent computer industry in 1958, starting with British Tabulating Machine Computing, which became the better-known ICT and later ICL. He would remain in the industry for the rest of his working life, apart from a brief spell in 1962 when he was seconded to the UK government's Foreign

Office, writing speeches for a prime ministerial visit to Scandinavia. Tim met his wife Adine in 1963, at a dinner party in London. Her parents lived in Hong Kong, where her father was Director of Civil Aviation, supervising the extension of the famous Kai Tak runway. They married in October 1965 in Hong Kong. For their honeymoon, they flew from Hong Kong to Port of Spain, Trinidad, where Tim had been posted to run the firm's South America operations, stopping along the way in places like Bangkok and Beirut.

Their years in the Caribbean were very happy, with son Julian born there in 1967 and with friends including journalist, later newsreader, Sir Trevor McDonald.

Daughter Veronica arrived in 1970 after they returned to London for Tim to head the City office, after which he took up a post at the company's Putney headquarters.

As the industry moved on, Tim looked for other opportunities. In 1973, he set up his own company, Computerguard, producing and installing computerised access



systems using keypads or cards to open doors or barriers. In the early days, to provide extra income, Tim and Adine also ran a company using a technique Tim had developed for making photographic silhouettes.

A key challenge for Computerguard was keeping ahead of the large manufacturers – which it did, gaining clients such as Otis Lifts and many councils. He was 88 when he finally gave up on the commercial world, having managed to conceal his age successfully for many years!

He and Adine had moved to Graffham in 2003, naming their new house behind the Foresters after their happy family home in Putney – Hazlewell. The move turned out to be one of their greatest decisions with friends old and new. Tim was able to indulge his love of music, singing with St Giles Church choir, and played regularly at Duncton's Rother Valley Croquet Club. After celebrating their diamond wedding anniversary in October, Tim died on 4 December following a short illness. A small family funeral took place at St Anthony and St George in Duncton, in an ecumenical service conducted by Father Peter Newsom and former Graffham rector Father Mark Gilbert. Tim was buried there in a plot that enjoys views along the Downs as well as the croquet club. A memorial service followed on 19 January at St Giles, where Tim's only grandson, Bertie, had been christened in July 2010.

RIP Tim Abbot 1938-2025

Tim Abbot died peacefully on 21 December 2025 at his Graffham home of more than 40 years. A family funeral was held at St Giles Church on 8 January.

He was born in 1938 in Hertfordshire, where he spent his early years as an only child. He attended Bedford School, then Midhurst Grammar for Sixth Form.

After his A levels, he went straight into the family printing firm, Trendell's, of Haslemere. He was the third generation to run the business. For many years, he



printed *Graffham Parish News*, from shortly after the magazine was launched in 1990 with Paula Burke as its editor. The firm closed when Tim retired in 2008.

He met Tessa in the early 1960s through their parents, who both owned Salukis. They married in 1964, in St John the Evangelist Church in nearby Bury, and celebrated their diamond anniversary two years ago.

They moved to Graffham from Tillington in 1982 with their children, Steven and Annabel. Steven later married Paola in Italy and Annabel wed Bill here in St Giles Church, both happy family occasions. Tim was very

proud of his children and grandchildren and always wanted to know what they were up to – Steven and Paola and their George and James, and Annabel and Bill's Lydia and Tilly. He loved to be at home in Graffham with his large aviary of birds. He grew dahlias in the garden, joining in Graffham Garden Group activities and the Thursday Club.

He and Tessa enjoyed many holidays abroad, travelling to North America and Europe many times to enable her to judge Salukis at international dog shows. He also planned trips to Scotland in the family campervan every summer, selling it only two years ago before Steven and Annabel told him he was too old to go so far!

Tessa and family have very much appreciated the support from neighbours and friends in Graffham.

RIP Vera O'Hara 1935-2025 We were sad to hear, as we were going to press, of the passing of Vera O'Hara, who moved to the village with her daughter Karen Fisher in 2002 on a temporary basis that became permanent. Vera went on to become President of Graffham Bowls Club. A full tribute is planned for our next edition.



From Town Hall: Grim choices on budget

Our representative on Chichester District Council, John Cross, provides his regular update on his key issues of focus right now.



Despite our best efforts, there simply isn't enough money for local government – district or county councils – to do everything that residents would like us to. Once again, our funding settlement by Westminster for the next financial year arrived alarmingly late – at the back end of December, in Chichester District Council's (CDC) case – when our budgets need to be in place and ready for the next financial year starting at the end of March 2026. Even though it is an improvement on a year ago, when it arrived at the end of January, it still doesn't leave much time.

And – surprise, surprise – the settlement for Chichester District was a funding cut. Again. I always find it odd that the financial allocation from central government makes up such a large proportion of a council's budget, with the council tax we levy meagre in comparison. Yet there is so much accountability and responsibility loaded onto local elected councils, while the power remains at the whim of the Minister of Local Government and the Chancellor. Every year we go begging to them for the very money that we pay them in tax!

A case in point is the funding of young adults that have left the care system, youngsters who have had a difficult start in life. Locally, West Sussex County Council (WSCC) fully funded their support as they left the care system, which isn't a statutory obligation. But the county has now asked the district councils to pay half this cost. This is not an inconsiderable amount and essentially means the district councils must find this extra cash so these young people continue to be helped. The alternative is not to stump up the money and risk these vulnerable young adults falling into destitution or not having the stable homes that those with parents enjoy.

Of course, CDC will find the money despite it not falling into our remit of local government, and WSCC will use the saving from cutting this funding to finance something else.

The key point is that these grim choices are being made as our budgets have been squeezed time and time again. If central government was as careful and responsible as CDC then this country would be in a much better position. If Westminster truly wants devolution, then devolve power, including to raise taxes, and don't cloak the current local government reorganisation as doing that. It doesn't. It will do the opposite. It's another power grab by central government.



How do parents decide which school is right for their child?

With so many choices available, finding the right school can feel like a big decision. From talking to our current families, we know that nothing beats seeing a school in action and getting a real feel for everyday life.

To support you with this important decision, we're delighted to invite families considering Reception entry in September 2026 to join us for a series of fun and engaging taster days here at our bespoke facility on our beautiful campus in the South Downs.

From Saturday 7th February, we'll be hosting our much-loved **Little Seaford Saturdays** (morning sessions), followed by midweek **Discovery Sessions** in March. These relaxed and friendly events give children the chance to explore, play and try new things, while parents can meet our wonderful staff and experience what makes Seaford so special.

Each session will focus on a different part of school life, including sport, dance and music, art and forest school, giving families a real flavour of the breadth of opportunities on offer.



Parents are welcome to stay and play or drop off, and families can book onto one or more sessions (subject to availability).

Advance booking is essential, so please contact Hayley at receptionclass@seaford.org or call 01798 867893 to find out more and reserve your place.

Registration for our Reception Class 2026 is now open.

Seaford College has recently been awarded the highest possible rating of 'Excellent' in all areas in our ISI inspection. You can read the full report here: www.seaford.org/life-at-seaford/isi-inspection-report

Our next Open Morning will take place on Saturday 7th March 2026, and we would love to welcome you to this informal morning where you will have a tour with one of our students.

Contact Hayley, Prep School Admissions: receptionclass@seaford.org

Love to learn

School report: Bookworms after Christmas

With Graffham Infant and Duncton Junior Schools now both well into their first term of 2026, Business Manager Jenny Godfrey provides her monthly update.



Library visit One of the highlights early in our new spring term for children in the reception class at Graffham Infant School was a visit to Midhurst Library. We are passionate about inspiring our young people to love books as much as we do – and it was wonderful to see them having such a fantastic time there!

Christmas lunch and nativity at Graffham All of the children at Graffham Infant School sat down to lunch together on the last Wednesday of the winter term. The Christmas fairy (our caretaker Michelle) adorned the school hall with lights and balloons which made it feel even more special and magical. The children were delighted with their generous gifts from the Friends of Graffham and Duncton, our parent-teacher organisation, which included a crown to decorate with gems and stickers, and a wooden pencil and bookmark to take home with them. It was such a memorable lunchtime.

The Graffham school nativity, held in St Giles Church, was a production called *Prickly Hay*. It was a magical few evenings full of music, laughter and important messages about why we celebrate Christmas, all beginning with a beautiful song which brought a tear to everyone's eyes.



Graffham Infants' Christmas lunch in the school hall (left) and nativity in St Giles.



Lancing College Family of Schools



**INDEPENDENT PREP SCHOOL
FOR CHILDREN FROM RECEPTION TO YEAR 8**
15 minutes from Graffham

FIND OUT MORE:

01798 831456

The Manor, Bury, RH20 1PB



Graffham Parish News' fun-packed February quiz

Ten quick fire questions from Bill Barrett to test your local, topical and wider general knowledge. Answers on page 59 (no cheating!)

- 1 Which saint, widely commemorated this month for other reasons, is the patron saint of beekeepers and the city of Terni in Italy?
- 2 Which late Conservative life peer would have been 94 on 27 February?
- 3 How old will our MP Andrew Griffith be on 23 February: [a] 45, [b] 55, [c] 65?
- 4 Daffodils represent which emotion: [a] hope, [b] chivalry, [c] jealousy?
- 5 Which poet published collections entitled *Wintering Out* (1972) and *Human Chain* (2010)?
- 6 Which Apollo mission “splashed down” safely on 9 February 1971 after a successful Moon landing: [a] 10, [b] 13, [c] 14?
- 7 How many managers have Manchester United had since José Mourinho was fired in December 2018: [a] 8, [b] 10, [c] 17?
- 8 Peter Purves, Peter Snow, Ranulph Fiennes and Lord Lucan were all either auditioned or considered for which role, which would have left them both shaken and stirred?
- 9 Leo Genn, Anthony Steel and David Tomlinson starred in which frightfully thrilling 1950 wartime gymnastic escape film?
- 10 Which Netflix sci-fi series and 1980s homage, which released its final episode last month, was created by the Duffer brothers?



Roger Poat & Partners

Funeral Directors & Monumental Mason Consultants

01730 812094

Duck Lane, Midhurst, West Sussex GU29 9DE

PRIVATE CHAPELS OF REST
PRE PAID & PRE ARRANGED FUNERALS
24 HOUR PROFESSIONAL & PERSONAL SERVICE
LONGSTANDING INDEPENDENT LOCAL FUNERAL DIRECTORS



www.rogerpoat.co.uk



Graffham Chronicles: Ancient Order of Foresters

In her column this month, local historian Pauline Goodwin focusses on Graffham's links with the Ancient Order of Foresters, at one time the world's largest friendly society.

The remarkable Graffham and Selham scrapbook compiled by the village's Women's Institute in 1947, a copy of which can be seen in the Graffham Archive, contains a paragraph on The Ancient Order of Foresters.

I was intrigued by the mention of this organisation as I remember my father, Richard Challen, having a membership card for this order. I even remember the safe place he kept his card – in a box on a high shelf by the back door. By climbing up the shoe rack, I could access all the treasures kept there, so I actually held the card in my hand. I noticed that regular payments were paid in and recorded on the bifold paper which my father took each week to The Foresters pub to pay his dues to this friendly society, an organisation with a 250-year history.

It traces its history back to 1834 when it was founded on a shared duty to assist fellow men who fell into need “as they walked through the forest of life”. It became



A recruitment poster for the Ancient Order of Foresters from Victorian times.

the world's biggest friendly society and is today simply known as Foresters Friendly. Its heritage trust notes that the original dispensation for the opening of the Graffham branch, or court to give its correct title, was in 1862, and the name given to it was “Pride of the Hills”.

Historical events remind us that there was a need for “friendly” societies back then as the 19th century was a time of great turmoil. The Napoleonic wars ending in 1815 had left the nation strapped for cash. There was mass unemployment, and workers were financially squeezed from all sides. Wages had dropped to a starvation level six shillings a week. Harvests had failed. If you were unfit for work through sickness or injury, you



The Foresters Arms with Alberly's shop next door from the early 1900s.

faced losing your job – and the tithed home that came with it. New agricultural machinery did the work of many workers. All were causes of the uprisings which plagued the country, like the Swing Riots that swept across southern counties.

Friendly societies emerged with a clearly identified purpose – to allow people to contribute voluntarily to a financial fund which, in the event of a member's illness or death, would provide a benefit, not charity, to sustain the worker. It was a self-help scheme still needed in the 1960s, as evidenced by my father.

It has often been said that friendly societies inspired the formation of the NHS. There was large one in Wales called Tredegar Workmen's Medical Aid Society where Aneurin Bevan, the health minister who founded the NHS, was born. No wonder then that when he launched the health service he said he intended to "Tredegarise" the entire UK.

In the 19th century, friendly societies were seen as challenging the existing establishment and so there was a clamp down on them.

Locally, this is evidenced by the installation of a peep hole in the door to the Foresters Arms' large upstairs meeting room, where Pride of the Hills meetings were held. The spy hole is still there today.

Records show that in 1865 S.R. Alberly (presumably the bricklayer Salter Richard Alberly who was listed in the 1871 census) was secretary and the pub was the meeting place for the Pride of the Hills. Later, three individuals with old Graffham

▶ [Continued on next page](#)

► *Continued from previous page*

surnames took office. J. Cooper was treasurer up until 1904. E. Howick of The Forge was secretary for more than 30 years. R. Albery (most likely Salter's son Richard, who was born in 1871) was the last recorded treasurer up until 1939.

The Alberys ran the Foresters Arms – the pub and the shop and bakers alongside it – from 1903 until 1959 and were associated with the Pride Of The Hills for much of this time and before. So the movement was strong in Graffham. Indeed, the pub was renamed the Foresters, initially the Royal Foresters Arms, in the mid 1800s after trading as the Star and Garter in its earlier times. When the change of name took place has not been traced, but it was said to be because of the pub's connections with the Ancient Order of Foresters and the Alberys.

That item in the WI scrapbook on The Ancient Order of Foresters focuses on Brother George Albery, claiming, in its very first sentence, that this man, born and bred in Graffham, was “the greatest Forester that ever lived”.

According to this Ancient Orders' Scroll of Honour for George, he was born in 1839 and was one of an agricultural family of nine who lived at Haylands.

It should be noted that the Albery family archive claims that George was always called Salter Albery. He attended the Free School in Graffham but it was compulsory to leave at a young age. Luckily, his intelligence at school “attracted the attention of the clergyman of the parish and for some years he continued to get instruction from the Rev. R. W. Randall”. George worked for the corporation in



Top Forester George Albery of Graffham

Brighton for 21 years then spent two years visiting the principal towns of the United Kingdom. He joined the Ancient Order's Court Maid Marian, believed to have been in the Nottingham area, in 1864 and worked his way up within the Brighton district until 1870 when he made his first appearance as delegate at a district meeting.

Following further promotion, he was elected by the district as its delegate to attend High Court Meetings in Greenwich, Manchester, Leeds, Leicester and Glasgow.

The WI scrapbook article declared that “he reached the top of the tree in Forestry by becoming High Chief Ranger and attended 40 High Court meetings. This is a unique record!”

Bill's bygones: Cumbria, Cuba, Curry

A regular feature in which joint editor Bill Barrett looks back at what was happening in the village and the wider world this month in the past.

10 years ago – February 2016: Graffham vicar Rev Michael Barter runs a theological Lent course based on *Les Miserables*. At a public meeting called by Graffham Parish Council, an overwhelming majority of more than 80 residents call for the retention of the Foresters as a pub and reject a community purchase, hoping a private buyer will be found. With all sponsor money in, it is announced that January's Onesie Funsie Runsie raised £798 for Cumbria Flood Relief. A 1940s Tea Dance, featuring singers The Three Belles, raises £700 for the Empire Hall where it is held. After David Cameron announces there will be a Brexit referendum in June, Mayor of London Boris Johnson says he will campaign to leave. Deaths of village stalwart Lillie Puttick (aged 94), authors Harper Lee (*To Kill A Mockingbird*, 89) and Umberto Eco (*The Name of the Rose*, 84).

25 years ago – February 2001: Pru Hart takes over St Giles Church's flower rota from Sue Windsor, with Jean Bridger, Georgie Macqueen and Mary Clayton on duty this month while John and June Challen are on cleaning duty. Graffham's mother and toddler group ("Graffham Grizzlies") restarts under the auspices of Angie Thornley, Philippa Sanders and Siân Green. At the Thursday Club, Peter Pine-Coffin talks about *The Internet and How It Relates to Disabled People*. Foot and mouth disease breaks out in the UK. The Manic Street Preachers become the first western rock band to play in Cuba (Fidel Castro is in the audience). Death of iconic Australian cricketer Sir Donald Bradman (92).

50 years ago – February 1976: Members of Graffham's junior youth club host counterparts from Parklands, Chichester, on the annual "night hike" along the Downs from Graffham to Seaford College and back through Calloways to the Empire Hall, where hot soup awaits. Chiddingfold, Leconfield & Cowdray Hunt cancel meetings for several weeks after influenza breaks out in the dog kennels at Petworth Park. Magistrates fine Rogate resident Paul Gadd, alias Gary Glitter, £28 for doing 58mph in Broyle Road, Chichester (speed limit 30mph). Iceland breaks off diplomatic relations with the UK over the Cod War. At the Innsbruck Winter Olympics, John Curry becomes Britain's first ice skating gold medallist. Release of iconic movie *Taxi Driver*, starring Robert de Niro and Jodie Foster, and Genesis' seventh studio album *Trick of the Tail*. Death of artist LS Lowry (88).

SPECIALISING IN RESTORATION OF TRADITIONAL HERITAGE BUILDINGS

All aspect of roofing and construction
completed

Family run business with over 30 years of
experience

- ✓ Tiling
- ✓ Slating
- ✓ Flat roofs
- ✓ Repair works
- ✓ Chimney works
- ✓ Lead works
- ✓ General Building

CONTACT

✉ info@newheightsroofing.co.uk
☎ 07508 468418



**New or upgraded
system? Call us
today to arrange
a FREE survey**



- ★ Intruder Alarms
- ★ CCTV
- ★ Entry Phone Systems
- ★ Fire Alarms

t. 03300 945596

w. www.scorpio-alarms.co.uk

a. Pippin Farm, Toat Lane, Pulborough RH20 1BZ

**THE
FLOORING
BROTHERS**

We offer both a 'Supply & Fit' or
'You Supply, We Fit' service for carpets
& vinyl flooring. Our mobile showroom
brings the sample books to you, to
choose in your own home.



Repairs & Alterations • Coir Mats
Residential & Commercial Work Undertaken

To arrange a visit call Jon on: 07595 873598
or email: info@theflooringbrothers.co.uk

White-tailed eagle returns to Graffham's skies

The white-tailed eagle, wide-spread across the UK as the country's largest bird of prey until the last breeding pair was lost a century ago, is making a return to the skies around Graffham, thanks to a project being led by Forestry England in conjunction with the Roy Dennis Wildlife Foundation.

The majestic birds, also known as sea eagles, with wing spans of up to 2.5m (8.2ft), suffered a severe decline across Britain from the Middle Ages, with the last breeding pair in South East England recorded in the late 1700s.

Conservationists have released 45 of them on the Isle of Wight in the past six years – young that had been born in Scotland from stock re-introduced from Norway.

In 2023, chicks hatched in England for the first time in nearly 250 years at an undisclosed nest site in Sussex, with the parents breeding successfully again for the next two years.

The young are fitted with satellite tags to monitor their movements. They have been recorded flying up to 100 miles (160km) a day over the South East, including above our village.

Graffham wildlife enthusiast Miles Amin spotted one for the first time in England while driving up Duncton Hill on 17 January.

It is not all good news, however. One of the chicks that fledged in the wild in Sussex last summer disappeared suspiciously in September. Its satellite tracker was found in the River Rother, in an area around Harting Down and Petersfield, close to its last recorded location. It had been cut off the bird's leg using a sharp instrument. No trace of the eaglet has been found. The public are being asked to help the police who are investigating.



A pair of white-tailed eagles in Southern England

© Forestry England and Roy Dennis Wildlife Foundation.



This map, posted by the BBC, shows the track of just two of the recently reintroduced white-tailed eagles in the skies over West Sussex.



Page Plumbing

Bathrooms Showers
Plumbing

Fully insured

07814 542257

info@pageplumbing.co.uk

Timberscapes

From a family of skilled craftsmen and gardeners

We cover all aspects of hard landscaping
and carpentry

- Outdoor structures, home offices, barn renovations, pergolas and more
- Timber retaining walls and raised beds
- Groundworks - from drainage to levelling
- Fencing - domestic and agricultural
- Patio and drive installations

*From design to build,
Timberscapes has you covered.*

07913 118780

greg@timberscapes.co.uk



Midhurst Tailor Touch
MT

sewing - alteration room

midhursttailor@gmail.com

01730 642156

Hollist House, West Street,
Midhurst GU29 9NF

*Styling/Restyling
Ladies & Gents Tailoring/Alterations
Bridal/Bridesmaid Dresses
Prom and Special Event Gowns
Coat/Jacket Relining
Leather/Fur Repairs*



Country Artisan Interiors

A personalised made-to-measure
service of bespoke hand-sewn
curtains, Roman blinds, cushions
and lampshades – as well as
a collection of handcrafted gifts.

*We welcome visitors by appointment
to our workroom in Duncton.*

Please contact us to discuss your
requirements

on 07796814418 or email

lesley@countryartisaninteriors.co.uk

www.countryartisaninteriors.co.uk

Out and about: Backs against the wall

A now regular column by village amateur botanist Jonathan Simons who still has a lot more to get off his chest.

In a previous edition of *Graffham Parish News* Michael Blencowe wrote about the Common Lords and Ladies, *Arum maculatum*. I followed up by describing the rarer UK native, Italian Arum or *Arum italicum*. Our wild plants are more accurately described as being *Arum italicum* subspecies *neglectum*.

To complete the picture, we must also consider the Marbled Arum, *Arum italicum* subspecies, a different subspecies. It is not native to the UK but has been very popular as a garden plant in the past. It is usually marketed as *Arum italicum* 'Marmoratum' after the marbling of the leaves. As with the native subspecies, these leaves appear during the later months of the year. The orange berries in summer are much sought after by birds, who can help to spread the plant. However, all parts of the plant are toxic to humans and can irritate the skin.

You can see swathes of them in West Dean gardens and at Wisley. The toxicity is not a problem as otherwise these public spaces would not have so many on display.

However, if you keep your eyes open you will see patches by roadsides and in lay-bys in our village, flourishing as a result of the fly-tipping of garden rubbish. There are three such locations between Millburgh Hall and The Three Moles alone. If you are gardening on a budget I suggest you keep a trowel in the car in case you spot some. That is better than paying £10 or more at a garden centre and you will, like me, be helping to clean up the countryside and rid it of foreign invaders.



A Marbled Arum *Arum italicum* in leaf and after producing its orange berries.

Nature Notes: Out, standing in their field

A regular column by Sussex naturalist and wildlife guide Michael Blencowe, who can regularly be spotted in and around Graffham.

For sheep, life is like one long festival. They're either stood crowded together in a muddy field in the rain or running around in the sun trying to score the best grass. Next time you're walking on the South Downs, you'll no doubt see our woolly friends living the good life. But don't be fooled. They're actually hard at work on the most important construction job in Sussex – making perfect chalk downland.

You can keep your tropical rainforests and your underwater reefs. For me, chalk downland is the world's number one natural wonder. This rare habitat supports an extraordinary diversity of wildlife and, in Sussex, it's right on our doorstep.

Paradoxically, wildlife-rich chalk downland is a man-made creation (well, credit where credit's due – a sheep-made creation). Since around 800 AD sheep grazing has created and maintained our county's iconic downland landscape.

The short sheep-nibbled turf is perfect for adonis blue butterflies, burnt orchids and a multitude of other wonderful wildlife. But, like rainforests and reefs, it's under



Work parties 2025-26

We are so fortunate to have the beautiful South Downs on our doorstep. Come and help maintain them for future generations to enjoy. Did I mention that delicious cakes, tea and coffee are provided?



Work parties meet at Graffham's St Giles Church at 9.30am. You'll need a pair of gloves, strong shoes or boots and warm clothing.

Please email jimkirke@hotmail.com if you plan to come along and say if you would like a ride up so that he can arrange transport.

7 February

Saturday

7 March

Saturday

threat. One of the main issues is neglect. Turn your back on downland and it mutates into long grass, brambles and thorn bushes, and the butterflies and orchids vanish under the cold shadows.

Sheep are our best defence against this prickly invasion. Every bite and every hoof print creates downland with an ideal varied structure – impossible to recreate by uniform mowing.

We have various rare sheep breeds in our county's grazing army. Hebrideans, Wiltshire Horns, Southdowns and the badger-faced Sheep of Graffham Down – but my favourite sheep, baa none, are the Herdwicks.

Like all heroes the Herdwick's origins are shrouded in mystery. Some say they came to Britain with marauding Vikings. Other folks say the Herdwicks swam ashore after escaping the sinking Spanish Armada. Their ancestral home is the Lake District – it's claimed 95 per cent of the world's Herdwicks live within 15 miles of Coniston Water.

They're tough sheep – hard grazin' hell-raisers who are at home in harsh hilly landscapes. If you like your sheep white and fluffy then you've come to the wrong field. Herdwicks are born black and develop white heads and legs as they mature. Their grey, wiry wool has an insulating undercoat – perfect attire for English hilltops. Feeding amongst thorns and thickets can leave their coats looking torn and tatty – this isn't a cause for concern, just proof that they're hard at work. Because for Herdwicks, grazing is a passion – not a fashion show.

- You can find details of Michael's upcoming events, wildlife sightings and adventures or book him for a wildlife survey of your garden or land at:



A Herdwick lamb with its mum.





Tennis Coaching 2026



GRAFFHAM TENNIS CLUB

HOPP COACHING

Free

Junior Taster Session

Wednesday 18th February

YrR – Yr6

After School Tennis Club

Wednesdays
3.30 - 6.15pm

YrR – Yr6

Starts 4th March

Easter Tennis Course

Monday 30th March –
Thursday 2nd April

YrR – Yr11

Group times and ages tbc nearer
the time

Summer Tennis Course

Wednesday 22nd - Friday 24th July

YrR – Yr11

Group times and ages tbc nearer
the time

Adult Coaching

Rusty Racquets

Wednesdays 1.45 - 2.45pm
Fridays 3.00 - 4.00pm

Foundation technique, drills and
match play tactics.
Runs all year round.

Individual and Private Groups

Lessons available for private
bookings for 1 to 8 people.
Organise your own group of
players to get some coaching
and improve your game.



Sponsored by:



richard@hoppcoaching.co.uk 07904 069457 www.hoppcoaching.co.uk

Graffham Tennis Club



League matches Fixtures are piling up for the club's two league teams following a series of autumn cancellations. Out of the six teams in the East Hants League Division 2, Graffham's A team are lying in second place with the B team fifth.

Graffham Tennis Club East Hants results				
14 Dec	Lost 6-2	Mixed Doubles B team	Div 2	v Fernhurst A
18 Jan	Graffham A beat Graffham B			

Upcoming home fixtures:

Graffham Tennis Club February home fixtures				
1 Feb	1.15pm	Mixed Doubles	Div 2	Graffham B vs Haslemere B
8 Feb	1.15pm	Mixed Doubles	Div 2	Graffham B vs Headley A

Coaching The club's coaching programme for 2026 has now been finalised. For juniors, there will be a free taster session in half-term on Wednesday, 18 February, with sessions after school every Wednesday starting on 4 March. There will also be courses during the Easter and summer holidays. For adults, 'Rusty Racquets' foundation techniques, drills and match play tactics is held throughout the year, on Wednesdays 1.45-2.45pm and Fridays 3-4pm. Coach Richard Hopp is also available for individual lessons. See poster opposite for details.

Graffham Badminton Club

Graffham's badminton players meet every Wednesday in the Empire Hall at 6.30pm. Annual subscription renewals come up at the end of March and anyone considering joining is welcome to have a free taster session or two between now and then.

If you are tempted but lack confidence then it could be arranged for you to have a 'private' session ahead of the official start time. Please contact Christina Federowicz if you would like to do this, on 07900 055574.



Badminton regulars Louise Hancock and Tony Rabina at the Empire Hall.

Foodbank's 'most urgent' shopping list lengthens

The list of items in most urgent need by Chichester Foodbank, which also covers Petworth and its surrounding villages, is much longer than usual this month. You can contribute to the foodbank at its collection points in All Saints Chapel, directly opposite Graffham Village Shop, or at St Giles Church. Items currently most wanted include:



- Cooking oil.
- Deodorant.
- Flour.
- Instant coffee.
- Hot chocolate.
- Household cleaning items.
- Jam, honey, spreads.
- Kitchen roll.
- Longlife milk.
- Longlife juice.
- Rice pudding/custard.
- Shampoo, conditioner.
- Sugar.
- Tinned fish.
- Tinned fruit.
- Tinned meat, stews etc.
- Tin potatoes/ instant mash.
- Tinned vegetables.
- Toilet roll.
- Toothpaste.
- Washing up liquid.

Need a helping hand...? Graffham with Woolavington's Parish Priest Discretionary Fund is available to help any parishioner in real financial need. Funded by donations to St Giles, it could be the answer to your prayers. Contact Rev Vivien to find out more.

BEAR PETWORTH

20th Century Design, Antiques, Home Accessories and Gifts



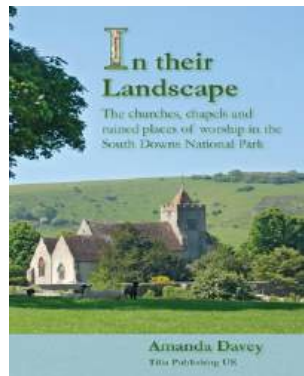
Stockist of Santa Maria Novella, David Mellor, Ichendorf Milano,
Vacaviente, Leach Pottery and Villa Bologna Pottery.

Open Monday - Saturday, 10am - 5pm
10A New Street, Petworth, GU28 0AS

www.bearpetworth.com
Tel: 01798 651066

Local churches feature in new book

Graffham, East Lavington and Selham's churches feature in a new book about the places of worship current and past across the South Downs. Geographer and photographer Amanda Davey features more than 270 churches, chapels and ruins in the national park in her book *In Their Landscape*. Besides Graffham's St Giles, Selham's St James' and the former St Peter's of Woolavington, now Seaford College's chapel, former Lord of the Manor Bishop Samuel Wilberforce and one-time rector Cardinal Manning also feature prominently. Graffham's former non-conformist chapel also gets a mention – along with churches from virtually every nearby village. Each building is photographed and given a potted landscape history. Published by Tilia Publishing, it is available from bookshops and online retailers like Amazon. Its recommended retail price is £28.50, with donations from profits to The Friends of Friendless Churches, The Churches Conservation Trust, The National Churches Trust and the Society for the Protection of Ancient Buildings.



St Giles Church's Lent Lunch

Please join us for soup, bread, cheese and conversation

Tuesday 10 March 12.45pm

Empire Hall, Graffham

Guest speaker: The Rev Canon John Bundock

John will talk about the retelling of the Christian story in dramatic form in the countryside at Wintershall, near Bramley where he was once the parish priest.

Everyone welcome! *If you would like to attend, please sign up on the form in Graffham Village Shop by 6 March to enable us to cater for you*

All donations to Wintershall Charitable Trust

wintershall.org.uk

Other denominations locally

Methodist: Midhurst. *Minister:* David Muskett *Tel:* 01730 233436. *email:* superintendent@esanddcircuit.org.uk. *Web:* midhurstmethodist.com *Worship:* Sundays 10.00am, and Café Church 1st and 3rd Wednesdays 10.30am.

Roman Catholic: The Catholic Churches of Saints Anthony and George, Dunton, The Divine Motherhood and St Francis of Assisi, Midhurst, and The Sacred Heart, Petworth. *email:* petworth.abdiocese.org.uk. *Tel:* 01798 342169. *Web:* www.petworthcatholic.org

Mass					
Sun	8am	Dunton	Thu	9.30am	Petworth
	9.30am	Midhurst		12noon	Midhurst Convent
	11am	Petworth		6.30pm	Petworth
Tue	10.30am	Petworth	Sat	9.30am	Midhurst
Wed	9.30am	Midhurst		5.30pm	Petworth

Society of Friends (Quakers): St Anne's Community Centre, St Anne's Hill, Midhurst, GU29 9NN. *Web:* sussexwestquakers.org.uk *Meetings:* 2nd and 4th Sundays 10.30am.

RINGING and SINGING: To join Graffham's bellringers or occasional choir, contact Revd Vivien on 01798 867199 or at

W. Bryder & Sons

est. 1863



*In the sad event of the loss of your
loved one you can rely on
W. Bryder & Sons to help you
every step of the way.*

INDIVIDUALLY TAILORED FUNERALS

To suit all budgets, arranged by our friendly 5th generation family run business.
Peaceful funeral homes in the heart of the South Downs countryside
Headstones & Memorials / Grave Maintenance
We can be contacted 24 hours a day

Petworth

The Gables, Tillington, GU28 9AB
01798 342174 (24 hours)

Pulborough

95 Lower Street, Pulborough, RH20 2BP
01798 872000 (24 hours)

www.wbryderandsons.co.uk | info@wbryderandsons.co.uk

What's on at our village church and chapel

- All residents and visitors are welcome to all services.
- St Giles Church is at the far south end of Graffham Street, near the Downs.
- All Saints' Chapel is opposite Graffham Village Shop. Both are open daily.
- See stgilesgraffham.org or Facebook's @stgilesgraffham for any changes.
- Bellringing practice is every Tuesday at 7.30pm.
- The Rev Vivien's rest days are Fridays and Saturdays (apart from for weddings and other special events).

February				
1	Sun	10.30am	Parish Eucharist for Candlemas <i>Reading: Malachi 3.1-5</i>	St Giles Church
3	Tue	9.30am	Morning Prayer followed by Pilgrims	All Saints Chapel
4	Wed	6pm	PCC meeting	The Rectory
5	Thu	10am	Graffham Infant School assembly	St Giles Church
		2pm	Bridge Tea in aid of St Giles	Empire Hall
7	Sat	9.30am	Come and Sing	St Giles Church
8	Sun	10.30am	Parish Eucharist 2 before Lent <i>Reading: Romans 8.18-25</i>	St Giles Church
		6pm	Evensong	All Saints Chapel
10	Tue	9.30am	Morning Prayer followed by Pilgrims	St Giles Church
11	Wed	2.30pm	Food with Friends	The Rectory
12	Thu	10am	Graffham Infant School assembly	St Giles Church
15	Sun	9am	BCP Holy Communion	St Giles Church
		10.30am	Parish Eucharist Sunday next before Lent <i>Reading: Exodus 24.12-end</i>	St Giles Church
17	Tue	9.30am	Morning Prayer followed by Pilgrims	All Saints Chapel
18	Wed	7pm	Ash Wednesday Eucharist with Ashing <i>Reading: Joel 2.1-2, 12-17</i>	St Giles Church
22	Sun	10.30am	Parish Eucharist Lent 1. <i>Readings: Genesis 2.15-17; Genesis 3.1-7</i>	St Giles Church
24	Tue	9.30am	Morning Prayer followed by Pilgrims	All Saints Chapel
March				
1	Sun	10.30am	Parish Eucharist Lent 2	St Giles Church
4	Wed	11am	Coffee Morning at Foresters' Arms	Foresters Arms
10	Tue	12.30pm	Lent Lunch including Food with Friends	Empire Hall

What's on in and around the village

For weekly events, see page 55. For church services and other events, see page 51. For home sports fixtures, see page 47.

To see what's on in the village, locally and further afield for a full year ahead, see graffham-pc.gov.uk/graffham-village-diary

February				
1	Sun	2-4pm	Open garden snowdrop festival	Manor of Dean, Tillington GU28 9AP
3	Tue	10.45am	Arts Society of Midhurst talk on <i>The Men Who Made Menswear</i>	Methodist Hall, Midhurst
		2pm	Arts Society of West Sussex talk on <i>Australian Aboriginal Art</i>	Fittleworth Village Hall
4	Wed	6pm	PCC meeting	The Rectory
5	Thu	10-11am	UKHarvest surplus food market	Sylvia Beaufoy, Petworth
		afternoon	Bridge tea in aid of St Giles	Empire Hall
6	Fri	7.30pm	Alpine evening to mark opening of Winter Olympics	Foresters Arms
7	Sat	9.30am	Graffham Down Trust work party	Meet at St Giles
			Six Nations rugby- England vs Wales	Twickenham
8	Sun	7pm	Folk music night	Three Moles
12	Thu	2.30pm	Thursday Club	Empire Hall
			South Downs Dark Skies Festival (to 22 Feb) See southdowns.gov.uk	Various locations
		6.30pm	Scrabble Club	Foresters Arms
13	Fri		Seaford College half-term (to 22 Feb)	Seaford College
			Midhurst Rother College closed	
		evening	Drinks with Friends	Foresters Arms
14	Sat		Valentine's Day	
		7.30pm	Words from the Hearth poems and pints	Foresters Arms
			Six Nations rugby - Scotland vs England	Murrayfield
16	Mon		WSCC schools half term (till 20 Feb)	
17	Tue		Shrove Tuesday	
			Chinese new year	
18	Wed		Ash Wednesday	
			First day of Ramadan	
21	Sat		Six Nations rugby - England vs Ireland	Twickenham
22	Sun	7-10pm	Blues Night ¹	Three Moles
25	Wed	12.30pm	Lunch Club ¹	Empire Hall

27	Fri	7.45pm	Petworth Sessions presents Kathryn Williams	Leconfield Hall, Petworth
28	Sat	9am-1pm	Petworth Farmers Market	Petworth
		10-11am	Community garden work party	War Memorial
28	Sat	7pm	Graffham Empire Movies presents <i>Downton Abbey: The Grand Finale</i>	Empire Hall
March				
1	Sun		<i>St David's Day</i>	
3	Tue	10.45am	Arts Society of Midhurst talk on <i>Jane Austen and the Art of Satire</i>	Midhurst Methodist Hall
		2pm	Arts Society of West Sussex talk on <i>The Mosaics of Ravenna</i>	Fittleworth Village Hall
4	Wed		Coffee morning in aid of St Giles Church	Foresters Arms
		7pm	Graffham Parish Council meeting	Empire Hall
5	Thu	10-11am	UKHarvest surplus food market	Sylvia Beaufoy, Petworth
7	Sat	9.30am	Graffham Down Trust work party	Meet at St Giles
		am	Seaford College Prep school open morning	Seaford College
			Six Nations rugby- Italy vs England	Rome
8	Sun	7pm	Folk music night	Three Moles
10	Tue	12.30pm	Lent lunch	Empire Hall
		7pm	Heyshott Parish Council meeting	Cobden Hall Heyshott
13	Fri	6.45 for 7pm	Graffham Garden Group AGM with guest speaker and spring flower show	Empire Hall
14	Sat		Six Nations rugby final day	
		8pm	Nine Below Zero gig	Empire Hall
15	Sun		Mothering Sunday	
		10.30am	Mothering Sunday service	St Giles Church
16	Mon	6.15pm	East Lavington Parish Council meeting	Seaford College
18	Wed	7.30pm	Seaford College presents <i>Miss Saigon</i> (to 21 March)	Seaford College
19	Thu	2.30pm	Thursday Club	Empire Hall
22	Sun	11.30am	Annual parish church meeting	St Giles
25	Wed	12.30pm	Lunch Club ¹	Empire Hall
27	Fri		Graffham and Duncton Schools INSET day	
			WSCC and Seaford College terms ends	

¹**Graffham Lunch Club** meets on the fourth Wednesday of the month at 12.30pm for 12.45pm for a home cooked two-course meal and coffee, at £10 a head. Please book via Sarah on 01798 867567.

HOO LI.

Design | Marketing | Words | Web


01730 816484

 @hoolidesign

hooli.co.uk | hello@hooli.co.uk

Get in touch with Julia and Rachel

Nº1 West Street, Midhurst, GU29 9NF

 front.hopefully.desktops



MOLE CATCHING

"NO MOLE, NO FEE"

WASPS / HORNETS

CONTACT ANGUS ON 07828 134086

WWW.ASCOUNTRYSIDESERVICES.CO.UK

Water Pipe Repair Services

Allan Marsh

07470 440836

Water pipe repairs
Water pipe renewals
Plumbing repairs
Water leak detection
Lead pipe replacement
Drain repairs
Outside taps fitted
Sinks, baths and toilets
Driveway and footpath repairs



ATHENA
BOOKKEEPING SERVICES

BOOKKEEPING SERVICES

for small business and sole traders

VAT RETURNS CIS RETURNS

SELF-ASSESSMENT

GENERAL BOOKKEEPING

Jennifer Sear MICB

Heyshott, Midhurst

T: 07834 765761

E: athenabookkeeping@aol.com



need help with your pc? Clive Way BA^{hons} Computing

The friendly professional service for your home pc, laptop and other device nightmares.

I am now based in Wales.
But fear not –
I can still help you with
many problems by
remotely accessing your pc,
mac, phone, ipad or other
electronica.



tel: 0791 7766254

email: cliveway@yahoo.com

HELEN'S AIRPORT CARS

"With US it can often cost less than rail or airport parking"



Saloon
MPVs
Estates
4 - 8 seaters

Reliable
Affordable &
Comfortable
Pre-booked
24hr

01243 820820

Book Online Now www.airporttaxi.co.uk

24 Sudley Road, Bognor Regis. PO21 1ER



Regular weekly activities (for notes, how to book, etc, see below)

Mondays	9-10am	Fitflows Fitness ¹	Empire Hall
	Daytime-evening	Osteopath ²	Empire Hall
	6pm in summer	Bowls Club practices – all welcome	Rec
Tuesdays	8.30am-12noon	Post Office	Empire Hall
	9-11am	Breakfast served	Three Moles
	Daytime-evening	Osteopath ²	Empire Hall
	7.30pm	Bell ringing practice – newcomers welcome	St Giles
Wednesdays	9-10am	Yoga ⁴	Empire Hall
	11.15am-12noon	Pilates ⁵	Empire Hall
	1.45-2.45pm	Rusty Racquets adults tennis coaching ⁶	Rec
	5pm	Nina's Core to Floor ³	Westerlands
	7-8.30pm	Badminton ⁷ – all welcome	Empire Hall
	Daytime-evening	Osteopath ²	Empire Hall
Thursdays	Daytime-evening	Osteopath ²	Empire Hall
	10.45-11.45am	Ease Into Exercise ⁸	Empire Hall
	6-7.15pm	Yoga ⁴	Empire Hall
Fridays	9-10.15am	Yoga ⁴	Empire Hall
	9am-3pm	Physiotherapy clinic ⁹	Empire Hall
	Evenings	Tennis Club evenings	Pavilion
Saturdays	8.30am	Boxfit with Nina ³	Westerlands
	9-10.15am	Yoga ⁴	Empire Hall
	10am	Nina's Core to Floor ³	Westerlands
	10.30am	Yoga with Kate ³	Westerlands
	9am-3pm	Physiotherapy clinic ⁹	Empire Hall
Sundays	5pm	Pickleball ¹⁰	Empire Hall
	5pm	Casual football ¹¹	Rec

Empire Hall: For booking and contact details, see Directory, inside back cover.

¹**Fitflows Fitness:** Contact Susie Bush 07870 219956.

²**Osteopath:** Bookings required. To make an appointment, for daytime or early evening, contact Anna Shawcross on 01798 303557 or see www.annashawcross.co.uk

³**For all Westerlands events:** Book online at www.westerlands.com/experiences/wild-fit

⁴**Yoga:** Deborah Albon on 07790 367009.

⁵**Pilates:** Contact Nicky Capes on 07990 517858 or 01730 812297.

⁶**Rusty Racquets:** Contact Richard Hopp at richard@hoppcoaching.co.uk, on 07904 069457.

⁷**Badminton:** Contact Christina Federowicz on 07900 055574. All welcome.

⁸**Ease Into Exercise:** Contact Susie Bush 07870 219956.

⁹**Physiotherapy:** Contact Serena Cooper on 07884 445983 or at serenacooper.physiotherapy@outlook.com. ¹⁰**Pickleball:** Contact Beanie Bradley on 07500 080417.

¹¹**Casual Football:** Contact Lucas Thornley on 07767 721997.

ROGER GUNN
GARDEN MACHINERY
SHOWROOM AND WORKSHOP



Fast Friendly Service
Competitive Prices
Collection & Delivery
Available



www.rogergunn.co.uk

Telephone 01243 786003

or 07979 752242

located between Lavant and West Dean

**Southern Counties
Tree Services**

Skilled Surgery in all aspects of Tree Care

*Hedge trimming

*Landscaping

*Tree reduction

*Logs supplied

Tel: 01243 814854

Mob: 07774 012961

barneslogs@gmail.com

CLEAR ALL
PEST CONTROL

Fully qualified professional country
services

Specializing in Hornets, Wasps, Moles,
Rats, Mice & Flies/Cluster Flies
www.clearallpestcontrol.com

Phone Dean on:

07768 986 338



Southdowns Chiropractic

Jemma Langford DC Patrick Thomas DC

Treating all musculoskeletal conditions
related to the spine, along with hips, knees,
shoulders and many soft tissue injuries.

We also offer a range of other treatments:

Foot Health, Toe Nails Cut,

Massage Therapy, Reiki

Ear Wax Removal,

01798 345145

The Old Bakery Golden Square Petworth GU28 0AP

Registered with BUPA & all major Health Insurers



Dismantling and felling
Crown thinning and reducing
Removal of deadwood Pruning
Hedge cutting Stump grinding

Full public liability

Certified arborist

Free estimates and advice



brushwoodtreeservices@gmail.com

07763 844422



Prompt and Friendly
Telephone Fran or Dean on

07768 986 338

Based in Lickfold

Est. 1990

prismwindowcleaningltd.com

Matt Wheatley

Local electrician

Part P approved contractor

Fully insured

For prompt and friendly
service, please call

07976 465974

or email

mattwheatley1971@btinternet.com



Success
No greater gift

Maths tutoring

11+, 13+, Scholarship, GCSE, A Level, IB, Pre-U

www.escry.com

simon.mitchell@escry.com 07850 125 519

CARPET & RUG DRY CLEANING
UPHOLSTERY & CURTAIN CLEANING
STAIN PROTECTION

TEL: 01730 814 965

www.magnadrysouthern.co.uk



MAGNA DRY SOUTHERN

Free Estimates ~ Fully Insured

engineering  **architecture Ltd**



We would be delighted
to help you achieve your
dream design

Architect
-
Structural Engineer
-
Builder

All buildings including
historic and listed

*The Institution
of Structural
Engineers*



t: 01428 741671
m: 07734 703777

mail@engarc.co.uk
www.engarc.co.uk

West Sussex Logs

Logs cut to size.

All seasoned timber.

Two days for delivery
once ordered

*Grass cutting, hedge cutting
and tree work also available.*

01730 814751 07950 035997

www.sussexlandworks.co.uk



- Book keeping
- Year-end accounts
- Management accounts /cash flow
- Tax returns
- VAT returns
- Payroll

CROOK & CO ACCOUNTANCY LTD

PERSONAL AND CORPORATE ACCOUNTANCY SUPPORT

hallo@crookandcoaccountancy.co.uk

07875 468786

www.crookandcoaccountancy.co.uk



CHRIS NEVILLE PLUMBER

- All types of plumbing work carried out.
 - Fast, reliable, friendly.
 - Fully qualified and insured.
- 07772 040005

Paula's Cleaning Services

Call for Quotation! 07563 722849

House Cleaning, Office Cleaning,
Deep Cleans and everything in
between!



FORESTERS GETAWAY
Cosy Country Cottages

B&B ♥ Holiday rental
Grafham village
5* Livery
07768 697427



- Puppy Training
- Dog Agility
- Pet Gun Dog Classes
- 1-2-1 Sessions

Dogs Doing Better

Kilsham Farm, Petworth GU28 0LJ

www.dogsdoingbetter.com

Call Liz 07702 009272

Or email:

dogsdoingbetter@gmail.com



- ✦ Fully insured
- ✦ Dustless sanding
- ✦ Free quotes
- ✦ Interior and exterior

07912 680750

Quiz answers (from page 35) **1** St Valentine. **2** Lord Young of Graffham. **3** [b] 55. **4** [b] Chivalry. Snowdrops represent hope, and marigolds jealousy. **5** Seamus Heaney. **6** [b] 13. Alan Shepard and Edgar Mitchell were the fifth (and oldest at 47) and sixth men respectively to walk on the Moon. **7** [a] 8 (including caretakers and interims, and Michael Carrick twice). **8** James Bond. **9** *The Wooden Horse*. **10** *Stranger Things*.



SERENA COOPER
PHYSIOTHERAPY
SPECIALIST ASIA PHYSIOTHERAPIST
MSC, HCPC, MCSP

Friday Physiotherapy Clinic Graffham

Low back pain/sclatica
Neck pain
Joint pain
Muscular aches and strains
Sporting/ligament injuries
Chronic pain
Home visits available

For more information please get in touch on:
07884445985
serenacooper.physiotherapy@outlook.com

Norwood Contractors GARDEN MAINTENANCE

Grass and Hedge cutting,
Pruning, weeding,
Planting etc.....

ENQUIRIES:

01798 867 338
Or 07973 370 727

Caytons Limited

Stuart A Hail
Specialist Oil Fired
Heating Engineer

Boilers **Servicers**
Agas **Breakdown**
 Installation

Tel 01798 344 213
M 07779 11 33 43

Email: caytonsltd@gmail.com



**Straight Line
Fencing**

With 30+ years' experience, we are the leading fencing and groundwork specialists in West Sussex and Surrey.

Quality workmanship assured, whether you need to keep children or horses in, wildlife out or just want security for your home.

01428 685222
slf@straightlinefencing.co.uk

Did you know...? You can raise funds for St Giles Church whenever you shop online – and zero cost to you. To find out how simple it is, just go to stgilesgraftam.org/shopping-online

Directory: Useful local contact info

DOCTORS	Petworth Surgery	01798 342248
	Midhurst Riverbank Medical Centre	01730 812121
	Haslemere Minor Injuries Unit	01483 782334
DEFIBRILLATORS	Empire Hall temporarily out of use	Code is C240Z
	On outside wall of Pavilion	Temporarily out of use
	In phone box outside Pescods	Code is also C159X
	In phone box opposite The Three Moles	No code needed
FLOOD ALERT for Lods Bridge	To check river level	bit.ly/lodsbridge
POLICE	In emergency	999
	Non-emergency	101@sussex.pnn.police.uk 101
BURST WATER MAINS	Southern Water	0800 820 999
POWER CUTS	Scottish & Southern Electric	0800 0727 282
99 FLEX BUS	Linking Graffham with Chichester, Petworth etc	Book via Ring Pingo app 01243 858854
All Saints Chapel Trust	Chairman Clive Rowntree	01798 867536
Badminton	Christina Federowicz	07900 055574
Bees / Swarms	Wisboro' Green B'keepers	Tom Moore 07984 606214/01798 343470
	Local beekeeper	Murray West evenings 01798 867048
Chichester District Council		01243 534734
District Councillor	John Cross	jcross@chichester.gov.uk 07592 307027
Dog Warden	Office hours/Emergency	01243 534734/01243 785339
Citizens Advice Bureau		03448 487969
East Lavington Parish Council	Chairman Simon Longman	simon.longman@eastlavington-pc.uk
	Clerk Amy Harte	07889 979820 eastlavingtonpc@gmail.com
Empire Hall		empirehall.org.uk
Bookings	Anna Shawcross	bookings.empirehall@gmail.com 07971 204287
	Chairman	Ollie Boulton 07584 625059
	Maintenance	Tom Richardson 07932 865154
	Treasurer	Carole Sargent 01798 344790
	Secretary	Jonathan Simons 01798 867689
Foodbank	info@chichester.foodbank.org.uk	01243 773687
Foresters Arms	forestersarmsgraffham.com	01798 867386
Graffham Archive	Robin Brind	graffhamarchive@outlook.com 01798 867619
Graffham Bellringers	Tower Captain	Howard Pescott 01798 867029
Graffham Bowls Club	Secretary	Liz Pegram 01798 867770
Graffham Down Trust	Chairman	Jim Kirke 01798 867026
Graffham Garden Group		Carole Kirke 01798 867026
Graff'm Health Support Assc	Chairman	Sarah Lydiard-Wilson 01798 867567
	Membership	Yvonne Churchward 07808 781510
	Transport	07391 802541
	Prescription collection	Mary Taylor mkt.bythedowns@gmail.com
	Loan of equipment	Karin Skanberg 07920 091014
Graffham Lunch Club	Sarah Lydiard-Wilson	01798 867567
Graffham Nursery	School Office	01798 867324

Graffham Parish Council	Chairman	Gillian Charlesworth	gcharlesworth@graftam-pc.gov.uk
	Clerk	Amy Harte	clerk@graftam-pc.gov.uk
Graffham Parish News	Editorial and circulation:	editor.graftamparishnews@gmail.com	
	Advertising:	ads.graftamparishnews@gmail.com	
		See also inside front cover	
Graffham with Woolavington Parochial Church Council			stgilesgraftam.org
	Priest-in-Charge	Rev Vivien Turner	01798 867199
			hallo@stgilesgraftam.org
	Churchwardens	Ginny Barrett	01798 867113
		Cindy Bradley	07787 516522
	Treasurer	Dinah Lamming	graftampctreasurer@gmail.com
Graffham Rec Committee	Chairman	John Bracey	01798 867760
	Bookings Sec	Sonya Gillespie	graftamrecpavilion@gmail.com
Graffham Tennis Club	Chairman	Simon Longman	01798 867317
	Secretary	David Sparkes	07958 486211
	Coaching	Emma Amin	01798 867063
Graffham Village Shop		Jeeva and Vasu	01798 867700
			graftamvillageshop.co.uk
Graffham Village Shop Assoc	Chairman	Steve Dover	07770 499223
	Treasurer	Andy Jones	andy.jones@graftam.net
	Secretary	Ros Britton	rosalind.britton@btinternet.com
Katherine Maud Guillod Fund	c/o Graffham PC Clerk		graftampc@gmx.co.uk
Lavington Estate	info@lavingtonstud.co.uk		01798 867275
Lavington Park Federation			graftamanddunton.w-sussex.sch.uk
	Graffham CE Infant School		01798 867324
	Dunton CE Junior School		01798 342402
	Friends of Graffham & Dunton Schools		01798 867324
Long Bostle Downland Soc		Gillian Brandt	01798 867276
MP Arundel & South Downs		Andrew Griffith	andrew.griffith.mp@parliament.uk
Midhurst & Petworth Observer			01243 534163
National Trust (Lavington Common)			01730 816638
Neighbourhood Watch		Michael Crickmay	01798 867486
Osteopath		Anna Shawcross	01798 867523
Oil Buying Syndicate		Derek Bradnum	derekbradnum@gmail.com
Pilates at Empire Hall		Nicky Capes	07990 517858
Potholes	To report a pothole or other road problem online		bit.ly/report-potholes-west-sussex
Seaford College			01798 867392
Three Moles		Ollie and Tom	thethreemoles.com 01798 861303
Thursday Club	Secretary	Diane Bellis	01798 867444
West Sussex County Council		General enquiries	01243 777100
	County Councillor	Tom Richardson	07463 785039
The Woodcote (formerly White Horse)		thewoodcote.com	01798 867331
Yoga at Empire Hall		Deborah Albon	07790 367009



JACKSON-STOPS

PROPERTY EXPERTS SINCE 1910



'I'm afraid I'm in a board meeting at the moment - I'll get back to you in a couple of hours...'

Downsizing, Upsizing, Extending?

**If you are considering the sale of your property or
need good advice, we would love to hear from you.**

**Please get in touch with our team in
Midhurst to find out more**

**01730 812357 midhurst@jackson-stops.co.uk
Market Square, Midhurst, West Sussex, GU29 9NJ**