

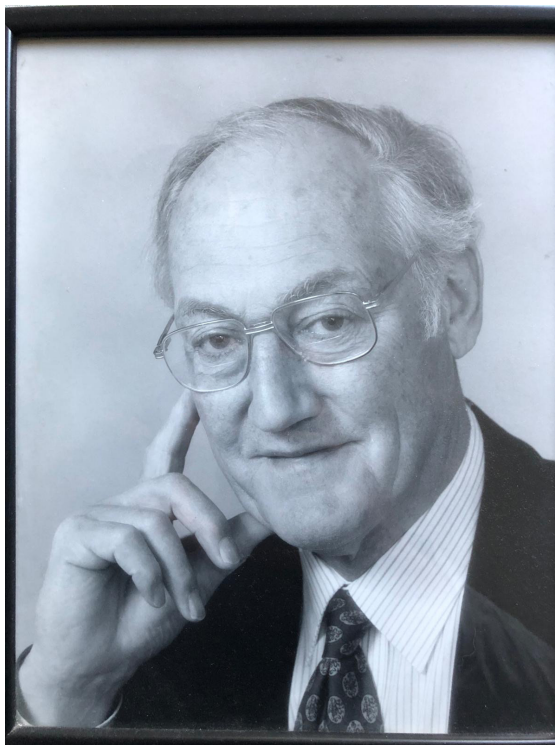


# G

# RAFFHAM

## PARISH NEWS

Issue 352 June 2020 FREE



**Editor 2020:** Rozie Apps (07986 838 987)

**Email:** editor.graffhamparishnews@gmail.com

**Website:** www.graffhamparishnews.org.uk

Magazine printed by Parish Magazine Printing, Northmoor, Whitstone, Holsworthy

**Cover picture:** Richard Davidson

All photos and articles in this magazine are copyright ©Graffham Parish News unless otherwise stated and should not be reproduced without written consent of the Editor.



THE CHURCH  
OF ENGLAND

**Parish of St Giles Graffham with St Peter Woolavington  
St Giles Church Wardens:**

Alan Sargent 01798 867460

Matthew Pitteway 07557 439695

**Priest in charge:**

Reverend Vivien Turner

**01798 867199**

**reverendvivien@gmail.com**

**Church website: stgilesgraffham.org**

Dear friends, another month and the great challenge of our time continues. At the end of May, gradual encouragements to ease lockdown are unfolding and we wait to see what impact this has on controlling the virus. As a society, we wonder what we ourselves can safely do now. We reflect on the difference these past weeks has had on our attitude to life and our confidence to mix socially again, to emerge from the safety of our homes. For myself, I don't want to lose what I've rediscovered about living more quietly, appreciating more wholeheartedly, seeing more vividly the beauty of this world from a Sussex South Downs perspective. 'What is this life if, full of care, we have no time to stand and stare...' My situation is not like that of others though, for whom it is so much harder and bleaker. Balancing people's health needs and economic needs is not easy. We hope and pray it will be managed well.

We cannot but be heartened by the community spirit in Graffham though, as this goes on. So much support and kindness is being shown here. Thank you for coming to your gates as a mark of respect for Roger Mozley RIP and Clifford Hodgetts RIP as their corteges passed through the village. As a result of that first expression of support, a rather last minute marvellous idea to encourage the whole parish community to their gates again on VE75 day resulted in day of celebratory commemoration we will long remember. Thank you to Ginny for inspiring the church to arrange this, to Karin for producing a poster in next to no time, and Ollie and Tom for agreeing to video everyone from your truck. I'm sure there will be pictures in this edition to highlight how good it was.

Though the church is closed, we are developing ways of worshipping together using technology. A Eucharist service is now being live-streamed onto St Giles Church Graffham Facebook page from the Rectory study on Sundays at 10.30am. A daily diary is still continuing on this Facebook page as well, also available directly on the homepage of our website [stgilesgraffham.org](http://stgilesgraffham.org).

We're producing this magazine online once more, in accordance with the Church's direction that home delivering is not yet considered safe. We hope to return to conventional printing as soon as possible. If you are reading and enjoying this edition, please let others know where it can be found.

Every blessing Reverend Vivien

Phone 01798 867199 or email [reverendvivien@gmail.com](mailto:reverendvivien@gmail.com)



# Home in the Garden

---

Just checking in again with an update from my bungalow bunker, I hope you are all well. As I mentioned in last month's article I have been writing a daily wildlife diary (which can be found at [www.sussexwildlifetrust.org.uk/wildlifediary](http://www.sussexwildlifetrust.org.uk/wildlifediary)). Today I'm on day sixty.

Sixty days ago we were told to go home and stay home. I grabbed some bits and pieces from work; a laptop, a trail camera, and drove back to my bungalow and I haven't really been out since. I stocked up on black beans, shaved all my hair off and became extremely anxious about leaving the cul-de-sac. It's weird to think that for the last sixty days I have only made it past the end of my cul-de-sac a handful of times.

As my world shut down and shrank I turned to my garden as a focus away from the repetitive, depressing news. I had the idea that keeping an online diary would force me to write something each day – giving me a commitment and putting some structure into a life where hours and days all started to merge into one. I also hoped it would entertain, educate





and inspire people and provide a distraction in these challenging times. At first people worried that I wouldn't find enough to talk about each day, but the garden has been an endless supply of wonderful wildlife. When I last wrote to you I was on day 30. Since then I have cleared the invasive Pendulous Sedge away from around the pond and allowed the sunlight back in. I've also discovered that my small pond, only a metre or so long, is home to a Grass Snake and that a metre from my kitchen door, just over the wall and under the neighbours fence, a female Fox has been raising eight cubs. I have managed to get some great footage of them with a night vision trail camera. While filming the Fox cubs I was thrilled to also discover we have a Hedgehog in the garden – the first I have seen since we moved here in 2012. On the warmer days I have watched Orange-tip, Holly Blue and Brimstone butterflies, the latter laying her eggs on the Alder Buckthorn bush I planted for her. I was out in my wildflower meadow counting Cowslips in my dressing gown (well, they were in the meadow not my dressing gown) and managed to scare my neighbour. One day I ventured round the corner from the cul-de-sac and bought some horse manure to build a compost heap (for the Grass Snake) but ended up getting into an argument so decided it was better for my blood pressure to stay home. The Ragged Robin and Yellow Rattle has come into bloom in the wildflower patch, the Hawthorn flowers have decorated my native hedge and at night I can hear a Nightingale and a Cuckoo singing out there in the distance. Each Sunday I've been organising a Back Garden Bird Race and people all around Sussex have been birdwatching simultaneously between 10-11. Hundreds of people have been taking part each week (we had over 500 one Sunday!) and its great to know that – while I'm stuck in my own little plot of Sussex – I haven't really been alone.

So now the 'stay at home' restrictions have been loosened I'm still going to stay put for a while longer. There's just too much wonderful wildlife to enjoy in my own back garden.

Michael Blencowe  
Senior Learning & Engagement Officer  
Sussex Wildlife Trust  
[michaelblencowe@sussexwt.org.uk](mailto:michaelblencowe@sussexwt.org.uk)

# VE Day Celebrations

---

The VE Day celebrations were enjoyed by all. How wonderful to see so many people coming together from a distance. The weather turned out to be beautiful and everyone was in good spirits. The bunting and garden decorations really added a sense of community. Thanks to Ollie and Tom for filming the event.

It was a truly joyous occasion at time when we needed it most.

Photos thanks to Colin Barker.





















# Petworth Area Churches Together

## - working together in harmony

Festival Service – postponed until further notice. Fete in the Park – cancelled.

But our Petworth Food Bank continues to provide an invaluable service through Geoff Pye and his team. There are so many people calling on this service now, please keep taking donations to your local collection point (eg the Co-op in Petworth).

In our normal activities everyone had clear ways to serve alongside other members of PACT, and it can be difficult to know what to do now. Instead of the routine activities we're given opportunities to work in new and creative ways, often at a different pace to before. We can be assured that God is still sovereign and He still speaks to us, leading us and guiding us to reach out to others in our world – and His word will always produce fruit, even if it's not obvious at the time.

'Since we are living by the Spirit, let us follow the Spirit's leading in every part of our lives.' Galatians 5:25

'It is the same with my word. I send it out, and it always produces fruit. I will accomplish all I want it to, and it will prosper everywhere I send it.' Isaiah 55:11.

Kate Ayling

[www.petworthareachurchestogether.com](http://www.petworthareachurchestogether.com)

# Is your child spending too much time online?

---

As a parent or someone else with responsibility for a child or young person, you'll be all too aware of the dangers they can be exposed to online. Children and young people are generally curious, sociable and impressionable to one degree or another. Under the right circumstances these are good qualities, but online, they could lead to being bullied, befriended by dangerous people or even lured into internet crime. These are occurrences that happen every day.

However, if you're worrying about your family's health, trying to work from home or concerned about job security during the current situation, there's more chance these things will happen to your child, especially while they have more time on their hands and are spending longer online.

Unless you take the appropriate precautions.

## **Top tips for a switched-on parent**

The Get Safe Online safety experts have put together some expert tips to help you keep the children and young people in your care safe and more aware of these dangers.

Have regular conversations with your child about the positive and negative aspects of the internet in language appropriate to their age. Talk about stranger danger. Get them to show you what they're doing and try it out for yourself. Gain a better understanding of new online technologies and trends. Don't shy away from discussing potential issues, but not in a scary way. Keep it general so as not to get your child curious about specific sites. Check your facts beforehand.

Set boundaries and rules from a young age, such as time limits and what's out of bounds. Draw up an agreement with your child's input to give them a degree of ownership. Lead the way by using your own mobile devices responsibly and at the right time.

Chat with friends, family and other parents about how they help their children to progress and keep safe online. Swap experiences and tips.

Do the tech: apply parental control software and apps on comput-

ers, mobile devices and games consoles, privacy features on social networking sites, safety options on search engines and safe location settings on devices and apps. Turn on your internet service provider's family filters.

If your household is using technology for the first time for home schooling, try to familiarise yourself with the basics of how it works and do what you can to help your child avoid online harms.

Check lower age limits of social networking, picture/video sharing, gaming and other sites and apps. Download apps only from recognised sources like App Store and Google Play. Add your own email address when setting up accounts and apps for your child.

Keep yourself up to date with new game and social media trends, especially those with negative publicity, because they may be violent, encourage gambling or leave the way open for grooming.

Explain and encourage safe searching and websites. Check what your child is watching on streaming sites like YouTube and STEAM.

If your child wants a video call with friends, set it up for them observing the latest safety advice on updating the platform's settings, using passwords and keeping knowledge of the call only within a group of friends they know.

Talk to your child about the consequences of oversharing confidential information or personal details in posts, profiles, messages and chats. Consider what you share yourself: could it embarrass or endanger your children now or in the future?

However well you know your child, ask yourself if they could be carrying out some kind of negative online activity that harms others, even if they do not realise it.

Chat with them about things like bullying, trolling, shaming, creating/sharing fake news and being recruited into cybercrime.

If you're interested in joining Neighbourhood Watch, or want to find out more, visit [www.sussexnwfd.org.uk](http://www.sussexnwfd.org.uk) or send an email to [enquiries@sussexnwfd.org.uk](mailto:enquiries@sussexnwfd.org.uk).

Derek Pratt (Sussex) (NHNW, Administrator, Sussex)



# Graffham Virtual Art Festival

---

Due to lockdown, the 2020 Graffham Art Festival will not be taking place in its usual capacity. Instead, we'd like to share the art with you through the pages of the magazine.

Please do get in touch with Rozie (email address inside cover) if you'd like to include your art in these pages.





Caspian stallion of mine, taken just after a heavy thunderstorm at a ranch in Texas ©Colin Barker



Irises painted in oil ©Sue Hill





# Chichester at home

Groceries to your door



[www.chichesterathome.co.uk](http://www.chichesterathome.co.uk)



Groceries • Meals • Home & Garden

Look after each other  
Stay safe. Stay home. Stay positive

This is an independent, free directory compiled by Sara Watkins of Hopscotch,  
Emily Penny of Becolourful and Gemma Young of Marketing Gem.





[www.chichester.foodbank.org.uk](http://www.chichester.foodbank.org.uk)

## Feeding local people in crisis

Your donations enable us to provide three days of emergency food to local people in crisis. Working with local care professionals to identify those in need, we are able to provide short term relief and support as well as signposting people to organisations able to help solve the longer term problem.

Please help us to feed the hungry by buying some of the following non-perishable food items:

- Tomatoes - (Tinned)
- Tinned custard
- Sugar
- Orange juice (carton)
- Milk (UHT or powdered)
- Fruit - (Tinned)
- Breakfast Cereal
- Meat - (Tinned)
- Vegetables - (Tinned)
- Tuna / Fish - (Tinned)
- Pasta Sauce (Jar)
- Noodles (Dried)
- Tea Bags
- Rice Pudding - (Tinned)
- Chocolate
- Biscuits



Please donate to this food bank by putting any of the items on the list in the covered box in the back of St Giles Church, Graffham.  
Any queries please ring Ann Brown on 01798 867561

### Catholic Church

The Catholic Church of the Sacred Heart, Angel Street, Petworth, and St Anthony and St George, Duncton and The Divine Motherhood & St. Francis of Assisi Midhurst. Parish Priest: Fr Peter Newsam **01798 342 169** email: pp.petworth@yahoo.co.uk

#### Sunday

8.00 Mass at Duncton / 9.30 Mass at Midhurst / 11.00 Mass at Petworth

#### Weekday Masses:

Monday	No Mass
Tuesday	9.30am Mass at Petworth
Wednesday	9.30am Mass at Midhurst
Thursday	9.30am Mass at Petworth 12.00noon Mass at Midhurst Convent
Friday	6.30pm Petworth
Saturday	9.30am Midhurst

**Confessions:** Petworth: Fridays 6.00pm

Midhurst: Saturdays 10.00am

*Occasionally there will be changes but when these occur notices are displayed at the relevant Churches*

---

### Midhurst Methodist Church

Minister: Rev David Muskett **01428 642921**

Sundays 10.00am Morning Worship

Body and Soul worship and lunch 12:30pm 1st and 3rd Wednesdays of the month (except in August)

Toddler and Carer group 10am Thursdays during term times

---

### Society of Friends (Quakers)

2nd & 4th Sundays 10.30am St Ann's, Midhurst

Anna Luttman-Johnson **01798 343333**

---

### Petworth United Reformed Church

Rev. Anne Lewitt, Minister

Secretary: Mrs Maureen Purser **01798 343 102**

Morning Service: Sundays 10.30am

---

### Petworth Area Churches Together

Friday Coffee Mornings At Petworth United Reformed between 10am and 11am – you will be made very welcome. Further information on PACT from Maureen Purser on 01798 343 102 or their website:

[www.petworthareachurchestogether.com](http://www.petworthareachurchestogether.com)



# New VRM on Graffham Common

---

The Sussex Wildlife Trust's Graffham Common reserve has a new Volunteer Reserve Manager – me!

I do not necessarily manage the volunteers nor am I the manager in reserve if the real one does not show up. I am just the local unpaid eyes and ears of the Trust. I make an official visit to the two sites at least once a week, having alerted both the central Trust office and my wife so that they can take the necessary action if I do not return. However, I often walk around informally as I live at Millburgh Hall which lies conveniently between the separate east and west parts of the reserve.

Jenny and I moved to Graffham Common in October 2004 attracted by the prospect of having such a fascinating open space right on our doorstep. We knew we had made the right decision when that autumn, the Common proved to be one of the most abundant sources of fungi that we had known.

Although I rather treasured the tranquil gloom of the coniferous plantations and enjoyed battling through the rhododendron for a glimpse of the Fitzlea Pond, the purchases by the Trust in 2009 and 2010 and the subsequent heathland restoration has been a revelation. There is now a glorious open prospect from the top of Gallows Hill, heather has rapidly colonised the land scraped clear for it, two sorts of sundew are flourishing in the bogs and nightjars have been heard from our kitchen window.

In 2016 I retired from my full-time post as mathematics teacher and Head of IT at Collyer's Sixth-form College in Horsham. I still do some part-time IT work for them, but I have gradually taken on a number of voluntary activities in the local area, the VRM being the most recent and ambitious!

I have always enjoyed natural history and have recorded botanical finds for many years. More recently I have concentrated on fungi. Graffham Common and the downs give me ample scope to indulge my train-spotting propensities, even if, sadly, there are no longer any actual trains passing through Selham station.

Currently the Trust is grazing cattle on the East Common. This helps to keep create variety in the structure of the vegetation and prevent the purple moor grass from dominating. This in turn helps support a greater variety of species, especially the invertebrates that the rest of the food chain depends on. Cattle are good at creating bare mud which is essential for some plants such as the sundews. Volunteers take turns to check up on

them. This is called 'lookering', apparently an old Sussex term. When walking the Common at this time please keep to the paths and keep your dogs under control. Of course, you should bag up and remove what they may drop so that it does not pollute the environment and I don't tread in it!

If you would like to be a lookerer on the Common or join the working parties that supplement the work of the cattle in removing birch, rhododendron and pine, do get in touch at [jonathanHsimons@outlook.com](mailto:jonathanHsimons@outlook.com). The Trust has put most volunteer activity on hold during the current crisis but if you are under 70 you can still do lookering. Watch out for me 'exercising' on the Common when you next go out. We can have a socially-distanced unofficial chat about what you have seen and enjoyed in this wonderful place.  
Jonathan Simons

---

---

## Graffham Calendar 2020

### June

Wed 24      12.30 for 12.45 Empire Hall lunch club

### July

Fri 3      7pm, Recreation Ground Pavilion, Graffham Parish Council meeting.  
Sat 18      Graffham Garden Group Flower Show  
Sat 18-24      Tennis Week

### September

Fri 18      Graffham Parish Council meeting. 7pm, Empire Hall.

### November

Fri 13      Fleetwood Bac, Graffham Empire Hall  
Fri 20      Graffham Parish Council meeting. 7pm, Empire Hall.



## Silver Jubilee

---

Were you a member of the Graffham Garden Group in 1977, the year of the Queen's Jubilee? I recently came across this plaque:

Prunus avium 'Plena'  
Planted by  
GRAFFHAM GARDEN  
GROUP  
JUBILEE 1977



At the time of writing, April 2020 during lockdown, the tree itself is now in bloom but my guess is that few people would realise how it got there as the plaque is now well-concealed. Do you have memories of the planting ceremony or access to the GGG records to say who was there, or, like me, have you just chanced upon it? Mail me directly at [jonathanHsimons@outlook.com](mailto:jonathanHsimons@outlook.com).



## Empire Hall Summer Raffle

Please look out for your raffle tickets which will be delivered to your door. The draw will take place Saturday 18th July.

There are many wonderful prizes on offer, a list of which will be enclosed with your tickets. Due to the cancellation of the Easter Market, the main fundraising event for the hall, the raffle is being held to raise much needed funds. We hope you will help support our village hall in these difficult times.

Many thanks,  
The Easter Market Committee



---

# Graffham Garden Group

## 2020 Programme of Outings

---

### June: Wednesday 3rd

#### Friend's Private Garden in Chiddingfold

A beautiful private garden in Chiddingfold.

Leaving Graffham at 10am.

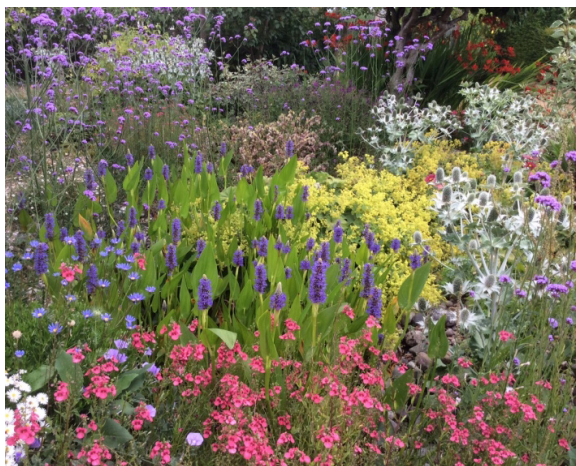
### June: Tuesday 9th

#### Old Erringham Cottage, Shoreham

45 minute drive.

Plantsman's garden set high on the South Downs with panoramic views overlooking the Adur valley. 1 acre with flower meadow, stream bed and ponds, formal and informal planting areas with over 600 varieties of plants. Very productive fruit and vegetable garden with glasshouses.

Many plants grown from seed and coastal climate gives success with tender plants. Leaving Graffham 9.45am, £9 includes tea and biscuits.



### June: 12-14th

#### Graffham Open Gardens

### June: Friday 26th

#### Norney Wood, Shackleford

40 minute drive. This beautiful private garden has been inspired by Gertrude Jekyll and balances the traditional elements of the English garden with a contemporary ecological approach. Leaving Graffham 9.20am, £12.50 includes tea and biscuits.



## **July: Monday 27th**

**Saffrons, Steyning**

45 minute drive.

An artist's garden of textural contrasts and complementary colours. Well-furnished late summer flower beds and a large fruit cage and vegetable beds.

Leaving Graffham 1.45pm, £9 includes tea and cake.



## **August: Tuesday 18th**

**Houghton Lodge, Stockbridge**

1hr 15min drive.

Houghton Lodge and Gardens has been described as 'the jewel of the Test Valley', and is the ideal place to visit, whether your passion lies with Historic Houses or beautiful gardens – or both.

Entrance to House and Garden with talks, refreshments on arrival, fixed lunch, all included £35.70.

Leaving Graffham 9.15am, returning 3pm.



---

## **Graffham Garden Group**

Graffham Garden Group has no option but to cancel the 2020 Flower Show.

With regard to the trips, any GGG trips not able to be undertaken this year will hopefully be rolled forward to 2021. This situation will be reviewed when circumstances permit.



## September: Thursday 24th

Gilberts Dahlias, Romsey

1hr 20min drive

This specialist dahlia grower has a field with 400 varieties of dahlias, every size, shape and colour. We will have a talk and then afternoon tea. Leaving Graffham at 12.40pm, £8.



## October: Monday 19th

Polesden Lacey

1hr 5 mins drive.

National Trust House and Garden

Leaving Graffham at 9am, we will have a tour of the garden at 10.30am and the house at 11.45am lunch optional in their café.

NT members free, group rate for non-members £13.15 as long as we are a minimum of 15.

Please call Carole Kirke 01798 867026 to book any of these trips.

**Trips are subject to change dependent on the Coronavirus advice at the time.**



# Safe Space for victims relaunched in 'lockdown'

---

'Safe Space Sussex' is an online directory of local victim services, created by Police and Crime Commissioner Katy Bourne. In response to the 'lockdown' and concerns raised around crimes like Domestic Abuse, this site has been upgraded and advice has been shared on social media (@SussexPCC) to help victims covertly reach out for help whilst stuck in isolation – search #SafeSpaceSussex.

With the entire country in lockdown, many services have expressed their concerns about victims of crime not feeling able to safely reach out for help. They have seen a decrease in engagement from victims with reports of crimes (like domestic abuse) made to Sussex Police, reducing by around 4%.

It's vital that residents are aware of the support that is still available if they need it. Safe Space Sussex has been equipped with a new search tool so that within 10 seconds, victims of any crime can find the service they need. It also has a 'leave site now' button that users can press to quickly exit the site.

Tailored guidance has been shared across social media community groups on how victims can access the new website covertly, using incognito tabs, as they may be living with their perpetrators during 'lockdown' and their search history may be monitored as a result.

Victims can also covertly let Sussex Police know they are in danger. The '55' technology is in place for those too scared to speak, to alert a call handler to the fact they need help by pressing 55 on their mobile phone once they've dialled 999.

There is still help and support available for all victims of crime during the Covid crisis.

If you find yourself in an emergency where you think you or others may be in immediate danger dial 999. Sussex Police are always there for you when you need them. Don't suffer in silence.

If you would prefer not to contact the police you can report a crime anonymously via Crimestoppers online: <https://crimestoppers-uk.org/give-information/forms/give-information-anonymously> or by calling: 0800 555 111

[www.safespacesussex.org.uk](http://www.safespacesussex.org.uk) has all the information on support services who can help any victim of crime across Sussex.

# Thank You For Being An Angel

In December, we launched our 'Be An Angel' fundraising campaign to help balance the books and save St. Giles'.

Since then, 20 new Angels have signed up to our Parish Giving Scheme. We now have 40 Angels in the village who are doing this – as well as many others who choose to give their support in different ways.

Thank you all – it makes a huge difference, and we are now much, much closer to balancing the books.



## Can We Find Twenty More Angels?

Unfortunately, our regular donations still do not cover our regular expenses. If we can find twenty more Angels, we can meet this target. Could you be one of them?

## Graffham Without St. Giles'

Unless we can balance the books, St Giles' future as an independent parish is in doubt. Even if you are not a regular worshipper, it's hard to imagine Graffham without St. Giles':

- Without somewhere to come together at Easter, Christmas or Remembrance Day,
- Without somewhere for important family occasions like Christenings, Weddings and Funerals
- Without our vicar to support the elderly, lonely or vulnerable in our community

## Be An Angel Your Way

### Set Up A Regular Donation

Pick up a form from the Church or Village Shop and post it in the stamped addressed envelope provided.

### Make A One Off Donation

Drop your donation off at the Church or at the Vicarage. Cheques should be made payable to St. Giles' Church PCC (Check)

### Give Your Time

There are lots of ways to support the church from flower arranging, to cleaning or running a fundraising event.

## Bless You For Being An Angel

# Elderflower Sparkling Wine Recipe

You will need:

- 15 sprigs of elderflower
- 2 litres boiling water
- 6 litres water
- 1 kg sugar
- 3 lemons, peel sliced into strips
- 5g of champagne yeast

Muslin cloth

10 litre container

Funnel

2 litre plastic bottles (x4) or champagne bottles



1. Clean elderflowers by removing dead flowers, bus, cobwebs etc. (Do not wash.)
2. Dissolve the sugar in the 2 litres of hot water and leave to cool.
3. Once sugar syrup is cool, pour into 10 litre container with the 6 litres of water, the lemon peel strips and the juice of one of the lemons. Add the elderflowers and yeast. Give a good stir and cover with muslin cloth.
4. Leave to ferment for 3-4 days at room temperature, stirring every day. You will notice bubbles and a fizz as fermentation begins.
5. Now it's time to decant. It's safest to use plastic bottles, as sparkling wines can make the bottle expand due to carbon dioxide. However, you can use champagne bottles (which have the indent in the base) with a cork and cage.
6. Using your funnel and the muslin cloth, pour your fermented liquid into your bottles. Tightly screw on lids and leave for a few days. This is the second stage of fermentation, which gives the fizz to the wine so pop your bottles somewhere safe incase they explode. A shed or garage can be a good dear, with a cardboard box over the top to reduce any sticky mess should the bottles explode.
7. It should only take a couple of days for the second fermentation stage but fermentation will stop if you place the bottles in the fridge or a cold room. Check your bottles daily and let out any gas if you need to.
8. Enjoy!



## £60,000 to good causes during lockdown

---

Sussex Police has given more than £60,000 to charities and good causes in the county during the Covid-19 lockdown.

The money has come from the Police Property Act Fund (PPAF) – a pot of money made up from the sale of found property and from property confiscated by order of the court and then sold.

The main aim of the fund is to support local projects undertaken by voluntary and charitable organisations that solely benefit the communities of Sussex.

Since April 13th, Sussex Police has dished out £60,000 to 78 groups that have been providing support for people during the coronavirus pandemic. One of those to benefit is Brighton-based Volunteering Matters, which has been supporting the elderly community during lockdown by doing their shopping and keeping them entertained.

The group, which received a £1,000 grant from Sussex Police, also runs regular sing-along sessions which have been described as ‘the highlight of the week’ and ‘an escape from day-to-day life’ by those who take part.

Other donations made by Sussex Police include £1,000 to Whitehawk Food Bank; £1,000 to St Wilfrid’s Hospice in Eastbourne; £1,000 to Sussex Homeless Support; and £5,000 to FareShare, which fights hunger and food waste by redistributing surplus food to frontline charities.

St Peters Church in Brighton has also received £2,000 from the force, while £1,500 was given to the Matthew 25 Mission supporting vulnerable adults in Eastbourne.

Grants of £1,000 were also given to Fare Divide in West Sussex, which runs community fridges in a bid to save food from landfill and improve access to food for the community, and Heads On, a Sussex Partnership NHS Foundation Trust charity supporting those with mental health issues.

Smaller donations of £500 were given to #NHSAngels and Heroes, an organisation making scrubs for NHS doctors and nurses; Lewes Coronavirus Volunteers at Trinity Church Lewes; Mid Sussex Voluntary Action; Friends, Families & Travellers; and Stonepillow (see photo), which supports the homeless and rough sleepers in Arun and Chichester.

Grants of just under £500 have been handed out to the Brighton Inter-faith Contact Group, and The Hangleton & Knoll Project.

Inspector Adele Tucknott said: “There are so many wonderful charities, organisations and community groups in Sussex that have gone the extra mile to help others during the coronavirus pandemic.

“That support ranges from providing food parcels and clothing, to emotional support and keeping people entertained in an effort to tackle loneliness during lockdown.

“We are delighted to be able to give out these grants to help these kind-hearted volunteers help others, including some of the most vulnerable in our communities, at this most difficult and unusual of times.”

A large portion of the money in the Police Property Act Fund comes from the Sussex Police eBay Store, which opened in October 2015 and has now sold more than 30,000 items, generating sales of over £925,000.

The online store has a mixture of new and used items, and tries to sell as much as possible to avoid potentially reusable items going to landfill.

Items commonly sold include everything from video games consoles, bikes, tools and laptops to clothing, jewellery, cosmetics and perfumes.

The most expensive item ever sold on the page was a vintage gold Rolex Oyster Precision watch, which sold for £8,100 back in 2018.

A very popular item recently has been a range of new large jar Yankee Candles, of which the force originally had 300 to sell. Some still remain available for a fixed price of £19.99.

To view the Sussex Police eBay Store, visit **[www.ebay.co.uk/str/sussex-policepropertydisposals](http://www.ebay.co.uk/str/sussex-policepropertydisposals)**

To find out more about the Police Property Act Fund, or to make an application for funds, visit **[www.sussex.police.uk/police-forces/sussex-police/areas/au/about-us/charity-and-community/police-property-act-fund-ppaf](http://www.sussex.police.uk/police-forces/sussex-police/areas/au/about-us/charity-and-community/police-property-act-fund-ppaf)**





Empire Hall  
The Street, Graffham  
West Sussex, GU28 0QE

Bringing film to Graffham  
Raising funds for the Empire Hall

## Graffham Empire Movies 2020 and 2021

Covid-19 restrictions allowing, we plan to be back in September, bringing some of the latest and greatest blockbusters to the big screen in the Empire Hall. As usual, we are looking at screenings once a month during the autumn, winter and spring, starting in September and with a break in December.

The committee will convene in the coming months – remotely, if required – to agree the programme.

It will be a difficult decision, with some marvellous movies released recently, including:

*Little Women*, the latest beautifully shot adaptation of Louisa May Alcott's classic novel recounting the lives, loves and losses of the March family in and after the US civil war, with barn-storming performances by Saoirse Ronan, Emma Watson and Florence Pugh.

*Emma*, another remake, this time of Jane Austen's beloved comedy, with Anya Taylor-Joy in the title role, supported by the likes of Bill Nighy and Miranda Hart.

*1917*, Sam Mendes' multi-award-winning World War I tale of two soldiers assigned to race against time and deliver a message that will stop hundreds of comrades from walking straight into a deadly trap.

*The Personal History of David Copperfield*, a modern take on Charles Dickens' classic, directed by comedy genius Armando Iannucci and starring Dev Patel, Hugh Laurie, Tilda Swinton, Peter Capaldi, Paul Whitehouse and Ben Whishaw.

*Military Wives*, based on the true story of a group of women who form a choir and quickly find themselves at the centre of a media sensation while their partners are away serving in Afghanistan, with Kristin Scott Thomas leading the cast.

*Parasite*, the first non-English-language film to win the Best Movie Oscar – could Graffham be ready for a film in Korean?!

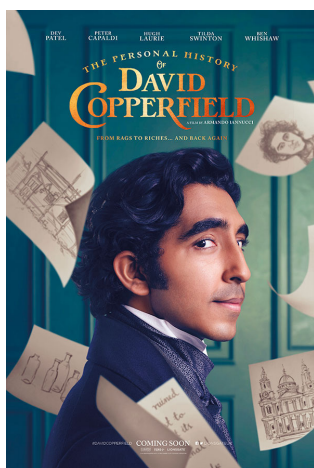
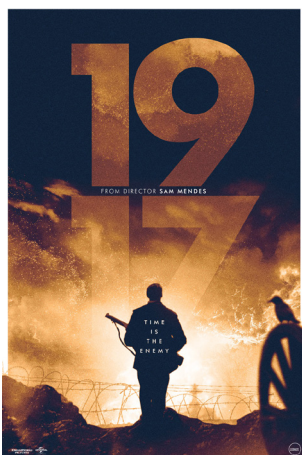


And coming soon is the new James Bond, *No Time To Die*.

Which would you most like to see? Or maybe you have other suggestions. Let us know at [graffhamempiremovies@gmail.com](mailto:graffhamempiremovies@gmail.com). Whichever make the final cut, it is going to be a great season! Watch out for the eventual selection and dates in future editions of Graffham Parish News and the Graffham Noticeboard Facebook page.

Meantime, stay safe and sane! Looking forward to see all movie-goers soon!

Michael Blunt  
Chairman, Graffham Empire Movies



Graffham Parish News is always on the look out for exciting news, features, articles and photos. If you have something uplifting for the Graffham residents, through this time of lockdown, we would love to hear from you.

If you would like to contribute to the magazine please email the editor, Rozie Apps on:

**editor.graffhamparishnews@gmail.com**

The deadline for the next issue (July) is 15th June 2020.

**DORSET HOUSE SCHOOL**  
**Prep School for Boys and Girls**  
**from Reception - Year 8**



**'EXCELLENT' IN ALL AREAS**

*ISI INSPECTION SEPTEMBER 2018*

**Mini-bus available**

**After school care and activities**  
**Regular scholarships to senior schools**  
**Outstanding Pre-School on site**

**The Manor • Church Lane • Bury**  
**West Sussex • RH20 1PB**  
**www.dorsethouseschool.com**  
**01798 831456**

## **EASTWOOD STUD FARM**

GRAFFHAM, PETWORTH

Est. 1983

[www.eastwoodstudfarm.co.uk](http://www.eastwoodstudfarm.co.uk)

We have vacancies for

**Full and Part**  
**Liveries**

Please call Jane on

**07593 683976**

Or visit the website

## **Brook Barn** **Bed & Breakfast**

Clara and Simon Jollands

**01798 867356 or 0794 7003441**

**clara@jollands.co.uk**

Brook Barn • Graffham • West Sussex • GU28 0PU

**www.brookbarn-graffham.co.uk**



## **Garden & Countryside** **Maintenance**

Lawn Mowing, Strimming, Hedge  
Cutting, Garden Clearance  
Fencing & Gates, Tree Work,  
Logs, etc.

Contact Sam Trott on:

**07595 429625**

Email:

**samtrott2189@gmail.com**

## P & P DECORATORS

OVER TWENTY YEARS EXPERIENCE IN ALL  
TYPES OF  
PAINTING AND DECORATING

*Friendly professional service -  
Excellent references*

VERY COMPETITIVE PRICES  
FREE ESTIMATE AND ADVICE

**David**

Tel: 01730814269 Mob: 07810246126  
email: pwdenyer@btinternet.com



**"A CUT ABOVE"**

**Tree Surgery & Hedge Cutting**

By

**Matt Harridge**

All aspects of tree work, hedge cutting and garden maintenance. Fully qualified.  
Fully insured. Free Quotations.

Tel: 01730 859135. or (m) 07903 034719



**Individually crafted, beautiful buildings**

**Energy efficient extensions,  
homes, offices and studios.**

**Planned, designed and  
sustainably built by Artizans.**

**Call Dylan and Liza: 01730 815885  
builtbyartizans.co.uk • #builtbyartizans**

## SMART CARS

**PRIVATE HIRE/TAXI SERVICE**

**Executive Salon & 6 Seater Cars  
Chauffeur Service**

**Professional, Personal & Reliable  
Accounts & Corporate Business Welcome  
Airport, Docks & London Runs  
Same Day Courier Parcel Service**





**"Any time, any place, anywhere"**

**FOR QUOTES & BOOKINGS  
PLEASE CALL DOMINIC**

**0800 44 88 030 / 07823 559099**

**www.smartcars.uk.com**



-  **Help with smartphones, tablets, computers,  
music & TV systems.**
-  **System tuneups & upgrades for your sluggish  
computer.**
-  **Improve your computer skills with private  
tuition.**
-  **Help with broadband & wifi - upgrade your  
connection and get wifi everywhere you need it.**

**Friendly & Impartial  
Tech Support  
that comes to your  
home or office**



Contact Olly Stedall:

help@switchedon.support **01428 748 489**

**www.switchedon.support**

## ENGLISH TUITION

**Language and Literature  
KS4/GCSE, KS3 and Common Entrance**

**Fully qualified English teacher with over 20  
years' experience**

**Graffham based; will travel short distances**

**CV and References available**

**Contact Karen:  
07751 829098  
karencasey6@hotmail.com**







**Wood-Be  
Ltd**

Tree surgery - Joinery - Landscaping

Kiln Dried Logs

07904 306977 / 01730 601358  
[enquiry@wood-be.co.uk](mailto:enquiry@wood-be.co.uk)

## **Norwood Contractors GARDEN MAINTENANCE**

Grass and Hedge cutting,  
Pruning, weeding,  
Planting etc.....

**ENQUIRIES:**

**01798 867 338**  
**Or 07973 370 727**

## **Curtain Making Service & Soft Furnishings**



Handmade by Carole Jewell  
01730 815144  
07764 233234  
[carolethecurtainmaker@live.co.uk](mailto:carolethecurtainmaker@live.co.uk)

## **DEEP TISSUE, REMEDIAL AND THERAPEUTIC MASSAGE**

**Marilyn Ridgway**

ITEC, MMTI, MCNHC

**01798 344550**

[andmar2@btinternet.com](mailto:andmar2@btinternet.com)

## **ANGUS STUDD COUNTRYSIDE SERVICES LTD**

**TREE SURGERY  
CLUSTER FLIES  
HORNETS  
WASPS**

**MOLE CATCHING  
"NO MOLE, NO FEE"**

Telephone: **01798 860983**

Mobile: **07828 134086**

[www.ascountrysideservices.co.uk](http://www.ascountrysideservices.co.uk)

## **West Sussex Logs**

Logs cut to size,  
all seasoned timber  
Two days for delivery  
once ordered

Contact:

01730814751  
07950035997

## Water Pipe Repair Services

Allan Marsh

07470 440836

Water pipe repairs  
Water pipe renewals  
Plumbing repairs  
Water leak detection  
Lead pipe replacement  
Drain repairs  
Outside taps fitted  
Sinks, baths and toilets  
Driveway and footpath repairs



*Anna Shawcross*

— OSTEOPATHY —

Now at Empire Hall, Graffham  
01798 867523 | 07971 204287  
hello@annashawcross.co.uk | 



**Success**  
No greater gift

## Maths tutoring

11+, 13+, Scholarship, GCSE, A Level, IB, Pre-U  
[www.escry.com](http://www.escry.com)  
[simon.mitchell@escry.com](mailto:simon.mitchell@escry.com) 07850 125 519

## **CLEAR ALL** PEST CONTROL

Fully qualified professional country  
services

Specializing in Hornets, Wasps, Moles,  
Rats, Mice & Flies/Cluster Flies  
[www.clearallpestcontrol.com](http://www.clearallpestcontrol.com)

Phone Dean on:

07768 986 338



## **Caytons Limited**

Stuart A Hail  
Specialist Oil Fired  
Heating Engineer

**Boilers  
Agas**

**Servicers  
Breakdown  
Installation**

Tel 01798 344 213  
M 07779 11 33 43

Email: [caytonsltd@gmail.com](mailto:caytonsltd@gmail.com)

## **CLEAN SWEEP**

## **CHIMNEY SWEEPING**

G. Strowbridge  
26 Elmleigh  
Midhurst  
W. Sussex GU29 9EZ  
Tel. 01730 812011



**CARPET & RUG DRY CLEANING**  
**UPHOLSTERY & CURTAIN CLEANING**  
**STAIN PROTECTION**

**TEL: 01730 814 965**  
[www.magnadrysouthern.co.uk](http://www.magnadrysouthern.co.uk)



MAGNA DRY SOUTHERN

**Free Estimates ~ Fully Insured**



Prompt and Friendly  
Telephone Fran or Dean on

**07768 986 338**

Based in Lickfold  
Est. 1990

[prismwindowcleaningltd.com](http://prismwindowcleaningltd.com)

*KLE Decorators Ltd*

*Finest Quality Decorating*

All Areas of Painting & Decorating  
Undertaken.

Finished to the Highest of Standards.

*Kyle Edwards*

[kledcorators@gmail.com](mailto:kledcorators@gmail.com)

**07880 317071**

THE  
**COUNTRY  
HOUSE**  
COMPANY

Sales | Lettings | Management

**02392 632 275**

[COUNTRYHOUSECOMPANY.CO.UK](http://COUNTRYHOUSECOMPANY.CO.UK)

**ROGER GUNN**  
**GARDEN MACHINERY**  
**SHOWROOM AND WORKSHOP**



Fast Friendly Service  
Competitive Prices  
Collection & Delivery  
Available



**[www.rogergunn.co.uk](http://www.rogergunn.co.uk)**

Telephone 01243 786003

or 07979 752242

located between Lavant and West Dean



Roger Poat & Partners  
Funeral Directors &  
Monumental Masonry  
Consultants

Duck Lane, Midhurst, West Sussex GU29 9DE

**Telephone 01730 812094**

(24 Hours)

- Pre-need Funeral Plans
- Private Chapel

**Email: [info@rogerpoat.co.uk](mailto:info@rogerpoat.co.uk)**

Michael Miller & Partners Ltd



## HELEN'S AIRPORT CARS

"With US it can often cost less than rail or airport parking"



**01243 820820**

**Book Online Now** [www.airporttaxis.co.uk](http://www.airporttaxis.co.uk)

24 Sudley Road, Bognor Regis. PO21 1ER



## P. TUPPER Carpenter & Joiner

Lilac Cottage  
Grafham  
Petworth

Tel: 01798 867256

## Jane Bellinger

Professional Cordon Bleu Chef

Dinner Parties Luncheons

Weddings Canapes

Picnics Buffets

Afternoon Teas Desserts

[info@janebellinger.com](mailto:info@janebellinger.com)

[www.janebellinger.com](http://www.janebellinger.com)

St. Anne's Cottage, The Street,

Bury, RH20 1PA

Tel 01798 839433

## Martin Taylor Quality Carpenter, Joiner and Cabinet Maker

*Fully fitted and freestanding furniture a  
speciality. Cupboards, Wardrobes,  
Radiator Covers, Fitted Kitchens.*

*Design service available.*

Mobile 07704 524252

Grafham 01798 867471 (home)

[martin@martintaylordesign.co.uk](mailto:martin@martintaylordesign.co.uk)

[www.martintaylordesign.co.uk](http://www.martintaylordesign.co.uk)

## MacDonald Oates LLP SOLICITORS



Leading Client Service

Residential Property  
Family Law  
Mediation Services  
Wills, Probate & Trusts  
Litigation & Dispute Resolution  
Employment Law  
Company & Commercial  
Commercial Property

Petersfield Office  
Tel: 01730 268211 | Fax: 01730 261232

Midhurst Office  
Tel: 01730 816711 | Fax: 01730 816016

[www.macdonaldoates.co.uk](http://www.macdonaldoates.co.uk)

## Southdowns Chiropractic

Jemma Langford DC

Patrick Thomas DC

Treating all musculoskeletal conditions related to the spine, along  
with hips, knees, shoulders and many soft tissue injuries.

We also offer a range of other treatments with our team of  
complementary therapists

Medical Herbalist    Foot Health Professional    Acupuncturist  
Sports Massage Therapist    Psychotherapist

Tel 01798 345145

The Old Bakery Golden Square Petworth West Sussex GU28 0AF  
[www.southdownschiropractic.co.uk](http://www.southdownschiropractic.co.uk)



THE MARTIN SEWELL  
BUILDING COMPANY

An award-winning Chartered Building Company that has worked in the Sussex area since 1985, gaining a well-deserved reputation for professionalism, reliability, high quality craftsmanship & project management skills.

Experienced in all types of building projects, from large commercial to the sensitive renovation of listed buildings, bespoke new-builds or extensions & refurbishments.

Telephone 01243 542056  
Email [martin@msbc.uk.com](mailto:martin@msbc.uk.com)  
[www.msbc.uk.com](http://www.msbc.uk.com)



# HOO.LI.

Design | Marketing | Words | Web

Call Julia and Rachel on:  
**01730 816484**

[hello@hooli.co.uk](mailto:hello@hooli.co.uk)

Nº1 West Street, Midhurst  
[hooli.co.uk](http://hooli.co.uk)

## Southern Counties Tree Services

*Skilled Surgery in all aspects of Tree Care*

- \*Hedge trimming
- \*Landscaping
- \*Tree reduction
- \*Logs supplied

Tel: 01243 814854  
Mob: 07774 012961

[barneslogs@gmail.com](mailto:barneslogs@gmail.com)

## Matt Wheatley Local Electrician

Part P Approved Contractor  
*Fully Insured*

For prompt & friendly  
service please call:

**01798 860 799 or  
07976 465 974**

email:

[mattwheatley1971@btinternet.com](mailto:mattwheatley1971@btinternet.com)

## need help with your pc? Clive Way BA<sup>hons</sup> Computing

The friendly professional service for your home pc, laptop and other device nightmares.

I am now based in Wales.  
But fear not –

I can still help you with many problems by remotely accessing your pc, mac, phone, ipad or other electronica.



tel: 0791 7766254

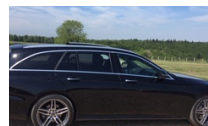
email: [cliveway@yahoo.com](mailto:cliveway@yahoo.com)

## Pescadora's Private Hire Airports - Weddings - Goodwood - Fontwell

Graffham based executive private hire

Call now for a free quotation!

8 seater available by prior agreement



07467 521760

[Pescadorasprivatehire@gmail.com](mailto:Pescadorasprivatehire@gmail.com)

[www.pescadorashire.co.uk](http://www.pescadorashire.co.uk)

All Saints Chapel Trust Robert Knight		01798 867 537
Badminton Club David Rowlands		01798 861 609
Bees/Swarms Wisborough Green Beekeepers:	Tom Moore	01798 343 470
	mob.	07984 606 214
	eves.	01798 867 048
Murray West (local beekeeper)		0344 848 7969
Citizens Advice Bureau		01243 785 166
Chichester District Council Enquiries		01798 342452
District Councillor Alan Sutton asutton@chichester.gov.uk		01243 534 734
Dog Warden Office		01243 785 339
Emergency Office		01798 867 567
Empire Lunch Club Sarah Lydiard-Wilson		01798 867 386
Foresters Arms		01798 867324
Friends of Graffham & Duncton School		01798 867199
Bellringing Point of Contact Reverend Vivien		01798 867619
Graffham Archives Robin Brind		
Graffham Bowls Club		
	Chairman: Sheila Allen	01798 342 869
	Secretary: Liz Pegram	01798 867770
Graffham Cricket Club	Bill Barrett	01798 867 113
Graffham Down Trust	Chairman: Jim Kirke	01798 867 026
Graffham Empire Movies	Sally Blunt	01798 867346
Graffham Festival Committee	Simon Mitchell	01798 867 519
	Richard Davidson	01798 867 232
Graffham Garden Group	Martin Buckley	01798 867 234
Graffham Health Support Association	Chair Alison Davidson	01798 867 232
Membership Secretary	Nicky West	01798 867048
Hospital Transport & Prescription Collection	Ann Rowney	07391 802541
	ann.rowney@icloud.com	
Loan of Equipment	Shirley Behan	01798 867 265
Graffham Nursery c/o School Office		01798 867 324
Graffham Tennis Club	Chairman: Beetle Clay	01798 867 035
	Membership: Richard Gyles	01798 867 484
	Coaching: Emma Amin	01798 867 063
Graffham Village Shop Association	Chair: Hugh Brown	01798 867 561
	Treasurer: Steve Dover	07770 499223
	Secretary: Stuart Mathie	01798 867519
Andrew Griffith, MP Arundel and South Downs		
Katherine Maud Guillod Fund	Andrew.griffith.mp@parliament.uk	
Long Bostle Downland Preservation Society	c/o Graffham PC Clerk	01798 867 020
Lodsworth Croquet Club Secretary	Celia Tinker	01798 867 287
Midhurst & Petworth Observer	John West	01798 861 515
National Trust (Lavington Common)	Nikki Jeffery	01243 534163
Neighbourhood Watch	Fiona Scully	01730 816 363
Oil Syndicate	Michael Crickmay	01798 867 486
Petworth Foodbank (emergency food supplies)	Derek Bradnum@aol.com	
Seaford College Office		07501 921 617
Sussex Wildlife Trust (SWT)		01798 867 392
Three Moles	Jane Willmott	01730 810363
Thursday Club	Ollie Boulton & Tom Richardson	01798 861 303
	Secretary: Diana White	01798 867 405
West Sussex County Council	Treasurer: Diane Bellis	01798 867 444
County Councillor	Enquiries	01243 777 100
White Horse	David Bradford	01243 777 100
		01798 867 331



# Directory

## DOCTORS

The Surgery, Petworth 01798 342248  
 Riverbank Medical Centre, Midhurst 01730 812121  
 Haslemere Minor Injuries Unit 01483 782334

## POLICE

In Emergency dial 999  
 Non-Emergency dial 101

Email: 101@sussex.pnn.police.uk

## Recreation Ground Committee

Treasurer Bernard Bayly 1798 867 042  
 Bookings Secretary Peter Carr 01798 867148  
 graffhamrecpavilion@gmail.com

## East Lavington Parish Council

Chairman Charles Britton  
 charles.britton@eastlavington-pc.uk  
 Clerk Amy Harte 07889 979820  
 eastlavingtonpc@gmail.com

## Empire Hall Committee

Treasurer Carole Sargent 01798 867 460  
 Secretary Carol Tompkins 01798 867 773  
 Bookings Secretary Eira Ashby 01798 867 297  
 Hall Promotions Liz Nicholson, liz.empirehall@gmail.com

## Graffham Parish Council

Chairman John Uphill uphillgpc@gmx.co.uk 01798 767373  
 or 020 7730 2480  
 Clerk Tracy Rowe graffhampc@gmx.co.uk 01798 867 020

## Graffham Parish News

Editor: Rozie Apps editor.graffhamparishnews@gmail.com 01798 867 065

## Graffham Parochial Church Council (PCC)

Rector Reverend Vivien Turner 01798 867 199  
 Church Wardens Matthew Pitteway 07557 539695  
 Alan Sargent 01798 867 460  
 PCC Secretary Diane Bellis 01798 867 444  
 Treasurer graffhampcctreasurer@gmail.com Yvonne Butterick 07808 781 510

## Lavington Park Federation

Graffham Infant School Office 01798 867 324  
 Duncton Junior School Office 01798 342 402  
 Friends of Graffham & Duncton School 01798 867 324

## Graffham Village Shop

Jeeva and Vasu 01798 867 700

BURST WATER MAINS (Southern Water)

0800 820 999

POWER CUTS (Scottish & Southern Electric)

0800 0727 282

Defibrillator at the Empire Hall CODE: C240Z

# PETWORTH PRIVATE HIRE

TAXI SERVICES

INFO@PETWORTHPRIVATEHIRE.CO.UK

WWW.PETWORTHPRIVATEHIRE.CO.UK

T: 0800 009 6141

M: 07971 082333

AIRPORT TRANSFERS  
LOCAL AND LONG DISTANCE



## Delivering service, quality and creativity to your event

With over 30 years in business and an esteemed reputation in West Sussex and surrounds, we pride ourselves on excellent personal service. Along with new ownership, we're delivering creative event management ideas to enhance our offering.

Fixed frame marquees are modular, with no centre poles or guy ropes making them the most flexible form of marquee. We can cater for the largest numbers of guests – the strength and durability makes them the best marquee available for cold and wet weather.

### **INTRODUCTORY OFFER\***

**10% DISCOUNT ON FIRST TIME HIRES\*,  
JUST QUOTE 'BIG TOP 19' ON ENQUIRY.**

\*TERMS AND CONDITIONS APPLY

01403 820 020 or 07770 444 401  
[www.petworthmarqueehire.co.uk](http://www.petworthmarqueehire.co.uk)

SUSSEX | SURREY | HAMPSHIRE | LONDON



**PETWORTH  
MARQUEES**



# JACKSON-STOPS

PROPERTY EXPERTS SINCE 1910

Please contact us for a confidential market appraisal

## MIDHURST

Market Square, Midhurst, West Sussex, GU29 9NJ

---

01730 812357

[midhurst@jackson-stops.co.uk](mailto:midhurst@jackson-stops.co.uk)

[jackson-stops.co.uk](http://jackson-stops.co.uk) @ f t