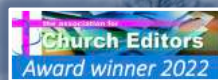


GRAFFHAM PARISH NEWS

ISSUE 384

FREE

FEBRUARY 2023



Town vs gown hockey tradition returns

Revd Vivien marries her youngest son



On the cover: Members of the scratch Graffham hockey team are all smiles after taking on Seaford College just after Christmas, resurrecting the traditional town versus gown matches of days gone by. Full story and many more pictures on pages 26 and 27.

Pictures by © Colin Barker.

Contributions and contacts: We're always pleased to hear from you at editor.graffhamparishnews@gmail.com

- Michael Blunt (right) 07711 997487
- Bill Barrett (left) 07443 501091
- Philippa Sanders 07853 921825

Deadline for March edition:

10 February.

Printed by Parish Magazine Printing, Holsworthy, Devon EX22 6TD.

Graffham Parish News is published and distributed free each month to every household in Graffham and East Lavington by the Parish of Graffham with Woolavington.



Please support us: If you enjoy reading this magazine, then please make a contribution towards its costs through a monthly or one-off online donation – just point your phone camera at this QR code or go to bit.ly/GPN-donation



Archives: Back copies can be viewed online at bit.ly/stgarchive1

Subscriptions: If you live outside the parish, you can receive copies by mail by taking out an annual subscription for £36. Contact the editors for full details.

Advertising: We love our advertisers! If you are interested in being one of them, please contact Philippa Sanders (below) or email ads.graffhamparishnews@gmail.com

Copyright: All content is © Graffham Parish News unless otherwise stated and may not be reproduced without the editor's written consent.



Writing from the Rectory: Backwards and forwards

As always, there's a backwards and forwards element to my magazine letter, as I put 'pen to paper' early each month projecting thoughts not to be read until the next. It's particularly appropriate in a month (as I write) named after Janus, the Roman god of doors, gates and transitions who had two heads enabling him to look backwards and forwards at the same time.

I'm thinking like this particularly because of a task set before me to write a review of the past year called the Trustee Annual Report, or TAR for short. Every parish is obliged to do this annually, to justify its charitable status. It's both challenging and rewarding not just to cast our mind back over the past year

► *Continued on next page*

The Revd Vivien married her youngest son a few days before Christmas – officiating at Sam Turner's wedding to Sisley White.

The ceremony was held at All Saints' Church, Banstead, in Surrey, which the Turner family attended before Vivien was appointed Priest in Charge here at Graffham some five years ago and where she had served as a deacon for four years and a reader before that.

Sam and Sisley both live in Banstead parish. He is a police detective sergeant and she works as a food writer with her own foodie website sewwhite.com. She also set up St Giles' website.



Priest in charge: Reverend Vivien Turner
01798 867199 hello@stgilesgraffham.org

Churchwarden: Ginny Barrett 01798 867113



stgilesgraffham.org



@stgilesgraffham

► *Continued from previous page*

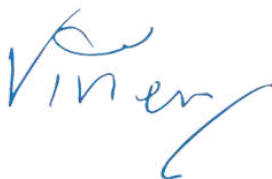
to remember the important features of church life but set it down in writing and pictures – including all-important evidence of the public benefit we provide from messages received from parishioners. It's worth it to be able to say "Gosh, did we do all that?" and thank God for the privilege of service in all the ways set out.

We look forward, too, as a church. Our Parochial Church Council (PCC) held a special January meeting to plan for a new year and beyond, to consider what we can be doing next to maintain and improve our church for welcome, worship and service to our parish and beyond. As the year unfolds, we'll report on our plans in this wonderful magazine.

In all our reviewing and planning we're appreciative of the generous support we receive from this community, without which no reflection on, or projection of parish ministry could happen. Doing so, we make visible expression of people's kindness here, to show what God means, what love means, and the power this has to bring life and hope, the most forward-looking attitude any of us can bring to our community and our world. So, thank you for reading and for sharing in what we do. As we thrive together here, so love thrives.

Family Worship is a family-friendly service on the third Sunday of each month. In January we highlighted John the Baptist, another person who stands spiritually in a 'backwards and forwards' place, reminding us of the prophet Elijah of long ago and pointing people forward to Jesus: "Prepare ye the way of the Lord!" We're looking forward now to our next Family Service on Sunday 19 February at 10.30am. Please make us part of your regular monthly family routine!

Farewell, Bun Last month we were also glad to offer thanksgiving for the life of Diana Paine (Bun), with her husband Lawrence much-valued long-standing residents of Ladywell Cottage, and faithful servants of this church. We offer Lawrence and his family all our love and condolences, with gratitude for Bun's life well-lived. May she rest in peace and rise in glory (see also page 6).



Reverend Vivien

Swap seeds and support an African orphanage

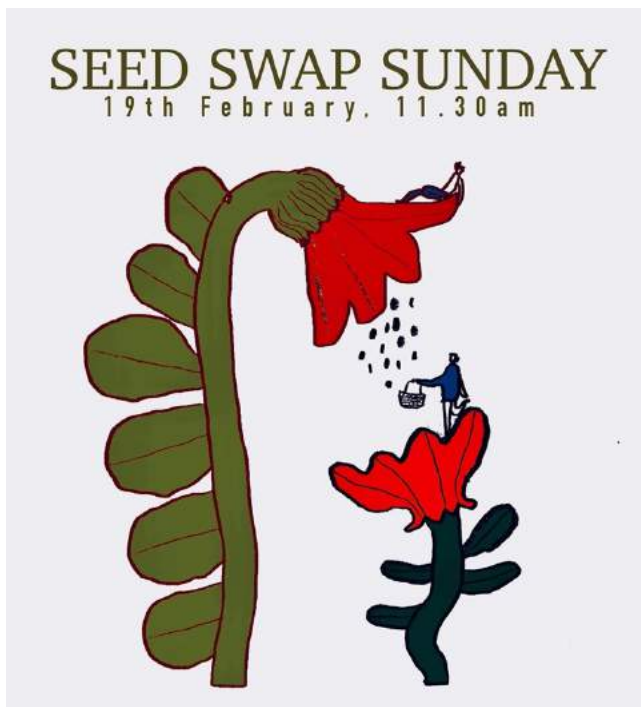
A 'seed swap' is to be held on Sunday 19 February at St Giles at 11.30 am, directly after the family service in the church, which starts at 10.30 am. All are welcome to the service and/or the seed swap!

If the weather is dry the seed swap will be outside in the churchyard. Refreshments will be available.

If you bring seeds to swap, please make sure they are clearly labelled.

There will be a collection in aid of an orphanage in Tanzania where the children's Christmas dinner was paid for by a generous donor from Graffham.

Any enquiries or offers of help, please contact Ginny Barrett on 01798 867113.



The Tanzanian orphanage that will be supported by the seed swap collection.
February 2023

Away in manger, with sheep, goats and donkeys

St Giles became something of a manger for the church's packed Crib Service on Christmas Eve afternoon, attended by scores of adults and dozens of children along with pairs of sheep, goats and donkeys besides dogs galore, all of which were paraded up the aisle, at the appropriate time, for a blessing from the Revd Vivien. Rarely has Graffham seen anything like it – or enjoyed a church service so much!



The larger animals, all impeccably behaved throughout, took along their owners, villagers Dalton and Julie Clark of Westerlands, the Bradley family of Norwood Lane, and Joanna Morris, of Topleigh Stables.

By candlelight, the children of the congregation enacted the nativity story and joined the adults in heartily singing lots of traditional carol favourites. Most





of the straw and ‘souvenirs’ left behind by the animals were cleared away in time for the next day’s well attended Christmas Day morning service. At both services, the congregations’ cheeks were left glowing by St Giles’ new pew heating system, installed late in November.

The Revd Vivien said of the Crib Service: “A number of people commented afterwards that it really made their Christmas. It was wonderful holy chaos, rather like mixing Noah’s Ark with the nativity story, and all thanks to so many children and grown ups and their animals. Here’s hoping they all come again next year!”



Diana 'Bun' Paine, 1941-2022

A thanksgiving service for the life of Diana 'Bun' Paine was scheduled, as this edition went to press, to take place at St Giles Church – where for much of her 20 years in Graffham she was organist and choir mistress – on Friday 27 January at 2.30pm, followed by refreshments at the Empire Hall.

She passed away on New Year's Eve – just as her own mother had 23 years before, on the eve of the millennium. Bun had suffered a stroke 18 months earlier and never fully recovered.

The announcement of her death, posted on Facebook's Graffham Noticeboard, attracted an outpouring of sadness mixed with happy memories from across the village.

She and husband Lawrence lived for almost two decades at Ladywell Cottage before moving to Suffolk four years ago to be closer to their son Nick and his family. Before arriving here, their home had been a few miles to the north, on the side of Blackdown.

Born in 1941 in Lancashire, Bun attended West Heath School and the Royal College of Music. She was a gifted musician, playing the piano and violin and discovering her talent for singing. In her young adult life she performed widely including with Bath Choir and Surrey Opera.

After starting her family she became a music teacher, inspiring hundreds of children and adults to share her love for music. Many families in the village will have fond memories of her 'Fun Sing' with their children.

She and Lawrence married in 1965 in Burstow near Horley. They went on to have three children, Katie, Nick and Lucy, who gave them a total of seven grandchildren.

The family requested no flowers for the thanksgiving service but asked instead for contributions to charity Help Musicians, via justgiving.com/fundraising/dianapaine23



Bun pictured with Lawrence, handing out hymn books and service sheets at St Giles in 2017, shortly before they left the village. Picture © Mary Butterworth.

New year – with new additions to the family

Audrey Noelle Scaman-Warren

(right) was born to Zoe and Jon of Rose Cottage, The Street, Graffham, at 12.30pm on Wednesday 28 December – just in time for her Dad’s birthday the following day – at Royal Surrey County Hospital, and weighing in at a precise “small but perfect” 6lbs. She’s their first child.

Zoe and Jon said: “We’ve been bowled over by the kindness of the wonderful Graffham villagers with well wishes and support throughout the pregnancy.” Like any new parent, they’ve taken “a gazillion photos”, but say this is the one which “warms our hearts the most – our perfect, precious daughter”.



James Ellis Major (left) arrived on Friday 6 January at 2.11am at Chichester’s St Richard’s Hospital, weighing 9lbs 2oz, as second son to Charlotte and Sam Major, of Carpenters Town, Selham Road, Graffham. His big brother Ted will be two on the second of this month. James is also another grandchild for Hilary and Chris Major.

Within a couple of days, he was introduced to his village neighbours with Mum, Dad, bro and grandmother taking him with them for an early supper at the Foresters Arms.

Why James Ellis? Charlie explained: “No real reason except we like it!”

Ultrafast broadband now expected from June

Graffham and East Lavington's new ultrafast broadband network is now expected to be completed from June, say the team coordinating the project on behalf of the villages, as Open Reach moves ahead with its installation.



Hundreds of households and businesses across the villages signed up for the faster internet access last spring, ensuring the infrastructure, costing more than half a million pounds, will be paid for in full by grants from the government and West Sussex County Council.

You can see the progress Open Reach's engineers are making, as they leave blue string between telegraph poles, which will be used to pull the fibre along.

Dates set for 2023 Petworth Festival events

Dates have been set for all three Petworth Festival 'happenings' for 2023:

- 2-3 June – June Edition.
- 11-29 July – 44th Petworth Festival.
- 27 October-5 November – 13th Literary Week.

Initial details are scheduled to be released this month – watch for details at petworthfestival.org.uk



THURSDAY CLUB

The Inspector Calls: Confessions of a Police Speaker



Former policeman, author and public speaker Neil Sadler shares his many humorous stories of policing in Sussex over the past four decades

9 February, 2.30pm Empire Hall, Graffham

Raffle and refreshments

All welcome

Graffham Garden Group 2023 diary

1 Feb	Wed	12.30 for 1pm	New year lunch
17 Mar	Fri	7pm	AGM
13 May	Sat	10am	Plant sale
15 Jul	Sat	2.30pm	Flower show

All events in the Empire Hall.

In addition there will be garden visits
which will be announced at the AGM.

Happy gardening!

Graffham Down work parties switch to Saturdays

Graffham Down Trust's work parties switch to Saturdays from this month, with the next scheduled for 4 February and then on 11 March. Everyone's welcome to take part – just meet near St Giles Church at 9.30am for lifts up by 9.45am. Bring strong shoes and gardening gloves. Always let Jim know in advance via jimkirke@hotmail.com if you plan to attend so that lifts can be arranged – and so you can be advised if the work party is cancelled for any reason. The aim is always to finish each session before anyone gets too tired and certainly by 1pm – by when, after helping safeguard the rare animals, insects and plant life that depend on the nature reserves above the village, a hearty lunch in one of our great local pubs would certainly have been earned!



A working party in action.

Le Freak

CHIC and Nile Rodgers Tribute

Saturday 11th of February 8.00pm

Empire Hall, Graffham, GU28 0NL



Doors and Bar open 7.30pm

Le Freak are the UK's premier CHIC & Nile Rodgers Tribute band. An 8 piece band, Le Freak was founded by experienced musicians who are passionate about funk and disco music to cover the greatest hits of it's genre. When talking about funk and disco, there is no better person to associate it with other than - Nile Rodgers, the father of disco, guitarist and music producer who brought us all the funkier of hits.

These guys are simply outstanding with a super funky set list from Chic's 70's era up to now



Good Times

Everybody Dance



Le Freak

I won't Your Love

Greatest Dancer

I'm Coming Out

My Forbidden Lover

Thinking Of You

Upside Down



TICKETS: www.empirehall.org.uk

£20 General Admission with partial seating

£35 Exclusive Balcony with guaranteed seating



Graffham Easter Market – save the date!

A message from the Empire Hall management committee

Spring is on its way, and Graffham's Easter Market is coming back – on Saturday 1 April! Think colourful stalls brimming with lovely things to buy – French soaps, artisan hand-made goodies for your home, a jolly hat for the summer, a lovely fresh painting, Simnel cake, hot cross buns and much much more! All while sitting in the sunshine, chatting to your friends over a cup of tea and slice of cake!

The fair is the main annual fund-raiser to keep our lovely, characterful Empire Hall going for now, tomorrow and for future generations and for us all to meet up and do what Graffham does best – have fun and natter!

But first, dear people of Graffham, we must get the show on the road – and at this stage we need YOU to volunteer to help – before and on the day with one or all sorts of jobs, large and small, whatever you can offer. Remember the old adage? Many hands make light work! Are you new to the village and would like to get involved? Do get in touch, we would love to meet you.

Please contact Sally Blunt at sallyblunt@btinternet.com or on 01798 867346.



The southern end of Graffham's Street, just south of the junction to Lavington Stud, was flooded for many days in mid-January by rain and spring water from the Downs gushing out of drains. This culvert is believed to have been installed originally shortly after World War II, when tap water supplies were installed to serve the houses in this part of the village. Previously, they got their water from a stream that ran alongside the road, fed by the spring by Ladywell Cottage. So floods like last month's – which made this section of road impassable to pedestrians, unless they wore wellies! – would have been more frequent for residents a century or so ago.

Help keep our streets safe and open

After the recent wet and cold weather left roads in and around Graffham and East Lavington flooded, frozen and fractured with potholes, villages have been reminded of their responsibilities in keeping our highways open and safe.

Many of the biggest puddles were caused by blocked drains and gullies, preventing water on the roads from flowing away. Tom Richardson, landlord of the Three Moles and West Sussex County Councillor for the Graffham area, who donned his wellies to clear a number of blocked road drains during the worst of the rain, said: "Please, if you have a drainage ditch on or adjacent to your land, keep it clear and make sure the water can get into it. It is a legal requirement and will also make life much easier for you and your neighbours."

Those parking vehicles on the road overnight are also urged to ensure they leave space for the gritting lorry to pass when temperatures are low.

Potholes on public roads can be reported by anyone to the highways authority for filling in using the mobile phone app LoveCleanStreets. The sooner they are reported, the sooner they can be filled – although generally some dry weather is needed before repairs can take place.



It's been a month with lots of water and ice – the floods of late December and early January, followed by a cold snap, as captured in these photos along the River Rother by © Jonathan Simons (above) and © Stuart Gerrett (below), posted to Facebook's Beautiful Sights In And Around Graffham page.

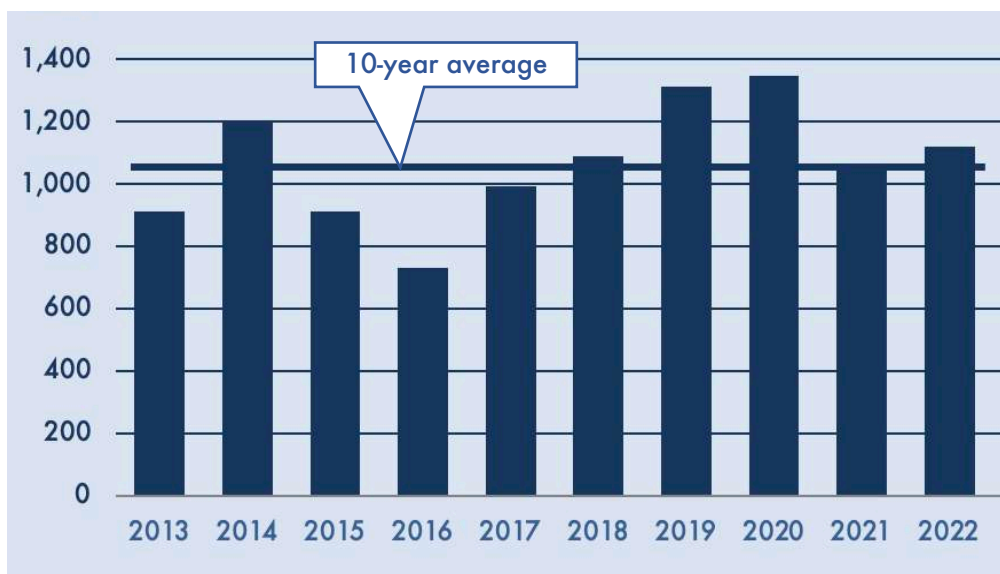


2022 gave our driest and wettest months yet

2022 gave Graffham the wettest and driest months yet recorded by village amateur meteorologist John Sutton, as he reports in his annual review of the village's weather for the past year.

The total rainfall in Graffham in 2022 was very similar to 2021 at 1,042mm year and 1,050mm the year respectively. So both were also virtually identical to the 1,050 mm 10-year average for the village.

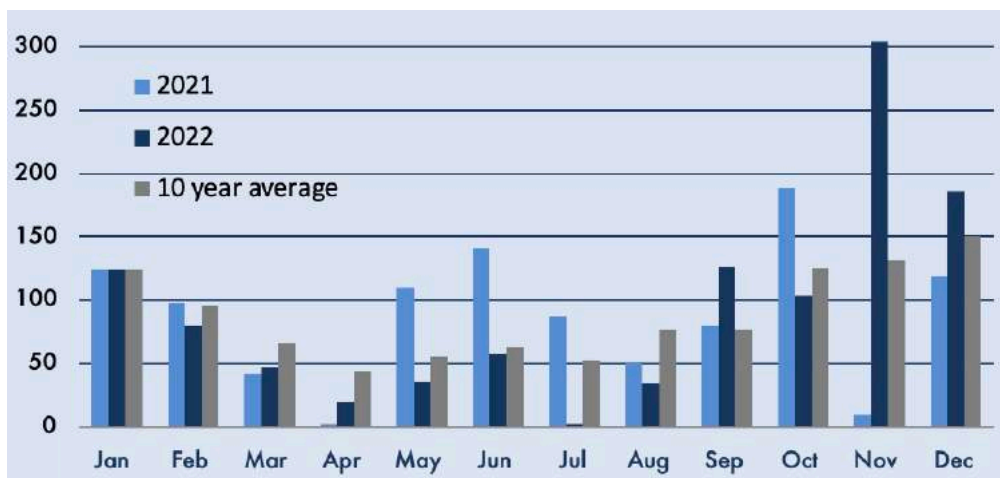
If you prefer inches, we had 41.8 ins of rain in 2022 and 41.4 ins in 2021, so less than half an inch's difference between them.



Graffham's annual rainfall in millimetres by year for the past decade.

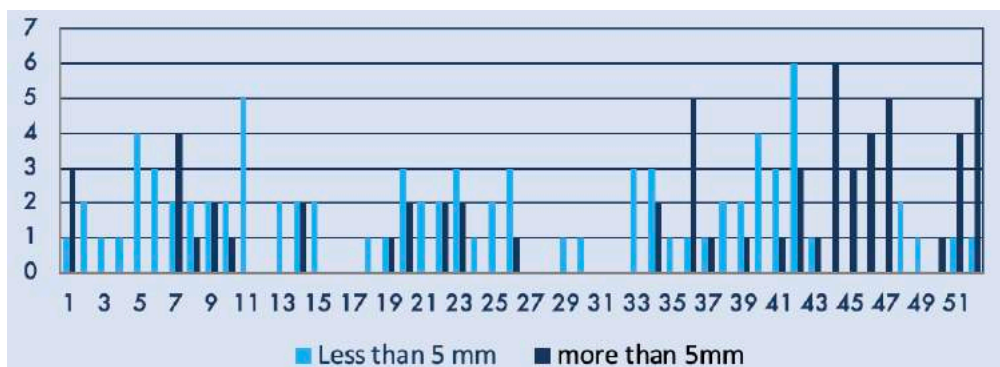
In terms of monthly totals, 2022 had some real extremes. July was very dry, with only 2.0 mm of rainfall registered – making it the driest month I have recorded although it was only very slightly drier than April of the previous year. November was very, very wet – its 304.1 mm (fractionally less than a foot) making it the wettest month I have logged, with more than twice the average for the month. So 2022 had some extremes!

It is also noticeable that more than half the village's total rainfall came in the final three months of the year. The wettest days were 18 December at 42 mm and 16 November at 40 mm



Graffham's monthly rainfall in millimetres.

If we look at how wet the days were on a weekly basis, it also shows how relatively frequently the wettest days have occurred towards the end of the year.



Number of days it rained in Graffham each week of 2022, and by how much.

It will not have escaped your notice that 2023 has started with a couple of very wet weeks. What can we look forward to for the rest of the year?

Did you know...? You can recycle the tops from your plastic milk bottles and used printer cartridges – and raise funds for charities at the same time? Just drop them (as clean as you can make them!) into the appropriate boxes at St Giles Church. The milk bottle tops are recycled to make plastic toys for children, with proceeds given to Chestnut Tree Children's Hospital. Old printer cartridges are also sold for recycling, in aid of other good causes.

Meet your neighbour: Roy and Elsa Barden

A regular feature in which we introduce local residents. This month, editor Michael Blunt catches up with Roy and Elsa Barden, who have recently returned to the village after seven years in Australia.

Anyone who has moved into Graffham in the past seven years could be forgiven for thinking that Roy and Elsa Barden are village newbies. In fact, they've just returned home after a prolonged working sabbatical Downunder.

They originally bought their home opposite the Foresters Arms in June 1999.

Previously, they'd lived in Midhurst, moving there after Roy had taken up a position as an accountant with ICI in Fernhurst. By the time he was transferred with the company to the Netherlands, son Harry had been born. Daughter Georgia followed while they were in Holland.

After their return to the UK, Roy joined Price Waterhouse as a consultant, based in London but frequently taking a flight on a Monday morning to visit a client, then flying home on a Friday. With his new job and a growing family, it was time to move home. Roy's work routine meant they could stay in the same area but try a taste of village life.

An estate agent sent them the details for Paddock View – then called Sollentuna, after a town close to Stockholm where the house's original owner had come from.

With Roy at work, Elsa went to check it out on her own. "I was a bit hesitant at first," she remembered. "It was right on Graffham's main road and directly opposite the pub." As soon as she was shown around the inside and the back and found out what Graffham is really like, she fell in love with it. The property market was moving fast at the time, so she put an offer in immediately, before Roy had even seen it. Fortunately, he was happy with her decision.

They already knew a few people in the village, and they made more friends fast. Both children were enrolled initially at Graffham School before moving on to Duncton so Elsa and Roy got to know parents at the school gates. Roy also became a governor at Duncton at the time it merged with Graffham School, "which was my introduction to village politics," he quipped.

Their social circle expanded further through the Foresters Arms. "Back then, everyone in the village popped in on a Friday evening," they recalled. "It used to be known as 'play school'!" Roy and Elsa performed in the pantos staged by the regulars, and written by fellow villagers Phil Jones and Russell Walker, and Roy



Cheers! Georgia, Elsa, Roy and Harry Barden enjoying some of what Australia has to offer on their extended break from Graffham.

played in the Graffham scratch rugby side the Hillbillies and the village cricket team. Elsa became chair of Graffham playgroup and got a job as a Learning Support Teacher at Seaford College. Harry moved on there too. As the school started accepting girls, Georgia followed.

Roy took up a post in the Cabinet Office, advising on how government departments could better share services, and the two offspring went off to university – Harry to Swansea and Georgia to Leeds.

Then in 2014 they went on a family holiday to New Zealand – where they had one of those ‘lightbulb’ moments. Roy said: “The thought struck us that it was now or never for a bit of a mid-life adventure and spend a year or two in that part of the world.”

Soon afterwards he was invited to speak at a conference in Sydney. While there, he was offered a job doing something similar in Australia to what he had been doing in Whitehall. It was as if the stars had aligned, so on his return to Graffham they rented Paddock View out and headed to the other side of the world.

They lived at first in Manly, on the ocean front across Sydney Harbour from the city centre, so his daily commute was by ferry. Elsa got a job in a large state school for boys. Again, they made friends quickly and took up new hobbies,

► *Continued on next page*

► *Continued from previous page*

which led to both Roy and Georgia singing Handel's Messiah in Sydney Opera House. They also travelled extensively throughout the region, to every Australian state and frequently back to New Zealand.

They returned every now and then to Graffham, but life in Sydney was good and the two year timeframe expanded to three, then four... But after five years they made plans to return home and gave up the lease on their Australian apartment. Then the pandemic struck, making a move back to the UK more than tricky. Roy was able to extend his contract and they moved to a flat in the city centre.

But soon it was time to decide whether to stay or head home. "Seven years is a bit of a turning point," Roy said. They had by then gained Australian citizenship and Harry was committed to staying in Sydney, but Georgia had already decided to pursue her career back in the UK and Roy and Elsa decided to follow her.

What was it like returning to Graffham in September after seven years in one of the world's most attractive cities?

Elsa smiled: "Sydney was fantastic, but it's lovely to be back in our own home and among our old friends in this wonderful village."

After getting their house back the way they want it after renting it out, they are both now working again part-time and busy catching up with friends and relatives locally and across England and Europe. Roy has rejoined the Graffham Down Trust work parties, is beating locally and singing in a local choir while Elsa's back bellringing in St Giles and they are both doing yoga at the Empire Hall.

Has Graffham changed much while they've been away?

Roy noted: "In some ways, it hasn't but in other ways it has. There are still many of the same societies, like the Thursday Club. The shop goes from strength to strength and we still have our three pubs. While most of our old mates are still here, there are also many new faces and the housing stock has definitely been spruced up! Maybe those Friday evening village gatherings at the Foresters should make a comeback so it's easier for newcomers to meet their new neighbours!"

Did you know...? You can raise funds to help safeguard the future of Graffham's St Giles Church virtually whenever you shop online – at zero additional cost to you. More than 5,000 retailers participate, through easyfundraising, the UK's biggest charity fund-raising site. See stgilesgraffham.org/shopping-online/

Shop serves up shelter and Cook ready meals

Customers of Graffham Village Shop will have noticed two new enhancements in recent weeks – the installation of more shelter around its outdoor café seating area and the arrival of the popular Cook range of ready-prepared frozen meals.

Protection from the elements around the outdoor tables and chairs was crafted by village carpenter Martin Taylor, at the request of, among others, the ladies who visit as a group every week after their Ease Into Exercise session at the Empire Hall up the road.



The award-winning Cook, whose frozen goodies are now stocked by the shop, has become one of the South East's most popular providers of ready meals since its launch in Farnham 25 years ago. It already has its own branded outlets at



Midhurst, Chichester, Haslemere and dozens of other locations across England – besides, now, offering its delights at

Graffham Village Shop. Its range extends across British, European, Asian, African and other favourites, with vegetarian, vegan, gluten and dairy free options available, in various portion sizes.



Jeeva personally serves the Ease Into Exercise ladies on their first group visit to the shop after its new shelter was completed (left) before showing off his new range of Cook's popular frozen ready meals a few days later.

To advertise in Graffham Parish News, contact
editor.graffhamparishnews@gmail.com



Tangletrees' new owners Ian and Julia Forrest aim to change the current building...

Turning Tangletrees into something special

Plans for the future of Tangletrees, the house overlooking the rec from the north, have been outlined by its new owners Ian and Julia Forrest in a series of briefings for villagers, including a packed session at the Foresters Arms, ahead of submitting a formal development proposal to South Downs National Park, *writes joint editor Philippa Sanders*.

The proposals reflect initial feedback from the planning authority after the couple's pre-planning submission last year, following their purchase of the plot last Easter from Tim and Celia Tinker, who had been its owners for more than four decades.

Their aim is to demolish the current building – something of a hotchpotch of energy inefficient extensions to a moderately small original dwelling – and replace it with a new home that the Forrests feel will be far more in keeping with this special Graffham site.

Ian has spent much of his career immersed in environmental projects, as director of a conservation business issuing carbon credits from a base in the Amazon, while Julia, as a professional sculptor, brings her artistic eye to the project. As such, they are keen to apply their professional experience and personal principles to their new home, which, since the Tinkers moved and pending its redevelopment, has been used to house two families of Ukrainian refugees.

Ian said: "The new Tangletrees will stand as an exemplar of good design, achieving the highest levels of energy efficiency combined with the lowest possible embodied carbon. The exterior will reflect the rural nature of our



...into a best-in-class eco-friendly home reflecting the special site on which it sits.

environment with varying ridge heights, a barn-shaped silhouette and also through the use of natural local materials such as stone cladding, wood cladding and clay roof tiles.”

Subject to planning approvals, the construction will use as much natural material as possible – a timber frame, eco-friendly ‘hemcrete’, straw panels, lime plasters and paints, all of which are not only highly efficient insulators and internal humidity managers but also net negative carbon-emission constituents.

The Forrests, who will be moving to Graffham from Liphook, want to source materials as locally as possible, using stone from Fittleworth and local timber wherever possible – although Graffham’s Victorian era brickworks which previously occupied Tangletrees’ site has long since closed!

As much as possible of the existing dwelling will be recycled on site, with whatever is left recycled as nearby as possible.

The new house will cover virtually the same footprint dimensions and orientation of the building it replaces, with its interior lay out reorganised to make it more appropriate for today’s style of living and focussed more on the less obvious views of the site, those to the north east.

An environmental survey, commissioned by the Forrests, of the seven acres that come with the building, categorises most of it as “unimproved grassland with limited plant species diversity, leading to reduced insect and animal diversity”. Following discussions with the South Downs warden for the area, the Forrests aim to convert much of it to wildflower meadows, featuring plants native to this region, while continuing to graze sheep to encourage plant diversity as well as supporting

► *Continued on next page*

► *Continued from previous page*

a local farmer. They also hope to expand the boundary hedgerows by establishing another 40 to 50 metres, creating a “green corridor” connecting existing woodland to an isolated copse.

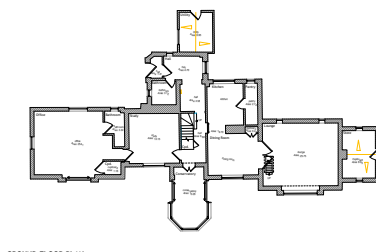
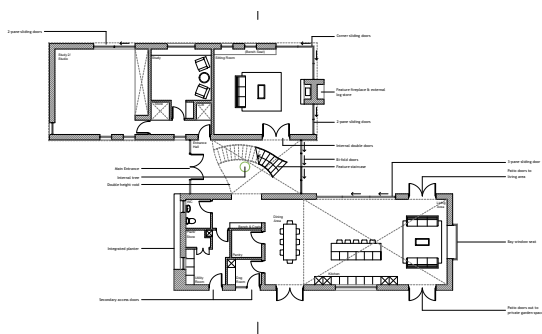
Planting of indigenous tree species, such as elm, chestnut, beech and a number of fruit species, will also increase biodiversity and, in the specific case of the elm, help the recovery of a genus decimated by disease over the past 40 years.

An additional wildlife pond will be dug out with a view to creating habitats for amphibians, with nesting boxes and sites installed both in trees and in the roof structure of the new dwelling to encourage bird life.

The Forrests aim to submit their planning application in the coming weeks and, with a fair wind and positive reception, hope to start the development this year.



Ian and Julia Forrest want their new Tangletrees to be something special for Graffham.



The proposed new Tangletrees' footprint dimensions (left) are similar to those of the current building (right).

Graffham Parish News' funtastic February quiz

Ten quick fire questions from Bill Barrett to test your local, topical and wider general knowledge. Answers below (no cheating now!)



1 Assuming he ascends the throne, Prince William will be the first reigning descendant of which monarch, who died in February 1685 with no legitimate issue?

2 In February 1923 John Moores, Colin Askham (né Littlewood) and Bill Hughes founded the first company to run which weekly betting competition?

3 Which Hindu-influenced, iconic lead guitarist would have been 80 on 25 February?

4 Which material, formerly used to make golf balls and insulate telegraph cables, is now used by dentists to fill root canals?

5 If an animal undergoes ecdysis, what does it do?

6 Which poet wrote *Ha'nacker Mill* in 1923?



7 In the 5th round of the 1983 FA Cup, Liverpool's hopes of a domestic treble were ended when they were surprisingly beaten 2–1 at Anfield by who?



8 What do the initials of train drivers' union ASLEF stand for?

9 North and South Uist are islands within which archipelago?

10 Which late comic actress played Mrs Augusta Prodworthy in *Carry on Girls*, one of four appearances she made in the series?



- Puppy Training
- Dog Agility
- Pet Gun Dog Classes
- 1-2-1 Sessions

Dogs Doing Better

Kilsham Farm, Petworth GU28 0LJ
www.dogsdoingbetter.com
 Call Liz 07702 009272
 Or email:
dogsdoingbetter@gmail.com

- Quiz answers:**
- 1 Charles II.
 - 2 The Football Pools.
 - 3 George Harrison.
 - 4 Gutta percha.
 - 5 Shed its skin.
 - 6 Hilaire Belloc.
 - 7 Brighton & Hove Albion.
 - 8 Associated Society of Locomotive Engineers and Firemen.
 - 9 Outer Hebrides.
 - 10 June Whitfield.

Nature Notes: Sussex's smashing Nutjobber

A monthly column by Sussex Wildlife Trust's Head of Community Action for Wildlife Michael Blencowe.

Back garden birdwatchers know there's a pecking order on the peanut feeder. Coal Tits are elbowed out by Blue Tits who in turn are ousted by Great Tits. But when the Nuthatch shows up everything scarpers. I don't blame them. If I was jostling at an all-you-can-eat buffet and some fella in a black mask brandishing a machete jumped in I'd be off in a flash too.

With its streamlined body, blue back, pink chest and black eye-stripe, the Nuthatch cuts a dynamic figure – a swashbuckling, bird table buccaneer. The weapon it wields is a stout, dagger-like beak but it's not designed for skewering birds. Nuthatches are nuts about nuts.

The Nuthatch's name comes from 'nut hacker', a reference to the bird's habit of jamming hazelnuts and acorns into tree crevices and then using its powerful bill to noisily smash them open. There's an old Sussex name which fits this manic, intense bird perfectly: Nutjobber. I've never seen this nutty little bird sitting still.

ClearSkies

Travel Insurance

info@clearskiestravelinsurance.com

01428 772722

Did You Know...

...if you are ill or injured while on a Cruise, you will probably be confined to your cabin. With ClearSkies Cruise Travel Insurance you will get a daily inconvenience payment.

**To obtain a discounted quote please visit
clearskiestravelinsurance.com/intro/graffham**

ClearSkies will also make a small donation to village charities for every policy sold

ClearSkies Travel Insurance is a sister brand of MPI Brokers

They're so crazy about climbing that they're the only British bird that can actually climb headfirst down a tree.

At this time of year our garden birds become more vocal and aggressive as they claim and defend territories and croon their tunes to attract a



David Hall, Sussex Wildlife Trust

mate. Spring lacks this urgency for the male Nuthatch. He hasn't stopped fighting all winter as he angrily defends his hectare of woodland. Nuthatches are monogamous too and the loyal pair soon dispense with spring serenades and get down to the hard work of making a home.

Many birds start from scratch. Twigs and moss are laboriously collected and nests are painstakingly woven. Nuthatches, however, are happy to let someone else undertake the heavy construction work. Their residence of choice is a spacious tree cavity drilled and abandoned by a woodpecker. Sure, it needs a bit of work but the Nuthatches will make do and mend.

The main problem is the front door. It's too big. This gaping hole can let in predators or Starling squatters who will happily turf out nesting Nuthatches. So while the male keeps guard, the female Nuthatch starts bricking up the entrance hole. Her bill is used like a plasterer's trowel smearing mouthfuls of mud until the terracotta porch is perfectly Nuthatch sized. She is a compulsive builder and if they move into a nest box she still cannot resist plastering mud around the hole, even if it's already the right size.

It's great to report on a bird that's actually increasing in number and range. Once restricted to South East England, the Nuthatch now breeds in Scotland – probably assisted by the provision of garden peanut feeders as it marched north. And as Britain seemingly gets crazier by the day, it's nice to know there's still space for a few more nutjobs.

Town versus Gown hockey tradition bullies off



Town's Beanie Bradley fends off the challenges of two persistent Gown defenders.

Tuesday 27 December saw the revival of Graffham's traditional Town versus Gown hockey match.

Instituted a decade or so ago when Cambridge hockey blue the Revd Steven Gray combined roles as parish vicar and Seaford College's chaplain, the match pitted staff and families of the

Words: Philippa Sanders
Pictures © Colin Barker

school against villagers, many of whom had honed their skills on the very same astro pitch.

This year the event was organised brilliantly by Peter, Cindy and not least Beanie Bradley, with £150 proceeds going towards St Giles Church's bells fund. It was held on one of the few



Graffham's dangerous defender Pete Carr shows his power (left) while late call-up Joe Amin adds further grit to the Town defence (right).



The Revd Vivien presents awards to team captains Gown's Chris Adams (left) and Tristan Evans.

fine days in a month of cold or wet weather, with conditions perfect for players and spectators alike. Beanie was inundated with volunteers for her Graffham team (see next page) while the Seaford squad was captained by the familiar figure of Chris Adams, the school's Director of Cricket and also a Graffham resident.

Chris Major dusted off his whistle to umpire, while Seaford's Emma Trace controlled the other end of the pitch – even though three of her children turned out for the Gowns. Graffham donned yellow tabards for the encounter.

The contest started fiercely straight from the 11.30am pushback, with Seaford taking an early lead. The voices of Lucas Thornley and Pete Carr could be heard motivating Graffham from midfield and defence, and it was not long before a shot from Ben Evans drew the Town level. Seaford went ahead again, but Graffham's grit and determination and a fine team move led to a Jamie Thornley goal

► *Continued on next page*



Town and Gown players line up together after a hard-played, tight contest.

► *Continued from previous page*
following a Beanie assist.
Seaford scored again in the
third quarter to make it 3-2.

An electrifying performance
from a fully-insulated Nick
Dent in the Graffham goal
kept the Town in contention
until late in the final quarter,
when an impressive goal
from the edge of the D sealed
the final result as a 4-2 win
for the college.

Graffham captain Tristan
Evans was delighted with his
team's performance though
commented that wearing
gowns might have taken the
edge off the opponents' play!
He nominated Graffham's
Nick Dent as man of the
match and thanked the
Bradleys for their
tremendous organisation and
refreshments.

The Revd Vivien, who
presented awards to the
captains, said: "What an
inspiration to restore a
tradition like this that unites an amazing school with its equally amazing village
community. It was an exhilarating tonic to be in the fresh air after the Christmas
festivities, watching such a high standard of play. Thank you Beanie, and
everyone who stepped up to the plate and joined the fray. St Giles' bell-ringers
send hearty thanks too for the donation."

It is to be hoped that the fixture will be reinstated as a regular post-Christmas
highlight with a chance for revenge next year!

GRAFFHAM TOWN SQUAD

- 1 **Nick Dent**, electrifying goalie
- 2 **Jack Dent**, a wicked Dent, midfielder
- 3 **Reef Dent**, the Dent junior junior, there to help Dad put pads on
- 4 **Pete Carr**, dangerous defender bringing the power
- 5 **Sara Carr**, vet running on the wing
- 6 **Evie**, Mackie granddaughter, Town's secret weapon, capped by England u16s
- 7 **Tristan Evans**, captain, wise midfielder
- 8 **Ben Evans**, Big Ben, doing it for the bells
- 9 **Pete Bradley**, Bladders is back as sweeper
- 10 **Beanie Bradley**, still single, likes pina coladas and getting caught in the rain
- 11 **Patrick Limpus**, no-one quite like grandpa, using his father's stick
- 12 **Seb Limpus**, pilot on the wing, blowing his own trumpet
- 13 **George Limpus**, there's no limp in George, unless his Dad trips him up!
- 14 **Jamie Thornley**, bringing his footie skills to the Astro
- 15 **Jacob Thornley**, the leftie on the left
- 16 **Ian Thornley**, who's the Daddy?
- 17 **Rich Sabin**, new addition to the squad
- 18 **Tristan Eves**, definitely a cut above the rest, upfront striker
- 19 **Karen Goodyear**, don't mess with the Mumma, small but mighty
- 20 **Fleur Hill**, *ad alta*, she's on her way to the top
- 21 **Jessie Hill**, our nurse upfront
- 22 **Xenia Truman**, Seaford's 2020 captain bringing her magic back to the Astro
- 23 **Rebecca Walters**, England polo player with legs of a thoroughbred
- 24 **Paddy Moore**, goal protector bringing the beef
- 25 **Chloe Hamlett**, jet setting all round Pony Club mother
- 26 **Joe Amin**, late addition to the squad, strengthening the defence with lots of facial hair and experience
- 27 **Maisie Amin**, another late addition, with attacking guile
- Coach Mick**, supplying half-time oranges and G&Ts

Bill's bygones: Marilyn, Buck House, the Big Lie

A regular feature in which joint editor Bill Barrett looks back at what was happening in the village and the wider world this month in the past.

10 years ago – February 2013: Seaford College housemaster, rugby coach and former Scottish international Bill Cuthbertson (right) is speaker at the Men's Breakfast at the White Horse. A further £20,673 towards the cost of refurbishing the Pavilion is obtained following a successful application to Chichester District Council's Low Carbon Fund. Lawrence Paine retires as Chair of Graffham Conservatives after seven years. Graffham Empire Movies screens *My Week with Marilyn*. Benedict XVI becomes the first Pope to resign since Gregory XII in 1415. Deaths of Richard Briers (aged 79) and Reeve Steenkamp (29, shot by boyfriend Oscar Pistorius).



25 years ago – February 1998: Almost 150 towns and villages across the UK vie for four Prince Phillip awards for the excellence of their sports facilities.



Graffham is one of the winners and Graham Kingsmill, Den Petter and Dick Challen are invited to Buckingham Palace to receive a silver salver from the Duke of Edinburgh, as President of the National Playing Fields Association (left). A Millennium Fund-Raising Dance is held on St Valentine's Day

at the Empire Hall. Work begins on an HGV route around Petworth via Kingspit and Haslingbourne Lanes. The 18th Winter Olympics are held at Nagano, Japan. Deaths of controversial statesman and academic Enoch Powell (85) and Father Ted' actor Dermot Morgan (45).

50 years ago – February 1973: Graffham Men's Forum is held at Pescod's Stores, hosted and led by John Holland – his chosen subject *Democracy: The Big Lie*. Four Brownie Guides 'take their promises' at the Empire Hall. Damage and obstruction to rights-of-way above Graffham lead to complaints by the Society of Sussex Downsmen and Graffham Parish Council. Almost 300,000 UK government employees walk out on their first ever nationwide strike. Tony Orlando and Dawn's *Tie a Yellow Ribbon Round the Ole Oak Tree*, the year's top-selling single in both the US and UK, is released.

In her regular column, village historian Pauline Goodwin this month looks at how the village has kept itself fed and watered.

We are reminded of this longevity in *Discovery, Innovation and Science in the Historic Environment* in which Carpenter, Small, Truscoe and Royall refer to the “prehistoric or Roman field systems... identified around Tegleaze” in Graffham. Tegleaze, by the way, itself comes from two ancient Sussex words – teg, meaning a two-year-old sheep, and leaze, or pasture.

Royal Horticultural Society,
Incorporated by Royal Charter, 1801.

Founded 1804.

CERTIFICATE OF AFFILIATION.

This is to Certify
that the _____
_____ is a member of the
ROYAL HORTICULTURAL SOCIETY OF GREAT BRITAIN
and the _____
this _____

CHAS. J. B. B. B.

The certificate of affiliation presented by the Royal Horticultural Society in 1921 to Graffham's garden group.

Graffham Parish News

LORD WOOLTON PIE

THE OFFICIAL RECIPE

In hotels and restaurants, no less than in communal canteens, many people have tasted Lord Woolton pie and pronounced it good. Like many another economical dish, it can be described as wholesome fare. It also meets the dietician's requirements in certain vitamins. The ingredients can be varied according to the vegetables in season. Here is the official recipe:—

Take 1lb. each diced of potatoes, cauliflower, swedes, and carrots, three or four spring onions—if possible, one teaspoonful of vegetable extract, and one table-spoonful of oatmeal. Cook all together for 10 minutes with just enough water to cover. Stir occasionally to prevent the mixture from sticking. Allow to cool; put into a pie-dish, sprinkle with chopped parsley, and cover with a crust of potato or wheatmeal pastry. Bake in a moderate oven until the pastry is nicely browned and serve hot with a brown gravy.

...in case you fancy trying it!

those days and all the work – digging, hoeing, planting, pruning and so on – was done by hand, but we had virtually all the vegetables we needed, in addition to which we had a few strawberries and raspberries, as well as some flowers.”

Even the elderly, like our neighbour, Miss Bridger, who lived then at Chelsea Cottage had a large and immaculate vegetable garden with plants marching in the straightest rows across her plot, with numerous fruit trees and shrubs, too.

She also kept chickens in her old pig sty. Poultry keeping was popular in the village – we had chickens at Hillside for many years, my grandmother kept ducks at Woodcote, Lottie Challen kept hens at Charwal, Daphne Howick kept bantams at Guillods, Mrs Pescod, opposite Hillside, kept a large flock of savage geese and the Speaks had at least one mean turkey!

Large gluts of eggs in the summer months were preserved by various methods. Several of my Graffham cousins recall their mothers using isinglass to preserve eggs. I remember large zinc baths filled with water in which eggs bobbed, coated with the grey isinglass made from the dried swim bladders of fish. Olive Challen and Kath Robinson preferred to

► [Continued on next page](#)

horticultural things, a sharing of surplus in the form of seeds, plants and produce and during harvest months there was good natured competition about successful crops and their size. But it was hard work!

Following a short break after a long day's employment, toil began again in the garden. Harold Passam's memoirs describe his father's routine: “In the evenings (after his day job) he would cultivate the large garden attached to the house. We had no mechanised tools in



Pickled eggs like these were once the only food offered at The White Horse.

► *Continued from previous page*

pickled their eggs – though pickled eggs are rather a mystery to me! For many years, though, pickled eggs were the only food that Pam Woods served at The White Horse. They sat in a huge glass jar on the bar and very occasionally someone might have one placed inside a bag of crisps. The husbandry of bees was also popular, with Harold Passam's father among those who kept hives in his Graffham back garden – just like today's Murray West, Annie Dennig, Harriet Rowntree and Phil Austin. Harold recites a rhyme:

*A swarm in May is worth a load of hay,
A swarm in June is worth a silver spoon,
But a swarm in July isn't worth a fly.*

He recalls harvesting the bees' honey: "The whole household would be involved. The wax-topped chambers were uncapped, the combs placed in the centrifuge and we boys would take turns to rotate the handle to extract the honey... We would bottle it and stick labels on the jars. Some sections were placed in cartons. Dad would then send these sections and the jars for sale. Finally, the cappings and any spoilt or inferior combs would be boiled to separate the wax from the non-wax impurities. Dad would post off the resulting cake of pure, yellow beeswax to foundation wax supplier Horace Friend of Wisbech, Cambridgeshire, in part payment for the foundation for new frames."



Honey before extraction from its comb.

Although, for sure, no bees were harmed in her wine making, Kath Robertson called one of her wines, sitting in a demijohn among a row of other varieties, "bumblebee". Raisins bobbed in it, looking like bees, added to give body, improving the liquid's texture and depth of fruitiness. All manner of home-produced alcoholic and non-alcoholic drinks were produced in the village. When the Bridgers ran The Woodman pub, it was famous for brewing its own extra strong beer. Elderflower wine and cordial have always been favourites, and Graffham's trophies for local sloe gin have been up for grabs right up to today.

Foraging for food, like field mushrooms, was equally as popular. Harold Passam remembers searching for the fungi on Ambersham polo ground every Saturday

morning. Many families had or have their favourite spots – ours were the stud and the fields behind the old shop. Once home, we would slice them and toss them into a pan. Usually they were delicious but on one occasion, as the heat hit the mushrooms, a grumble of maggots emerged. At least, from this gruesomeness, I have learned that one of the collective nouns for maggots is a grumble! While foraging, it is always good to remember the adage: “You can eat any fungi but some you will eat only once!” Unless of course you have the mycologist of the time with you, like the current village expert Jonathan Simons!

Graffham folk have found other ways to nourish themselves, too, as we are reminded by the Graffham Women’s Institute scrapbook of 1947, which records “the smuggling days of the 18th century” when the husband of “an ancestress of one of the oldest established families now in Graffham... did an open trade as a blacksmith but under the counter he smuggled goods, mainly of the spirituous kind... This was the blacksmith’s black market”.

Similar activities were still in evidence in the 1950s as is revealed in the memories of Harold Passam who spent his childhood within our parish. He recalls that each Saturday Tony Pearce, a grocer from Midhurst, made deliveries to their family cottage and “tucked... under cover there would be a few ‘Tizer’ bottles, filled with strong, dry, home-brewed cider for my father”.



Learn how to make your own honey

The nearest beekeepers’ club to Graffham, Wisborough Green Beekeepers Association, is hosting a one-day introduction to beekeeping course on Saturday 4 March at Rudgwick Village Hall, Guildford Road, Bucks Green RH12 3JJ. The session is aimed at beginners, ‘improvers’ and those just thinking of taking up the hobby. Booking is essential – via bit.ly/WGBA-course-2023



The garage that previously stood on the site now occupied by the village shop, pictured in 1994, just after it closed.

Remembering Graffham's garage

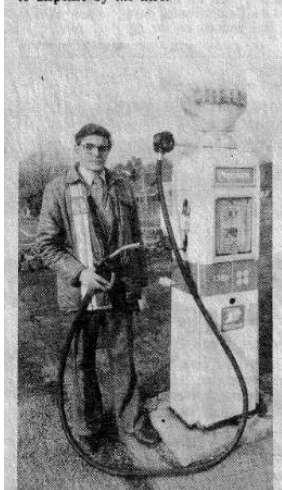
Newly uncovered pictures of the garage that used to stand on the site occupied now by Graffham Village Shop are among the latest additions to Graffham Archive, thanks to Facebook's Graffham Noticeboard.

The archive's webmaster Jonathan Simon posted the photo above and the press cutting (right) on the social media site on behalf of archivist Robin Brind, as part of a new initiative to spread the word about the collection of old photos, stories, materials and other memorabilia they maintain for the community.

Within hours, John Stubbington of West Lavington had dug out his photo album and posted the pictures below, showing the garage without any petrol pumps – and before the current brick building was constructed. A garage stood on this site for many decades, run by Roy Griffiths and the Boxall family before him, who, before

Common Market uniformity could bring an end to the taste of history for motorists who call at Graffham's village garage in West Sussex.

Two of its three petrol pumps date back to the 1940s, but they will have to go if proprietor Roy Griffiths is ordered to dispense by the litre.



John Stubbington's photos of the garage before the current brick building was erected (left) and its replacement under construction (right).

the arrival of the internal combustion engine, when the premises was also a blacksmith, offered the equivalent of today’s taxi services – by horse and cart, In 1965, the garage had three petrol pumps, with fuel supplied by Shell (and later National) costing from 4s 11d (almost 25p in today’s money) a gallon – equivalent to around 5p a litre. Besides selling petrol, the garage offered services and did MOT checks.

The last owner, Roy Griffiths, left the garage in the very early 1990s to become landlord of the White Horse. After plans to develop the site for housing fell through, villagers formed the Graffham Village Shop Association – shortly after the legendary Pescods stores closed its doors – and within days raised the £120,000 asking price to acquire it for the stores run today by Jeeva and Vasu.

See what other gems are held in the Graffham Archive at graffhamarchive.co.uk

Reports from the rec

Edited by Philippa Sanders

Time to get fit for the summer? You can do it without leaving the village!

Graffham Tennis Club

December and January fixtures in the East Hampshire League fell foul of both wet and icy conditions, so there are no matches to report on. One home league fixture for February is listed below and next month the club will publish its ‘save the date’ calendar for the warmer months. Tennis is taking place, though, when the weather permits, and the seniors (Over 60s) have kept up their Monday morning sessions. Contact Nettie Lanaghan at thornhills@aol.com if you would like to play and be added to the relevant WhatsApp group. All welcome!

Graffham Tennis Club East Hants League home fixtures: February					
Do come and spend a winter afternoon supporting your teams!					
26	Sun	2pm	Mixed Doubles	Div 3	v The Avenue

Graffham Badminton Club

Playing indoors, at the Empire Hall, the village badminton players have coped with the weather conditions rather more successfully than their tennis counterparts, with their 7 pm Wednesday sessions regularly well attended. If you would like to join in – and all standards are welcome – please contact Louisa Thomas on 07795 353038.

See also page 45 for other ‘keep fit’ activities at the Empire Hall!

Property is our business

With over 160 years of knowledge, we offer the full spectrum of specialist advice whether lettings, residential sales or professional property valuations. We'd be delighted to hear from you.



Call us now to speak to one of our experts **01798 345 980**

Residential Sales

James Machell
james.machell@savills.com

Professional Valuations

Guy Streeter
gstreeter@savills.com

Residential Lettings

Lottie Murphy
lottie.murphy@savills.com

Savills Petworth, Exchange House, Petworth, GU28 0BF



CLEAN SWEEP



Brush & Vacuum Chimney Sweep

No Mess - No fuss Fast & Friendly
Prompt Reliable Service
NACS/HETAS Certificates Issued
Fully Insured

Serving
Midhurst, Haslemere & Petersfield



CLEANER CHIMNEYS ARE SAFER CHIMNEYS!

Call - Gary Strowbridge on 01730 812011 or 07774 295067



Property watch

Homes for sale locally, posted at [rightmove.com](https://www.rightmove.com) since our previous edition:

Smithbrook Hill, Lodsworth GU28 9DN: Three-bedroomed detached house, two/three bathrooms, two/three reception rooms, kitchen/breakfast room, self-contained annexe., 0.39 acre garden 195sq m/2,102sq ft. Guide £1,175,000. *Knight Frank, Haslemere, 01428 771287. Added 10 Jan.*



1 Chestnut Cottages, Byworth GU28 0HP: Three/four-bedroomed semi-detached house, bathroom, shower room, sitting room, kitchen/diner, utility room, conservatory, garage, 0.28 acre garden. 174sq m/ 1,873sq ft. *Guide price £795,000. Barrington & Co, Petworth 01798 309657. Added 9 Jan.*

Planning applications

A summary of latest applications for planning approval in Graffham and East Lavington civil parishes filed with the South Downs National Park as this edition went to press. For details, see bit.ly/sdnp-planning

Seaford College, East Lavington GU28 0NB: Conservation repair of gate lodge's roof covering, roof structure, brick flint and masonry walls and path and outside steps. SDNP/22/05897/LIS. *Received: 21 Dec*

Ambersham House, Selham Road, South Ambersham GU29 0BX: Repairs to external fabric and internal alterations to residential dwellinghouse. SDNP/22/05698/LIS *Received 7 Dec*

The Paddocks, Selham Road, South Ambersham GU29 0BX: Construction of an L-shaped block of nine stables. SDNP/22/05625/FUL. *Received: 2 Dec*

Summerfield Cottage, The Street, Graffham GU28 0NP: Discharge of various conditions. SDNP/22/05436 and 05438/DCOND *Received 22 Nov*

Please support us: Graffham Parish News is delivered to every home in Graffham and East Lavington each month – for free. If you like reading the magazine, then please contribute towards its costs through a monthly online donation to its publisher, our village parish – and help safeguard the future of the village's beautiful and historic St Giles Church. It only takes a minute, at bit.ly/GPN-donation



theflooringbrothers.co.uk

**LET US PUT THE COMFORT
BACK UNDER YOUR FEET!**

Locally based carpet and vinyl
fitters and suppliers

Small family business with no
large overheads so we offer
sensible prices, combined with
a friendly personal service
from start to finish

Jon: 07595 873598

Lucas: 07532 453873

info@theflooringbrothers.co.uk



JOSEPHINE ELLEN INTERIORS

Bespoke Curtains, Blinds
& Soft Furnishings

Friendly & professional

Independent business

Hand made in Perworth

jem@josephineellen.co.uk

07837 479209

www.josephineellen.co.uk

**Please mention
Grafham Parish News
when doing business
with our advertisers**

W. Bryder & Sons

est. 1863

The Gables

Tillington

GU28 9AB

Tel: 01798 342174

95 Lower Street

Pulborough

RH20 2BP

Tel: 01798 872000

Email: wbryderandsons@hotmail.co.uk

**5TH GENERATION LOCAL FAMILY RUN
INDEPENDENT FUNERAL DIRECTORS**

24 Hours Service

Private Chapel of Rest

Monumental Stones supplied

Pre-Paid Funeral Plans available

Grave Maintenance service

Crimestoppers and police appeals

Sussex Police's log of incidents locally in recent weeks. If you have any information which might help, please report it, quoting the serial number – by phone on 101 or online at bit.ly/crimeupdate

Fittleworth, Lower Street: Overnight between Sunday 1 and Monday 2 January two windows on a vehicle were criminally damaged. *Serial 0242 02/01.*

Midhurst, Iping Lane: On the afternoon of Sunday 1 January a vehicle was broken into. Nothing was stolen. *Serial 0441 02/01.*

Lodsworth, The Street: In the early hours of Sunday 1 January, the bonnet of a vehicle was criminally damaged. *Serial 0622 04/01.*

Fittleworth, Coates Lane: Between Wednesday 28 and Thursday 29 December, two wheelie bins were stolen. *Serial 0901 29/12.*

Midhurst, North Street: Between Tuesday 27 and Wednesday 28 December, a business premises was burgled and food stolen. *Serial 0671 28/12.*

Midhurst, North Street: Between Saturday 24 and Wednesday 28 December, a business premises was burgled. Nothing was stolen yet damage was caused to the property. *Serial 0224 28/12.*

Northchapel: On the evening of Saturday 24 December a set of vehicle keys were stolen from a parked vehicle. *Serial 0480 27/12.*

Midhurst, Bepton Road: On Wednesday 21 December, a number plate was stolen from a vehicle. *Serial 0100 27/12.*

Lodsworth: Overnight between Thursday 22 and Friday 23 December a barn was burgled and several items stolen including a quad bike and power tools. *Serial 0840 23/12.*

250 Christmas drink or drug driving arrests in Sussex








Sussex Police say they made almost 250 arrests for drink and drug-driving during the force's month-long crackdown in December. Officers were called to 52 road traffic collisions where the driver being intoxicated behind the wheel was suspected to be a factor.

To advertise in Graffham Parish News, contact
ads.graffhamparishnews@gmail.com



Qualified experienced and hardworking
tree care and garden experts.

-  All aspects of tree surgery
-  Specialists in the pruning of wisterias and roses
-  All aspects of garden maintenance
-  Fruit pruning and training
-  Garden build / soft landscaping

07791 369205 - james@applesandpearsgardening.co.uk

www.applesandpearsgardening.co.uk

Horticulture **NPTC**

"This is a school that really does empower"

Tatler Schools Guide 2022

VISIT US!

Please call 01798 831456 or email:
sobrien@dorsethouseschool.com

to find out more or to make an appointment.

Independent prep school for children from 4 - 13

Morning minibuses and after school clubs

DORSET HOUSE SCHOOL

Bury • Pulborough

www.dorsethouseschool.com



Foodbank says thanks but warns of rising need

The Chichester District Foodbank, which runs the outlet in Petworth covering Graffham and other villages in the area, has issued “a very big thank you” to the community for all donations received in 2022 – and the early days of 2023 – but has also warned that the cost of living crisis has increased demand on its services and that this is likely to worsen as the new year progresses.

Its Petworth outlet alone delivered 72 days’ worth of food plus baby items to people in the town and surrounding villages in just one week last month.

Lead Coordinator Ines Garcia said: “Unlike foodbanks in some parts of the country, we’ve been fortunate so far, in maintaining sufficient stocks of supplies through the public’s generous donations and we appreciate the response to our requests for items we urgently need. These have helped so many people of all ages who have had to turn to the foodbank.”

Donations have also been much appreciated from schools and churches, like Graffham Infants School and St Giles, and via local businesses.



The Petworth foodbank has also been providing ‘kid’s lunch packs’ in the main school holidays, to help cover the loss of free term-time school lunches. Ines added: “We’ve had huge support from Seaford College with this, and some lovely extras from Midhurst and Petworth Rotary Club and SØDT bakery in Petworth.”

It has also received financial gifts, enabling it to buy food and also warm gear for adults and children in need –hats, gloves, scarves, socks and hot water bottles.

Ines added: “Every single tin or packet of food goes towards making a difference to people who are struggling. Our volunteers are working hard to get all these donations sorted, packed and given out to people in Petworth and the surrounding villages in this area. We couldn’t do this without your continued support.”

The nearest donation point is here in Graffham, outside the village shop. Or there are collection points at Petworth Co-op or Midhurst Sainsbury’s or Tesco. How about buying a few extra items next time you shop to help out?

All items must be long-life (packed or tinned), ‘in-date’, unopened and, because of ‘Natasha’s Law’ (to protect allergy sufferers), only items with a full ingredients list can be accepted. Or you can support its work financially, with a cash donation at bit.ly/chi-foodbank-donate

PACT needs a new Treasurer



Petworth Area Churches Together (PACT) is looking for a new Treasurer to succeed Kate Ayling, who has moved. PACT is also seeking someone to take on the role of its news editor. If you are interested in either roles, please contact Gerald Gresham Cooke on 01798 342151.

Other denominations locally

Methodist: Midhurst. *Minister:* David Muskett *Tel:* 01730 233436. *email:* superintendent@esanddcircuit.org.uk. *Web:* midhurstmethodist.com *Worship:* Sundays 10.00am, and Café Church 1st and 3rd Wednesdays 10.30am.

Roman Catholic: The Catholic Churches of Saints Anthony and George, Duncton, The Divine Motherhood and St Francis of Assisi, Midhurst, and The Sacred Heart, Petworth. *email:* petworth.abdiocese.org.uk. *Tel:* 01798 342169. *Web:* www.petworthcatholic.org

Mass					
Sun	8am	Duncton	Thu	9.30am	Petworth
	9.30am	Midhurst		12noon	Midhurst Convent
	11am	Petworth		6.30pm	Petworth
Tue	10.30am	Petworth	Fri	9.30am	Midhurst
Wed	9.30am	Midhurst	Sat	5.30pm	Petworth

Society of Friends (Quakers): St Anne's Community Centre, St Anne's Hill, Midhurst, GU29 9NN. *Web:* sussexwestquakers.org.uk *Meetings:* 2nd and 4th Sundays 10.30am.

United Reformed Church: Petworth. *Minister:* Revd Anne Lewitt *Tel:* 01798 872535. *Web:* petworthurc.co.uk *Worship:* Sundays 10.30am.



TEDDY TIME IN THE PAVILION TODDLER GROUP

Wednesdays 10.15-11.30am
Pavilion, Graffham Rec

No charge. All welcome. Just come along!

What's on at our village church and chapel

- All residents of and visitors to Graffham are welcome to all services.
- St Giles Church is at the south end of Graffham's Street, near the Downs.
- All Saints' Chapel is opposite Graffham Village Shop.
- Both St Giles Church and All Saints' Chapel are open daily.
- Bell ringing practice night is every Tuesday at 7.30pm.
- See stgilesgraffham.org or Facebook's @stgilesgraffham for any changes.

February				
1	Wed	10.15am	Teddy Time (till 11.30am)	Rec Pavilion
5	Sun	10.30am	Parish Eucharist 3 before Lent	St Giles Church
7	Tue	9.30am	Morning Prayer & Pilgrims at 10	All Saints Chapel
8	Wed	10.15am	Teddy Time (till 11.30am)	Rec Pavilion
9	Thu	7pm	Confirmation Group	The Rectory
11	Sat	10-12noon	Saturday Ringing Practice	St Giles Church
12	Sun	10.30am	Parish Eucharist 2 before Lent	St Giles Church
		4pm	BCP Evensong (winter timing)	All Saints Chapel
14	Tue	9.30m	Morning Prayer & Pilgrims at 10	All Saints Chapel
15	Wed	10.15am	Teddy Time (till 11.30am)	Rec Pavilion
19	Sun	9am	BCP Matins	St Giles Church
		10.30am	Family Eucharist 1 before Lent with refreshments and seed swap (page 3)	St Giles Church
21	Tue	9.30am	Morning Prayer & Pilgrims at 10	All Saints Chapel
22	Wed	10.15am	Teddy Time (till 11.30am)	Rec Pavilion
		6pm	Ash Wednesday Eucharist with ashing ceremony	St Giles Church
23	Thu	7pm	Confirmation Group	The Rectory
26	Sun	10.30am	Parish Eucharist Lent 1	St Giles Church
28	Tue	9.30am	No Morning Prayer or Pilgrims	
March				
1	Wed	10.15am	Teddy Time (till 11.30am)	Rec Pavilion
5	Sun	10.30am	Parish Eucharist Lent 2	St Giles Church
7	Tue	9.30am	Morning Prayer & Pilgrims at 10	All Saints Chapel
8	Wed	10.15am	Teddy Time (till 11.30am)	Rec Pavilion
9	Thu	7pm	Confirmation Group	The Rectory
11	Sat	10-12noon	Saturday Ringing Practice	St Giles Church

What's on in and around the village

January				
27	Fri	2.30pm	Thanksgiving service for the life of Diana 'Bun' Paine, followed by reception	St Giles Church, then Empire Hall
28	Sat	9am-1pm	Petworth Farmers Market	Petworth
		7pm	Burns Night celebration (contact Harriet Rowntree on 01798 867536)	Empire Hall
February				
1	Wed	12.30pm	Graffham Garden Group New Year lunch	Empire Hall
2	Thu	7.45pm	Petworth Fringe presents The Little Unsaid	Leconfield Hall
4	Sat	9am-2pm	Midhurst Farmers Market	Midhurst
		9.30am	Graffham Down Trust work party	Meet at St Giles
7	Tue	2pm	Arts Society West Sussex illustrated talk <i>Adventures of an Archaeologist</i>	Fittleworth Village Hall
9	Thu	2.30pm	Thursday Club talk <i>The Inspector Calls</i> , with raffle and refreshments	Empire Hall
11	Sat	7.30pm	Le Freak – Chic/Nile Rodgers Tribute Band (see page 10)	Empire Hall
10	Fri		Seaford College half-term (to 19 Feb)	
12	Sun	7pm	Folk music night	Three Moles
13	Mon		WSSC schools half term (till 17 Feb)	
14	Tue		<i>Valentine's Day</i>	
		9-11am	Great Feet foot health professional1	Empire Hall
19	Sun	11.30am	Seed Swap Sunday (see page 3)	St Giles Church
21	Tue		<i>Shrove Tuesday – Pancake Day</i>	
22	Wed		<i>Ash Wednesday, the start of Lent</i>	
		12.30pm	Lunch Club ²	Empire Hall
25	Sat	9am-1pm	Petworth Farmers Market	Petworth
March				
4	Sat	9am-2pm	Midhurst Farmers Market	Midhurst
		9.30am	Wisboro' Green beekeepers introduction to beekeeping course (see page 33)	Rudgwick Village Hall
7	Tue	9-11am	Great Feet foot health professional1	Empire Hall
		2pm	Arts Society West Sussex illustrated talk <i>Canal History and Heritage</i>	Fittleworth Village Hall
9	Thu	7.45pm	Petworth Fringe presents State of the Union	Leconfield Hall
11	Sat	9.30am	Graffham Down Trust work party	Meet at St Giles
12	Sun	7pm	Folk music night	Three Moles

17	Fri	7pm	Graffham Garden Group AGM	Empire Hall
20	Mon	6.15pm	East Lavington Parish Council meeting	Seaford Coll
21	Tue	evening	Quiz night	Cricketers, Duncton
22	Wed	12.30pm	Lunch Club ²	Empire Hall
25	Sat	9am-1pm	Petworth Farmers Market	Petworth
28	Tue	9-11am	Great Feet foot health professional ¹	Empire Hall
31	Fri		WSCC schools and Seaford College term ends	

April

1	Sat		Graffham Camping and Caravanning site reopens for the summer	
		10.30am	Graffham Easter Market	Empire Hall

¹**Great Feet foot health professional:** Available to Graffham Health Support Association members only.

²**Lunch Club:** Graffham Empire Hall Lunch Club meets on the fourth Wednesday of the month at 12.30pm for 12.45pm for a home cooked two-course meal and coffee, at £8 a head. Please book by calling Sarah on 01798 867567.

Regular weekly activities (for notes, how to book, etc, see below)

Mondays	9-10am	Fitflows Fitness ¹	Empire Hall
	Daytime-evening	Osteopath ²	Empire Hall
Tuesdays	8.30am-12noon	Post Office	Empire Hall
Wednesdays	9.15-10.15am	Yoga ³	Empire Hall
	10.15-11.30am	Teddy Time toddler group ⁴	Pavilion
	7-8.30pm	Badminton ⁵	Empire Hall
Thursdays	Daytime-evening	Osteopath ⁶	Empire Hall
	10.45-11.45am	Ease Into Exercise ⁵	Empire Hall
	2-4pm	Post Office	Empire Hall
Fridays	9-10.15am	Yoga ³	Empire Hall
	10.30-11.15am	Pilates ⁷	Empire Hall

Empire Hall: For booking and contact details, see Directory, inside back cover.

¹**Fitflow Fitness:** Contact Susie Bush 07870 219956.

²**Osteopath:** Bookings required. To make an appointment, for daytime or early evening, contact Anna Shawcross on 01798 867523 or see www.annashawcross.co.uk

³**Yoga:** Deborah Albone on 07790 867009.

⁴**Teddy Time:** No charge. All welcome. Just come along.

⁵**Badminton:** Contact Louisa Thomas, at louisa9000@hotmail.co.uk. All welcome.

⁶**Ease Into Exercise:** Contact Susie Bush 07870 219956.

⁷**Pilates:** Contact Nicky Capes on 07990 517858 or 01730 812297.

M.E CONTRACTING SUSTAINABLE LAND MANAGEMENT

- Creating and restoring lakes and ponds.
- Ditching.
- Land reclamation and repurposing.
- Installing culverts and sound proofing bunds.

michaelleely@yahoo.co.uk
07786 161666



Straight Line Fencing

With 30+ years' experience, we are the leading fencing and groundwork specialists in West Sussex and Surrey.

Quality workmanship assured, whether you need to keep children or horses in, wildlife out or just want security for your home.

01428 685222

slf@straightlinefencing.co.uk

Norwood Contractors GARDEN MAINTENANCE

Grass and Hedge cutting,
Pruning, weeding,
Planting etc.....

ENQUIRIES:

01798 867 338

Or 07973 370 727



Anna Shawcross
— OSTEOPATHY —

Call Anna 01798 368078

hello@annashawcross.co.uk |

Caytons Limited

Stuart A Hail
Specialist Oil Fired
Heating Engineer

**Boilers
Agas**

**Servicers
Breakdown
Installation**

Tel 01798 344 213

M 07779 11 33 43

Email: caytonsltd@gmail.com

MOLE CATCHING
"NO MOLE, NO FEE"
WASPS / HORNETS

CONTACT ANGUS ON 07828 134086
WWW.ASCOUNTRYSIDESERVICES.CO.UK

Fast Friendly Service
Competitive Prices
Collection & Delivery
Available

located between Lavant and West Dean

barneslogs@gmail.com

07768 986 338



The Old Bakery Golden Square Petworth West Sussex
GU28 0AP www.southdownschiropractic.co.uk



City & Guilds
NPTC

07763 844422

HOOli.

Design | Marketing | Words | Web




01730 816484

hooli.co.uk | hello@hooli.co.uk

Get in touch with Julia and Rachel

Nº1 West Street, Midhurst

 front.hopefully.desktops

Martin Taylor Quality Carpenter, Joiner and Cabinet Maker

*Fully fitted and freestanding furniture a
speciality. Cupboards, Wardrobes,
Radiator Covers, Fitted Kitchens.*

Design service available.

Mobile 07704 524252

Graffham 01798 867471 (home)

martin@martintaylordesign.co.uk

www.martintaylordesign.co.uk

Water Pipe Repair Services Allan Marsh 07470 440836

Water pipe repairs
Water pipe renewals
Plumbing repairs
Water leak detection
Lead pipe replacement
Drain repairs
Outside taps fitted
Sinks, baths and toilets
Driveway and footpath repairs

Curtain Making Service & Soft Furnishings



Please contact Carole Jewell

01730 815144

07764 233234

carolethecurtainmaker@live.co.uk

need help with your pc? Clive Way BA^{hons} Computing

The friendly professional service for your
home pc, laptop and other device nightmares.

I am now based in Wales.

But fear not –

I can still help you with
many problems by
remotely accessing your pc,
mac, phone, ipad or other
electronica.



tel: 0791 7766254

email: cliveway@yahoo.com

HELEN'S AIRPORT CARS

"With US it can often cost less than rail or airport parking"

**Saloons
MPVs
Estates
4 - 8 seaters**



**Reliable
Affordable &
Comfortable
Pre-booked
24hr**

01243 820820

Book Online Now www.airporttaxi.co.uk

24 Sudley Road, Bognor Regis. PO21 1ER



DEEP TISSUE, REMEDIAL AND THERAPEUTIC MASSAGE

Marilyn Ridgway

ITEC, MMTI, MCNHC

01730 812955

andmar2@btinternet.com

Jane Bellinger

Professional Cordon Bleu Chef

Dinner Parties Luncheons

Weddings Canapes

Picnics Buffets

Afternoon Teas Desserts

info@janebellinger.com

www.janebellinger.com

St. Anne's Cottage, The Street,

Bury, RH20 1PA

Tel 01798 839433



Success
No greater gift

Maths tutoring

11+, 13+, Scholarship, GCSE, A Level, IB, Pre-U

www.escry.com

simon.mitchell@escry.com 07850 125 519

CARPET & RUG DRY CLEANING
UPHOLSTERY & CURTAIN CLEANING
STAIN PROTECTION

TEL: 01730 814 965

www.magnadrysouthern.co.uk



MAGNA DRY SOUTHERN

Free Estimates ~ Fully Insured

Matt Wheatley Local Electrician

Part P Approved Contractor

Fully Insured

For prompt & friendly
service please call:

01798 860 799 or

07976 465 974

email:

mattwheatley1971@btinternet.com



BOOKKEEPING SERVICES

for small business and sole traders

VAT RETURNS CIS RETURNS

SELF-ASSESSMENT

GENERAL BOOKKEEPING

Jennifer Sear MICB

Heyshott, Midhurst

T: 07834 765761

E: athenabookkeeping@aol.com



Pescadora's Private Hire

Graffham based Luxury
Taxi Service

07467 521760

Please call, text or email for a quote.
24 hour service available
by prior arrangement.

Pescadorasprivatehire@gmail.com
www.pescadorashire.co.uk



Prompt and Friendly
Telephone Fran or Dean on
07768 986 338

Based in Lickfold
Est. 1990
prismwindowcleaningltd.com



Roger Poat & Partners
Funeral Directors &
Monumental Masonry
Consultants

Duck Lane, Midhurst, West Sussex GU29 9DE

Telephone 01730 812094

(24 Hours)

- Pre-need Funeral Plans
- Private Chapel

Email: info@rogerpoat.co.uk

Michael Miller & Partners Ltd

SMART CARS

PRIVATE HIRE/TAXI SERVICE

Executive Salon & 6 Seater Cars
Chauffeuring Service
Professional, Personal & Reliable
Accounts & Corporate Business Welcome
Airport, Docks & London Runs
Same Day Courier Parcel Service

"Any time, any place, anywhere"

FOR QUOTES & BOOKINGS
PLEASE CALL DOMINIC

0800 44 88 030 / 07823 559099

www.smartcars.uk.com



An award-winning Chartered Building
Company that has worked in the
Sussex area since 1985,
gaining a well-deserved reputation
for professionalism, reliability,
high quality craftsmanship &
project management skills.

Experienced in all types of building
projects, from large commercial to the
sensitive renovation of
listed buildings, bespoke new-builds
or extensions & refurbishments.

Telephone 01243 542056
Email martin@msbc.uk.com
www.msbc.uk.com



West Sussex Logs

Logs cut to size,
all seasoned timber
Two days for delivery
once ordered

Contact:

01730814751

07950035997



KLE Decorators Ltd
Unit C12
New Barn Farm
Funtington
Chichester
West Sussex
PO18 9DA



07880 317071



hello@kledecorators.co.uk



kledecorators.co.uk

We are totally committed to the finest quality of painting and decorating that there is.

Be it the high-end painting & decorating of apartments and offices, refurbishment of kitchens & bathrooms, full interior refurbishments, or renovation works on a listed building, we ensure that all of our work is carried out thoroughly, with due diligence by all our painters & decorators.

Our decorating services include:

- Painting
- Spraying
- Wallpapering
- Specialist coatings
- Traditional paintwork
- Feature walls
- Coving
- Plaster and render repairs
- Woodwork repairs
- Special effects such as graining, marbling, murals



Selling, Letting & Managing properties in West Sussex



02392 632 275
countryhousecompany.co.uk



Directory

DOCTORS			
	Petworth Surgery		01798 342248
	Midhurst Riverbank Medical Centre		01730 812121
	Haslemere Minor Injuries Unit		01483 782334
DEFIBRILLATOR	On wall outside Empire Hall		Code is C240Z
FLOOD ALERT for Lods Bridge	To check river level		bit.ly/lodsbridge
POLICE	In emergency		999
	Non-emergency	101@sussex.pnn.police.uk	101
BURST WATER MAINS	Southern Water		0800 820 999
POWER CUTS	Scottish & Southern Electric		105 or 0800 0727 282
All Saints Chapel Trust	Chairman	Clive Rowntree	01798 867536
Badminton		Louisa Thomas	louisa9000@hotmail.co.uk
Bees / Swarms			
	Wisboro' Green B'keepers	Tom Moore	07984 606214/01798 343470
	Local beekeeper	Murray West	evenings 01798 867048
Chichester District Council			
	District Councillor	Alan Sutton	01243 534734 asutton@chichester.gov.uk
			01798 342452
	Dog Warden	Office hours	01243 534734
		Emergency	01243 785339
Citizens Advice Bureau			03448 487969
East Lavington Parish Council	Chairman	Charles Britton	charles.britton@eastlavington-pc.uk
	Clerk	Amy Harte	07889 979820
			eastlavingtonpc@gmail.com
Empire Hall			
		empirehall.org.uk	empirehall@gmail.com
	Bookings	Sally Blunt	bookings.empirehall@gmail.com
	Promotions	Liz Nicholson	liz.empirehall@gmail.com
	Treasurer	Carole Sargent	01798 344790
	Secretary	Fiona Mackie	empirehall@gmail.com
Empire Lunch Club		Sarah Lydiard-Wilson	01798 867567
Foresters Arms		forestersarms-pub.co.uk	01798 867386
Graffham Archives	Robin Brind	graffhamarchive@outlook.com	01798 867619
Graffham Bellringers		Reverend Vivien	01798 867199
Graffham Bowls Club	Chairman	Sheila Allen	01798 342869
	Secretary	Liz Pegram	01798 867770
Graffham Cricket Club		Bill Barrett	01798 867113
Graffham Down Trust	Chairman	Jim Kirke	01798 867026
Graffham Garden Group		Carole Kirke	01798 867026
Graff'm Health Support Assc	Chairman	Sarah Lydiard-Wilson	01798 867567
	Membership	Tracy Rowe	01798 867020
	Transport		07391 802541
	Prescription collection	Ann Rowney	ann.rowney@icloud.com
	Loan of equipment	Karin Skanberg	07920 091014

Graffham Nursery		School Office	01798 867324
Graffham Parish Council	Chairman	Simon Mackie	simon.mackie@graffham-pc.uk
	Clerk	Vacant	clerk@graffham-pc.uk
Graffham Parish News	Editorial and circulation:		editor.graffhamparishnews@gmail.com
	Advertising:		ads.graffhamparishnews@gmail.com
			See also bottom of inside front cover
Graffham with Woolavington Parochial Church Council		stgilesgraffham.org	
	Priest-in-Charge	Rev Vivien Turner	01798 867199
			hallo@stgilesgraffham.org
	Churchwarden	Ginny Barrett	01798 867113
	Treasurer	Yvonne Churchward	07808 781510
			graffhampcctreasurer@gmail.com
Graffham Rec Committee	Chairman	John Bracey	01798 867760
	Treasurer	Bernard Bayly	01798 867042
	Bookings Sec	Sonya Gillespie	graffhamrecpavilion@gmail.com
Graffham Tennis Club	Chairman	Simon Longman	01798 867317
	Membership	Richard Gyles	01798 867484
	Coaching	Emma Amin	01798 867063
Graffham Village Shop		Jeeva and Vasu	01798 867700
			graffhamvillageshop.co.uk
Graffham Vill'ge Shop Assoc	Chairman	Steve Dover	07770 499223
	Treasurer	Ipe Jacob	ipe.jacob@icloud.com
	Secretary	Henrietta Aparicio	07714 652856
Katherine Maud Guilloid Fund	c/o Graffham PC Clerk		graffhampc@gmx.co.uk
Lavington Park Federation		graffhamanddunton.w-sussex.sch.uk	
Graffham CE Infant School		01798 867324	
Dunton CE Junior School		01798 342402	
Friends of Graffham & Dunton Schools		01798 867324	
Long Bostle Downland Soc		Gillian Brandt	01798 867276
MP Arundel & South Downs		Andrew Griffith	andrew.griffith.mp@parliament.uk
Midhurst Petworth Observer		Nikki Jeffery	01243 534163
National Trust (Lavington Common)			01730 816638
Neighbourhood Watch		Michael Crickmay	01798 867486
Osteopath		Anna Shawcross	01798 867523
Oil Buying Syndicate		Derek Bradnum	derekbradnum@gmail.com
Petworth Food Bank			07501 921617
Pilates at Empire Hall		Nicky Capes	07990 517858
Seaford College			01798 867392
Three Moles		Ollie and Tom	thethreemoles.com 01798 861303
Thursday Club		Secretary Diane Bellis	01798 867444
West Sussex County Council	General enquiries		01243 777100
	County Councillor Tom Richardson		07463 785039
White Horse		whitehorsegraffham.com	01798 867331
Yoga at Empire Hall		Deborah Alborne	07790 867009



JACKSON-STOPS

PROPERTY EXPERTS SINCE 1910



"Mummy, why did we ever live in the city?.."

There is a national surge in demand for houses in the countryside, particularly from buyers moving out of a city. If you are considering the sale of your country property, we would love to hear from you.

Please get in touch with our team in Midhurst to find out more

01730 812357 midhurst@jackson-stops.co.uk
Market Square, Midhurst, West Sussex, GU29 9NJ