

GRAFFHAM NEWS

ISSUE 400

FREE

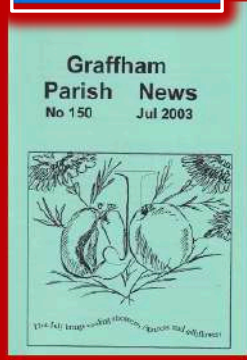
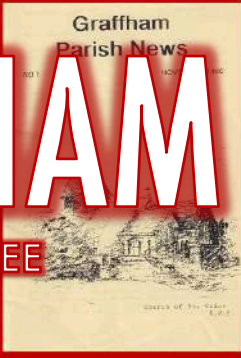
JUNE 2024

Church Editors
Award winner

We're
400
not
out!



PLUS INSIDE:
Your full guide
to this month's
Graffham
Festival 2024





Graffham Parish News is published and distributed free each month to every household in Graffham and East Lavington by the Parish of Graffham with Woolavington.



Please support us: If you enjoy reading this magazine, then please make a contribution towards its costs through a monthly or one-off online donation – just point your phone camera at this QR code or go to bit.ly/GPN-donation



Archives: Back copies can be viewed online at bit.ly/stgarchive1

Subscriptions: If you live outside the parish, you can receive copies by mail by taking out an annual subscription for £36. Contact the editors for full details.

Advertising: We love our advertisers! If you are interested in being one of them, please contact Philippa Sanders (below) or email ads.graffhamparishnews@gmail.com

Copyright: All content is © *Graffham Parish News* unless otherwise stated and may not be reproduced without the editor's written consent.

Contributions and contacts: We're always pleased to hear from you at editor.graffhamparishnews@gmail.com

- Michael Blunt (left) 07711 997487
- Bill Barrett (right) 07443 501091
- Philippa Sanders 07853 921825



Deadline for July edition:

14 June.

Printed by Parish Magazine Printing, Holsworthy, Devon EX22 6TD.





Editors (from left) Michael Blunt, Philippa Sanders and Bill Barrett.

Read all about it – this is our 400th edition!

Editor Michael Blunt marks a milestone for your monthly Graffham Parish News

GPN
400

This is a special edition of *Graffham Parish News* – our 400th. We hope you enjoy it even more than usual! Inside, besides all our regular news and reports, including the full programme for this month's Graffham Festival 2024, we take an admittedly self-indulgent look back at the history of your favourite village news monthly (see page 14) and key events in the community since the birth of *Graffham Parish News* in November 1990 and its forerunner newsletters going back a further 15 or so years (see page 24). But we start with the mag as it is today.

As you most likely know, *Graffham Parish News* is published every month for the villages of Graffham and East Lavington by the Parish of Graffham with Woolavington. While it is therefore strictly a church magazine, we try to cater for the entire community, whether you attend St Giles regularly or whether you are a

▶ *Continued on next page*

From Andrew Griffith, our MP, for Arundel and South

Downs: Huge congratulations to all at *Graffham Parish News* on your 400th edition! Living near to Graffham, I look forward to receiving my copy each month and reading about what is happening in our community. It is remarkable just how busy Graffham and East Lavington are – there's always so much going on! A free parish magazine, supported by local businesses, is an important way to connect residents.

GPN
400

▶ *Continued on from previous page*

Buddhist or atheist. Our aim is to include in these pages everything we feel our neighbours would want to, and should, know about this lovely place we call home. Since Bill Barrett, Philippa Sanders and I took over as volunteer editors from the January 2022 issue – just 30 editions ago! – we’ve tried to build on the solid foundations laid by our predecessors, by creating magazines that would not be out of place on any news stand: produced to professional standards, attractive to the eye, and interesting and easy to read.

I spent the first years of my professional life working as a journalist in the then flourishing local and regional press, where “accuracy, fairness and balance” were drummed into me, along with the publisher’s maxim that “names and faces sell newspapers”. Those are good guidelines for any publication like this, too.

We welcome feedback from you, our readers – emails are welcome to editor.graffhamparishnews@gmail.com – and thankfully most of what you send in is positive. Our peers seem to like what we do, too – we were delighted a year or so ago to be recognised as one of the best parish mags in the UK by the Association of Church Editors, the equivalent of an Oscar in this field.

Producing this kind of publication is very much a team effort. Kudos is owed to our stable of talented, brilliant and highly valued regular contributors who help us write the content – all 12,500 or so words of it per edition. Hats off too to the score who volunteer to pop the magazine through your letterboxes each month, come rain (mainly this past year) or shine. Thanks in particular to our advertisers, without whom we could not exist in our current format. The revenue from their ads enables us to produce the magazine free for you, our readers. So please think of them when you need local tradesman or other suppliers.

We hope that you like this special 400th edition – and, with God’s speed, the 400 and many more issues that will follow.

From Tom Richardson, our West Sussex County Councillor, for Rother Valley ward:

I represent many villages on West Sussex County Council, and *Graffham Parish News* has to be among the best community magazines around. It’s a great way too for me, as a local businessman, to keep in contact with my customers. Congratulations on your 400th edition – though you’ve still a long way to catch up with the Three Moles, which has been pulling pints for 150 plus years!

**GPN
400**

Writing from the Rectory: Wilderness or garden?

The title of a poem by Rudyard Kipling, *The Glory of the Garden*, provides inspiration for the flower display in St Giles Church for this month's Graffham Festival 2024 (see centre section).

We will experience this glory in the church all day, every day of the festival (14-23 June) and in so many other Graffham gardens open to view during its second weekend.

Alongside other arts, like music, painting, sculpture, pottery and poetry, gardening is an art of its own, a feast for the senses juxtaposing colour and shape and scent to create living environments that inspire, calm and intrigue. It's great to celebrate gardeners' horticultural creativity in this way.

Gardens are not the only living spaces in the festival programme, however. A different dynamic created the landscape of St Giles' churchyards. These sacred spaces, the resting places of Graffham residents of past centuries and more recent times, are of no less inspiration, calm and curiosity than a cultivated garden, shaping itself according to the natural impetus of local flora, in conjunction with its dedicated purpose as a burial ground.

Open during the Graffham Festival and every day of the year, 156 recorded species of plant-life provide testament to

▶ *Continued on next page*



St Giles is taking part in the national *Love Your Burial Ground* week, which runs from 8 to 16 June, overlapping with Graffham Festival 2024.

In our village churchyards, wildflowers are now being allowed to grow, rather than all being mowed down. Local botanist Jonathan Simons has so far identified a staggering 156 species of plants growing there (see page 5).

Churchwardens Ginny Barrett and Cindy Bradley said: "We are proud of our churchyards and most of the graves look lovely. We would like June and *Love Your Burial Ground* week to be an opportunity to remove old, faded or broken items and plastic and glass ornaments from the graves, so everyone can see our community God's Acre as a natural environment.

If there are any items we are unsure about we will place them in a box beside the gate.



► *Continued from previous page*

its wondrous variety (see opposite page), a special kind of wilderness filled with natural beauty that is worth wandering through and reflecting in – and perhaps considering the question of where there should be wilderness, and where there should be garden? People have a natural inclination to garden, to bring order out of riotousness in a managed way, introducing straight lines or sweeping curves and planting species in all shapes and sizes to delight the eye. Make your garden too ordered, too regimented, and it loses exuberance. Neglect your garden, and it soon returns to the wild.

Likewise with lifestyle. Manage life too closely and it becomes constricted. Consider choices insufficiently carefully, however, and life becomes chaotic. Christ is found both in the wilderness and in the garden, each with its own particular challenges and potential to reflect on and grow in faith and understanding. When wandering through our village on the ‘Graffham gardens pilgrimage’, therefore, pause to consider what needs to be pruned and contained or left rambling to bring vitality to your own spiritual wellbeing and allow you to blossom. A well-ordered festival born of exuberant creativity provides ample opportunity – what a joy to look forward to!

Many thanks to all responsible for cultivating Graffham Festival this year – and many congratulations too to *Graffham Parish News* on this, its 400th edition! Long may both continue.

Every blessing,



Reverend Vivien



Priest in charge: Reverend Vivien Turner
hello@stgilesgraffham.org 01798 867199

Churchwardens: Ginny Barrett 01798 867113
Cindy Bradley 07787 516522

Safeguarding Officer: Howard Pescott
01798 867029 safeguardinggraffham@gmail.com



stgilesgraffham.org



@stgilesgraffham

St Giles adds web page on churchyard flora

St Giles Church's website has a new section cataloguing the 156 types of flora identified in its churchyard in its latest ecological survey – at stgilesgraffham.org/churches-count-on-nature/

Clicking on a link on the page takes you to a full database, listing each plant species recorded there by local expert Jonathan Simons, with its English and scientific name, its family and location, and, by clicking on the eye symbol on the right, a link to further information about that particular species.

The pages were designed and created by Sisley Turner, who provides the parish with web support.



The home page of the section in St Giles' website on the plant species found in the churchyard (above) which links to its full flora database (below).

Web	English name	Scientific name	Status	Life form
👁	Alkanet, Green	Pentaglottis sempiterna	Introduced	Herb
👁	Apple	Malus pumila	Native	Tree
👁	Ash	Fraxinus excelsior	Native	Tree
👁	Avens, Wood	Geum urbanum	Native	Herb
👁	Bay	Laurus nobilis	Introduced	Tree
👁	Bedstraw, Hedge	Galium album	Native	Herb
👁	Bedstraw, Lady's	Galium verum	Native	Herb
👁	Bee, Honey	Apis mellifera	Native	Insect

FAMILY FRIDAYS are back at Graffham Rec

Dear Graffham and friends,

Come and join us 4-8pm every other Friday in June and July (21 June, 5 & 19 July) to connect, chat and relax in good company with some communal childcare.

Bring a blanket, picnic dinner, stuff for the BBQ (coals will be hot from 5pm), good Dad jokes – and sunshine! The pavilion bar will be open for refreshments and it's club night for Graffham Tennis Club, so don't forget your rackets. We would love to hear from you, so do let us know if you are thinking of coming.

Any thoughts and ideas are most welcome.

We hope to see you there!

For further information etc, email graffhamrecpavilion@gmail.com

Pauline Dover: 1918-2024

Pauline Dover (née Squires) died peacefully at Barlavington Manor Care Home, on 23 April 2024. Having been born in 1918 before the end of World War I, she was 105 years old. As such, she was one of the oldest residents in the district, if not the oldest, and among the 500 longest-lived throughout the country. She was a frequent visitor to Graffham, where son Steve, who lives in The Street, is Chairman of Graffham Village Shop Association. She was still driving until four years ago, making her one of the oldest driving licence holders in Britain.



Born in London, she travelled extensively from the age of 10, when, with her mother and sister, she visited her father in Khartoum, where he was working. The journey to the Sudanese capital took some three weeks, by sea and rail. She earned an honour's degree in Ancient and Medieval History from University College London in 1939, but her graduation ceremony was cancelled because of World War II's outbreak.

After the war she trained as a physiotherapist. She met oil engineer Nick Dover while they were separately both visiting Cornwall. She joined him in Maracaibo, Venezuela, where he was stationed. Steve and his brother were both born there. They returned to the UK in 1959 and settled in Woking. Pauline started collecting her state pension in 1978. She and Nick had moved the year before to Sway in the New Forest so he could indulge his passion for sailing. Nick died 20 years ago, but Pauline stayed in the New Forest until three years ago when, at 102, she moved to a supported living bungalow at Barlavington Manor, to be closer to Steve. She continued to do *The Times* crossword and played Scrabble to the end, although arthritis limited her ability to play the piano.

A thanksgiving for her life will be held at St Giles on Friday 21 June at 11.30am.

Like to know how to give emergency first aid?

Graffham Health Support Association is gauging the level of interest among villagers for more first aid courses. It ran an initial first aid course last year, which proved very successful. Its committee is now considering offering a second course, on emergency first aid, depending on how much interest there might be in participating. If you are interested, please contact Ann Rowney at ann.rowney@icloud.com





Three of the 'finger post' signs in the village are in the throes of being restored. The work is being carried out on behalf of Graffham Parish Council by Tim Ralph, of Ralph Restorations, Ashington, who has recently given fresh life to the signs in neighbouring East Lavington. As *Graffham Parish News* went to press, he had removed the sign fingers and circular tops for treatment in his workshop after cleaning and giving a new primer coat of paint to the posts themselves. Three of them are receiving this treatment – opposite the village shop, pictured here, and at the Pound and March junctions. The remaining two in the parish were deemed not needing such intense restoration at this stage.

Village shop association sets date for AGM

Graffham Village Shop Association (GVSA) holds its annual general meeting on Tuesday 2 July at 7pm in the Empire Hall. The agenda and other papers for the meeting will be circulated to shareholder members in advance.

The GVSA owns the premises operated by Jeeva and Vasu, the unit alongside currently used by picture framer Stephanie Marx and the Chapel View residential house. All three are leased out and the association has little involvement in the day to day running of the businesses.

As their landlord, however, the GVSA's committee is responsible for the overall maintenance of the properties, for collecting rents owed by the lessees, enabling it to repay the bank loan which financed the redevelopment of buildings in 2015. It also considers improvements which will benefit the community as a whole and for safeguarding these vital village assets for the long-term future.

Villagers are encouraged to participate in the GVSA by becoming shareholder members. For more details, please contact Neil Mclean on admin@gvsa.uk.



NESTLED IN THE HEART OF THE SOUTH DOWNS

T: +44 (0)1798 867331
E: INFO@WHITEHORSEGRAFFHAM.COM
W: WWW.WHITEHORSEGRAFFHAM.COM
@WHITEHORSEGRAFFHAM



Graffham's equivalent of the Harrod's New Year Sale – Graffham Garden Group's spring plant sale – had green-fingered punters queuing up from the front door of the Empire Hall to approaching the village shop car park, on Saturday 11 May, all eager to pick up healthy home-grown young vegetables and flowers for planting out. The committee show off some of the wares up for grabs before the crowd flooded in.

Roger re-elected as Graffham's Chairman

Roger Coakes was re-elected to serve another year as Chairman of Graffham Parish Council at its meeting on Wednesday, 8 May, with John Bracey as Deputy Chairman. A report on the council's annual parish meeting, at the Empire Hall on Wednesday 22 May, will be carried in next month's edition.

A warm welcome to Arielle Lilac Summer!

Arielle Lilac Summer Cimpson was baptised at St Giles Church on 28 April – six months after moving to the village with her parents Dane and Scarlett Cimpson. Scarlett said: “Having moved here in October, we wanted Arielle to be baptised in our new local church. She has her own special connection with the village already, which we think is lovely, with cottages here sharing all three of her names!”

Why Arielle? Scarlett explained: “Arielle in Hebrew means ‘Lion of God’ – which led to us choosing the name for her as we love this meaning so much.”

Arielle, their first born, had arrived on 29 June, just four months before the family moved into Red Oak, opposite Pescods in The Street.

The baptism, with two Godmothers and two Godfathers in attendance, was conducted by the Rev Vivien.

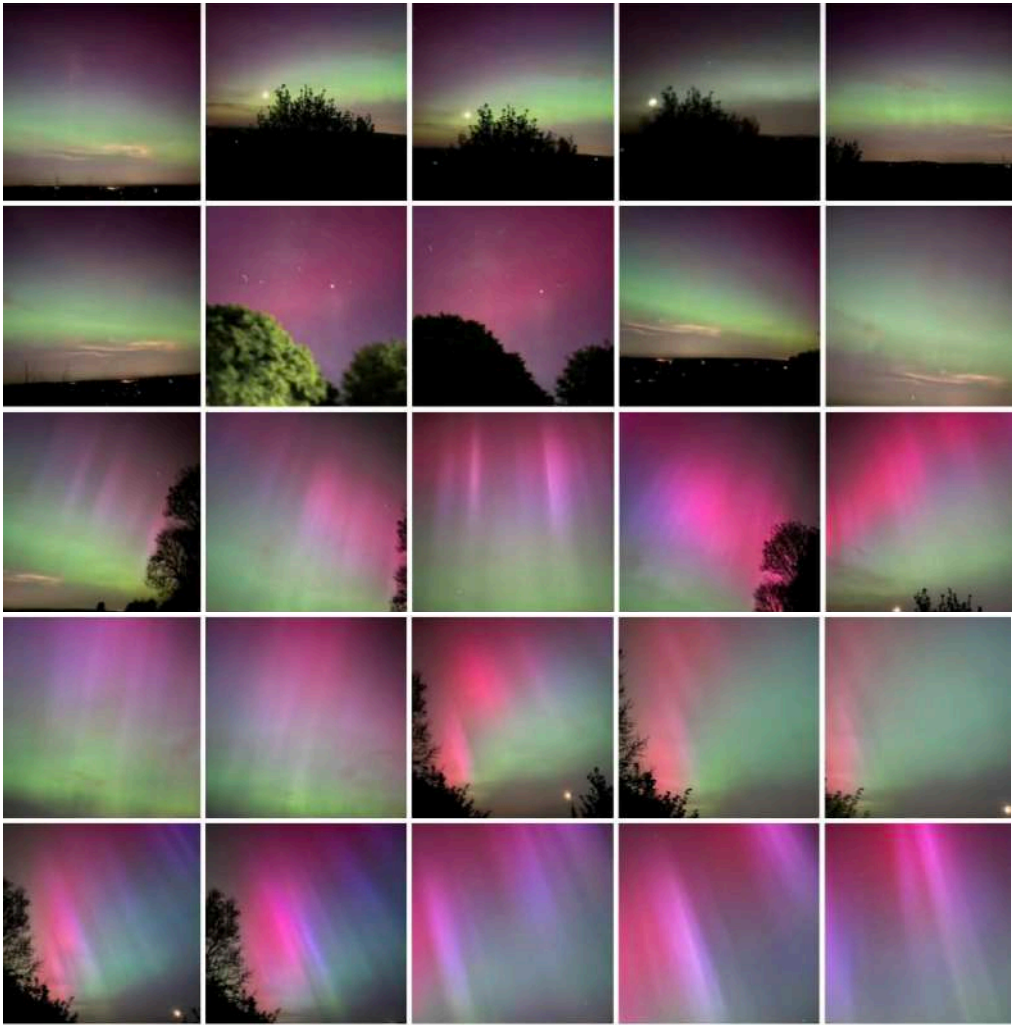


Enjoy our sun soaked garden this summer

Have a refreshing drink, dine alfresco and enjoy one of the many amazing events we have lined up for you - there really is something for everyone!

EAT. DRINK. ENJOY. STAY AWHILE





The Aurora Borealis made a rare appearance in the skies over Graffham and East Lavinton – along with most of the rest of the UK – on the late evening of Friday 10 May. Thanks to © Tracey Carr for this amazing compilation of photos posted to Facebook’s Graffham Noticeboard – and to the many others who shared pictures there or directly to *Graffham Parish News*. Sorry we could not feature them all. Experts say a display like this is only visible in this part of the world every quarter of a century or so. Tracey, and other photographers, enhanced the colours visible using the ‘night time’ setting on her camera phone. She was alerted to the likely appearance of the Northern Lights by an app on her phone, while others were tipped off by friends or relatives.



Jumpers carry knitter Diana to the 'purly' gates

The six pallbearers at the funeral of Diana Kingsmill, held at St Giles Church on Tuesday 7 May, were drawn from her five children and 14 grandchildren – all of whom were wearing jumpers she had knitted, on what was one of the warmest days of the year so far. Most of her relatives and many of her friends among the 130 mourners, including the Rev Vivien, who conducted the service, and members of the undertaker's team, also sported hats, scarfs or tops Diana had made herself.

As reported in last month's edition, prolific knitter Diana died on 15 April, aged 90, after living for 65 years in Graffham.

ClearSkies
Travel Insurance

- No upper age limit
- Medical condition specialists
- Waiting list cover
- Cruise cover option
- Single trip, multi trip, backpacker

01428 772 722

clearskiestravelinsurance.com/intro/graffham

FORESTERS GETAWAY
Cosy Country Cottages

B&B Holiday rental
Graffham village
5* Livery
07768 697427



Westerlands shares its future plans at open day



Westerlands staged its first community open day on 20 April to share the 20-year vision and estate plan it has been writing for the South Downs National Park. It included two walking tours around the 500-acre estate and farm with visitors also able to see



its trekking yard, art studio and ‘wildfit’ gym along the way – plus some of its new born lambs. Managing Director Antonia Jamison said: “It was a wonderful event which we hope will be the first of many.”



Fittleworth pips Graffham to regional shop title

Graffham Village Shop has narrowly missed out on being named the best local store or post office in the South East of England. As reported in April’s *Graffham Parish News*, Jeeva and Vasu’s enterprise was one of only four retail outlets throughout the region shortlisted for the top honour – but neighbouring Fittleworth Stores received more votes to get through to the national final.





1977 July: Parish News' first archived edition.

1990 November Graffham Parish News' Edition 1.

1991 August, #10 – one of many sketches of homes.

1992 December #26, the first hand coloured cover.

Bringing you the village's news for 400 editions

**GPN
400**

This is the 400th edition of Graffham Parish News since the magazine first popped through the village's letterboxes in late 1990. Here, editor Michael Blunt looks back at the history of your favourite monthly community news magazine and its forerunners.

This is the 400th edition of *Graffham Parish News* since the magazine first hit the streets with that title back in November 1990 – but its forerunner newsletters date back a decade and a half earlier. So, in one guise or another, we've been chronicling the life and times of this special corner of Sussex for nigh on half a century.

The most complete collection of our back copies is held by the Graffham Archive, in its vaults at Graffham Infants School. The earliest of them harks back to July 1977. It was just called *Parish News* back then – no Graffham in its title in those days. Whether even earlier editions were published before then, well, maybe some of the village's longest lived residents might be able to let on.



First editor of our forerunner *Parish News*, the Rev David Grant, Rector from 1975 to 1987.

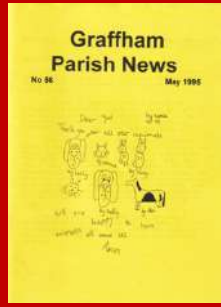
The archive holds every edition printed since 1986. Those initial issues were not numbered at all. It was only in November 1990, with the birth of *Graffham Parish News* itself, that numbering of editions was introduced. And while today the magazine is produced every month, in the past there were occasional lapses – most Januarys, or when the parish was without a priest, when the editor was on holiday or, most recently in April 2020, when the pandemic made it impossible to produce an issue. The first



**1993 February
#28, featuring
Chelsea Cottage.**



**1994 November
#50 – wildlife was
often on covers.**



**1995 May #56,
with a prayer
by a brownie.**



**1996 December
#75, another
coloured cover.**

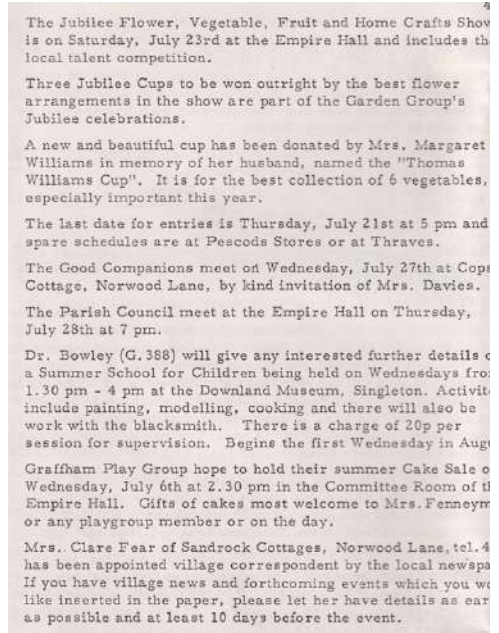
identified editor of *Parish News* (sans *Graffham*) was the Rev David Grant, Rector of St Giles from 1975. The earliest of ‘his’ magazines in Graffham Archive is that edition from July 1977 (previous page top left).

It was A5 in size, like today. The colour cover was bought in from a stationer specialising in this kind of thing – with, somewhat bizarrely for our photogenic village, a scene of market day in Helmsley, North Yorkshire, taking pride of place.

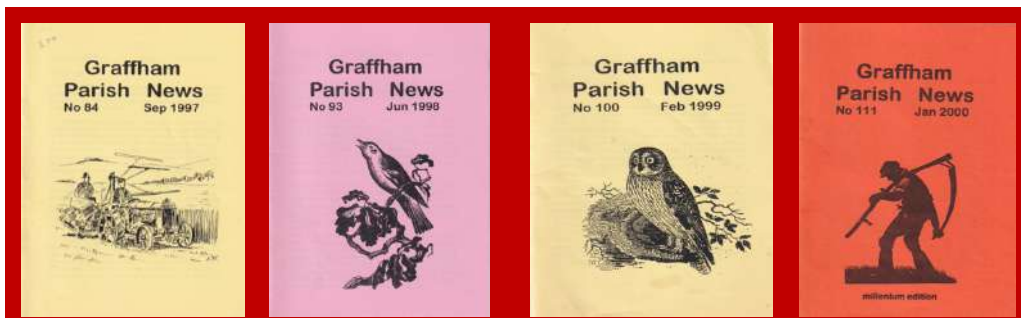
It proclaimed the month, but not the year and no edition number. Inside, the contents were all very ‘churchy’.

It opened with four pages, typed by the vicar himself – a letter from the rectory on a biblical theme, the month’s schedule of church services and flower arrangers, a report from the Mothers’ Union and of recent fund-raising activities, with just one page of ‘other’ village news – brief snippets on the forthcoming Jubilee Flower, Vegetable, Fruit and Home Crafts Show, the Graffham Junior Stoolball Tournament and single paragraph updates on various other village organisations and events. No pictures, just text. These four pages were printed by Graffham

▶ **Continued on next page**



**Just one page of village news in 1977's
first archived edition of *Parish News*.**



1997 September #84, harvest time on the cover.

1998 June #93 – birds were often on the cover.

1999 February – our centenary edition.

2000 January #111, the Millennium issue.

▶ *Continued from previous page*

School, then stapled inside the cover, along with 24 pre-printed pages of Chichester News from the cathedral and other content circulated by the Church of England. That was the formula for the *Parish News* for the next 13 years – four typed pages of Graffham articles, with no local pictures plus a few more pages of content produced by Chichester diocese, all stapled inside a bought-in cover bearing a photo of scenes from across Britain – Devon moors, Scottish oil rigs, the Brecon Beacons, Manchester cityscapes and so on. None had any Graffham relevance.

In 1990, a few years after the Rev Keith Hyde-Dunn had succeeded David Grant as rector, a committee headed by the then churchwarden, the appropriately named Peter Parish, discussed starting a proper parish magazine, and former headteacher



Paula Burke, Graffham Parish News' first editor, from 1990 to 2007.

Paula Burke, living in Nonnington Lane, was invited to be its editor. Looking back, she recalled: “After a pause for horrified contemplation, I decided that it might be not only a challenge but possibly rather fun!” It must have been enjoyable, for it was a role she performed for 17 years.

With the new editor came a new title for the publication – *Graffham Parish News* came into being. Paula's debut edition was produced in November 1990 (page 14, top second from left) – with two other innovations immediately apparent on its front cover. It carried an issue number for the first time – No 1. And it had a local image – a pen and ink sketch of St Giles Church, by ERR,



**2001 June # 127 -
with African wildlife
on the cover.**

**2002 June #138,
dreaming of a hot
summer.**

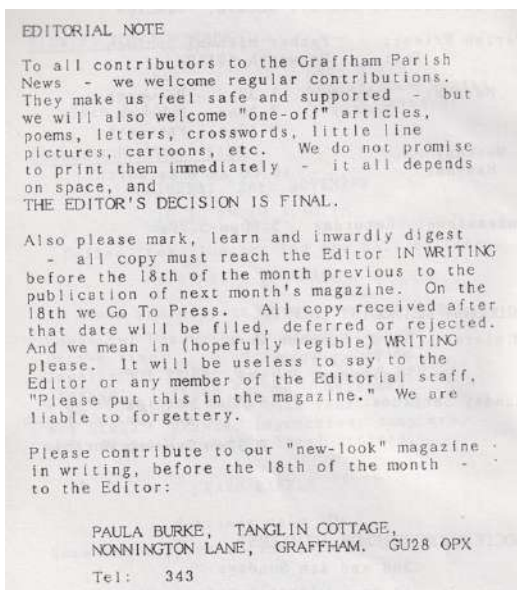
**2003 July:
Clocking up 150
editions.**

**2004 August #
162 - with a 45p
cover price.**

whoever he or she was! Inside were still more novelties, including advertising for the first time. Some of those featured are familiar today such as The White Horse and Eastwood Farm. Mrs Campbell offered B&B at Melrose, Graffham Service Station (sited where the village shop stands today) proposed overhauling your car, while Pescod's Stores promoted its delicatessen with local bacon and its post office.

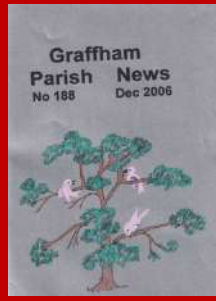
That debut edition featured 40 pages of Graffham content and just four from Chichester diocese. The new editor appealed for regular contributions and one-off articles, though warning, in capital letters, that 'the editor's decision is final' – just as it is today!

The magazine widened its scope way beyond the church to include articles on all aspects of Graffham life along with plenty of items of general interest. There were reports from Graffham Stoolball, Tennis, Bowls, Cricket and Thursday Clubs, the District Nursing Association (today's Graffham Health Support Association), Graffham Brownies and Guides, Graffham Garden Group, Graffham Down Trust, the local schools, the Graffham Rustics amdram troupe and Women's Institute.



The editor's letter in edition number one.

▶ *Continued on next page*



2005 October
#175 – local pets
often featured.

2006 December
#188 came with
a silver foil cover.

2007 December:
Paula’s 199th and
last edition.

2008 February:
Mary Butterworth’s
first edition, #200.

▶ **Continued from previous page**

There was a crossword puzzle and a page for children, contributions from local vets and lawyers and from a motoring expert and a look back at the Graffham of 75 years before. Alan Longworth wrote a gardening column under the pen name Affle, and Derek Wiseman provided regular weather reports. There were household hints and recipes (for chilli bean casserole in edition No 1). It was an all-round good read – hopefully like its successor today.

That first issue was printed, as *Parish News* had been, by Graffham School, but, as it had ten times more pages than before, “to their dismay it took a considerable time longer”. Villager Tim Abbott, who lives now at Cobwebs, close to Graffham Village Shop, worked then at local printer Trendell’s and “came to the rescue”. Diana White continued to type all the contents and the school produced the cover and first four pages of the magazine, with Trendell’s printing the rest. A team – mainly Paula, Diana and Jan Buckley – then stapled the sections together.

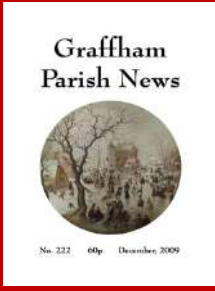
As if that wasn’t labour intensive enough, when the magazine first started including colour pictures on its front cover, the colouring was all done by hand – each one of the 240 copies individually – by a team of volunteers.

A new successful formula had been laid down which Paula and her team followed

From Jeeva and Vasu, Graffham Village Shop:

Congratulations on making 400 not out – Brian Lara’s top score in an international! Many describe Graffham Village Shop as the community’s hub – but the same could be said of *Graffham Parish News*. We are pleased to be a distribution point for the magazine – which is always one of the most popular items we stock. Here’s to the next 400!

GPN
400



2009 December, edition 222 – a Christmas scene.



2010 March #225 – animal drawings time.



2011 July #241 – old Graffham wildlife?



2012 January #247, colour photos on cover.

for the next 17 years. With the final edition of 2007, No 199, she declared she had “run out of steam” and handed over her editor’s chair to Mary Butterworth, then of High View and now of Nottingham. Paula passed away seven years later, at the end of 2014, aged 89, with the February 2015 edition of *Graffham Parish News* (issue 284) carrying five pages of tributes.

From the start of her 10-year tenure as editor, Mary brought her extensive IT skills to the role. While Paula had assembled each issue on pieces of paper on her dining table, Mary adopted the latest computer-based desktop publishing for the job.

She said: “I will always be grateful to Father Mark Gilbert (then Rector of Graffham and now Dean of Petworth) and (the late) Peter Pine-Coffin (then churchwarden) for inviting me to edit *Graffham Parish News*. It was among the most rewarding periods of my life for all sorts of reasons, not least because I got to know so many Graffham people through the magazine and spin-off involvement in the community.”

For her first four years or so in the role Mary stuck to the mainly black-and-white-only magazines of her predecessors, introducing colour photos as a regular front cover feature from her January 2012 edition (issue 247), with between four and 16 pages of full colour inside, made possible financially by increased advert-

▶ *Continued on next page*



Mary Butterworth pictured at the end of her 10-year tenure as editor, in 2017.



2013 July #265:
Farewell to the Rev
Steve Gray.

2014 May – it
says #215 on the
cover but its 275.

2015 December
#294 with people
on the cover.

2016 June –
edition number
300.

► *Continued from previous page*

ising content and technically by changing printer – to Sarum Graphics, of Salisbury. Mary handed over her editor’s chair to Rozie Apps, a journalist working on horticultural magazines and living then at Westerlands. Rozie’s first edition was



Rozie Apps, editor
2018 to 2021.

issue number 319, of January 2018. Ahead of her taking up the reins, a decision had already been taken to scrap charging for them magazines. It is not clear when a cover price had been introduced. Some copies from Paula Burke’s time refer to an annual subscription of £5, with that rising to £12 (or £1 a copy) by the end of 2017. However, collecting subscriptions had become so tortuous that it was decided to rely on advertising revenue to cover the magazine’s production costs, rather than making readers pay for it – a simpler approach that still works today.

Among the other changes Rozie made was that of printer – moving to specialists Parish Magazine Printing, close to Devon’s border with Cornwall, a switch that made it

From Charles Britton, Chairman of East Lavington Parish

Council: Congratulations to *Graffham Parish News* on its 400th issue. It has been really interesting and rewarding to see how the magazine has flourished over all these years. It is always a mine of information on what is going on locally as well as regular articles such as local history. So, well done and please keep up the good work!

GPN
400



2017 December:
Mary Butterworth's
final edition, #318

2018 January:
#319 - Rozie
App's first.

2019 December
#347 - art
on the cover.

2020 March,
edition 350,
daffs and St Giles.

possible to feature colour on every page. Rozie stepped down as editor at the end of 2021, to be succeeded by a trio – me along with long-time Graffham residents Bill Barrett and Philippa Sanders. As with most new editors, we tweaked the magazine's design including a new style front cover, focussing, usually, on people. As a former journalist, I felt *Graffham Parish News* should have more of a look and feel of the sort of magazine you'd buy from a news stand.

Philippa set about signing up more advertisers to enable the new editorial team to increase pagination – up from the typical 48 pages during Rozie and Mary's time to a record 76 pages in December 2023.

As under Mary and Rozie's tenure, today's magazine is edited and designed on computer, with the final proof sent electronically to our printers. They take a day or two to run off the 400 or so copies on our manifest and then hand the two or three boxes of compiled and stapled magazines to couriers DHL for delivery back to us. We in turn bundle them up and pass them over to our band of 20 or so distributors who post them through the letterboxes of every address in the neighbourhood. Some have 30 doors to pop them through, others just a handful. A few readers generously make a donation towards the magazine's production costs. Some who

▶ *Continued on next page*

From Roger Coakes, Chairman of Graffham Parish Council:

On behalf of Graffham Parish Council, I would like to offer congratulations to *Graffham Parish News* on the occasion of its 400th edition. There can be few, if any, better parish magazines in the country. It is an indispensable source of information for all the residents of Graffham. Well done to its editors past and present and their teams.

GPN
400

BEAR

PETWORTH

20th Century Design, Antiques, Home Accessories and Gifts



Stockist of Santa Maria Novella, Leach Pottery, David Mellor, Ichendorf, Kalinko and Villa Bologna.

Open Monday - Saturday, 10am - 5pm
10A New Street, Petworth, GU28 0AS

www.bearpetworth.com
Tel: 01798 651066

“This is a school that really does empower”

Tatler Schools Guide 2022

VISIT US!

Please call 01798 831456 or email:

sobrien@dorsethouseschool.com

to find out more or to make an appointment.

Independent prep school for children from 4 - 13

Morning minibuses and after school clubs

DORSET HOUSE SCHOOL

Bury • Pulborough

www.dorsethouseschool.com





**2021 December
#370 – Rozie
Apps' last issue.**

**2022 January
#371 – current
editors' first.**

**2023 June #388 –
Graffham marks
the coronation.**

**2024 June –
edition 400
... and counting!**

► *Continued from previous page*

have moved away from the village pay an annual subscription to have copies sent to them by post. The back copies we keep online at stgilesgraffham.org/graffham-parish-news are among the most frequently viewed items on the church website.

The magazine costs an average of around £1.40 a copy to print, depending on how many pages it contains, with the entire sum covered by those lovely advertisers, without whom we could not exist in our current format. So please think of them when you need local tradesmen or other suppliers.

A few people ask whether we should still be producing a printed magazine in these days when there is so much focus on our planet's finite resources and with the growth of social media. While we haven't done any specific research among our readers, anecdotal evidence is that the vast majority much prefer reading this organ on paper rather on screens and like to leave copies on their kitchen sideboard or wherever for future reference, before sending them off for recycling.

One day, that will surely change and *Graffham Parish News*, like many other village magazines, will only be available online before disappearing altogether. Will that take another 400 editions to come about?

From Antonia Jamison, Managing Director, Westerlands:

As a member of the Graffham community and also a local business owner, *Graffham Parish News* has always and continues to be a crucial source of information for me personally and an important channel for sharing what we do at Westerlands with the local community. It is like a local Bible for what's on and we wouldn't be without it.

**GPN
400**

Bygones special: What's made our headlines

In its 400 editions to date, and those of its predecessor newsletter for a further 15 years or so, Graffham Parish News has recorded all the key events across the community. Joint editor Bill Barrett tracks some of the most noteworthy.

GPN
400

1977: Graffham Garden Group re-establishes its annual flower show, cancelled in 1976 (the first time in GGG history) because of the drought. The Thursday Club is established between 1975 and 1977 to replace the recently dissolved Graffham Women's Institute.

1979: After a 79-year hiatus, a new band of bellringers is formed at St Giles, led by Trevor Finch and Kate Bertram. There being no male heirs, Kate (his daughter) and her husband Colin Bertram rename their "Woodside" home "Ricardo's" to perpetuate the late Sir Harry's name. Ballet classes, run by Biddy Dimmer, begin in the Empire Hall. Having been established in the 1940s, Graffham Campsite appoints its first warden.

1980: Roger and Jan Mozley buy the village shop, Pescods, from John and Hilda Holland. Ted Fenneymore retires as Headteacher of Graffham School after 15 years. Tony Smith takes over.

1981: A team led by Dave Ashby resurfaces the tennis courts. The White Horse acquires a Space Invaders machine.

1982: St Giles' four bells are returned after refurbishment, with room made to accommodate two more when funds become available.

1983: The Empire Hall committee takes over the building's freehold from the Lavington Estate. Professor Marian Bowley, Padoma Scott and Muriel Samways found Graffham Downland Trust, to save the natural turf from tree-planting and ploughing. The first GDT committee is chaired by Michael Paterson, who provides his legal services free of charge.

1984: Angela Connor replaces Tony Smith as Headteacher of Graffham School. Two more bells are added to the four already at St Giles', but a 'false ceiling' has to be inserted in 1985 as the new six-bell peal is too loud for the congregation inside the church.

1986: Two Graffham Downlands County First School pupils, Owen Lambert and Tracey Kewell, meet Prime Minister Margaret Thatcher when she opens ICI's conference centre in Fernhurst. Chris Major becomes chairman of Graffham Tennis Club, a post he is to hold for 25 years.

From Helen Martin, Head of Graffham Infants School:

**GPN
400**

When I was first privileged to take on this amazing downland village school in 2007, I was keen to become immersed in the life and culture of this beautiful place. At that time, we luckily had lots of stuffed animals used when the school was a field study centre and kindly donated by members of the governors and village. One was a very large badger, which sat atop a cupboard next to the staff toilet! Inside this loo, besides an old photo of the Rt Hon Margaret Thatcher, I found many older editions of *Graffham Parish News*, all full of the adventures of the village, amazing experiences and key people who have been our friends and colleagues, past and present. We still continue to champion and catalogue in the magazine's pages our 177-year-old school – and look forward to all of the exciting times to come!

1987: Rev Keith Hyde-Dunn becomes Rector of Graffham with Woolavington following the retirement of Rev David Grant. Much of the village is without electricity for almost two weeks in October following the Great Storm.

1988: Chemist Charles Reece, of Graffham's Heath Ridge and ICI, is knighted for services to industry.

1990: Rev Charles Johnson retires as Seaford College Headmaster after 46 years. He is succeeded by former England rugby union international Charles Hannaford.

1991: Down to a non-viable four members, Graffham Badminton Club disbands in February, but is reformed on several occasions in the next 30 years.

1992: Downlands County First School is renamed Graffham County Primary.

1994: Malcolm and Mavis King become the first tenants of the village shop, now re-sited to its current location. In the two years since Roger Mozley had announced his impending retirement, the former garage site was purchased for £120,000 by today's Graffham Village Shop Association. Roger delayed his departure until the shop and post office were safe. Lloyd Pocock purchases the Foresters Inn and runs it until 2005, after which it is tenanted until he sells up in 2014.

1995: The tennis courts are re-opened after a professional resurfacing. Crosdil Motor Services opens for business in Norwood Lane, before proprietor Bob moves operations to Hoyle Garage in 2003.

1997: Graffham Recreation Ground wins a National Playing Fields Association award, with Dick Challen, Den Petter and Graham Kingsmill invited to Buckingham

▶ *Continued on next page*

▶ *Continued from previous page*

ham Palace to receive the silver salver from the Duke of Edinburgh, President of the NPFA, the following year. Toby Mullins succeeds Charles Hannaford as Headmaster of Seaford College.

2000: Bishop of Horsham the Rt Rev Lindsay Urwin blesses the new Millennium Lychgate at St Giles. Lavington Plantation is gifted to the National Trust.

2001: Rev Mark Gilbert becomes Rector of Graffham with Woolavington. Long Bostle Downland Preservation Society formed.

2002: Bowls Club pavilion erected.

2004: Founded by Katherine Guillod more than 80 years previously, the cumbersome name of Graffham, Lavington, South Ambersham and Selham District Nursing Association is trimmed by dropping the latter three villages, then finally renamed the Graffham Health Support Association in 2011.

2005: Graffham and Duncton schools merge as the Lavington Park Federation.

2006: Graffham Empire Movies established.

2007: Helen Martin becomes Headteacher of the Lavington Park Federation. Centenary of the Empire Hall. The first Tennis Week is held. The Bowls Club green is re-laid in time for the start of the 2008 season.

2008: The old pipe organ at St Giles is replaced by an electronic version. Jeeva and Vasu take over the village shop as the Post Office closes its Graffham's branch. Death of Graffham Rustics' founder Eddy Loring, aged 101.

2009: First singing of a patronal hymn for St Giles' Day (1 September), *On This Our Festal Day*, composed by newly installed organist Richard Bailey, but for its debut performance recently retired organist Derek Williams is invited to play it. Graffham Stoolball Club disbands.

2010: Rev Stephen Gray becomes Rector of Graffham with Woolavington and introduces the "Men's Breakfast". A defibrillator is installed at the Empire Hall. The South Downs becomes a National Park.

2011: Further refurbishments to the tennis courts but, unlike previously, the financial stability of the Tennis Club means the work can be funded without recourse to grants, donations and loans. Having held its first exhibition in 1952, physical frailty finally prompts Barbara Mullins' to wind up Graffham Weavers.

2012: The Thursday Club launches the second Graffham Scrapbook project (the original having been created in 1947), which culminates in the publication in 2015

From John Green, Head of Seaford College: *Graffham*

Parish News contains such relevant information about our local area and highlights so many people who make such a positive difference to our stunning environment and caring community.

Importantly it also relates back to important people and events from the past – that have undoubtedly shaped all that Graffham is about as a village today. As proud contributors of Seaford's news, we know first-hand how it brings us all closer together. Each issue is eagerly anticipated. Here's to many more editions, sparking conversations and fostering community spirit. Well done to everyone involved! Ad Alta!

GPN
400

of the *Graffham: Memories, Articles, Photos* book, edited by Mary Butterworth and Diana White. Graffham and Heyshott Guides winds up. The Recreation Ground is awarded Queen Elizabeth II Field status, ensuring it will remain for the use of parishioners and schoolchildren of Graffham in perpetuity.

2013: Rev Michael Barter becomes Rector of Graffham with Woolavington. The first Graffham Easter Market is held. John Green succeeds Toby Mullins as Seaford College Headmaster. Graffham Football Club and Graffham Brownies wind up.

2014: Graffham Tennis Club holds a 50th anniversary dinner at Seaford College.

2015: After 120 performances since 1951, the final curtain falls on Graffham Rustics. Shanly Homes completes Wallace Square in Lavington Park.

2016: Graffham's Ian Thornley receives an OBE in the New Year Honours List for services to disabled people.

2018: Rev Vivien Turner becomes Priest in Charge of Graffham with Woolavington. Graffham Men's Cricket Club plays its last match (to date).

2020: The Covid pandemic brings everything to a halt.

2021: Jeeva is awarded a British Empire Medal in the Queen's Birthday Honours for services to the community during the pandemic, when his shop never closed.

2022: The village holds a weekend of celebrations to mark Queen Elizabeth II's platinum jubilee.

2023: The community regroups to mark the coronation of King Charles III. Pickleball arrives in Graffham.

2024: The installation of a new audio visual system at the Empire Hall enables Graffham Empire Movies to resume after a four-year hiatus.



We were spoiled for choice when it came to pictures for our front cover this month. This wonderful photo of the village, taken by © Richard Goodwin from Graffham Down on 29 March this year, was on the shortlist, along with several others in this edition of the magazine, but in the end we felt the compilation of covers from our back catalogue was appropriate for this, our 400th issue.

Movies make a welcome return to our hall

Graffham Empire Movies (GEM) is taking a summer break after its reincarnation following a four-year hiatus sparked by the pandemic lockdown. The installation of the new state-of-the-art audio visual equipment at the Empire Hall has made GEM financially viable again – and improved the quality of its screenings.



Around 50 villagers joined the audience for *Summerland* on 11 May, around twice the number that saw April's offering of *Wonka*. The company that installed the equipment has already returned to iron out the few teething issues identified.

The curtains will be raised on the silver screen again from the autumn for a monthly winter programme, with *One Life* and *Little Women* pencilled in for viewings.

GRAFFHAM FESTIVAL



...a summer arts celebration

BOOK YOUR TICKETS NOW TO AVOID MISSING OUT!

A Festival for all ages in the wonderful South Downs village of Graffham, between Midhurst and Petworth. Concerts, open studios and gardens, a floral celebration, talks, a special film, food, wine and much more.



14 - 23 JUNE 2024

Graffham Festival 2024 Programme

We are delighted to present our 2024 Festival Programme.
Come and join us - there is something for everyone!

FRIDAY 14



FESTIVAL OPENING & STRING QUARTET

A grand launch opening reception in a stunning garden next to St Giles Church for those attending the opening night concert. Includes an exclusive preview of the Glory of the Garden display created by Georgina Macqueen. We then move inside the Church for a recital by the acclaimed Benedetti Foundation Ambassador String Quartet.

Time Reception from 6pm.

Venue St Giles Church.
Drinks and theatre snacks served during the opening reception. Donations to St Giles Church.

Tickets £10

B buytickets.at/graffhamfestival2024

THROUGHOUT THE FESTIVAL



THE GLORY OF THE GARDEN

A stunning display created by St Giles flower arrangers, directed by floral designer Georgina Macqueen.

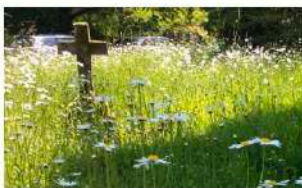
Not to be missed!

Time 8am-8pm throughout the Festival.

Closed during weddings each Saturday 1 – 3.30pm, and available only to ticket holders when concerts are taking place in the church.

Venue St Giles Church GU28 0NJ

Tickets Free to view. Donations to St Giles appreciated.



LOVE YOUR BURIAL GROUND AND BIODIVERSITY SURVEY

St Giles' churchyard is open year-round – and Graffham Festival coincides with the national Love your Burial Ground Week. Churches Count on Nature 2024 runs at the same time and focuses on the brilliant wildlife to be found in churchyards.

Time Open throughout the Festival.

Venue St Giles Churchyard GU28 0NJ

Tickets Free to view. Donations to St Giles appreciated.



BOX OFFICE for most festival events requiring tickets, go to buytickets.at/graffhamfestival2024 or use the QR code



SATURDAY 15



Be there or bee square!



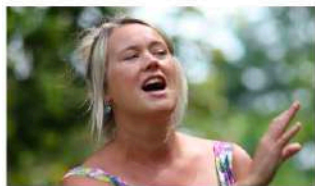
BUSY BEES

Find out all about bees, with a chance to paint or draw bees and the flowers they love - for display in the Glory of the Garden celebration at St Giles Church. Complimentary honey sandwiches at the end! Suitable for children between the ages of 3 and 10 (children under 5 years must be accompanied by an adult).

Time 10 – 11.30am

Venue Recreation Ground Pavilion GU28 0QA

Tickets Free from graffhamfestival@mail.com



CHORAL WORKSHOP WITH EMILY BARDEN

A fun, relaxed singing workshop with fantastic Emily Barden. Emily runs workshops and courses for singers/songwriters as well as training sessions for teachers, choral leaders and people working with young voices. Helping unlock the creativity of others and inspiring young people to find their own voice is one of Emily's greatest joys.

Time 3 – 4.30pm

Venue Empire Hall
GU28 0QB

Tickets £5 **B**



CONCERT BY FUTURE TALENT WITH EMILY BARDEN AND PETWORTH VOICES

Featuring gifted young musicians that the Future Talent charity is helping to flourish. Includes solo and ensemble classical performances. The second half will feature our local a cappella choral group Petworth Voices – plus Emily Barden who will have led the afternoon's choral workshop in the Empire Hall.

Time 6pm

Venue St Giles Church.

Refreshments available during the interval.

Donations to St Giles appreciated.

Tickets £10 **B**

SUNDAY 16

FESTIVAL SONGS OF PRAISE

A celebratory service with the chance to join in some of the nation's favourite hymns. An arts and garden theme will run through as a blessing for the week's events.

Time 10.30am

Venue St Giles Church.

Tickets Free. Donations to St Giles appreciated.



CABARET!

Cabaret by the Shane Hill and Jodie Elms Duo, with special guest performer Mike Hatchard. Expect toe tapping performances of the Great American Songbook as these accomplished and acclaimed musicians create a night to remember! Reigate based guitarist Shane Hill and Hampshire based vocalist Jodie Elms will be joined from East Sussex by vocalist, pianist and violinist Mike Hatchard for a wonderful evening of American Songbook and more. Your chance to Get That Swing on a Sunday night!

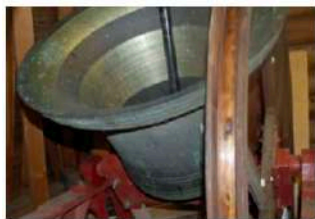
Time 7.30pm

Venue St Giles Church.

Refreshments from 6.45pm.

Tickets £10 **B**

MONDAY 17



THE ART OF BELLRINGING

St Giles' bellringers will be in action throughout the Festival. This is a chance to watch them ring, see an exhibition about the church's bells and find out what makes them ding dong!

Time 6 – 7pm

Venue St Giles Church.

Tickets Free.



ORGAN RECITAL BY MALCOLM BRINSON

An accomplished organist, Malcolm has had a long musical career, much of it in the local area. The programme for the concert includes music by Bach, Böellman, Dubois, Easthope Martin, Karg-Elert, Liszt, Michell and Whitlock. Experience a wonderful performance in the atmosphere of St Giles Church.

Time 7.30pm

Venue St Giles Church.

Refreshments from 6.45pm.

Tickets £10 **B**

TUESDAY 18



GLORY OF THE GARDEN

Glory of the Garden will be offering ploughman's lunches in exchange for a donation to the church. Between 12 noon and 2.30pm

Venue St Giles Church.



PAINTING DAY

Hosted by artist Richard Davidson. Open to all abilities and mediums, with a choice of subject matter and location. Please bring easel and stool if possible.

Time 10am – 5pm

You do not need to commit for the whole day.

Venue Brookdene Studio, Graffham GU28 0NL
Tea and coffee available.

Please bring your own lunch.

Tickets £5

Only in advance from richard.davidson@btinternet.com or 01798 867232



SHAKE IT UP SHAKESPEARE

Using the bard's language, audience suggestions and the imaginations of the troupe's professional actors, Shake It Up Shakespeare create a brand new Shakespeare play live on stage. With live music from the group's talented band, along with songs and laughs, they weave together the themes, characters and language of Shakespeare to create an unforgettable evening.

Time 7.30pm

Venue Graffham Empire Hall GU28 0QB

Bar offering a selection of beers, wines and soft drinks.

Tickets £12.50 **B**

WEDNESDAY 19



FIESTA AT THE FORESTERS!

This village pub has a reputation for delicious and authentic Spanish cuisine and will offer a selection of tapas and other dishes all day. With its regular flamenco guitarists providing live music interspersed through the day and in the evening.

Time From 12 noon.

Venue The Foresters Arms
GU28 0QA

Regular bar and food prices.



**FOLLOW US ON
FACEBOOK**

Full details on all
Graffham festival 2024
events and latest news go
to Facebook bit.ly/graffhamfestival2024 or use
the QR code



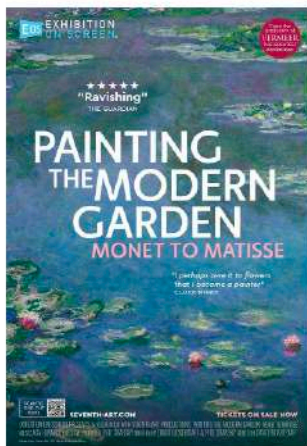
THURSDAY 20

GLORY OF THE GARDEN

Glory of the Garden will be offering Ploughman's lunches in exchange for a donation to the church.

Between 12 and 2.30pm

Venue St Giles Church.



FILM - PAINTING THE MODERN GARDEN FROM MONET TO MATISSE

A film for lovers of art and lovers of gardens – a magical, immersive journey from the gallery to the gardens that inspired some of the best loved paintings of all time by some of the most celebrated artists of all time. Enjoy Graffham Empire Hall's new state-of-the-art audio visual system. 93 minutes. Certificate U.

"A ravishing joy from start to finish." – The Guardian

Time 7pm

Venue Empire Hall.

Bar offering a selection of beers, wines and soft drinks.

Tickets £10 **B**



FOLK: NOBLE JACKS DUO + GUESTS

A midsummer evening with one of the best folk duos on the circuit, plus guests. Noble Jacks take no prisoners with their high-energy foot stompin' rhythms, with a huge following across the UK and beyond.

Local groups will be performing from 5pm.

Tickets will be required from 7.30pm.

Time 5pm

Venue The Three Moles,
Selham GU28 0PN

Food and drink at regular prices.

Tickets £10 **B**



FRIDAY 21 TO SUNDAY 23



OPEN STUDIOS

There will be more than 15 artists and crafts people showing their work at 9 venues in and around Graffham. A separate guide will show the studio sites as well as introducing the participants and their work.

Time 11am – 5pm

Venue Guide available at Graffham Village Shop from June the 1st. Also available from the Pavilion Saturday 22 and Sunday 23.

Tickets Free

FRIDAY 21

OPEN STUDIOS

Time 11am – 5pm

See box left, for details.



NOTES FROM A SCULPTOR'S STUDIO

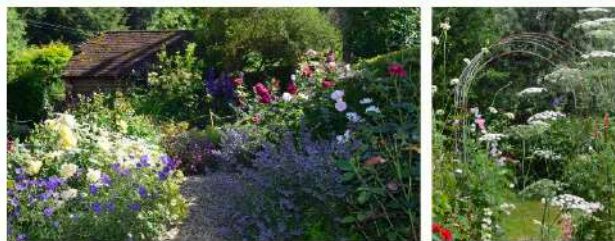
A talk by one of Britain's foremost sculptors, local resident Philip Jackson CVO, who will share insights into how he has established a worldwide reputation for public and private commissions. He will look back at his 60 plus years of sculpting and how he has captured the essence of the icons who have been his subjects. These including Queen Elizabeth II, The Queen Mother, Mahatma Gandhi, Bobby Moore and the Bomber Command Memorial.

Time 7pm

Venue Graffham Empire Hall. Bar offering a selection of beers, wines and soft drinks.

Tickets £10 **B**

SATURDAY 22 TO SUNDAY 23



OPEN GARDENS

An opportunity to visit some of the many beautiful gardens in Graffham. From the meticulously well tended and weeded with perfectly striped lawns to the more rambling and wild. All are peaceful, full of birdsong and you may hear live music too!

Time 1 – 5pm

Venue Over 15 gardens in and around Graffham.

Tickets £5 a person, £10 a family. Available from the Recreation Ground Pavilion, adjacent to car park.

CAR PARKING A free festival car park will be available Friday, Saturday and Sunday (21 – 23rd) adjacent to the Recreation Ground. **Please do not park at the Village Shop whilst attending the Festival.**

SATURDAY 22

OPEN STUDIOS

Continues 11am – 5pm
See box left, for details.

OPEN GARDENS

Time 1pm – 5pm
See box left, for details.



TALK: GARDENS FOR WILDLIFE

Matthew Sennitt, a local conservationist, will describe the basics of developing a wildflower meadow area. He will demonstrate other ways to enhance biodiversity and wildlife habitats in your garden, such as creating a hibernaculum.

Time 2pm on Saturday 22, Sunday 23

Venue High View (Open Gardens **N**)

Tickets Included in Open Gardens.

TEAS AND SNACKS

Available at the the Recreation Ground Pavilion from 12 noon.

GRAFFHAM'S ~~BRITAIN'S GOT~~ TALENT

Local impresario Brian Lanaghan is proud to present living proof that Graffham's got talent. An evening revue featuring song, dance and comedy sketches, compered by Brian himself. Piano accompaniment for song and dance by Richard Bailey, former organist at St Giles Church and propper-upper of the Foresters Arms and White Horse bars.

With many prominent locals treading the boards, surely a great night of entertainment awaits! An eyeful and earful, guaranteed to make you cheerful.

Time 8pm

Venue Empire Hall. Refreshments available from 7.30pm.

Tickets £10 **B**

SUNDAY 23

FESTIVAL THANKSGIVING SERVICE

A special Service of Thanksgiving and Holy Communion to mark the final day of the festival.

Time 10.30am

Venue St Giles Church.

Tickets Free. Donations to St Giles Church appreciated.

OPEN STUDIOS

Continues 11am – 5pm
See box left, for details.

OPEN GARDENS

Continues 1pm – 5pm
See box left, for details.

TALK: GARDENS FOR WILDLIFE

See Saturday

Time 2pm

TEAS AND SNACKS

Available at the Recreation Ground Pavilion from 12 noon.



END OF FESTIVAL PARTY!

A chance for Graffham to celebrate the end of another Festival. Join us at the village recreation ground, enjoy a tasty BBQ, a bar serving local ales, Pimms, wine, soft drinks and more, to the tropical sounds of the Worthing Steel Band. All welcome. From 5pm at the Pavilion.

PICK UP YOUR FULL ART TRAIL GUIDE
from locations around the village now or
from Graffham Village Shop on Friday 21
June or the Recreation Ground Pavilion on
Saturday or Sunday 22 or 23 June, when
and where the Open Gardens guide and
tickets can also be obtained.

GRAFFHAM FESTIVAL



...a summer arts celebration

EXHIBITING THE WORKS OF THE FOLLOWING ARTISTS



COLIN
BARKER



IZZY
BARRETT



DOMINIQUE
KENWAY



RICHARD
DAVIDSON



SUSAN
HILL



JULIA
FORREST



JOANNA
MORRIS



PHILIP
JONES



MARY
TAYLOR



PRIM
HOULT



CLIVE
MCBAIN



TABITHA
MCBAIN



JANE
STICKLEY



ROSEMARY
ROBERTS



JACKY
GREGORY



PAMELA
JAMISON



SYA
GORING

GRAFFHAM OPEN STUDIOS ART TRAIL

A CREATIVE JOURNEY 21 - 23 JUNE 2024

ALL STUDIOS OPEN DAILY FROM 11AM TO 5PM. ADMISSION TO ALL STUDIOS IS FREE

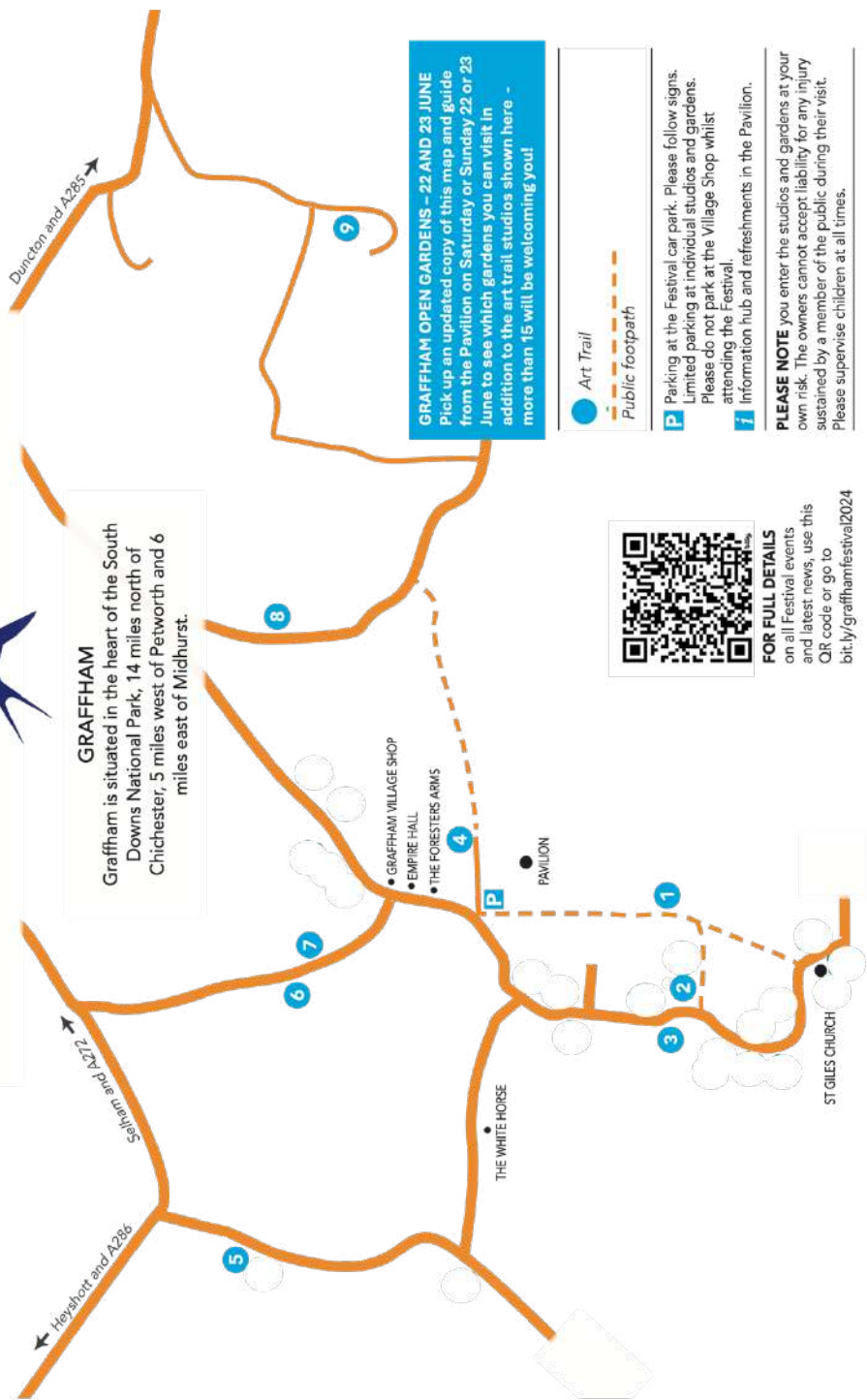
A CREATIVE



JOURNEY

GRAFFHAM

Graffham is situated in the heart of the South Downs National Park, 14 miles north of Chichester, 5 miles west of Petworth and 6 miles east of Midhurst.



GRAFFHAM OPEN GARDENS – 22 AND 23 JUNE
Pick up an updated copy of this map and guide from the Pavilion on Saturday or Sunday 22 or 23 June to see which gardens you can visit in addition to the art trail studios shown here – more than 15 will be welcoming you!

- Art Trail
- - - Public footpath

P Parking at the Festival car park. Please follow signs. Limited parking at individual studios and gardens. Please do not park at the Village Shop whilst attending the Festival.

i Information hub and refreshments in the Pavilion.

PLEASE NOTE you enter the studios and gardens at your own risk. The owners cannot accept liability for any injury sustained by a member of the public during their visit. Please supervise children at all times.



FOR FULL DETAILS
on all Festival events and latest news, use this QR code or go to bit.ly/graffhamfestival2024

**New or upgraded
system? Call us
today to arrange
a FREE survey**



- ★ Intruder Alarms
- ★ CCTV
- ★ Entry Phone Systems
- ★ Fire Alarms

t. 03300 945596
w. www.scorpio-alarms.co.uk
a. Pippin Farm, Toat Lane, Pulborough RH20 1BZ

**THE
FLOORING
BROTHERS**

theflooringbrothers.co.uk

**LET US PUT THE COMFORT
BACK UNDER YOUR FEET!**

Locally based carpet and vinyl
fitters and suppliers

Small family business with no
large overheads so we offer
sensible prices, combined with
a friendly personal service
from start to finish

Jon: 07595 873598
Lucas: 07532 453873

info@theflooringbrothers.co.uk



W. Bryder & Sons

est. 1863

The Gables
Tillington
GU28 9AB
Tel: 01798 342174

95 Lower Street
Pulborough
RH20 2BP
Tel: 01798 872000

Email: wbryderandsons@hotmail.co.uk

**5TH GENERATION LOCAL FAMILY RUN
INDEPENDENT FUNERAL DIRECTORS**

24 Hours Service
Private Chapel of Rest
Monumental Stones supplied
Pre-Paid Funeral Plans available
Grave Maintenance service

Thursday 20th June - 8pm

Part of the Graffham Festival, The Three Moles is proud to present

Noble Jacks Duo

Nominated live act of the year in the 2023 UK Americana Awards and hailed as the finest purveyors of the folk-influenced Americana.



Tickets via Graffham Festival website



KLE Decorators Ltd
Unit C12
New Barn Farm
Funtington
Chichester
West Sussex
PO18 9DA



07880 317071



hello@kledecorators.co.uk



kledecorators.co.uk

We are totally committed to the finest quality of painting and decorating that there is.

Be it the high-end painting & decorating of apartments and offices, refurbishment of kitchens & bathrooms, full interior refurbishments, or renovation works on a listed building, we ensure that all of our work is carried out thoroughly, with due diligence by all our painters & decorators.

Our decorating services include:

- Painting
- Spraying
- Wallpapering
- Specialist coatings
- Traditional paintwork
- Feature walls
- Coving
- Plaster and render repairs
- Woodwork repairs
- Special effects such as graining, marbling, murals



Day · Flexi · Weekly · Full Boarding



Seaford College

Prep · Senior · Sixth Form



Everyone at Seaford College wishes all the very best for this year's Graffham Festival with the fantastic and varied week long events taking place throughout the village.

It's so lovely to see the community come together.



Love to learn



SCAN ME

Petworth Festival brings brass trio to St Giles

Petworth Festival is now selling tickets for its concert at St Giles on Friday 12 July at 5pm, featuring the Solis Brass Trio, winners of the prestigious Brass Ensemble Musicians Company prize at London's Royal Academy of Music in 2021. The hour-long programme will include works by Rimsky-Korsakov, Beethoven and Brahms. Tickets – at £13 for adults and £5 for under 18s – from petworthfestival.org.uk. The trio will be performing at Tillington earlier the same day, so make sure you book for the right session. Petworth Festival runs from 10 to 27 July with more than 40 events, covering classical, jazz and rock music, comedy, talks and more.



FITTLEWORTH GARDEN TRAIL

**NEW for 2024 our Annual Garden Trail is moving to June.
All in aid of St. Mary's Church, Fittleworth**

Gardens throughout Fittleworth will open their gates, this year a large percentage will be new gardens on an extended trail including Tripp Hill. This later date allows us to view the gardens as they move into Summer with all that offers and of course there will be Teas and Cake along with a Plant Stall and other attractions in The Fittleworth Village Hall

**2 - 6pm
SATURDAY 1ST
&
SUNDAY 2ND
JUNE
2024**

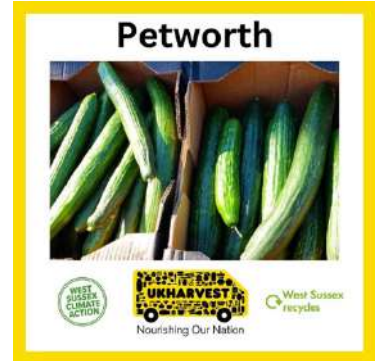
So be sure to note these special days in your diary

More than a dozen gardens – £7.50 a person (under 16s free)

Helping to trim food waste mountain locally

Petworth is just one of seven locations across West Sussex where the county council is working with UKHarvest to offer the public the chance to collect surplus food which would otherwise end up as waste from suppliers. It launched the scheme on a trial basis in October 2022 and has now extended it twice, in response to demand, with more than 11,000 people taking advantage of it and saving 37 tonnes of edible food going to waste.

The scheme will be offered at Petworth's Sylvia Beaufoy Centre GU28 0ET on the first Thursday of the month until April next year, between 10 and 11am – so the next one is on 6 June. Pop along with your shopping bag and help yourself to whatever is on offer, all for a suggested donation of £3.50.



Saturday 8th June - 8pm

The Three Moles brings you the
international Drag Queen,

Felicity Suxwell

Be prepared for an evening of
outrageous entertainment!



No tickets or bookings
required. 18+ only
www.threemoles.co.uk

Graffham Garden Group's summer diary

Graffham Garden Group has a busy programme of visits and other events this summer. To book your place on any of the outings – which are open to everyone, not just members – contact Nicky West at nicolamwest@btinternet.com or on 07796 144647. Car sharing is encouraged so please always ask if you would like a lift!

Monday 10 June 1pm

Visit to High Beeches

High Beeches Lane, Handcross RH17 6HQ

27 acres of woodland and water gardens with the wildflower meadow its main feature in June.

£10 pay on arrival (free for Historic Houses members).



Saturday 13 July 2.30pm

Flower and produce show

Empire Hall, Graffham



Classes for flowers, vegetables, fruit, baking and preserving, along with five photography classes – Graffham village life, a splash of colour, animal, reflections, and, for under 16s, any photograph. New classes for heaviest onion and potato. Home produce includes herb loaf, vegetable cake, flapjacks, savoury quiche, cheese scones and pot of jam. Full schedule will be distributed in late June. Early copies available from Marie Bracey, on 01798 867760.

Wednesday 7 August 2pm

Visit to Fittleworth House

Bedham Lane, Fittleworth RH20 1JH

Three acres of country garden. Walled kitchen garden growing wide range of fruit, vegetables and dahlias. Mixed flower borders, roses and lawns. Glasshouse and potting shed. Teas available.

£7. Pay on arrival. Our visit is on an NGS day.



Friday 13 September 12 noon

Visit to Parham House

Parham Park, Pulborough RH20 4HS



A four-acre walled garden with wide herbaceous borders, rose garden, vegetable garden and orchard.

£11.50 to visit the gardens only (RHS and Historic Houses members free). Pay on arrival.

Nature Notes: A poison bouquet to strike him down

A regular column by Sussex naturalist and wildlife guide Michael Blencowe, who can regularly be spotted in and around Graffham.

16 June. Bloomsday. A celebration of the life of James Joyce whose novel *Ulysses* follows Leopold Bloom's escapades on that mid-summer date 120 years ago. Throughout *Ulysses*, Joyce uses flowers to symbolise sexuality and the lure of the exotic. Aside from fornication, Joyce also tackles expiration, hallucination and urination. All of which (apart from the urination) remind me of another bloom that will be raising hell around Sussex in June.

Deadly nightshade looks innocent enough. A tall plant with lush leaves and purple, bell-shaped flowers. Later in the year the glossy berries will catch your eye – dangling temptingly like black pearls. It's in the plant family *Solanaceae* – related to potatoes and tomatoes. But deadly nightshade isn't the sort of relative you'd invite round for dinner. And you certainly wouldn't want it anywhere near the food. It is lethally poisonous.

Its name should be warning enough – and if not, colloquial nicknames such as 'Satan's Rhubarb' and 'Death Cherries' underline the message. In 1597 Elizabethan physician John Gerard warned us 'banish it from your gardens' and

Graffham Down Trust Annual Picnic

Sunday July 21 2024 from 10am to 1 pm/

*****Meet outside St Giles Church at 9.45am

*****Picnic on the Downs for all ages at 12.30pm

*****Bring a picnic and join us in Bowley's Reserve at midday.



Featuring a butterfly walk led by the one and only Michael [Blencowe](#).

Will he spot the Purple Emperor butterfly this year?

To reserve a ride to the top contact: JimKirke@hotmail.com

For more information e-mail: sennitt2@gmail.com

steer well clear but we obviously weren't paying attention. An internet search 427 years later reveals recent stories of accidental deaths, comatose children and a naked, hallucinating German monk.

It is reported – but possibly exaggerated – that just three berries will kill you. Symptoms start with a dry mouth, dizziness and urinary retention (ha – so there was a link to urination after all!) and lead to delirium, convulsions and a heartbeat allegedly so furious that it can be heard from several feet away. It's all downhill from there. Incredibly the berries are the safest part of the plant – you wouldn't want to go anywhere near the roots.

Wicked witches would use the berries in a potion to make their broomsticks rise. Wicked women in Venice, looking for a similar reaction in their men, used deadly nightshade eye drops to dilate their pupils. The plant's scientific name *belladonna* means 'beautiful woman'. This beautification's potential side effects would later answer the question 'how do you make a Venetian blind?'

Sussex botanist David Lang once told me a tale of a student found staggering the streets drunk and disorderly. Nothing new there – until a police doctor saw his wide eyes and realised he had been poisoned by belladonna. He was rushed to hospital where it transpired that his landlady was trying to extract medicine from the berries and was straining them through the same strainer she was using to make his coffee each morning. You certainly won't get a kick like that from Costa.

So, be cautious of this killer as you walk the South Downs in June to ensure that your life, which to paraphrase Mr Joyce, is already a 'parenthesis of infinitesimal brevity' does not end up any briefer.

- You can find details of Michael's upcoming events, wildlife sightings and adventures or book him for a wildlife survey of your garden or land at:



Deadly nightshade flowers (above) and the berries that follow (below).



michaelblencowe.com

Jonathan's jottings: Our rare Lords and Ladies

A new occasional column by Jonathan Simons, village botanist and fount of knowledge on so many things astonishing and bizarre.

All credit to Michael Blencowe who, in April's *Graffham Parish News*, gave us an in depth look at *Arum maculatum*, the Wild Arum. Gallantly and without a blush, he catalogued all the common names that its exotic form has spawned. What he omitted to mention, however, was that there is a related but much rarer native species that is quite special to us here in Graffham. At the foot of the Downs you can find *Arum italicum*, the 'Italian' or 'Rare' Lords and Ladies.

It also flourishes on the South Coast of the Isle of Wight, where I was born and brought up. When we moved to Graffham, I was so pleased to discover this link between the bookends of my life.

Superficially the two plants are the same. The main distinguishing feature is that the leaves of our rare species start to appear in the winter and by December they are fully-grown. The common species does not appear until the new year.

Arum italicum is found all along the foot of the Downs from Harting to Bury. The easiest place for us to spot them is in the woods between the Lavington Estate buildings and Seaford College, quite accessible on public paths. One has been spotted, though, as far north as Millburgh Hall, where I live!

The leaves of the common arum are often spotted but those of rare ones are always 'immaculate'. When the flowers appear in early summer the central spadix of the rare species can be seen to be stockier and more uniformly yellow than the other, which is often flushed with purple. The juicy green berries going to red are produced by both species. They are attractive to creatures but poisonous to humans.



While the leaves of the common arum are often spotted, our rare italicum variety is 'immaculate' (left), although its flower (centre) and berries (right) are similar.

Property watch

Homes for sale or rent locally, posted at [rightmove.com](https://www.rightmove.com) since our previous edition:

Church Farm, The Street, Graffham GU28 0NJ:

Grade II listed hall house, four bedrooms, four bath/shower rooms, reception hall, detached guest cottage, outbuildings including stable block. Almost 15 acres. Internal floor area of 351 sq m (3,778 sq ft). Guide price £3.25 million. *Barrington & Co, Petworth 01798 309657. Listed 16 May.*



Brook Orchard, Selham Road, Graffham GU28 0PY:

Detached house, four bedrooms, three bath/shower rooms plus cloakroom, entrance and dining halls, drawing room, study, kitchen, utility. Double garage, summer house, 0.87 acres of gardens. Internal floor area of 278 sq m (2,988 sq ft). Guide price £1.85 million. *Jackson-Stops, Midhurst 01730 774837. Listed 2 May.*

Ivy Cottage, Church Road, Duncton GU28 0JZ:

Detached period house, four bedrooms, two bath/shower rooms, entrance hall, sitting, family and dining rooms, kitchen, utility. Tool shed, store, 0.35 acres of gardens. Internal floor area of 149 sq m (1,603 sq ft). £795,000. *RH & RW Clutton, Petworth 01798 303593. Listed 29 Apr.*



Cherry Tree Cottage, Station Road, Coultershaw GU28 0JF:

Semi-detached character cottage, two bedrooms, one bathroom, sitting room, conservatory/dining room, kitchen/breakfast room. Outbuilding and enclosed garden. 89 sq m (956 sq ft). Guide price £495,000. *Savills, Petworth 01798 303558. Listed 25 Apr.*

14 Willett Close, Duncton GU28 0LA: Semi-detached house in need of updating, three bedrooms, bathroom, sitting and dining rooms, kitchen. Outside store and loo. Garden, sheds, greenhouse. 81 sq m (870 sq ft). £365,000. *RH & RW Clutton, Petworth 01798 303593. Listed 29 Apr.*



Hurst Cottage, Sutton RH20 1PL: Detached cottage, Grade II listed, two bedrooms, two bathrooms, sitting room, office, kitchen/diner, utility. Barn-style double garage and enclosed garden. 110 sq m (1,182 sq ft). Guide price £895,000. *Barrington & Co, Petworth 01798 309657. Listed 30 Apr.*

Planning matters

New barn at Meadowbrook given green light Plans to build a new agricultural barn – 12 metres long, 8 metres wide and with a ridge height of 4.7 metres, all clad in green – at Meadowbrook Farm, Woodcote Lane, Graffham, have been approved by Chichester District and South Downs National Park planners.

Planning applications for Graffham and East Lavington filed with the South Downs National Park as we went to press (for details, see bit.ly/sdnp-planning):

Beck House, Selham Road, South Ambersham GU29 0BX: Demolition and replacement of existing timber outbuilding to rear of dwelling and extension to garage at front. SDNP/24/01283/CND. Received 27 Mar.

Crimestoppers

Sussex Police's log of incidents locally in recent weeks. If you have any information which might help, please report it.

Easebourne, Dodsley Grove: A keyless car was stolen from outside the owner's home.

Saturday 15th June - 7pm

Dr Busker

& the Dorset RATS

Dr Busker brings a bit of hilarious
Ye Olde England entertainment,
with a twist!



No tickets or
bookings required
www.thethreemoles.co.uk



From Town Hall: Perplexing process of planning

Our representative on Chichester District Council, John Cross, provides his regular update on his key issues of focus right now.



Chichester District Council (CDC) submitted its Local Plan to the central government inspectorate in May – a major achievement. The current Local Plan is out of date which means the council is likely to lose planning applications at appeal. Hopefully, this new document will be adopted soon.

While the South Downs National Park's Local Plan is not out of date, it is getting close. A new one is being drafted, with input from parish councils, some of which already have neighbourhood plans and village design statements in place.

Planning is a strange and complicated process. The powers of both the Chichester District and South Downs planning committees – on both of which I serve – are limited. For example, if the many statutory consultees, such as Highways and Southern Water, have no objection to a planning application, then we cannot refuse it, even if the parish council objects and locals protest – or even if sewage flows by the site or the roads nearby already have massive queues. If Chichester or South Downs did refuse the application, the applicant would most likely appeal and win, so we would just be wasting public funds. That is also why the planning committee must follow the advice of its planning officers, though we can and do often challenge their views.

We also have to be mindful that if we lose too many appeals then the Secretary of State can appoint someone else to take over the planning committee. This is close to happening at Chichester District.

In short, local government planning committees are heavily constrained by government policy, with very limited powers.

From John Cross, our Chichester District Councillor, for

Fittleworth ward: *Graffham Parish News*, even in this digital age, is one of the most effective and democratic methods of disseminating news, events and information to residents. It is a powerful voice that reaches into every home and ensures that those who wish to be engaged in their community can participate. I am personally so grateful to those that edit, contribute and distribute the magazine as they are the lifeblood of their community.

**GPN
400**

Graffham Parish News' jamboree June quiz

Ten quick fire questions from Bill Barrett to test your local, topical and wider general knowledge. Answers at the bottom of page 58 (no cheating!)

- 1 Which Graffham resident had a memorial service at the Freemasons Hall, London, on 6 June last year?
- 2 To which saint is Lurghashall's church (below right) dedicated?
- 3 What is Cittaviveka, located at Chithurst?
- 4 Where in the UK will you find the Heel Stone, behind which the sun rises during the summer solstice?
- 5 Greenway was which whodunnit author's Devon holiday home?
- 6 Barron (aged 18), Tiffany (30), Eric (40) and Donald (46) are which billionaire politician's children, and which one is missing?
- 7 David Vine, Henry Cooper and Cliff Morgan were the presenter and team captains for the first series of which BBC television quiz show?
- 8 Which British player won the Women's Singles at the French Open tennis championship in June 1976?
- 9 Which recently deceased orthopaedic surgeon, and Welsh 1970s rugby union icon, won the British junior tennis championship in 1966?
- 10 Ruth Jones and James Corden (left) write which enduring sitcom set in Barry Island and Billericay?





- Puppy Training
- Dog Agility
- Pet Gun Dog Classes
- 1-2-1 Sessions

Dogs Doing Better
Kilsham Farm, Petworth GU28 0LJ
www.dogsdoingbetter.com
Call Liz 07702 009272
Or email:
dogsdoingbetter@gmail.com



Hunter's Hounds
Dog grooming
07716 136437
huntershounds7@gmail.com
Graffham, Petworth, Midhurst
and surrounding areas.

Letters to the editor – the column YOU write

Thanks for putting out the fire...: The article on the fire at Chapel View in your May edition mentioned that a passer-by was tackling the blaze by the time that West Sussex Fire and Rescue arrived at the scene. In fact, there were two passers-by there, both locals who deserve huge thanks – Chris Major and Amanda Godman-Dorington. They spotted the smoke and found a hose, connected it to the water mains and doused the flames. Without their heroic action, the damage to the Picture Framer’s Workshop would have been much more severe, and would potentially have endangered Chapel View, the village shop and other properties too. We all owe them both a very big debt of gratitude. – **Jeeva, Graffham Village Shop.**

... and for tending the war memorial garden: We all need to thank Carole Kirke, Tricia Wilson and all the Graffham Garden Group volunteers for their hard work and the joyous spring display of daffodils in the garden around the war memorial. It is much appreciated and good to see what care and attention is spent on this special place in our village. – **Sue Hill, Graffham House.**



Saturday 29th June

Armed Forces Day

12-2pm UK Forces Veterans Show Band
5-7pm Lancashire Belle

Plus displays throughout the day from the British Army, the Royal Army Medical Corps, a Women’s Land Army reenactment group and more.

Collections on behalf of military charities



No tickets or bookings required
www.thethreemoles.co.uk







GRAFFHAM TENNIS CLUB

Tennis Week 2024

Friday 19 July – Friday 26 July

Fri 19 July	● 4pm	● Pickleball
	● 5.30pm	● Parent and child tennis / ball machine  Bring and share barbeque/picnic - Pavilion bar open
Sat 20 July	● 9.30am	 Coffee and bacon butties
	● 10am – 12.30pm	● Mixed Doubles
	● 1pm	● Mixed Doubles final
	● 2pm	● Parent and kids two wicket cricket match ● Pavilion bar open / Bring Picnics
Sun 21 July	● 10am	● Men's Doubles tournament
	● 1.30pm	● Men's Doubles final
Mon 22 July	● 10am -12noon	● Seniors tennis
	● 4.30pm – 6pm	● Adult coaching
Tue 23 July	● 1pm – 2.30pm	● Adult coaching
	● 4pm – 6pm	● Graffham versus Rogate Juniors match
Wed 24 July	● 9.30am – 1pm	● Junior/Academy coaching
	● 6pm	● Hampshire League match
Thurs 25 July	● 9.30am – 1pm	● Junior/Academy coaching
	● 6pm	● Friendly match versus Petworth
	● 7.45pm	● Club curry at the Pavilion
Friday 26 July	● 9.30am – 1pm	● Junior/Academy coaching
	● 6pm – 8pm	● Club night / Olympic opening ceremony
	● 6.30pm	● Graffham tennis alumni tournament

ENTRIES for ANY events PLEASE use our
admin@graффhamtennis.co.uk email or SEE BELOW and CALL or email **NOW!**

Richard Hopp	richard@hoppcoaching.co.uk	Junior coaching
Simon Longman	☎ 07979 590891	Men's Doubles
Richard Gyles	☎ 07976243297	Mixed Doubles
Denise Clay	☎ 07771948343	Curry night tickets

The long, wet winter should be a distant memory, although it does linger on in some of the 'squishier' corners of the Rec. Hopes are high that softball cricket can begin this month – watch out for some impromptu mixed evenings advertised on Facebook's Graffham Noticeboard. Meanwhile, plans are afoot for Graffham's annual tennis week – see the poster opposite for details.



Graffham Tennis Club



Club nights on Fridays at 6pm have been well attended and have so far avoided any rain cancellations. The only disruption has been a drone flying overhead – capturing the picture above!

Summer leagues are well under way for Graffham's four teams with the toughest tasks being faced by the Ladies' A, who play in the top division. The men have a diverse team in terms of age and there are some future stars to watch out for.

Graffham Tennis Club East Hants results

29 Apr	Lost 5-3	Mixed Doubles	Div 2	v Headley B
1 May	Lost 6-2	Ladies' Doubles	Div 1	v Headley
13 May	Drew 4-4	Mixed Doubles	Div 2	v Fernhurst
14 May	Lost 3-5	Men's Doubles	Div 4	v Denmead
15 May	Lost 1-7	Ladies Doubles	Div 1	v Swanmore

Graffham Tennis Club East Hants League home fixtures: June

Do come and spend an early summer's evening supporting your teams!

3	Mon	6.30pm	Mixed Doubles	Div 2	v Midhurst
5	Wed	6.30pm	Ladies' Doubles	Div 1	v Medstead A
11	Tue	6.30pm	Men's Doubles	Div 4	v Fernhurst B
12	Wed	6.30pm	Ladies' Doubles	Div 1	v Haslemere A
17	Mon	6.30pm	Mixed Doubles	Div 2	v Alton
24	Mon	6.30pm	Mixed Doubles	Div 2	v Swanmore B

Club tournaments are coming up and we welcome all entries:

- Mixed Doubles preliminary rounds – Monday 27 May.
- Ladies Doubles preliminary rounds – Monday 10 June.
- Men's A Doubles – Saturday 15 June.
- Men's Singles – Sunday 30 June.
- Men's B Doubles – Sunday 21 July.
- Seniors' Mixed Doubles – Monday 22 July.
- Ladies' Singles – TBA.

Members should look out, too, for the invitation to the ever-popular fun Mixed Doubles happening in Tennis Week Saturday, 20 July.

Graffham Bowls Club *by Secretary Liz Pegram*

The Bowls Club opened for the 2024 season at the end of April. Sadly, our first game, away to Petersfield was cancelled due to bad weather.

Our first home game was played on a beautiful sunny evening against our friends from Arundel. Graffham were overall winners having wins on two rinks and a loss on one.

Roll ups are on a Monday evening at 6pm, weather permitting. If you would like to have a try, come along with some flat shoes. Bowls will be provided. You'll be made very welcome. The club is always looking for new members, novices and experienced. All our games are friendlies.

Graffham Bowls Club Home fixtures: June

Spectators welcome

18	Tues	6.30pm	v Pulborough
5	Wed	6.30pm	v Petworth



TEDDY TIME IN THE PAVILION TODDLER GROUP

Wednesdays 10.15-11.30am
Pavilion, Graffham Rec

No charge. All welcome. Just come along!

Graffham Ladies Cricket

The away fixture against West Wittering fell victim to the spring rain and Brett's Ladies will have to wait for the home fixture on 15 September for their attempt at a first victory against these resilient opponents.

Meanwhile, there are possible friendlies against Petworth on a couple of Thursday evenings in June. Training ahead of these will be on a sporadic basis. Anyone who would like to improve (or begin) their cricket over and above this is invited to join Petworth's Wednesday evening 6.30pm training sessions. Contact Kirah Ambroziak on 07873 120717. You could still play for Graffham in the local derby!

Polo

With the polo season in full swing at Cowdray Park, Graffham has benefited from the arrival of some of the sport's top players who have been seen round and about.

Our very own top player, Beanie Bradley, has been hoping for selection for the national team in an international fixture against New Zealand which will take place in Cirencester on 8 June. In the meantime, she has been playing in eight-goal competitions locally, for the Bamboleo team. Fixtures can be found at cowdraypolo.co.uk

THURSDAY CLUB



Strawberry Tea
at the Bowls Club

Thursday 13 June 2.30pm

All welcome

**ROGER GUNN
GARDEN MACHINERY
SHOWROOM AND WORKSHOP**



Fast Friendly Service
Competitive Prices
Collection & Delivery
Available



www.rogergunn.co.uk

Telephone 01243 786003
or 07979 752242

located between Lavant and West Dean

**Southern Counties
Tree Services**

Skilled Surgery in all aspects of Tree Care

- *Hedge trimming
- *Landscaping
- *Tree reduction
- *Logs supplied

Tel: 01243 814854
Mob: 07774 012961

barneslogs@gmail.com

**CLEAR ALL
PEST CONTROL**

**Fully qualified professional country
services**

**Specializing in Hornets, Wasps, Moles,
Rats, Mice & Flies/Cluster Flies**
www.clearallpestcontrol.com

Phone Dean on:

07768 986 338



Southdowns Chiropractic

Jemma Langford DC Patrick Thomas DC

Treating all musculoskeletal conditions related to the spine, along
with hips, knees, shoulders and many soft tissue injuries.

We also offer a range of other treatments with our team of
complementary therapists

Foot Health Acupuncture Physiotherapy
 Massage
Ear Wax Removal Hearing Test Reflexology
 Botox and Fillers

Tel 01798 345145

The Old Bakery Golden Square Petworth West Sussex
GU28 0AP www.southdownschiropractic.co.uk



**Dismantling and felling
Crown thinning and reducing
Removal of deadwood Pruning
Hedge cutting Stump grinding**

Full public liability

Certified arborist

Free estimates and advice



brushwoodtreeservices@gmail.com

07763 844422

Bill's bygones: *il brutto*, bronze medal, Laura Jo

A regular feature in which joint editor Bill Barrett looks back at what was happening in the village and the wider world this month in the past.

10 years ago – June 2014: The speaker at the Village Breakfast at the Foresters is Pete Clarke, “Plastic Packaging Guru”. Graffham Cricket Club’s season lurches from a sublime win away to Kirdford to drubbings (48 all out) at home to Goodwood and away to Lodsworth (albeit on a hissing pitch). Stoolball fun sessions are held at the Rec. Felipe VI becomes King of Spain after the abdication of his father Juan Carlos I. The Islamic State of Iraq and the Levant (aka ISIL, ISIS and Daesh) declares itself a caliphate. England’s footballers go out at the group stage of the (men’s) World Cup. Deaths of Eli Wallach (*The Good, the Bad and the Ugly*, aged 98) and comic actor Rik Mayall (56).

25 years ago – June 1999: Alan Sargent wins a bronze medal at the Gardeners’ World Live Show at the NEC. Burglars at the Foresters Arms make off with a safe but quickly ditch it when they find it is empty. However, an £80 camera and a purse are stolen from parked cars. Seventy tyres are dumped from the viewpoint on Duncton Hill and found hanging from trees. Prince Edward marries Sophie Rhys-Jones. Manchester United manager Alex Ferguson and newsreader Trevor McDonald are knighted in the Queen’s Birthday Honours. End of the Kosovo War. Former cabinet minister Jonathan Aitken goes to jail for 18 months for perjury. Deaths of Cardinal Basil Hume (76), hovercraft inventor Christopher Cockerell (88), Official Monster Raving Loony Party founder David Sutch (58), actors DeForest Kelley (Dr McCoy in *Star Trek*, 79) and Buster Merryfield (Uncle Albert in *Only Fools and Horses*, 78).

50 years ago – June 1974: Jim and Rosie Godman-Dorington hold a cheese and wine tasting at Haylands for Petworth Cancer Research Fund – raising more than £1,500 (equivalent to £16,000 today). A strawberry tea held at Brook Cottage by Professor Marian Bowley in support of the Liberal Party is attended by 80 and makes £25. Prince Charles plays polo at Cowdray Park, but there is disappointment that his latest girlfriend, American Laura Jo Watkins, does not accompany him. Celeb Katie Boyle opens the fête at Midhurst Cottage Hospital. A one-way traffic scheme is trialled in Midhurst and planned to run for up to six months. The British Lions defeat the Springboks 12-3 and 28-9 in the first and second Test matches in South Africa. In the last episode of *Planet of the Spiders*, the third Dr Who Jon Pertwee morphs into the fourth, Tom Baker.

From the belfry: Come and see us ding dong!

Graffham's bellringers continue their series of occasional reports with a review of the year, prompted by a social AGM which included some soul-searching and new resolutions!

Graffham's Tower Captain Howard Pescott led a very sociable AGM at the rectory at the end of March. The 13-strong band of village ringers spent an enjoyable evening reflecting on the past year and resolving to progress their hobby – one where the learning process never stops. One of them has been known to describe it as “taking longer than fighter pilot training” – but this isn't really true!

Howard thanked the various people who keep the bells ringing – Phillip Turner, the Rev Vivien, Alison Davidson, John Pescott, Karin Skanberg and the five trainers from nearby towers who help us progress: Vicky Chase, Kevin Quigley, Colin and Susan Spencer and Nigel Boorman.

Their congratulations were passed on to the Graffham 'band' and they commented favourably on everyone's flexibility in particular (in terms of bell choices!) The



T: 01483 208408
E: office@ghinn.net
www.ghinn.net



For over 50 years Ghinn & Co. have been helping home owners improve and extend their properties throughout Surrey and West Sussex.

Call now for a FREE, professional quotation from the experts.



Paula's Cleaning Services

Call for Quotation! 07563 722849

House Cleaning, Office Cleaning,
Deep Cleans and everything in
between!

Quiz answers (from page 50) 1 Lord Young. 2 Laurence. 3 A Buddhist monastery. 4 Stonehenge. 5 Agatha Christie's. 6 Donald Trump's, Ivanka. 7 *A Question of Sport*. 8 Sue Barker. 9 JPR Williams. 10 Gavin & Stacey.



group was then asked to choose a personal goal for the coming year. A selection of responses included:

- Regain confidence in Bob Minor, Grandsire and Bob Doubles.
- Ring down proficiently.
- Master rope sight.
- Move about in methods.
- Ring Plain Hunt from any bell.
- Devise a 'get younger' pill!

If this all sounds like gobbledegook then rest assured, mastering the lingo is all part of the fascination of learning bell-ringing! The aim for the entire group was determined to be a quarter peal within five years.

Since the meeting the crew have rung the bells at Bell Sunday on 12 May and will be heard opening the Graffham Festival on Friday 14 June as well on the following Monday (17 June), both at 6pm. There are seven weddings this summer when the band will be aiming to perform at their very best. (Normal practice sessions do involve a fair amount of laughter.)

Graffham's bellringers practice every Tuesday evening at St Giles from 7.30 to 9pm. There is also a session on the second Saturday of each month from 10am to 12 noon. If you might be interested, come along and see what it's all about.



Who's doing what at St Giles in June

Here's the rota for 10.30am services this month. If you cannot do your slot, please arrange a swap and advise Diane Bellis at zudr.bellis@gmail.com and the Rev Vivien at reverendvivien@gmail.com

	Welcomers	Reader	Reading	Refreshments
2	Yvonne Churchward	Clive Rowntree	1 Samuel 3 v1-10	To be confirmed
9	Diane Bellis	Baptism family	Psalm 138	To be confirmed
16	Barbara Edge	Ann Brown	Psalm 92	Dinah Lamming
23	Cindy Bradley	Beanie Bradley	Psalm 107 v23-32	Beanie Bradley
30	Bridget and Stuart Lewis	Stuart Lewis	Lamentations 3 v23-33	To be confirmed

Flowers	
2	Ginny Barrett
9	Sally Blunt
16 and 23	Festival

Cleaning	
Ginny Barrett and Diane Bellis	

Other denominations locally

Methodist: Midhurst. *Minister:* David Muskett *Tel:* 01730 233436. *email:* superintendent@esanddcircuit.org.uk. *Web:* midhurstmethodist.com *Worship:* Sundays 10.00am, and Café Church 1st and 3rd Wednesdays 10.30am.

Roman Catholic: The Catholic Churches of Saints Anthony and George, Duncton, The Divine Motherhood and St Francis of Assisi, Midhurst, and The Sacred Heart, Petworth. *email:* petworth.abdiocese.org.uk. *Tel:* 01798 342169. *Web:* www.petworthcatholic.org

Mass					
Sun	8am	Duncton	Thu	9.30am	Petworth
	9.30am	Midhurst		12noon	Midhurst Convent
	11am	Petworth	Fri	6.30pm	Petworth
Tue	10.30am	Petworth	Sat	9.30am	Midhurst
Wed	9.30am	Midhurst		5.30pm	Petworth

Society of Friends (Quakers): St Anne's Community Centre, St Anne's Hill, Midhurst, GU29 9NN. *Web:* sussexwestquakers.org.uk *Meetings:* 2nd and 4th Sundays 10.30am.

United Reformed Church: Petworth. *Minister:* Revd Anne Lewitt *Tel:* 01798 872535. *Web:* petworthurc.co.uk *Worship:* Sundays 10.30am.

RINGING and SINGING

To join Graffham's bellringers or occasional choir, contact Revd Vivien on 01798 867199 or at hello@stgilesgraffham.org

What's on at our village church and chapel

- All residents of and visitors to Graffham are welcome to all services.
- St Giles Church is at the far south end of Graffham Street, near the Downs.
- All Saints' Chapel is opposite Graffham Village Shop.
- Both St Giles Church and All Saints' Chapel are open daily.
- See stgilesgraffham.org or Facebook's @stgilesgraffham for any changes.
- Teddy Time is at the Rec Pavilion every Wednesday 10.15 to 11.30am.

June				
1	Sat	9.30am	Come and Sing! Hymn practice for all	St Giles Church
		3.15-4pm	Visiting Ringers at church. Please do not disturb though enjoy listening.	St Giles Church
2	Sun	10.30am	Parish Eucharist Trinity 1	St Giles Church
4	Tue	9.30am	Morning Prayer then Pilgrims at 10am	All Saints Chapel
8	Sat	10am-12noon	Bellringing practice	St Giles Church
9	Sun	10.30am	Parish Eucharist Trinity 2 with Baptism of Seren Turner	St Giles Church
		6pm	BCP Evensong Trinity 2	All Saints Chapel
11	Tue		No Morning Prayer or Pilgrims	
14	Fri	3.30pm	Wedding Rehearsal	St Giles Church
15	Sat	3.30pm	Wedding of Harriet and Valentin	St Giles Church
16	Sun	9am	BCP Holy Communion Trinity 3	St Giles Church
		10.30am	Third Sunday Songs of Praise for Graffham Festival 2024	St Giles Church
18	Tue	9.30am	Morning Prayer then Pilgrims at 10am	All Saints Chapel
18-20	Tue-Thu	12noon - 2pm	Ploughmans' lunches in aid of St Giles Church	The Old Rectory, by St Giles Church
21	Fri	11.30am	Thanksgiving Service for Pauline Dover	St Giles Church
		3.30pm	Wedding rehearsal	St Giles Church
22	Sat	2pm	Wedding of Annie and Gaius	St Giles Church
23	Sun	10.30am	Graffham Festival 2024 Thanksgiving Eucharist. Trinity 4	St Giles Church
25	Tue		No Morning Prayer or Pilgrims	
30	Sun	10.30am	Parish Eucharist Trinity 5	St Giles Church
July				
1	Mon	12noon	Burial of Ashes of Michael Stroud RIP	St Giles Church
2	Tue	9.30am	Morning Prayer then Pilgrims at 10am	All Saints Chapel

What's on in and around the village

For all St Giles and All Saints events, see page 61. For all sports dates, see page 54.

June

1	Sat	9am-2pm	Midhurst Farmers Market	Midhurst
		12 noon	Petworth Festival: Julian Lloyd Webber	St Mary's Petworth
		7.30pm	Petworth Festival: Harp and violin	
3	Mon		WSCC schools return from half-term	
4	Tue	9-11 am	Great Feet foot health professional ¹	Empire Hall
		2pm	Arts Society West Sussex on Catherine the Great: World's Greatest Collector	Fittleworth Village Hall
5	Wed	9.30am-3.30pm	Festival of Flowers	Chichester Cathedral
6	Thu	10am	UKHarvest surplus food market (see page 42)	Sylvia Beaufoy Centre
7	Fri		The last Garden Show (till 9 June)	Stansted Park
7	Fri		Goodwood Friday Night races with music (also on 14 and 21 June)	Goodwood
8	Sat	8pm	Drag night (see page 42)	Three Moles
9	Sun		Family race day	Goodwood
9	Sun	7pm	Folk music night	Three Moles
10	Mon	10.30am	Graffham Garden Group outing to High Beeches (see page 43)	Handcross
13	Thu	2.30pm	Thursday club strawberry tea	Bowls Club
14	Fri	7pm	Shakespeare on bikes	Petworth House

14-23 June:

GRAFFHAM FESTIVAL 2024

Concerts, flowers, artist studio trail, open gardens talks, films, revue, barbeque, steel band, singing, food, wine, beer, children's activities, cabaret and much more...

For full details see the programme in our pull-out centre section.

15	Sat	3.30pm	Wedding of Harriet and Valentin	St Giles Church
			Dr Busker and the Dorset Rats (page 48)	Three Moles
16	Sun		Sussex Day	
21	Fri	4-8pm	Family Fridays (see page 5)	Rec
22	Sat	9am-1pm	Petworth Farmers Market	Petworth
		2pm	Wedding of Annie and Gaius	St Giles Church

Continued on next page

23	Sun	10am-5pm	Free entrance to house and gardens	Petworth House
26	Wed	12.30pm	Lunch Club ²	Empire Hall
29	Sat	10-11am	Community garden work party	War Memorial
		All day	Armed Forces Day celebrations (page 51)	Three moles

¹**Great Feet foot health professional:** Available to Graffham Health Support Association members only.

²**Lunch Club:** Graffham Empire Hall Lunch Club meets on the fourth Wednesday of the month at 12.30pm for 12.45pm for a home cooked two-course meal and coffee, at £8 a head. Please book via Sarah on 01798 867567.

Regular weekly activities (for notes, how to book, etc, see below)			
Mondays	9-10am	Fitflows Fitness ²	Empire Hall
	Daytime-evening	Osteopath ³	Empire Hall
Tuesdays	8.30am-12noon	Post Office	Empire Hall
	9am	Strength and mobility with Abi Martin ¹	Westerlands
	Daytime-evening	Osteopath ³	Empire Hall
Wednesdays	9-10am	Yoga ⁴	Empire Hall
	10.15-11.30am	Teddy Time toddler group ⁵	Pavilion
	11.15am-12noon	Pilates ⁶	Empire Hall
	1.45-2.45pm	Rusty Racquets adults tennis coaching ⁷	Rec
	6pm	Boot camp with Nina ¹	Westerlands
	7-8.30pm	Badminton ⁸	Empire Hall
	Daytime-evening	Osteopath ³	Empire Hall
Thursdays	Daytime-evening	Osteopath ³	Empire Hall
	9am	Boot camp with Abi Martin	Westerlands
	10.45-11.45am	Ease Into Exercise ⁹	Empire Hall
	6-7.15pm	Yoga ⁴	Empire Hall
Fridays	9-10.15am	Yoga ⁴	Empire Hall
	9am-3pm	Physiotherapy clinic ¹⁰	Empire Hall
	evening	Tennis Club social evening	Rec
Saturdays	8am	Hard core exercise with Nina ¹	Westerlands
	10am	In motion with Gareth ¹⁰	Westerlands
Sundays	5pm	Pickleball ¹¹	Empire Hall
	5pm	Casual football ¹²	Rec

Empire Hall: For booking and contact details, see Directory, inside back cover.

¹**For all Westerlands events:** Book online at www.westerlands.com/experiences/wild-fit

²**Fitflows Fitness:** Contact Susie Bush 07870 219956.

³**Osteopath:** Bookings required. To make an appointment, for daytime or early evening, contact Anna Shawcross on 01798 867523 or see www.annashawcross.co.uk

⁴**Yoga:** Deborah Albon on 07790 867009.

⁵**Teddy Time:** No charge. All welcome. Just come along.

⁶**Pilates:** Contact Nicky Capes on 07990 517858 or 01730 812297.

⁷**Rusty Racquets:** Contact Richard Hopp at richard@hoppecoaching.co.uk, on 07904 069457.

⁸**Badminton:** Contact Louisa Thomas, at louisa9000@hotmail.co.uk. All welcome.

⁹**Ease Into Exercise:** Contact Susie Bush 07870 219956.

¹⁰**Physiotherapy:** Contact Serena Cooper on 07884 445983 or at serenacooper.physiotherapy@outlook.com.

¹¹**Pickleball:** Contact Beanie Bradley on 07500 080417.

¹²**Casual Football:** Contact Lucas Thornley on 07767 721997.

ME CONTRACTING SUSTAINABLE LAND MANAGEMENT

- Land reclamation and repurposing
- Installing farm tracks
- Drainage
- Bulk excavation work and site clearance
- Aggregates
- Creating and restoring lakes and ponds
- Ditch clearance

hello@me-contracting.co.uk
07786 161666



Straight Line Fencing

With 30+ years' experience, we are the leading fencing and groundwork specialists in West Sussex and Surrey.

Quality workmanship assured, whether you need to keep children or horses in, wildlife out or just want security for your home.

01428 685222

s1f@straightlinefencing.co.uk

Norwood Contractors GARDEN MAINTENANCE

Grass and Hedge cutting,
Pruning, weeding,
Planting etc.....

ENQUIRIES:


01798 867 338

Or 07973 370 727



Anna Shawcross
— OSTEOPATHY —

Call Anna 01798 368078

hello@annashawcross.co.uk | 

Caytons Limited

Stuart A Hail
Specialist Oil Fired
Heating Engineer

**Boilers
Agas**

**Servicers
Breakdown
Installation**

Tel 01798 344 213

M 07779 11 33 43

Email: caytonsltd@gmail.com



MOLE CATCHING
"NO MOLE, NO FEE"
WASPS / HORNETS

CONTACT ANGUS ON 07828 134086
WWW.ASCOUNTRYSIDESERVICES.CO.UK

HOOLI.

Design | Marketing | Words | Web


01730 816484

 @hoolidesign

hooli.co.uk | hello@hooli.co.uk

Get in touch with Julia and Rachel

Nº1 West Street, Midhurst

 front.hopefully.desktops

Martin Taylor

*Quality Carpenter, Joiner and
Cabinet Maker*

*Fully fitted and freestanding furniture
a speciality. Cupboards, Wardrobes,
Radiator Covers, Fitted Kitchens.
Design service available.*

Mobile 07704-524252

*Email:- martin@martintaylor design.co.uk
www.martintaylor design.co.uk*

Water Pipe Repair Services

Allan Marsh

07470 440836

Water pipe repairs
Water pipe renewals
Plumbing repairs
Water leak detection
Lead pipe replacement
Drain repairs
Outside taps fitted
Sinks, baths and toilets
Driveway and footpath repairs



ATHENA
BOOKKEEPING SERVICES

BOOKKEEPING SERVICES

for small business and sole traders

VAT RETURNS CIS RETURNS

SELF-ASSESSMENT

GENERAL BOOKKEEPING

Jennifer Sear MICB

Heyshott, Midhurst

T: 07834 765761

E: athenabookkeeping@aol.com



need help with your pc? Clive Way BA ^{hons} Computing

The friendly professional service for your home pc, laptop and other device nightmares.

I am now based in Wales.
But *fear not* –
I can still help you with
many problems by
remotely accessing your pc,
mac, phone, ipad or other
electronica.



tel: 0791 7766254

email: cliveway@yahoo.com

HELEN'S AIRPORT CARS

"With US it can often cost less than rail or airport parking"



Saloons
MPVs
Estates
4 - 8 seaters

Reliable
Affordable &
Comfortable
Pre-booked
24hr

01243 820820

Book Online Now www.airporttaxi.co.uk

24 Sudley Road, Bognor Regis. PO21 1ER



Timberscapes

Born out of a family of gardeners
and skilled craftsman

- ⊙ All hard landscaping, garden clearance
- ⊙ Site/garden clearance
- ⊙ Ground works & site levelling
- ⊙ Garden walls & raised planting beds
- ⊙ Paving, decking, wooden structures
- ⊙ Fencing and edging

07913 118780

greg@timberscapes.co.uk

Jane Bellinger

Professional Cordon Bleu Chef

Dinner Parties Luncheons

Weddings Canapes

Picnics Buffets

Afternoon Teas Desserts

info@janebellinger.com

www.janebellinger.com

St. Anne's Cottage, The Street,

Bury, RH20 1PA

Tel 01798 839433

Success

No greater gift



Maths tutoring

11+, 13+, Scholarship, GCSE, A Level, IB, Pre-U

www.escry.com

simon.mitchell@escry.com 07850 125 519

CARPET & RUG DRY CLEANING
UPHOLSTERY & CURTAIN CLEANING
STAIN PROTECTION

TEL: 01730 814 965

www.magnadrysouthern.co.uk



MAGNA DRY SOUTHERN

Free Estimates ~ Fully Insured

Matt Wheatley

Local electrician

Part P approved contractor

Fully insured

For prompt and friendly
service, please call

07976 465974

or email

mattwheatley1971@btinternet.com



SERENA COOPER

PHYSIOTHERAPY

SPECIALIST MSK PHYSIOTHERAPIST
MSC, HCPC, MCSP

Friday Physiotherapy Clinic
Grafham

Low back pain/ sciatica

Neck pain

Joint pain

Muscular aches and strains

Sporting/ligament injuries

Chronic pain

Home visits available

For more information please get in touch on:

0788-4445983

serenacooper.physiotherapy@outlook.com



Graffham Based Taxi Service

PRE-BOOKED LONG DISTANCE JOURNEYS



• PLEASE CALL, TEXT OR EMAIL FOR A QUOTE.
• 24 HOUR SERVICE AVAILABLE BY PRIOR ARRANGEMENT.

07467 521 760

pescadorashire.co.uk
pescadorasprivatehire@gmail.com



Prompt and Friendly
Telephone Fran or Dean on

07768 986 338

Based in Lickfold
Est. 1990

prismwindowcleaningltd.com



Roger Poat & Partners Funeral Directors & Monumental Masonry Consultants

Duck Lane, Midhurst, West Sussex GU29 9DE

Telephone 01730 812094

(24 Hours)

- Pre-need Funeral Plans
- Private Chapel

Email: info@rogerpoat.co.uk

Michael Miller & Partners Ltd

SMART CARS

PRIVATE HIRE / TAXI SERVICE

Executive Saloon and Chauffeuring Service

Professional, Personal, Reliable

Same Day Courier Parcel Service

For quotes and bookings call Dominic

07823 559099

email: smartcars@tiscali.co.uk

Card payments accepted

Established Midhurst 2006



**THE MARTIN SEWELL
BUILDING COMPANY**

An award-winning Chartered Building Company that has worked in the Sussex area since 1985, gaining a well-deserved reputation for professionalism, reliability, high quality craftsmanship & project management skills.

Experienced in all types of building projects, from large commercial to the sensitive renovation of listed buildings, bespoke new-builds or extensions & refurbishments.

Telephone 01243 542056
Email martin@msbc.co.uk
www.msbc.co.uk



SUSSEX LAND WORKS

Ground Work, Driveways, Patios, Paving,
Drainage, Concreting, Tarmacing,
Water Pipe Repairs and Installation
and more

info@sussexlandworks.co.uk

01730 814751

07950 035997

www.sussexlandworks.co.uk

Directory: Useful local contact info

DOCTORS	Petworth Surgery	01798 342248
	Midhurst Riverbank Medical Centre	01730 812121
	Haslemere Minor Injuries Unit	01483 782334
DEFIBRILLATOR	On wall outside Empire Hall	Code is C240Z
FLOOD ALERT for Lods Bridge	To check river level	bit.ly/lodsbridge
POLICE	In emergency	999
	Non-emergency	101@sussex.pnn.police.uk 101
BURST WATER MAINS	Southern Water	0800 820 999
POWER CUTS	Scottish & Southern Electric	0800 0727 282
99 FLEX BUS	Linking Graffham with Chichester, Petworth etc	01243 858854 bit.ly/99flexbus
All Saints Chapel Trust	Chairman Clive Rowntree	01798 867536
Badminton	Louisa Thomas	louisa9000@hotmail.co.uk
Bees / Swarms		
	Wisboro' Green B'keepers	Tom Moore 07984 606214/01798 343470
	Local beekeeper	Murray West evenings 01798 867048
Chichester District Council		01243 534734
	District Councillor	John Cross jcross@chichester.gov.uk 07592 307027
	Dog Warden	Office hours 01243 534734 Emergency 01243 785339
Citizens Advice Bureau		03448 487969
East Lavington Parish Council	Chairman Charles Britton	charles.britton@eastlavington-pc.uk
	Clerk Amy Harte	07889 979820 eastlavingtonpc@gmail.com
Empire Hall		empirehall.org.uk empirehall@gmail.com
	Chairman and Bookings	Sally Blunt bookings.empirehall@gmail.com
	Treasurer	Carole Sargent 01798 344790
	Maintenance	Gillian Charlesworth empirehall@gmail.com
Empire Lunch Club		Sarah Lydiard-Wilson 01798 867567
Foodbank		info@chichester.foodbank.org.uk 01243 773687
Foresters Arms		forestersarms-pub.co.uk 01798 867386
Graffham Archive	Robin Brind	graffhamarchive@outlook.com 01798 867619
Graffham Bellringers	Tower Captain	Howard Pescott 01798 867029
Graffham Bowls Club	Chairman	Sheila Allen 01798 342869
	Secretary	Liz Pegram 01798 867770
Graffham Cricket Club		Bill Barrett 01798 867113
Graffham Down Trust	Chairman	Jim Kirke 01798 867026
Graffham Garden Group		Carole Kirke 01798 867026
Graff'm Health Support Assc	Chairman	Sarah Lydiard-Wilson 01798 867567
	Membership	Tracy Rowe 07881 698993
	Transport	07391 802541
	Prescription collection	Ann Rowney ann.rowney@icloud.com
	Loan of equipment	Karin Skanberg 07920 091014

Graffham Lunch Club		Sarah Lydiard-Wilson	01798 867567
Graffham Nursery		School Office	01798 867324
Graffham Parish Council	Chairman	Roger Coakes	roger.coakes@grafttham-pc.uk
	Clerk	Caroline Davison	clerk@grafttham-pc.uk
Graffham Parish News	Editorial and circulation:		editor.graftthamparishnews@gmail.com
	Advertising:		ads.graftthamparishnews@gmail.com
	See also bottom of inside front cover		
Graffham with Woolavington Parochial Church Council		stgilesgrafttham.org	
	Priest-in-Charge	Rev Vivien Turner	01798 867199
		hallo@stgilesgrafttham.org	
	Churchwardens	Ginny Barrett	01798 867113
		Cindy Bradley	07787 516522
	Acting Treasurer	Ginny Barrett	graftthampctreasurer@gmail.com
Graffham Rec Committee	Chairman	John Bracey	01798 867760
	Treasurer	Bernard Bayly	01798 867042
	Bookings Sec	Sonya Gillespie	graftthamrecpavilion@gmail.com
Graffham Tennis Club	Chairman	Simon Longman	01798 867317
	Membership	Richard Gyles	01798 867484
	Coaching	Emma Amin	01798 867063
Graffham Village Shop		Jeeva and Vasu	01798 867700
		graftthamvillageshop.co.uk	
Graffham Vill'ge Shop Assoc	Chairman	Steve Dover	07770 499223
	Treasurer	Andy Paterson	andyp1692@gmail.com
	Secretary	Neil McLean	neil.mclean@brookorchard.com
			07971 142252
Katherine Maud Guillod Fund		c/o Graffham PC Clerk	graftthampc@gmx.co.uk
Lavington Estate		info@lavingtonstud.co.uk	01798 867275
Lavington Park Federation		graftthamanddunton.w-sussex.sch.uk	
	Graffham CE Infant School		01798 867324
	Dunton CE Junior School		01798 342402
	Friends of Graffham & Dunton Schools		01798 867324
Long Bostle Downland Soc		Gillian Brandt	01798 867276
MP Arundel & South Downs		Andrew Griffith	andrew.griffith.mp@parliament.uk
Midhurst & Petworth Observer		Nikki Jeffery	01243 534163
National Trust (Lavington Common)			01730 816638
Neighbourhood Watch		Michael Crickmay	01798 867486
Osteopath		Anna Shawcross	01798 867523
Oil Buying Syndicate		Derek Bradnum	derekbradnum@gmail.com
Petworth Food Bank			07501 921617
Pilates at Empire Hall		Nicky Capes	07990 517858
Seaford College			01798 867392
Three Moles		Ollie and Tom	thethreemoles.com 01798 861303
Thursday Club	Secretary	Diane Bellis	01798 867444
West Sussex County Council		General enquiries	01243 777100
	County Councillor	Tom Richardson	07463 785039
White Horse		whitehorsegrafttham.com	01798 867331
Yoga at Empire Hall		Deborah Albon	07790 867009



JACKSON-STOPS

PROPERTY EXPERTS SINCE 1910



“Seems like it was only five minutes ago this place felt as spacious as a palace.”

Downsizing, Upsizing, Extending?

If you are considering the sale of your property or need good advice, we would love to hear from you.

**Please get in touch with our team in
Midhurst to find out more**

01730 812357 midhurst@jackson-stops.co.uk
Market Square, Midhurst, West Sussex, GU29 9NJ